

**LEGEND**

- DRIVEWAY
- EASEMENT
- TOP OF BATTER
- EXISTING SURFACE LEVEL AT TOP OF BATTER
- EXISTING SURFACE LEVEL
- STORMWATER DRAINAGE PIPE
- STORMWATER DRAINAGE PIT
- STORMWATER PROPERTY INLET
- HOUSE DRAIN
- SEWER MAIN
- SEWER RISING MAIN
- SEWER MAINTENANCE HOLE
- SEWER PROPERTY CONNECTION
- GAS MAIN
- WATER MAIN
- RECYCLED WATER MAIN
- SERVICE CONDUITS
  - GAS (G)
  - POTABLE WATER (W)
- PERMANENT SURVEY MARK
- TEMPORARY BENCH MARK
- FILL 150mm - 400mm
- FILL > 400mm

**R** 20.000  
 I 53.165  
 T 10.008  
 A 18.558  
 a 8.950  
 b 2.114  
 c 4.598  
 d 0.536

**L** Curve Setout Details

POINT	EASTING	NORTHING
L1	3038.510	79118.502
L2	3038.410	79113.874
L3	3039.377	79109.347
L4	3041.358	79105.163
L5	3044.249	79101.547

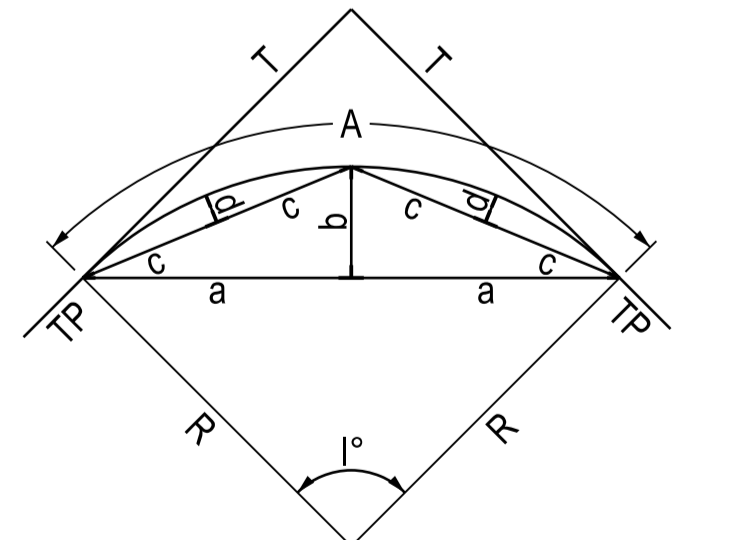
**M** Curve Setout Details

POINT	EASTING	NORTHING
M1	2955.349	79093.892
M2	2955.249	79089.264
M3	2956.216	79084.737
M4	2958.198	79080.553
M5	2961.088	79076.937

**SERVICE OFFSET TABLE**

STREET	SERVICE	WATER	ND WATER	GAS	POWER	TELECOM	SEWER	SEWER RM
HILL FARM DRIVE		3.0 E & N	2.3 E & N	1.85 E & N	2.6 W & S	2.1 W & S	N/A	N/A
CRADLE AVENUE		3.1 W	2.6 W	2.1 W	2.6 E	2.1 E	N/A	N/A
BIMBERRY CIRCUIT (CH 0-125)		3.1 W	2.6 W	2.1 W	3.1 E	2.7 E	N/A	2.1 E
BIMBERRY CIRCUIT (CH 125-315)		2.7 SW	2.2 SW	1.8 SW	3.1 NE	2.7 NE	N/A	2.1 NE
BIMBERRY CIRCUIT (CH 315-420)		3.1 S	2.6 S	2.1 S	2.1 N	1.6 N	N/A	1.2 S
BIMBERRY CIRCUIT (CH 420-465)		0.8 E	0.4 E	1.2 E	2.6 W	2.1 W	0.9 W	N/A
FRENCH STREET		2.7 W	2.2 W	1.8 W	N/A	N/A	N/A	N/A

NOTE: OFFSETS ARE FROM ROAD RESERVE BOUNDARY TO PIPE CENTRELINE

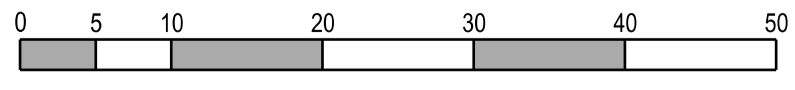


CURVE SETOUT NOTATION

**AS CONSTRUCTED**

Rev	Description	Date	By	App
P5	GENERAL AMENDMENTS	24.02.12	JM	CW
P4	ISSUED TO COUNCIL FOR APPROVAL	15.02.12	JM	CW
P3	GENERAL AMENDMENTS	13.02.12	JM	CW
P2	LOT LEVELS AMENDED	07.02.12	JM	CW
P1	PRELIMINARY ISSUE	03.02.12	JM	CW

Rev	Description	Date	By	App
D	AS CONSTRUCTED	14.11.12	SD	CW
C	LOTS 624 & 619 DIVIDED	21.06.12	JM	CW
B	LOT 644 & 645 DRIVEWAYS RELOCATED	17.04.12	JM	CW
A	ISSUED FOR CONSTRUCTION	10.04.12	JM	CW
P7	LOT 642 DRIVEWAY MOVED	15.03.12	JM	CW
P6	PIT6-17 & OFFSET TABLE UPDATED, SPEED HUMP	08.03.12	JM	CW



Designed Date: L.NICKELS DATE

Drawn: C.KIRKCALDY

Approved Date: L.HADDON APPOT

Sheet: 2

**BW** Beveridge Williams  
 development & environment consultants  
 1 Glenferrie Road  
 Malvern VIC 3144  
 ph: 03 9524 8888  
 www.beveridgewilliams.com.au

Project Name: PASADENA STAGE 6  
 CLYDE DEVELOPMENTS  
 CITY OF CASEY

Drawing Title: DETAIL PLAN  
 1 OF 2

F:\38300\_Civil\STAGE 6\3830-6d.dgn

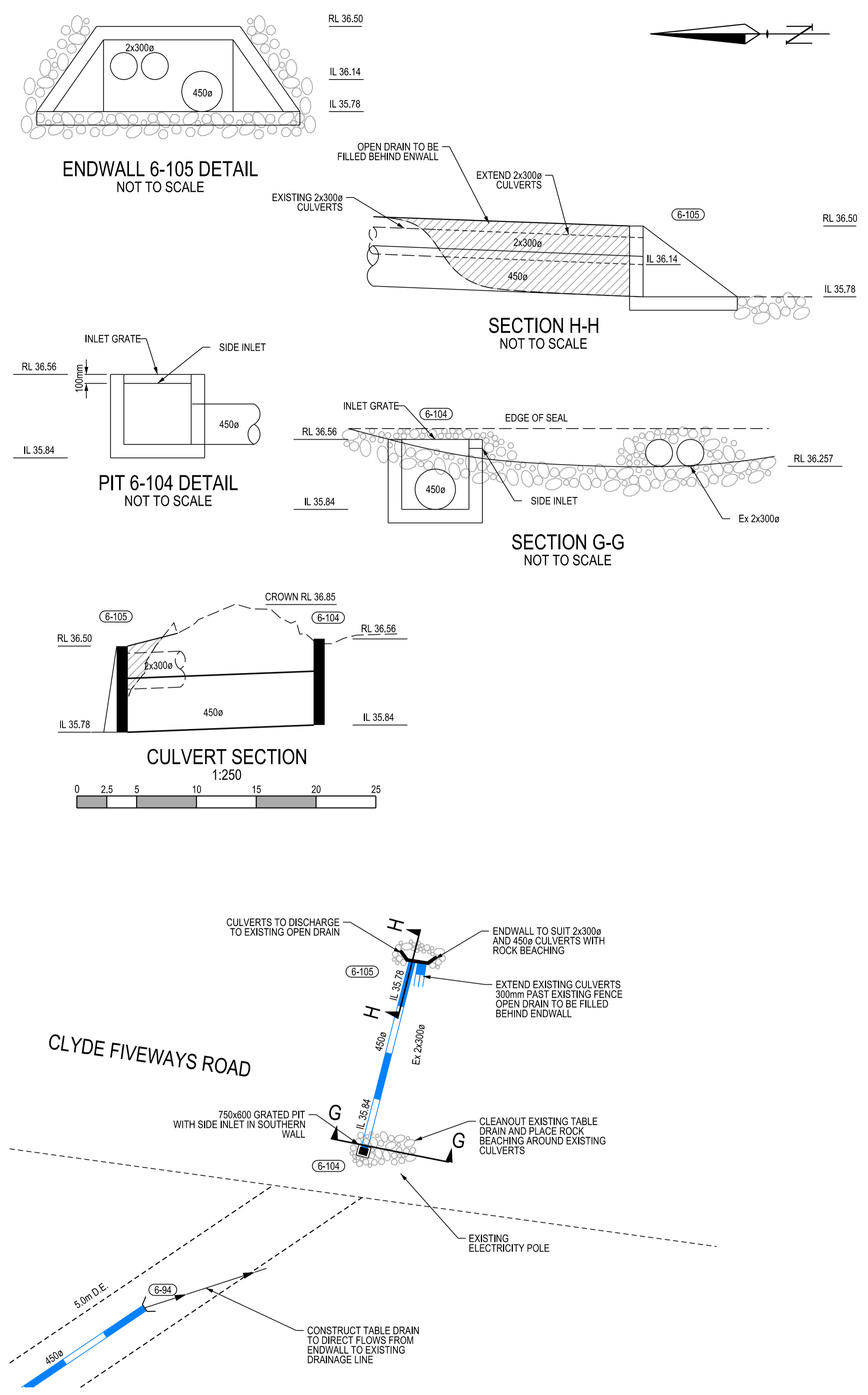
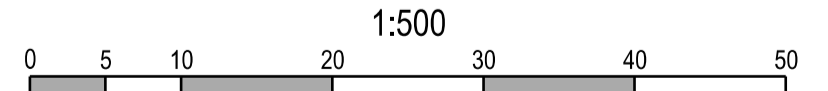
Scale: 1:500 @ A1

Project Ref	Stage No	Drawing No	Rev
3830	06R	002	D

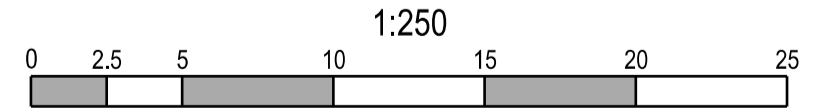


FOR CONTINUATION SEE SHEET 002

DETAIL PLAN



CLYDE FIVEWAYS ROAD CULVERT DETAIL



AS CONSTRUCTED

© COPYRIGHT All rights reserved. Beveridge Williams & Co. Pty Ltd has granted a license to the principal to use this document for its intended purpose. No unauthorized copying is permitted.			
Rev	Description	Date	By App
P5	KERB AMENDED AT FRENCH STREET	20.03.12	JM CW
P4	PIT 6-38 & SERVICE OFFSETS UPDATE	08.03.12	JM CW
P3	GENERAL AMENDMENTS	24.02.12	JM CW
P2	ISSUED TO COUNCIL FOR APPROVAL	15.02.12	JM CW
P1	PRELIMINARY ISSUE	03.02.12	JM CW

Rev	Description	Date	By App
E	AS CONSTRUCTED	14.11.12	SD CW
D	LOTS 624 & 619 DIVIDED	21.06.12	JM CW
C	LOT 659A/659B BOUNDARY MOVED	09.05.12	JM CW
B	LOT 659 DIVIDED, OPTICOMM RESERVE REMOVED	17.04.12	JM CW
A	ISSUED FOR CONSTRUCTION	10.04.12	JM CW
P6	EASEMENT REDUCED IN VICROADS PROPERTY	26.03.12	JM CW

Designed	L.NICKELS
Date	DATE
Drawn	C.KIRKCALDY
Approved	L.HADDON
Date	APPDT
Sheet	3

**BW** Beveridge Williams  
development & environment consultants  
1 Glenferrie Road  
Malvern VIC 3144  
ph: 03 9524 8888  
www.beveridgewilliams.com.au

Project Name	PASADENA STAGE 6 CLYDE DEVELOPMENTS CITY OF CASEY
Drawing Title	DETAIL PLAN 2 OF 2 CLYDE FIVEWAYS ROAD CULVERT
Project Ref	3830
Stage No	06R
Drawing No	003
Rev	E

F:\3830_Civil\STAGE 6\3830-6d.dgn			
Scale			
AS SHOWN @ A1			
Project Ref	Stage No	Drawing No	Rev
3830	06R	003	E