



MGA ZONE 55

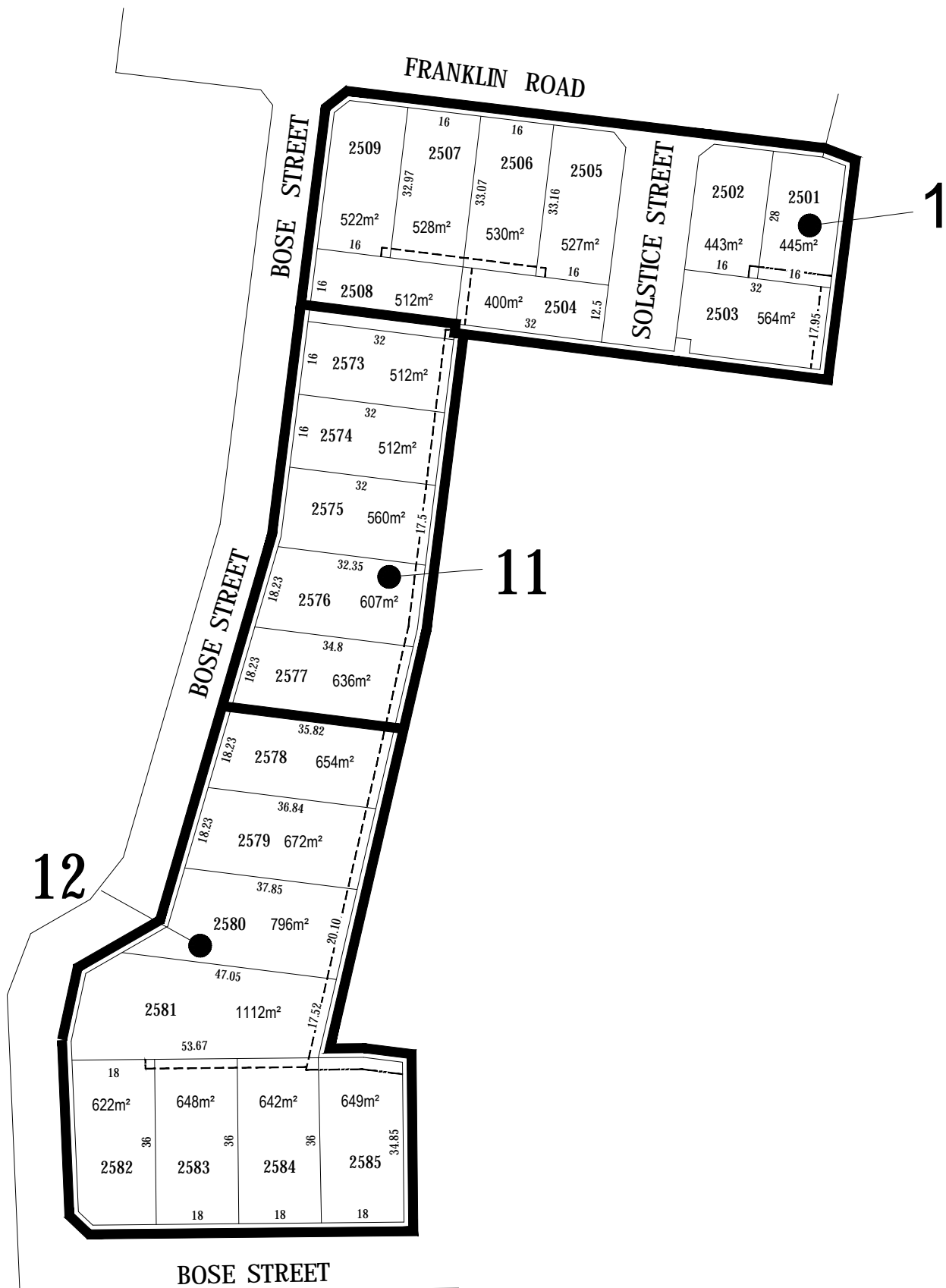
## KEY SHEET 1

REFER TO SHEETS  
1 TO 13  
FOR DETAIL

## ARMSTRONG Mt DUNEED

BUILDING ENVELOPE PLAN  
STAGE 25

February 2018  
Version:F



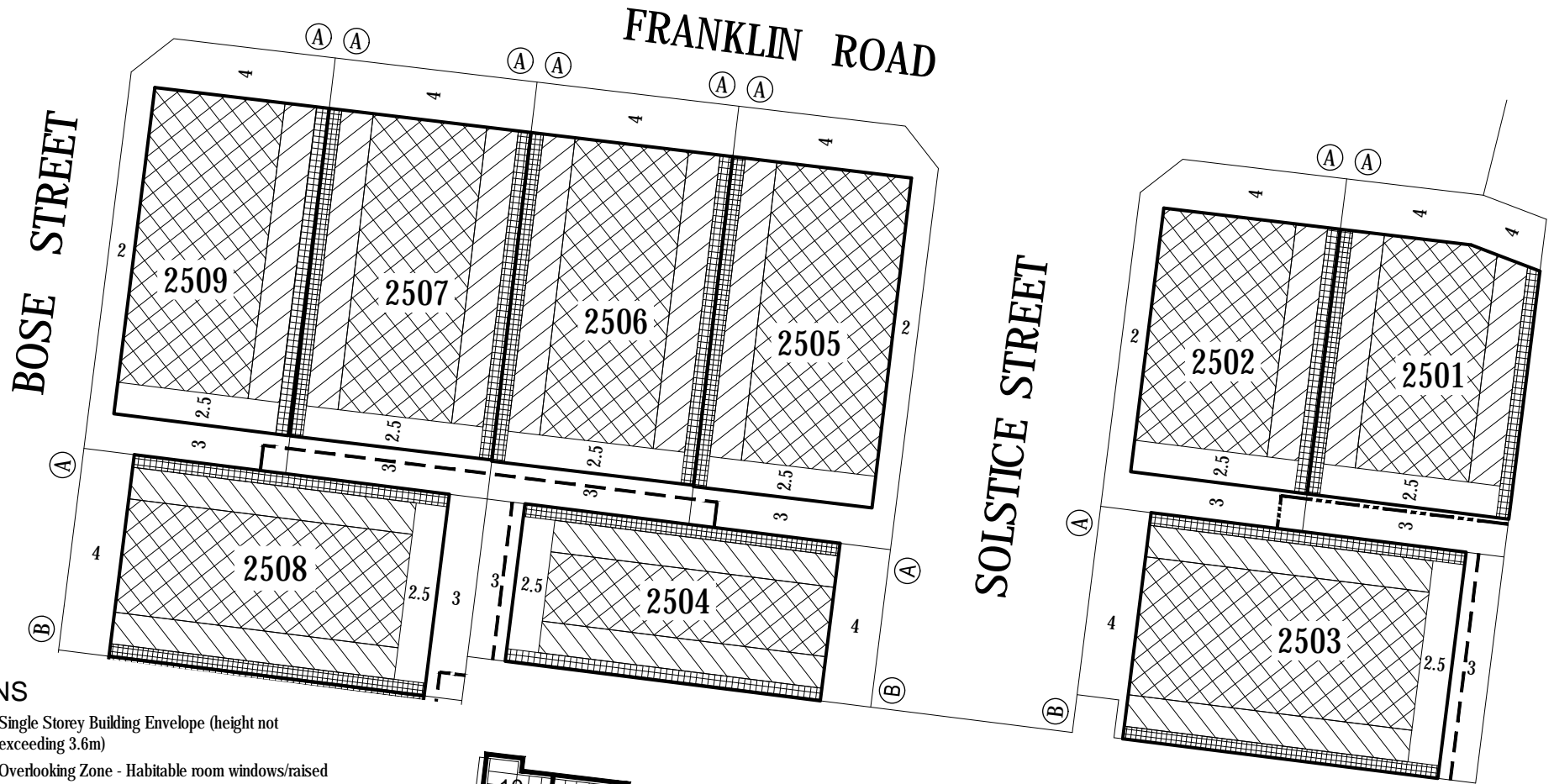
## KEY SHEET 2

REFER TO SHEETS  
1 TO 13  
FOR DETAIL

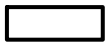
## ARMSTRONG Mt DUNEED

BUILDING ENVELOPE PLAN  
STAGE 25

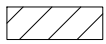
February 2018  
Version:F



# NOTATIONS



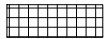
Single Storey Building Envelope (height not exceeding 3.6m)



Overlooking Zone - Habitable room windows/raised open spaces are a source of overlooking



Non Overlooking Zone - Habitable room windows/raised open spaces are not a source of overlooking



Building to Boundary Zone



Building Envelope Boundary Profile Type



2 metre wide easement



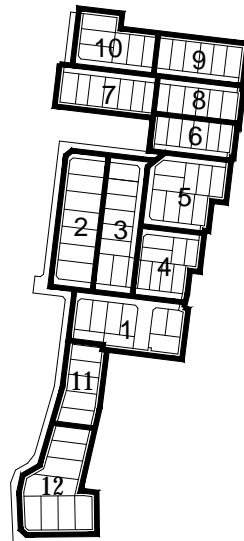
3 metre wide easement

2505

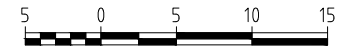
Lot number

3

Setback minimum required (if 0, a building can be constructed on the boundary provided that the building height and length requirements are met)



KEY TO SHEETS



SCALE OF METRES

This Building Envelope Plan is to be read in conjunction with the associated Building Envelope Profiles and Design Guidelines.

The registered proprietor/s of the lot are required to build in accordance with building envelopes shown hereon and in the "Profile Diagrams" in sheet 13.

Detailed design of roads, driveways and footpaths is provided in the relevant Engineering Plans.

Detailed design of landscape works is provided in the relevant Landscape Plans.

All details subject to City of Greater Geelong Council approval.

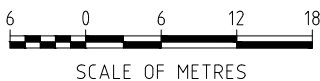
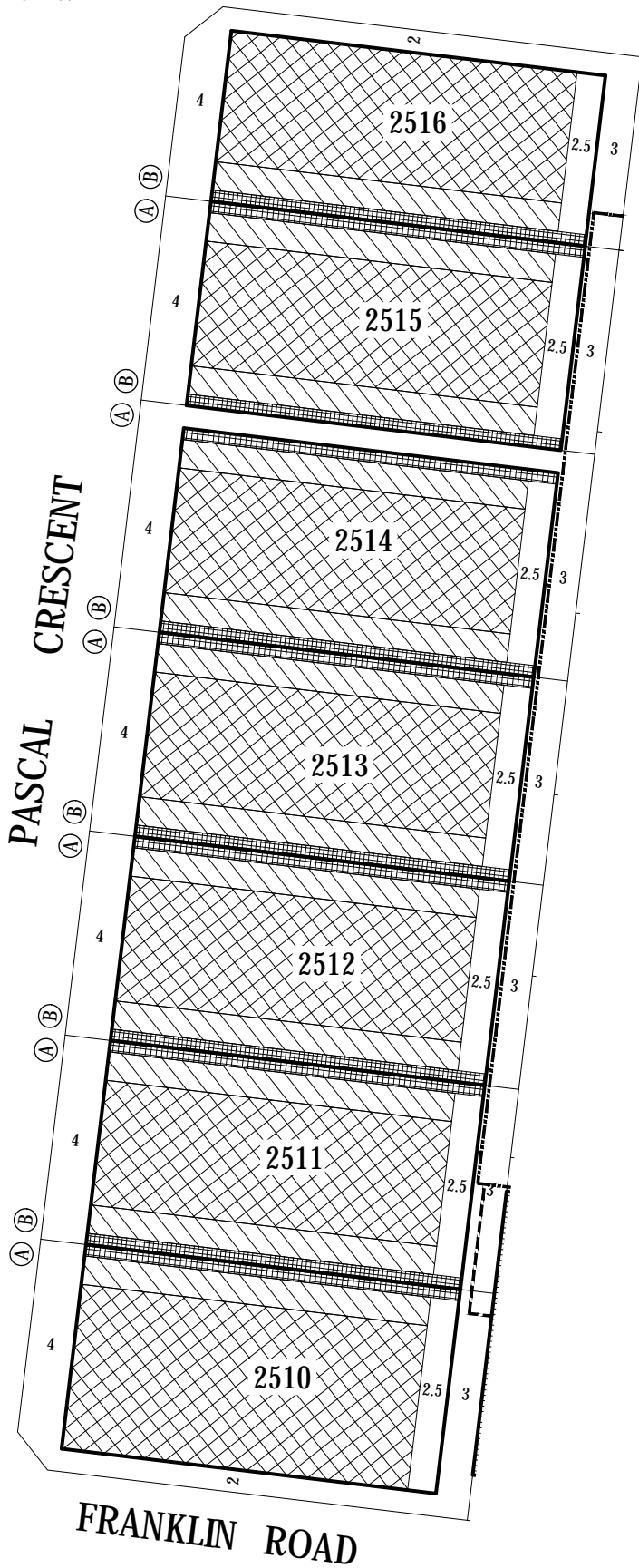
ARMSTRONG Mt DUNEED

BUILDING ENVELOPE PLAN  
STAGE 25

25/1  
stage sheet



PASCAL CRESCENT



## NOTATIONS

	Single Storey Building Envelope (height not exceeding 3.6m)
	Overlooking Zone - Habitable room windows/raised open spaces are a source of overlooking
	Non Overlooking Zone - Habitable room windows/raised open spaces are not a source of overlooking
	Building to Boundary Zone)
	Building Envelope Boundary Profile Type
	2 metre wide easement
	3 metre wide easement
<b>2505</b>	Lot number
<b>3</b>	Setback minimum required (if 0, a building can be constructed on the boundary provided that the building height and length requirements are met)

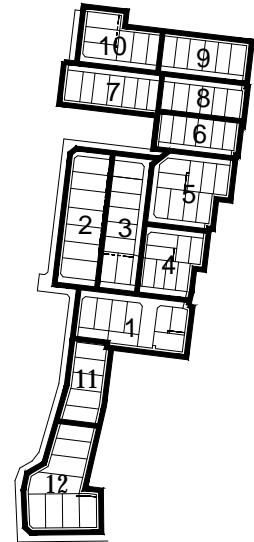
This Building Envelope Plan is to be read in conjunction with the associated Building Envelope Profiles and Design Guidelines.

The registered proprietor/s of the lot are required to build in accordance with building envelopes shown hereon and in the "Profile Diagrams" in sheet 13.

Detailed design of roads, driveways and footpaths is provided in the relevant Engineering Plans.

Detailed design of landscape works is provided in the relevant Landscape Plans.

All details subject to City of Greater Geelong Council approval.



KEY TO SHEETS

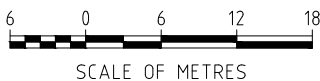
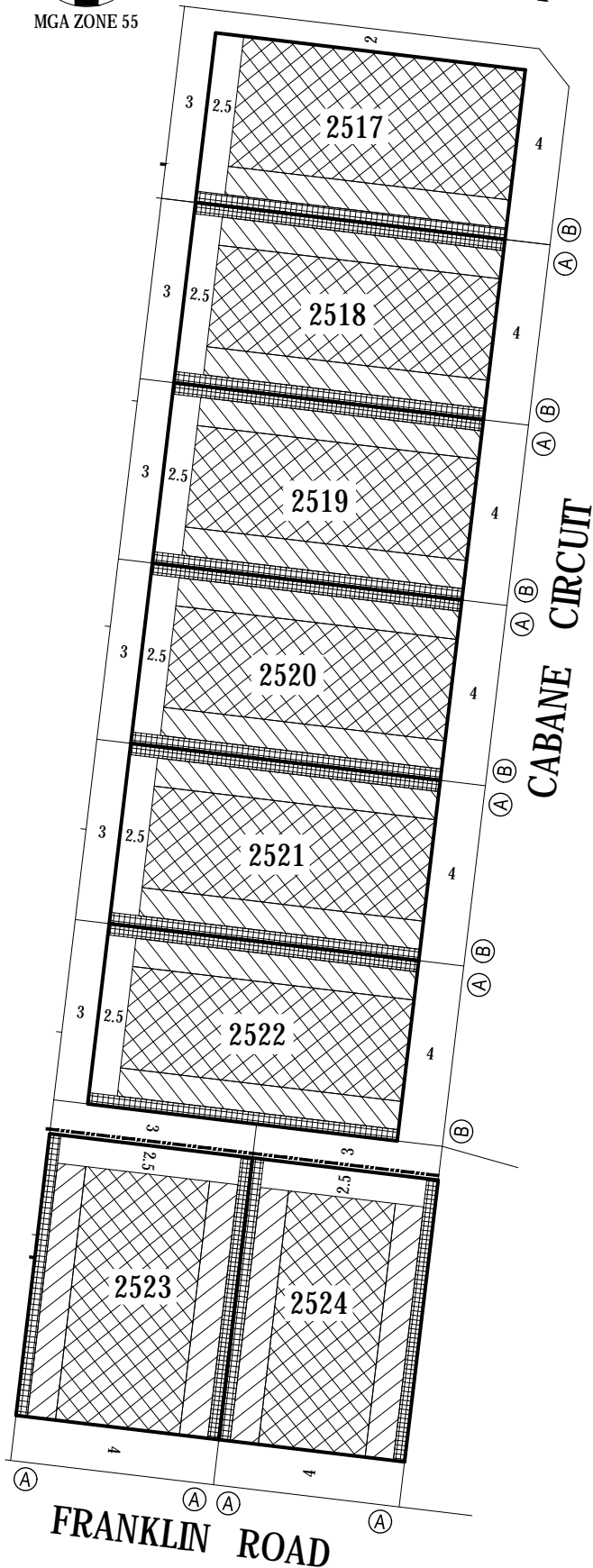
**ARMSTRONG Mt DUNED**

BUILDING ENVELOPE PLAN  
STAGE 25

**25 / 2**  
stage sheet



PASCAL CRESCENT



## NOTATIONS

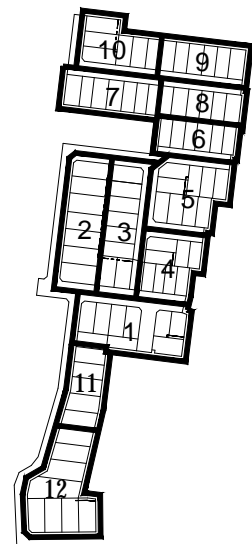
	Single Storey Building Envelope (height not exceeding 3.6m)
	Overlooking Zone - Habitable room windows/raised open spaces are a source of overlooking
	Non Overlooking Zone - Habitable room windows/raised open spaces are not a source of overlooking
	Building to Boundary Zone)
	Building Envelope Boundary Profile Type
	2 metre wide easement
	3 metre wide easement
<b>2505</b>	Lot number
<b>3</b>	Setback minimum required (if 0, a building can be constructed on the boundary provided that the building height and length requirements are met)

This Building Envelope Plan is to be read in conjunction with the associated Building Envelope Profiles and Design Guidelines.  
The registered proprietor/s of the lot are required to build in accordance with building envelopes shown hereon and in the "Profile Diagrams" in sheet 13.

Detailed design of roads, driveways and footpaths is provided in the relevant Engineering Plans.

Detailed design of landscape works is provided in the relevant Landscape Plans.

All details subject to City of Greater Geelong Council approval.



KEY TO SHEETS

**ARMSTRONG Mt DUNED**

BUILDING ENVELOPE PLAN  
STAGE 25

**25 / 3**  
stage sheet





## NOTATIONS

	Single Storey Building Envelope (height not exceeding 3.6m)
	Overlooking Zone - Habitable room windows/raised open spaces are a source of overlooking
	Non Overlooking Zone - Habitable room windows/raised open spaces are not a source of overlooking
	Building to Boundary Zone
	Building Envelope Boundary Profile Type
	2 metre wide easement
	3 metre wide easement
<b>2505</b>	Lot number
<b>3</b>	Setback minimum required (if 0, a building can be constructed on the boundary provided that the building height and length requirements are met)

This Building Envelope Plan is to be read in conjunction with the associated Building Envelope Profiles and Design Guidelines.

The registered proprietor/s of the lot are required to build in accordance with building envelopes shown hereon and in the "Profile Diagrams" in sheet 13.

Detailed design of roads, driveways and footpaths is provided in the relevant Engineering Plans.

Detailed design of landscape works is provided in the relevant Landscape Plans.

All details subject to City of Greater Geelong Council approval.

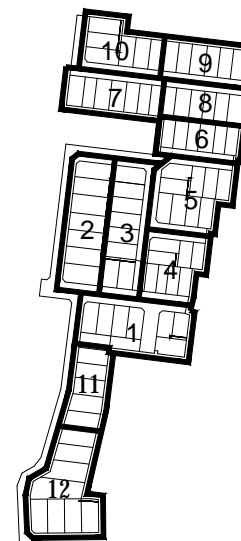
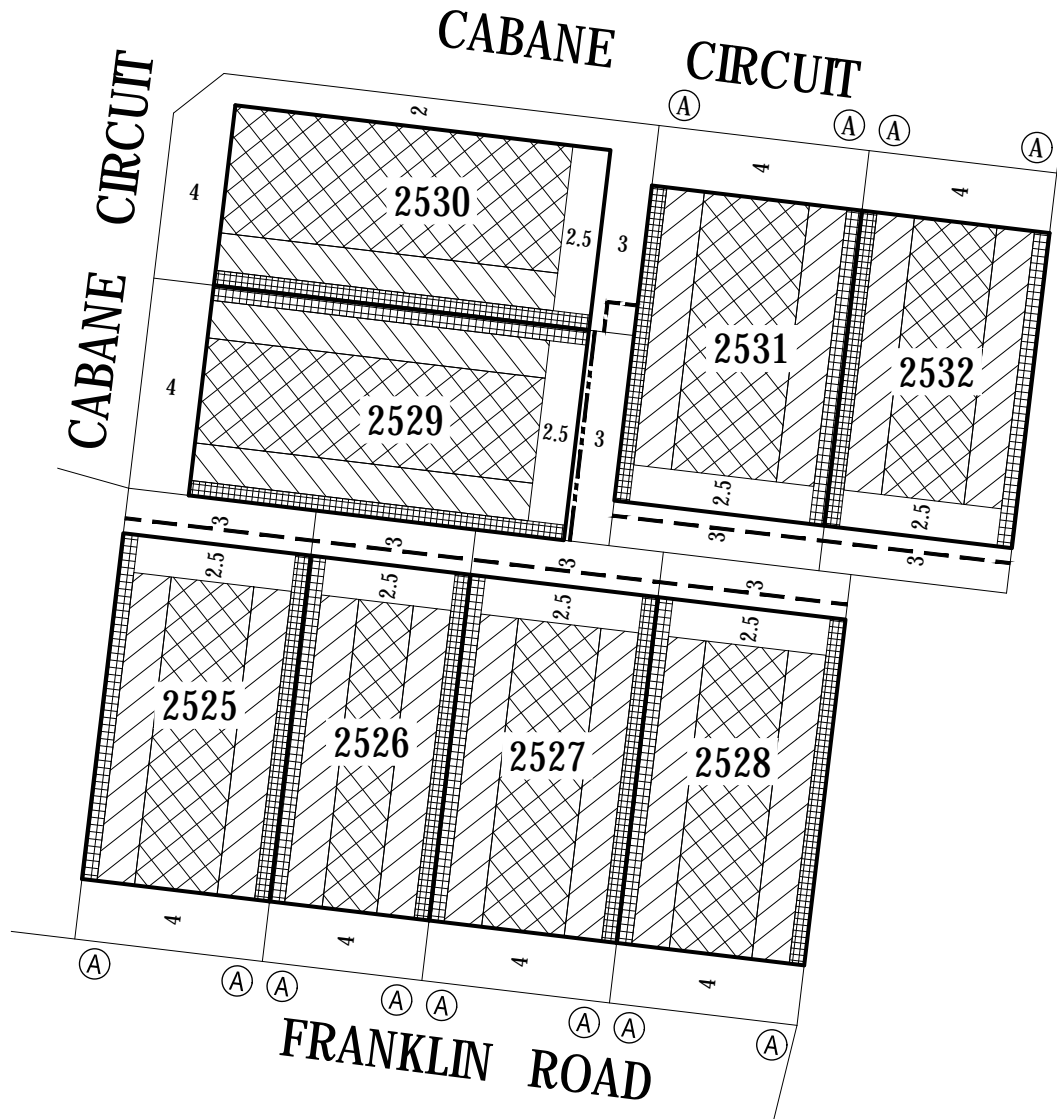
## ARMSTRONG Mt DUNED

BUILDING ENVELOPE PLAN  
STAGE 25

**25/4**  
stage sheet

Sheet 4 of 13

February 2018  
Version:F



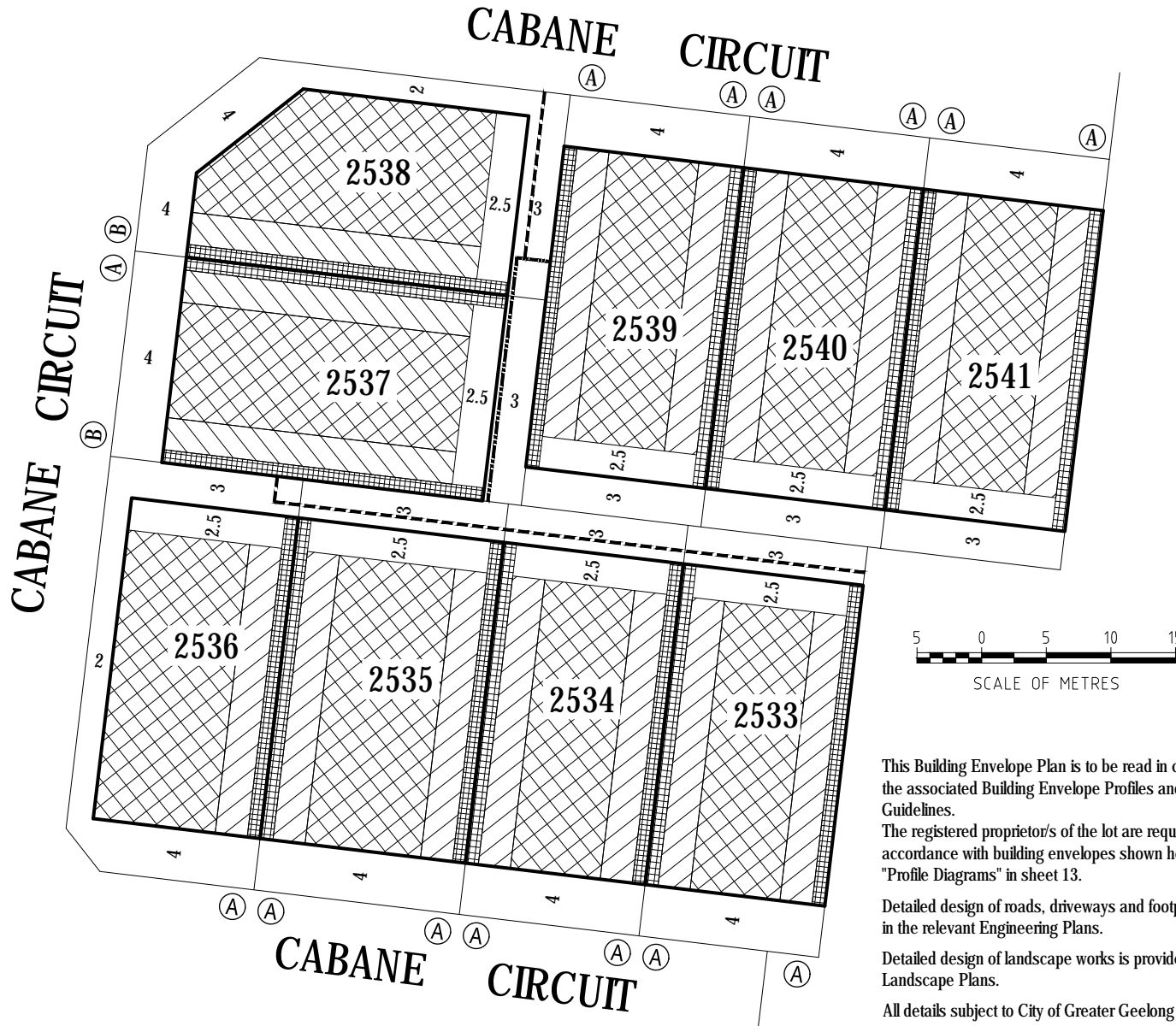
KEY TO SHEETS



## NOTATIONS

	Single Storey Building Envelope (height not exceeding 3.6m)
	Overlooking Zone - Habitable room windows/raised open spaces are a source of overlooking
	Non Overlooking Zone - Habitable room windows/raised open spaces are not a source of overlooking
	Building to Boundary Zone

	Building Envelope Boundary Profile Type
	2 metre wide easement
	3 metre wide easement
2505	Lot number
3	Setback minimum required (if 0, a building can be constructed on the boundary provided that the building height and length requirements are met)



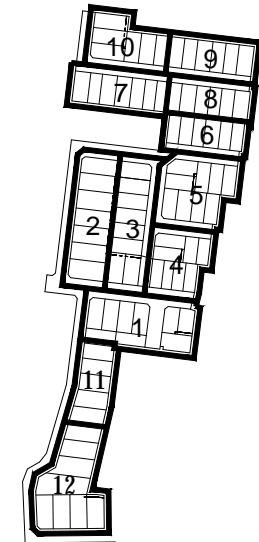
This Building Envelope Plan is to be read in conjunction with the associated Building Envelope Profiles and Design Guidelines.

The registered proprietor/s of the lot are required to build in accordance with building envelopes shown hereon and in the "Profile Diagrams" in sheet 13.

Detailed design of roads, driveways and footpaths is provided in the relevant Engineering Plans.

Detailed design of landscape works is provided in the relevant Landscape Plans.

All details subject to City of Greater Geelong Council approval.

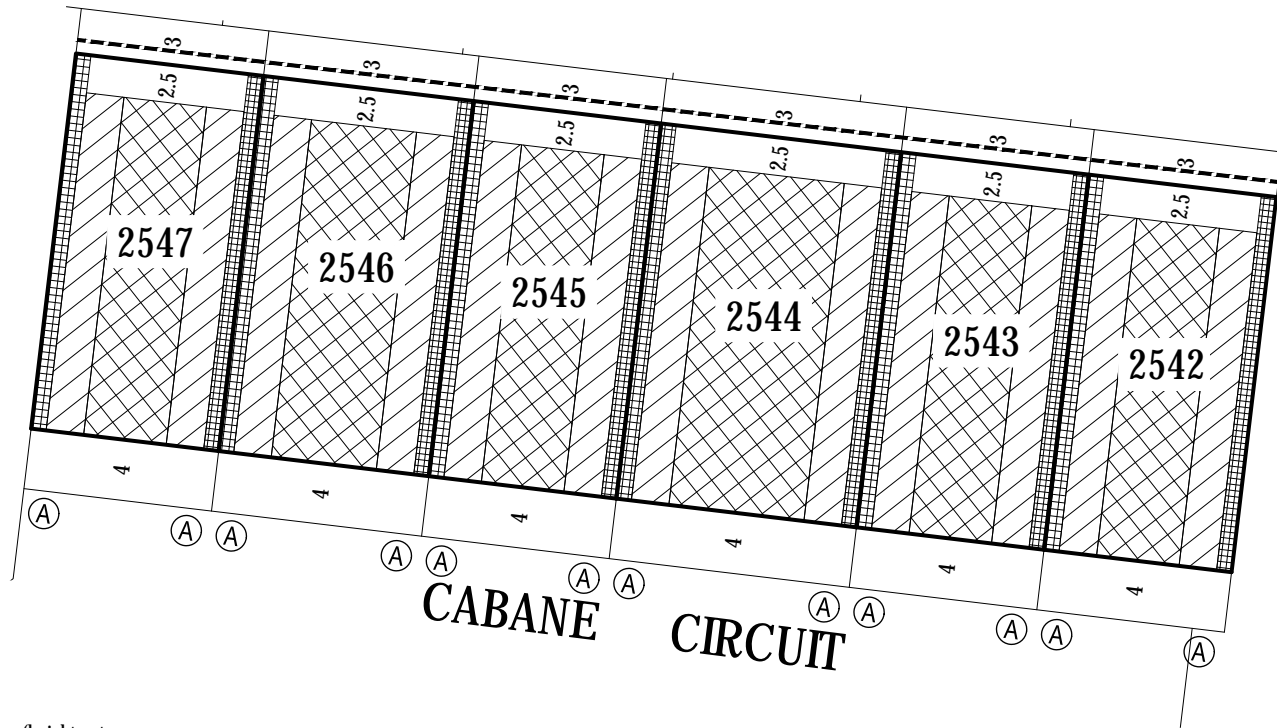


KEY TO SHEETS

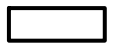
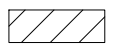


## ARMSTRONG Mt DUNED

BUILDING ENVELOPE PLAN  
STAGE 25


**25/5**  
stage sheet




## NOTATIONS

-  Single Storey Building Envelope (height not exceeding 3.6m)
-  Overlooking Zone - Habitable room windows/raised open spaces are a source of overlooking
-  Non Overlooking Zone - Habitable room windows/raised open spaces are not a source of overlooking
-  Building to Boundary Zone

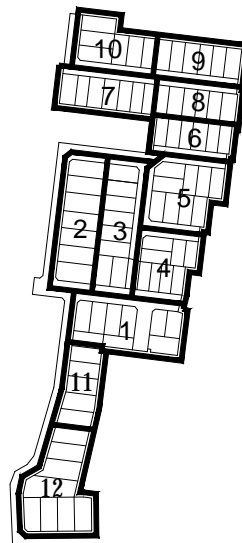
 Building Envelope Boundary Profile Type

 2 metre wide easement

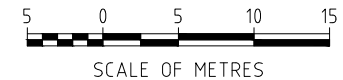
 3 metre wide easement

**2505** Lot number

**3** Setback minimum required (if 0, a building can be constructed on the boundary provided that the building height and length requirements are met)



KEY TO SHEETS



This Building Envelope Plan is to be read in conjunction with the associated Building Envelope Profiles and Design Guidelines.

The registered proprietor/s of the lot are required to build in accordance with building envelopes shown hereon and in the "Profile Diagrams" in sheet 13.

Detailed design of roads, driveways and footpaths is provided in the relevant Engineering Plans.

Detailed design of landscape works is provided in the relevant Landscape Plans.

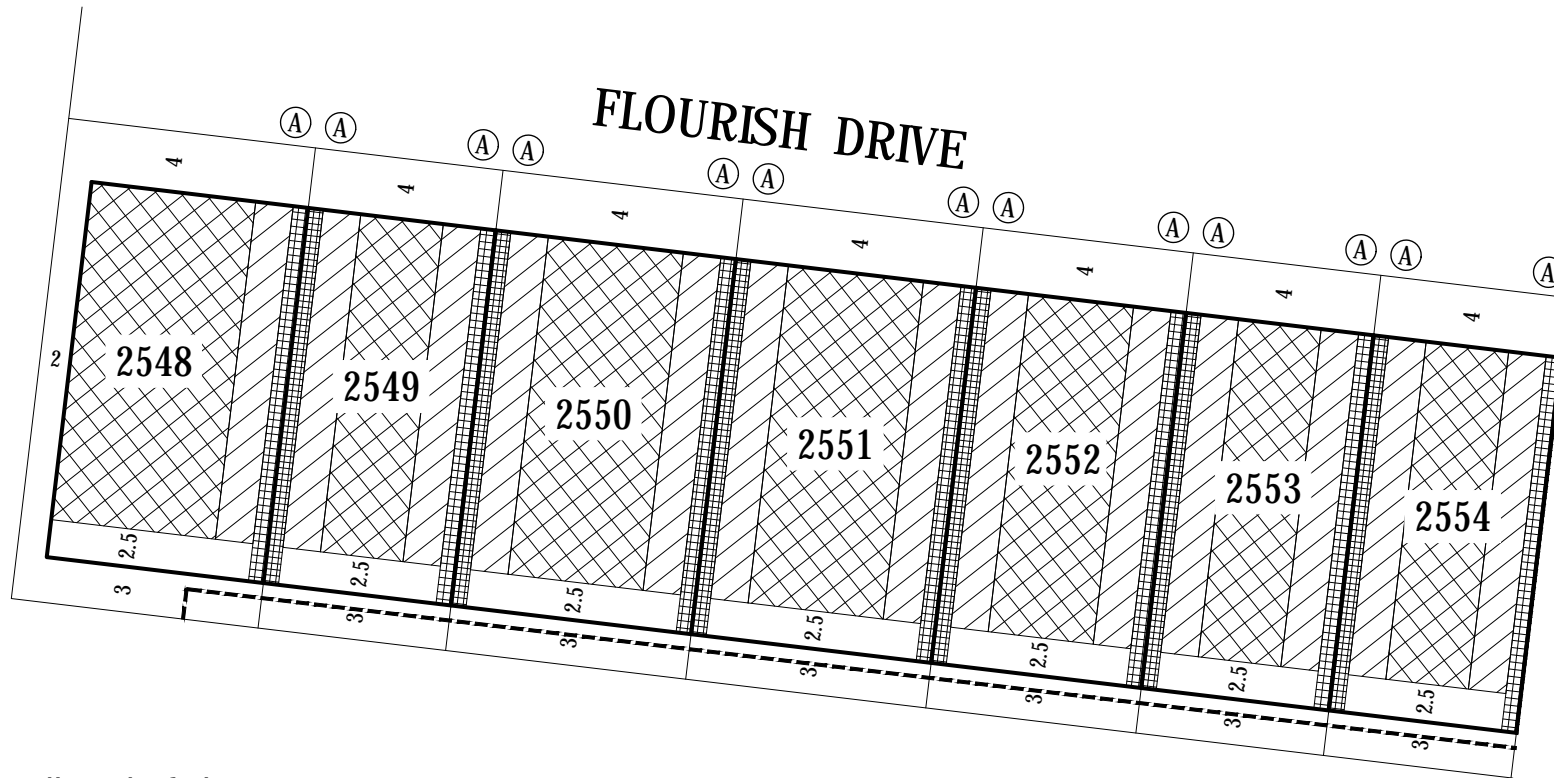
All details subject to City of Greater Geelong Council approval.

**ARMSTRONG Mt DUNED**

BUILDING ENVELOPE PLAN  
STAGE 25

**25/6**  
stage sheet





## NOTATIONS

- Single Storey Building Envelope (height not exceeding 3.6m)
- Overlooking Zone - Habitable room windows/raised open spaces are a source of overlooking
- Non Overlooking Zone - Habitable room windows/raised open spaces are not a source of overlooking
- Building to Boundary Zone

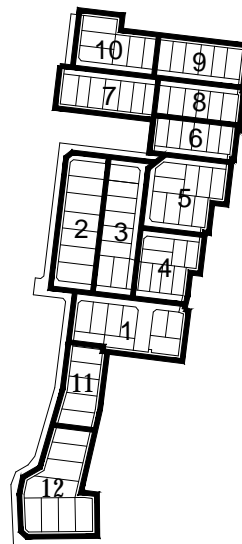
Building Envelope Boundary Profile Type

2 metre wide easement

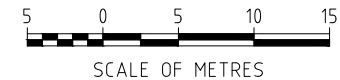
3 metre wide easement

**2505** Lot number

**3** Setback minimum required (if 0, a building can be constructed on the boundary provided that the building height and length requirements are met)



KEY TO SHEETS



This Building Envelope Plan is to be read in conjunction with the associated Building Envelope Profiles and Design Guidelines.

The registered proprietor/s of the lot are required to build in accordance with building envelopes shown hereon and in the "Profile Diagrams" in sheet 13.

Detailed design of roads, driveways and footpaths is provided in the relevant Engineering Plans.

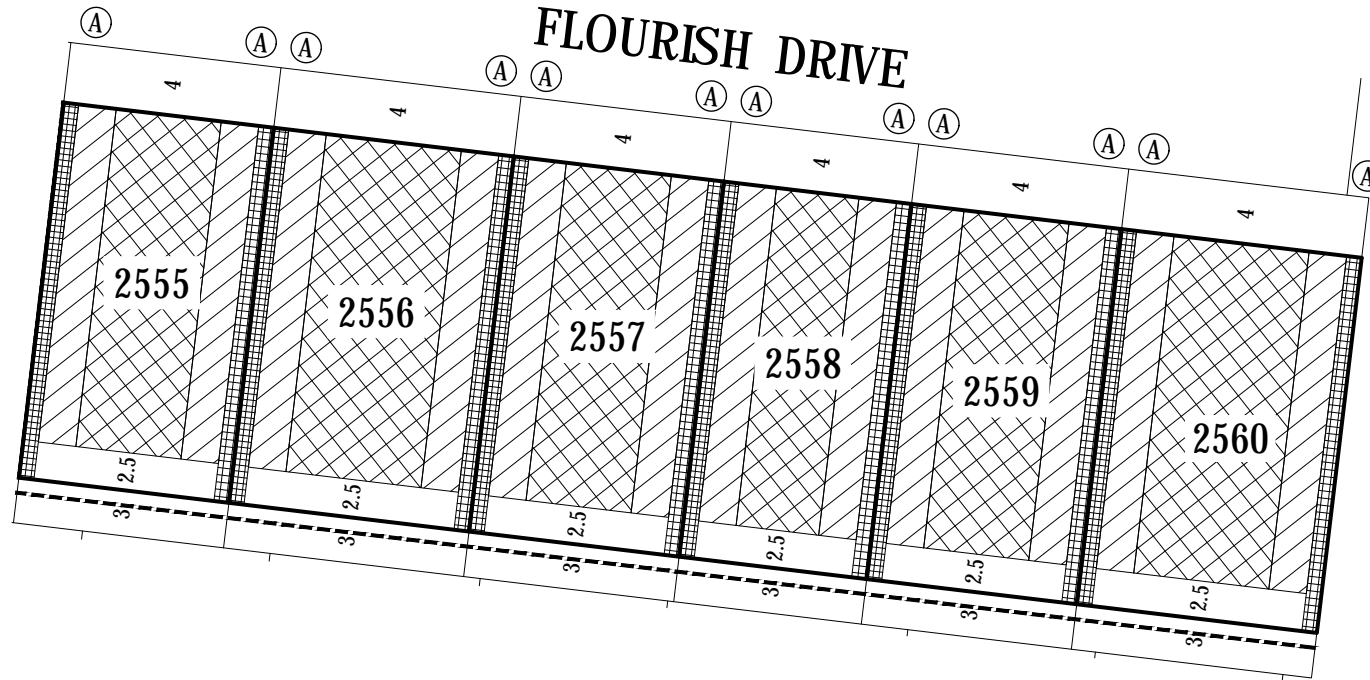
Detailed design of landscape works is provided in the relevant Landscape Plans.

All details subject to City of Greater Geelong Council approval.

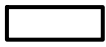
**ARMSTRONG Mt DUNED**

BUILDING ENVELOPE PLAN  
STAGE 25

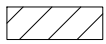
**25/7**  
stage sheet



## NOTATIONS



Single Storey Building Envelope (height not exceeding 3.6m)



Overlooking Zone - Habitable room windows/raised open spaces are a source of overlooking



Non Overlooking Zone - Habitable room windows/raised open spaces are not a source of overlooking



Building to Boundary Zone



Building Envelope Boundary Profile Type



2 metre wide easement



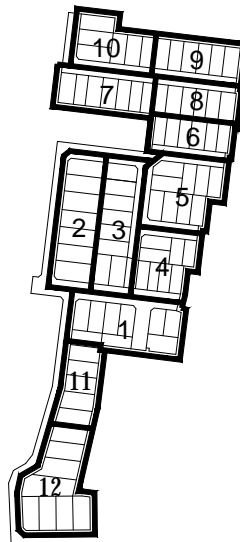
3 metre wide easement

2505

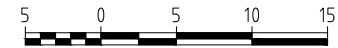
Lot number

3

Setback minimum required (if 0, a building can be constructed on the boundary provided that the building height and length requirements are met)



KEY TO SHEETS



SCALE OF METRES

This Building Envelope Plan is to be read in conjunction with the associated Building Envelope Profiles and Design Guidelines.

The registered proprietor/s of the lot are required to build in accordance with building envelopes shown hereon and in the "Profile Diagrams" in sheet 13.

Detailed design of roads, driveways and footpaths is provided in the relevant Engineering Plans.

Detailed design of landscape works is provided in the relevant Landscape Plans.

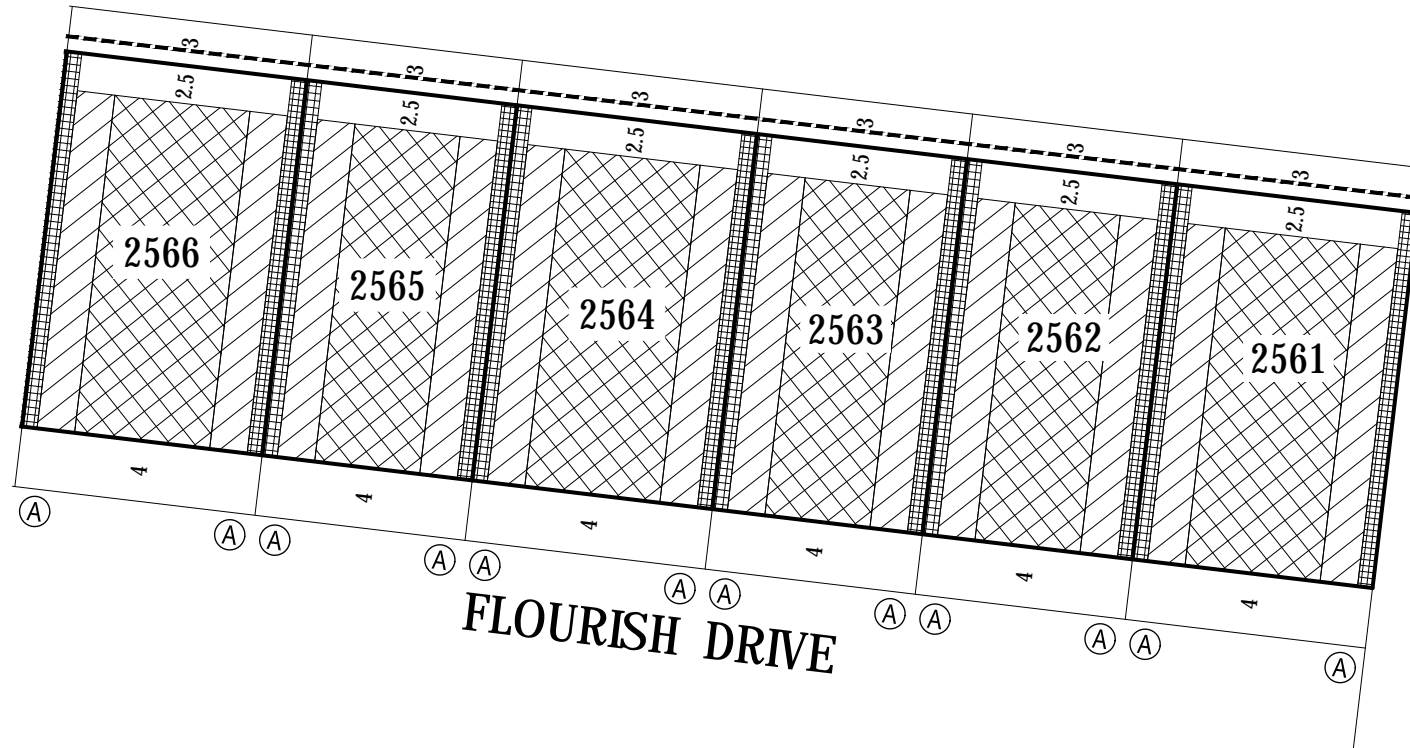
All details subject to City of Greater Geelong Council approval.

**ARMSTRONG Mt DUNED**

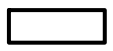

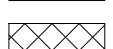

BUILDING ENVELOPE PLAN  
STAGE 25

**25/8**


stage sheet




## NOTATIONS

-  Single Storey Building Envelope (height not exceeding 3.6m)
-  Overlooking Zone - Habitable room windows/raised open spaces are a source of overlooking
-  Non Overlooking Zone - Habitable room windows/raised open spaces are not a source of overlooking
-  Building to Boundary Zone

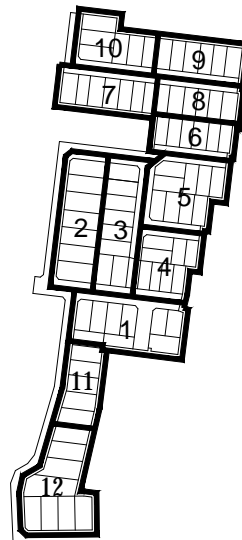
 Building Envelope Boundary Profile Type

 2 metre wide easement

 3 metre wide easement

**2505** Lot number

**3** Setback minimum required (if 0, a building can be constructed on the boundary provided that the building height and length requirements are met)



KEY TO SHEETS



This Building Envelope Plan is to be read in conjunction with the associated Building Envelope Profiles and Design Guidelines.

The registered proprietor/s of the lot are required to build in accordance with building envelopes shown hereon and in the "Profile Diagrams" in sheet 13.

Detailed design of roads, driveways and footpaths is provided in the relevant Engineering Plans.

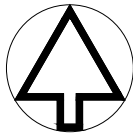
Detailed design of landscape works is provided in the relevant Landscape Plans.

All details subject to City of Greater Geelong Council approval.

**ARMSTRONG Mt DUNED**

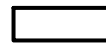
BUILDING ENVELOPE PLAN  
STAGE 25

**25/9**  
stage sheet

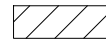


MGA ZONE 55

## NOTATIONS



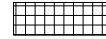
Single Storey Building Envelope (height not exceeding 3.6m)



Overlooking Zone - Habitable room windows/raised open spaces are a source of overlooking



Non Overlooking Zone - Habitable room windows/raised open spaces are not a source of overlooking



Building to Boundary Zone)



Building Envelope Boundary Profile Type



2 metre wide easement



3 metre wide easement

2505

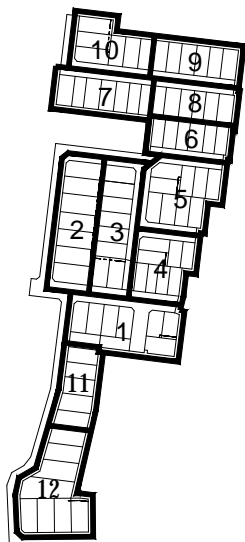
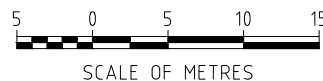
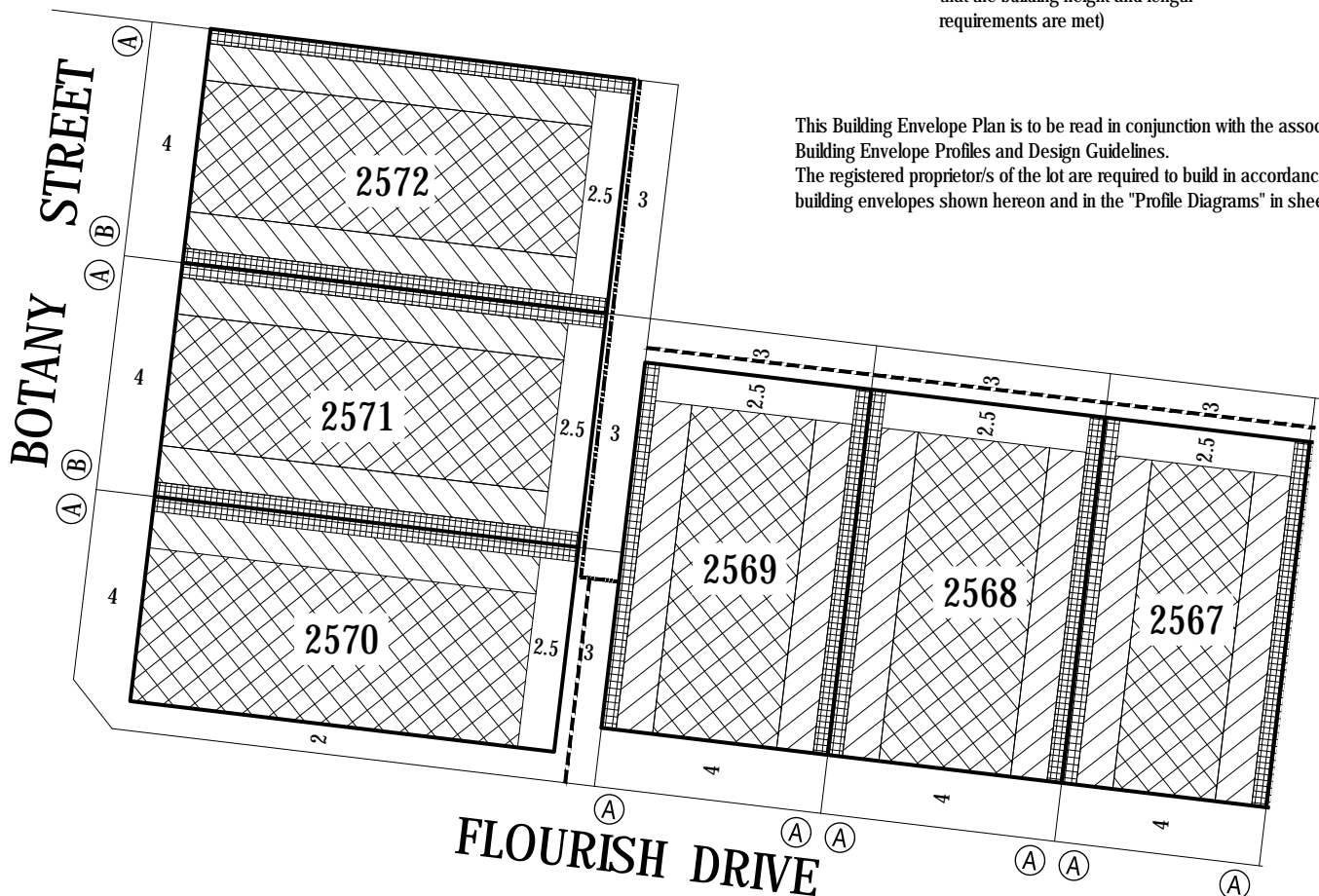
Lot number

3

Setback minimum required (if 0, a building can be constructed on the boundary provided that the building height and length requirements are met)

This Building Envelope Plan is to be read in conjunction with the associated Building Envelope Profiles and Design Guidelines.

The registered proprietor/s of the lot are required to build in accordance with building envelopes shown hereon and in the "Profile Diagrams" in sheet 13.



## KEY TO SHEETS

Detailed design of roads, driveways and footpaths is provided in the relevant Engineering Plans.

Detailed design of landscape works is provided in the relevant Landscape Plans.

All details subject to City of Greater Geelong Council approval.

## ARMSTRONG Mt DUNED

BUILDING ENVELOPE PLAN  
STAGE 25

25/10

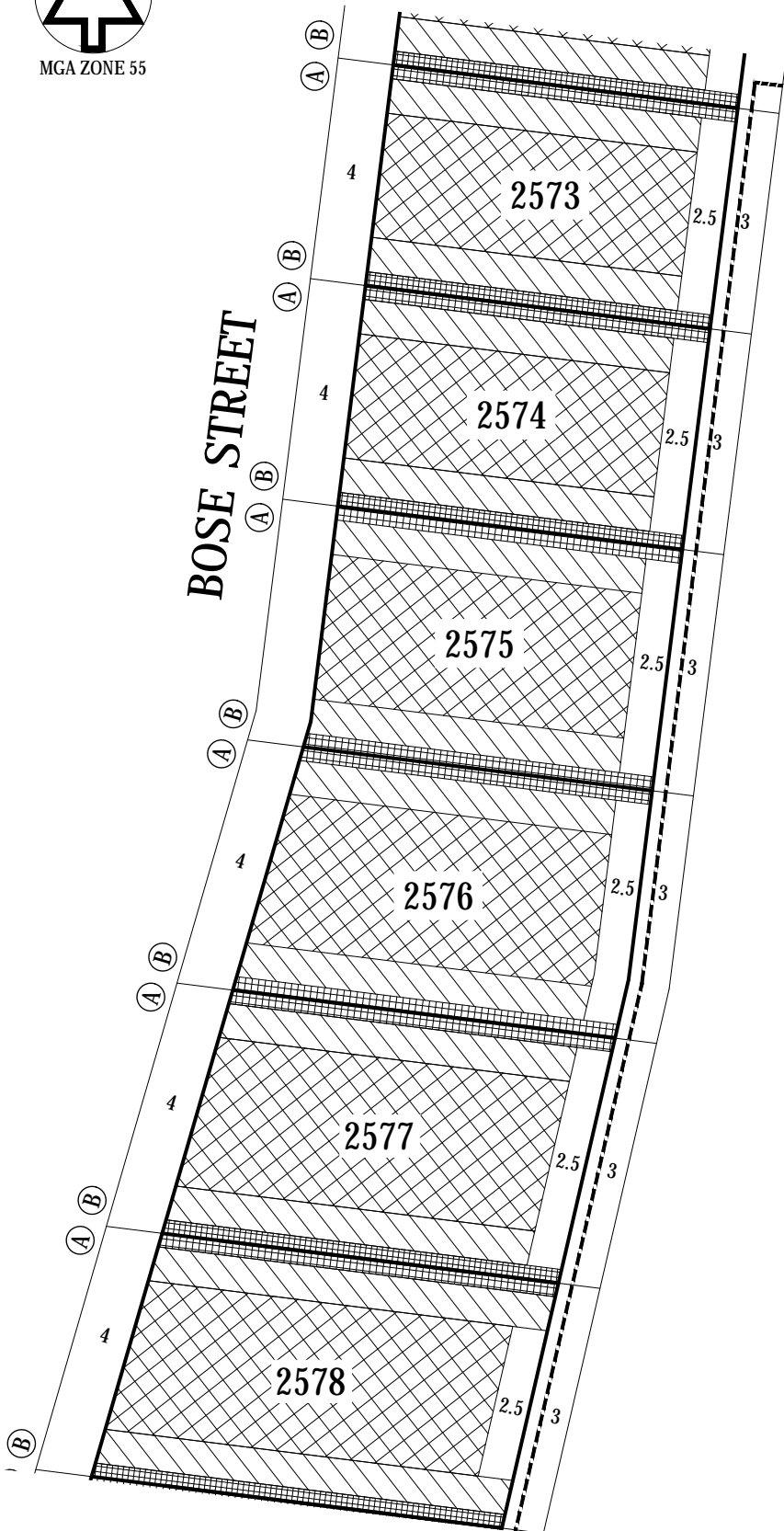
stage sheet

Sheet 10 of 13

February 2018  
Version:F



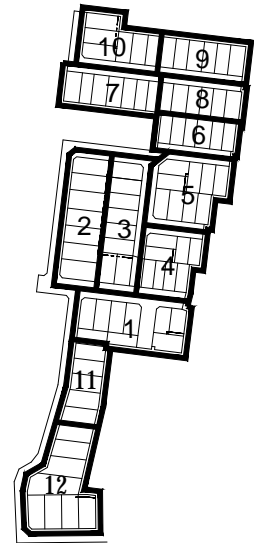
BOSE STREET



## NOTATIONS

	Single Storey Building Envelope (height not exceeding 3.6m)
	Overlooking Zone - Habitable room windows/raised open spaces are a source of overlooking
	Non Overlooking Zone - Habitable room windows/raised open spaces are not a source of overlooking
	Building to Boundary Zone)
	Building Envelope Boundary Profile Type
	2 metre wide easement
	3 metre wide easement
2505	Lot number
3	Setback minimum required (if 0, a building can be constructed on the boundary provided that the building height and length requirements are met)

This Building Envelope Plan is to be read in conjunction with the associated Building Envelope Profiles and Design Guidelines. The registered proprietor/s of the lot are required to build in accordance with building envelopes shown hereon and in the "Profile Diagrams" in sheet 13.



KEY TO SHEETS



SCALE OF METRES

Detailed design of roads, driveways and footpaths is provided in the relevant Engineering Plans.

Detailed design of landscape works is provided in the relevant Landscape Plans.

All details subject to City of Greater Geelong Council approval.

## ARMSTRONG Mt DUNED

BUILDING ENVELOPE PLAN  
STAGE 25

25/11

stage

sheet

Sheet 11 of 13

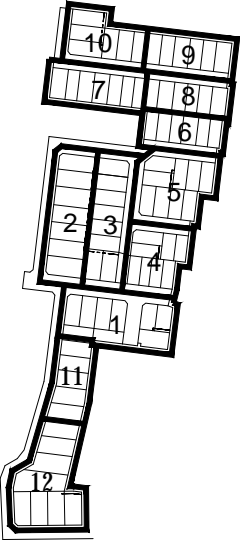
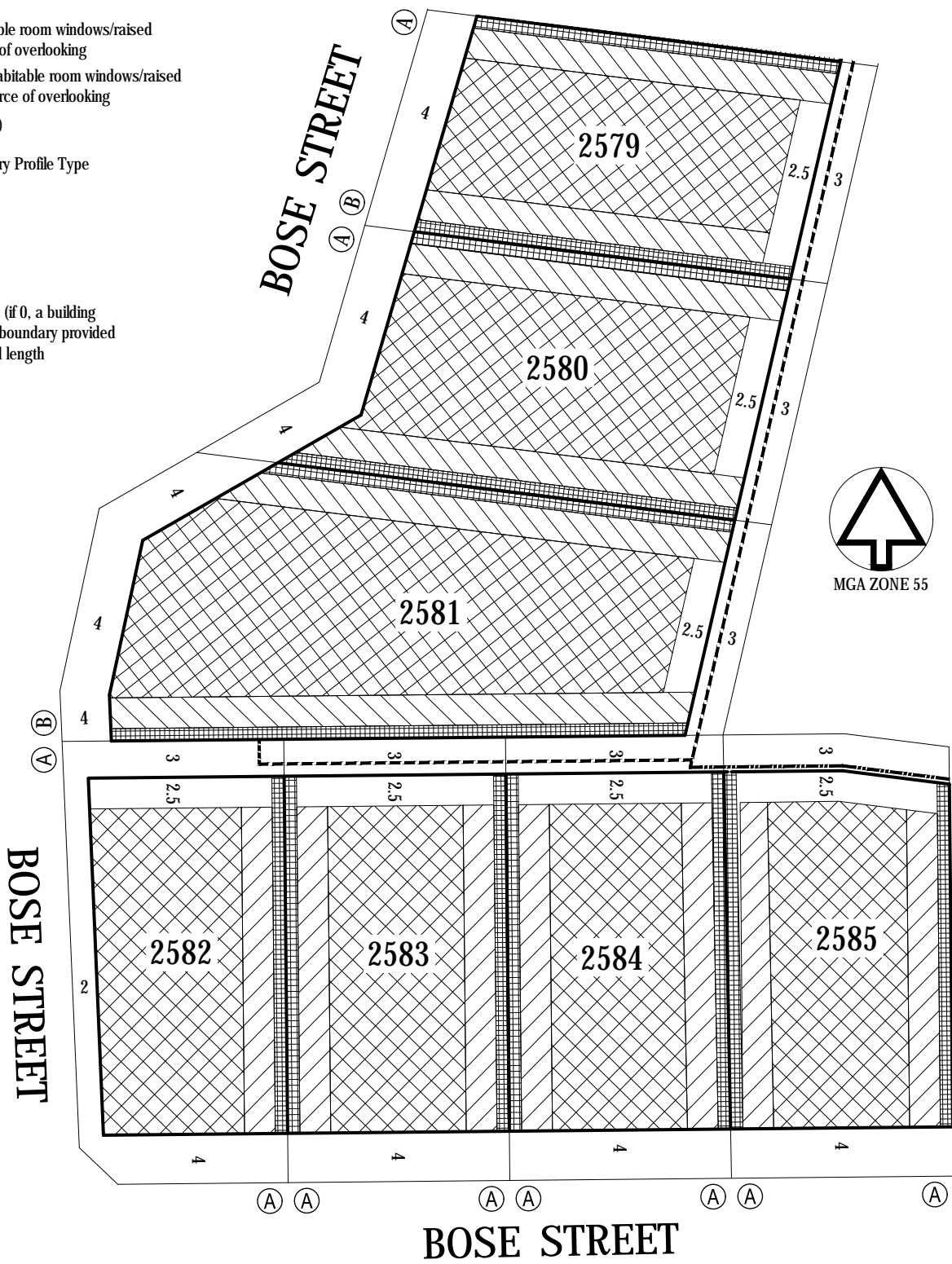
February 2018  
Version:F



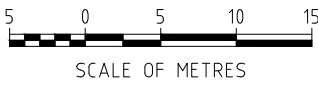
NOTATIONS

- Single Storey Building Envelope (height not exceeding 3.6m)
- Overlooking Zone - Habitable room windows/raised open spaces are a source of overlooking
- Non Overlooking Zone - Habitable room windows/raised open spaces are not a source of overlooking
- Building to Boundary Zone)
- Building Envelope Boundary Profile Type
- 2 metre wide easement
- 3 metre wide easement
- Lot number
- Setback minimum required (if 0, a building can be constructed on the boundary provided that the building height and length requirements are met)

This Building Envelope Plan is to be read in conjunction with the associated Building Envelope Profiles and Design Guidelines. The registered proprietor/s of the lot are required to build in accordance with building envelopes shown hereon and in the "Profile Diagrams" in sheet 13.



KEY TO SHEETS

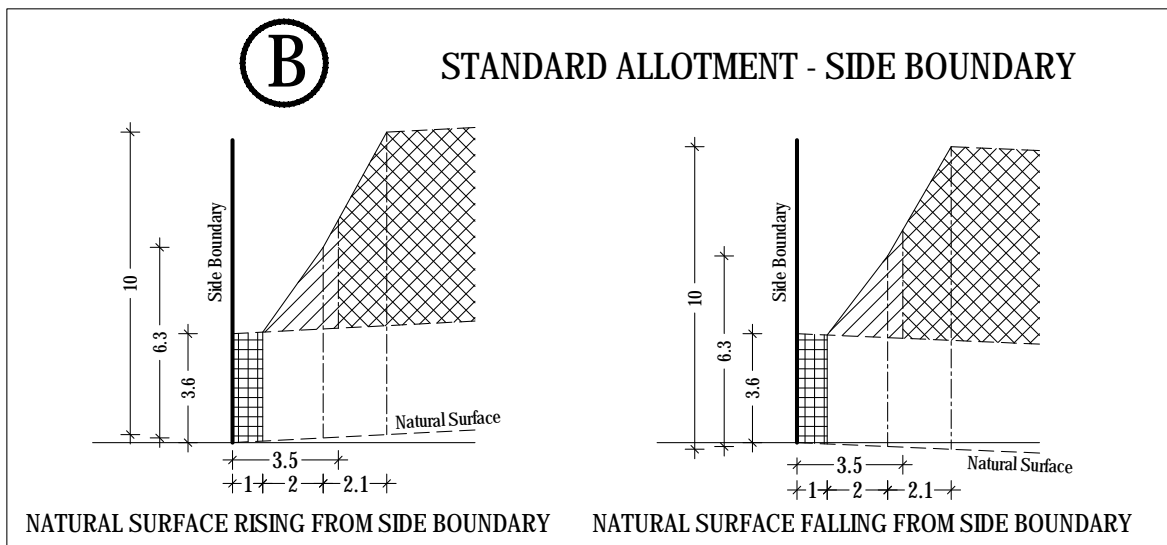
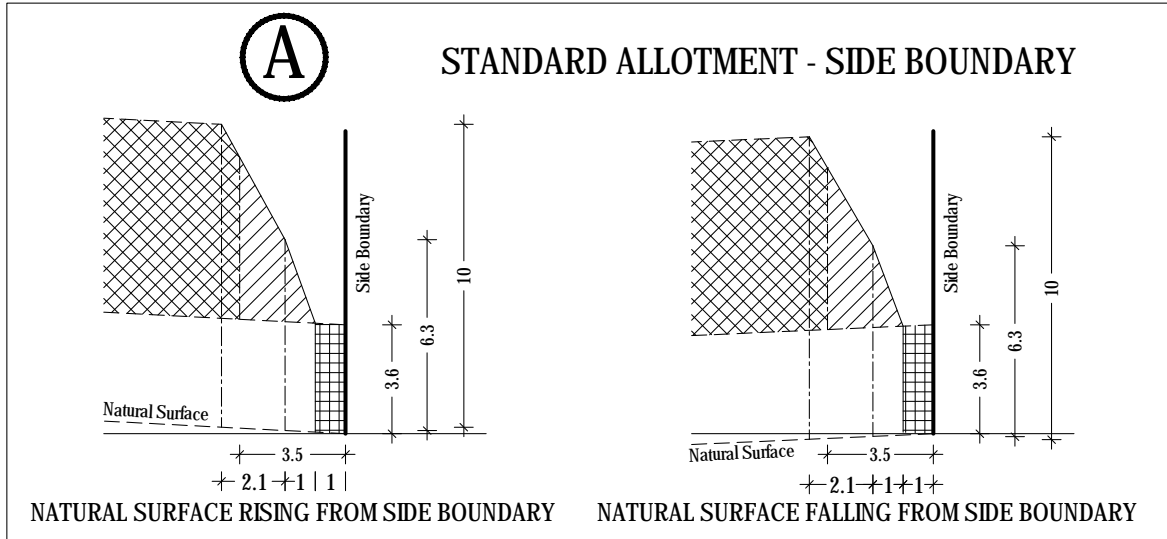


ARMSTRONG Mt DUNED

BUILDING ENVELOPE PLAN  
STAGE 25

25/12  
stage sheet

Detailed design of roads, driveways and footpaths is provided in the relevant Engineering Plans.  
Detailed design of landscape works is provided in the relevant Landscape Plans.  
All details subject to City of Greater Geelong Council approval.



SCALE 1:250@A4



## ARMSTRONG Mt DUNEED

BUILDING ENVELOPE PROFILES  
STAGE 25

25/13

stage                  sheet

Single Storey Building Envelope

**Overlooking Zone**  
Habitable room windows/raised open spaces are a source of overlooking

**Non Overlooking Zone**  
Habitable room windows/raised open spaces are not a source of overlooking

**Building to Boundary Zone**

sheet 13 of 13

February 2018  
Version:F