

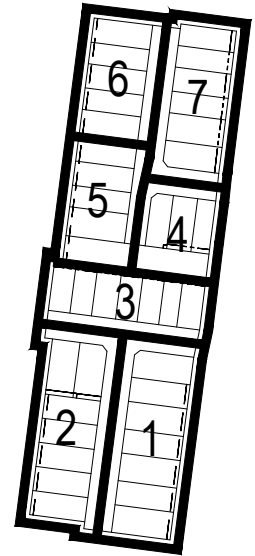
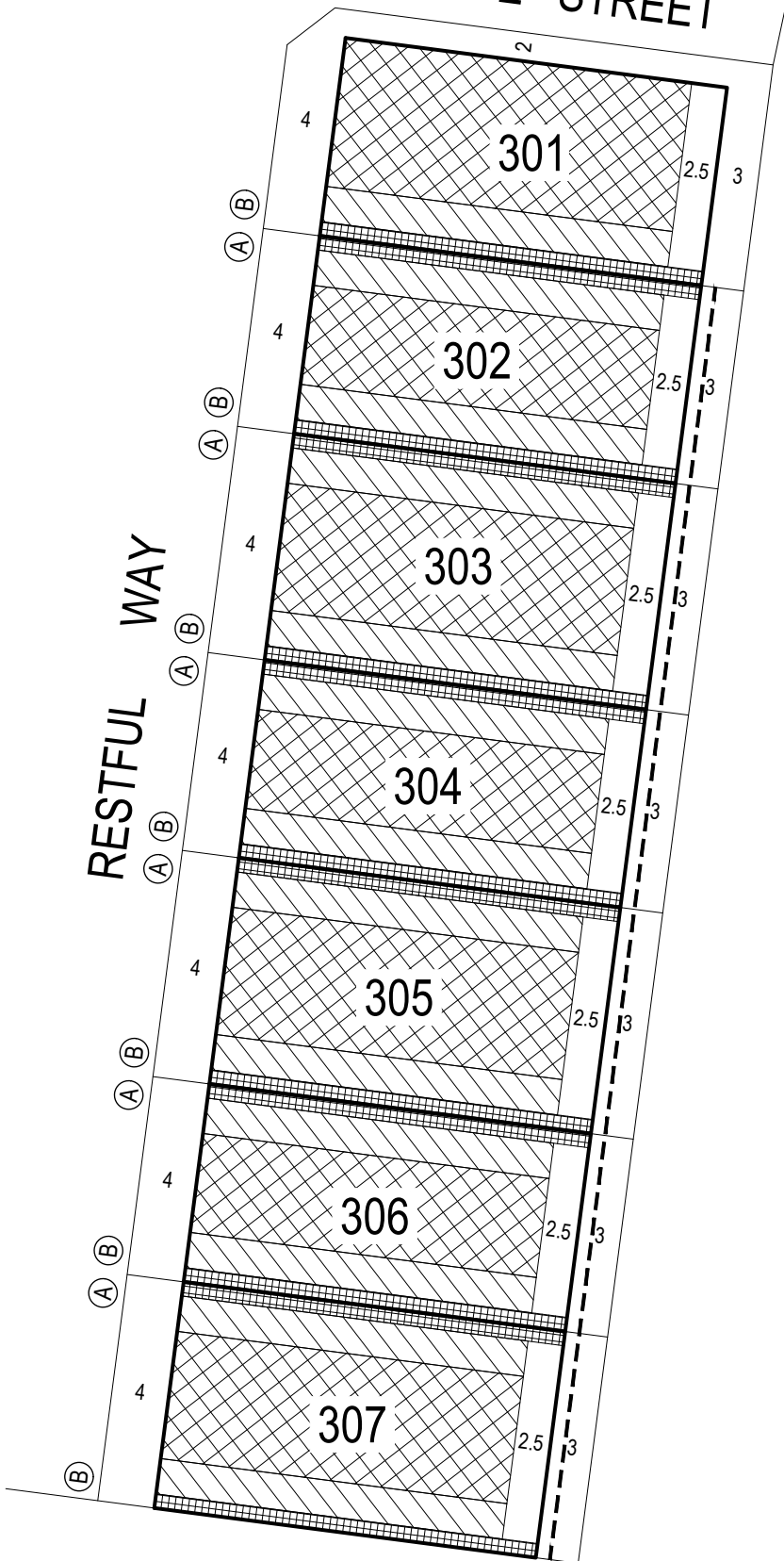
KEY TO SHEETS
 REFER TO SHEETS
 1 TO 8
 FOR DETAIL

SANCTUARY
 BUILDING ENVELOPE PLAN
 STAGE 3

July 2017
 Version:C

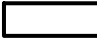
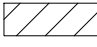

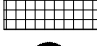





ABODE STREET



KEY TO SHEETS

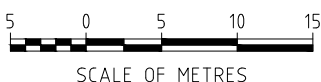
NOTATIONS

-  Single Storey Building Envelope (height not exceeding 3.6m)
-  Overlooking Zone - Habitable room windows/raised open spaces are a source of overlooking
-  Non Overlooking Zone - Habitable room windows/raised open spaces are not a source of overlooking
-  Building to Boundary Zone)
-  Building Envelope Boundary Profile Type
-  2 metre wide easement
-  3 metre wide easement
- 305** Lot number
- 3** Setback minimum required (if 0, a building can be constructed on the boundary provided that the building height and length requirements are met)

This Building Envelope Plan is to be read in conjunction with the associated Building Envelope Profiles and Design Guidelines. The registered proprietor/s of the lot are required to build in accordance with building envelopes shown hereon and in the "Profile Diagrams" in sheet 8. Detailed design of roads, driveways and footpaths is provided in the relevant Engineering Plans. Detailed design of landscape works is provided in the relevant Landscape Plans. All details subject to City of Greater Geelong Council approval.

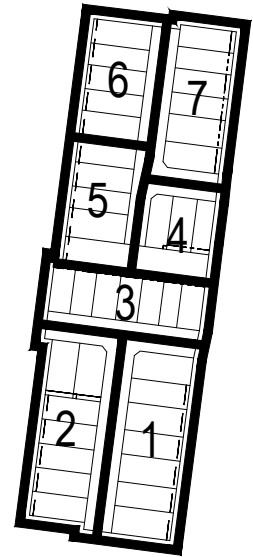
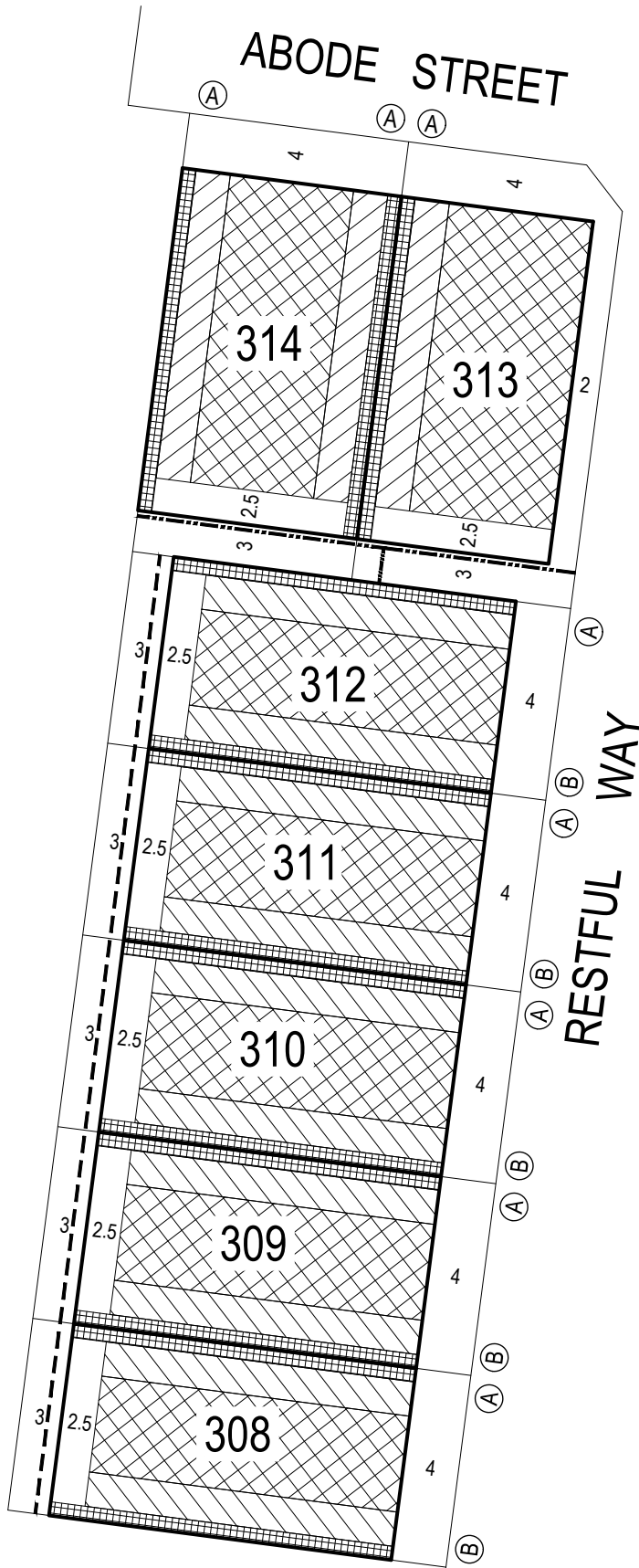
SANCTUARY
BUILDING ENVELOPE PLAN
STAGE 3

3 / 1
stage sheet




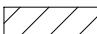




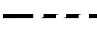


MGA ZONE 55



KEY TO SHEETS

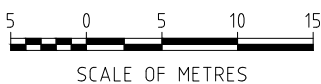
NOTATIONS

-  Single Storey Building Envelope (height not exceeding 3.6m)
-  Overlooking Zone - Habitable room windows/raised open spaces are a source of overlooking
-  Non Overlooking Zone - Habitable room windows/raised open spaces are not a source of overlooking
-  Building to Boundary Zone)
-  Building Envelope Boundary Profile Type
-  2 metre wide easement
-  3 metre wide easement
- 305** Lot number
- 3** Setback minimum required (if 0, a building can be constructed on the boundary provided that the building height and length requirements are met)

This Building Envelope Plan is to be read in conjunction with the associated Building Envelope Profiles and Design Guidelines.
 The registered proprietor/s of the lot are required to build in accordance with building envelopes shown hereon and in the "Profile Diagrams" in sheet 8.
 Detailed design of roads, driveways and footpaths is provided in the relevant Engineering Plans.
 Detailed design of landscape works is provided in the relevant Landscape Plans.
 All details subject to City of Greater Geelong Council approval.





SANCTUARY
 BUILDING ENVELOPE PLAN
 STAGE 3




3 / 2
 stage sheet

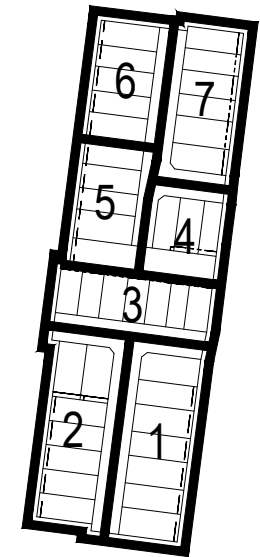
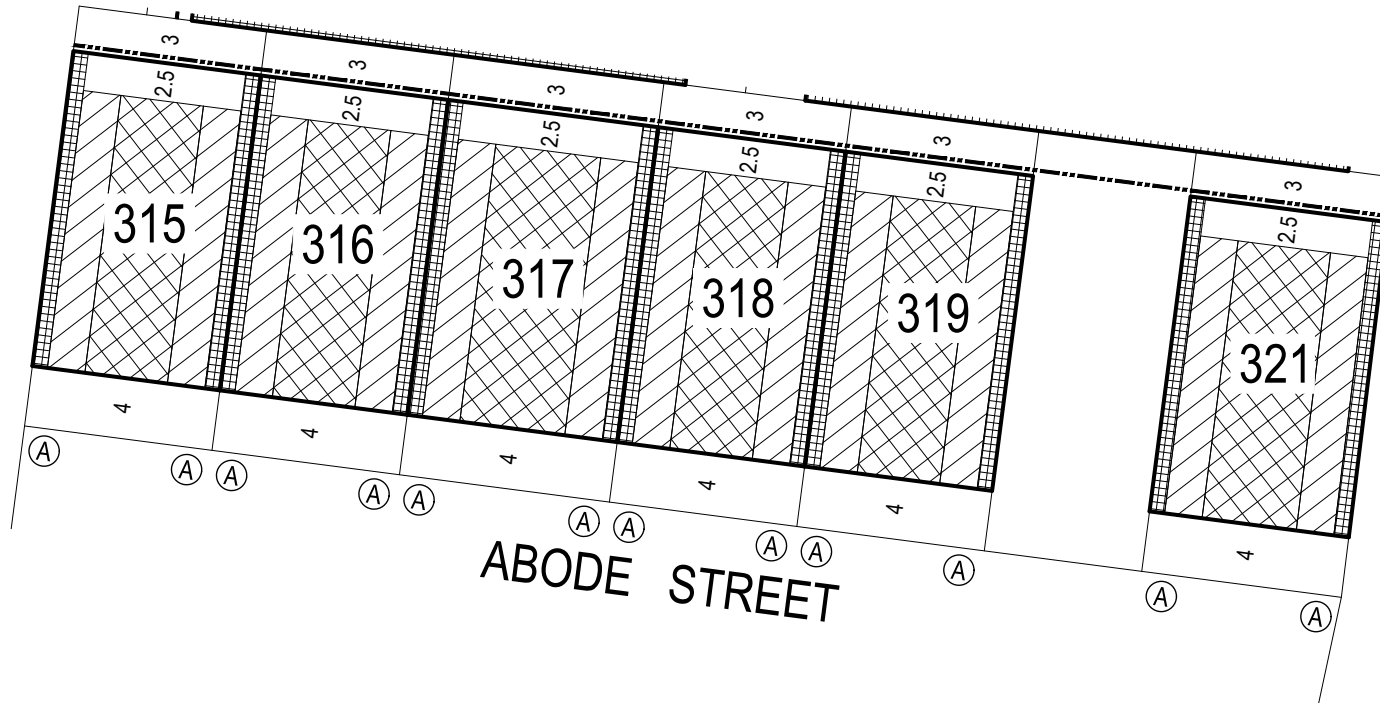




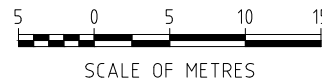
NOTATIONS

-  Single Storey Building Envelope (height not exceeding 3.6m)
-  Overlooking Zone - Habitable room windows/raised open spaces are a source of overlooking
-  Non Overlooking Zone - Habitable room windows/raised open spaces are not a source of overlooking
-  Building to Boundary Zone

-  Building Envelope Boundary Profile Type
-  2 metre wide easement
-  3 metre wide easement
- 305** Lot number
- 3** Setback minimum required (if 0, a building can be constructed on the boundary provided that the building height and length requirements are met)



KEY TO SHEETS



This Building Envelope Plan is to be read in conjunction with the associated Building Envelope Profiles and Design Guidelines.

The registered proprietor/s of the lot are required to build in accordance with building envelopes shown hereon and in the "Profile Diagrams" in sheet 8.

Detailed design of roads, driveways and footpaths is provided in the relevant Engineering Plans.

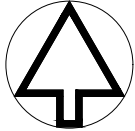
Detailed design of landscape works is provided in the relevant Landscape Plans.

All details subject to City of Greater Geelong Council approval.

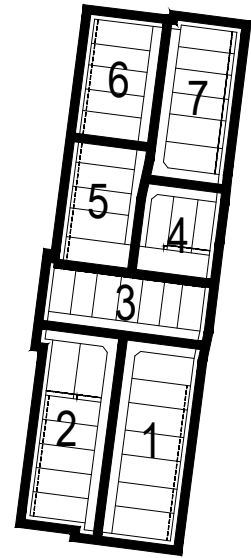
SANCTUARY

BUILDING ENVELOPE PLAN
STAGE 3

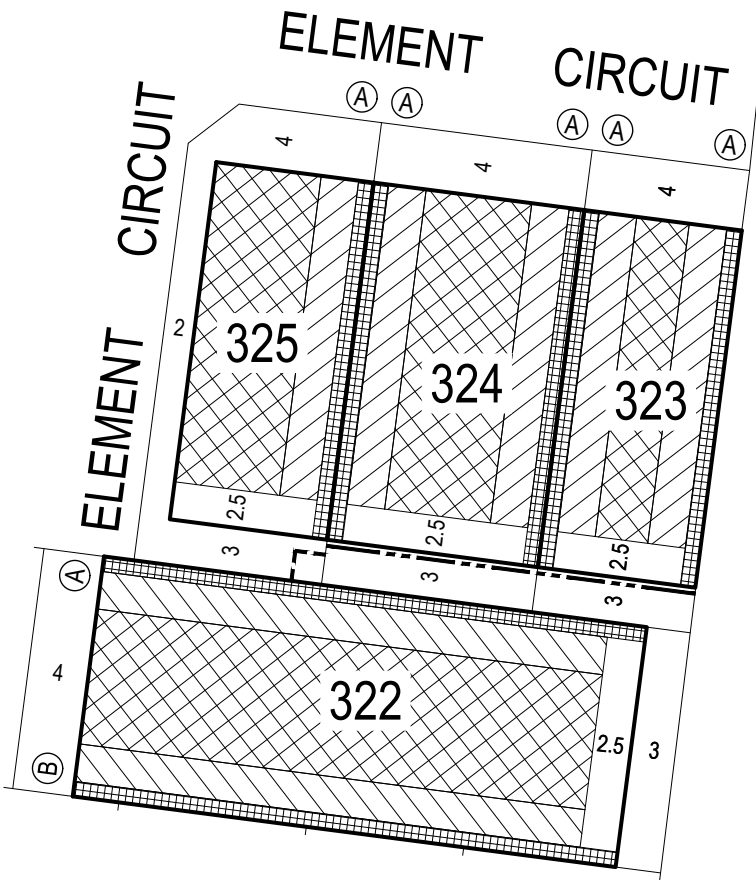
3 / 3
stage sheet



MGA ZONE 55



KEY TO SHEETS



NOTATIONS

- Single Storey Building Envelope (height not exceeding 3.6m)
- Overlooking Zone - Habitable room windows/raised open spaces are a source of overlooking
- Non Overlooking Zone - Habitable room windows/raised open spaces are not a source of overlooking (Building to Boundary Zone)
- Building Envelope Boundary Profile Type
- 2 metre wide easement
- 3 metre wide easement
- 305** Lot number
- 3** Setback minimum required (if 0, a building can be constructed on the boundary provided that the building height and length requirements are met)



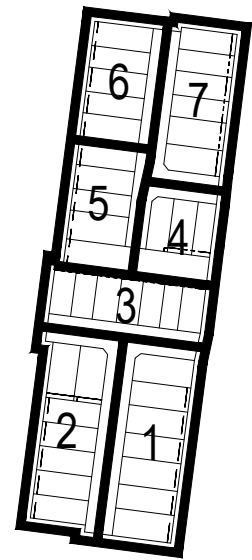
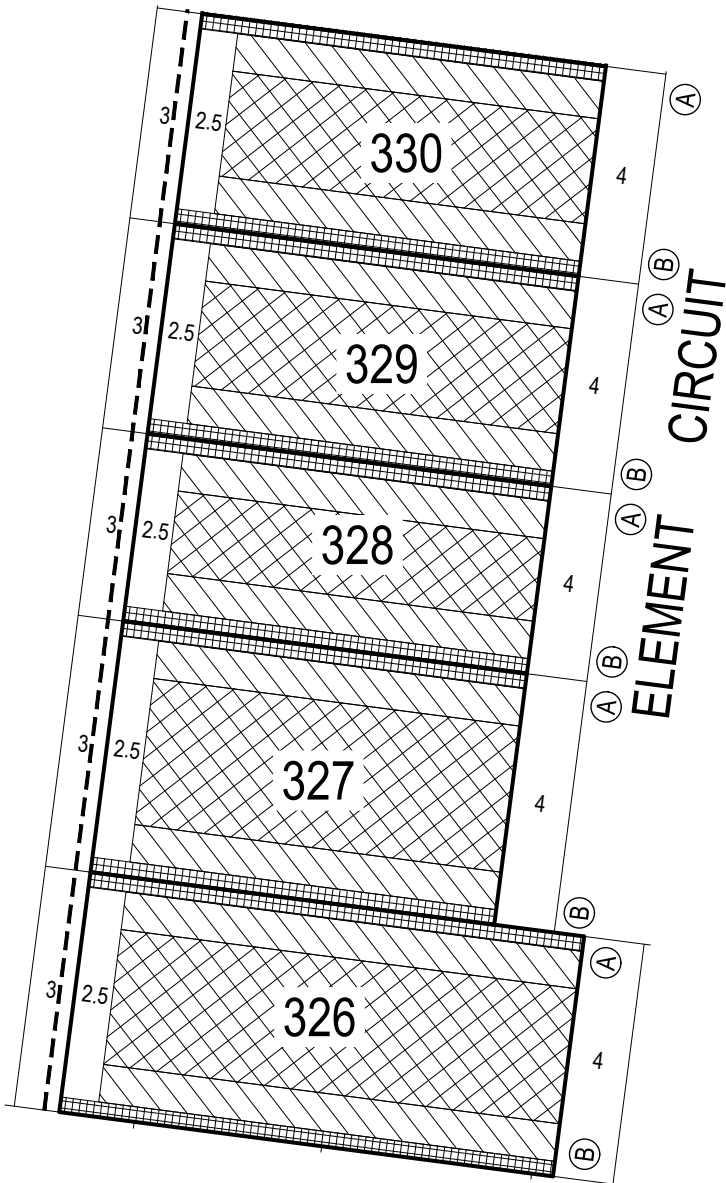
This Building Envelope Plan is to be read in conjunction with the associated Building Envelope Profiles and Design Guidelines.
 The registered proprietor/s of the lot are required to build in accordance with building envelopes shown hereon and in the "Profile Diagrams" in sheet 8.
 Detailed design of roads, driveways and footpaths is provided in the relevant Engineering Plans.
 Detailed design of landscape works is provided in the relevant Landscape Plans.
 All details subject to City of Greater Geelong Council approval.

SANCTUARY
 BUILDING ENVELOPE PLAN
 STAGE 3

3 / 4
 stage sheet



MGA ZONE 55



KEY TO SHEETS

NOTATIONS

- Single Storey Building Envelope (height not exceeding 3.6m)
- Overlooking Zone - Habitable room windows/raised open spaces are a source of overlooking
- Non Overlooking Zone - Habitable room windows/raised open spaces are not a source of overlooking
- Building to Boundary Zone)
- Building Envelope Boundary Profile Type
- 2 metre wide easement
- 3 metre wide easement
- 305** Lot number
- 3** Setback minimum required (if 0, a building can be constructed on the boundary provided that the building height and length requirements are met)

This Building Envelope Plan is to be read in conjunction with the associated Building Envelope Profiles and Design Guidelines.
 The registered proprietor/s of the lot are required to build in accordance with building envelopes shown hereon and in the "Profile Diagrams" in sheet 8.
 Detailed design of roads, driveways and footpaths is provided in the relevant Engineering Plans.
 Detailed design of landscape works is provided in the relevant Landscape Plans.
 All details subject to City of Greater Geelong Council approval.

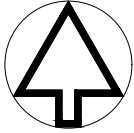
SANCTUARY

BUILDING ENVELOPE PLAN
STAGE 3

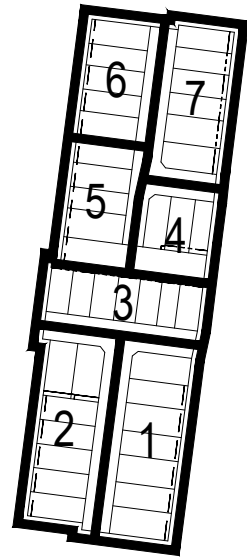
3/5
stage sheet



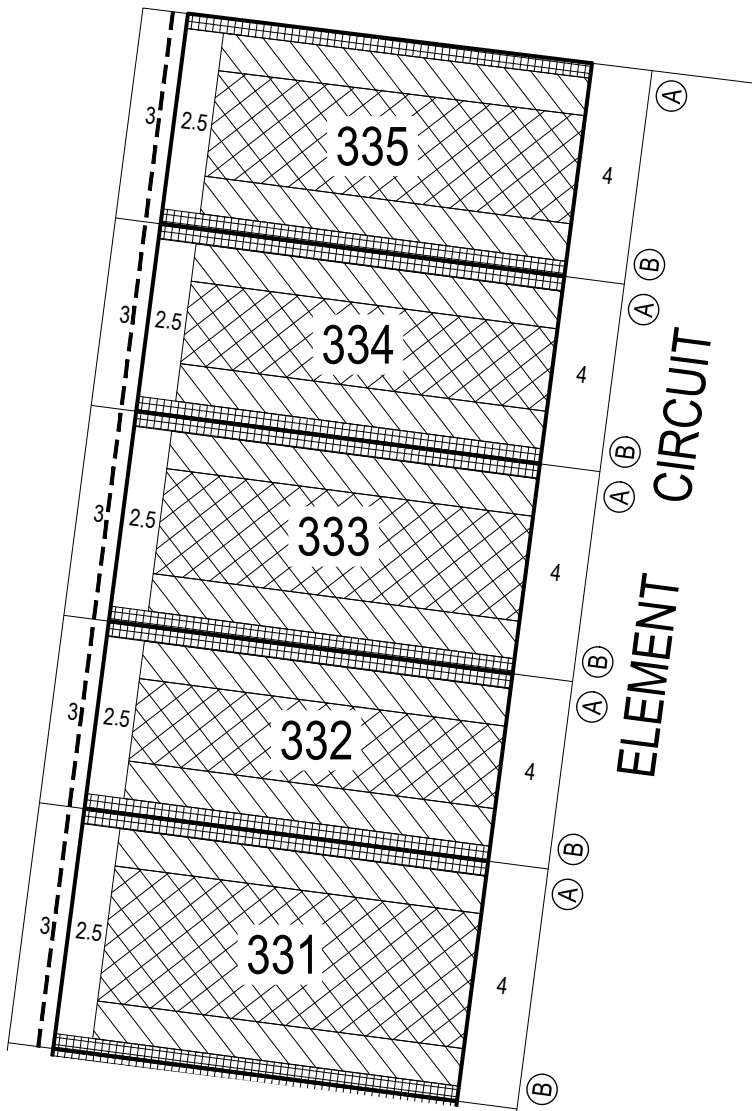
SCALE OF METRES



MGA ZONE 55



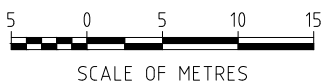
KEY TO SHEETS



NOTATIONS

- Single Storey Building Envelope (height not exceeding 3.6m)
- Overlooking Zone - Habitable room windows/raised open spaces are a source of overlooking
- Non Overlooking Zone - Habitable room windows/raised open spaces are not a source of overlooking (Building to Boundary Zone)
- Building Envelope Boundary Profile Type
- 2 metre wide easement
- 3 metre wide easement
- 305** Lot number
- 3** Setback minimum required (if 0, a building can be constructed on the boundary provided that the building height and length requirements are met)

This Building Envelope Plan is to be read in conjunction with the associated Building Envelope Profiles and Design Guidelines.
 The registered proprietor/s of the lot are required to build in accordance with building envelopes shown hereon and in the "Profile Diagrams" in sheet 8.
 Detailed design of roads, driveways and footpaths is provided in the relevant Engineering Plans.
 Detailed design of landscape works is provided in the relevant Landscape Plans.
 All details subject to City of Greater Geelong Council approval.



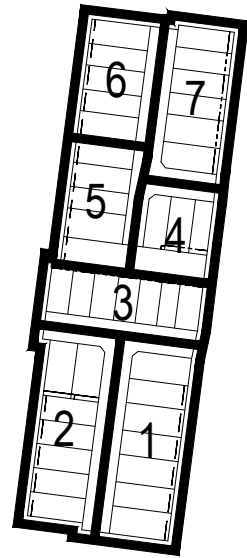
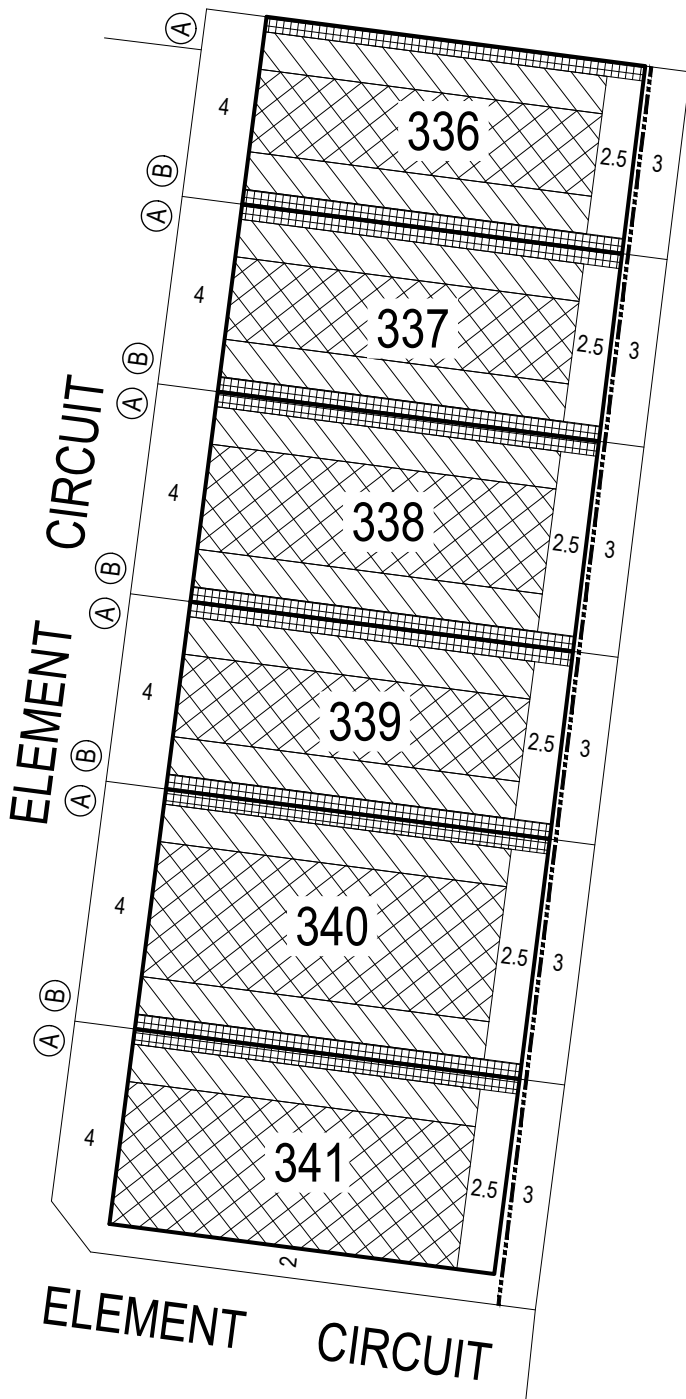
SANCTUARY

BUILDING ENVELOPE PLAN
STAGE 3

3 / 6
stage sheet



MGA ZONE 55

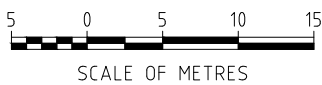


KEY TO SHEETS

NOTATIONS

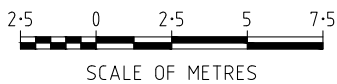
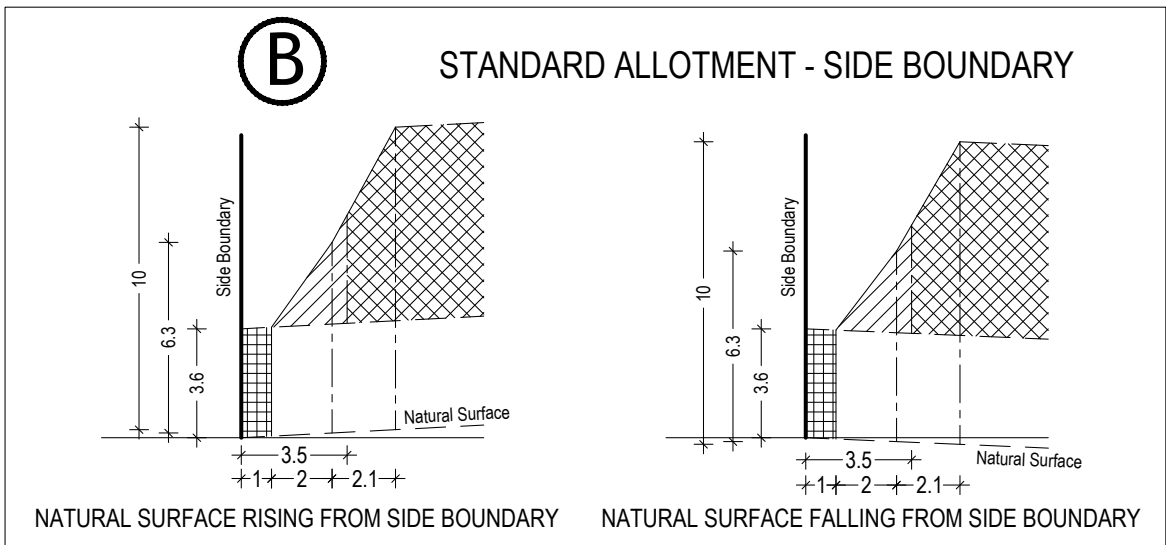
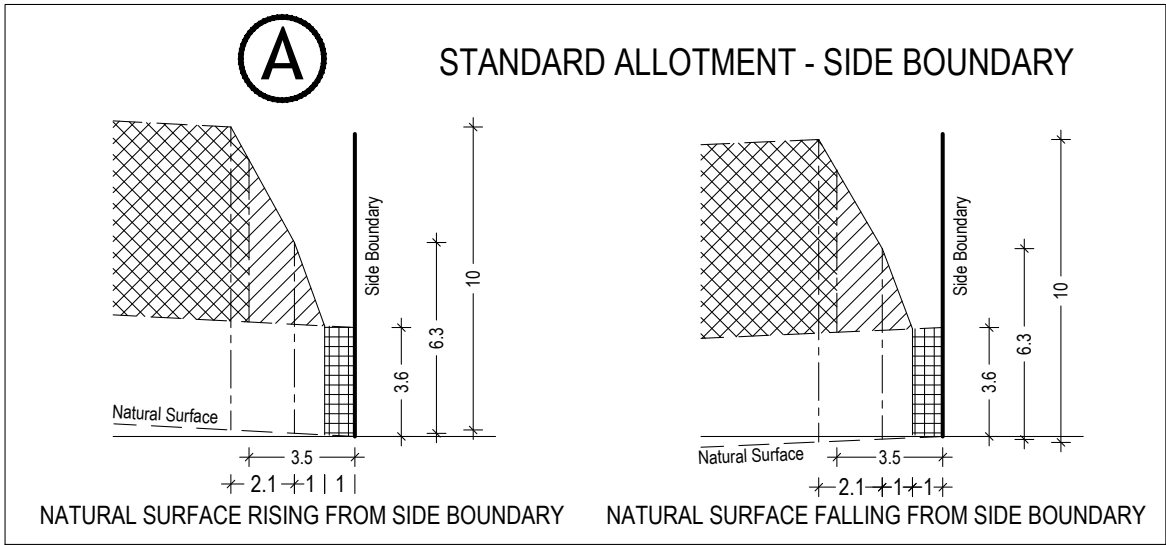
- Single Storey Building Envelope (height not exceeding 3.6m)
- Overlooking Zone - Habitable room windows/raised open spaces are a source of overlooking
- Non Overlooking Zone - Habitable room windows/raised open spaces are not a source of overlooking
- Building to Boundary Zone
- Building Envelope Boundary Profile Type
- 2 metre wide easement
- 3 metre wide easement
- 305** Lot number
- 3** Setback minimum required (if 0, a building can be constructed on the boundary provided that the building height and length requirements are met)

This Building Envelope Plan is to be read in conjunction with the associated Building Envelope Profiles and Design Guidelines. The registered proprietor/s of the lot are required to build in accordance with building envelopes shown hereon and in the "Profile Diagrams" in sheet 8. Detailed design of roads, driveways and footpaths is provided in the relevant Engineering Plans. Detailed design of landscape works is provided in the relevant Landscape Plans. All details subject to City of Greater Geelong Council approval.



SANCTUARY
BUILDING ENVELOPE PLAN
STAGE 3

3 / 7
stage sheet



SANCTUARY

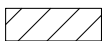
BUILDING ENVELOPE PROFILES
STAGE 3

3 / 8
stage sheet

Single Storey Building Envelope



Non Overlooking Zone
Habitable room windows/raised open spaces are not a source of overlooking



Overlooking Zone
Habitable room windows/raised open spaces are a source of overlooking



Building to Boundary Zone