

GREATER GEELONG CITY COUNCIL
PLANNING & ENVIRONMENT ACT 1987
GREATER GEELONG PLANNING SCHEME

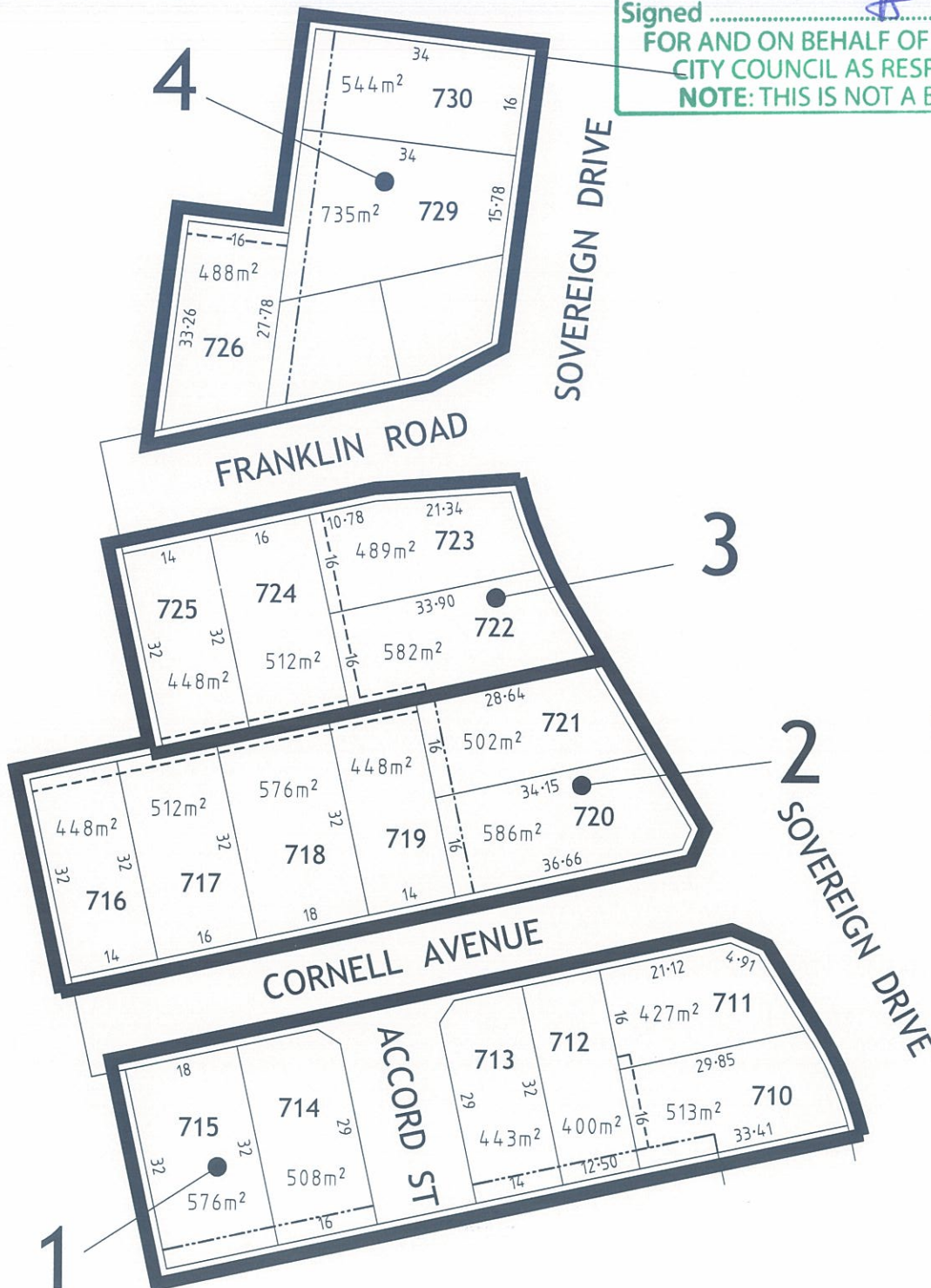
Endorsed Plan referred to in Permit No: 496/2012/R

STAGE 7 BUILDING ENVELOPES

Signed AS Date 30/1/15

FOR AND ON BEHALF OF THE GREATER GEELONG
CITY COUNCIL AS RESPONSIBLE AUTHORITY

NOTE: THIS IS NOT A BUILDING APPROVAL.



KEY TO SHEETS

REFER TO SHEETS
1 TO 5
FOR DETAIL



MGA ZONE 55

ARMSTRONG Mt DUNEED

**BUILDING ENVELOPE PLAN
STAGE 7**

March 2014
Version:H

NOTATIONS

- Single Storey Building Envelope (height not exceeding 3.6m)
- Overlooking Zone - Habitable room windows/raised open spaces are a source of overlooking
- Non Overlooking Zone - Habitable room windows/raised open spaces are not a source of overlooking
- Building to Boundary Zone
- Building Envelope Boundary Profile Type
 - 2 metre wide easement
 - 3 metre wide easement

712

Lot number

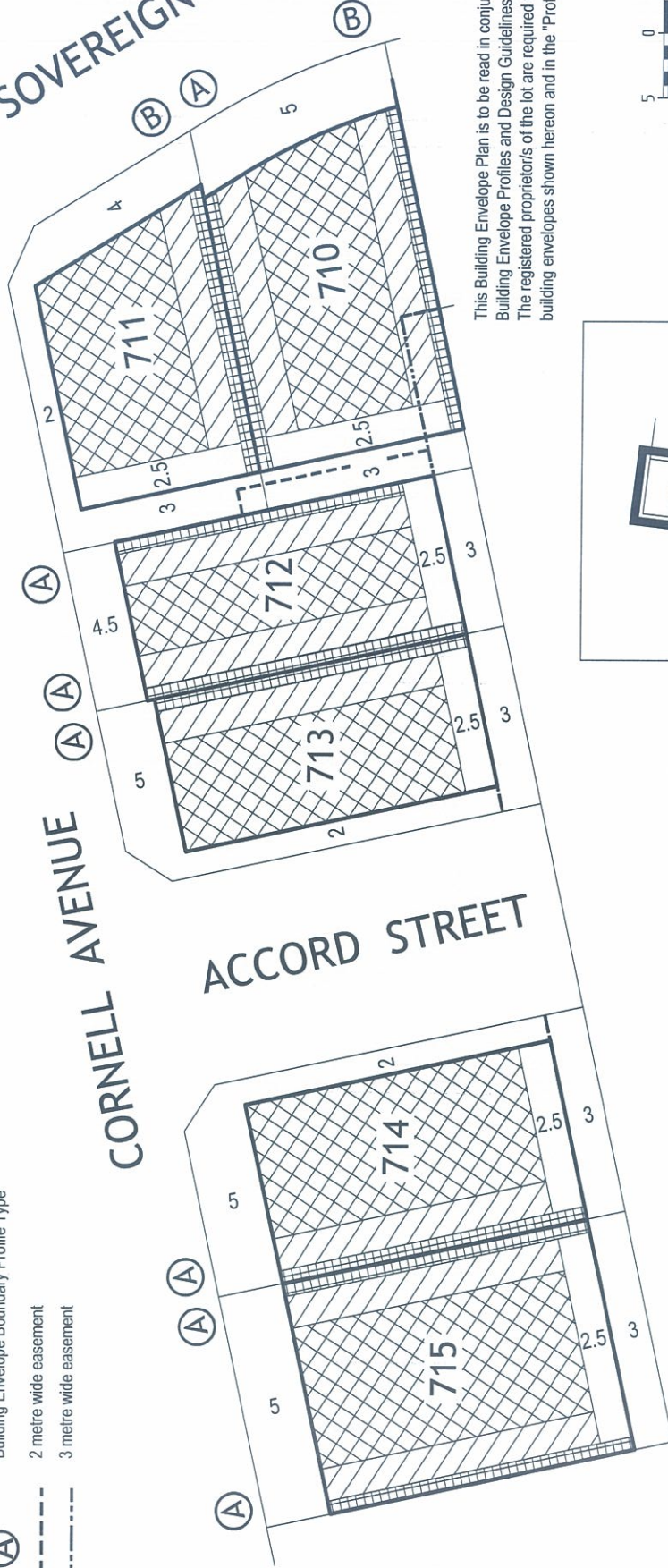
3

Setback minimum required (if 0, a building can be constructed on the boundary provided that the building height and length requirements are met)

SOVEREIGN DRIVE

CORNELL AVENUE

ACCORD STREET



This Building Envelope Plan is to be read in conjunction with the associated Building Envelope Profiles and Design Guidelines. The registered proprietor/s of the lot are required to build in accordance with building envelopes shown hereon and in the "Profile Diagrams" in sheet 5.



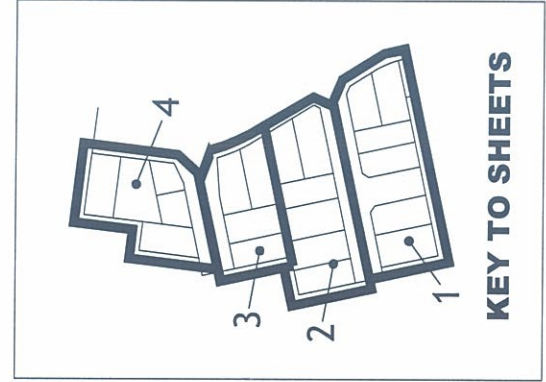
ARMSTRONG Mt DUNEED BUILDING ENVELOPE PLAN STAGE 7

7/1

stage sheet

Sheet 1 of 5

March 2014
Version: H



KEY TO SHEETS

Detailed design of roads, driveways and footpaths is provided in the relevant Engineering Plans.
Detailed design of landscape works is provided in the relevant Landscape Plans.
All details subject to City of Greater Geelong Council approval.

NOTATIONS

Single Storey Building Envelope (height not exceeding 3.6m)



Overlooking Zone - Habitable room windows/raised open spaces are a source of overlooking



Non Overlooking Zone - Habitable room windows/raised open spaces are not a source of overlooking



Building to Boundary Zone



Building Envelope Boundary Profile Type



2 metre wide easement



3 metre wide easement

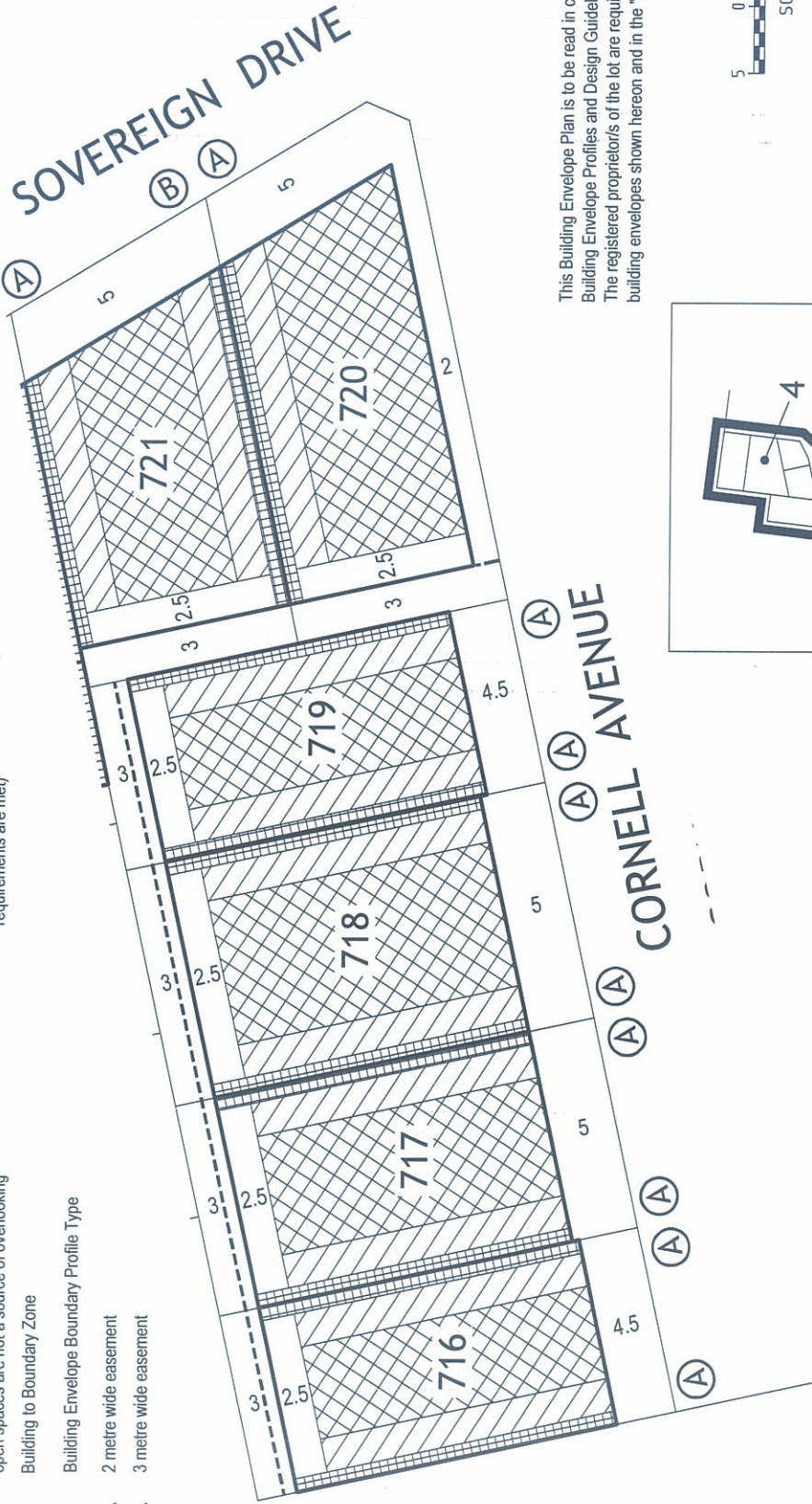


712

Lot number

Setback minimum required (if 0, a building can be constructed on the boundary provided that the building height and length requirements are met)

3

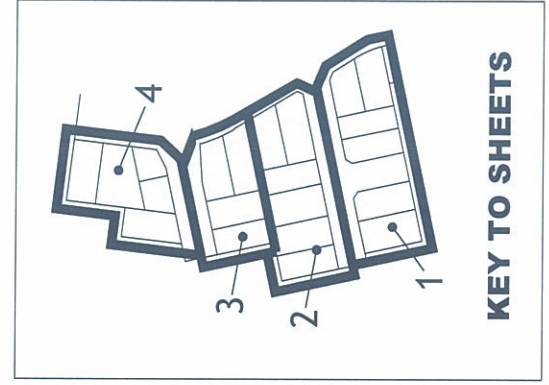


This Building Envelope Plan is to be read in conjunction with the associated Building Envelope Profiles and Design Guidelines.
The registered proprietor/s of the lot are required to build in accordance with building envelopes shown hereon and in the "Profile Diagrams" in sheet 5.



MGA ZONE 55

Detailed design of roads, driveways and footpaths is provided in the relevant Engineering Plans.
Detailed design of landscape works is provided in the relevant Landscape Plans.
All details subject to City of Greater Geelong Council approval.



KEY TO SHEETS

ARMSTRONG Mt DUNEED BUILDING ENVELOPE PLAN STAGE 7

7/2
stage sheet

Sheet 2 of 5

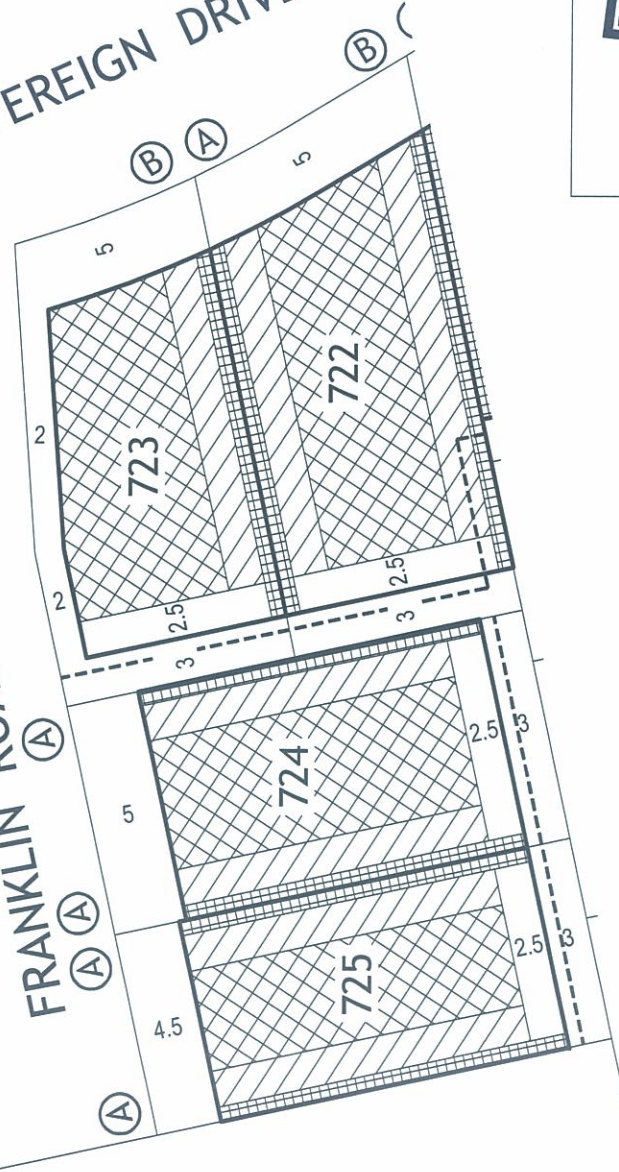
March 2014
Version: H

NOTATIONS

	Single Storey Building Envelope (height not exceeding 3.6m)
	Overlooking Zone - Habitable room windows/raised open spaces are a source of overlooking
	Non Overlooking Zone - Habitable room windows/raised open spaces are not a source of overlooking
	Building to Boundary Zone
	Building Envelope Boundary Profile Type
	2 metre wide easement
	3 metre wide easement
	Lot number
	Setback minimum required (if 0, a building can be constructed on the boundary provided that the building height and length requirements are met)

SOVEREIGN DRIVE

FRANKLIN ROAD



This Building Envelope Plan is to be read in conjunction with the associated Building Envelope Profiles and Design Guidelines.
The registered proprietor/s of the lot are required to build in accordance with building envelopes shown hereon and in the "Profile Diagrams" in sheet 5.

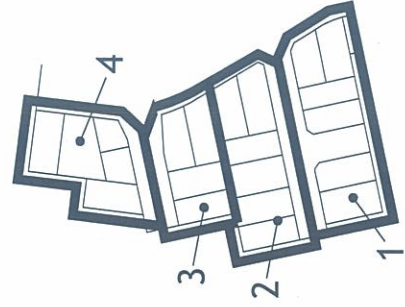


ARMSTRONG Mt DUNEED BUILDING ENVELOPE PLAN STAGE 7

7/3

stage sheet

Sheet 3 of 5
March 2014
Version: H



KEY TO SHEETS



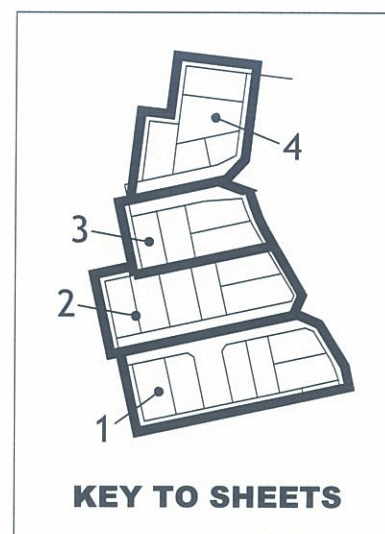
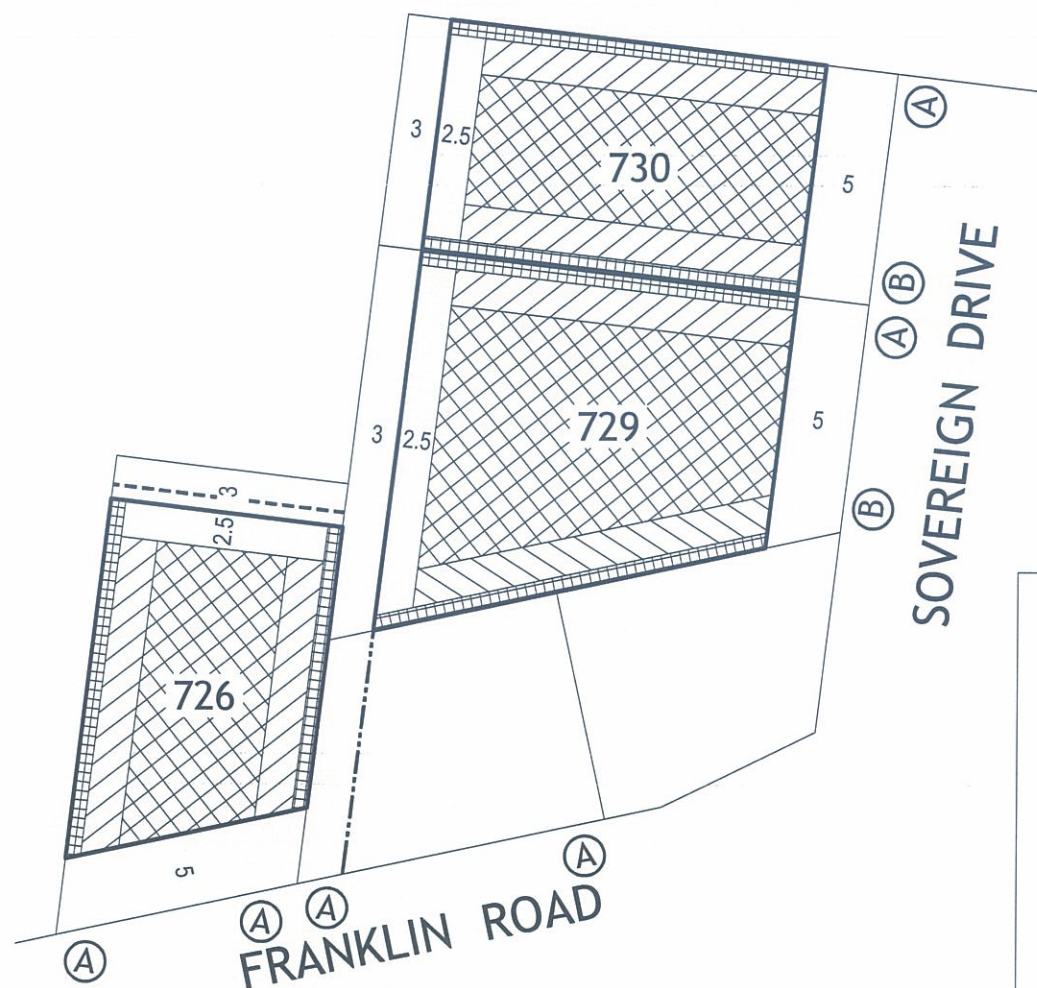
MGA ZONE 55

Detailed design of roads, driveways and footpaths is provided in the relevant Engineering Plans.
Detailed design of landscape works is provided in the relevant Landscape Plans.
All details subject to City of Greater Geelong Council approval.

Detailed design of roads, driveways and footpaths is provided in the relevant Engineering Plans.

Detailed design of landscape works is provided in the relevant Landscape Plans.

All details subject to City of Greater Geelong Council approval.



NOTATIONS

	Single Storey Building Envelope (height not exceeding 3.6m)
	Overlooking Zone - Habitable room windows/raised open spaces are a source of overlooking
	Non Overlooking Zone - Habitable room windows/raised open spaces are not a source of overlooking
	Building to Boundary Zone
	Building Envelope Boundary Profile Type
	2 metre wide easement
	3 metre wide easement
712	Lot number
3	Setback minimum required (if 0, a building can be constructed on the boundary provided that the building height and length requirements are met)

This Building Envelope Plan is to be read in conjunction with the associated Building Envelope Profiles and Design Guidelines.

The registered proprietor/s of the lot are required to build in accordance with building envelopes shown hereon and in the "Profile Diagrams" in sheet 6.



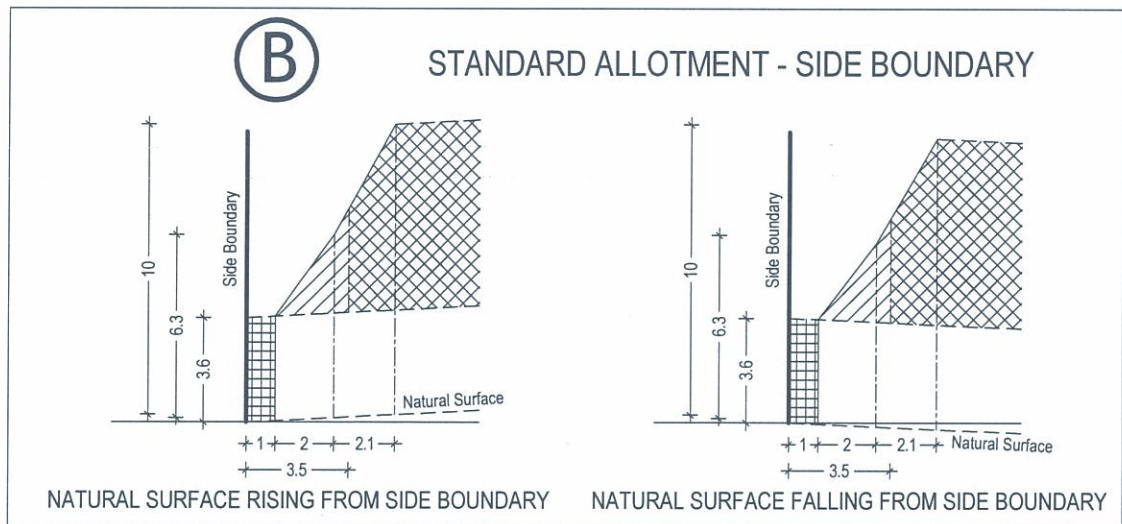
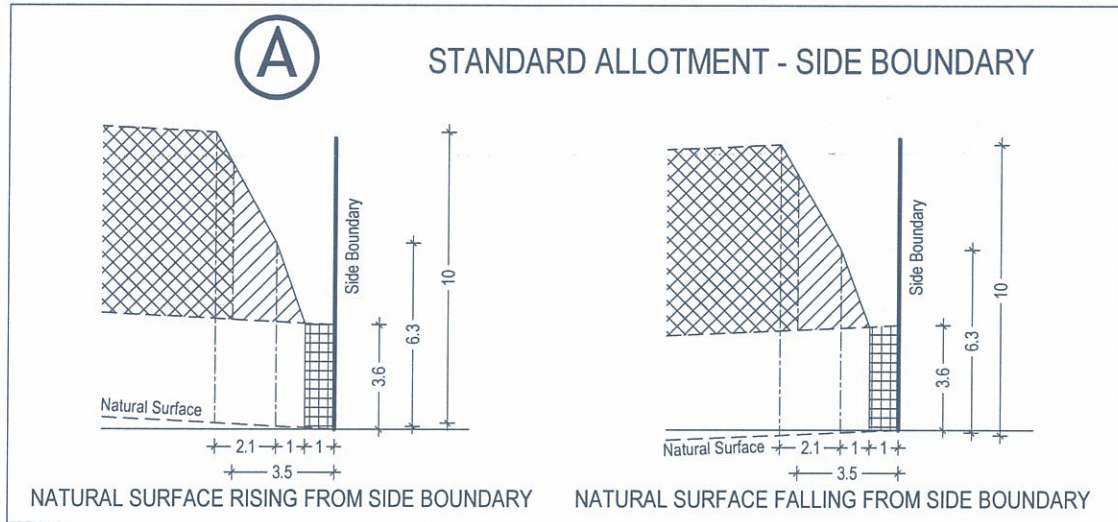
ARMSTRONG Mt DUNED

BUILDING ENVELOPE PLAN STAGE 7

7 / 4
stage sheet

Sheet 4 of 5


March 2014
Version:H



ARMSTRONG Mt DUNEED

BUILDING ENVELOPE PROFILES STAGE 7

 Single Storey Building Envelope

 Overlooking Zone
Habitable room windows/raised open spaces are a source of overlooking



Non Overlooking Zone
Habitable room windows/raised open spaces are not a source of overlooking



Building to Boundary Zone

7 / 5

stage sheet

Sheet 5 of 5

March 2014
Version: H