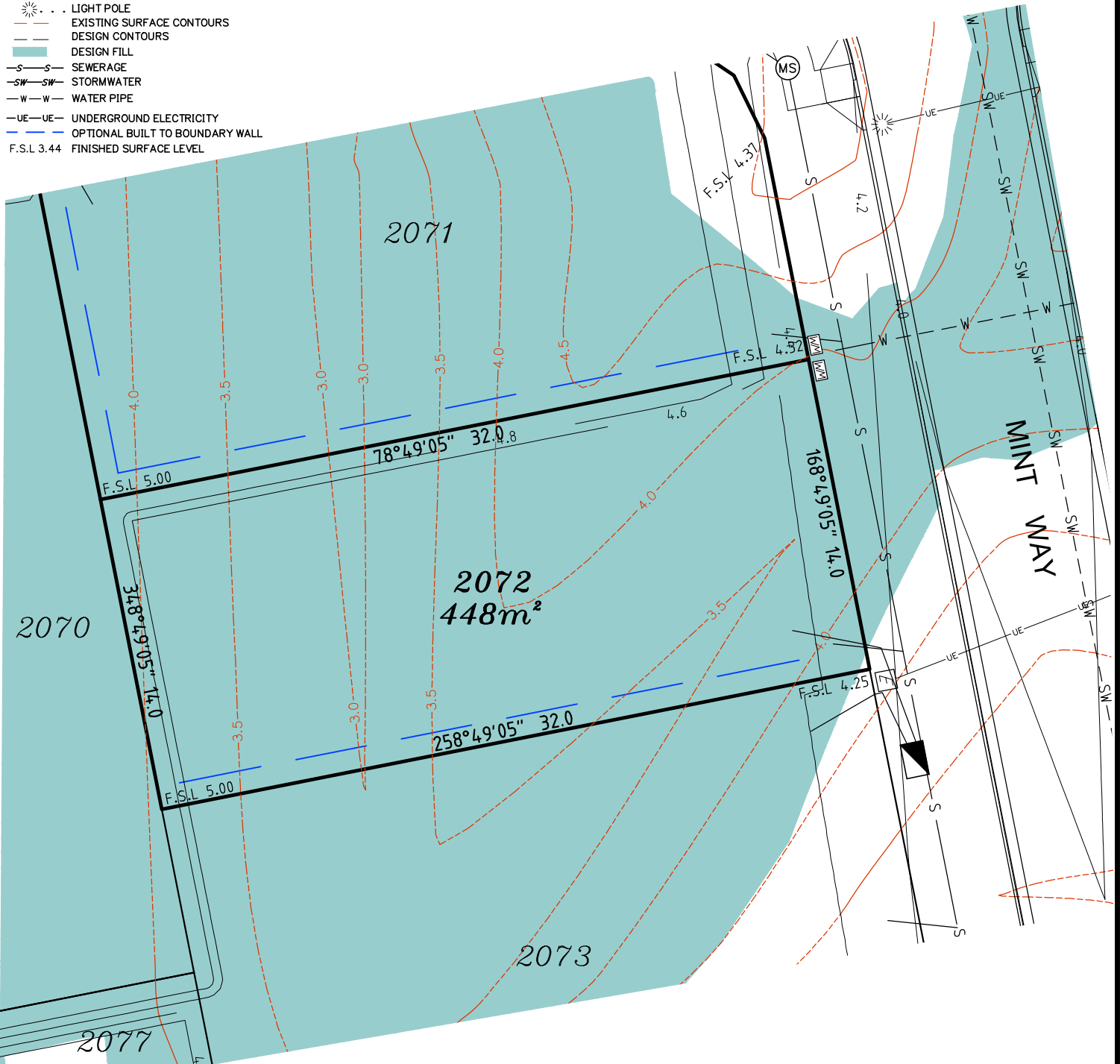


LEGEND

- ⊙ . . . SEWER MANHOLE
- ⊙ . . . SEWER MAINTENANCE SHAFT
- ⊙ . . . SEWER RISING MAIN
- ⊙ . . . STORMWATER MANHOLE
- ⊙ . . . GULLY TRAP
- ⊙ . . . WATER METER
- ⊙ . . . FIRE HYDRANT
- ⊙ . . . STOP VALVE
- ⊙ . . . ELECTRICITY PILLAR
- ⊙ . . . COMMS PIT
- ⊙ . . . LIGHT POLE
- — — EXISTING SURFACE CONTOURS
- — — DESIGN CONTOURS
- █ . . . DESIGN FILL
- S—S— SEWERAGE
- SW—SW— STORMWATER
- W—W— WATER PIPE
- UE—UE— UNDERGROUND ELECTRICITY
- — — OPTIONAL BUILT TO BOUNDARY WALL
- F.S.L 3.44 FINISHED SURFACE LEVEL

Notes:

- Final areas are subject to design changes, Council approval and field survey and may differ from those shown on this Disclosure Plan.
- Final presentation of areas will comply with requirements of the Registrar of Titles and may vary from the format on this Disclosure Plan
- "The Seller is entitled to make a Permitted Variation (as defined in Special Condition 3 of the contract) to the lot including its location, area, size, dimensions and elevation".
- Design contours are approximate only and may change during construction
- Services have been plotted from design information only and may change during construction
- All earthworks fill to lots has been placed and compacted on Level 1 basis in accordance with Australian Standard AS3798-2007 "Guidelines on earthworks for commercial and residential developments".



Scale 1:250 - Lengths are in Metres.



gassman
development
perspectives

est 1985

planning | environment | landscape | engineering | survey

T: 3807 3333 | F: 3287 5461 | www.gassman.com.au

Gold Coast & Logan | 76 Business Street, Yatala QLD | PO Box 392, Beenleigh 4207

Client	Helensvale Nominee Pty Ltd
Project	DISCLOSURE PLAN LOT 2072 (Survey plan: SP295981) THE SURROUNDS Country Club Drive Helensvale

Locality	HELENSVALE	Issue Date	24/08/2018
Local Govt	GOLD COAST CITY	Meridian	SP295981
Scale (on A4 original)	1:250	Level Datum	AHD
		Contour Interval	0.5m Existing 0.2m Design
		Drawn	NDB
		Date Drafted	03/08/2018
		Checked	JD

Real Property Description:
Lot 961 on SP280862

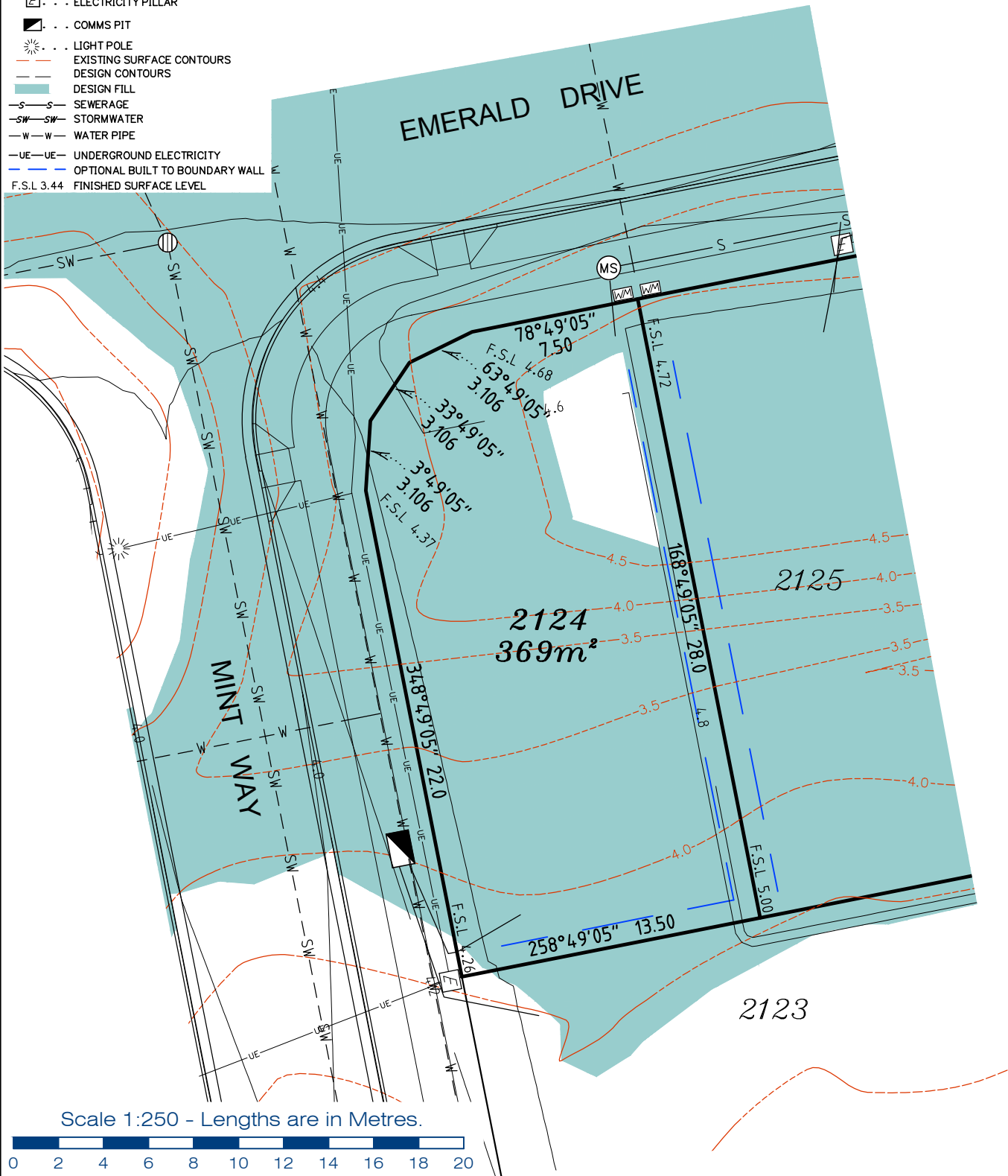
REFERENCE No. 5408-14-2E
PLAN No. 5408 S DC LOT 2072

LEGEND

- ⊙ . . . SEWER MANHOLE
- ⊙ . . . SEWER MAINTENANCE SHAFT
- ⊙ . . . SEWER RISING MAIN
- ⊙ . . . STORMWATER MANHOLE
- ⊙ . . . GULLY TRAP
- ⊙ . . . WATER METER
- ⊙ . . . FIRE HYDRANT
- ⊙ . . . STOP VALVE
- ⊙ . . . ELECTRICITY PILLAR
- ⊙ . . . COMMS PIT
- ⊙ . . . LIGHT POLE
- — — EXISTING SURFACE CONTOURS
- — — DESIGN CONTOURS
- █ . . . DESIGN FILL
- S—S— SEWERAGE
- SW—SW— STORMWATER
- W—W— WATER PIPE
- UE—UE— UNDERGROUND ELECTRICITY
- — — OPTIONAL BUILT TO BOUNDARY WALL
- F.S.L 3.44 FINISHED SURFACE LEVEL

Notes:

- Final areas are subject to design changes, Council approval and field survey and may differ from those shown on this Disclosure Plan.
- Final presentation of areas will comply with requirements of the Registrar of Titles and may vary from the format on this Disclosure Plan
- "The Seller is entitled to make a Permitted Variation (as defined in Special Condition 3 of the contract) to the lot including its location, area, size, dimensions and elevation".
- Design contours are approximate only and may change during construction
- Services have been plotted from design information only and may change during construction
- All earthworks fill to lots has been placed and compacted on Level 1 basis in accordance with Australian Standard AS3798-2007 "Guidelines on earthworks for commercial and residential developments".



Scale 1:250 - Lengths are in Metres.



T: 3807 3333 | F: 3287 5461 | www.gassman.com.au
 Gold Coast & Logan | 76 Business Street, Yatala QLD | PO Box 392, Beenleigh 4207

Client	Helensvale Nominee Pty Ltd
Project	DISCLOSURE PLAN LOT 1214 (Survey plan: SP295981) THE SURROUNDS Country Club Drive Helensvale

Locality	HELENSVALE	Issue Date	24/08/2018
Local Govt	GOLD COAST CITY	Meridian	SP295981
Scale (on A4 original)	1:250	Level Datum	AHD
		Contour Interval	0.5m Existing 0.2m Design
		Drawn	NDB
		Date Drafted	03/08/2018
		Checked	JD

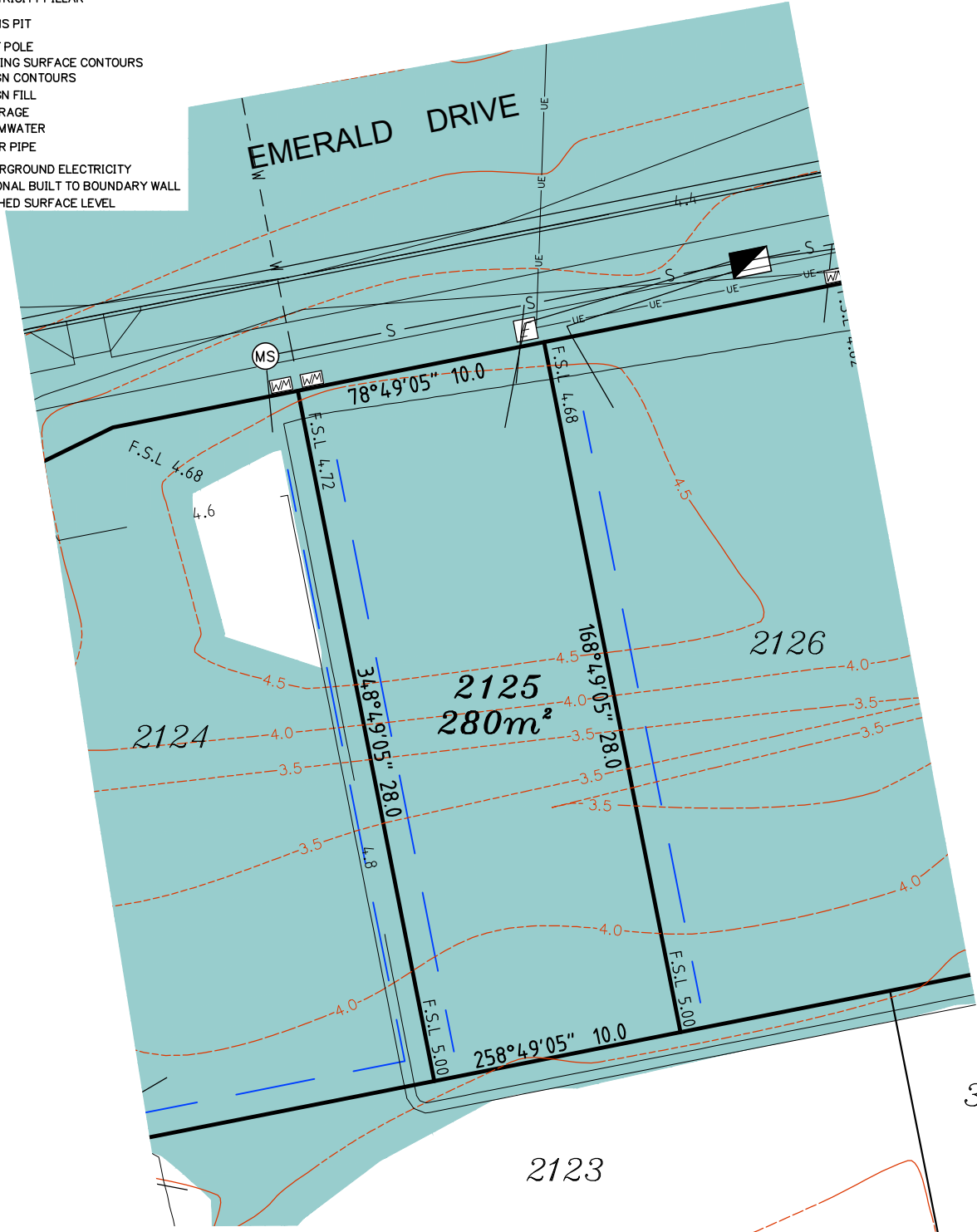
Real Property Description:
 Lot 961 on SP280862

REFERENCE No. 5408-14-2E
PLAN No. 5408 S DC LOT 1214

LEGEND

- ⊙ . . . SEWER MANHOLE
- ⊙-M . . . SEWER MAINTENANCE SHAFT
- ⊙-RM . . . SEWER RISING MAIN
- ⊙ . . . STORMWATER MANHOLE
- ⊙ . . . GULLY TRAP
- ⊙ . . . WATER METER
- ⊙ . . . FIRE HYDRANT
- ⊙ . . . STOP VALVE
- ⊙ . . . ELECTRICITY PILLAR
- ⊙ . . . COMMS PIT
- ⊙ . . . LIGHT POLE
- - - EXISTING SURFACE CONTOURS
- - - DESIGN CONTOURS
- █ . . . DESIGN FILL
- S-S- SEWERAGE
- SW-SW- STORMWATER
- W-W- WATER PIPE
- UE-UE- UNDERGROUND ELECTRICITY
- - - OPTIONAL BUILT TO BOUNDARY WALL
- F.S.L 3.44 FINISHED SURFACE LEVEL

- Notes:**
- Final areas are subject to design changes, Council approval and field survey and may differ from those shown on this Disclosure Plan.
 - Final presentation of areas will comply with requirements of the Registrar of Titles and may vary from the format on this Disclosure Plan
 - "The Seller is entitled to make a Permitted Variation (as defined in Special Condition 3 of the contract) to the lot including its location, area, size, dimensions and elevation".
 - Design contours are approximate only and may change during construction
 - Services have been plotted from design information only and may change during construction
 - All earthworks fill to lots has been placed and compacted on Level 1 basis in accordance with Australian Standard AS3798-2007 "Guidelines on earthworks for commercial and residential developments".



**gassman
development
perspectives**

planning | environment | landscape | engineering | survey

T: 3807 3333 | F: 3287 5461 | www.gassman.com.au

Gold Coast & Logan | 76 Business Street, Yatala QLD | PO Box 392, Beenleigh 4207

Client	Helensvale Nominee Pty Ltd
Project	DISCLOSURE PLAN LOT 2125 (Survey plan: SP295981) THE SURROUNDS Country Club Drive Helensvale

Locality	HELENSVALE	Issue Date	24/08/2018
Local Govt	GOLD COAST CITY	Meridian	SP295981
Scale (on A4 original)	1:250	Level Datum	AHD
		Contour Interval	0.5m Existing 0.2m Design
		Drawn	NDB
		Date Drafted	03/08/2018
		Checked	JD

Real Property Description:
Lot 961 on SP280862

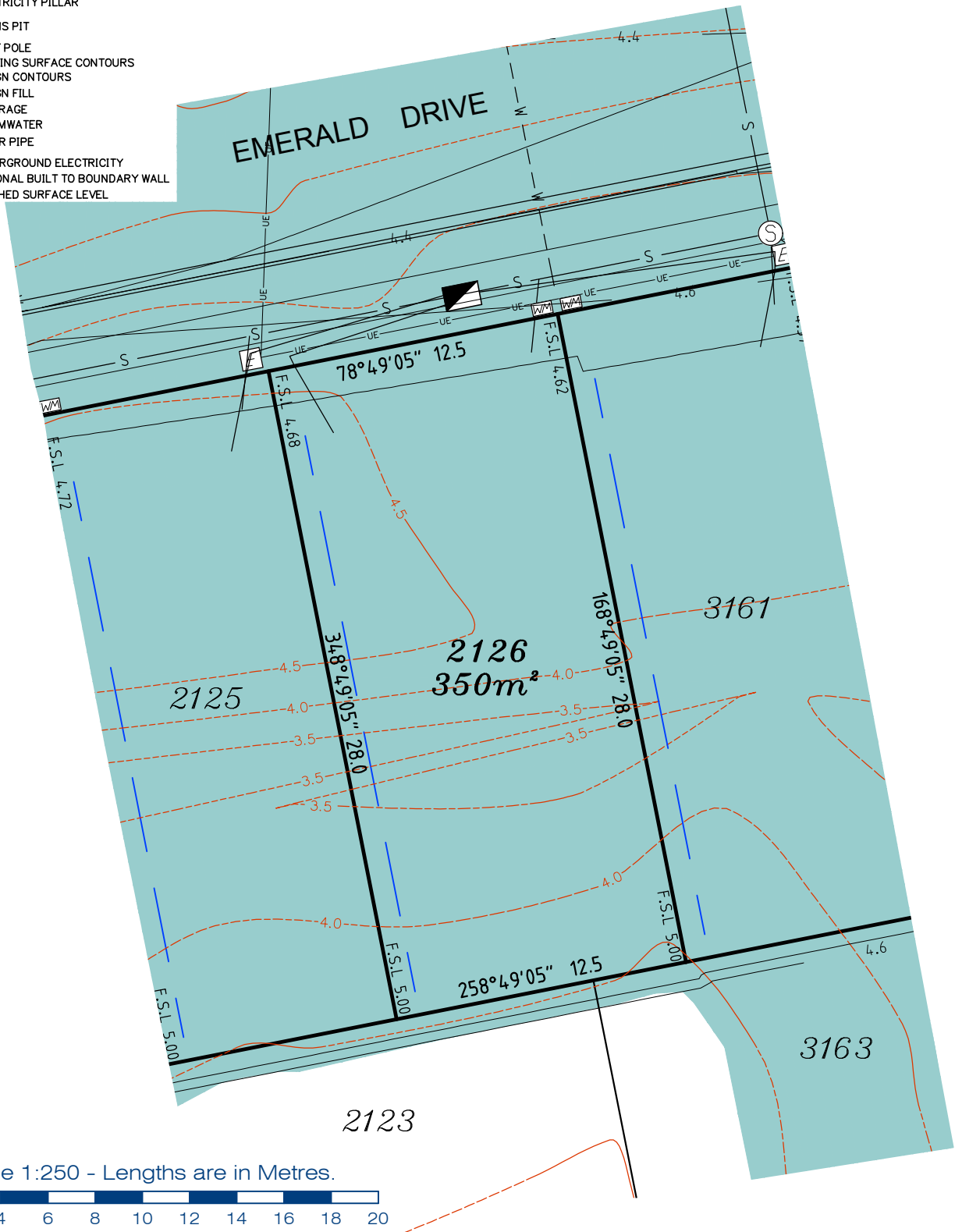
REFERENCE No. 5408-14-2E
PLAN No. 5408 S DC LOT 2125

LEGEND

- . . SEWER MANHOLE
- . . SEWER MAINTENANCE SHAFT
- . . SEWER RISING MAIN
- . . STORMWATER MANHOLE
- . . GULLY TRAP
- . . WATER METER
- . . FIRE HYDRANT
- . . STOP VALVE
- . . ELECTRICITY PILLAR
- . . COMMS PIT
- . . LIGHT POLE
- . . EXISTING SURFACE CONTOURS
- . . DESIGN CONTOURS
- . . DESIGN FILL
- . . SEWERAGE
- . . STORMWATER
- . . WATER PIPE
- . . UNDERGROUND ELECTRICITY
- . . OPTIONAL BUILT TO BOUNDARY WALL
- F.S.L 3.44 FINISHED SURFACE LEVEL

Notes:

- Final areas are subject to design changes, Council approval and field survey and may differ from those shown on this Disclosure Plan.
- Final presentation of areas will comply with requirements of the Registrar of Titles and may vary from the format on this Disclosure Plan
- "The Seller is entitled to make a Permitted Variation (as defined in Special Condition 3 of the contract) to the lot including its location, area, size, dimensions and elevation".
- Design contours are approximate only and may change during construction
- Services have been plotted from design information only and may change during construction
- All earthworks fill to lots has been placed and compacted on Level 1 basis in accordance with Australian Standard AS3798-2007 "Guidelines on earthworks for commercial and residential developments".



**gassman
development
perspectives**

estd 1985

planning | environment | landscape | engineering | survey

T: 3807 3333 | F: 3287 5461 | www.gassman.com.au

Gold Coast & Logan | 176 Business Street, Yatala QLD | PO Box 392, Beenleigh 4207

Client	Helensvale Nominee Pty Ltd
Project	DISCLOSURE PLAN LOT 2126 (Survey plan: SP295981) THE SURROUNDS Country Club Drive Helensvale

Locality	HELENSVALE
Local Govt	GOLD COAST CITY
Scale (on A4 original)	1:250

Issue Date	24/08/2018
Meridian	SP295981
Level Datum	AHD
Contour Interval	0.5m Existing 0.2m Design
Drawn	NDB
Date Drafted	03/08/2018
Checked	JD

Real Property Description:
Lot 961 on SP280862

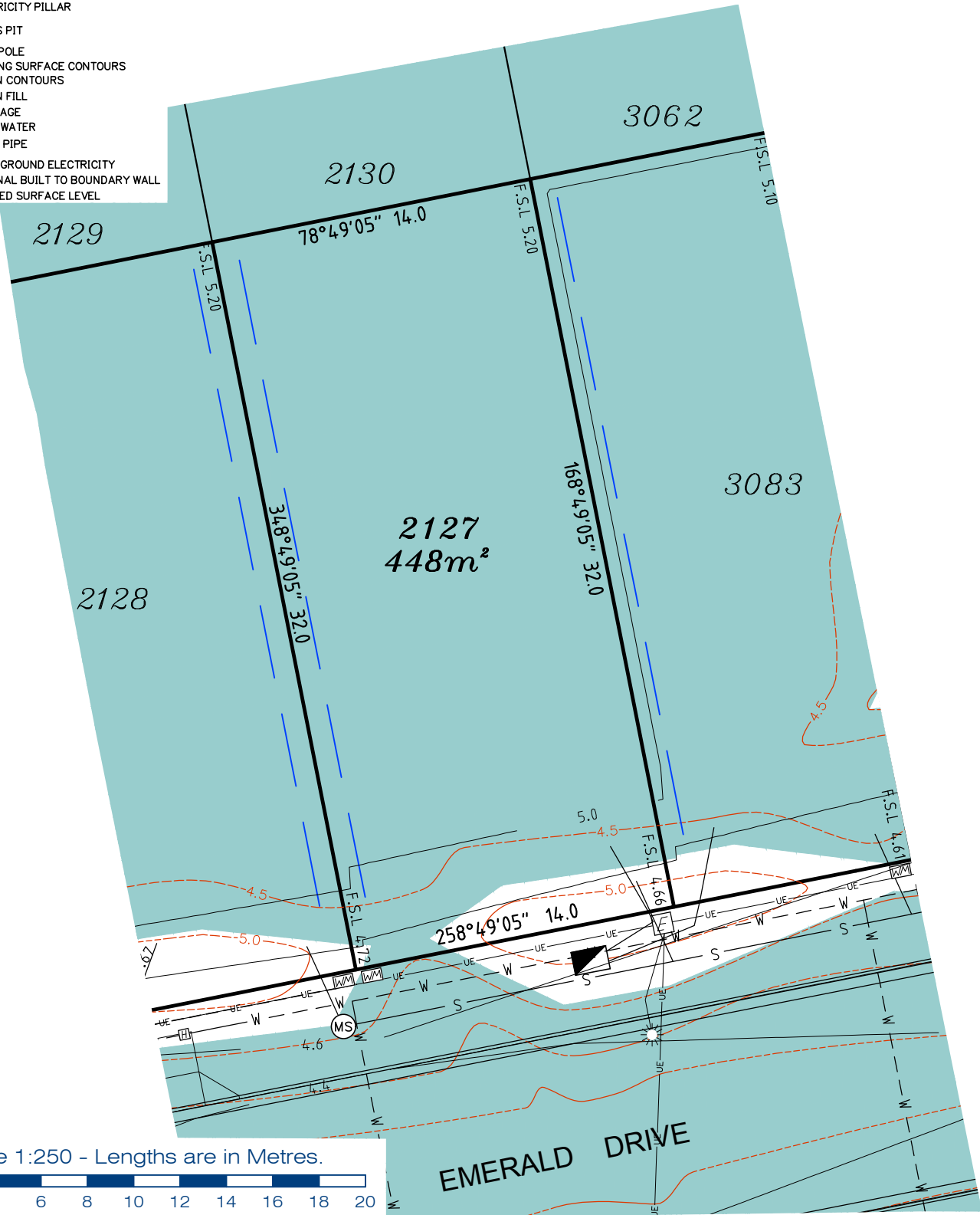
REFERENCE No. 5408-14-2E
PLAN No. 5408 S DC LOT 2126

LEGEND

- ⊙ . . . SEWER MANHOLE
- ⊙-RM . . . SEWER MAINTENANCE SHAFT
- ⊙-RM . . . SEWER RISING MAIN
- ⊙ . . . STORMWATER MANHOLE
- ⊙ . . . GULLY TRAP
- ⊙ . . . WATER METER
- ⊙ . . . FIRE HYDRANT
- ⊙ . . . STOP VALVE
- ⊙ . . . ELECTRICITY PILLAR
- ⊙ . . . COMMS PIT
- ⊙ . . . LIGHT POLE
- - - EXISTING SURFACE CONTOURS
- - - DESIGN CONTOURS
- █ . . . DESIGN FILL
- S-S- SEWERAGE
- SW-SW- STORMWATER
- W-W- WATER PIPE
- UE-UE- UNDERGROUND ELECTRICITY
- - - OPTIONAL BUILT TO BOUNDARY WALL
- F.S.L 3.44 FINISHED SURFACE LEVEL

Notes:

- Final areas are subject to design changes, Council approval and field survey and may differ from those shown on this Disclosure Plan.
- Final presentation of areas will comply with requirements of the Registrar of Titles and may vary from the format on this Disclosure Plan
- "The Seller is entitled to make a Permitted Variation (as defined in Special Condition 3 of the contract) to the lot including its location, area, size, dimensions and elevation".
- Design contours are approximate only and may change during construction
- Services have been plotted from design information only and may change during construction
- All earthworks fill to lots has been placed and compacted on Level 1 basis in accordance with Australian Standard AS3798-2007 "Guidelines on earthworks for commercial and residential developments".



**gassman
development
perspectives**

estd 1985

planning | environment | landscape | engineering | survey

T: 3807 3333 | F: 3287 5461 | www.gassman.com.au

Gold Coast & Logan | 176 Business Street, Yatala QLD | PO Box 392, Beenleigh 4207

Client
Helensvale Nominee Pty Ltd

Project
DISCLOSURE PLAN
LOT 2127
(Survey plan: SP295981)
THE SURROUNDS
Country Club Drive Helensvale

Locality HELENSVALE
Local Govt GOLD COAST CITY
Scale (on A4 original) 1:250

Issue Date 24/08/2018
Meridian SP295981
Level Datum AHD
Contour Interval 0.5m Existing
0.2m Design
Drawn NDB
Date Drafted 03/08/2018
Checked JD

Real Property Description:
Lot 961 on SP280862

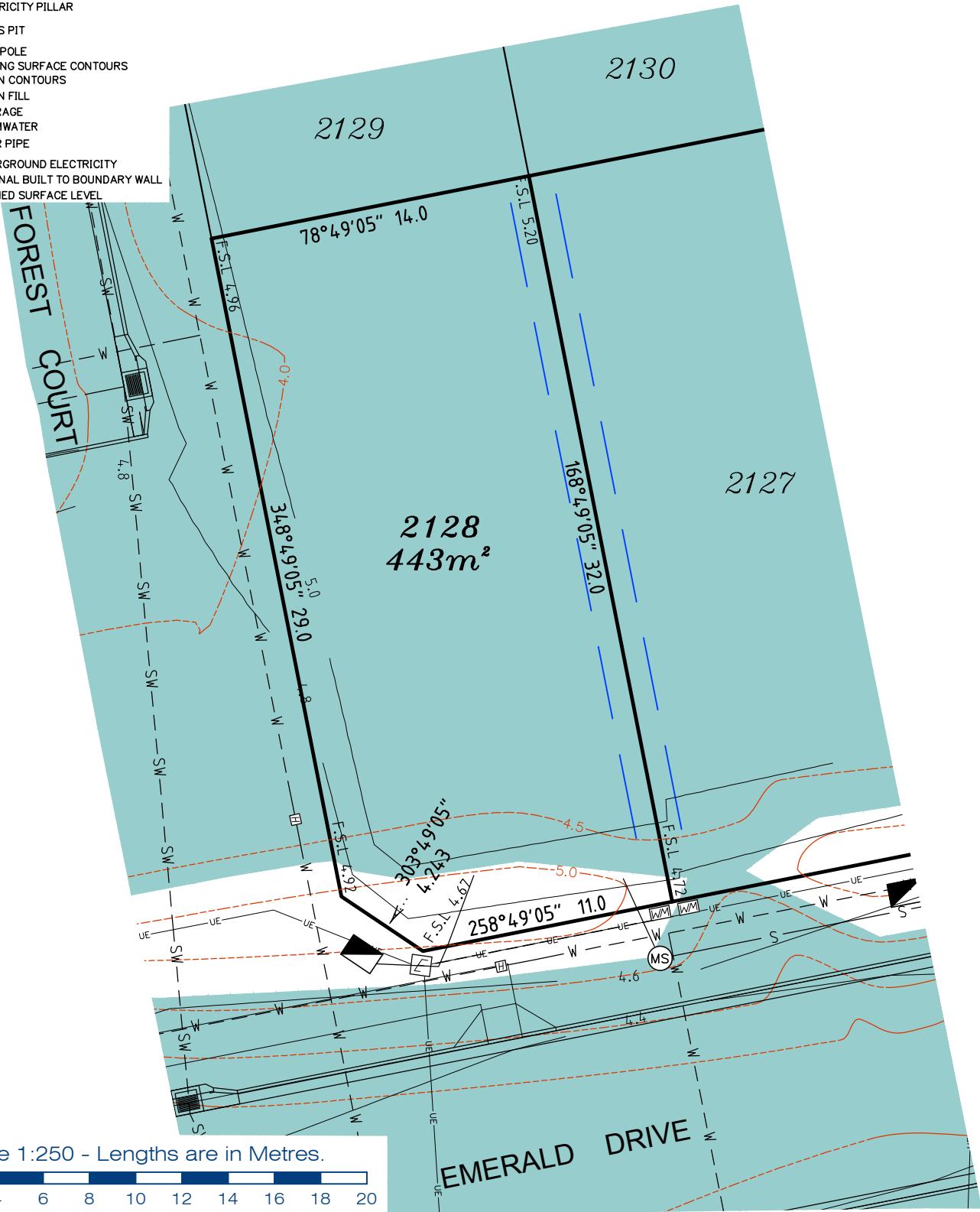
REFERENCE No. 5408-14-2E
PLAN No. 5408 S DC LOT 2127

LEGEND

- . . . SEWER MANHOLE
- . . . SEWER MAINTENANCE SHAFT
- . . . SEWER RISING MAIN
- . . . STORMWATER MANHOLE
- . . . GULLY TRAP
- . . . WATER METER
- . . . FIRE HYDRANT
- . . . STOP VALVE
- . . . ELECTRICITY PILLAR
- . . . COMMS PIT
- . . . LIGHT POLE
- . . . EXISTING SURFACE CONTOURS
- . . . DESIGN CONTOURS
- . . . DESIGN FILL
- . . . SEWERAGE
- . . . STORMWATER
- . . . WATER PIPE
- . . . UNDERGROUND ELECTRICITY
- . . . OPTIONAL BUILT TO BOUNDARY WALL
- F.S.L 3.44 FINISHED SURFACE LEVEL

Notes:

- Final areas are subject to design changes, Council approval and field survey and may differ from those shown on this Disclosure Plan.
- Final presentation of areas will comply with requirements of the Registrar of Titles and may vary from the format on this Disclosure Plan
- "The Seller is entitled to make a Permitted Variation (as defined in Special Condition 3 of the contract) to the lot including its location, area, size, dimensions and elevation".
- Design contours are approximate only and may change during construction
- Services have been plotted from design information only and may change during construction
- All earthworks fill to lots has been placed and compacted on Level 1 basis in accordance with Australian Standard AS3798-2007 "Guidelines on earthworks for commercial and residential developments".



Scale 1:250 - Lengths are in Metres.



**gassman
development
perspectives**

planning | environment | landscape | engineering | survey
 T: 3807 3333 | F: 3287 5461 | www.gassman.com.au
 Gold Coast & Logan | 76 Business Street, Yatala QLD | PO Box 392, Beenleigh 4207

Client
 Helensvale Nominee Pty Ltd

Project
DISCLOSURE PLAN
LOT 2128
 (Survey plan: SP295981)
THE SURROUNDS
Country Club Drive Helensvale

Locality HELENSVALE
 Local Govt GOLD COAST CITY
 Scale (on A4 original) 1:250

Issue Date 24/08/2018
 Meridian SP295981
 Level Datum AHD
 Contour Interval 0.5m Existing
 0.2m Design
 Drawn NDB
 Date Drafted 03/08/2018
 Checked JD

Real Property Description:
 Lot 961 on SP280862

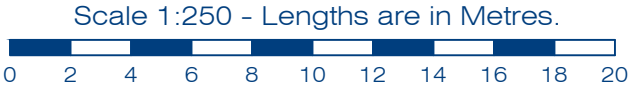
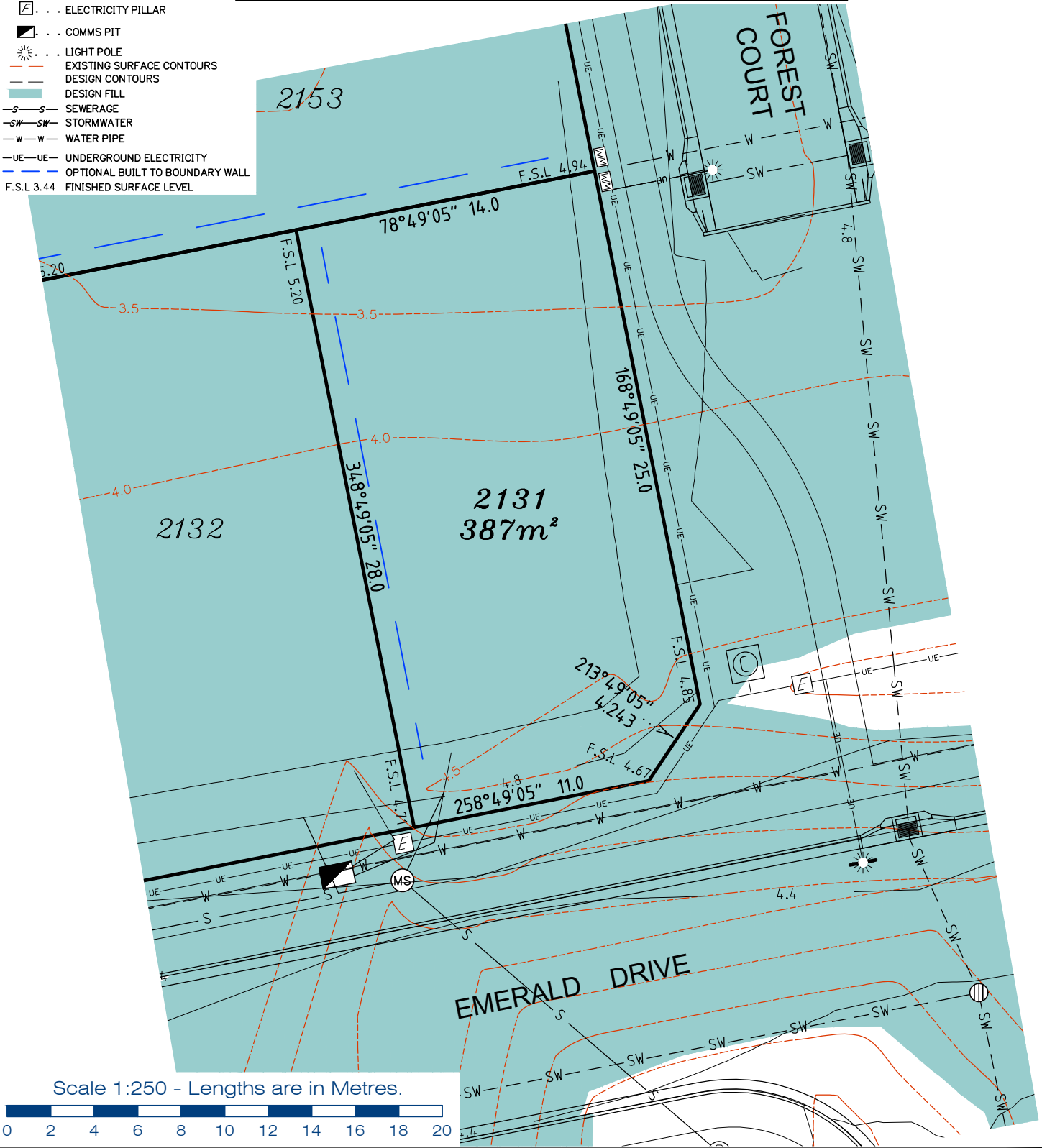
REFERENCE No. 5408-14-2E
PLAN No. 5408 S DC LOT 2128

LEGEND

- ⊙ . . . SEWER MANHOLE
- ⊕ . . . SEWER MAINTENANCE SHAFT
- ⊕-RM . . . SEWER RISING MAIN
- ⊕ . . . STORMWATER MANHOLE
- ⊕ . . . GULLY TRAP
- ⊕ . . . WATER METER
- ⊕ . . . FIRE HYDRANT
- ⊕ . . . STOP VALVE
- ⊕ . . . ELECTRICITY PILLAR
- ⊕ . . . COMMS PIT
- ⊕ . . . LIGHT POLE
- - - EXISTING SURFACE CONTOURS
- - - DESIGN CONTOURS
- - - DESIGN FILL
- S-S- SEWERAGE
- SW-SW- STORMWATER
- W-W- WATER PIPE
- UE-UE- UNDERGROUND ELECTRICITY
- - - OPTIONAL BUILT TO BOUNDARY WALL
- F.S.L 3.44 FINISHED SURFACE LEVEL

Notes:

- Final areas are subject to design changes, Council approval and field survey and may differ from those shown on this Disclosure Plan.
- Final presentation of areas will comply with requirements of the Registrar of Titles and may vary from the format on this Disclosure Plan
- "The Seller is entitled to make a Permitted Variation (as defined in Special Condition 3 of the contract) to the lot including its location, area, size, dimensions and elevation".
- Design contours are approximate only and may change during construction
- Services have been plotted from design information only and may change during construction
- All earthworks fill to lots has been placed and compacted on Level 1 basis in accordance with Australian Standard AS3798-2007 "Guidelines on earthworks for commercial and residential developments".



gassman development perspectives
 est 1985
 planning | environment | landscape | engineering | survey
 T: 3807 3333 | F: 3287 5461 | www.gassman.com.au
 Gold Coast & Logan | 76 Business Street, Yatala QLD | PO Box 392, Beenleigh 4207

Client	Helensvale Nominee Pty Ltd
Project	DISCLOSURE PLAN LOT 2131 (Survey plan: SP295981) THE SURROUNDS Country Club Drive Helensvale

Locality	HELENSVALE	Issue Date	24/08/2018
Local Govt	GOLD COAST CITY	Meridian	SP295981
Scale (on A4 original)	1:250	Level Datum	AHD
		Contour Interval	0.5m Existing 0.2m Design
		Drawn	NDB
		Date Drafted	03/08/2018
		Checked	JD

Real Property Description:
 Lot 961 on SP280862

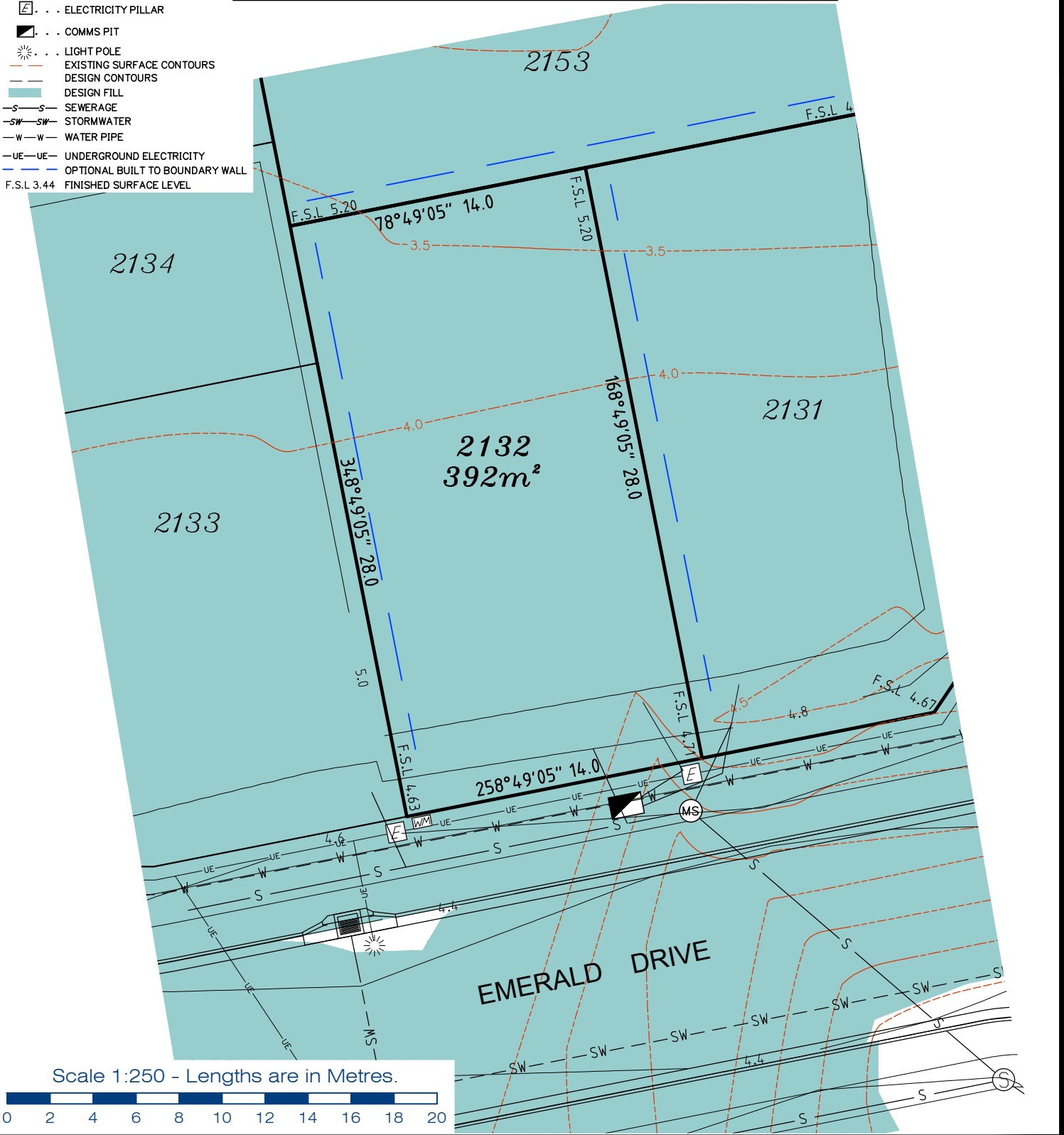
REFERENCE No. 5408-14-2E
PLAN No. 5408 S DC LOT 2131

LEGEND

- ⊙ . . . SEWER MANHOLE
- ⊙ . . . SEWER MAINTENANCE SHAFT
- ⊙ . . . SEWER RISING MAIN
- ⊙ . . . STORMWATER MANHOLE
- ⊙ . . . GULLY TRAP
- ⊙ . . . WATER METER
- ⊙ . . . FIRE HYDRANT
- ⊙ . . . STOP VALVE
- ⊙ . . . ELECTRICITY PILLAR
- ⊙ . . . COMMS PIT
- ⊙ . . . LIGHT POLE
- EXISTING SURFACE CONTOURS
- DESIGN CONTOURS
- DESIGN FILL
- SEWERAGE
- SW--- STORMWATER
- W--- WATER PIPE
- UE--- UNDERGROUND ELECTRICITY
- OPTIONAL BUILT TO BOUNDARY WALL
- F.S.L 3.44 FINISHED SURFACE LEVEL

Notes:

- Final areas are subject to design changes, Council approval and field survey and may differ from those shown on this Disclosure Plan.
- Final presentation of areas will comply with requirements of the Registrar of Titles and may vary from the format on this Disclosure Plan
- "The Seller is entitled to make a Permitted Variation (as defined in Special Condition 3 of the contract) to the lot including its location, area, size, dimensions and elevation".
- Design contours are approximate only and may change during construction
- Services have been plotted from design information only and may change during construction
- All earthworks fill to lots has been placed and compacted on Level 1 basis in accordance with Australian Standard AS3798-2007 "Guidelines on earthworks for commercial and residential developments".



**gassman
development
perspectives**

estd 1985

planning | environment | landscape | engineering | survey

T: 3807 3333 | F: 3287 5461 | www.gassman.com.au

Gold Coast & Logan | 76 Business Street, Yatala QLD | PO Box 392, Beenleigh 4207

Client	Helensvale Nominee Pty Ltd
Project	DISCLOSURE PLAN LOT 2132 (Survey plan: SP295981) THE SURROUNDS Country Club Drive Helensvale
Real Property Description:	Lot 961 on SP280862

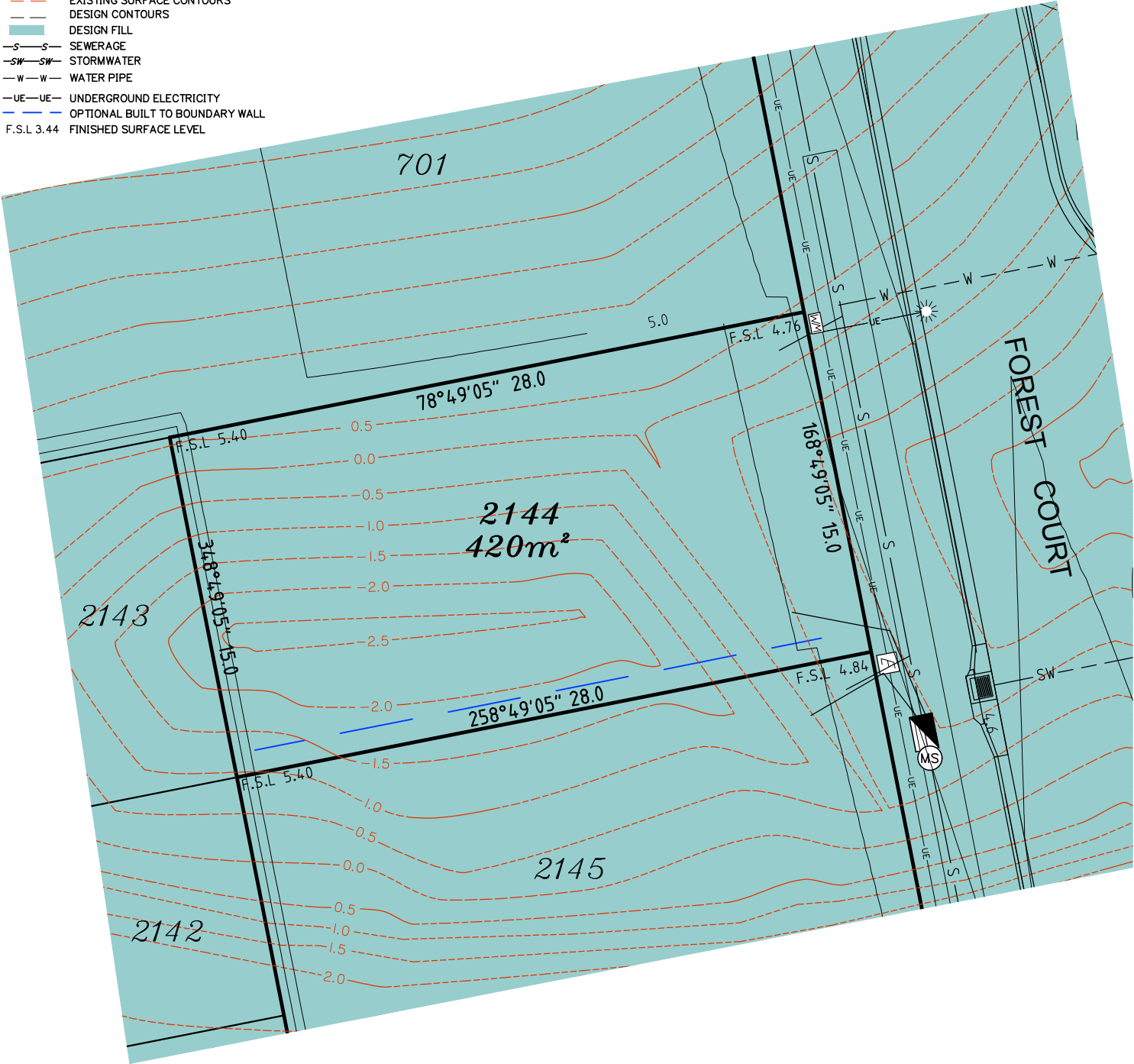
Locality	HELENSVALE	Issue Date	24/08/2018
Local Govt	GOLD COAST CITY	Meridian	SP295981
Scale (on A4 original)	1:250	Level Datum	AHD
		Contour Interval	0.5m Existing 0.2m Design
		Drawn	NDB
		Date Drafted	03/08/2018
		Checked	JD
REFERENCE No.	5408-14-2E		
PLAN No.	5408 S DC LOT 2132		

LEGEND

- ⊙ . . . SEWER MANHOLE
- ⊙-RM . . . SEWER MAINTENANCE SHAFT
- ⊙-RM . . . SEWER RISING MAIN
- ⊙ . . . STORMWATER MANHOLE
- ⊙ . . . GULLY TRAP
- ⊙ . . . WATER METER
- ⊙ . . . FIRE HYDRANT
- ⊙ . . . STOP VALVE
- ⊙ . . . ELECTRICITY PILLAR
- ⊙ . . . COMMS PIT
- ⊙ . . . LIGHT POLE
- - - EXISTING SURFACE CONTOURS
- - - DESIGN CONTOURS
- █ . . . DESIGN FILL
- S-S- SEWERAGE
- SW-SW- STORMWATER
- W-W- WATER PIPE
- UE-UE- UNDERGROUND ELECTRICITY
- - - OPTIONAL BUILT TO BOUNDARY WALL
- F.S.L 3.44 FINISHED SURFACE LEVEL

Notes:

- Final areas are subject to design changes, Council approval and field survey and may differ from those shown on this Disclosure Plan.
- Final presentation of areas will comply with requirements of the Registrar of Titles and may vary from the format on this Disclosure Plan
- "The Seller is entitled to make a Permitted Variation (as defined in Special Condition 3 of the contract) to the lot including its location, area, size, dimensions and elevation".
- Design contours are approximate only and may change during construction
- Services have been plotted from design information only and may change during construction
- All earthworks fill to lots has been placed and compacted on Level 1 basis in accordance with Australian Standard AS3798-2007 "Guidelines on earthworks for commercial and residential developments".



**gassman
development
perspectives**

est 1985

planning | environment | landscape | engineering | survey

T: 3807 3333 | F: 3287 5461 | www.gassman.com.au

Gold Coast & Logan | 176 Business Street, Yatala QLD | PO Box 392, Beenleigh 4207

Client	Helensvale Nominee Pty Ltd
Project	DISCLOSURE PLAN LOT 2144 (Survey plan: SP295981) THE SURROUNDS Country Club Drive Helensvale

Locality	HELENSVALE	Issue Date	24/08/2018
Local Govt	GOLD COAST CITY	Meridian	SP295981
Scale (on A4 original)	1:250	Level Datum	AHD
		Contour Interval	0.5m Existing 0.2m Design
		Drawn	NDB
		Date Drafted	03/08/2018
		Checked	JD

Real Property Description:
Lot 961 on SP280862

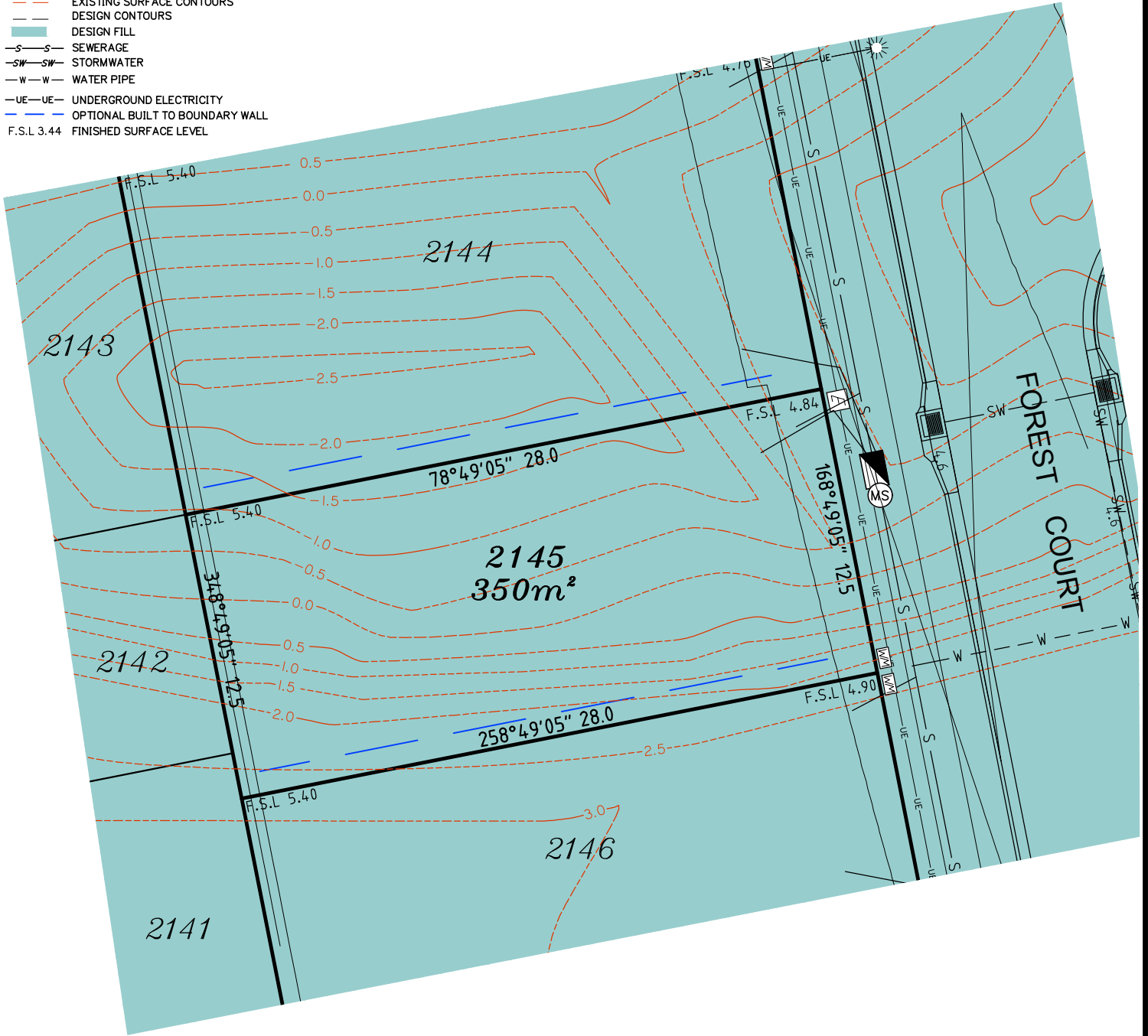
REFERENCE No. 5408-14-2E
PLAN No. 5408 S DC LOT 2144

LEGEND

- ⊙ . . . SEWER MANHOLE
- ⊕ . . . SEWER MAINTENANCE SHAFT
- ⊕ . . . SEWER RISING MAIN
- ⊕ . . . STORMWATER MANHOLE
- ⊕ . . . GULLY TRAP
- ⊕ . . . WATER METER
- ⊕ . . . FIRE HYDRANT
- ⊕ . . . STOP VALVE
- ⊕ . . . ELECTRICITY PILLAR
- ⊕ . . . COMMS PIT
- ⊕ . . . LIGHT POLE
- - - EXISTING SURFACE CONTOURS
- - - DESIGN CONTOURS
- █ . . . DESIGN FILL
- S-S- SEWERAGE
- SW-SW- STORMWATER
- W-W- WATER PIPE
- UE-UE- UNDERGROUND ELECTRICITY
- - - OPTIONAL BUILT TO BOUNDARY WALL
- F.S.L 3.44 FINISHED SURFACE LEVEL

Notes:

- Final areas are subject to design changes, Council approval and field survey and may differ from those shown on this Disclosure Plan.
- Final presentation of areas will comply with requirements of the Registrar of Titles and may vary from the format on this Disclosure Plan
- "The Seller is entitled to make a Permitted Variation (as defined in Special Condition 3 of the contract) to the lot including its location, area, size, dimensions and elevation".
- Design contours are approximate only and may change during construction
- Services have been plotted from design information only and may change during construction
- All earthworks fill to lots has been placed and compacted on Level 1 basis in accordance with Australian Standard AS3798-2007 "Guidelines on earthworks for commercial and residential developments".



**gassman
development
perspectives**

planning | environment | landscape | engineering | survey

T: 3807 3333 | F: 3287 5461 | www.gassman.com.au

Gold Coast & Logan | 176 Business Street, Yatala QLD | PO Box 392, Beenleigh 4207

Client	Helensvale Nominee Pty Ltd
Project	DISCLOSURE PLAN LOT 2145 (Survey plan: SP295981) THE SURROUNDS Country Club Drive Helensvale

Locality	HELENSVALE	Issue Date	24/08/2018
Local Govt	GOLD COAST CITY	Meridian	SP295981
Scale (on A4 original)	1:250	Level Datum	AHD
		Contour Interval	0.5m Existing 0.2m Design
		Drawn	NDB
		Date Drafted	03/08/2018
		Checked	JD

Real Property Description:
Lot 961 on SP280862

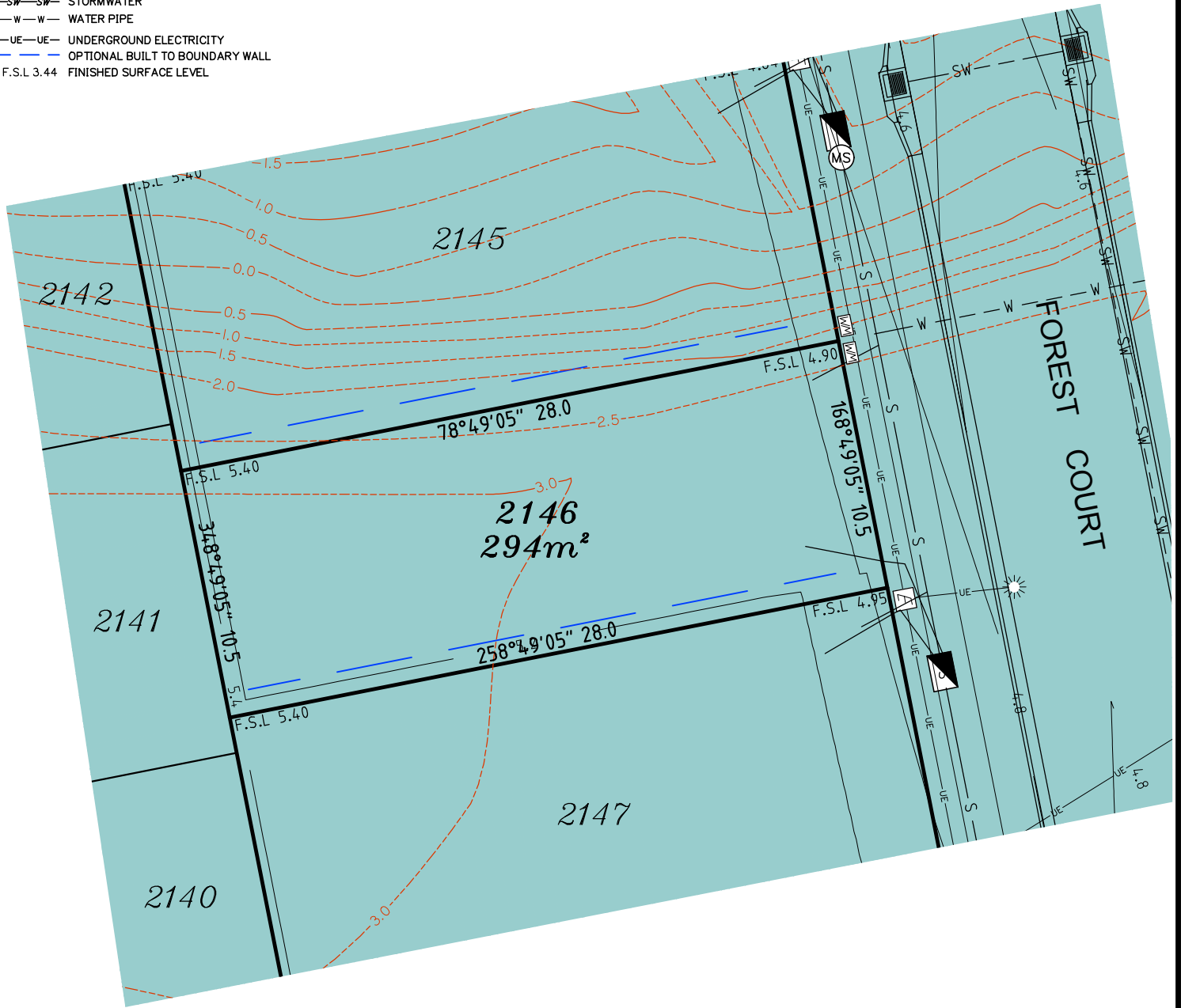
REFERENCE No. 5408-14-2E
PLAN No. 5408 S DC LOT 2145

LEGEND

- ⊙ . . . SEWER MANHOLE
- ⊙-M . . . SEWER MAINTENANCE SHAFT
- ⊙-RM . . . SEWER RISING MAIN
- ⊙ . . . STORMWATER MANHOLE
- ⊙ . . . GULLY TRAP
- ⊙ . . . WATER METER
- ⊙ . . . FIRE HYDRANT
- ⊙ . . . STOP VALVE
- ⊙ . . . ELECTRICITY PILLAR
- ⊙ . . . COMMS PIT
- ⊙ . . . LIGHT POLE
- - - EXISTING SURFACE CONTOURS
- - - DESIGN CONTOURS
- █ . . . DESIGN FILL
- S-S- SEWERAGE
- SW-SW- STORMWATER
- W-W- WATER PIPE
- UE-UE- UNDERGROUND ELECTRICITY
- - - OPTIONAL BUILT TO BOUNDARY WALL
- F.S.L 3.44 FINISHED SURFACE LEVEL

Notes:

- Final areas are subject to design changes, Council approval and field survey and may differ from those shown on this Disclosure Plan.
- Final presentation of areas will comply with requirements of the Registrar of Titles and may vary from the format on this Disclosure Plan
- "The Seller is entitled to make a Permitted Variation (as defined in Special Condition 3 of the contract) to the lot including its location, area, size, dimensions and elevation".
- Design contours are approximate only and may change during construction
- Services have been plotted from design information only and may change during construction
- All earthworks fill to lots has been placed and compacted on Level 1 basis in accordance with Australian Standard AS3798-2007 "Guidelines on earthworks for commercial and residential developments".



Scale 1:250 - Lengths are in Metres.



T: 3807 3333 | F: 3287 5461 | www.gassman.com.au
 Gold Coast & Logan | 176 Business Street, Yatala QLD | PO Box 392, Beenleigh 4207

Client
 Helensvale Nominee Pty Ltd

Project
DISCLOSURE PLAN
LOT 2146
 (Survey plan: SP295981)
THE SURROUNDS
Country Club Drive Helensvale

Locality HELENSVALE
 Local Govt GOLD COAST CITY
 Scale (on A4 original) 1:250

Issue Date 24/08/2018
 Meridian SP295981
 Level Datum AHD
 Contour Interval 0.5m Existing
 0.2m Design
 Drawn NDB
 Date Drafted 03/08/2018
 Checked JD

Real Property Description:
 Lot 961 on SP280862

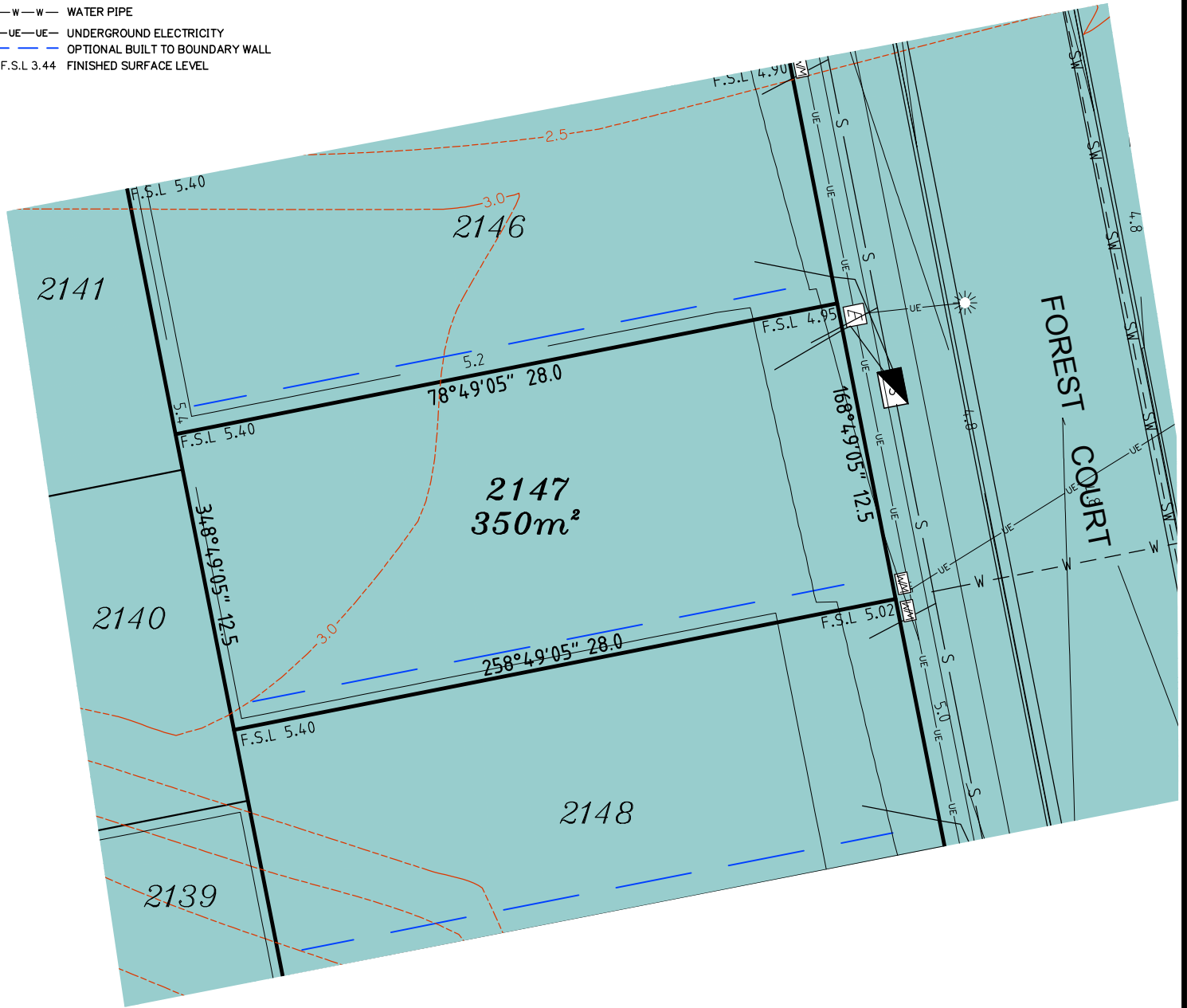
REFERENCE No. 5408-14-2E
PLAN No. 5408 S DC LOT 2146

LEGEND

- ⊙ . . . SEWER MANHOLE
- ⊙-RM . . . SEWER MAINTENANCE SHAFT
- ⊙-RM . . . SEWER RISING MAIN
- ⊙ . . . STORMWATER MANHOLE
- ⊙ . . . GULLY TRAP
- ⊙ . . . WATER METER
- ⊙ . . . FIRE HYDRANT
- ⊙ . . . STOP VALVE
- ⊙ . . . ELECTRICITY PILLAR
- ⊙ . . . COMMS PIT
- ⊙ . . . LIGHT POLE
- - - EXISTING SURFACE CONTOURS
- - - DESIGN CONTOURS
- █ . . . DESIGN FILL
- S-S- SEWERAGE
- SW-SW- STORMWATER
- W-W- WATER PIPE
- UE-UE- UNDERGROUND ELECTRICITY
- - - OPTIONAL BUILT TO BOUNDARY WALL
- F.S.L 3.44 FINISHED SURFACE LEVEL

Notes:

- Final areas are subject to design changes, Council approval and field survey and may differ from those shown on this Disclosure Plan.
- Final presentation of areas will comply with requirements of the Registrar of Titles and may vary from the format on this Disclosure Plan
- "The Seller is entitled to make a Permitted Variation (as defined in Special Condition 3 of the contract) to the lot including its location, area, size, dimensions and elevation".
- Design contours are approximate only and may change during construction
- Services have been plotted from design information only and may change during construction
- All earthworks fill to lots has been placed and compacted on Level 1 basis in accordance with Australian Standard AS3798-2007 "Guidelines on earthworks for commercial and residential developments".



Scale 1:250 - Lengths are in Metres.



T: 3807 3333 | F: 3287 5461 | www.gassman.com.au
 Gold Coast & Logan | 76 Business Street, Yatala QLD | PO Box 392, Beenleigh 4207

Client
 Helensvale Nominee Pty Ltd

Project
DISCLOSURE PLAN
LOT 2147
 (Survey plan: SP295981)
THE SURROUNDS
Country Club Drive Helensvale

Locality HELENSVALE
 Local Govt GOLD COAST CITY
 Scale (on A4 original) 1:250

Issue Date 24/08/2018
 Meridian SP295981
 Level Datum AHD
 Contour Interval 0.5m Existing
 0.2m Design
 Drawn NDB
 Date Drafted 03/08/2018
 Checked JD

Real Property Description:
 Lot 961 on SP280862

REFERENCE No. 5408-14-2E
PLAN No. 5408 S DC LOT 2147

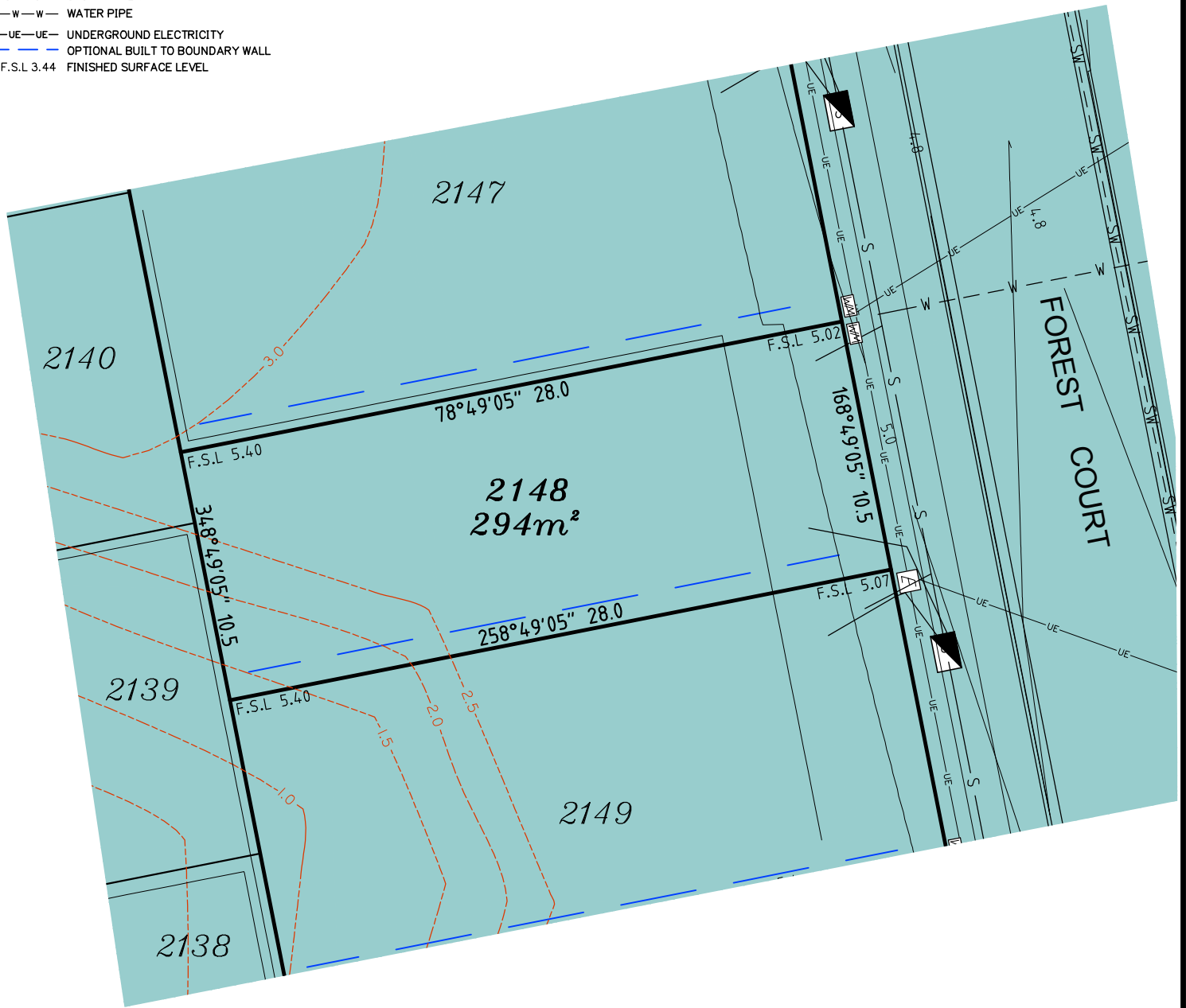


LEGEND

- . . . SEWER MANHOLE
- . . . SEWER MAINTENANCE SHAFT
- . . . SEWER RISING MAIN
- . . . STORMWATER MANHOLE
- . . . GULLY TRAP
- . . . WATER METER
- . . . FIRE HYDRANT
- . . . STOP VALVE
- . . . ELECTRICITY PILLAR
- . . . COMMS PIT
- . . . LIGHT POLE
- . . . EXISTING SURFACE CONTOURS
- . . . DESIGN CONTOURS
- . . . DESIGN FILL
- . . . SEWERAGE
- . . . STORMWATER
- . . . WATER PIPE
- . . . UNDERGROUND ELECTRICITY
- . . . OPTIONAL BUILT TO BOUNDARY WALL
- F.S.L 3.44 . . . FINISHED SURFACE LEVEL

Notes:

- Final areas are subject to design changes, Council approval and field survey and may differ from those shown on this Disclosure Plan.
- Final presentation of areas will comply with requirements of the Registrar of Titles and may vary from the format on this Disclosure Plan
- "The Seller is entitled to make a Permitted Variation (as defined in Special Condition 3 of the contract) to the lot including its location, area, size, dimensions and elevation".
- Design contours are approximate only and may change during construction
- Services have been plotted from design information only and may change during construction
- All earthworks fill to lots has been placed and compacted on Level 1 basis in accordance with Australian Standard AS3798-2007 "Guidelines on earthworks for commercial and residential developments".



Scale 1:250 - Lengths are in Metres.



**gassman
development
perspectives**

planning | environment | landscape | engineering | survey

T: 3807 3333 | F: 3287 5461 | www.gassman.com.au

Gold Coast & Logan | 176 Business Street, Yatala QLD | PO Box 392, Beenleigh 4207

Client	Helensvale Nominee Pty Ltd
Project	DISCLOSURE PLAN LOT 2148 (Survey plan: SP295981) THE SURROUNDS Country Club Drive Helensvale
Real Property Description:	Lot 961 on SP280862

Locality	HELENSVALE	Issue Date	24/08/2018
Local Govt	GOLD COAST CITY	Meridian	SP295981
Scale (on A4 original)	1:250	Level Datum	AHD
		Contour Interval	0.5m Existing 0.2m Design
		Drawn	NDB
		Date Drafted	03/08/2018
		Checked	JD

REFERENCE No.	5408-14-2E
PLAN No.	5408 S DC LOT 2148

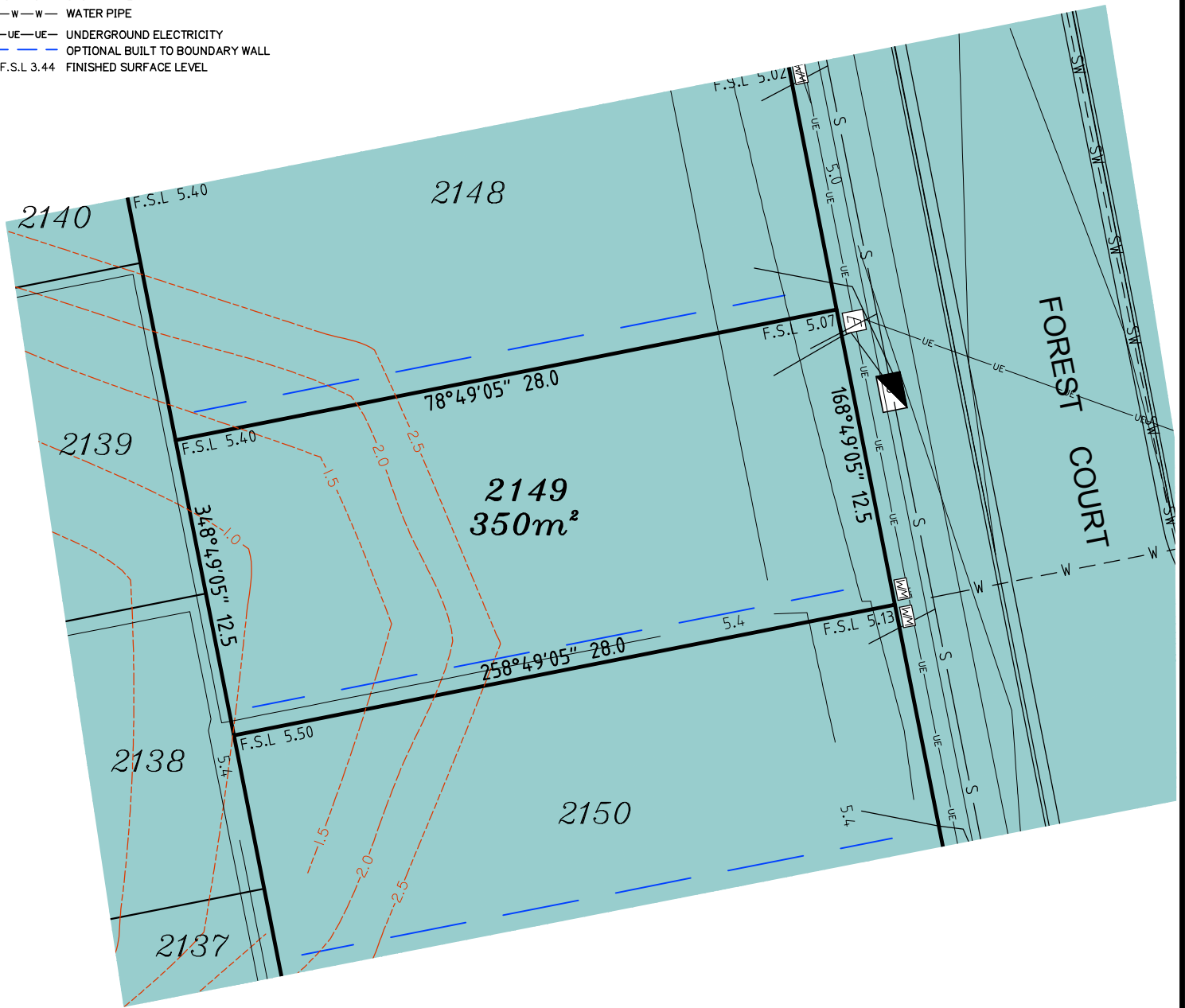


LEGEND

- . . . SEWER MANHOLE
- . . . SEWER MAINTENANCE SHAFT
- . . . SEWER RISING MAIN
- . . . STORMWATER MANHOLE
- . . . GULLY TRAP
- . . . WATER METER
- . . . FIRE HYDRANT
- . . . STOP VALVE
- . . . ELECTRICITY PILLAR
- . . . COMMS PIT
- . . . LIGHT POLE
- . . . EXISTING SURFACE CONTOURS
- . . . DESIGN CONTOURS
- . . . DESIGN FILL
- . . . SEWERAGE
- . . . STORMWATER
- . . . WATER PIPE
- . . . UNDERGROUND ELECTRICITY
- . . . OPTIONAL BUILT TO BOUNDARY WALL
- F.S.L 3.44 FINISHED SURFACE LEVEL

Notes:

- Final areas are subject to design changes, Council approval and field survey and may differ from those shown on this Disclosure Plan.
- Final presentation of areas will comply with requirements of the Registrar of Titles and may vary from the format on this Disclosure Plan
- "The Seller is entitled to make a Permitted Variation (as defined in Special Condition 3 of the contract) to the lot including its location, area, size, dimensions and elevation".
- Design contours are approximate only and may change during construction
- Services have been plotted from design information only and may change during construction
- All earthworks fill to lots has been placed and compacted on Level 1 basis in accordance with Australian Standard AS3798-2007 "Guidelines on earthworks for commercial and residential developments".



Scale 1:250 - Lengths are in Metres.



T: 3807 3333 | F: 3287 5461 | www.gassman.com.au
 Gold Coast & Logan | 76 Business Street, Yatala QLD | PO Box 392, Beenleigh 4207

Client	Helensvale Nominee Pty Ltd
Project	DISCLOSURE PLAN LOT 2149 (Survey plan: SP295981) THE SURROUNDS Country Club Drive Helensvale
Real Property Description:	Lot 961 on SP280862

Locality	HELENSVALE	Issue Date	24/08/2018
Local Govt	GOLD COAST CITY	Meridian	SP295981
Scale (on A4 original)	1:250	Level Datum	AHD
		Contour Interval	0.5m Existing 0.2m Design
		Drawn	NDB
		Date Drafted	03/08/2018
		Checked	JD

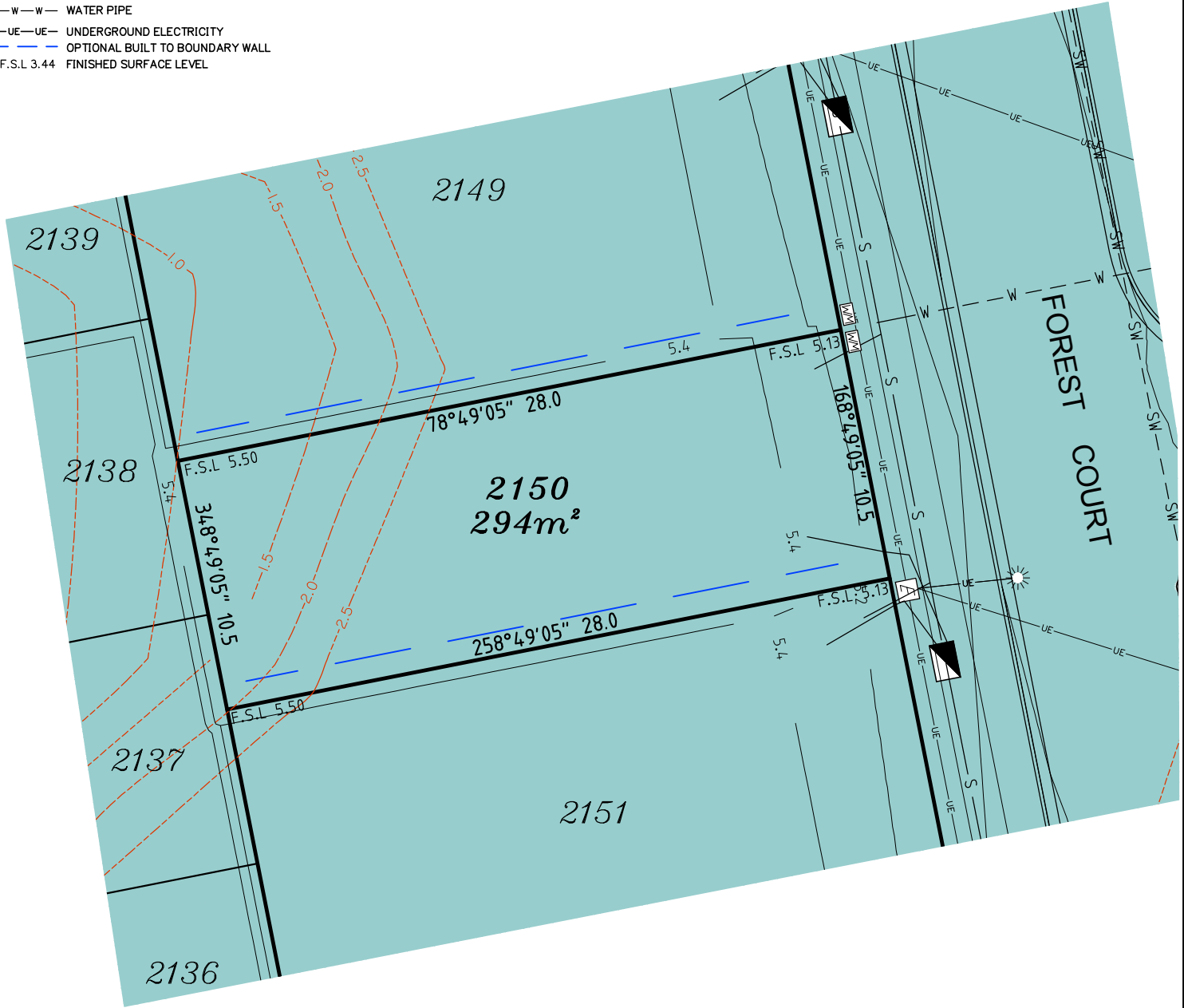
REFERENCE No. 5408-14-2E
PLAN No. 5408 S DC LOT 2149

LEGEND

- ⊙ . . . SEWER MANHOLE
- ⊙-RM . . . SEWER MAINTENANCE SHAFT
- ⊙-RM . . . SEWER RISING MAIN
- ⊙ . . . STORMWATER MANHOLE
- ⊙ . . . GULLY TRAP
- ⊙ . . . WATER METER
- ⊙ . . . FIRE HYDRANT
- ⊙ . . . STOP VALVE
- ⊙ . . . ELECTRICITY PILLAR
- ⊙ . . . COMMS PIT
- ⊙ . . . LIGHT POLE
- - - EXISTING SURFACE CONTOURS
- - - DESIGN CONTOURS
- █ . . . DESIGN FILL
- S-S- SEWERAGE
- SW-SW- STORMWATER
- W-W- WATER PIPE
- UE-UE- UNDERGROUND ELECTRICITY
- - - OPTIONAL BUILT TO BOUNDARY WALL
- F.S.L 3.44 FINISHED SURFACE LEVEL

Notes:

- Final areas are subject to design changes, Council approval and field survey and may differ from those shown on this Disclosure Plan.
- Final presentation of areas will comply with requirements of the Registrar of Titles and may vary from the format on this Disclosure Plan
- "The Seller is entitled to make a Permitted Variation (as defined in Special Condition 3 of the contract) to the lot including its location, area, size, dimensions and elevation".
- Design contours are approximate only and may change during construction
- Services have been plotted from design information only and may change during construction
- All earthworks fill to lots has been placed and compacted on Level 1 basis in accordance with Australian Standard AS3798-2007 "Guidelines on earthworks for commercial and residential developments".



Scale 1:250 - Lengths are in Metres.



gassman development perspectives
 est 1985
 planning | environment | landscape | engineering | survey
 T: 3807 3333 | F: 3287 5461 | www.gassman.com.au
 Gold Coast & Logan | 176 Business Street, Yatala QLD | PO Box 392, Beenleigh 4207

Client	Helensvale Nominee Pty Ltd
Project	DISCLOSURE PLAN LOT 2150 (Survey plan: SP295981) THE SURROUNDS Country Club Drive Helensvale
Real Property Description:	Lot 961 on SP280862

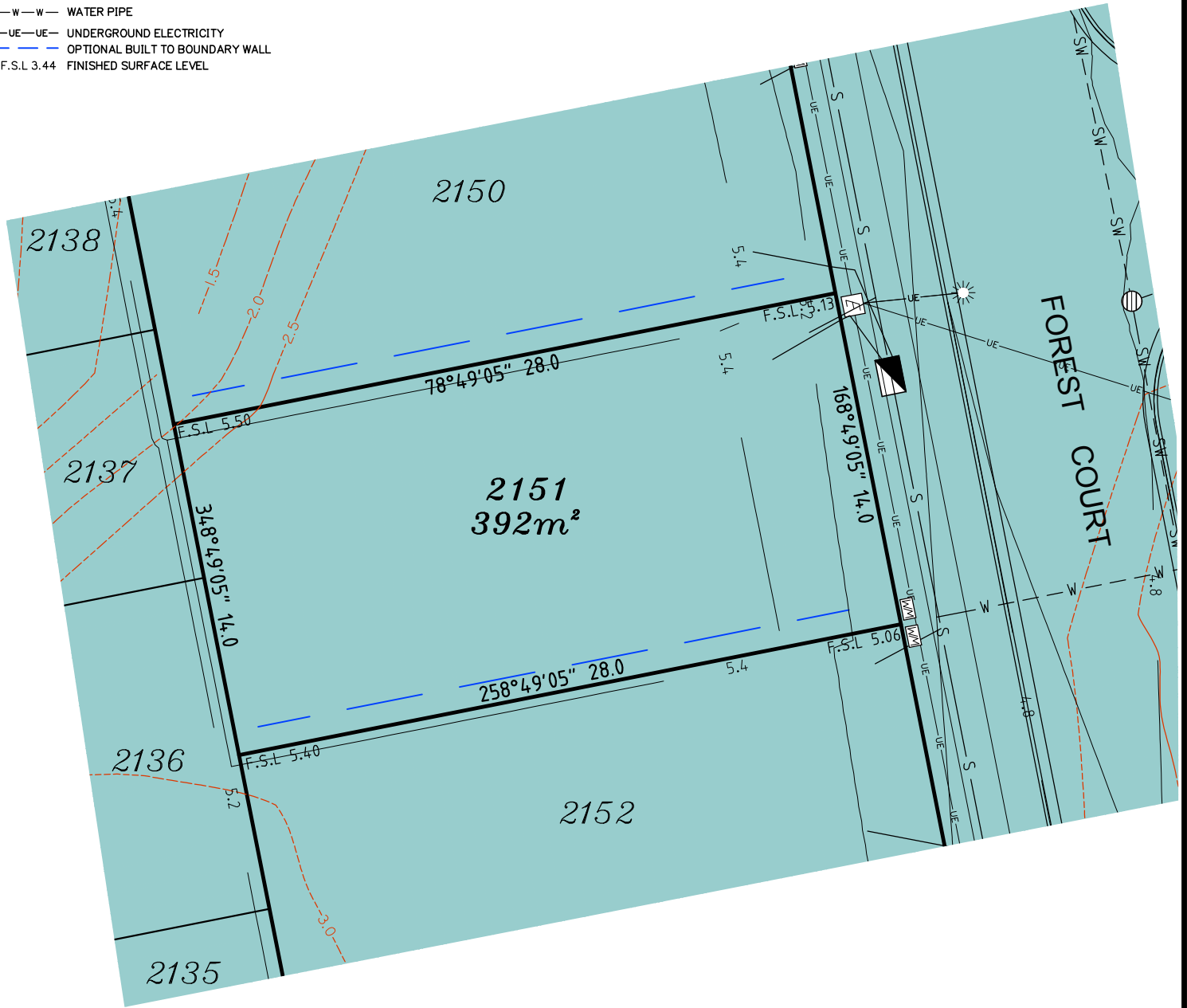
Locality	HELENSVALE	Issue Date	24/08/2018
Local Govt	GOLD COAST CITY	Meridian	SP295981
Scale (on A4 original)	1:250	Level Datum	AHD
		Contour Interval	0.5m Existing 0.2m Design
		Drawn	NDB
		Date Drafted	03/08/2018
		Checked	JD
REFERENCE No.	5408-14-2E		
PLAN No.	5408 S DC LOT 2150		

LEGEND

- ⊙ . . . SEWER MANHOLE
- ⊙-RM . . . SEWER MAINTENANCE SHAFT
- ⊙-RM . . . SEWER RISING MAIN
- ⊙ . . . STORMWATER MANHOLE
- ⊙ . . . GULLY TRAP
- ⊙ . . . WATER METER
- ⊙ . . . FIRE HYDRANT
- ⊙ . . . STOP VALVE
- ⊙ . . . ELECTRICITY PILLAR
- ⊙ . . . COMMS PIT
- ⊙ . . . LIGHT POLE
- - - EXISTING SURFACE CONTOURS
- - - DESIGN CONTOURS
- █ . . . DESIGN FILL
- S-S- SEWERAGE
- SW-SW- STORMWATER
- W-W- WATER PIPE
- UE-UE- UNDERGROUND ELECTRICITY
- - - OPTIONAL BUILT TO BOUNDARY WALL
- F.S.L 3.44 FINISHED SURFACE LEVEL

Notes:

- Final areas are subject to design changes, Council approval and field survey and may differ from those shown on this Disclosure Plan.
- Final presentation of areas will comply with requirements of the Registrar of Titles and may vary from the format on this Disclosure Plan
- "The Seller is entitled to make a Permitted Variation (as defined in Special Condition 3 of the contract) to the lot including its location, area, size, dimensions and elevation".
- Design contours are approximate only and may change during construction
- Services have been plotted from design information only and may change during construction
- All earthworks fill to lots has been placed and compacted on Level 1 basis in accordance with Australian Standard AS3798-2007 "Guidelines on earthworks for commercial and residential developments".



Scale 1:250 - Lengths are in Metres.



**gassman
development
perspectives**

est. 1985

planning | environment | landscape | engineering | survey

T: 3807 3333 | F: 3287 5461 | www.gassman.com.au

Gold Coast & Logan | 176 Business Street, Yatala QLD | PO Box 392, Beenleigh 4207

Client	Helensvale Nominee Pty Ltd
Project	DISCLOSURE PLAN LOT 2151 (Survey plan: SP295981) THE SURROUNDS Country Club Drive Helensvale
Real Property Description:	Lot 961 on SP280862

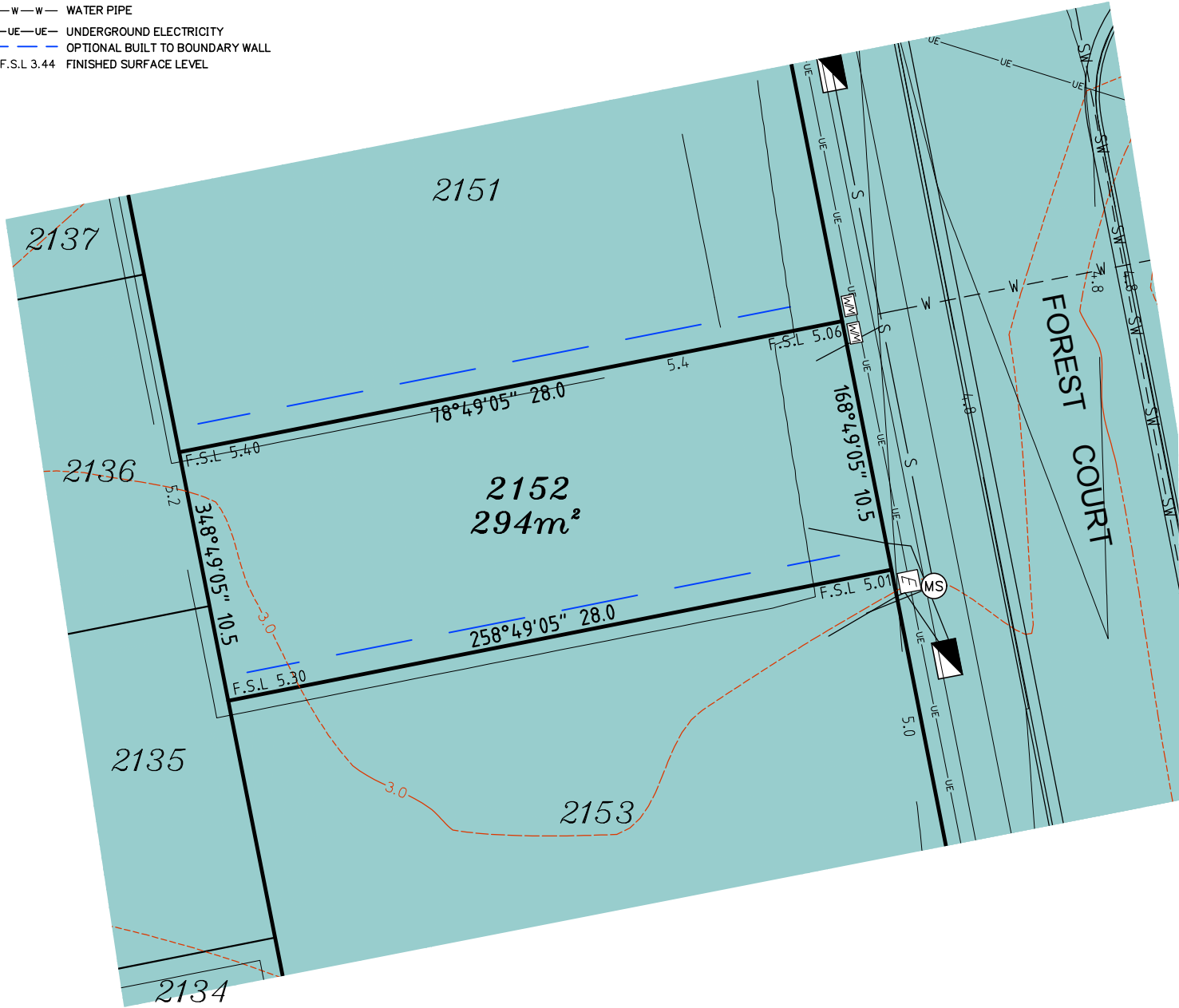
Locality	HELENSVALE	Issue Date	24/08/2018
Local Govt	GOLD COAST CITY	Meridian	SP295981
Scale (on A4 original)	1:250	Level Datum	AHD
		Contour Interval	0.5m Existing 0.2m Design
		Drawn	NDB
		Date Drafted	03/08/2018
		Checked	JD
REFERENCE No.	5408-14-2E		
PLAN No.	5408 S DC LOT 2151		

LEGEND

- ⊙ . . . SEWER MANHOLE
- ⊙-RM . . . SEWER MAINTENANCE SHAFT
- ⊙-RM . . . SEWER RISING MAIN
- ⊙ . . . STORMWATER MANHOLE
- ⊙ . . . GULLY TRAP
- ⊙ . . . WATER METER
- ⊙ . . . FIRE HYDRANT
- ⊙ . . . STOP VALVE
- ⊙ . . . ELECTRICITY PILLAR
- ⊙ . . . COMMS PIT
- ⊙ . . . LIGHT POLE
- - - EXISTING SURFACE CONTOURS
- - - DESIGN CONTOURS
- - - DESIGN FILL
- S-S- SEWERAGE
- SW-SW- STORMWATER
- W-W- WATER PIPE
- UE-UE- UNDERGROUND ELECTRICITY
- - - OPTIONAL BUILT TO BOUNDARY WALL
- F.S.L 3.44 FINISHED SURFACE LEVEL

Notes:

- Final areas are subject to design changes, Council approval and field survey and may differ from those shown on this Disclosure Plan.
- Final presentation of areas will comply with requirements of the Registrar of Titles and may vary from the format on this Disclosure Plan
- "The Seller is entitled to make a Permitted Variation (as defined in Special Condition 3 of the contract) to the lot including its location, area, size, dimensions and elevation".
- Design contours are approximate only and may change during construction
- Services have been plotted from design information only and may change during construction
- All earthworks fill to lots has been placed and compacted on Level 1 basis in accordance with Australian Standard AS3798-2007 "Guidelines on earthworks for commercial and residential developments".



gassman development perspectives
 est 1985
 planning | environment | landscape | engineering | survey
 T: 3807 3333 | F: 3287 5461 | www.gassman.com.au
 Gold Coast & Logan | 76 Business Street, Yatala QLD | PO Box 392, Beenleigh 4207

Client	Helensvale Nominee Pty Ltd
Project	DISCLOSURE PLAN LOT 2152 (Survey plan: SP295981) THE SURROUNDS Country Club Drive Helensvale
Real Property Description:	Lot 961 on SP280862

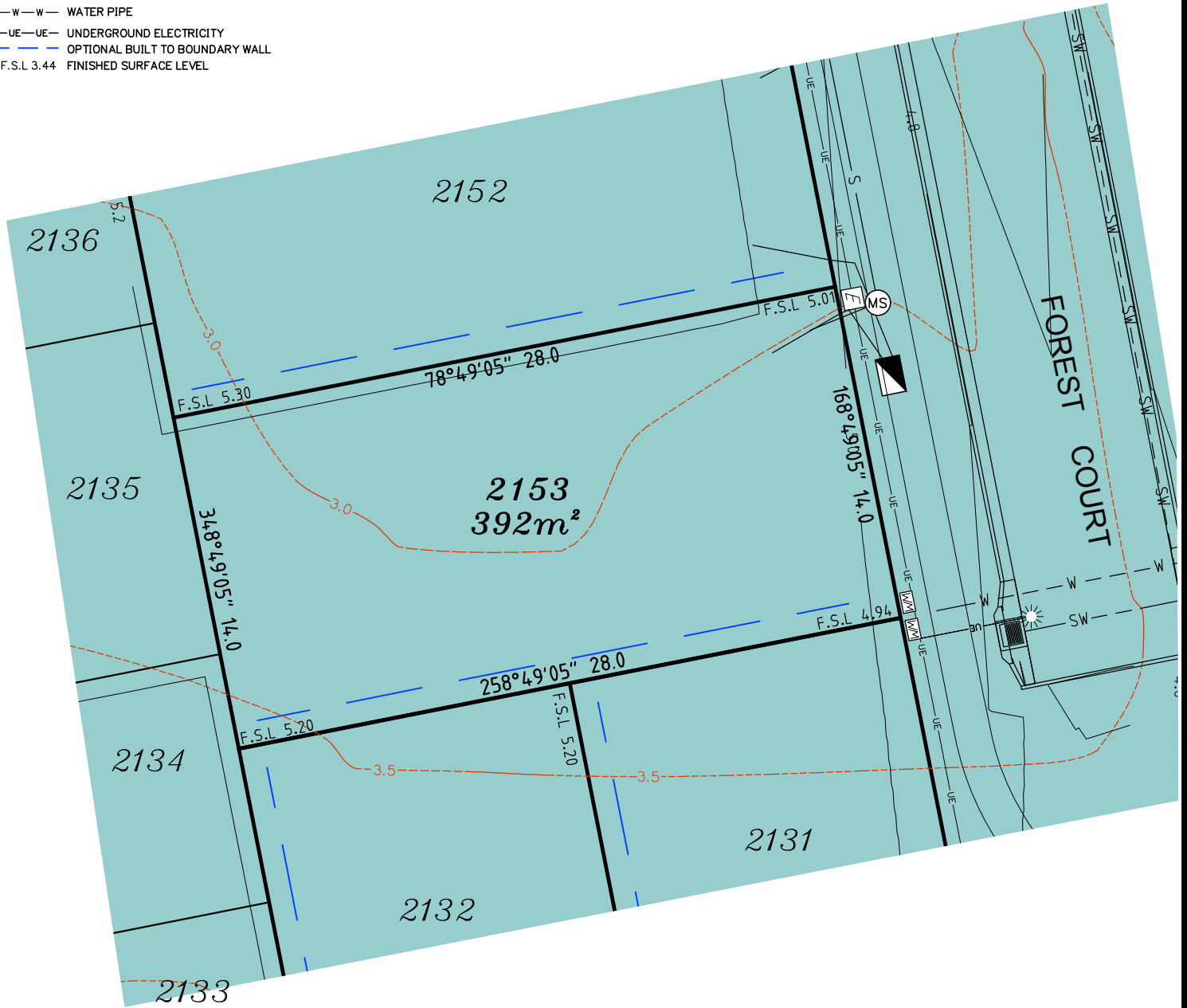
Locality	HELENSVALE	Issue Date	24/08/2018
Local Govt	GOLD COAST CITY	Meridian	SP295981
Scale (on A4 original)	1:250	Level Datum	AHD
REFERENCE No.	5408-14-2E	Contour Interval	0.5m Existing 0.2m Design
PLAN No.	5408 S DC LOT 2152	Drawn	NDB
		Date Drafted	03/08/2018
		Checked	JD

LEGEND

- ⊙ . . . SEWER MANHOLE
- ⊙-RM . . . SEWER MAINTENANCE SHAFT
- ⊙-RM . . . SEWER RISING MAIN
- ⊙ . . . STORMWATER MANHOLE
- ⊙ . . . GULLY TRAP
- ⊙ . . . WATER METER
- ⊙ . . . FIRE HYDRANT
- ⊙ . . . STOP VALVE
- ⊙ . . . ELECTRICITY PILLAR
- ⊙ . . . COMMS PIT
- ⊙ . . . LIGHT POLE
- - - EXISTING SURFACE CONTOURS
- - - DESIGN CONTOURS
- █ . . . DESIGN FILL
- S-S- SEWERAGE
- SW-SW- STORMWATER
- W-W- WATER PIPE
- UE-UE- UNDERGROUND ELECTRICITY
- - - OPTIONAL BUILT TO BOUNDARY WALL
- F.S.L 3.44 FINISHED SURFACE LEVEL

Notes:

- Final areas are subject to design changes, Council approval and field survey and may differ from those shown on this Disclosure Plan.
- Final presentation of areas will comply with requirements of the Registrar of Titles and may vary from the format on this Disclosure Plan
- "The Seller is entitled to make a Permitted Variation (as defined in Special Condition 3 of the contract) to the lot including its location, area, size, dimensions and elevation".
- Design contours are approximate only and may change during construction
- Services have been plotted from design information only and may change during construction
- All earthworks fill to lots has been placed and compacted on Level 1 basis in accordance with Australian Standard AS3798-2007 "Guidelines on earthworks for commercial and residential developments".



Scale 1:250 - Lengths are in Metres.



T: 3807 3333 | F: 3287 5461 | www.gassman.com.au
 Gold Coast & Logan | 76 Business Street, Yatala QLD | PO Box 392, Beenleigh 4207

Client
 Helensvale Nominee Pty Ltd

Project
DISCLOSURE PLAN
LOT 2153
 (Survey plan: SP295981)
THE SURROUNDS
Country Club Drive Helensvale

Locality HELENSVALE
 Local Govt GOLD COAST CITY
 Scale (on A4 original) 1:250

Issue Date 24/08/2018
 Meridian SP295981
 Level Datum AHD
 Contour Interval 0.5m Existing
 0.2m Design
 Drawn NDB
 Date Drafted 03/08/2018
 Checked JD

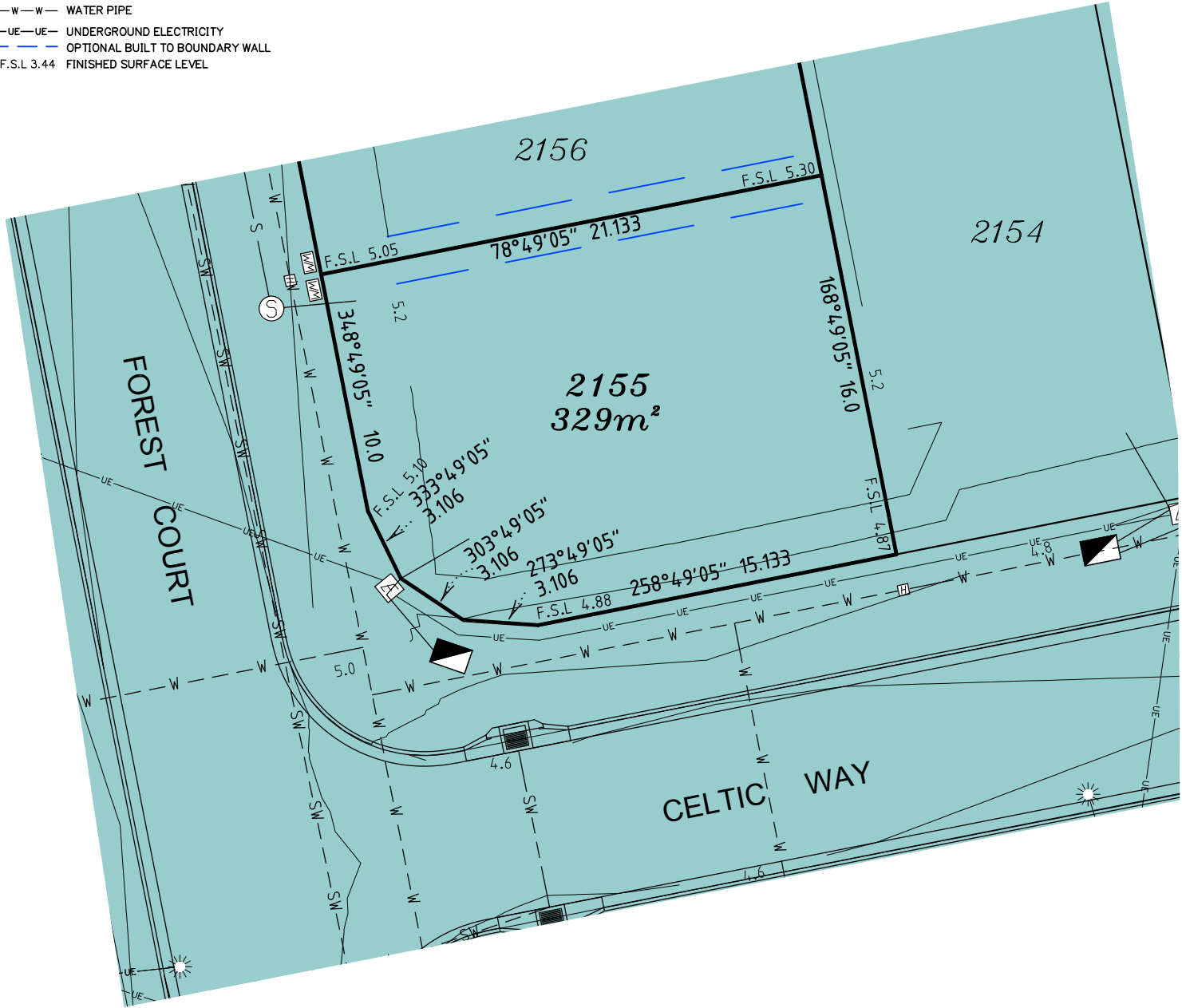
Real Property Description:
 Lot 961 on SP280862

REFERENCE No. 5408-14-2E
PLAN No. 5408 S DC LOT 2153

LEGEND

- ⊙ . . . SEWER MANHOLE
- ⊙ . . . SEWER MAINTENANCE SHAFT
- ⊙ . . . SEWER RISING MAIN
- ⊙ . . . STORMWATER MANHOLE
- ⊙ . . . GULLY TRAP
- ⊙ . . . WATER METER
- ⊙ . . . FIRE HYDRANT
- ⊙ . . . STOP VALVE
- ⊙ . . . ELECTRICITY PILLAR
- ⊙ . . . COMMS PIT
- ⊙ . . . LIGHT POLE
- — — EXISTING SURFACE CONTOURS
- — — DESIGN CONTOURS
- █ . . . DESIGN FILL
- S—S— SEWERAGE
- SW—SW— STORMWATER
- W—W— WATER PIPE
- UE—UE— UNDERGROUND ELECTRICITY
- — — OPTIONAL BUILT TO BOUNDARY WALL
- F.S.L 3.44 FINISHED SURFACE LEVEL

- Notes:**
- Final areas are subject to design changes, Council approval and field survey and may differ from those shown on this Disclosure Plan.
 - Final presentation of areas will comply with requirements of the Registrar of Titles and may vary from the format on this Disclosure Plan
 - "The Seller is entitled to make a Permitted Variation (as defined in Special Condition 3 of the contract) to the lot including its location, area, size, dimensions and elevation".
 - Design contours are approximate only and may change during construction
 - Services have been plotted from design information only and may change during construction
 - All earthworks fill to lots has been placed and compacted on Level 1 basis in accordance with Australian Standard AS3798-2007 "Guidelines on earthworks for commercial and residential developments".



Scale 1:250 - Lengths are in Metres.



gassman
development
perspectives

est 1985

planning | environment | landscape | engineering | survey

T: 3807 3333 | F: 3287 5461 | www.gassman.com.au

Gold Coast & Logan | 176 Business Street, Yatala QLD | PO Box 392, Beenleigh 4207

Client	Helensvale Nominee Pty Ltd
Project	DISCLOSURE PLAN LOT 2155 (Survey plan: SP295981) THE SURROUNDS Country Club Drive Helensvale
Real Property Description:	Lot 961 on SP280862

Locality	HELENSVALE	Issue Date	24/08/2018
Local Govt	GOLD COAST CITY	Meridian	SP295981
Scale (on A4 original)	1:250	Level Datum	AHD
		Contour Interval	0.5m Existing 0.2m Design
		Drawn	NDB
		Date Drafted	03/08/2018
		Checked	JD

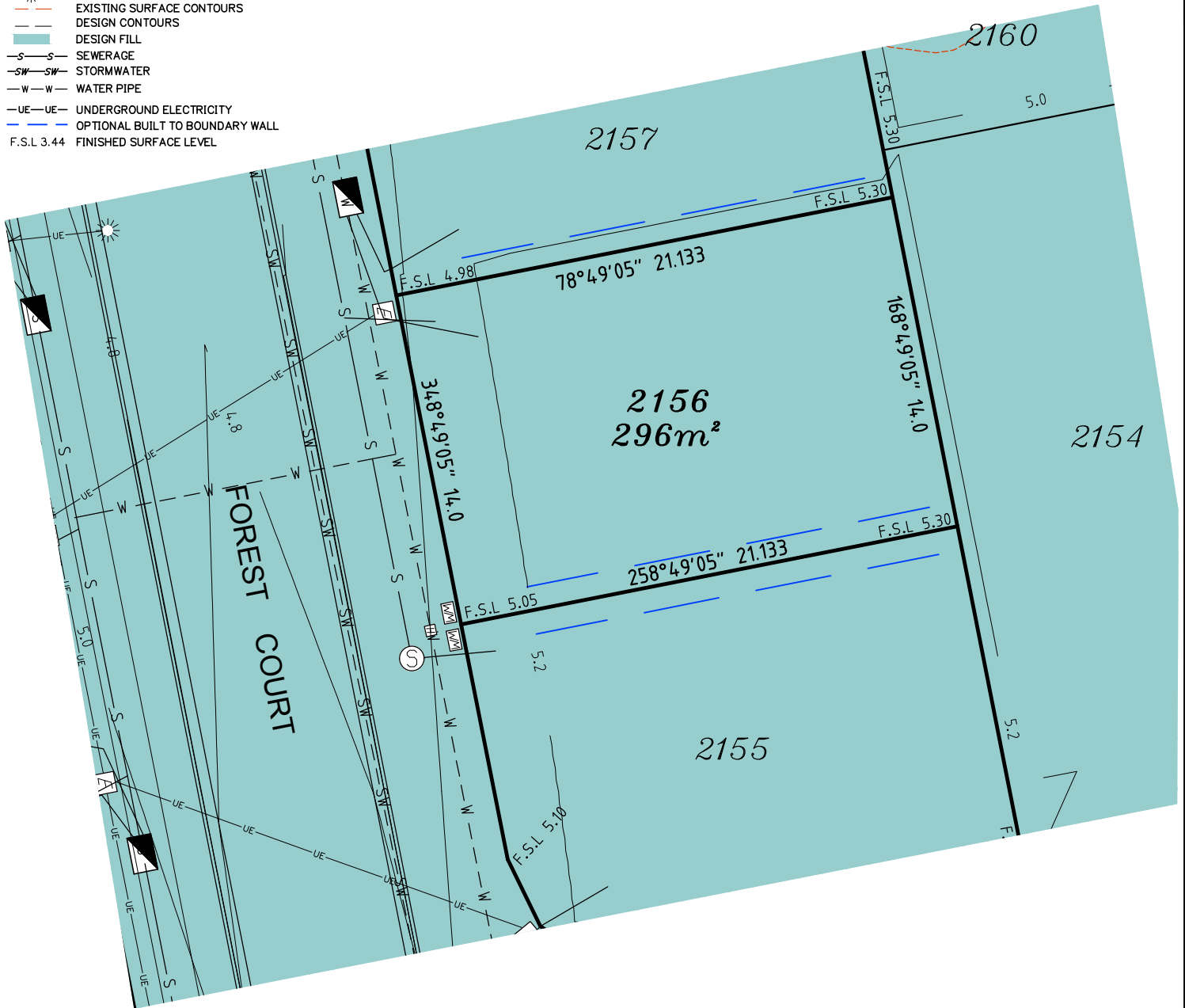
REFERENCE No. 5408-14-2E
PLAN No. 5408 S DC LOT 2155

LEGEND

- ⊙ . . . SEWER MANHOLE
- ⊙ . . . SEWER MAINTENANCE SHAFT
- ⊙ . . . SEWER RISING MAIN
- ⊙ . . . STORMWATER MANHOLE
- ⊙ . . . GULLY TRAP
- ⊙ . . . WATER METER
- ⊙ . . . FIRE HYDRANT
- ⊙ . . . STOP VALVE
- ⊙ . . . ELECTRICITY PILLAR
- ⊙ . . . COMMS PIT
- ⊙ . . . LIGHT POLE
- — — EXISTING SURFACE CONTOURS
- — — DESIGN CONTOURS
- █ . . . DESIGN FILL
- S—S— SEWERAGE
- SW—SW— STORMWATER
- W—W— WATER PIPE
- UE—UE— UNDERGROUND ELECTRICITY
- — — OPTIONAL BUILT TO BOUNDARY WALL
- F.S.L 3.44 FINISHED SURFACE LEVEL

Notes:

- Final areas are subject to design changes, Council approval and field survey and may differ from those shown on this Disclosure Plan.
- Final presentation of areas will comply with requirements of the Registrar of Titles and may vary from the format on this Disclosure Plan
- "The Seller is entitled to make a Permitted Variation (as defined in Special Condition 3 of the contract) to the lot including its location, area, size, dimensions and elevation".
- Design contours are approximate only and may change during construction
- Services have been plotted from design information only and may change during construction
- All earthworks fill to lots has been placed and compacted on Level 1 basis in accordance with Australian Standard AS3798-2007 "Guidelines on earthworks for commercial and residential developments".



Scale 1:250 - Lengths are in Metres.



gassman
development
perspectives

est 1985

planning | environment | landscape | engineering | survey

T: 3807 3333 | F: 3287 5461 | www.gassman.com.au

Gold Coast & Logan | 176 Business Street, Yatala QLD | PO Box 392, Beenleigh 4207

Client	Helensvale Nominee Pty Ltd
Project	DISCLOSURE PLAN LOT 2156 (Survey plan: SP295981) THE SURROUNDS Country Club Drive Helensvale

Locality	HELENSVALE	Issue Date	24/08/2018
Local Govt	GOLD COAST CITY	Meridian	SP295981
Scale (on A4 original)	1:250	Level Datum	AHD
		Contour Interval	0.5m Existing 0.2m Design
		Drawn	NDB
		Date Drafted	03/08/2018
		Checked	JD

Real Property Description:
Lot 961 on SP280862

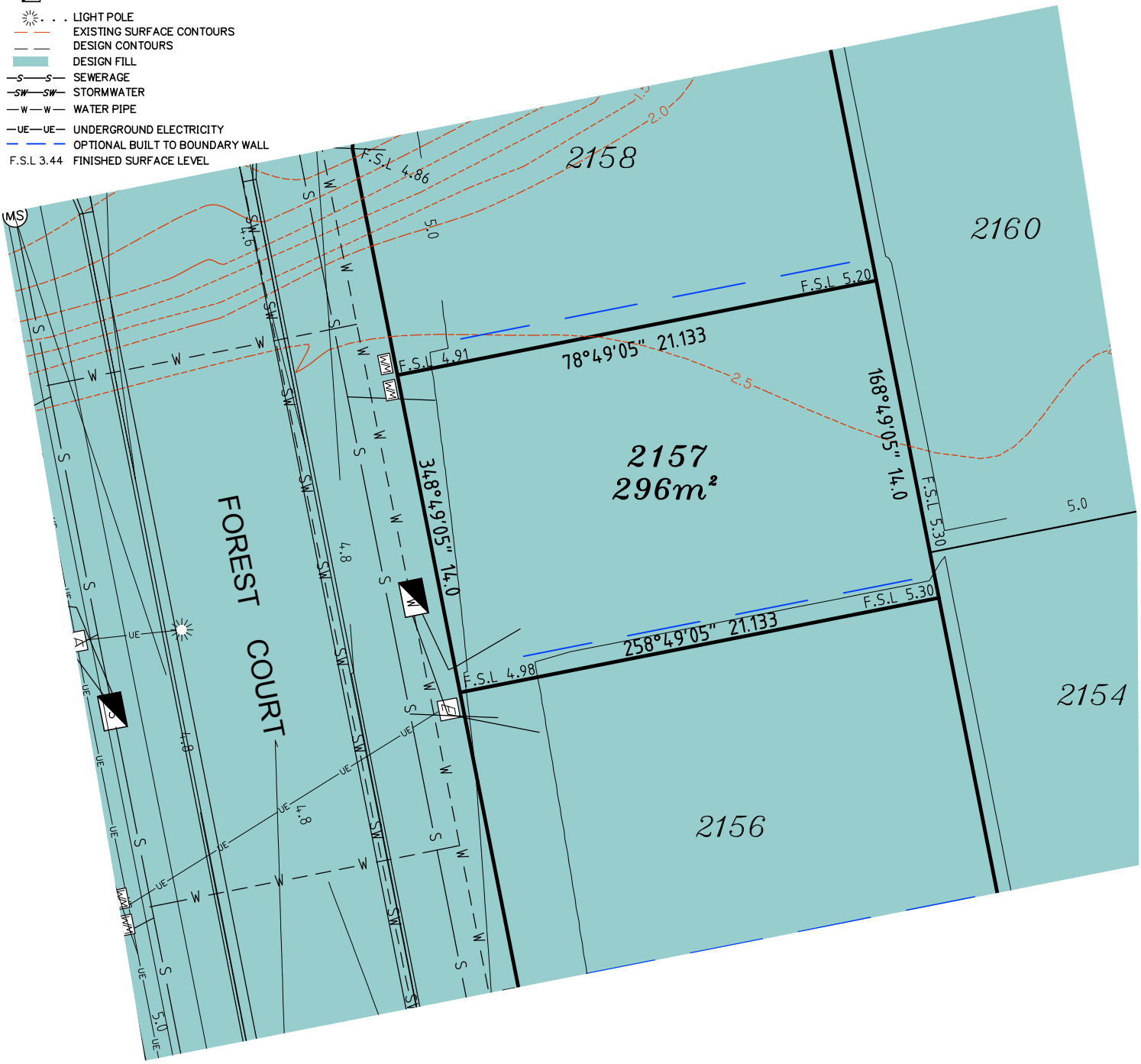
REFERENCE No. 5408-14-2E
PLAN No. 5408 S DC LOT 2156

LEGEND

- . . . SEWER MANHOLE
- . . . SEWER MAINTENANCE SHAFT
- . . . SEWER RISING MAIN
- . . . STORMWATER MANHOLE
- . . . GULLY TRAP
- . . . WATER METER
- . . . FIRE HYDRANT
- . . . STOP VALVE
- . . . ELECTRICITY PILLAR
- . . . COMMS PIT
- . . . LIGHT POLE
- . . . EXISTING SURFACE CONTOURS
- . . . DESIGN CONTOURS
- . . . DESIGN FILL
- . . . SEWERAGE
- . . . STORMWATER
- . . . WATER PIPE
- . . . UNDERGROUND ELECTRICITY
- . . . OPTIONAL BUILT TO BOUNDARY WALL
- F.S.L 3.44 . . . FINISHED SURFACE LEVEL

Notes:

- Final areas are subject to design changes, Council approval and field survey and may differ from those shown on this Disclosure Plan.
- Final presentation of areas will comply with requirements of the Registrar of Titles and may vary from the format on this Disclosure Plan
- "The Seller is entitled to make a Permitted Variation (as defined in Special Condition 3 of the contract) to the lot including its location, area, size, dimensions and elevation".
- Design contours are approximate only and may change during construction
- Services have been plotted from design information only and may change during construction
- All earthworks fill to lots has been placed and compacted on Level 1 basis in accordance with Australian Standard AS3798-2007 "Guidelines on earthworks for commercial and residential developments".



Scale 1:250 - Lengths are in Metres.



T: 3807 3333 | F: 3287 5461 | www.gassman.com.au
 Gold Coast & Logan | 176 Business Street, Yatala QLD | PO Box 392, Beenleigh 4207

Client
 Helensvale Nominee Pty Ltd

Project
DISCLOSURE PLAN
LOT 2157
 (Survey plan: SP295981)
THE SURROUNDS
Country Club Drive Helensvale

Locality HELENSVALE
 Local Govt GOLD COAST CITY
 Scale (on A4 original) 1:250

Issue Date 24/08/2018
 Meridian SP295981
 Level Datum AHD
 Contour Interval 0.5m Existing 0.2m Design
 Drawn NDB
 Date Drafted 03/08/2018
 Checked JD

Real Property Description:
 Lot 961 on SP280862

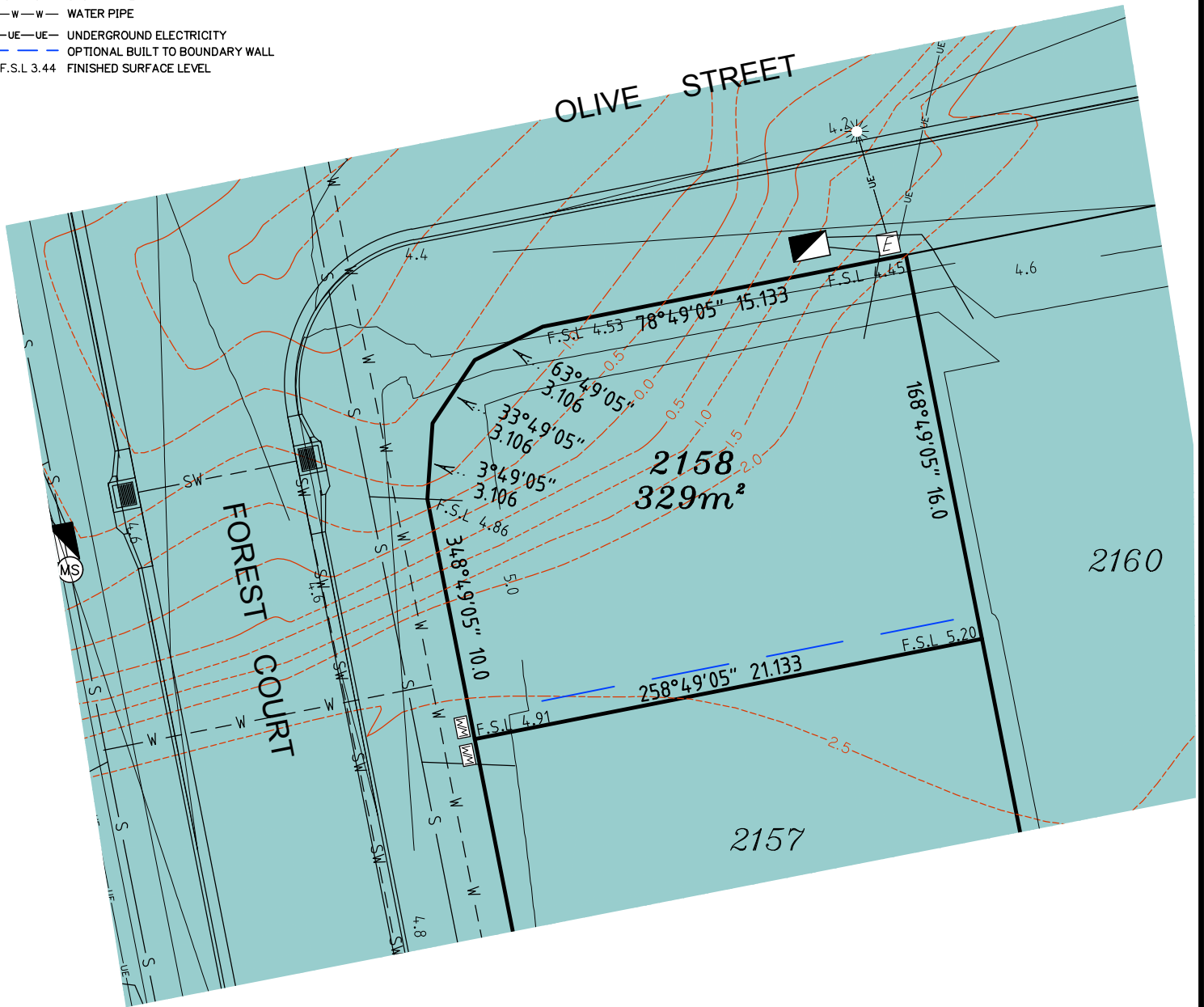
REFERENCE No. 5408-14-2E
PLAN No. 5408 S DC LOT 2157

LEGEND

- ⊙ . . . SEWER MANHOLE
- ⊙-M . . . SEWER MAINTENANCE SHAFT
- ⊙-RM . . . SEWER RISING MAIN
- ⊙ . . . STORMWATER MANHOLE
- ⊙ . . . GULLY TRAP
- ⊙ . . . WATER METER
- ⊙ . . . FIRE HYDRANT
- ⊙ . . . STOP VALVE
- ⊙ . . . ELECTRICITY PILLAR
- ⊙ . . . COMMS PIT
- ⊙ . . . LIGHT POLE
- - - EXISTING SURFACE CONTOURS
- - - DESIGN CONTOURS
- █ . . . DESIGN FILL
- S-S- SEWERAGE
- SW-SW- STORMWATER
- W-W- WATER PIPE
- UE-UE- UNDERGROUND ELECTRICITY
- - - OPTIONAL BUILT TO BOUNDARY WALL
- F.S.L 3.44 FINISHED SURFACE LEVEL

Notes:

- Final areas are subject to design changes, Council approval and field survey and may differ from those shown on this Disclosure Plan.
- Final presentation of areas will comply with requirements of the Registrar of Titles and may vary from the format on this Disclosure Plan
- "The Seller is entitled to make a Permitted Variation (as defined in Special Condition 3 of the contract) to the lot including its location, area, size, dimensions and elevation".
- Design contours are approximate only and may change during construction
- Services have been plotted from design information only and may change during construction
- All earthworks fill to lots has been placed and compacted on Level 1 basis in accordance with Australian Standard AS3798-2007 "Guidelines on earthworks for commercial and residential developments".



Scale 1:250 - Lengths are in Metres.



T: 3807 3333 | F: 3287 5461 | www.gassman.com.au
Gold Coast & Logan | 176 Business Street, Yatala QLD | PO Box 392, Beenleigh 4207

Client	Helensvale Nominee Pty Ltd
Project	DISCLOSURE PLAN LOT 2158 (Survey plan: SP295981) THE SURROUNDS Country Club Drive Helensvale

Locality	HELENSVALE	Issue Date	24/08/2018
Local Govt	GOLD COAST CITY	Meridian	SP295981
Scale (on A4 original)	1:250	Level Datum	AHD
		Contour Interval	0.5m Existing 0.2m Design
		Drawn	NDB
		Date Drafted	03/08/2018
		Checked	JD

Real Property Description:
Lot 961 on SP280862

REFERENCE No. 5408-14-2E
PLAN No. 5408 S DC LOT 2158

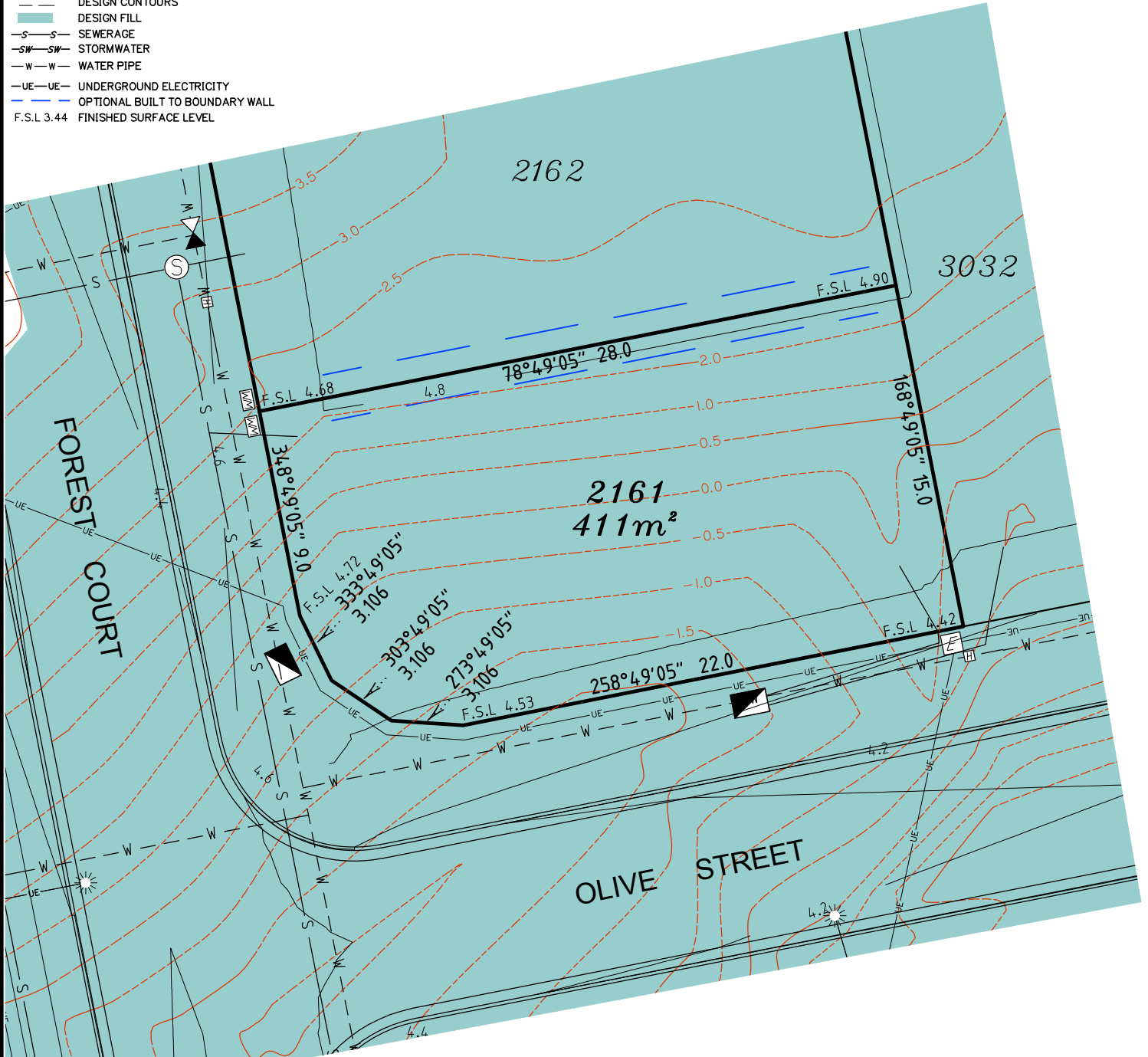


LEGEND

- . . . SEWER MANHOLE
- . . . SEWER MAINTENANCE SHAFT
- . . . SEWER RISING MAIN
- . . . STORMWATER MANHOLE
- . . . GULLY TRAP
- . . . WATER METER
- . . . FIRE HYDRANT
- . . . STOP VALVE
- . . . ELECTRICITY PILLAR
- . . . COMMS PIT
- . . . LIGHT POLE
- . . . EXISTING SURFACE CONTOURS
- . . . DESIGN CONTOURS
- . . . DESIGN FILL
- . . . SEWERAGE
- . . . STORMWATER
- . . . WATER PIPE
- . . . UNDERGROUND ELECTRICITY
- . . . OPTIONAL BUILT TO BOUNDARY WALL
- F.S.L 3.44 FINISHED SURFACE LEVEL

Notes:

- Final areas are subject to design changes, Council approval and field survey and may differ from those shown on this Disclosure Plan.
- Final presentation of areas will comply with requirements of the Registrar of Titles and may vary from the format on this Disclosure Plan
- "The Seller is entitled to make a Permitted Variation (as defined in Special Condition 3 of the contract) to the lot including its location, area, size, dimensions and elevation".
- Design contours are approximate only and may change during construction
- Services have been plotted from design information only and may change during construction
- All earthworks fill to lots has been placed and compacted on Level 1 basis in accordance with Australian Standard AS3798-2007 "Guidelines on earthworks for commercial and residential developments".



Scale 1:250 - Lengths are in Metres.




**gassman
development
perspectives**

estd 1985

planning | environment | landscape | engineering | survey

T: 3807 3333 | F: 3287 5461 | www.gassman.com.au

Gold Coast & Logan | 76 Business Street, Yatala QLD | PO Box 392, Beenleigh 4207

Client	Helensvale Nominee Pty Ltd
Project	DISCLOSURE PLAN LOT 2161 (Survey plan: SP295981) THE SURROUNDS Country Club Drive Helensvale
Real Property Description:	Lot 961 on SP280862

Locality	HELENSVALE	Issue Date	24/08/2018
Local Govt	GOLD COAST CITY	Meridian	SP295981
Scale (on A4 original)	1:250	Level Datum	AHD
		Contour Interval	0.5m Existing 0.2m Design
		Drawn	NDB
		Date Drafted	03/08/2018
		Checked	JD

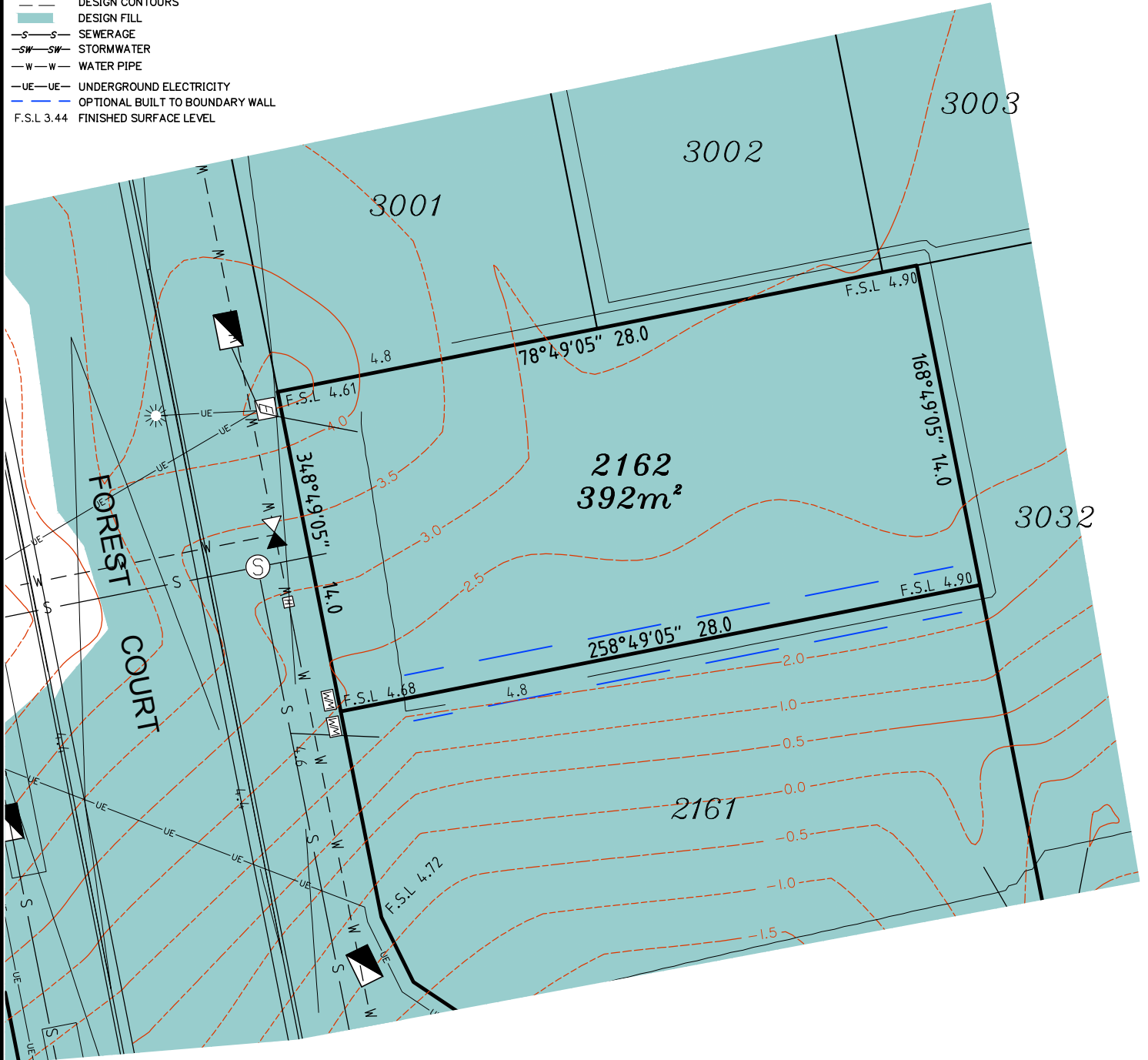
REFERENCE No.	5408-14-2E
PLAN No.	5408 S DC LOT 2161

LEGEND

- ⊙ . . . SEWER MANHOLE
- ⊙ . . . SEWER MAINTENANCE SHAFT
- ⊙ . . . RM SEWER RISING MAIN
- ⊙ . . . STORMWATER MANHOLE
- ⊙ . . . GULLY TRAP
- ⊙ . . . WATER METER
- ⊙ . . . FIRE HYDRANT
- ⊙ . . . STOP VALVE
- ⊙ . . . ELECTRICITY PILLAR
- ⊙ . . . COMMS PIT
- ⊙ . . . LIGHT POLE
- EXISTING SURFACE CONTOURS
- DESIGN CONTOURS
- DESIGN FILL
- S--- SEWERAGE
- SW--- STORMWATER
- W--- WATER PIPE
- UE--- UNDERGROUND ELECTRICITY
- OPTIONAL BUILT TO BOUNDARY WALL
- F.S.L 3.44 FINISHED SURFACE LEVEL

Notes:

- Final areas are subject to design changes, Council approval and field survey and may differ from those shown on this Disclosure Plan.
- Final presentation of areas will comply with requirements of the Registrar of Titles and may vary from the format on this Disclosure Plan
- "The Seller is entitled to make a Permitted Variation (as defined in Special Condition 3 of the contract) to the lot including its location, area, size, dimensions and elevation".
- Design contours are approximate only and may change during construction
- Services have been plotted from design information only and may change during construction
- All earthworks fill to lots has been placed and compacted on Level 1 basis in accordance with Australian Standard AS3798-2007 "Guidelines on earthworks for commercial and residential developments".



Scale 1:250 - Lengths are in Metres.



**gassman
development
perspectives**

planning | environment | landscape | engineering | survey
T: 3807 3333 | F: 3287 5461 | www.gassman.com.au
Gold Coast & Logan | 176 Business Street, Yatala QLD | PO Box 392, Beenleigh 4207

Client	Helensvale Nominee Pty Ltd
Project	DISCLOSURE PLAN LOT 2162 (Survey plan: SP295981) THE SURROUNDS Country Club Drive Helensvale

Locality	HELENSVALE
Local Govt	GOLD COAST CITY
Scale (on A4 original)	1:250

Issue Date	24/08/2018
Meridian	SP295981
Level Datum	AHD
Contour Interval	0.5m Existing 0.2m Design
Drawn	NDB
Date Drafted	03/08/2018
Checked	JD

Real Property Description:
Lot 961 on SP280862

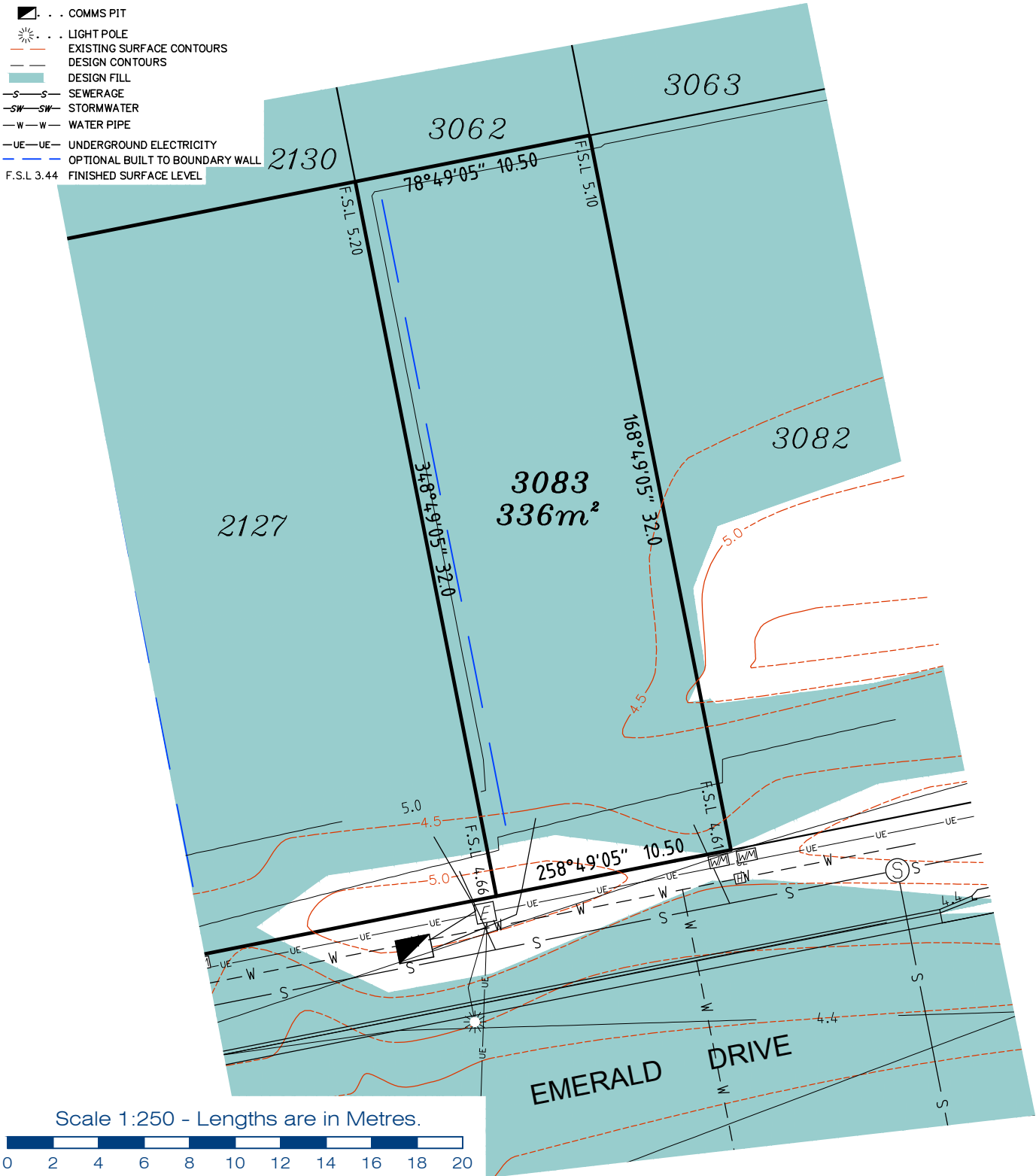
REFERENCE No. 5408-14-2E
PLAN No. 5408 S DC LOT 2162

LEGEND

- ⊙ . . . SEWER MANHOLE
- ⊙-RM . . . SEWER MAINTENANCE SHAFT
- ⊙-RM . . . SEWER RISING MAIN
- ⊙ . . . STORMWATER MANHOLE
- ⊙ . . . GULLY TRAP
- ⊙ . . . WATER METER
- ⊙ . . . FIRE HYDRANT
- ⊙ . . . STOP VALVE
- ⊙ . . . ELECTRICITY PILLAR
- ⊙ . . . COMMS PIT
- ⊙ . . . LIGHT POLE
- - - EXISTING SURFACE CONTOURS
- - - DESIGN CONTOURS
- █ . . . DESIGN FILL
- S-S- SEWERAGE
- SW-SW- STORMWATER
- W-W- WATER PIPE
- UE-UE- UNDERGROUND ELECTRICITY
- - - OPTIONAL BUILT TO BOUNDARY WALL
- F.S.L. 3.44 FINISHED SURFACE LEVEL

Notes:

- Final areas are subject to design changes, Council approval and field survey and may differ from those shown on this Disclosure Plan.
- Final presentation of areas will comply with requirements of the Registrar of Titles and may vary from the format on this Disclosure Plan
- "The Seller is entitled to make a Permitted Variation (as defined in Special Condition 3 of the contract) to the lot including its location, area, size, dimensions and elevation".
- Design contours are approximate only and may change during construction
- Services have been plotted from design information only and may change during construction
- All earthworks fill to lots has been placed and compacted on Level 1 basis in accordance with Australian Standard AS3798-2007 "Guidelines on earthworks for commercial and residential developments".



**gassman
development
perspectives**
est. 1985

planning | environment | landscape | engineering | survey

T: 3807 3333 | F: 3287 5461 | www.gassman.com.au

Gold Coast & Logan | 76 Business Street, Yatala QLD | PO Box 392, Beenleigh 4207

Client	Helensvale Nominee Pty Ltd
Project	DISCLOSURE PLAN LOT 3083 (Survey plan: SP295981) THE SURROUNDS Country Club Drive Helensvale

Locality	HELENSVALE	Issue Date	24/08/2018
Local Govt	GOLD COAST CITY	Meridian	SP295981
Scale (on A4 original)	1:250	Level Datum	AHD
		Contour Interval	0.5m Existing 0.2m Design
		Drawn	NDB
		Date Drafted	03/08/2018
		Checked	JD

Real Property Description:
Lot 961 on SP280862

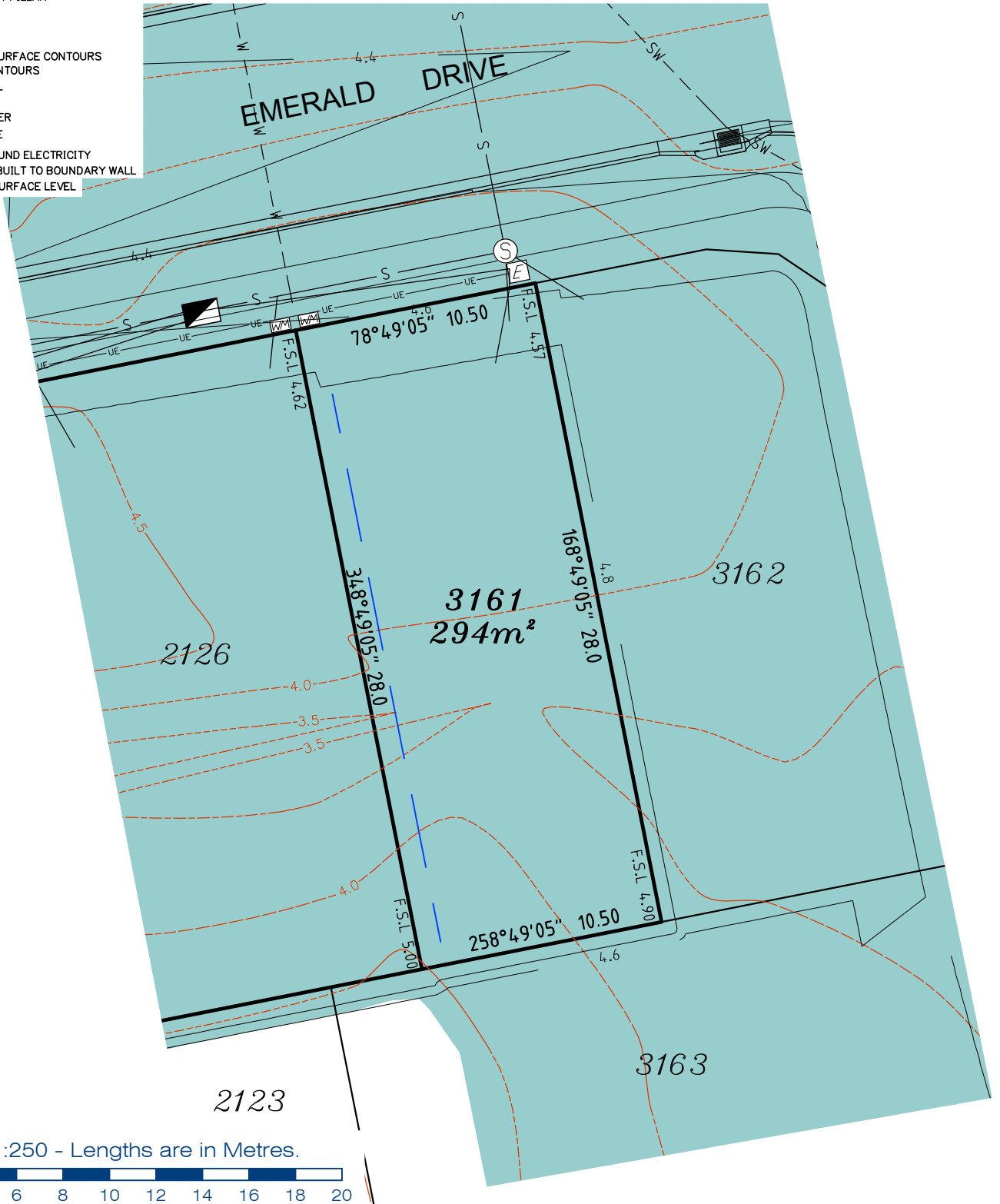
REFERENCE No. 5408-14-2E
PLAN No. 5408 S DC LOT 3083

LEGEND

- ⊙ . . . SEWER MANHOLE
- ⊙-RM . . . SEWER MAINTENANCE SHAFT
- ⊙-RM . . . SEWER RISING MAIN
- ⊙ . . . STORMWATER MANHOLE
- ⊙ . . . GULLY TRAP
- ⊙ . . . WATER METER
- ⊙ . . . FIRE HYDRANT
- ⊙ . . . STOP VALVE
- ⊙ . . . ELECTRICITY PILLAR
- ⊙ . . . COMMS PIT
- ⊙ . . . LIGHT POLE
- - - EXISTING SURFACE CONTOURS
- - - DESIGN CONTOURS
- - - DESIGN FILL
- S-S- SEWERAGE
- SW-SW- STORMWATER
- W-W- WATER PIPE
- UE-UE- UNDERGROUND ELECTRICITY
- - - OPTIONAL BUILT TO BOUNDARY WALL
- F.S.L 3.44 FINISHED SURFACE LEVEL

Notes:

- Final areas are subject to design changes, Council approval and field survey and may differ from those shown on this Disclosure Plan.
- Final presentation of areas will comply with requirements of the Registrar of Titles and may vary from the format on this Disclosure Plan
- "The Seller is entitled to make a Permitted Variation (as defined in Special Condition 3 of the contract) to the lot including its location, area, size, dimensions and elevation".
- Design contours are approximate only and may change during construction
- Services have been plotted from design information only and may change during construction
- All earthworks fill to lots has been placed and compacted on Level 1 basis in accordance with Australian Standard AS3798-2007 "Guidelines on earthworks for commercial and residential developments".



Scale 1:250 - Lengths are in Metres.



est 1985

planning | environment | landscape | engineering | survey

T: 3807 3333 | F: 3287 5461 | www.gassman.com.au

Gold Coast & Logan | 76 Business Street, Yatala QLD | PO Box 392, Beenleigh 4207

Client	Helensvale Nominee Pty Ltd
Project	DISCLOSURE PLAN LOT 3161 (Survey plan: SP295981) THE SURROUNDS Country Club Drive Helensvale

Locality	HELENSVALE	Issue Date	24/08/2018
Local Govt	GOLD COAST CITY	Meridian	SP295981
Scale (on A4 original)	1:250	Level Datum	AHD
		Contour Interval	0.5m Existing 0.2m Design
		Drawn	NDB
		Date Drafted	03/08/2018
		Checked	JD

Real Property Description:
Lot 961 on SP280862

REFERENCE No. 5408-14-2E
PLAN No. 5408 S DC LOT 3161