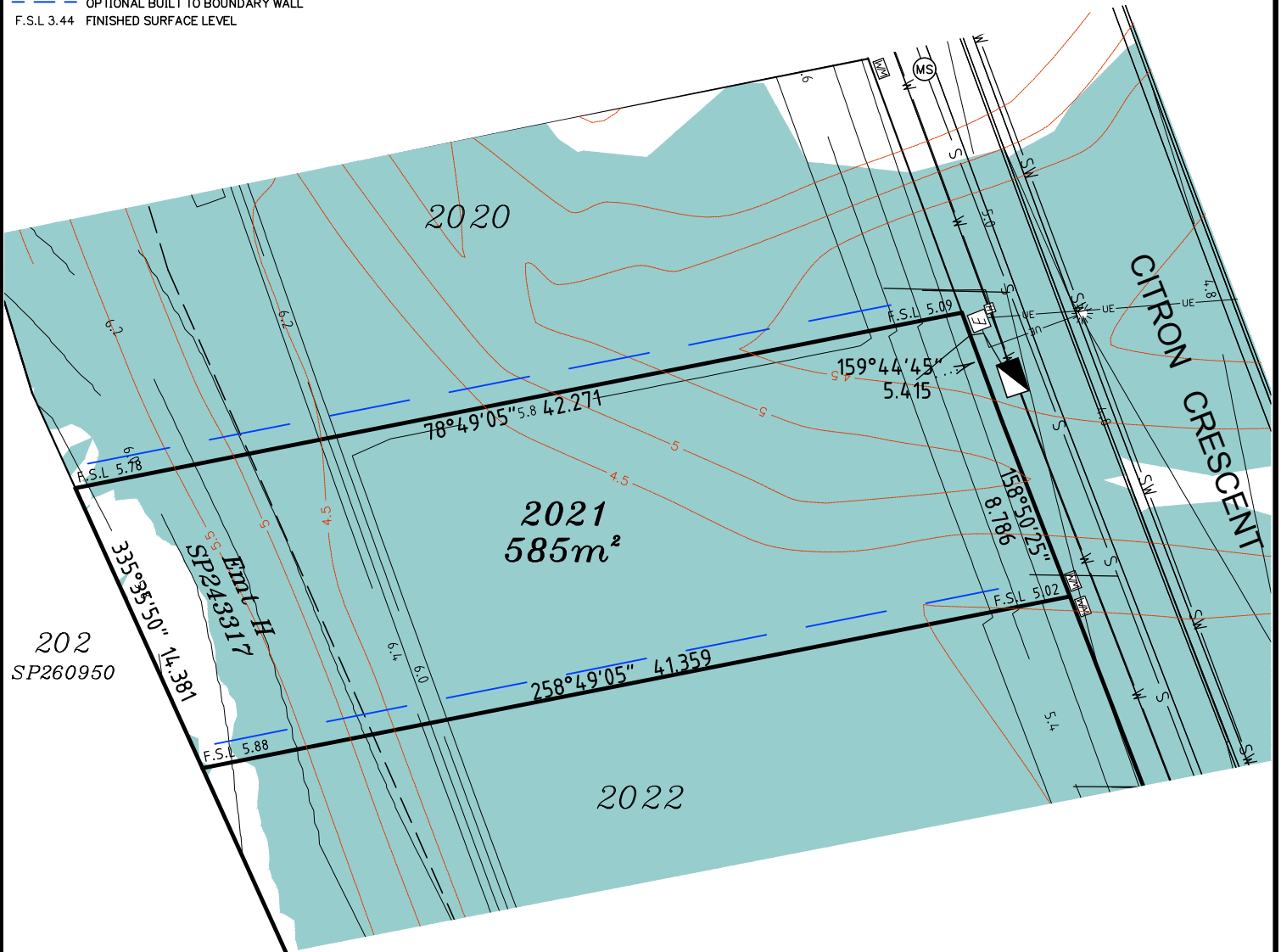


LEGEND

- ⊙ . . . SEWER MANHOLE
- ⊙ . . . SEWER MAINTENANCE SHAFT
- ⊙ . . . SEWER RISING MAIN
- ⊙ . . . STORMWATER MANHOLE
- ⊙ . . . GULLY TRAP
- ⊙ . . . WATER METER
- ⊙ . . . FIRE HYDRANT
- ⊙ . . . STOP VALVE
- ⊙ . . . ELECTRICITY PILLAR
- ⊙ . . . COMMS PIT
- ⊙ . . . LIGHT POLE
- — — EXISTING SURFACE CONTOURS
- — — DESIGN CONTOURS
- █ . . . DESIGN FILL
- S—S— SEWERAGE
- SW—SW— STORMWATER
- W—W— WATER PIPE
- UE—UE— UNDERGROUND ELECTRICITY
- — — OPTIONAL BUILT TO BOUNDARY WALL
- F.S.L 3.44 FINISHED SURFACE LEVEL

Notes:

- Final areas are subject to design changes, Council approval and field survey and may differ from those shown on this Disclosure Plan.
- Final presentation of areas will comply with requirements of the Registrar of Titles and may vary from the format on this Disclosure Plan
- "The Seller is entitled to make a Permitted Variation (as defined in Special Condition 3 of the contract) to the lot including its location, area, size, dimensions and elevation".
- Design contours are approximate only and may change during construction
- Services have been plotted from design information only and may change during construction
- All earthworks fill to lots has been placed and compacted on Level 1 basis in accordance with Australian Standard AS3798-2007 "Guidelines on earthworks for commercial and residential developments".



Scale 1:300 - Lengths are in Metres.



**gassman
development
perspectives**
est 1985
planning | environment | landscape | engineering | survey
T: 3807 3333 | F: 3287 5461 | www.gassman.com.au
Gold Coast & Logan | 76 Business Street, Yatala QLD | PO Box 392, Beenleigh 4207

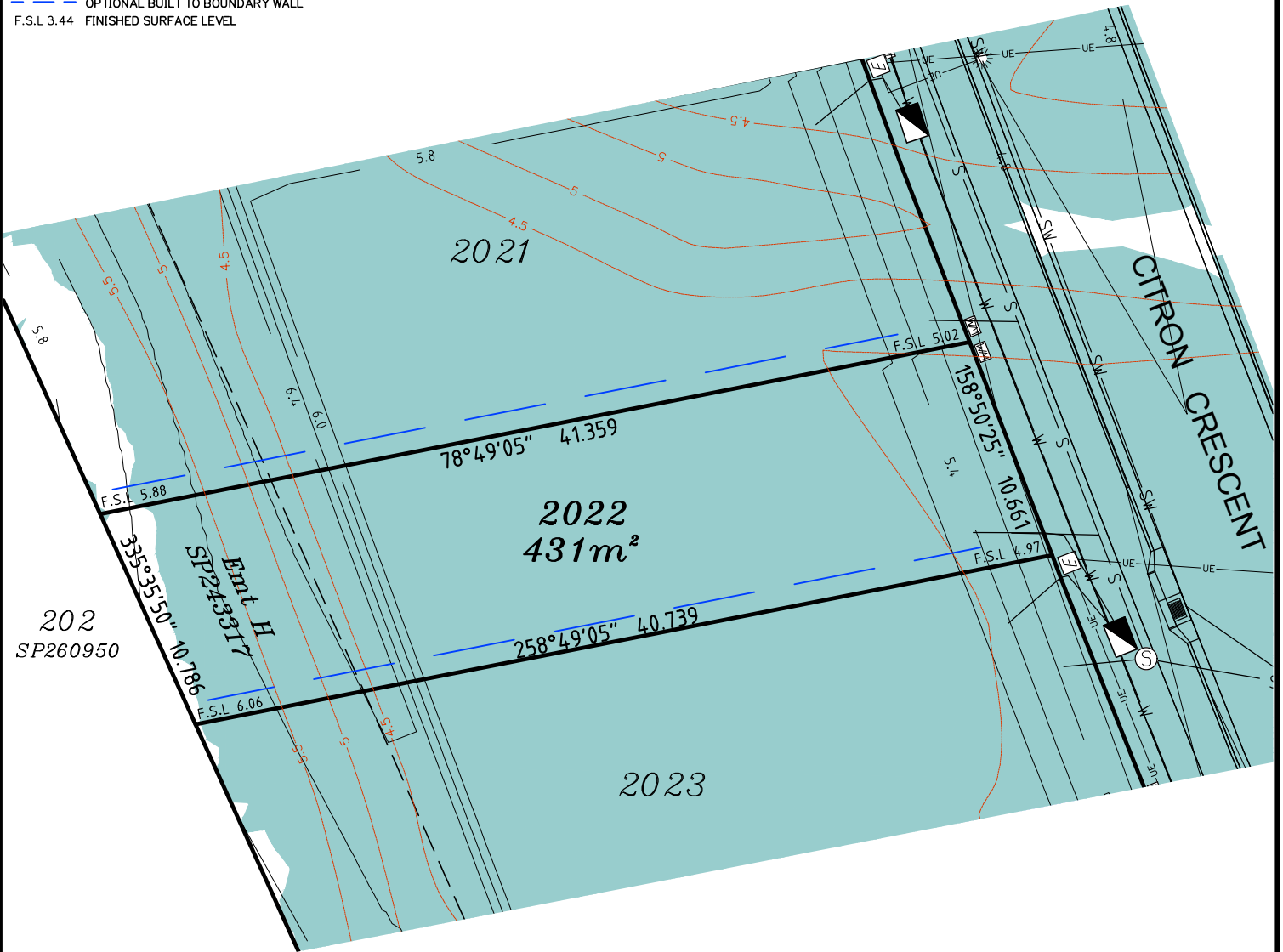
Client	Helensvale Nominee Pty Ltd
Project	DISCLOSURE PLAN LOT 2021 (Survey plan: SP280875) THE SURROUNDS Country Club Drive Helensvale
Real Property Description:	Lot 960 on SP280855

Issue Date	05/04/2018
Meridian	SP280875
Level Datum	AHD
Contour Interval	0.5m Existing 0.2m Design
Drawn	NDB
Date Drafted	05/02/2018
Checked	JD
REFERENCE No.	5408-14-STG 2D
PLAN No.	5408 S DC LOT 2021

LEGEND

- ⊙ . . . SEWER MANHOLE
- ⊙ . . . SEWER MAINTENANCE SHAFT
- ⊙ . . . SEWER RISING MAIN
- ⊙ . . . STORMWATER MANHOLE
- ⊙ . . . GULLY TRAP
- ⊙ . . . WATER METER
- ⊙ . . . FIRE HYDRANT
- ⊙ . . . STOP VALVE
- ⊙ . . . ELECTRICITY PILLAR
- ⊙ . . . COMMS PIT
- ⊙ . . . LIGHT POLE
- — — EXISTING SURFACE CONTOURS
- — — DESIGN CONTOURS
- █ . . . DESIGN FILL
- S—S— SEWERAGE
- SW—SW— STORMWATER
- W—W— WATER PIPE
- UE—UE— UNDERGROUND ELECTRICITY
- — — OPTIONAL BUILT TO BOUNDARY WALL
- F.S.L 3.44 FINISHED SURFACE LEVEL

- Notes:**
- Final areas are subject to design changes, Council approval and field survey and may differ from those shown on this Disclosure Plan.
 - Final presentation of areas will comply with requirements of the Registrar of Titles and may vary from the format on this Disclosure Plan
 - "The Seller is entitled to make a Permitted Variation (as defined in Special Condition 3 of the contract) to the lot including its location, area, size, dimensions and elevation".
 - Design contours are approximate only and may change during construction
 - Services have been plotted from design information only and may change during construction
 - All earthworks fill to lots has been placed and compacted on Level 1 basis in accordance with Australian Standard AS3798-2007 "Guidelines on earthworks for commercial and residential developments".



Scale 1:300 - Lengths are in Metres.



gassman development perspectives
 est 1985
 planning | environment | landscape | engineering | survey
 T: 3807 3333 | F: 3287 5461 | www.gassman.com.au
 Gold Coast & Logan | 176 Business Street, Yatala QLD | PO Box 392, Beenleigh 4207

Client	Helensvale Nominee Pty Ltd
Project	DISCLOSURE PLAN LOT 2022 (Survey plan: SP280875) THE SURROUNDS Country Club Drive Helensvale
Real Property Description:	Lot 960 on SP280855

Locality	HELENSVALE	Issue Date	05/04/2018
Local Govt	GOLD COAST CITY COUNCIL	Meridian	SP280875
Scale (on A4 original)	1:300	Level Datum	AHD
		Contour Interval	0.5m Existing 0.2m Design
		Drawn	NDB
		Date Drafted	05/02/2018
		Checked	JD

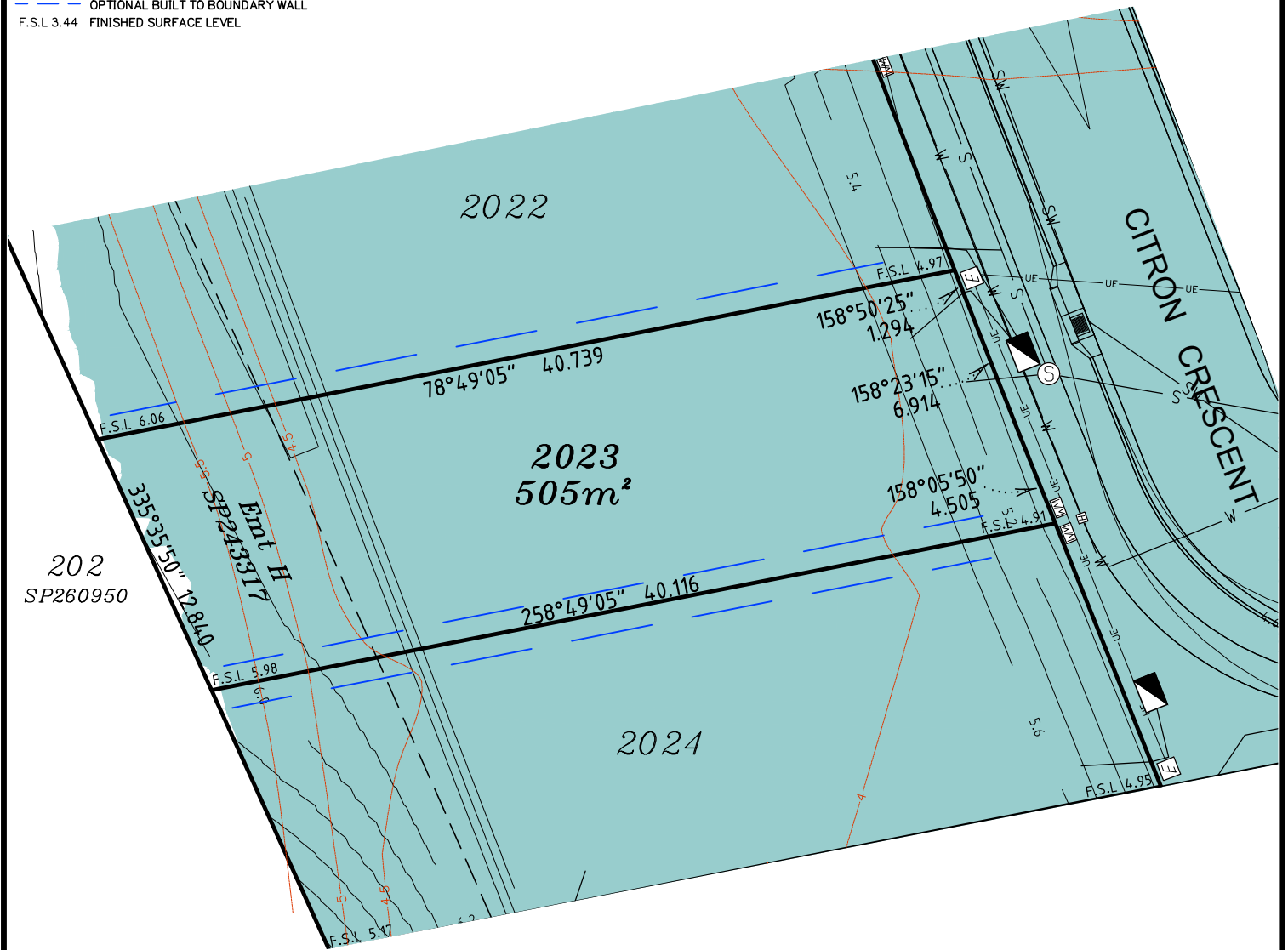
REFERENCE No. 5408-14-STG 2D
PLAN No. 5408 S DC LOT 2022

LEGEND

- ⊙ . . . SEWER MANHOLE
- ⊙ . . . SEWER MAINTENANCE SHAFT
- ⊙ . . . SEWER RISING MAIN
- ⊙ . . . STORMWATER MANHOLE
- ⊙ . . . GULLY TRAP
- ⊙ . . . WATER METER
- ⊙ . . . FIRE HYDRANT
- ⊙ . . . STOP VALVE
- ⊙ . . . ELECTRICITY PILLAR
- ⊙ . . . COMMS PIT
- ⊙ . . . LIGHT POLE
- — — EXISTING SURFACE CONTOURS
- — — DESIGN CONTOURS
- █ . . . DESIGN FILL
- S—S— SEWERAGE
- SW—SW— STORMWATER
- W—W— WATER PIPE
- UE—UE— UNDERGROUND ELECTRICITY
- — — OPTIONAL BUILT TO BOUNDARY WALL
- F.S.L 3.44 FINISHED SURFACE LEVEL

Notes:

- Final areas are subject to design changes, Council approval and field survey and may differ from those shown on this Disclosure Plan.
- Final presentation of areas will comply with requirements of the Registrar of Titles and may vary from the format on this Disclosure Plan
- "The Seller is entitled to make a Permitted Variation (as defined in Special Condition 3 of the contract) to the lot including its location, area, size, dimensions and elevation".
- Design contours are approximate only and may change during construction
- Services have been plotted from design information only and may change during construction
- All earthworks fill to lots has been placed and compacted on Level 1 basis in accordance with Australian Standard AS3798-2007 "Guidelines on earthworks for commercial and residential developments".



Scale 1:300 - Lengths are in Metres.



**gassman
development
perspectives**
est 1985
planning | environment | landscape | engineering | survey
T: 3807 3333 | F: 3287 5461 | www.gassman.com.au
Gold Coast & Logan | 176 Business Street, Yatala QLD | PO Box 392, Beenleigh 4207

Client	Helensvale Nominee Pty Ltd
Project	DISCLOSURE PLAN LOT 2023 (Survey plan: SP280875) THE SURROUNDS Country Club Drive Helensvale
Real Property Description:	Lot 960 on SP280855

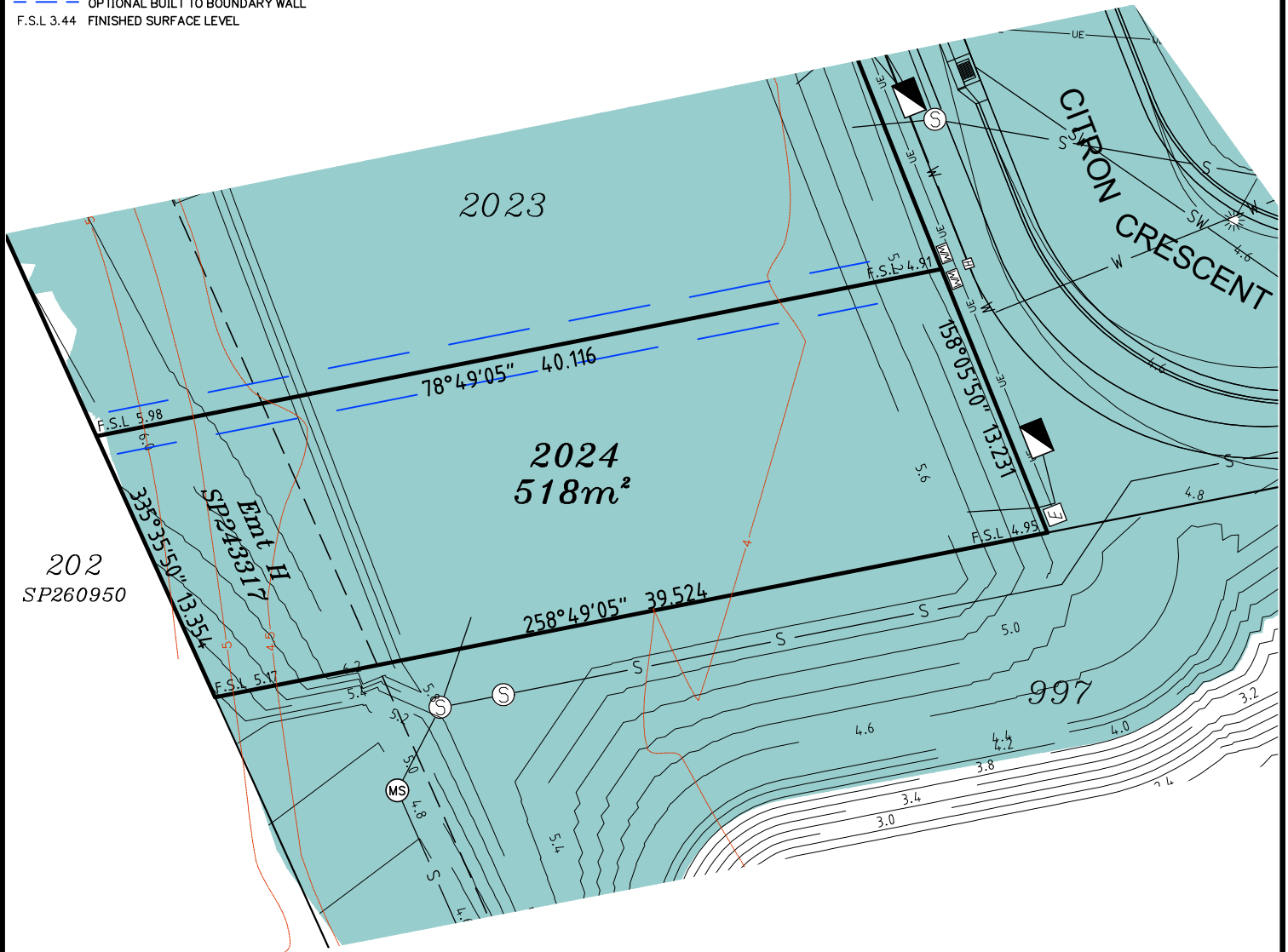
Locality	HELENSVALE	Issue Date	05/04/2018
Local Govt	GOLD COAST CITY COUNCIL	Meridian	SP280875
Scale (on A4 original)	1:300	Level Datum	AHD
		Contour Interval	0.5m Existing 0.2m Design
		Drawn	NDB
		Date Drafted	05/02/2018
		Checked	JD
REFERENCE No.	5408-14-STG 2D		
PLAN No.	5408 S DC LOT 2023		

LEGEND

- ⊙ . . . SEWER MANHOLE
- ⊙ . . . SEWER MAINTENANCE SHAFT
- ⊙ . . . SEWER RISING MAIN
- ⊙ . . . STORMWATER MANHOLE
- ⊙ . . . GULLY TRAP
- ⊙ . . . WATER METER
- ⊙ . . . FIRE HYDRANT
- ⊙ . . . STOP VALVE
- ⊙ . . . ELECTRICITY PILLAR
- ⊙ . . . COMMS PIT
- ⊙ . . . LIGHT POLE
- — — EXISTING SURFACE CONTOURS
- — — DESIGN CONTOURS
- █ . . . DESIGN FILL
- S—S— SEWERAGE
- SW—SW— STORMWATER
- W—W— WATER PIPE
- UE—UE— UNDERGROUND ELECTRICITY
- — — OPTIONAL BUILT TO BOUNDARY WALL
- F.S.L 3.44 FINISHED SURFACE LEVEL

Notes:

- Final areas are subject to design changes, Council approval and field survey and may differ from those shown on this Disclosure Plan.
- Final presentation of areas will comply with requirements of the Registrar of Titles and may vary from the format on this Disclosure Plan
- "The Seller is entitled to make a Permitted Variation (as defined in Special Condition 3 of the contract) to the lot including its location, area, size, dimensions and elevation".
- Design contours are approximate only and may change during construction
- Services have been plotted from design information only and may change during construction
- All earthworks fill to lots has been placed and compacted on Level 1 basis in accordance with Australian Standard AS3798-2007 "Guidelines on earthworks for commercial and residential developments".



Scale 1:300 - Lengths are in Metres.



gassman
development
perspectives

est 1985

planning | environment | landscape | engineering | survey

T: 3807 3333 | F: 3287 5461 | www.gassman.com.au

Gold Coast & Logan | 76 Business Street, Yatala QLD | PO Box 392, Beenleigh 4207

Client	Helensvale Nominee Pty Ltd
Project	DISCLOSURE PLAN LOT 2024 (Survey plan: SP280875) THE SURROUNDS Country Club Drive Helensvale
Real Property Description:	Lot 960 on SP280855

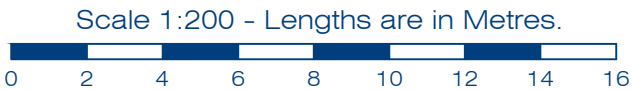
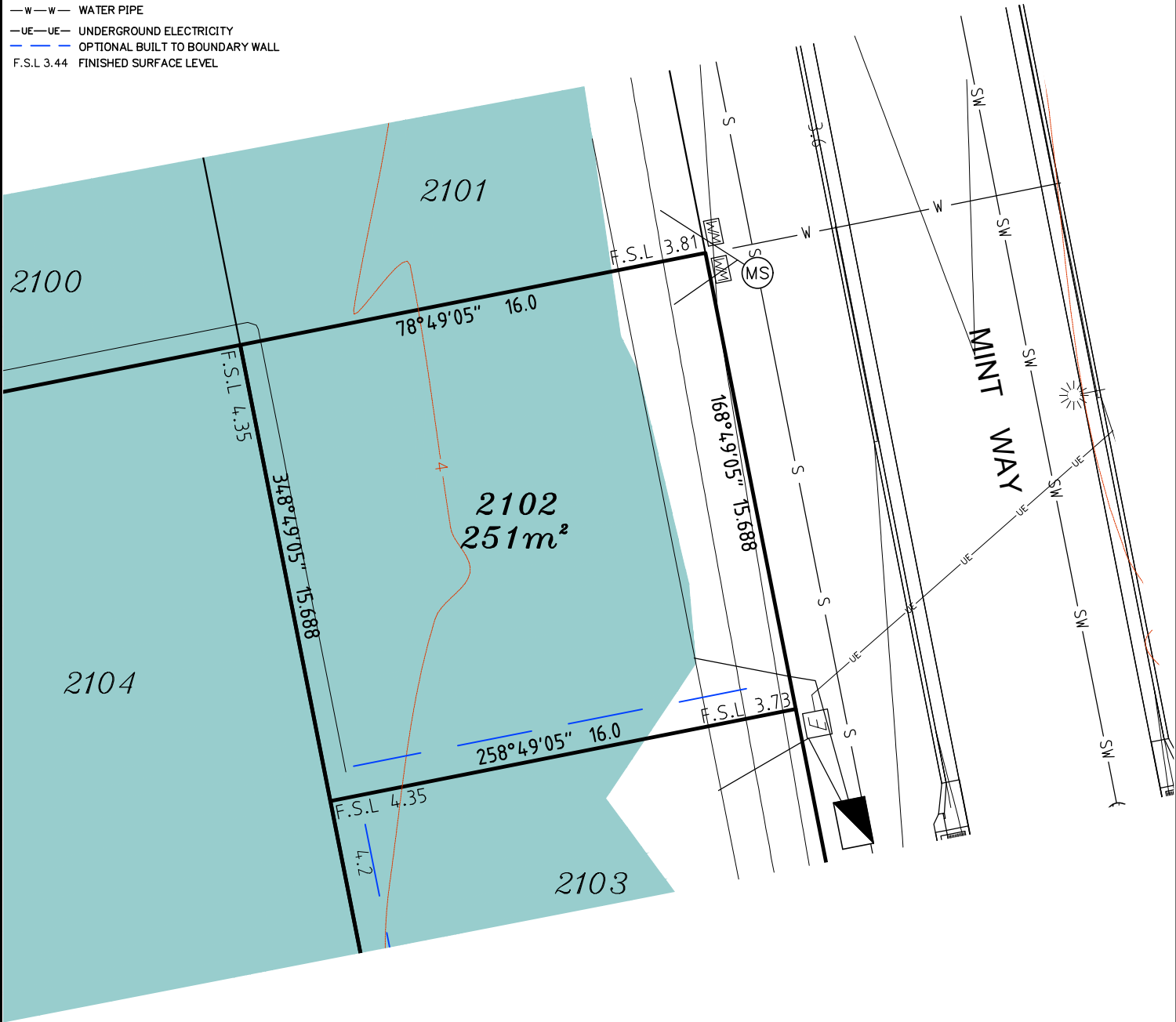
Issue Date	05/04/2018
Meridian	SP280875
Level Datum	AHD
Contour Interval	0.5m Existing 0.2m Design
Drawn	NDB
Date Drafted	05/02/2018
Checked	JD
REFERENCE No.	5408-14-STG 2D
PLAN No.	5408 S DC LOT 2024

LEGEND

- ⊙ . . . SEWER MANHOLE
- ⊙-RM . . . SEWER MAINTENANCE SHAFT
- ⊙-RM . . . SEWER RISING MAIN
- ⊙ . . . STORMWATER MANHOLE
- ⊙ . . . GULLY TRAP
- ⊙ . . . WATER METER
- ⊙ . . . FIRE HYDRANT
- ⊙ . . . STOP VALVE
- ⊙ . . . ELECTRICITY PILLAR
- ⊙ . . . COMMS PIT
- ⊙ . . . LIGHT POLE
- — — EXISTING SURFACE CONTOURS
- — — DESIGN CONTOURS
- — — DESIGN FILL
- S—S— SEWERAGE
- SW—SW— STORMWATER
- W—W— WATER PIPE
- UE—UE— UNDERGROUND ELECTRICITY
- — — OPTIONAL BUILT TO BOUNDARY WALL
- F.S.L 3.44 FINISHED SURFACE LEVEL

Notes:

- Final areas are subject to design changes, Council approval and field survey and may differ from those shown on this Disclosure Plan.
- Final presentation of areas will comply with requirements of the Registrar of Titles and may vary from the format on this Disclosure Plan
- "The Seller is entitled to make a Permitted Variation (as defined in Special Condition 3 of the contract) to the lot including its location, area, size, dimensions and elevation".
- Design contours are approximate only and may change during construction
- Services have been plotted from design information only and may change during construction
- All earthworks fill to lots has been placed and compacted on Level 1 basis in accordance with Australian Standard AS3798-2007 "Guidelines on earthworks for commercial and residential developments".



**gassman
development
perspectives**

est 1985

planning | environment | landscape | engineering | survey

T: 3807 3333 | F: 3287 5461 | www.gassman.com.au

Gold Coast & Logan | 176 Business Street, Yatala QLD | PO Box 392, Beenleigh 4207

Client	Helensvale Nominee Pty Ltd
Project	DISCLOSURE PLAN LOT 2102 (Survey plan: SP280875) THE SURROUNDS Country Club Drive Helensvale

Locality	HELENSVALE	Issue Date	05/04/2018
Local Govt	GOLD COAST CITY COUNCIL	Meridian	SP280875
Scale (on A4 original)	1:200	Level Datum	AHD
		Contour Interval	0.5m Existing 0.2m Design
		Drawn	NDB
		Date Drafted	05/02/2018
		Checked	JD

Real Property Description:
Lot 960 on SP280855

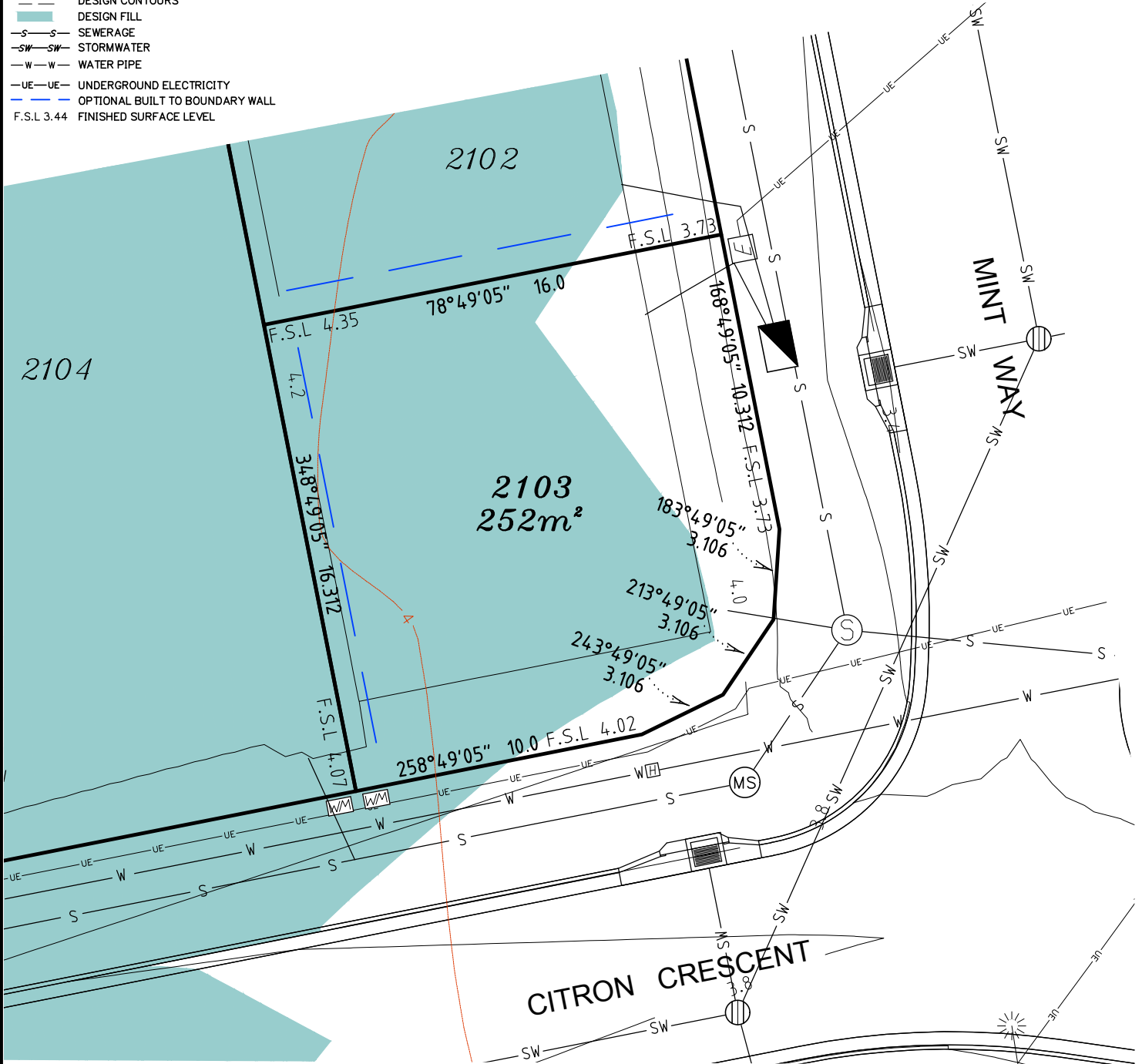
REFERENCE No. 5408-14-STG 2D
PLAN No. 5408 S DC LOT 2102

LEGEND

- ⊙ . . . SEWER MANHOLE
- ⊙ . . . SEWER MAINTENANCE SHAFT
- ⊙ . . . RM SEWER RISING MAIN
- ⊙ . . . STORMWATER MANHOLE
- ⊙ . . . GULLY TRAP
- ⊙ . . . WATER METER
- ⊙ . . . FIRE HYDRANT
- ⊙ . . . STOP VALVE
- ⊙ . . . ELECTRICITY PILLAR
- ⊙ . . . COMMS PIT
- ⊙ . . . LIGHT POLE
- — — EXISTING SURFACE CONTOURS
- — — DESIGN CONTOURS
- █ . . . DESIGN FILL
- S—S— SEWERAGE
- SW—SW— STORMWATER
- W—W— WATER PIPE
- UE—UE— UNDERGROUND ELECTRICITY
- — — OPTIONAL BUILT TO BOUNDARY WALL
- F.S.L 3.44 FINISHED SURFACE LEVEL

Notes:

- Final areas are subject to design changes, Council approval and field survey and may differ from those shown on this Disclosure Plan.
- Final presentation of areas will comply with requirements of the Registrar of Titles and may vary from the format on this Disclosure Plan
- "The Seller is entitled to make a Permitted Variation (as defined in Special Condition 3 of the contract) to the lot including its location, area, size, dimensions and elevation".
- Design contours are approximate only and may change during construction
- Services have been plotted from design information only and may change during construction
- All earthworks fill to lots has been placed and compacted on Level 1 basis in accordance with Australian Standard AS3798-2007 "Guidelines on earthworks for commercial and residential developments".



Scale 1:200 - Lengths are in Metres.



**gassman
development
perspectives**

planning | environment | landscape | engineering | survey

T: 3807 3333 | F: 3287 5461 | www.gassman.com.au

Gold Coast & Logan | 76 Business Street, Yatala QLD | PO Box 392, Beenleigh 4207

Client	Helensvale Nominee Pty Ltd
Project	DISCLOSURE PLAN LOT 2103 (Survey plan: SP280875) THE SURROUNDS Country Club Drive Helensvale

Locality	HELENSVALE	Issue Date	05/04/2018
Local Govt	GOLD COAST CITY COUNCIL	Meridian	SP280875
Scale (on A4 original)	1:200	Level Datum	AHD
		Contour Interval	0.5m Existing 0.2m Design
		Drawn	NDB
		Date Drafted	05/02/2018
		Checked	JD

Real Property Description:
Lot 960 on SP280855

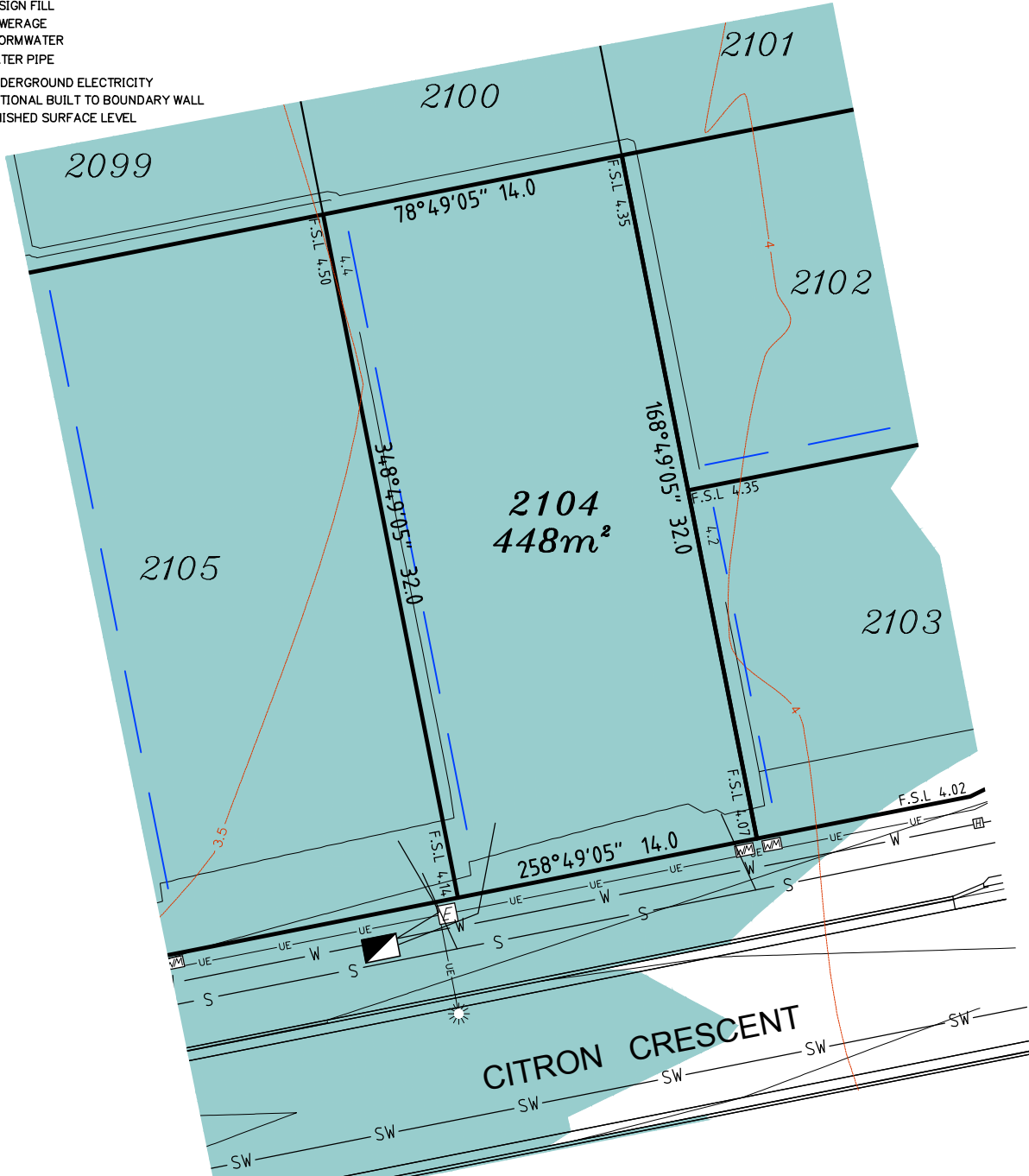
REFERENCE No. 5408-14-STG 2D
PLAN No. 5408 S DC LOT 2103

LEGEND

- ⊙ . . . SEWER MANHOLE
- ⊕ . . . SEWER MAINTENANCE SHAFT
- ⊕^{RM} . . . SEWER RISING MAIN
- ⊕ . . . STORMWATER MANHOLE
- ⊕ . . . GULLY TRAP
- ⊕ . . . WATER METER
- ⊕ . . . FIRE HYDRANT
- ⊕ . . . STOP VALVE
- ⊕ . . . ELECTRICITY PILLAR
- ⊕ . . . COMMS PIT
- ⊕ . . . LIGHT POLE
- — — EXISTING SURFACE CONTOURS
- — — DESIGN CONTOURS
- — — DESIGN FILL
- S—S— SEWERAGE
- SW—SW— STORMWATER
- W—W— WATER PIPE
- UE—UE— UNDERGROUND ELECTRICITY
- — — OPTIONAL BUILT TO BOUNDARY WALL
- F.S.L 3.44 FINISHED SURFACE LEVEL

Notes:

- Final areas are subject to design changes, Council approval and field survey and may differ from those shown on this Disclosure Plan.
- Final presentation of areas will comply with requirements of the Registrar of Titles and may vary from the format on this Disclosure Plan
- "The Seller is entitled to make a Permitted Variation (as defined in Special Condition 3 of the contract) to the lot including its location, area, size, dimensions and elevation".
- Design contours are approximate only and may change during construction
- Services have been plotted from design information only and may change during construction
- All earthworks fill to lots has been placed and compacted on Level 1 basis in accordance with Australian Standard AS3798-2007 "Guidelines on earthworks for commercial and residential developments".



Scale 1:300 - Lengths are in Metres.



**gassman
development
perspectives**
est 1985
planning | environment | landscape | engineering | survey
T: 3807 3333 | F: 3287 5461 | www.gassman.com.au
Gold Coast & Logan | 76 Business Street, Yatala QLD | PO Box 392, Beenleigh 4207

Client	Helensvale Nominee Pty Ltd
Project	DISCLOSURE PLAN LOT 2104 (Survey plan: SP280875) THE SURROUNDS Country Club Drive Helensvale

Locality	HELENSVALE	Issue Date	05/04/2018
Local Govt	GOLD COAST CITY COUNCIL	Meridian	SP280875
Scale (on A4 original)	1:300	Level Datum	AHD
		Contour Interval	0.5m Existing 0.2m Design
		Drawn	NDB
		Date Drafted	05/02/2018
		Checked	JD

Real Property Description:
Lot 960 on SP280855

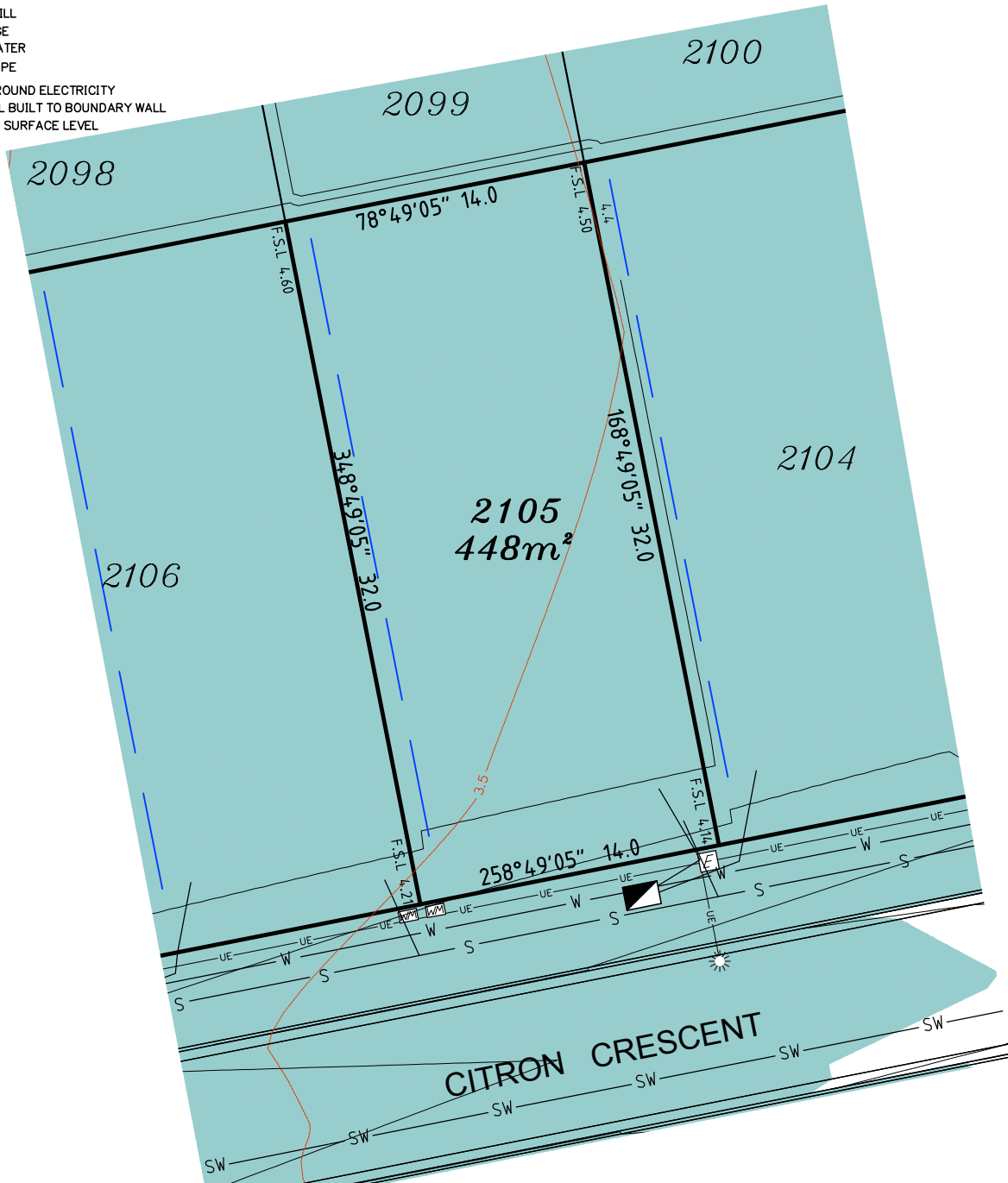
REFERENCE No. 5408-14-STG 2D
PLAN No. 5408 S DC LOT 2104

LEGEND

- ⊙ . . . SEWER MANHOLE
- ⊕ . . . SEWER MAINTENANCE SHAFT
- ⊕^{RM} . . . SEWER RISING MAIN
- ⊕ . . . STORMWATER MANHOLE
- ⊕ . . . GULLY TRAP
- ⊕ . . . WATER METER
- ⊕ . . . FIRE HYDRANT
- ⊕ . . . STOP VALVE
- ⊕ . . . ELECTRICITY PILLAR
- ⊕ . . . COMMS PIT
- ⊕ . . . LIGHT POLE
- — — EXISTING SURFACE CONTOURS
- — — DESIGN CONTOURS
- — — DESIGN FILL
- S—S— SEWERAGE
- SW—SW— STORMWATER
- W—W— WATER PIPE
- UE—UE— UNDERGROUND ELECTRICITY
- — — OPTIONAL BUILT TO BOUNDARY WALL
- F.S.L 3.44 FINISHED SURFACE LEVEL

Notes:

- Final areas are subject to design changes, Council approval and field survey and may differ from those shown on this Disclosure Plan.
- Final presentation of areas will comply with requirements of the Registrar of Titles and may vary from the format on this Disclosure Plan
- "The Seller is entitled to make a Permitted Variation (as defined in Special Condition 3 of the contract) to the lot including its location, area, size, dimensions and elevation".
- Design contours are approximate only and may change during construction
- Services have been plotted from design information only and may change during construction
- All earthworks fill to lots has been placed and compacted on Level 1 basis in accordance with Australian Standard AS3798-2007 "Guidelines on earthworks for commercial and residential developments".



Scale 1:300 - Lengths are in Metres.



**gassman
development
perspectives**
est 1985

planning | environment | landscape | engineering | survey

T: 3807 3333 | F: 3287 5461 | www.gassman.com.au

Gold Coast & Logan | 76 Business Street, Yatala QLD | PO Box 392, Beenleigh 4207

Client	Helensvale Nominee Pty Ltd
Project	DISCLOSURE PLAN LOT 2105 (Survey plan: SP280875) THE SURROUNDS Country Club Drive Helensvale
Real Property Description:	Lot 960 on SP280855

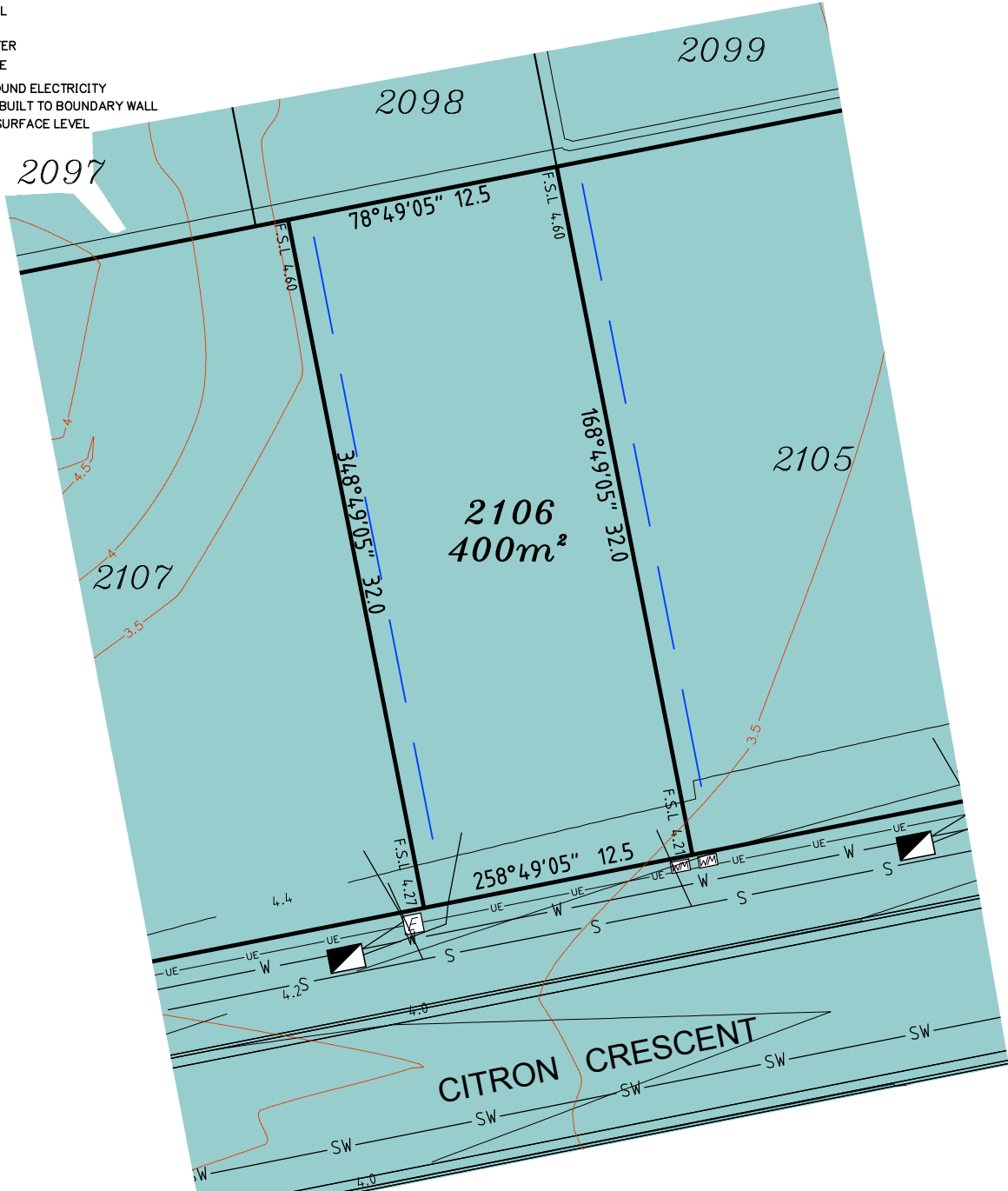
Locality	HELENSVALE	Issue Date	05/04/2018
Local Govt	GOLD COAST CITY COUNCIL	Meridian	SP280875
Scale (on A4 original)	1:300	Level Datum	AHD
		Contour Interval	0.5m Existing 0.2m Design
		Drawn	NDB
		Date Drafted	05/02/2018
		Checked	JD
REFERENCE No. 5408-14-STG 2D		PLAN No. 5408 S DC LOT 2105	

LEGEND

- ⊙ . . . SEWER MANHOLE
- ⊙-RM . . . SEWER MAINTENANCE SHAFT
- ⊙-RM . . . SEWER RISING MAIN
- ⊙ . . . STORMWATER MANHOLE
- ⊙ . . . GULLY TRAP
- ⊙ . . . WATER METER
- ⊙ . . . FIRE HYDRANT
- ⊙ . . . STOP VALVE
- ⊙ . . . ELECTRICITY PILLAR
- ⊙ . . . COMMS PIT
- ⊙ . . . LIGHT POLE
- . . . EXISTING SURFACE CONTOURS
- . . . DESIGN CONTOURS
- . . . DESIGN FILL
- S—S— . . . SEWERAGE
- SW—SW— . . . STORMWATER
- W—W— . . . WATER PIPE
- UE—UE— . . . UNDERGROUND ELECTRICITY
- . . . OPTIONAL BUILT TO BOUNDARY WALL
- F.S.L 3.44 . . . FINISHED SURFACE LEVEL

Notes:

- Final areas are subject to design changes, Council approval and field survey and may differ from those shown on this Disclosure Plan.
- Final presentation of areas will comply with requirements of the Registrar of Titles and may vary from the format on this Disclosure Plan
- "The Seller is entitled to make a Permitted Variation (as defined in Special Condition 3 of the contract) to the lot including its location, area, size, dimensions and elevation".
- Design contours are approximate only and may change during construction
- Services have been plotted from design information only and may change during construction
- All earthworks fill to lots has been placed and compacted on Level 1 basis in accordance with Australian Standard AS3798-2007 "Guidelines on earthworks for commercial and residential developments".



Scale 1:300 - Lengths are in Metres.



T: 3807 3333 | F: 3287 5461 | www.gassman.com.au
 Gold Coast & Logan | 76 Business Street, Yatala QLD | PO Box 392, Beenleigh 4207

Client
 Helensvale Nominee Pty Ltd

Project
DISCLOSURE PLAN
LOT 2106
 (Survey plan: SP280875)
THE SURROUNDS
Country Club Drive Helensvale

Locality HELENSVALE
 Local Govt GOLD COAST CITY COUNCIL
 Scale (on A4 original) 1:300

Issue Date 05/04/2018
 Meridian SP280875
 Level Datum AHD
 Contour Interval 0.5m Existing
 0.2m Design
 Drawn NDB
 Date Drafted 05/02/2018
 Checked JD

Real Property Description:
 Lot 960 on SP280855

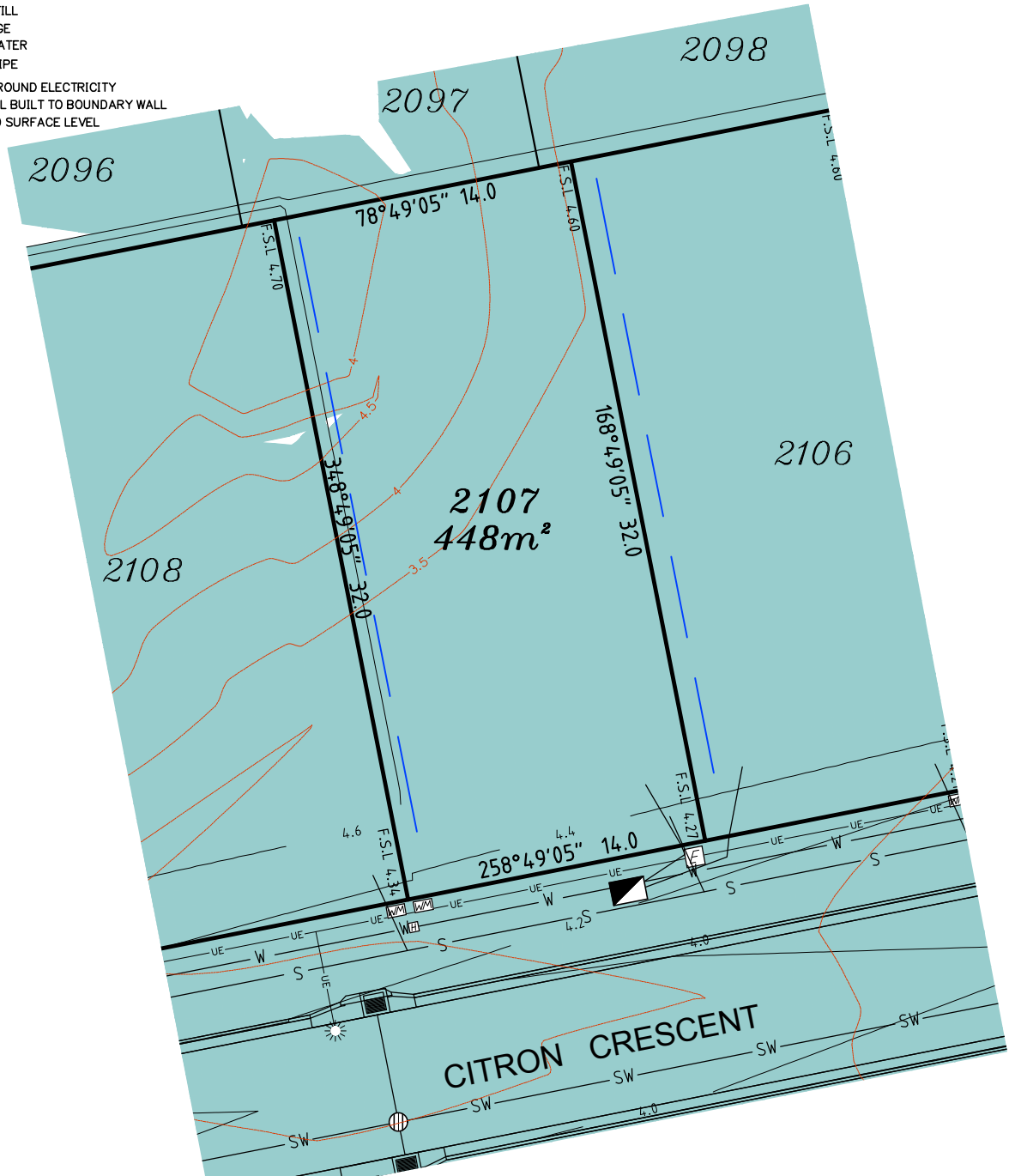
REFERENCE No. 5408-14-STG 2D
PLAN No. 5408 S DC LOT 2106

LEGEND

- ⊙ . . . SEWER MANHOLE
- ⊕ . . . SEWER MAINTENANCE SHAFT
- ⊕ . . . SEWER RISING MAIN
- ⊕ . . . STORMWATER MANHOLE
- ⊕ . . . GULLY TRAP
- ⊕ . . . WATER METER
- ⊕ . . . FIRE HYDRANT
- ⊕ . . . STOP VALVE
- ⊕ . . . ELECTRICITY PILLAR
- ⊕ . . . COMMS PIT
- ⊕ . . . LIGHT POLE
- — — EXISTING SURFACE CONTOURS
- — — DESIGN CONTOURS
- — — DESIGN FILL
- S—S— SEWERAGE
- SW—SW— STORMWATER
- W—W— WATER PIPE
- UE—UE— UNDERGROUND ELECTRICITY
- — — OPTIONAL BUILT TO BOUNDARY WALL
- F.S.L 3.44 FINISHED SURFACE LEVEL

Notes:

- Final areas are subject to design changes, Council approval and field survey and may differ from those shown on this Disclosure Plan.
- Final presentation of areas will comply with requirements of the Registrar of Titles and may vary from the format on this Disclosure Plan
- "The Seller is entitled to make a Permitted Variation (as defined in Special Condition 3 of the contract) to the lot including its location, area, size, dimensions and elevation".
- Design contours are approximate only and may change during construction
- Services have been plotted from design information only and may change during construction
- All earthworks fill to lots has been placed and compacted on Level 1 basis in accordance with Australian Standard AS3798-2007 "Guidelines on earthworks for commercial and residential developments".



Scale 1:300 - Lengths are in Metres.



**gassman
development
perspectives**
est 1985
planning | environment | landscape | engineering | survey
T: 3807 3333 | F: 3287 5461 | www.gassman.com.au
Gold Coast & Logan | 76 Business Street, Yatala QLD | PO Box 392, Beenleigh 4207

Client
Helensvale Nominee Pty Ltd

Project
DISCLOSURE PLAN
LOT 2107
(Survey plan: SP280875)
THE SURROUNDS
Country Club Drive Helensvale

Locality HELENSVALE
Local Govt GOLD COAST CITY COUNCIL
Scale (on A4 original) 1:300

Issue Date 05/04/2018
Meridian SP280875
Level Datum AHD
Contour Interval 0.5m Existing
0.2m Design
Drawn NDB
Date Drafted 05/02/2018
Checked JD

Real Property Description:
Lot 960 on SP280855

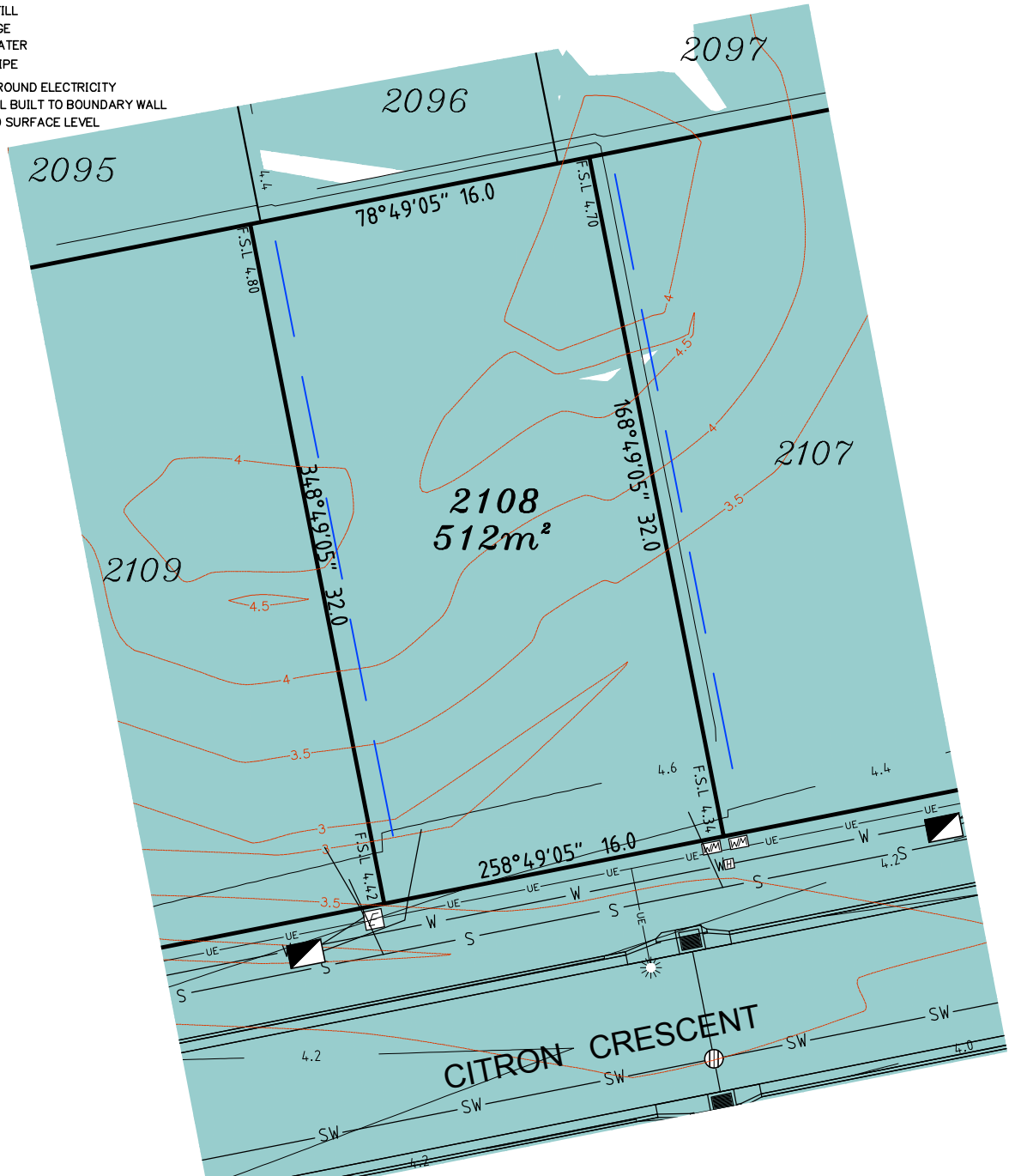
REFERENCE No. 5408-14-STG 2D
PLAN No. 5408 S DC LOT 2107

LEGEND

- ⊙ . . . SEWER MANHOLE
- ⊙-RM . . . SEWER MAINTENANCE SHAFT
- ⊙-RM . . . SEWER RISING MAIN
- ⊙ . . . STORMWATER MANHOLE
- ⊙ . . . GULLY TRAP
- ⊙ . . . WATER METER
- ⊙ . . . FIRE HYDRANT
- ⊙ . . . STOP VALVE
- ⊙ . . . ELECTRICITY PILLAR
- ⊙ . . . COMMS PIT
- ⊙ . . . LIGHT POLE
- — — EXISTING SURFACE CONTOURS
- — — DESIGN CONTOURS
- — — DESIGN FILL
- S—S— SEWERAGE
- SW—SW— STORMWATER
- W—W— WATER PIPE
- UE—UE— UNDERGROUND ELECTRICITY
- — — OPTIONAL BUILT TO BOUNDARY WALL
- F.S.L 3.44 FINISHED SURFACE LEVEL

Notes:

- Final areas are subject to design changes, Council approval and field survey and may differ from those shown on this Disclosure Plan.
- Final presentation of areas will comply with requirements of the Registrar of Titles and may vary from the format on this Disclosure Plan
- "The Seller is entitled to make a Permitted Variation (as defined in Special Condition 3 of the contract) to the lot including its location, area, size, dimensions and elevation".
- Design contours are approximate only and may change during construction
- Services have been plotted from design information only and may change during construction
- All earthworks fill to lots has been placed and compacted on Level 1 basis in accordance with Australian Standard AS3798-2007 "Guidelines on earthworks for commercial and residential developments".



Scale 1:300 - Lengths are in Metres.



gassman development perspectives
 est 1985
 planning | environment | landscape | engineering | survey
 T: 3807 3333 | F: 3287 5461 | www.gassman.com.au
 Gold Coast & Logan | 76 Business Street, Yatala QLD | PO Box 392, Beenleigh 4207

Client
 Helensvale Nominee Pty Ltd

Project
DISCLOSURE PLAN
LOT 2108
 (Survey plan: SP280875)
THE SURROUNDS
Country Club Drive Helensvale

Locality HELENSVALE
 Local Govt GOLD COAST CITY COUNCIL
 Scale (on A4 original) 1:300

Issue Date 05/04/2018
 Meridian SP280875
 Level Datum AHD
 Contour Interval 0.5m Existing
 0.2m Design
 Drawn NDB
 Date Drafted 05/02/2018
 Checked JD

Real Property Description:
 Lot 960 on SP280855

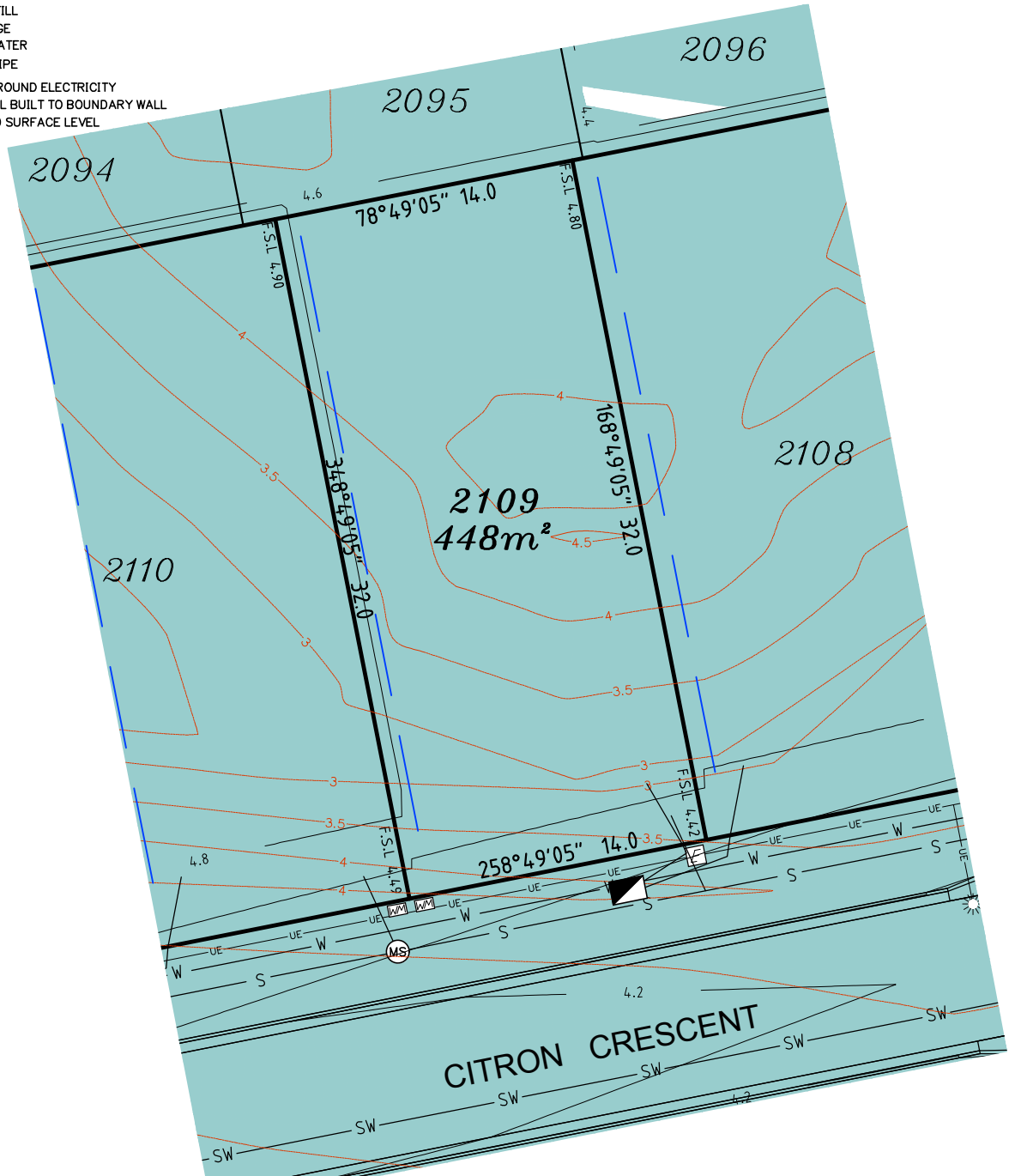
REFERENCE No. 5408-14-STG 2D
PLAN No. 5408 S DC LOT 2108

LEGEND

- ⊙ . . . SEWER MANHOLE
- ⊙-M . . . SEWER MAINTENANCE SHAFT
- ⊙-RM . . . SEWER RISING MAIN
- ⊙ . . . STORMWATER MANHOLE
- ⊙ . . . GULLY TRAP
- ⊙ . . . WATER METER
- ⊙ . . . FIRE HYDRANT
- ⊙ . . . STOP VALVE
- ⊙ . . . ELECTRICITY PILLAR
- ⊙ . . . COMMS PIT
- ⊙ . . . LIGHT POLE
- — — EXISTING SURFACE CONTOURS
- — — DESIGN CONTOURS
- — — DESIGN FILL
- S—S— SEWERAGE
- SW—SW— STORMWATER
- W—W— WATER PIPE
- UE—UE— UNDERGROUND ELECTRICITY
- — — OPTIONAL BUILT TO BOUNDARY WALL
- F.S.L 3.44 FINISHED SURFACE LEVEL

Notes:

- Final areas are subject to design changes, Council approval and field survey and may differ from those shown on this Disclosure Plan.
- Final presentation of areas will comply with requirements of the Registrar of Titles and may vary from the format on this Disclosure Plan
- "The Seller is entitled to make a Permitted Variation (as defined in Special Condition 3 of the contract) to the lot including its location, area, size, dimensions and elevation".
- Design contours are approximate only and may change during construction
- Services have been plotted from design information only and may change during construction
- All earthworks fill to lots has been placed and compacted on Level 1 basis in accordance with Australian Standard AS3798-2007 "Guidelines on earthworks for commercial and residential developments".



Scale 1:300 - Lengths are in Metres.



**gassman
development
perspectives**
est 1985

planning | environment | landscape | engineering | survey

T: 3807 3333 | F: 3287 5461 | www.gassman.com.au

Gold Coast & Logan | 76 Business Street, Yatala QLD | PO Box 392, Beenleigh 4207

Client	Helensvale Nominee Pty Ltd
Project	DISCLOSURE PLAN LOT 2109 (Survey plan: SP280875) THE SURROUNDS Country Club Drive Helensvale
Real Property Description:	Lot 960 on SP280855

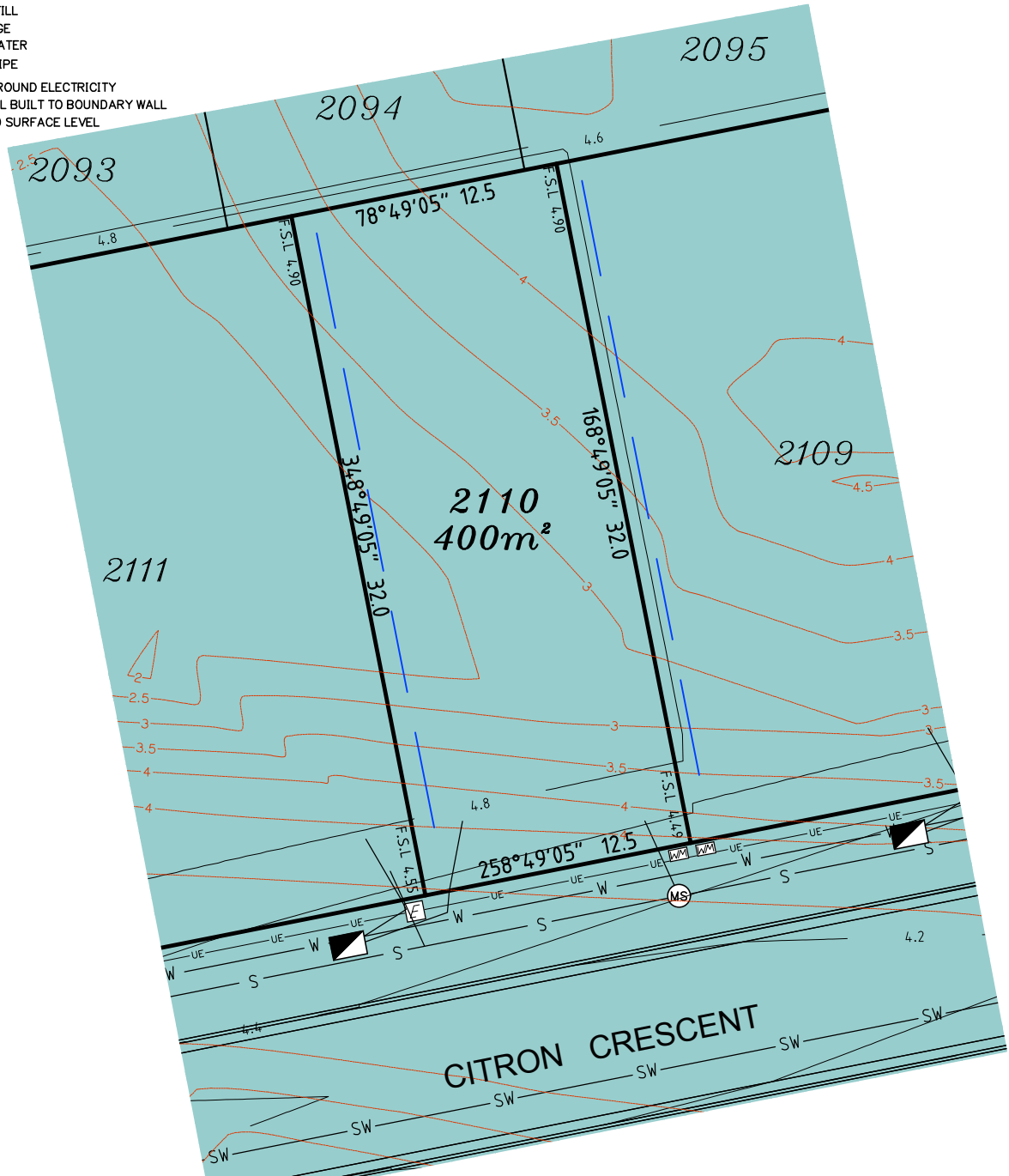
Locality	HELENSVALE	Issue Date	05/04/2018
Local Govt	GOLD COAST CITY COUNCIL	Meridian	SP280875
Scale (on A4 original)	1:300	Level Datum	AHD
		Contour Interval	0.5m Existing 0.2m Design
		Drawn	NDB
		Date Drafted	05/02/2018
		Checked	JD
REFERENCE No. 5408-14-STG 2D			
PLAN No. 5408 S DC LOT 2109			

LEGEND

- ⊙ . . . SEWER MANHOLE
- ⊙-RM . . . SEWER MAINTENANCE SHAFT
- ⊙-RM . . . SEWER RISING MAIN
- ⊙ . . . STORMWATER MANHOLE
- ⊙ . . . GULLY TRAP
- ⊙ . . . WATER METER
- ⊙ . . . FIRE HYDRANT
- ⊙ . . . STOP VALVE
- ⊙ . . . ELECTRICITY PILLAR
- ⊙ . . . COMMS PIT
- ⊙ . . . LIGHT POLE
- — — EXISTING SURFACE CONTOURS
- — — DESIGN CONTOURS
- — — DESIGN FILL
- S—S— SEWERAGE
- SW—SW— STORMWATER
- W—W— WATER PIPE
- UE—UE— UNDERGROUND ELECTRICITY
- — — OPTIONAL BUILT TO BOUNDARY WALL
- F.S.L 3.44 FINISHED SURFACE LEVEL

Notes:

- Final areas are subject to design changes, Council approval and field survey and may differ from those shown on this Disclosure Plan.
- Final presentation of areas will comply with requirements of the Registrar of Titles and may vary from the format on this Disclosure Plan
- "The Seller is entitled to make a Permitted Variation (as defined in Special Condition 3 of the contract) to the lot including its location, area, size, dimensions and elevation".
- Design contours are approximate only and may change during construction
- Services have been plotted from design information only and may change during construction
- All earthworks fill to lots has been placed and compacted on Level 1 basis in accordance with Australian Standard AS3798-2007 "Guidelines on earthworks for commercial and residential developments".



Scale 1:300 - Lengths are in Metres.



gassman development perspectives
 est 1985
 planning | environment | landscape | engineering | survey
 T: 3807 3333 | F: 3287 5461 | www.gassman.com.au
 Gold Coast & Logan | 76 Business Street, Yatala QLD | PO Box 392, Beenleigh 4207

Client
 Helensvale Nominee Pty Ltd

Project
DISCLOSURE PLAN
LOT 2110
 (Survey plan: SP280875)
THE SURROUNDS
Country Club Drive Helensvale

Locality HELENSVALE
 Local Govt GOLD COAST CITY COUNCIL
 Scale (on A4 original) 1:300

Issue Date 05/04/2018
 Meridian SP280875
 Level Datum AHD
 Contour Interval 0.5m Existing
 0.2m Design
 Drawn NDB
 Date Drafted 05/02/2018
 Checked JD

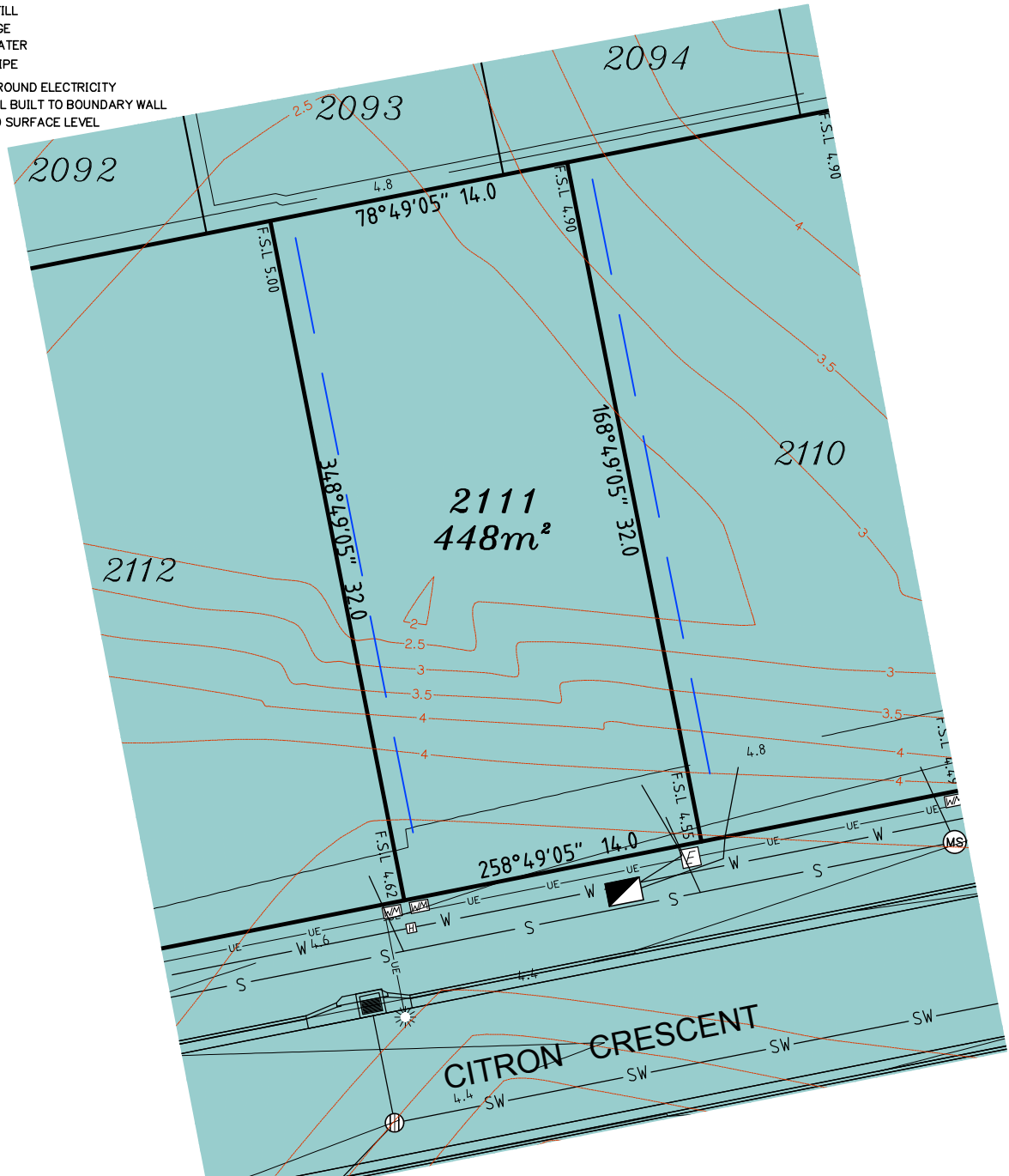
Real Property Description:
 Lot 960 on SP280855

REFERENCE No. 5408-14-STG 2D
PLAN No. 5408 S DC LOT 2110

LEGEND

- ⊙ . . . SEWER MANHOLE
- ⊙-RM . . . SEWER MAINTENANCE SHAFT
- ⊙-RM . . . SEWER RISING MAIN
- ⊙ . . . STORMWATER MANHOLE
- ⊙ . . . GULLY TRAP
- ⊙ . . . WATER METER
- ⊙ . . . FIRE HYDRANT
- ⊙ . . . STOP VALVE
- ⊙ . . . ELECTRICITY PILLAR
- ⊙ . . . COMMS PIT
- ⊙ . . . LIGHT POLE
- — — EXISTING SURFACE CONTOURS
- — — DESIGN CONTOURS
- — — DESIGN FILL
- S—S— SEWERAGE
- SW—SW— STORMWATER
- W—W— WATER PIPE
- UE—UE— UNDERGROUND ELECTRICITY
- — — OPTIONAL BUILT TO BOUNDARY WALL
- F.S.L 3.44 FINISHED SURFACE LEVEL

- Notes:**
- Final areas are subject to design changes, Council approval and field survey and may differ from those shown on this Disclosure Plan.
 - Final presentation of areas will comply with requirements of the Registrar of Titles and may vary from the format on this Disclosure Plan
 - "The Seller is entitled to make a Permitted Variation (as defined in Special Condition 3 of the contract) to the lot including its location, area, size, dimensions and elevation".
 - Design contours are approximate only and may change during construction
 - Services have been plotted from design information only and may change during construction
 - All earthworks fill to lots has been placed and compacted on Level 1 basis in accordance with Australian Standard AS3798-2007 "Guidelines on earthworks for commercial and residential developments".



Scale 1:300 - Lengths are in Metres.



**gassman
development
perspectives**
est 1985
planning | environment | landscape | engineering | survey
T: 3807 3333 | F: 3287 5461 | www.gassman.com.au
Gold Coast & Logan | 76 Business Street, Yatala QLD | PO Box 392, Beenleigh 4207

Client
Helensvale Nominee Pty Ltd

Project
DISCLOSURE PLAN
LOT 2111
(Survey plan: SP280875)
THE SURROUNDS
Country Club Drive Helensvale

Locality HELENSVALE
Local Govt GOLD COAST CITY COUNCIL
Scale (on A4 original) 1:300

Issue Date 05/04/2018
Meridian SP280875
Level Datum AHD
Contour Interval 0.5m Existing
0.2m Design
Drawn NDB
Date Drafted 05/02/2018
Checked JD

Real Property Description:
Lot 960 on SP280855

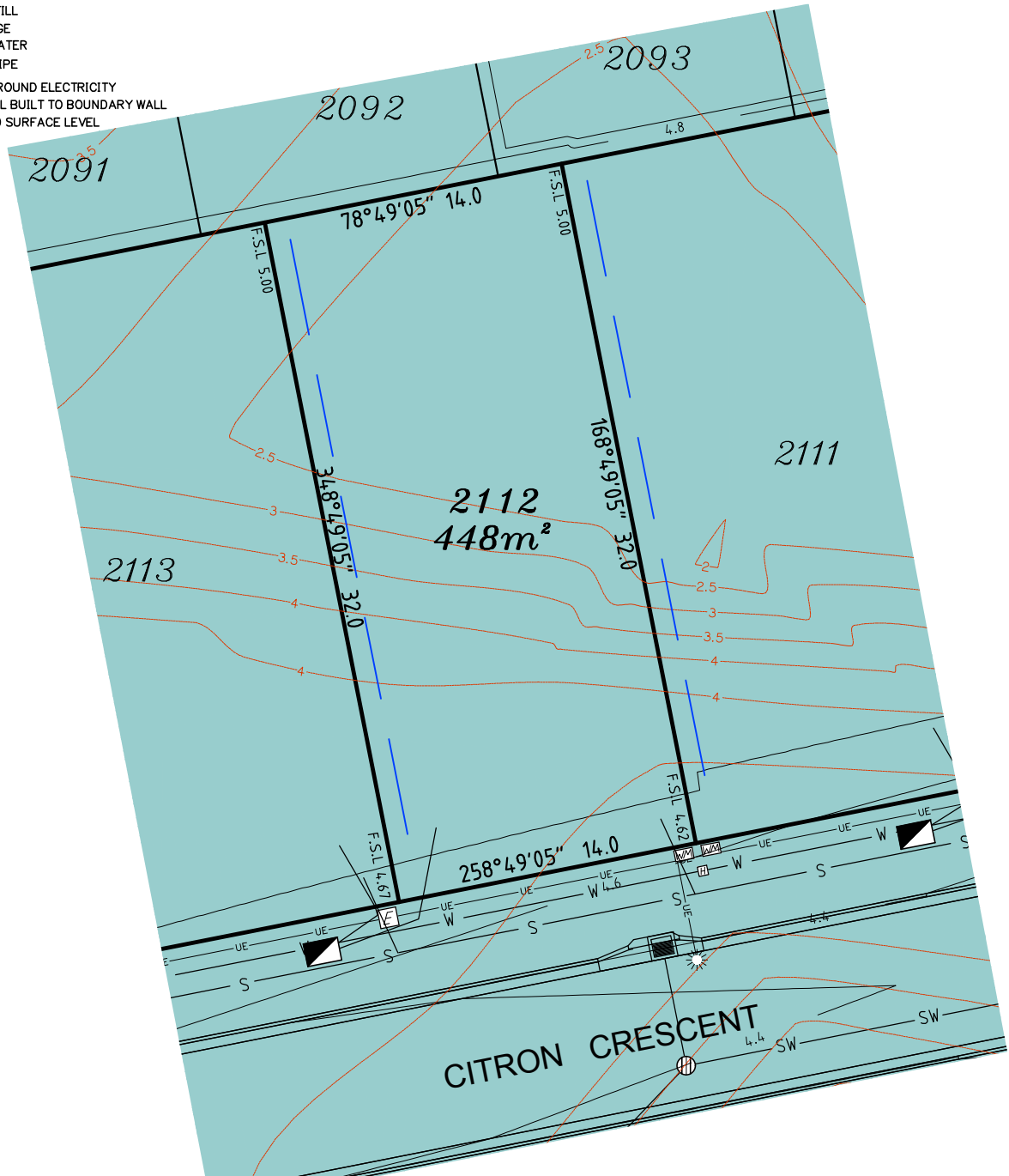
REFERENCE No. 5408-14-STG 2D
PLAN No. 5408 S DC LOT 2111

LEGEND

- ⊙ . . . SEWER MANHOLE
- ⊙ . . . SEWER MAINTENANCE SHAFT
- ⊙ . . . SEWER RISING MAIN
- ⊙ . . . STORMWATER MANHOLE
- ⊙ . . . GULLY TRAP
- ⊙ . . . WATER METER
- ⊙ . . . FIRE HYDRANT
- ⊙ . . . STOP VALVE
- ⊙ . . . ELECTRICITY PILLAR
- ⊙ . . . COMMS PIT
- ⊙ . . . LIGHT POLE
- — — EXISTING SURFACE CONTOURS
- — — DESIGN CONTOURS
- — — DESIGN FILL
- S—S— SEWERAGE
- SW—SW— STORMWATER
- W—W— WATER PIPE
- UE—UE— UNDERGROUND ELECTRICITY
- — — OPTIONAL BUILT TO BOUNDARY WALL
- F.S.L 3.44 FINISHED SURFACE LEVEL

Notes:

- Final areas are subject to design changes, Council approval and field survey and may differ from those shown on this Disclosure Plan.
- Final presentation of areas will comply with requirements of the Registrar of Titles and may vary from the format on this Disclosure Plan
- "The Seller is entitled to make a Permitted Variation (as defined in Special Condition 3 of the contract) to the lot including its location, area, size, dimensions and elevation".
- Design contours are approximate only and may change during construction
- Services have been plotted from design information only and may change during construction
- All earthworks fill to lots has been placed and compacted on Level 1 basis in accordance with Australian Standard AS3798-2007 "Guidelines on earthworks for commercial and residential developments".



Scale 1:300 - Lengths are in Metres.



**gassman
development
perspectives**
est 1985
planning | environment | landscape | engineering | survey
T: 3807 3333 | F: 3287 5461 | www.gassman.com.au
Gold Coast & Logan | 76 Business Street, Yatala QLD | PO Box 392, Beenleigh 4207

Client
Helensvale Nominee Pty Ltd

Project
DISCLOSURE PLAN
LOT 2112
(Survey plan: SP280875)
THE SURROUNDS
Country Club Drive Helensvale

Locality **HELENSVALE**

Local Govt **GOLD COAST CITY COUNCIL**

Scale (on A4 original)
1:300

Issue Date 05/04/2018
Meridian SP280875
Level Datum AHD
Contour Interval 0.5m Existing
0.2m Design
Drawn NDB
Date Drafted 05/02/2018
Checked JD

Real Property Description:
Lot 960 on SP280855

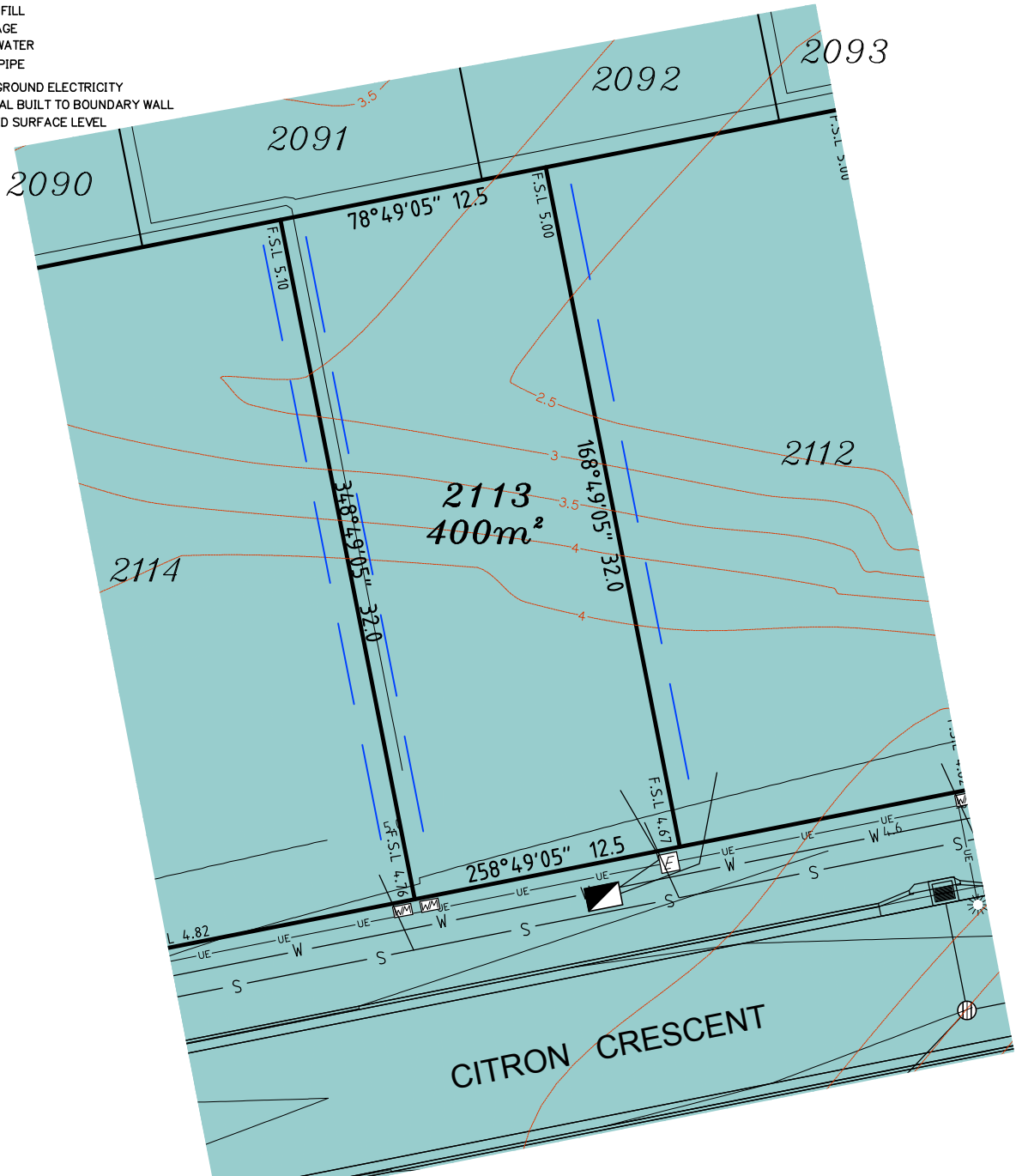
REFERENCE No. 5408-14-STG 2D
PLAN No. 5408 S DC LOT 2112

LEGEND

- ⊙ . . . SEWER MANHOLE
- ⊙ . . . SEWER MAINTENANCE SHAFT
- ⊙ . . . SEWER RISING MAIN
- ⊙ . . . STORMWATER MANHOLE
- ⊙ . . . GULLY TRAP
- ⊙ . . . WATER METER
- ⊙ . . . FIRE HYDRANT
- ⊙ . . . STOP VALVE
- ⊙ . . . ELECTRICITY PILLAR
- ⊙ . . . COMMS PIT
- ⊙ . . . LIGHT POLE
- — — EXISTING SURFACE CONTOURS
- — — DESIGN CONTOURS
- — — DESIGN FILL
- S—S— SEWERAGE
- SW—SW— STORMWATER
- W—W— WATER PIPE
- UE—UE— UNDERGROUND ELECTRICITY
- — — OPTIONAL BUILT TO BOUNDARY WALL
- F.S.L 3.44 FINISHED SURFACE LEVEL

Notes:

- Final areas are subject to design changes, Council approval and field survey and may differ from those shown on this Disclosure Plan.
- Final presentation of areas will comply with requirements of the Registrar of Titles and may vary from the format on this Disclosure Plan
- "The Seller is entitled to make a Permitted Variation (as defined in Special Condition 3 of the contract) to the lot including its location, area, size, dimensions and elevation".
- Design contours are approximate only and may change during construction
- Services have been plotted from design information only and may change during construction
- All earthworks fill to lots has been placed and compacted on Level 1 basis in accordance with Australian Standard AS3798-2007 "Guidelines on earthworks for commercial and residential developments".



Scale 1:300 - Lengths are in Metres.



**gassman
development
perspectives**
est 1985
planning | environment | landscape | engineering | survey
T: 3807 3333 | F: 3287 5461 | www.gassman.com.au
Gold Coast & Logan | 76 Business Street, Yatala QLD | PO Box 392, Beenleigh 4207

Client
Helensvale Nominee Pty Ltd

Project
DISCLOSURE PLAN
LOT 2113
(Survey plan: SP280875)
THE SURROUNDS
Country Club Drive Helensvale

Locality HELENSVALE
Local Govt GOLD COAST CITY COUNCIL
Scale (on A4 original) 1:300

Issue Date 05/04/2018
Meridian SP280875
Level Datum AHD
Contour Interval 0.5m Existing
0.2m Design
Drawn NDB
Date Drafted 05/02/2018
Checked JD

Real Property Description:
Lot 960 on SP280855

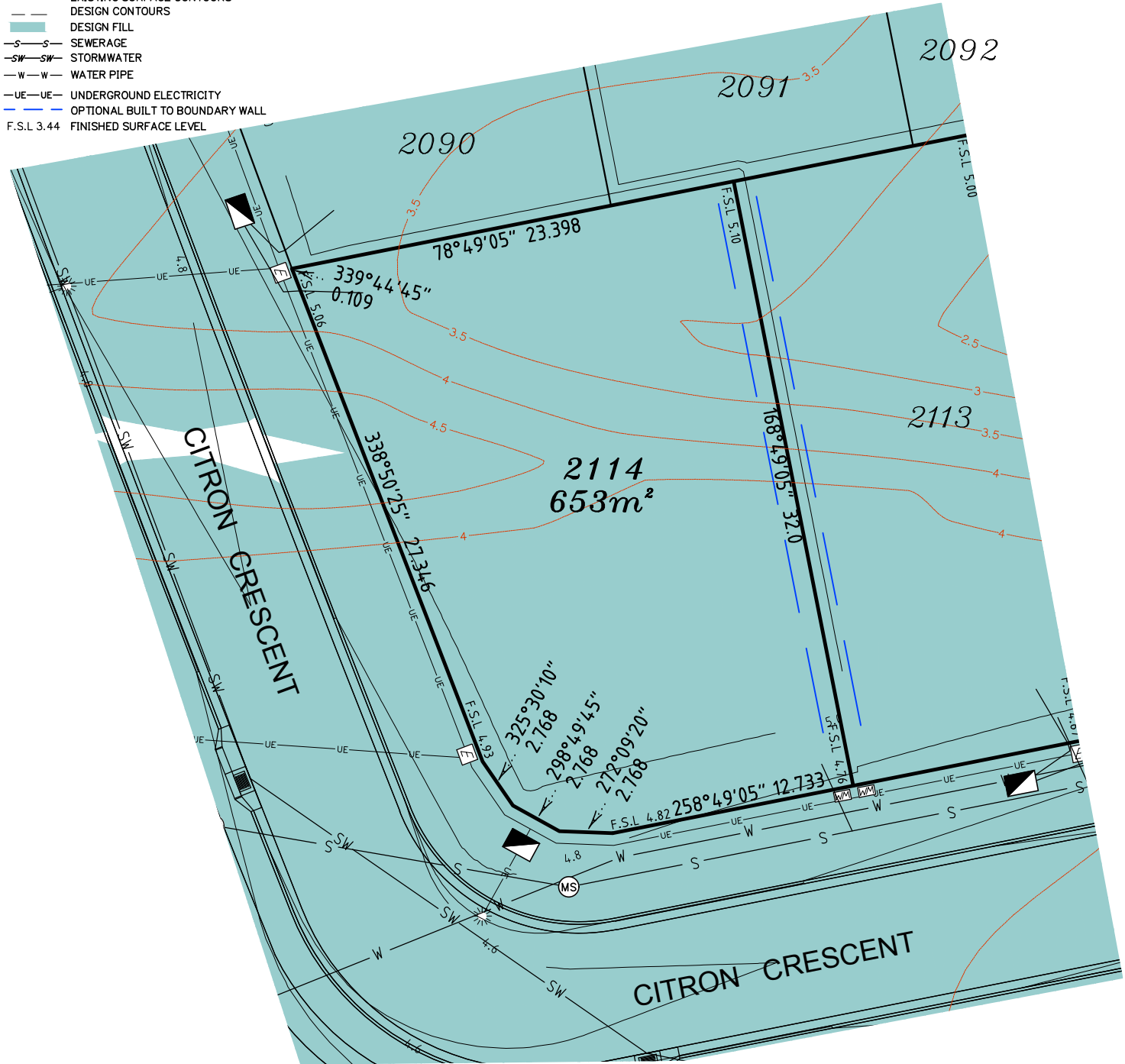
REFERENCE No. 5408-14-STG 2D
PLAN No. 5408 S DC LOT 2113

LEGEND

- ⊙ . . . SEWER MANHOLE
- ⊙ . . . SEWER MAINTENANCE SHAFT
- ⊙ . . . SEWER RISING MAIN
- ⊙ . . . STORMWATER MANHOLE
- ⊙ . . . GULLY TRAP
- ⊙ . . . WATER METER
- ⊙ . . . FIRE HYDRANT
- ⊙ . . . STOP VALVE
- ⊙ . . . ELECTRICITY PILLAR
- ⊙ . . . COMMS PIT
- ⊙ . . . LIGHT POLE
- — — EXISTING SURFACE CONTOURS
- — — DESIGN CONTOURS
- █ . . . DESIGN FILL
- S—S— SEWERAGE
- SW—SW— STORMWATER
- W—W— WATER PIPE
- UE—UE— UNDERGROUND ELECTRICITY
- — — OPTIONAL BUILT TO BOUNDARY WALL
- F.S.L 3.44 FINISHED SURFACE LEVEL

Notes:

- Final areas are subject to design changes, Council approval and field survey and may differ from those shown on this Disclosure Plan.
- Final presentation of areas will comply with requirements of the Registrar of Titles and may vary from the format on this Disclosure Plan
- "The Seller is entitled to make a Permitted Variation (as defined in Special Condition 3 of the contract) to the lot including its location, area, size, dimensions and elevation".
- Design contours are approximate only and may change during construction
- Services have been plotted from design information only and may change during construction
- All earthworks fill to lots has been placed and compacted on Level 1 basis in accordance with Australian Standard AS3798-2007 "Guidelines on earthworks for commercial and residential developments".



gassman development perspectives
 est 1985
 planning | environment | landscape | engineering | survey
 T: 3807 3333 | F: 3287 5461 | www.gassman.com.au
 Gold Coast & Logan | 76 Business Street, Yatala QLD | PO Box 392, Beenleigh 4207

Client	Helensvale Nominee Pty Ltd
Project	DISCLOSURE PLAN LOT 2114 (Survey plan: SP280875) THE SURROUNDS Country Club Drive Helensvale
Real Property Description:	Lot 960 on SP280855

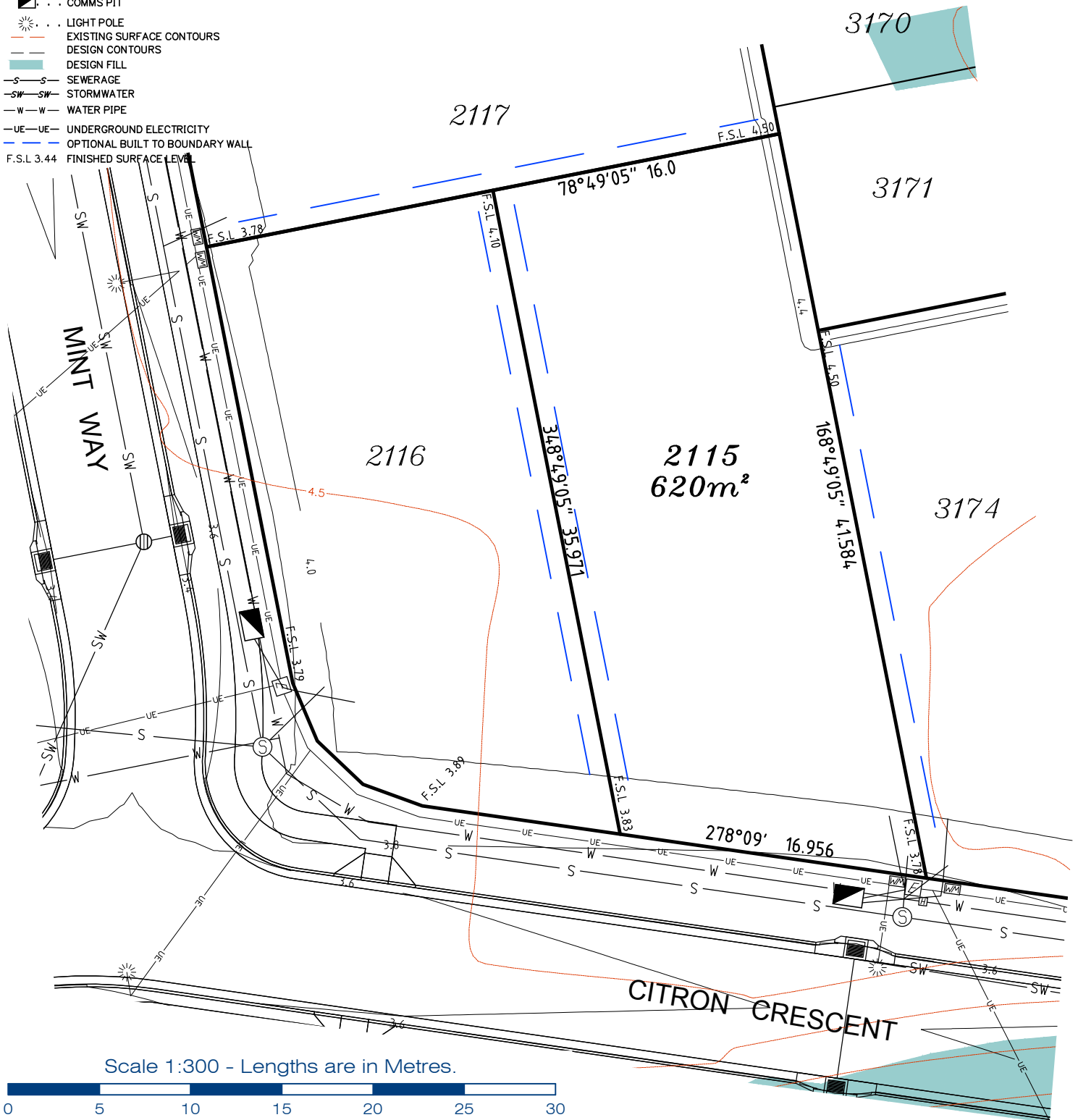
Issue Date	05/04/2018
Meridian	SP280875
Level Datum	AHD
Contour Interval	0.5m Existing 0.2m Design
Drawn	NDB
Date Drafted	05/02/2018
Checked	JD
Scale (on A4 original)	1:300
REFERENCE No.	5408-14-STG 2D
PLAN No.	5408 S DC LOT 2114

LEGEND

- ⊙ . . . SEWER MANHOLE
- ⊙ . . . SEWER MAINTENANCE SHAFT
- ⊙ . . . SEWER RISING MAIN
- ⊙ . . . STORMWATER MANHOLE
- ⊙ . . . GULLY TRAP
- ⊙ . . . WATER METER
- ⊙ . . . FIRE HYDRANT
- ⊙ . . . STOP VALVE
- ⊙ . . . ELECTRICITY PILLAR
- ⊙ . . . COMMS PIT
- ⊙ . . . LIGHT POLE
- — — EXISTING SURFACE CONTOURS
- — — DESIGN CONTOURS
- — — DESIGN FILL
- — — SEWERAGE
- — — STORMWATER
- — — WATER PIPE
- — — UNDERGROUND ELECTRICITY
- — — OPTIONAL BUILT TO BOUNDARY WALL
- F.S.L 3.44 FINISHED SURFACE LEVEL

Notes:

- Final areas are subject to design changes, Council approval and field survey and may differ from those shown on this Disclosure Plan.
- Final presentation of areas will comply with requirements of the Registrar of Titles and may vary from the format on this Disclosure Plan
- "The Seller is entitled to make a Permitted Variation (as defined in Special Condition 3 of the contract) to the lot including its location, area, size, dimensions and elevation".
- Design contours are approximate only and may change during construction
- Services have been plotted from design information only and may change during construction
- All earthworks fill to lots has been placed and compacted on Level 1 basis in accordance with Australian Standard AS3798-2007 "Guidelines on earthworks for commercial and residential developments".



gassman development perspectives
 est 1985
 planning | environment | landscape | engineering | survey
 T: 3807 3333 | F: 3287 5461 | www.gassman.com.au
 Gold Coast & Logan | 176 Business Street, Yatala QLD | PO Box 392, Beenleigh 4207

Client	Helensvale Nominee Pty Ltd
Project	DISCLOSURE PLAN LOT 2115 (Survey plan: SP280875) THE SURROUNDS Country Club Drive Helensvale

Locality	HELENSVALE	Issue Date	05/04/2018
Local Govt	GOLD COAST CITY COUNCIL	Meridian	SP280875
Scale (on A4 original)	1:300	Level Datum	AHD
		Contour Interval	0.5m Existing 0.2m Design
		Drawn	NDB
		Date Drafted	05/02/2018
		Checked	JD

Real Property Description:
 Lot 960 on SP280855

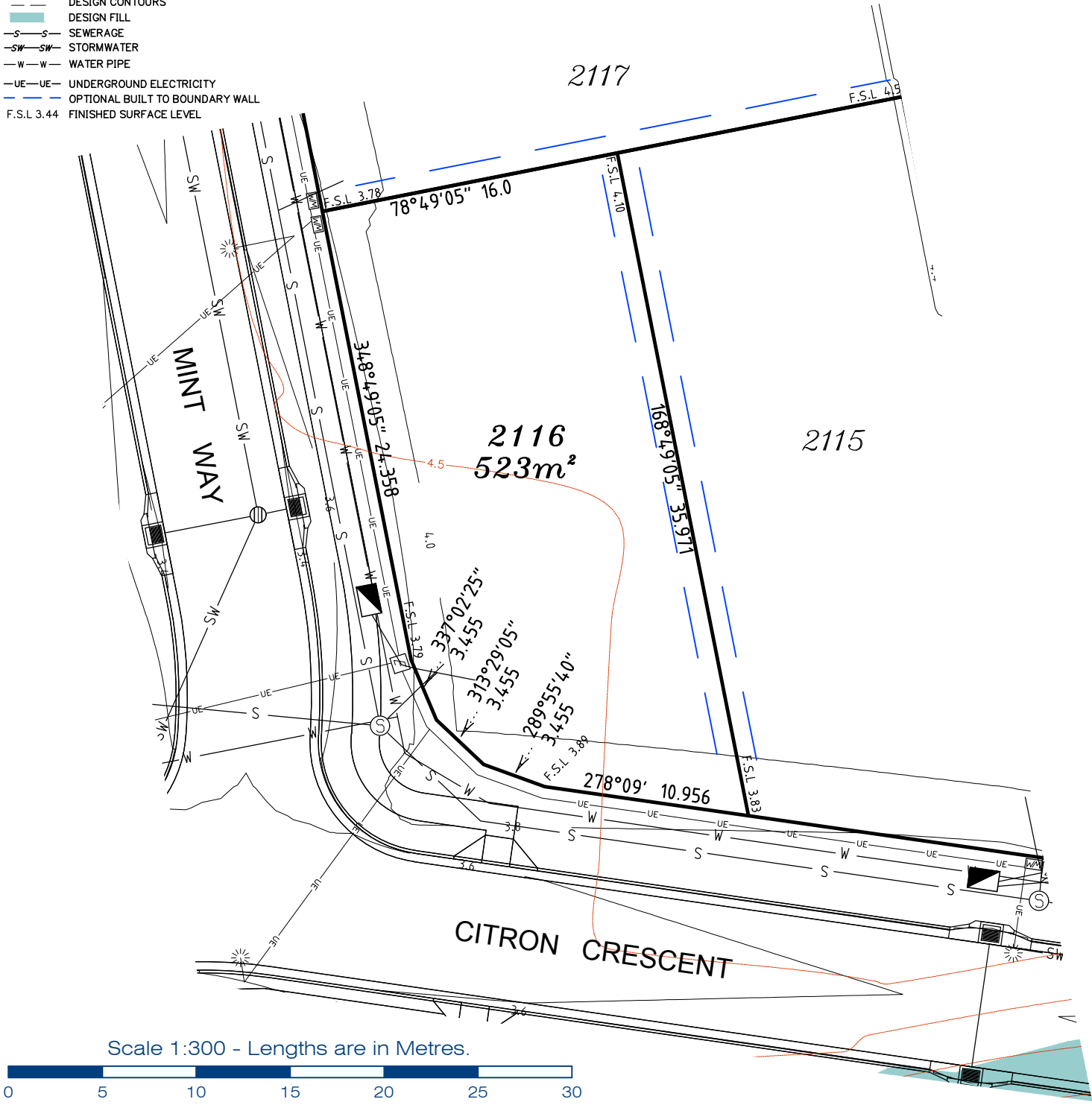
REFERENCE No. 5408-14-STG 2D
PLAN No. 5408 S DC LOT 2115

LEGEND

- ⊙ . . . SEWER MANHOLE
- ⊙ . . . SEWER MAINTENANCE SHAFT
- ⊙ . . . SEWER RISING MAIN
- ⊙ . . . STORMWATER MANHOLE
- ⊙ . . . GULLY TRAP
- ⊙ . . . WATER METER
- ⊙ . . . FIRE HYDRANT
- ⊙ . . . STOP VALVE
- ⊙ . . . ELECTRICITY PILLAR
- ⊙ . . . COMMS PIT
- ⊙ . . . LIGHT POLE
- — — EXISTING SURFACE CONTOURS
- — — DESIGN CONTOURS
- █ . . . DESIGN FILL
- S — S — SEWERAGE
- SW — SW — STORMWATER
- W — W — WATER PIPE
- UE — UE — UNDERGROUND ELECTRICITY
- — — OPTIONAL BUILT TO BOUNDARY WALL
- F.S.L 3.44 FINISHED SURFACE LEVEL

Notes:

- Final areas are subject to design changes, Council approval and field survey and may differ from those shown on this Disclosure Plan.
- Final presentation of areas will comply with requirements of the Registrar of Titles and may vary from the format on this Disclosure Plan
- "The Seller is entitled to make a Permitted Variation (as defined in Special Condition 3 of the contract) to the lot including its location, area, size, dimensions and elevation".
- Design contours are approximate only and may change during construction
- Services have been plotted from design information only and may change during construction
- All earthworks fill to lots has been placed and compacted on Level 1 basis in accordance with Australian Standard AS3798-2007 "Guidelines on earthworks for commercial and residential developments".



Scale 1:300 - Lengths are in Metres.



gassman development perspectives
 est 1985
 planning | environment | landscape | engineering | survey
 T: 3807 3333 | F: 3287 5461 | www.gassman.com.au
 Gold Coast & Logan | 176 Business Street, Yatala QLD | PO Box 392, Beenleigh 4207

Client	Helensvale Nominee Pty Ltd
Project	DISCLOSURE PLAN LOT 2116 (Survey plan: SP280875) THE SURROUNDS Country Club Drive Helensvale
Real Property Description:	Lot 960 on SP280855

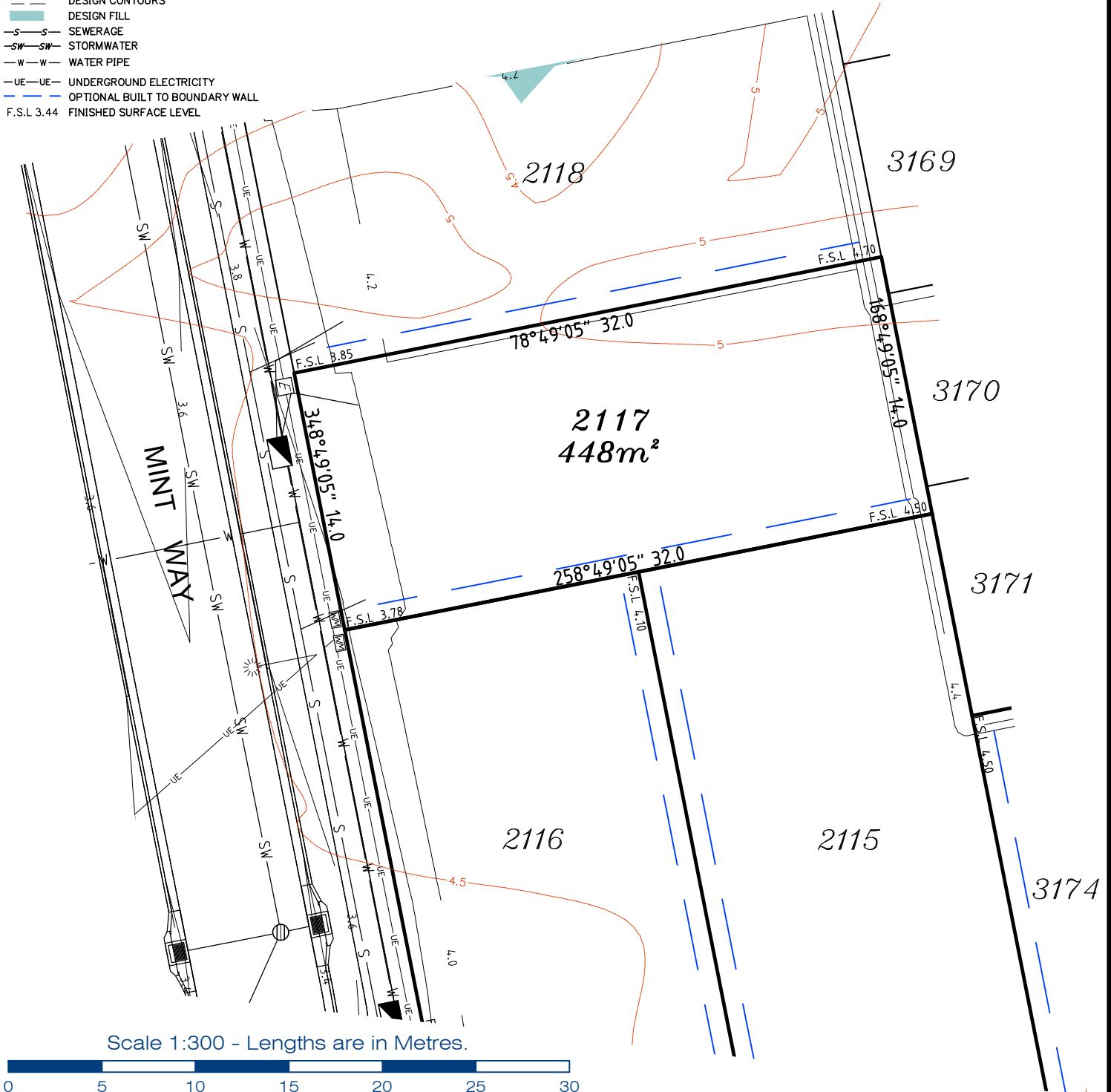
Issue Date	05/04/2018
Meridian	SP280875
Level Datum	AHD
Contour Interval	0.5m Existing 0.2m Design
Drawn	NDB
Date Drafted	05/02/2018
Checked	JD
REFERENCE No.	5408-14-STG 2D
PLAN No.	5408 S DC LOT 2116

LEGEND

- ⊙ . . . SEWER MANHOLE
- ⊙ . . . SEWER MAINTENANCE SHAFT
- ⊙ . . . SEWER RISING MAIN
- ⊙ . . . STORMWATER MANHOLE
- ⊙ . . . GULLY TRAP
- ⊙ . . . WATER METER
- ⊙ . . . FIRE HYDRANT
- ⊙ . . . STOP VALVE
- ⊙ . . . ELECTRICITY PILLAR
- ⊙ . . . COMMS PIT
- ⊙ . . . LIGHT POLE
- — — EXISTING SURFACE CONTOURS
- — — DESIGN CONTOURS
- █ . . . DESIGN FILL
- S — S SEWERAGE
- SW — SW STORMWATER
- W — W WATER PIPE
- UE — UE UNDERGROUND ELECTRICITY
- — — OPTIONAL BUILT TO BOUNDARY WALL
- F.S.L 3.44 FINISHED SURFACE LEVEL

Notes:

- Final areas are subject to design changes, Council approval and field survey and may differ from those shown on this Disclosure Plan.
- Final presentation of areas will comply with requirements of the Registrar of Titles and may vary from the format on this Disclosure Plan
- "The Seller is entitled to make a Permitted Variation (as defined in Special Condition 3 of the contract) to the lot including its location, area, size, dimensions and elevation".
- Design contours are approximate only and may change during construction
- Services have been plotted from design information only and may change during construction
- All earthworks fill to lots has been placed and compacted on Level 1 basis in accordance with Australian Standard AS3798-2007 "Guidelines on earthworks for commercial and residential developments".



Scale 1:300 - Lengths are in Metres.



planning | environment | landscape | engineering | survey

T: 3807 3333 | F: 3287 5461 | www.gassman.com.au

Gold Coast & Logan | 76 Business Street, Yatala QLD | PO Box 392, Beenleigh 4207

Client	Helensvale Nominee Pty Ltd
Project	DISCLOSURE PLAN LOT 2117 (Survey plan: SP280875) THE SURROUNDS Country Club Drive Helensvale

Locality	HELENSVALE	Issue Date	05/04/2018
Local Govt	GOLD COAST CITY COUNCIL	Meridian	SP280875
Scale (on A4 original)	1:300	Level Datum	AHD
		Contour Interval	0.5m Existing 0.2m Design
		Drawn	NDB
		Date Drafted	05/02/2018
		Checked	JD

Real Property Description:
Lot 960 on SP280855

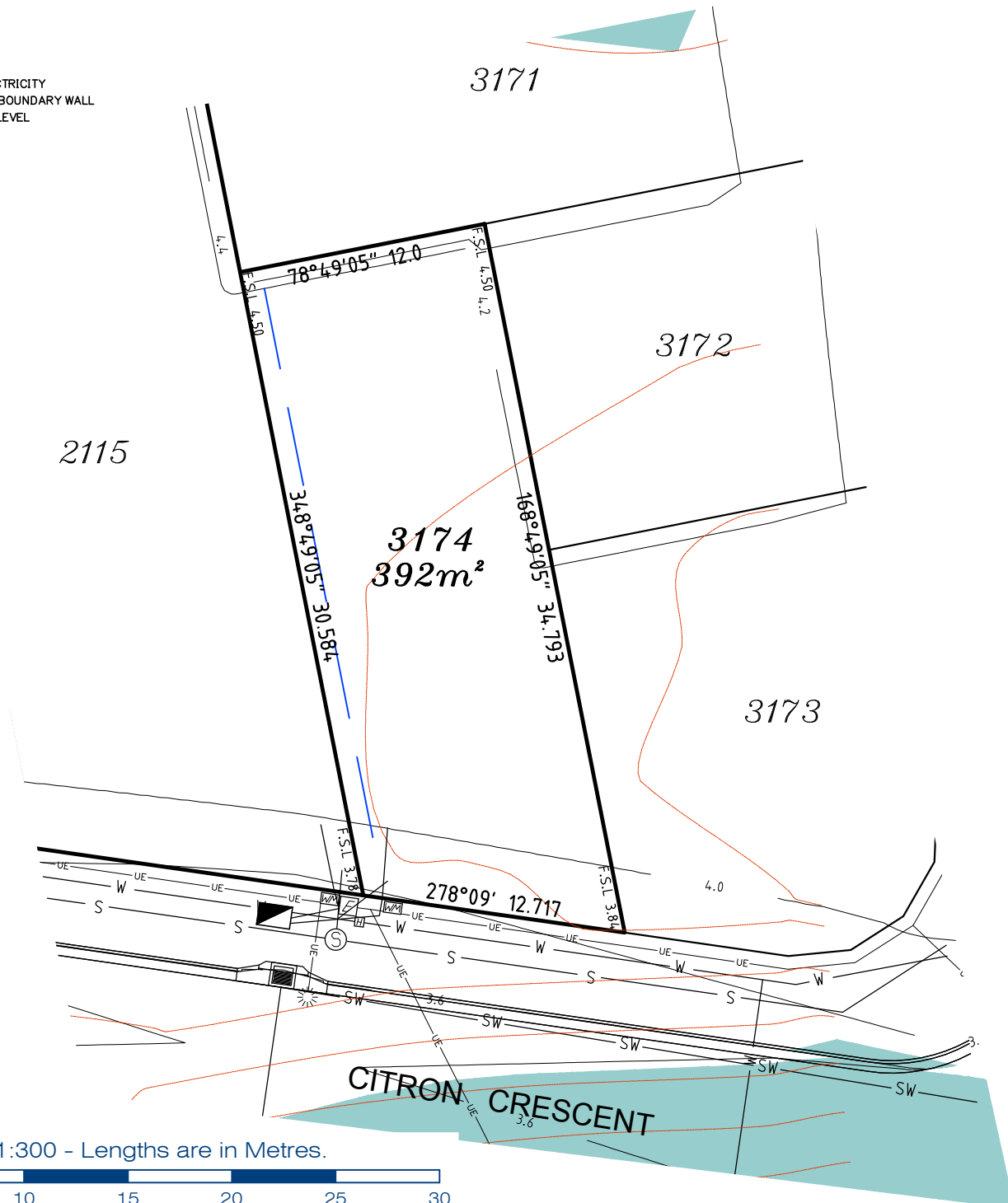
REFERENCE No. 5408-14-STG 2D
PLAN No. 5408 S DC LOT 2117

LEGEND

- ⊙ . . . SEWER MANHOLE
- ⊙ . . . SEWER MAINTENANCE SHAFT
- ⊙ . . . SEWER RISING MAIN
- ⊙ . . . STORMWATER MANHOLE
- ⊙ . . . GULLY TRAP
- ⊙ . . . WATER METER
- ⊙ . . . FIRE HYDRANT
- ⊙ . . . STOP VALVE
- ⊙ . . . ELECTRICITY PILLAR
- ⊙ . . . COMMS PIT
- ⊙ . . . LIGHT POLE
- — — EXISTING SURFACE CONTOURS
- — — DESIGN CONTOURS
- . . . DESIGN FILL
- S—S— SEWERAGE
- SW—SW— STORMWATER
- W—W— WATER PIPE
- UE—UE— UNDERGROUND ELECTRICITY
- — — OPTIONAL BUILT TO BOUNDARY WALL
- F.S.L 3.44 FINISHED SURFACE LEVEL

Notes:

- Final areas are subject to design changes, Council approval and field survey and may differ from those shown on this Disclosure Plan.
- Final presentation of areas will comply with requirements of the Registrar of Titles and may vary from the format on this Disclosure Plan
- "The Seller is entitled to make a Permitted Variation (as defined in Special Condition 3 of the contract) to the lot including its location, area, size, dimensions and elevation".
- Design contours are approximate only and may change during construction
- Services have been plotted from design information only and may change during construction
- All earthworks fill to lots has been placed and compacted on Level 1 basis in accordance with Australian Standard AS3798-2007 "Guidelines on earthworks for commercial and residential developments".



Scale 1:300 - Lengths are in Metres.



gassman development perspectives
 est 1985
 planning | environment | landscape | engineering | survey
 T: 3807 3333 | F: 3287 5461 | www.gassman.com.au
 Gold Coast & Logan | 76 Business Street, Yatala QLD | PO Box 392, Beenleigh 4207

Client	Helensvale Nominee Pty Ltd
Project	DISCLOSURE PLAN LOT 3174 (Survey plan: SP280875) THE SURROUNDS Country Club Drive Helensvale

Locality	HELENSVALE	Issue Date	05/07/2018
Local Govt	GOLD COAST CITY COUNCIL	Meridian	SP280875
Scale (on A4 original)	1:300	Level Datum	AHD
		Contour Interval	0.5m Existing 0.2m Design
		Drawn	NDB
		Date Drafted	05/02/2018
		Checked	JD

Real Property Description:
 Lot 960 on SP280855

REFERENCE No. 5408-14-STG 2D
PLAN No. 5408 S DC LOT 3174 A