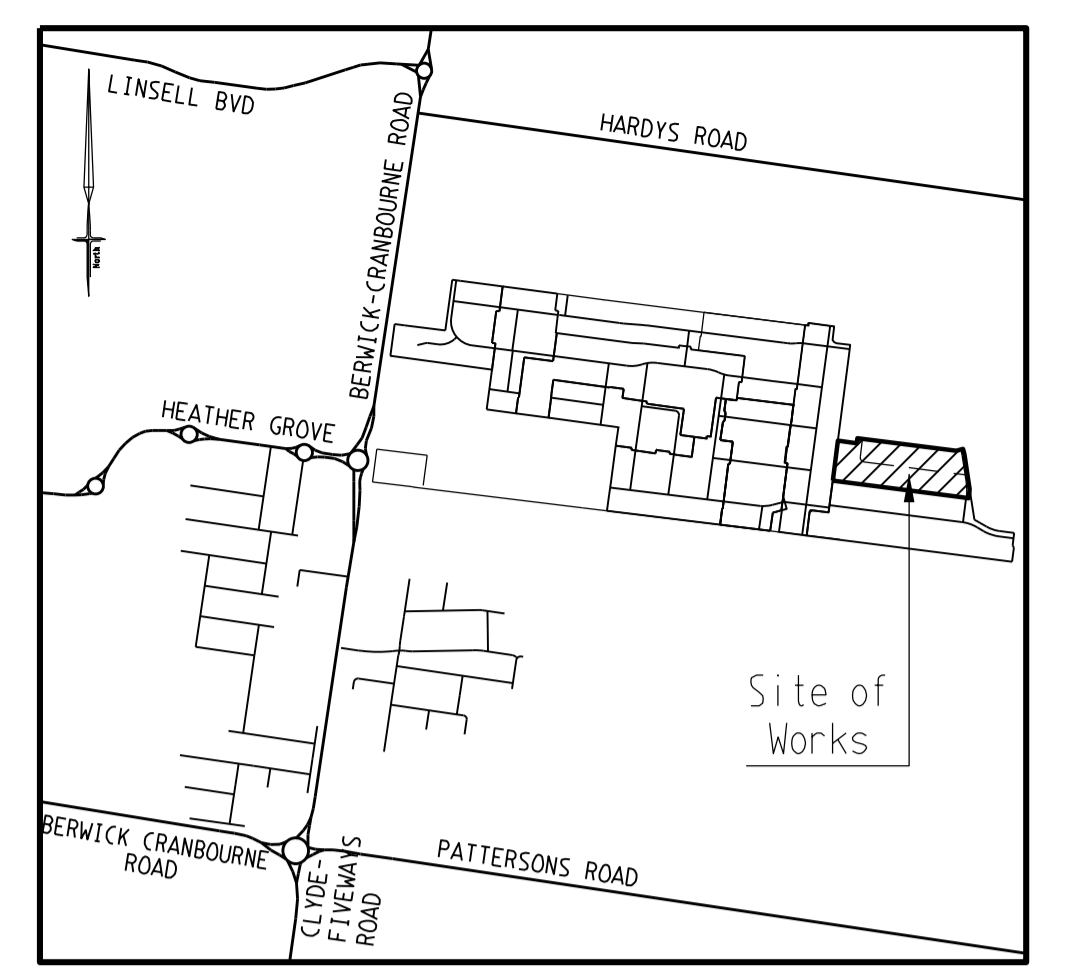
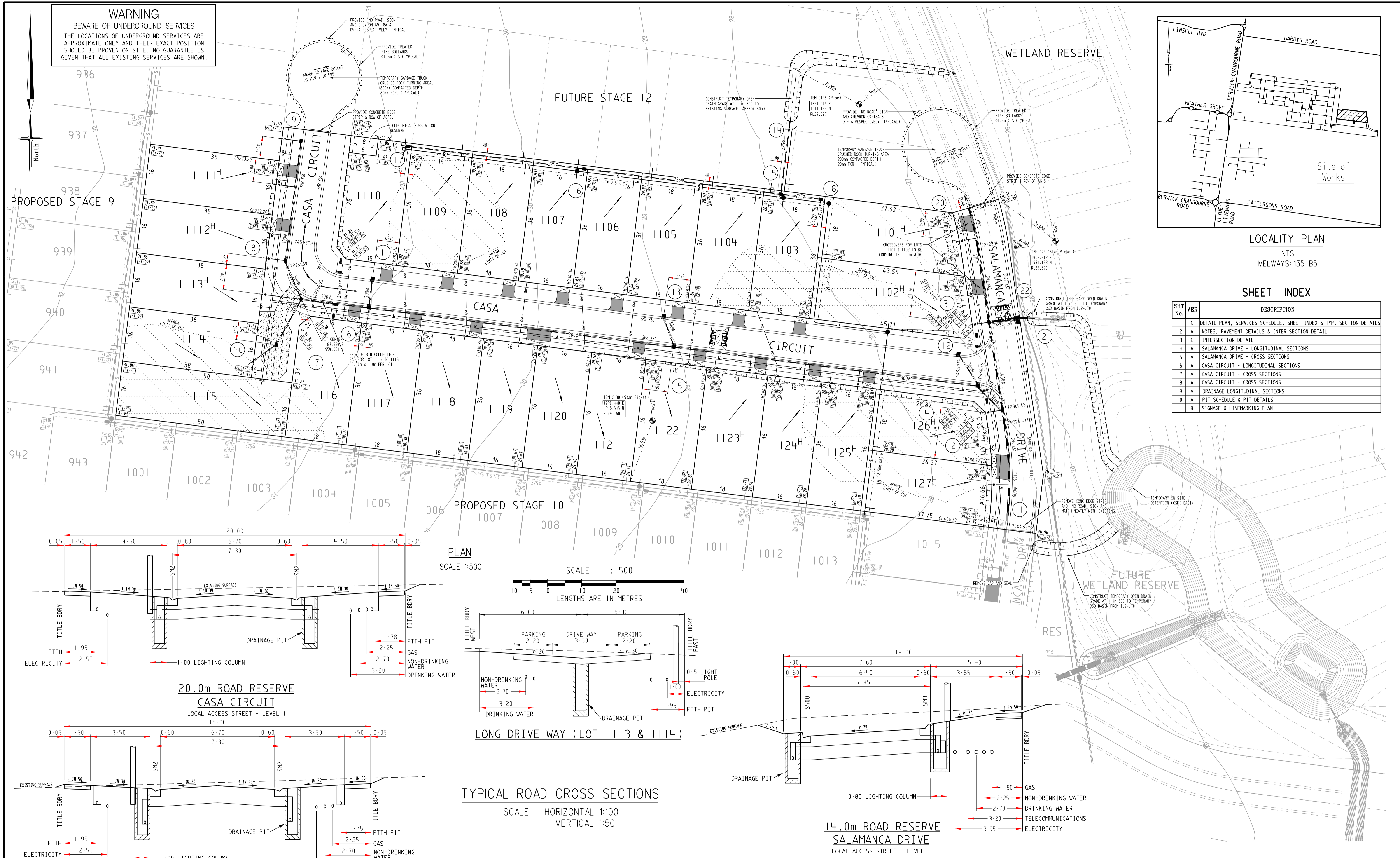


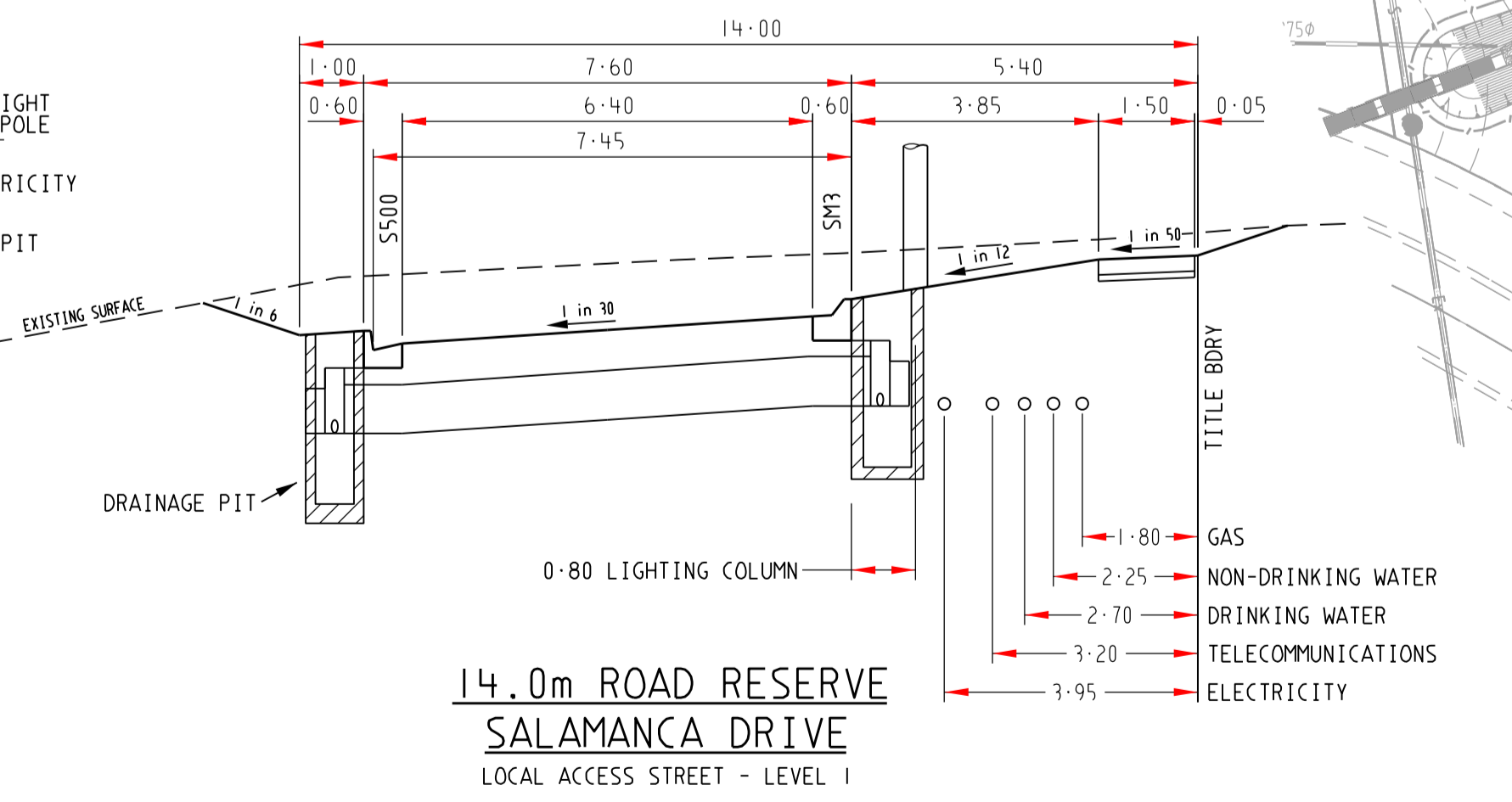
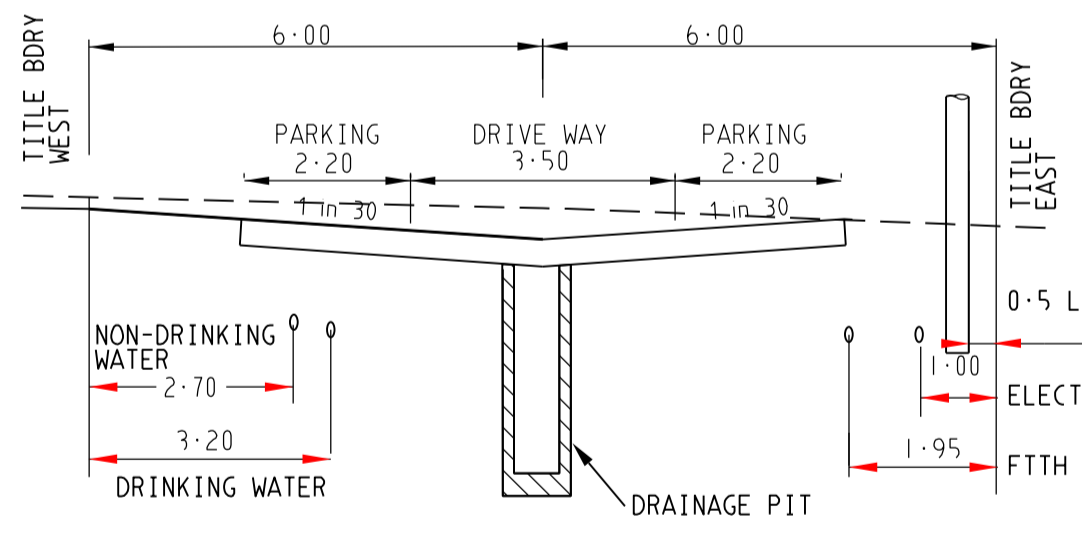
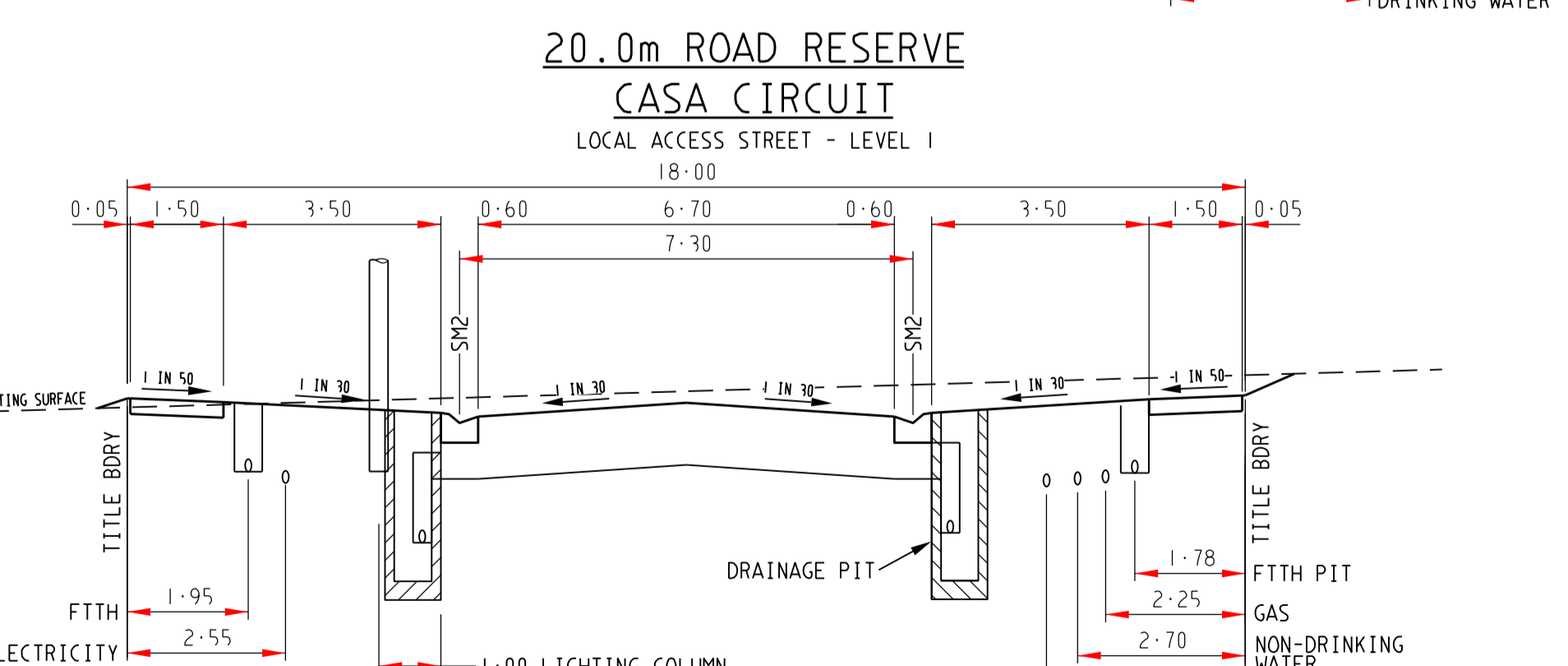
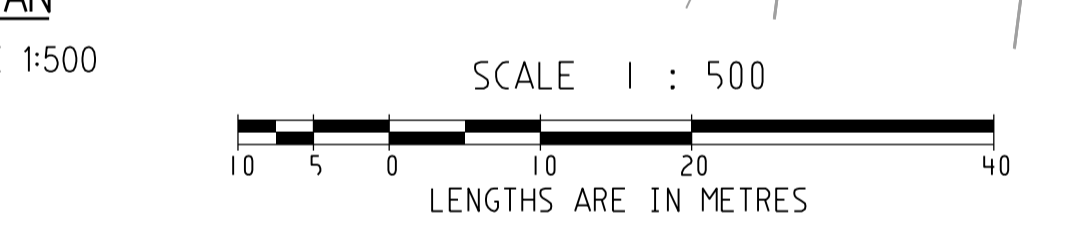
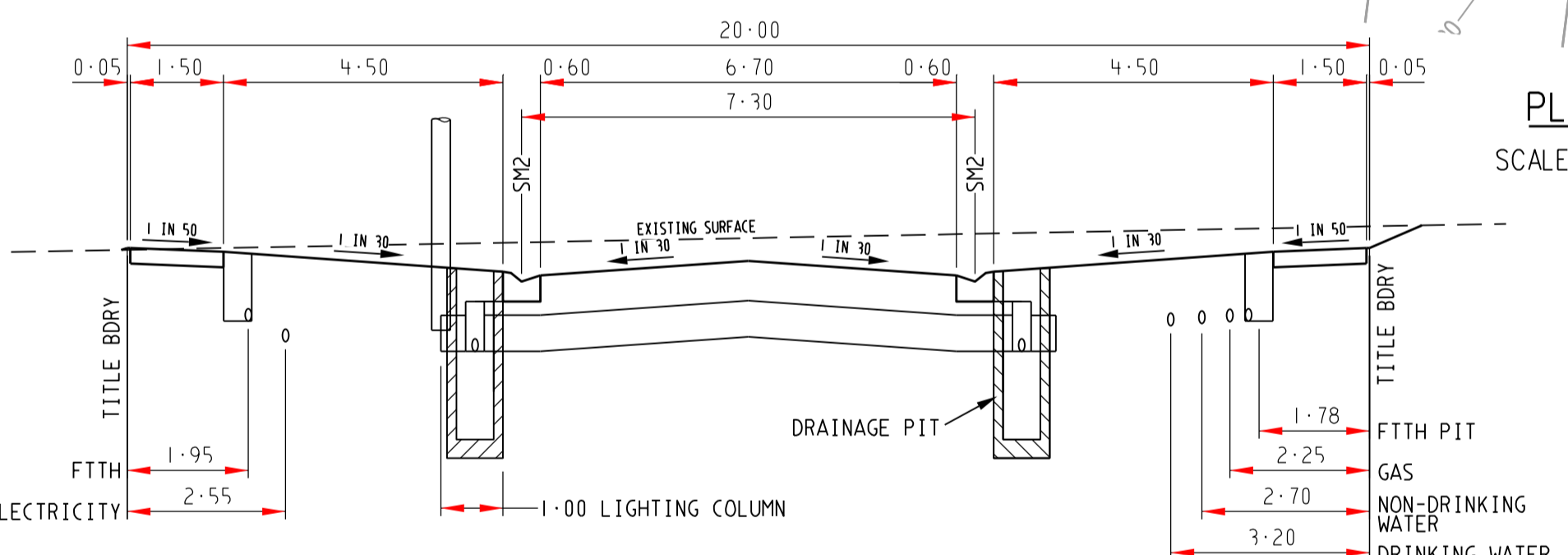
WARNING
BEWARE OF UNDERGROUND SERVICES
THE LOCATIONS OF UNDERGROUND SERVICES ARE APPROXIMATE ONLY AND THEIR EXACT POSITION SHOULD BE PROVEN ON SITE. NO GUARANTEE IS GIVEN THAT ALL EXISTING SERVICES ARE SHOWN.



LOCALITY PLAN
NTS
MELWAYS: 135 B5

SHEET INDEX

SHT No	VBR	DESCRIPTION
1	C	DETAIL PLAN, SERVICES SCHEDULE, SHEET INDEX & TYP. SECTION DETAILS
2	A	NOTES, PAVEMENT DETAILS & INTER SECTION DETAIL
3	C	INTERSECTION DETAIL
4	A	SALAMANCA DRIVE - LONGITUDINAL SECTIONS
5	A	SALAMANCA DRIVE - CROSS SECTIONS
6	A	CASA CIRCUIT - LONGITUDINAL SECTIONS
7	A	CASA CIRCUIT - CROSS SECTIONS
8	A	CASA CIRCUIT - CROSS SECTIONS
9	A	DRAINAGE LONGITUDINAL SECTIONS
10	A	PIT SCHEDULE & PIT DETAILS
11	B	SIGNAGE & LINEMARKING PLAN



SERVICES OFFSETS AND LOCATIONS

STREET NAME	Rd. RESERVE	WATER	NON-DRINKING WATER	GAS	ELECTRICITY CABLES	POLES	FIBRE TO THE HOME CABLES	FTH CABLES	FTH PITS	Bk. of KERB	JOINT TRENCHING	STREET CLASSIFICATION
SALAMANCA DRIVE	14-00	2-70 W	2-25 W	1-80 W	3-95 W	1-00 BOK	3-20 W	1-78 N/S	5-40 W	1-00 E	G & W, FTH & E	STREET - LEVEL 1
CASA CIRCUIT	18-00	3-20 S	2-70 S	2-25 S	2-55 N	1-00 BOK	1-95 N	1-78 N/S	5-05 S	1-00 E	G & W, FTH & E	STREET - LEVEL 1
CASA CIRCUIT	20-00	3-20 W	2-70 W	2-25 W	2-55 E	1-00 BOK	1-95 E	1-78 E/W	6-05 N	1-00 E	G & W, FTH & E	STREET - LEVEL 1
LONG DRIVEWAY (LOT 1113 & 1114)	12-00	3-20 W	2-70 W	2-25 W	1-00 E	0-5 E	1-95 E	1-78 E/W	6-05 E	1-00 E	G & W, FTH & E	STREET - LEVEL 1

SYMBOL LEGEND

Prop	Exist	Ex/Natural/FS Level	28-51
Drains	Sewer <300	FS @ Building Line	28-52
Sewer >300	Water	Top/Toe of Batter	28-53
House Drain	Property Inlet	Top Ret. Wall Level	28-54
Street Sign	100yr Flood Level	Fill Prop/Ex	28-55
PSM	Retaining Wall	Cut Prop/Ex	28-56
Conduits 50mm	Conduits 100mm	Ex Gas/Elect/Tel	

AMENDMENTS

VER	DATE	REMARKS
C	11/07/17	AMENDED FS LEVELS TO LOT 1110 TO 1114.
B	27/06/17	BIN PADS ADDED & LOT 1101 & 1102 CROSSOVERS AMENDED
A	27/06/17	CONSTRUCTION ISSUE

breese pitt dixon pty. ltd.
land surveyors
civil engineers

MELWAY REF. 135-B-5

DELARAY ESTATE STAGE 11

MUNICIPALITY: CASEY

REFERENCE: 8974 E/11

1/19 cato street hawthorn east, 3123 telephone 8823 2300 fax no. 8823 2310

DATE DEC '16 SHEET 1 OF 11