

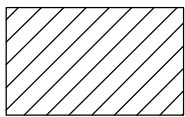
## BUILDING ENVELOPES

### LEGEND

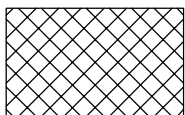
Refer "Diagrams and Plans" in this document for further definitions



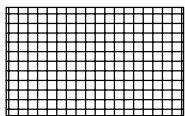
Single Storey Building Envelope (Height not exceeding 3.6m)



Overlooking Zone - Habitable room windows / raised open spaces are a source of overlooking



Non Overlooking Zone Habitable room windows / raised open spaces are not a source of overlooking



Building to Boundary Zone

The registered proprietor or proprietors of the lot are required to build in accordance with building envelopes shown hereon and in the "Profile Diagrams" in this document

SEE SHEET 8

SEE SHEET 5

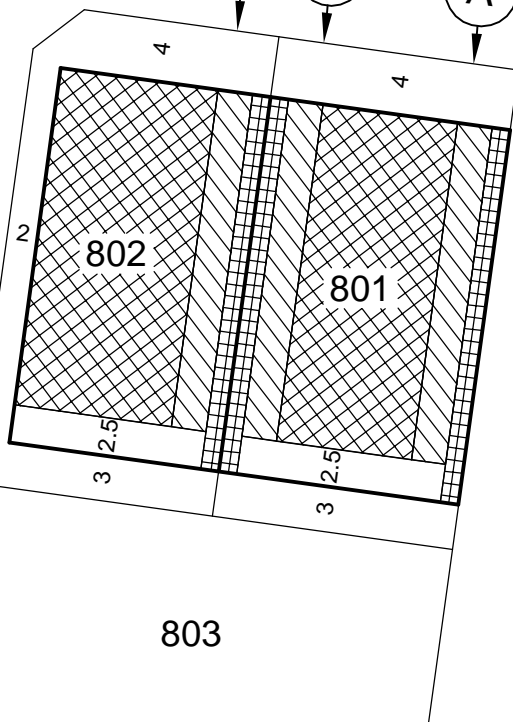
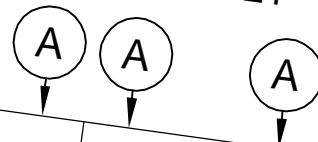
RESERVE

VILLAGE GREEN DRIVE

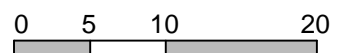
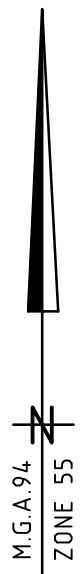
812

811

TIDAL STREET



SEE SHEET 3



Scale 1:500 @ A4

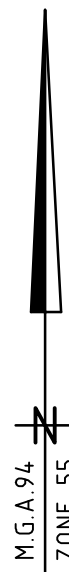
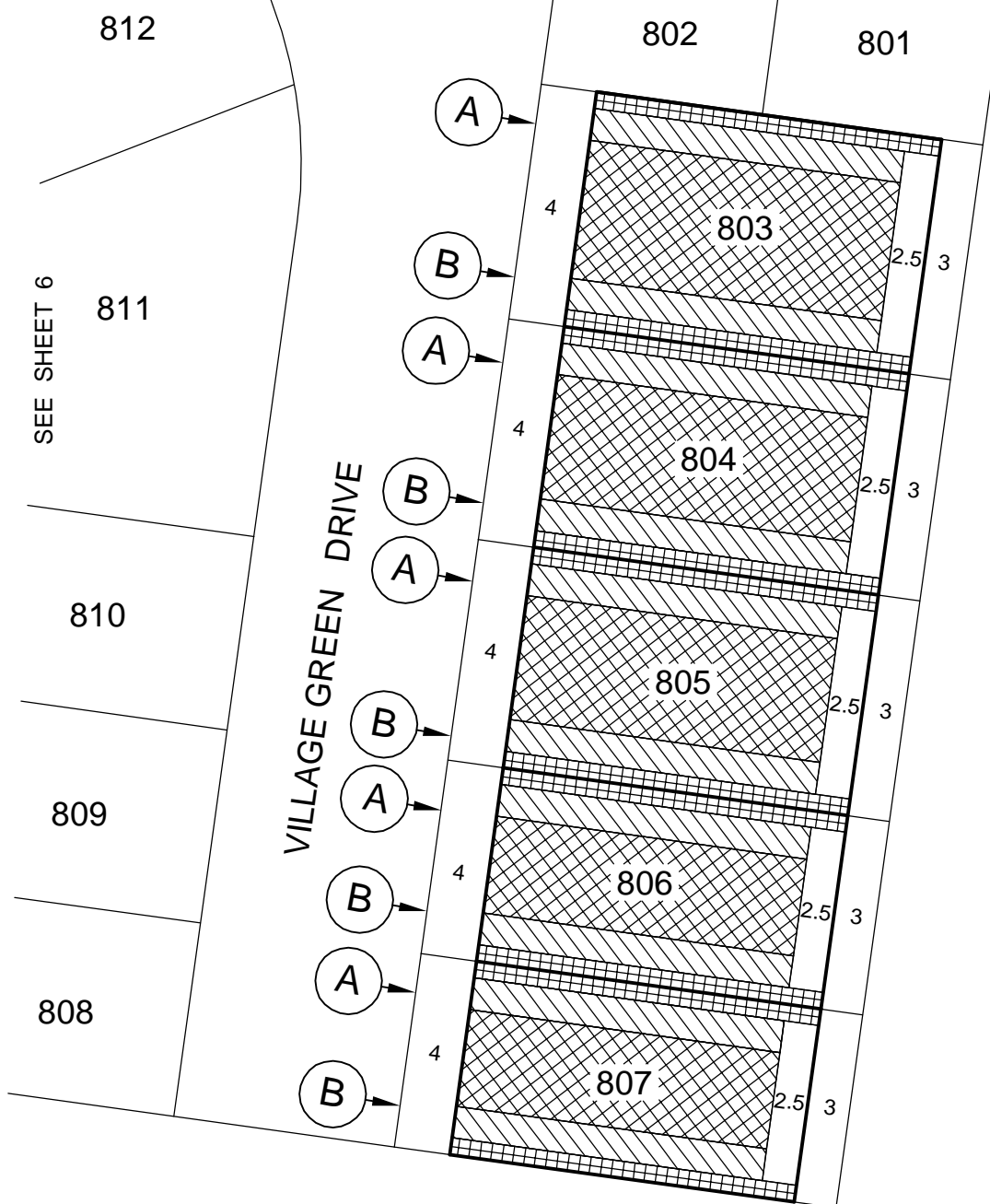
Notations:

- 1 - The Building Envelopes on this plan are shown enclosed by continuous thick lines
- 2 - This diagram is to be read in conjunction with "Profile Diagrams" in this document
- 3 - Profile types (A) & (B) are contained in "Profile Diagrams" in this document

ref: 3440248sEST08  
date: 17 February 2012  
version: J

SEE SHEET 5

SEE SHEET 2



0 5 10 20

Scale 1:500 @ A4

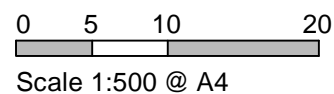
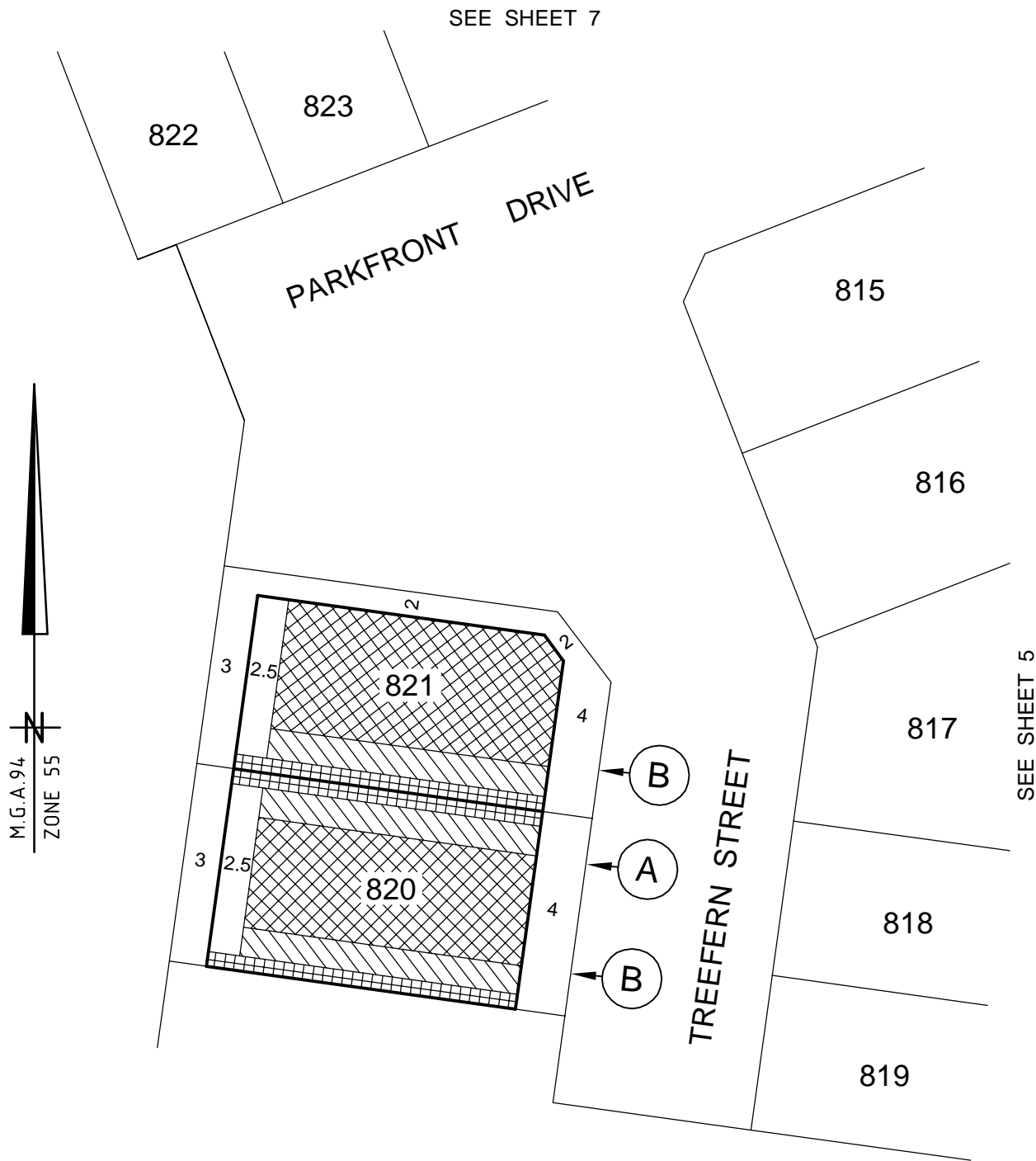
Notations:

- 1 - The Building Envelopes on this plan are shown enclosed by continuous thick lines
- 2 - This diagram is to be read in conjunction with "Profile Diagrams" in this document
- 3 - Profile types A & B are contained in "Profile Diagrams" in this document

ref: 3440248sEST08  
date: 17 February 2012  
version: J

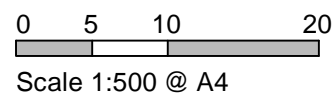
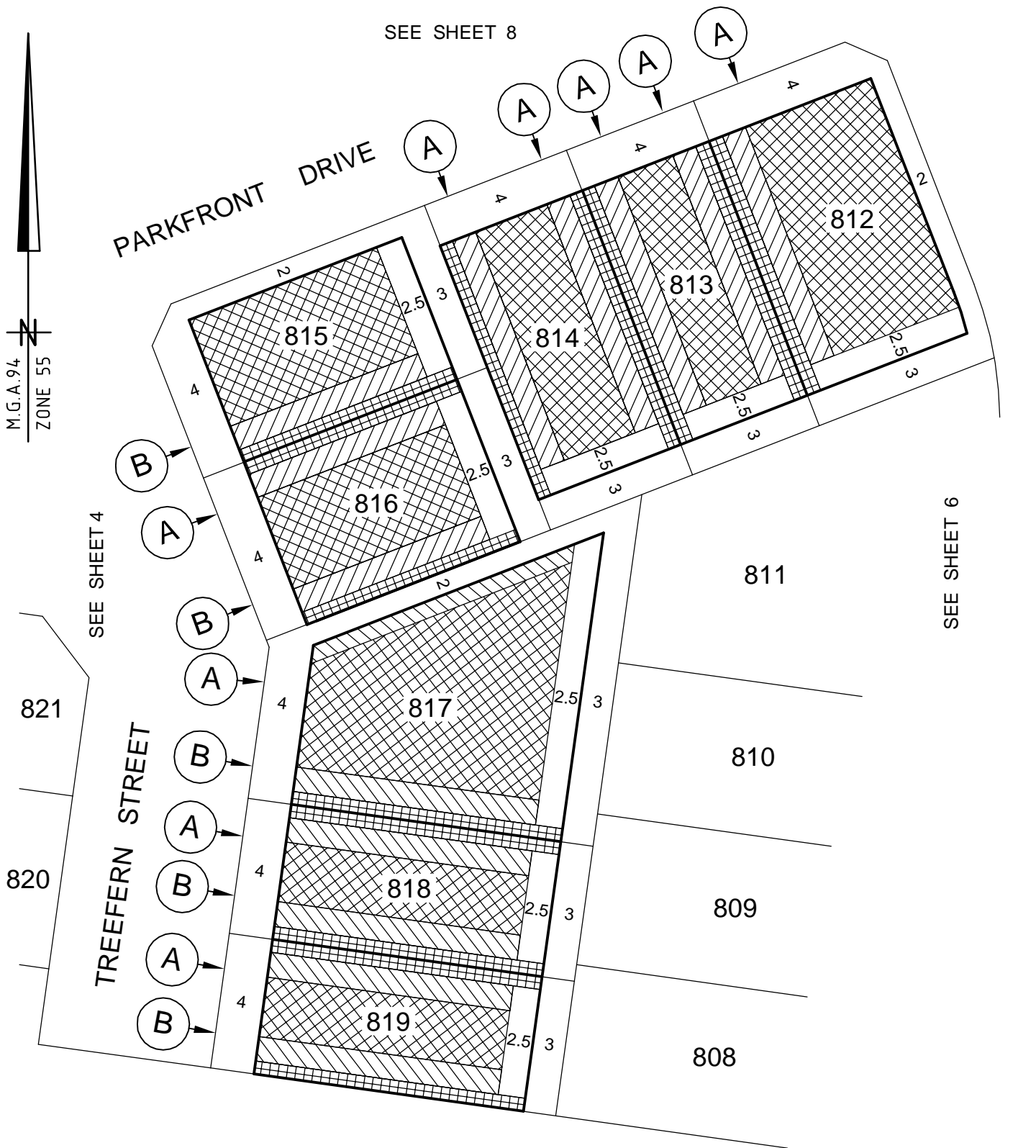


Geelong Tel +61 3 5228 3100



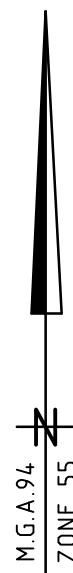
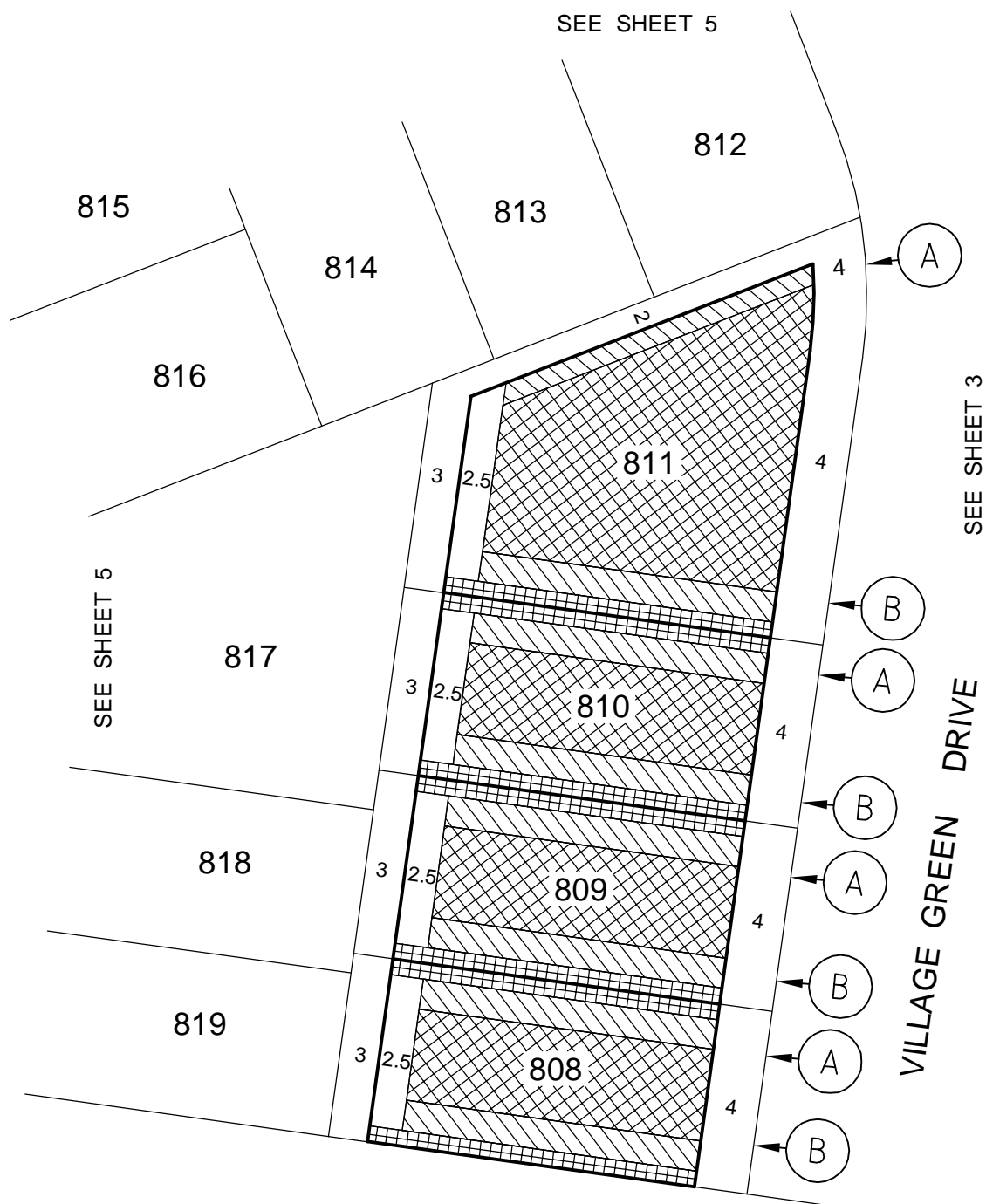
Notations:  
 1 - The Building Envelopes on this plan are shown enclosed by continuous thick lines  
 2 - This diagram is to be read in conjunction with "Profile Diagrams" in this document  
 3 - Profile types (A) & (B) are contained in "Profile Diagrams" in this document

ref: 3440248sEST08  
 date: 17 February 2012  
 version: J



- Notations:
- 1 - The Building Envelopes on this plan are shown enclosed by continuous thick lines
  - 2 - This diagram is to be read in conjunction with "Profile Diagrams" in this document
  - 3 - Profile types **A** & **B** are contained in "Profile Diagrams" in this document

ref: 3440248sEST08  
date: 17 February 2012  
version: J



0 5 10 20

Scale 1:500 @ A4

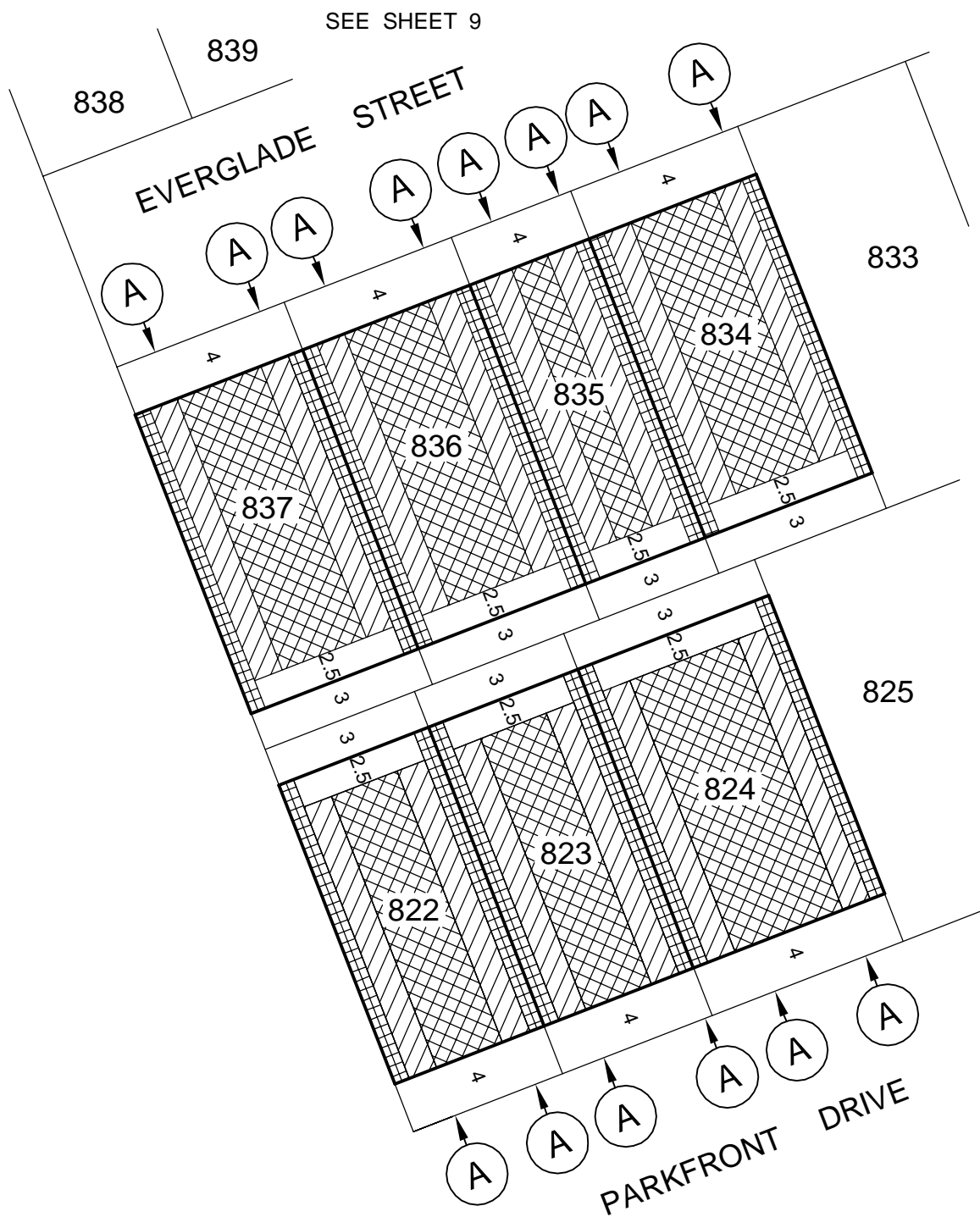
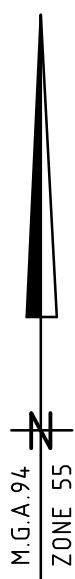
Notations:

- 1 - The Building Envelopes on this plan are shown enclosed by continuous thick lines
- 2 - This diagram is to be read in conjunction with "Profile Diagrams" in this document
- 3 - Profile types (A) & (B) are contained in "Profile Diagrams" in this document

ref: 3440248sEST08  
date: 17 February 2012  
version: J

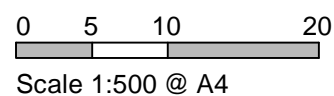


Geelong Tel +61 3 5228 3100



SEE SHEET 8

SEE SHEET 4

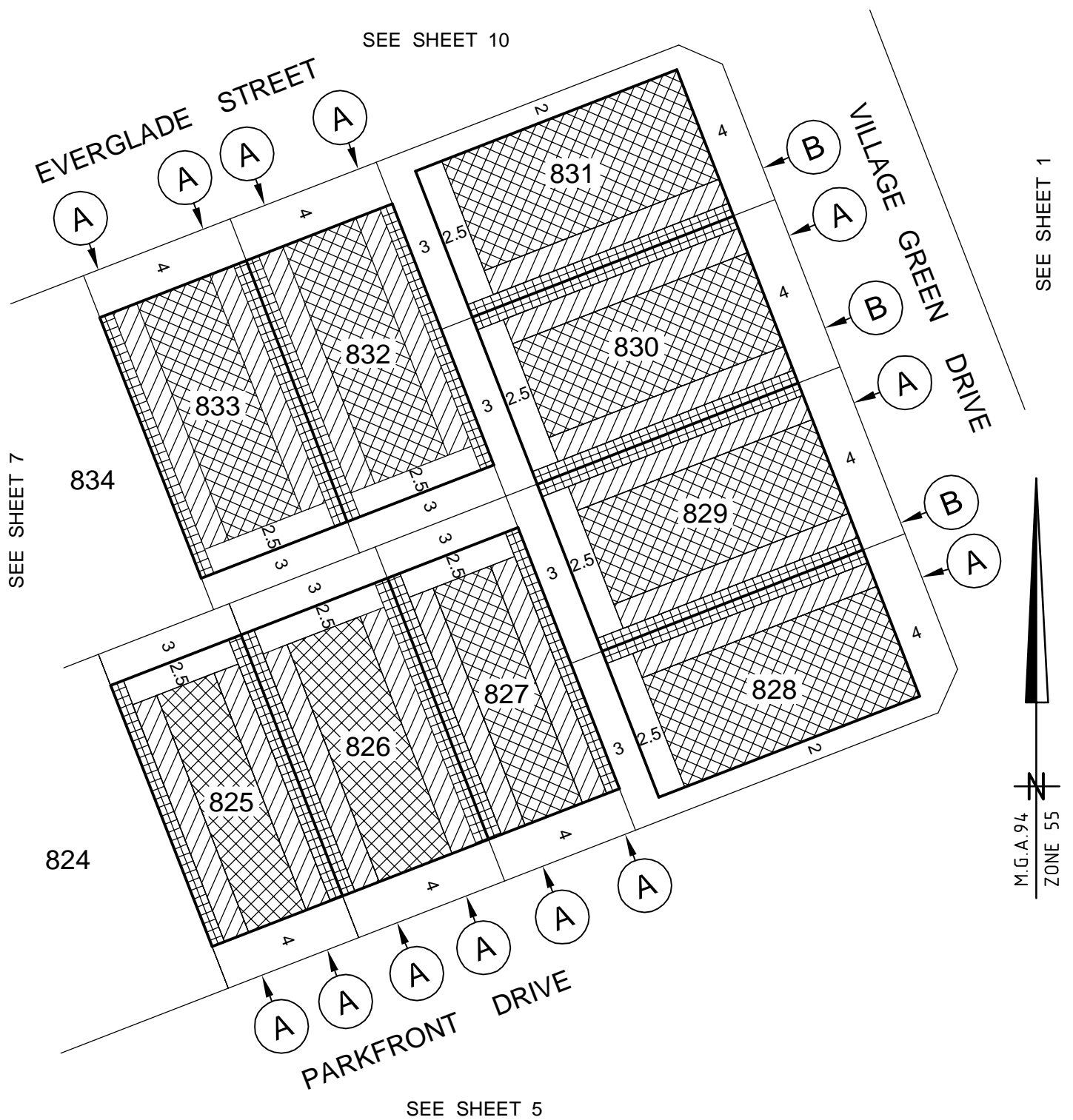


Notations:

- 1 - The Building Envelopes on this plan are shown enclosed by continuous thick lines
- 2 - This diagram is to be read in conjunction with "Profile Diagrams" in this document
- 3 - Profile types (A) & (B) are contained in "Profile Diagrams" in this document

ref: 3440248sEST08  
date: 17 February 2012  
version: J



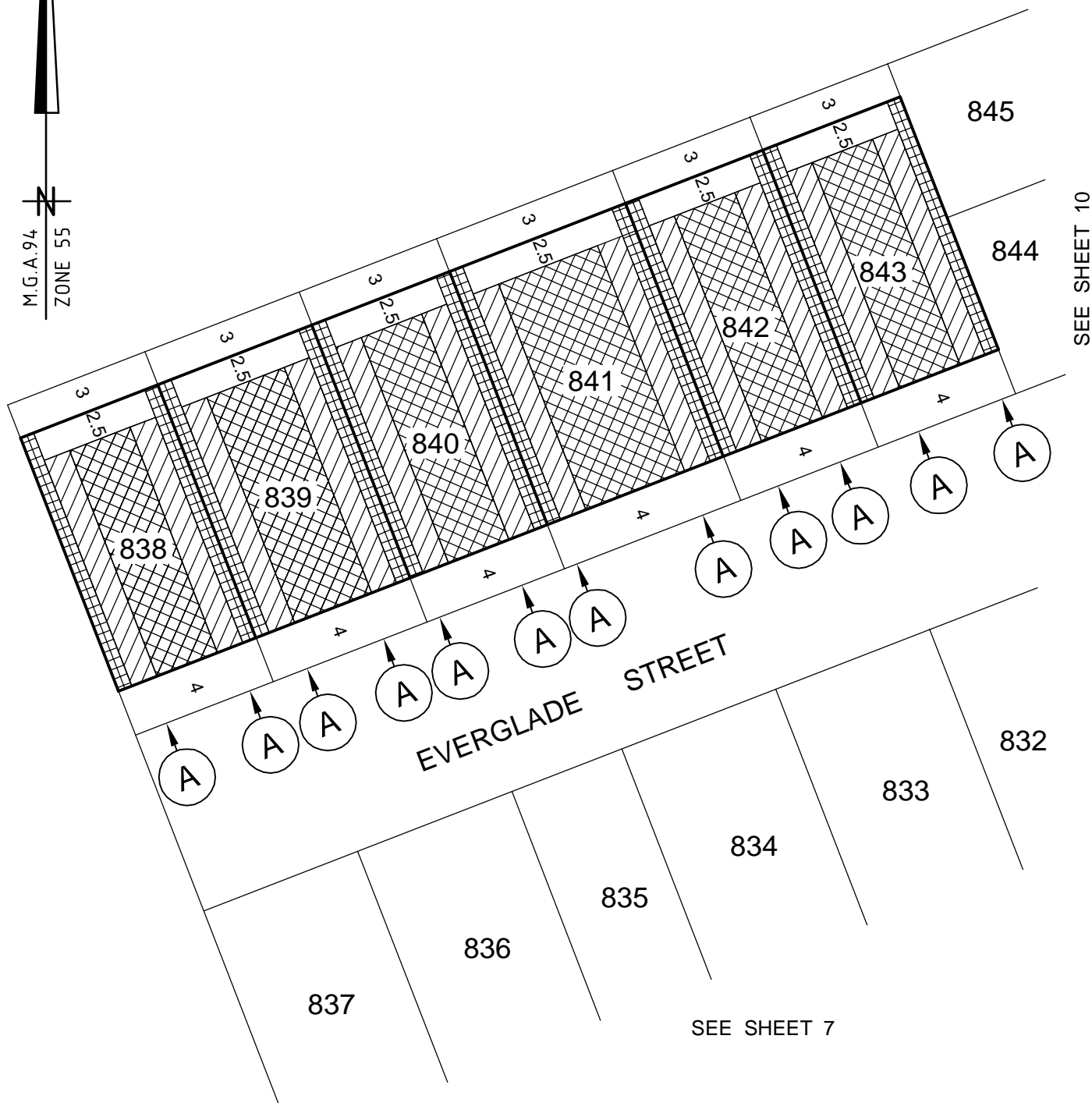
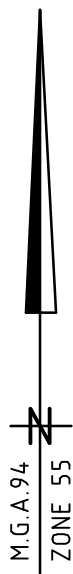


Notations:

- 1 - The Building Envelopes on this plan are shown enclosed by continuous thick lines
- 2 - This diagram is to be read in conjunction with "Profile Diagrams" in this document
- 3 - Profile types (A) & (B) are contained in "Profile Diagrams" in this document

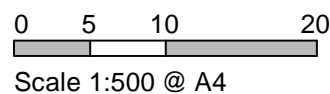
ref: 3440248sEST08  
date: 17 February 2012  
version: J





SEE SHEET 10

SEE SHEET 7



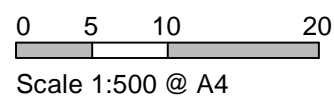
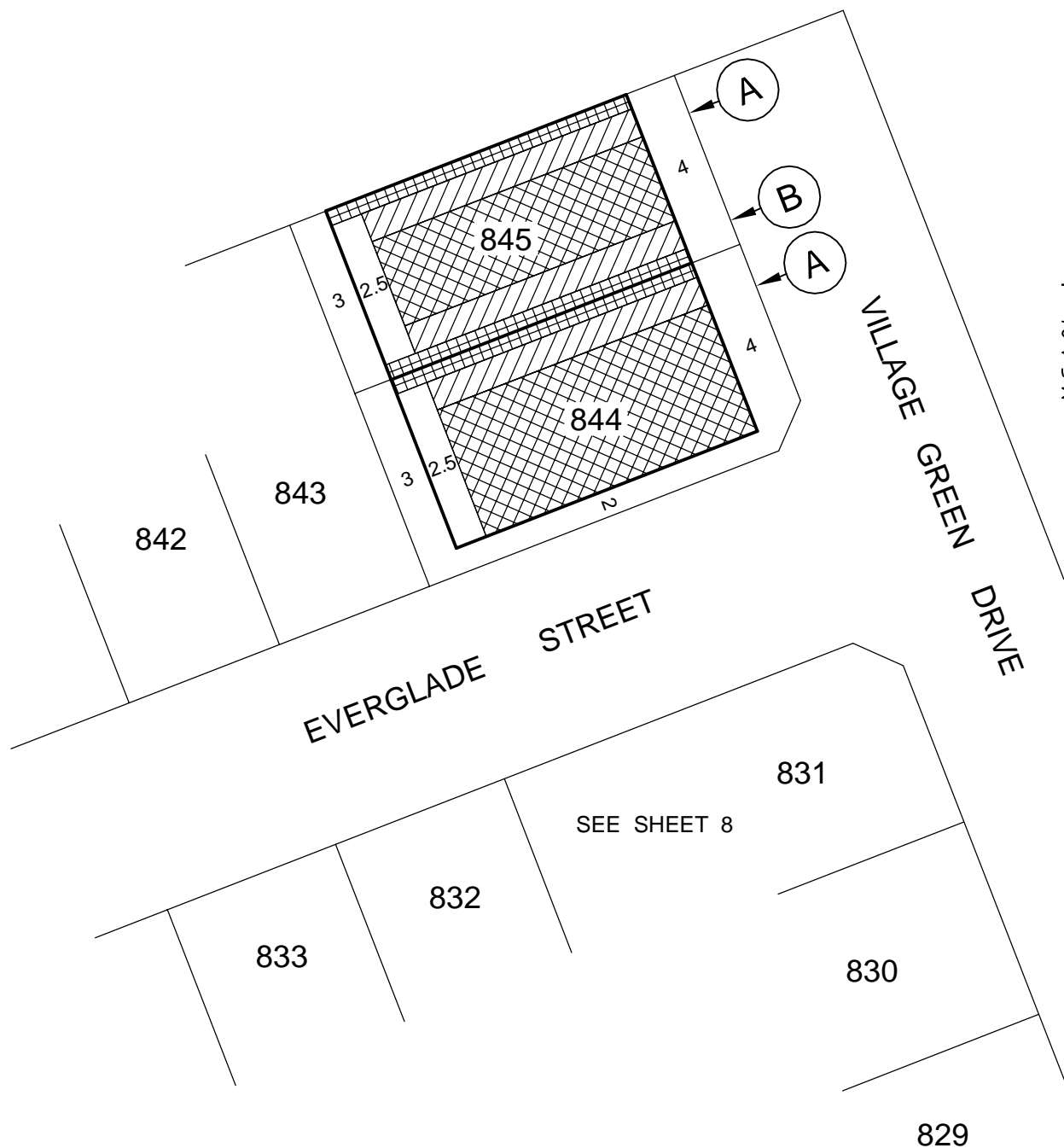
- Notations:
- 1 - The Building Envelopes on this plan are shown enclosed by continuous thick lines
  - 2 - This diagram is to be read in conjunction with "Profile Diagrams" in this document
  - 3 - Profile types (A) & (B) are contained in "Profile Diagrams" in this document

ref: 3440248sEST08  
date: 17 February 2012  
version: J



Geelong Tel +61 3 5228 3100

SEE SHEET 9



- Notations:
- 1 - The Building Envelopes on this plan are shown enclosed by continuous thick lines
  - 2 - This diagram is to be read in conjunction with "Profile Diagrams" in this document
  - 3 - Profile types (A) & (B) are contained in "Profile Diagrams" in this document

ref: 3440248sEST08  
date: 17 February 2012  
version: J