

Our Reference: 2846134  
Planning Permit Number: PA/2010/2849

19 August 2014

Greg Cater  
Senior Landscape Architect  
Ghd  
L 8 180 Lonsdale Street  
Melbourne Vic 3000

Dear Greg,

**Re: Approval of Landscape Plan - Aspire Stage 8 Substation Reserve Landscape**

I write in relation to the abovementioned project and wish to confirm that the landscape plan has been approved by Council.

Please find attached stamped approved landscape plans. Council believes the list below represents the latest editions sent to us for approval.

<u>Drawing No.</u>	<u>Page No.</u>	<u>Revision No.</u>
31-26332	1	B

Please note the following:

- This approval is subject to prior compliance of all statutory and legal obligations by the developer. Also that the developer and their landscape consultants take full responsibility for the design contained in the plans above.
- Council's Engineering Services Unit (Att: Infrastructure Planning Coordinator) must be provided with a letter requesting a pre-commencement meeting prior to starting works.
- The approval of these plans is valid for one year and where landscape works do not commence within that time, the plans must be resubmitted to Council for assessment using landscape standards that apply at that time.
- Any landscape or associated works will not be maintained by Council unless it is on Council land or the land has been transferred to Council.

Should you have any queries regarding this project please feel free to contact me on (03) 9747 5494.

Yours sincerely,



Andrew Hepburn

**LANDSCAPE DEVELOPMENT SUPERVISOR**

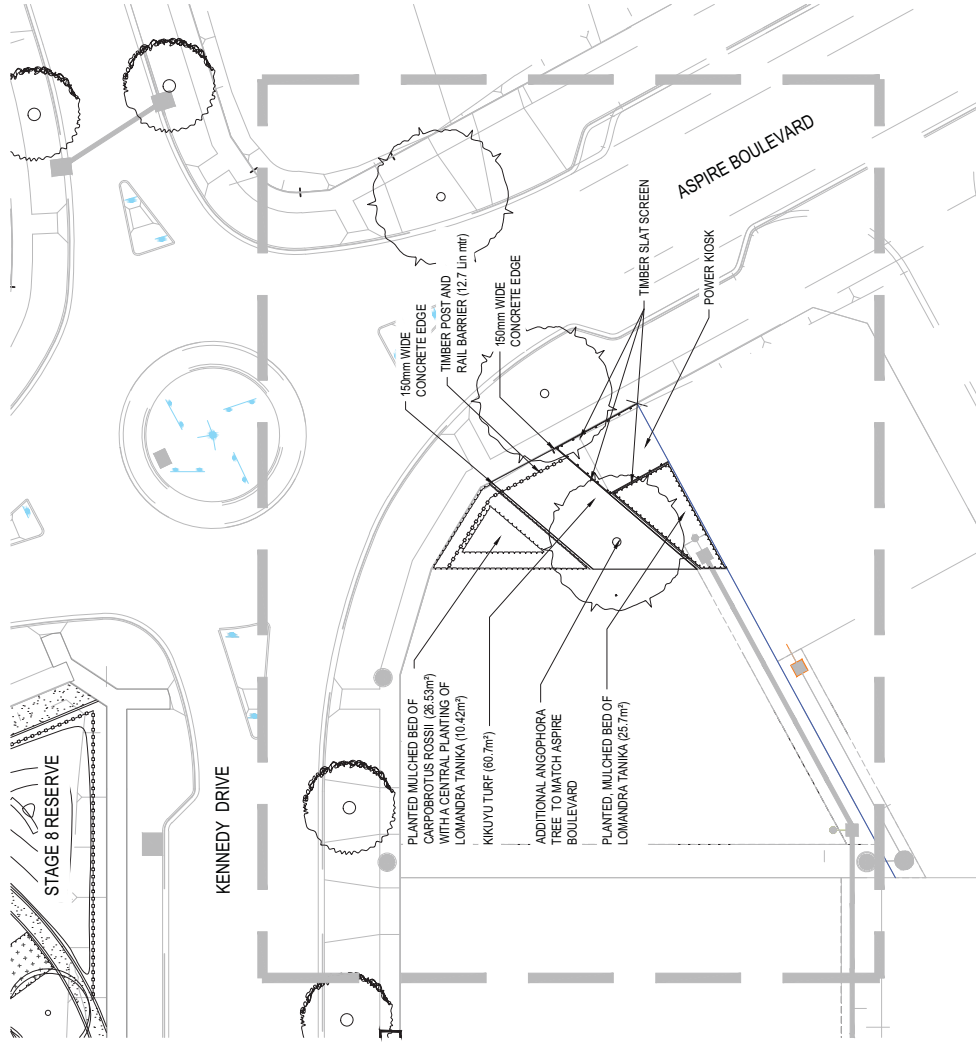
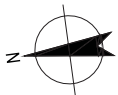
Encl

CC Contractor

Russell Beer (Environmental Services Coordinator) or Rishi Viner (Civil Operations Coordinator)

John Miller (Asset Management Coordinator)

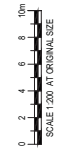
Bronwyn Richards (Principal Construction Supervisor)



LOCATION PLAN  
SCALE 1:200

LEGEND:

- CONCRETE BY CIVIL CONTRACTOR
  - COLOURED CONCRETE PAVEMENT
  - GRANITIC GRAVEL FINISH
  - SQUARE PAVERS
  - GRAZY CUT STONE PAVING
  - TURF
  - GRASS AREAS HYDROSEED
  - MULCHED PLANTED AREAS
  - ORGANIC MULCH
  - COLOURED RUBBER SOFT FALL AREAS
- STAGE BOUNDARY
  - CONTRACTION JOINT AT 3m INTERVAL
  - EXPANSION JOINT AT 12m INTERVAL
  - TIMBER POST AND PANEL FENCE
  - Angophora costata



CITY OF MELTON  
LANDSCAPE DEVELOPMENT PLANS  
**APPROVED**  
19/08/2014  
ENGINEERING SERVICES DATE

PRELIMINARY

Client: **VILLAWOOD PROPERTIES**  
Project: **ASPIRE DEVELOPMENT**  
Title: **STAGE 8 RESERVE POWER KIOSK**  
Drawing No: **31-26332-L814**

Drawn: K. CLEMENTE	Designer: G. CATER	Client: VILLAWOOD PROPERTIES
Drafting Check: Approved (Project Director)	Design Check: Approved (Project Director)	Project: ASPIRE DEVELOPMENT
Scale: 1:300	Scale: 1:300	Title: STAGE 8 RESERVE POWER KIOSK

**DO NOT SCALE**  
Conditions of Use:  
This document may only be used by GHD's client and any other person who has been authorised in writing by GHD for the purpose for which it was prepared and for no other purpose.



Level 6, 1051 Lonsdale Street, Melbourne VIC 3000 Australia  
T 61 3 9877 8000 F 61 3 9877 8111  
E info@ghd.com.au W www.ghd.com

Revision	No.	Date	By	Check	Date
B	ISSUED FOR PRICING	15.08.14	KC	GC	15.08.14
A	ISSUE FOR APPROVAL	25.03.14	KC	GC	25.03.14