

Our Reference: 2977707

15 December 2014

Ivan Bonacci
Breese Pitt Dixon Pty Ltd
U 1 19 Cato Street
Hawthorn East Vic 3123

Dear Ivan,

Re: Aspire Estate stage 9B – Conditional Approval Letter

Please find attached stamped approved road and drainage plans for the abovementioned subdivision. This approval is conditional. The conditions are as follows and must be met prior to the Statement of Compliance being issued:

1. Non standard street lighting fees to be paid.

The approval of the engineering plans is subject to compliance of all statutory and legal obligations. Also, that the engineering consultant and the developer or landowner who they represent takes full responsibility of the design contained in the approved engineering plans.

Council believes the list below represents the latest editions sent to Council for approval.

<u>Drawing No.</u>	<u>Page No.</u>	<u>Revision No.</u>
8226 E/9B	1-6 of 6	A

Also please note the following:

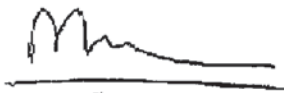
- Council's Engineering Services Unit (Att: Infrastructure Planning Coordinator) must be provided with a letter requesting to start works. This letter must include the Contractor's name and contact details of who are to do the works.
- All Service Authority submissions including Public Lighting, Sewer and Water should be submitted to and approved by the responsible authorities prior to the subbase of the road pavement being constructed.

- 'As constructed' asset information in hardcopy, pdf, autocad and in electronic format in accordance with A-Spec specification must be provided prior to the Statement of Compliance being issued.
- You must convey to the developer and contractor that construction works CANNOT commence until the Haulage Route Plan, Construction Management Plan and where applicable the Environmental Management Plan are endorsed as part of the Planning Permit suite, also that a Traffic Management Plan is submitted and reviewed by Council.
- The approval of these plans is valid for one year, and where construction does not commence within that time, the plans must be resubmitted to Council for assessment using engineering standards that apply at that time.

All correspondence submitted to Council must be accompanied by a cover letter (detailing any changes to plans, and the documents submitted.) Any correspondence submitted to Council without a cover letter will not be accepted.

Should you have any queries regarding this subdivision please feel free to contact me on 9747 7325.

Yours sincerely,

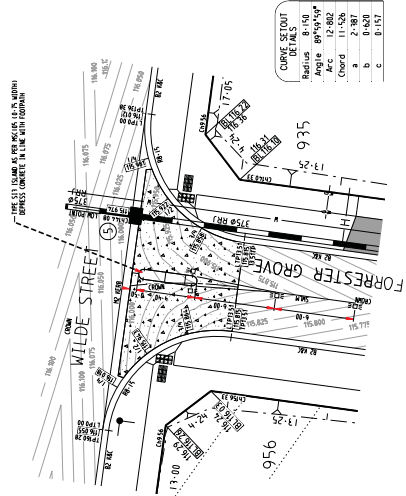


Mangala Jayasinghe

MAJOR PROJECTS AND DEVELOPMENT ENGINEER

Encl

Cc Carlos Lopez (Construction Supervisor)
Judith Stephen (Infrastructure Planning Administration Officer)
Loc Ly (Strategic Asset Management Officer) (via email)



CURVE SETOUT DETAILS

Radius	8.193
APC	12.802
Chord	11.526
a	2.387
b	2.387
c	0.157

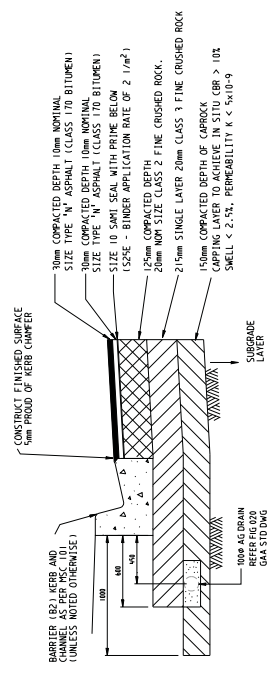
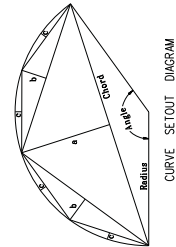
CURVE SETOUT DETAILS

Radius	8.193
APC	12.802
Chord	11.526
a	2.387
b	2.387
c	0.157

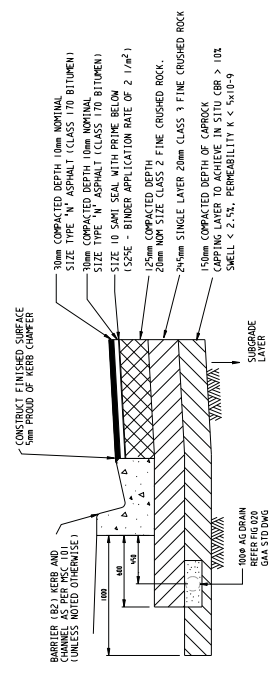
INTERSECTION DETAILS
SCALE 1:200

NOTES

- a) LEVELS AT BUILDING LINE SHOWN THIS [Symbol]
- b) PAVEMENT LEVELS SHOWN THIS [Symbol]
- c) ALL STONS TO BE SLEEVED USING A S427 SLEEVE.
- d) SWM - INDICATES SOLID WHITE "LONGLIFE" LINE MARKING
BHM - INDICATES BROWN WHITE "LONGLIFE" LINE MARKING
- e) CH [Symbol] INDICATES UNIDIRECTIONAL & BIDIRECTIONAL RPPMS PLACED AT 6-10m CTS
- f) HAZARD / DIRECTIONAL TOST'S SHOWN THIS [Symbol] AND FOOTPATH RAMPS SHALL BE CONSTRUCTED IN ACCORDANCE WITH TROPICAL STD DWG S02811 TO S02813. TOST'S SHALL CONFORM TO AS 2885.1.
- g) RETURN & ELBOW LIP OF KERB CHANGES PREFIXED WITH AN "L" (eg. L1P15.83)
- h) SAND BLASTED CONCRETE FOR INTERSECTIONS SHOWN THIS [Symbol] TO CONSIST OF:
 - a) 200mm DEPTH 25MPa CONCRETE, REINFORCED WITH 2 LAYERS OF S482 MESH (1.50m COVER), SANDBLASTED 24 HRS AFTER.
 - b) BALANCE OF PAVEMENT.
- i) SAND BLASTED CONCRETE TO BE DOMELLED INTO ADJACENT KERB AND CHANNEL AT 300mm CTS USING 450mm LONG S12 BARS, ONE END OF DOMEL TO BE SLEEVED OR GREASED.



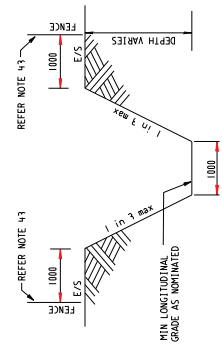
PAVEMENT COMPOSITION
NOT TO SCALE



PAVEMENT COMPOSITION
NOT TO SCALE

SIGNAGE LEGEND

- [Symbol] NO ROAD SIGN
- [Symbol] BI-DIRECTIONAL CHEVRON SIGNS (Dh-2-1)

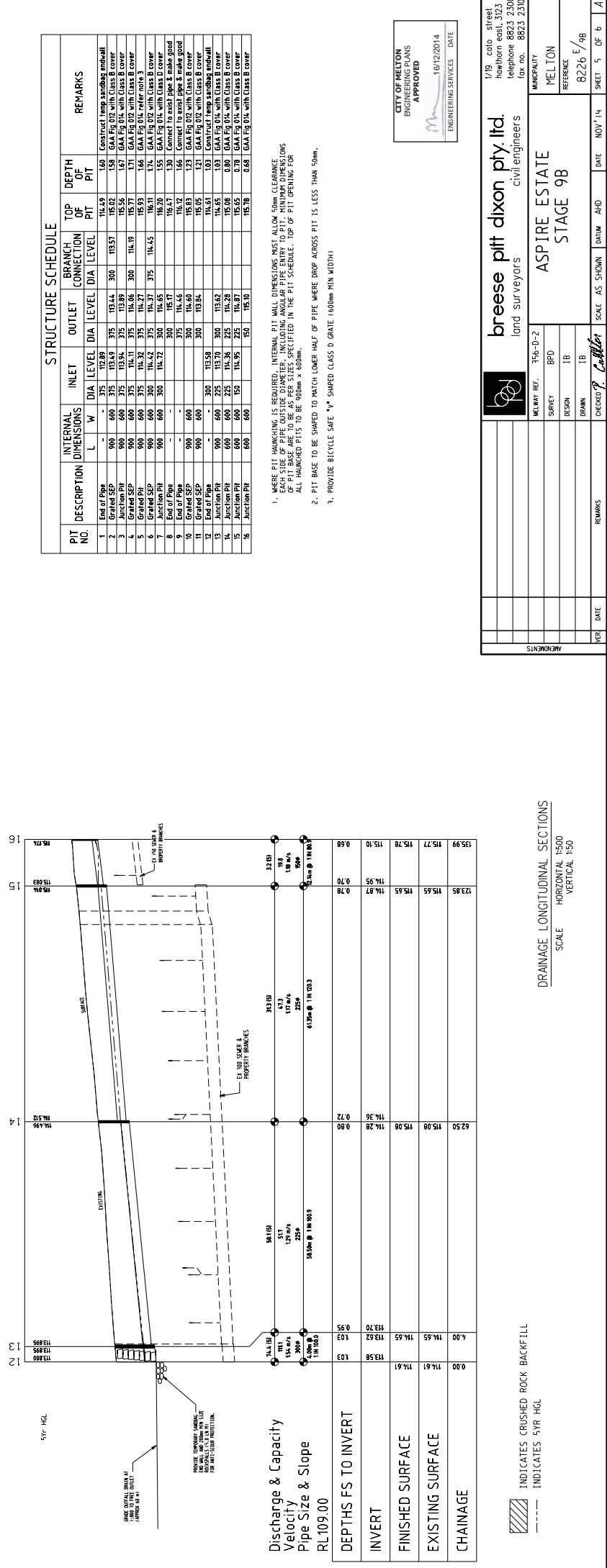
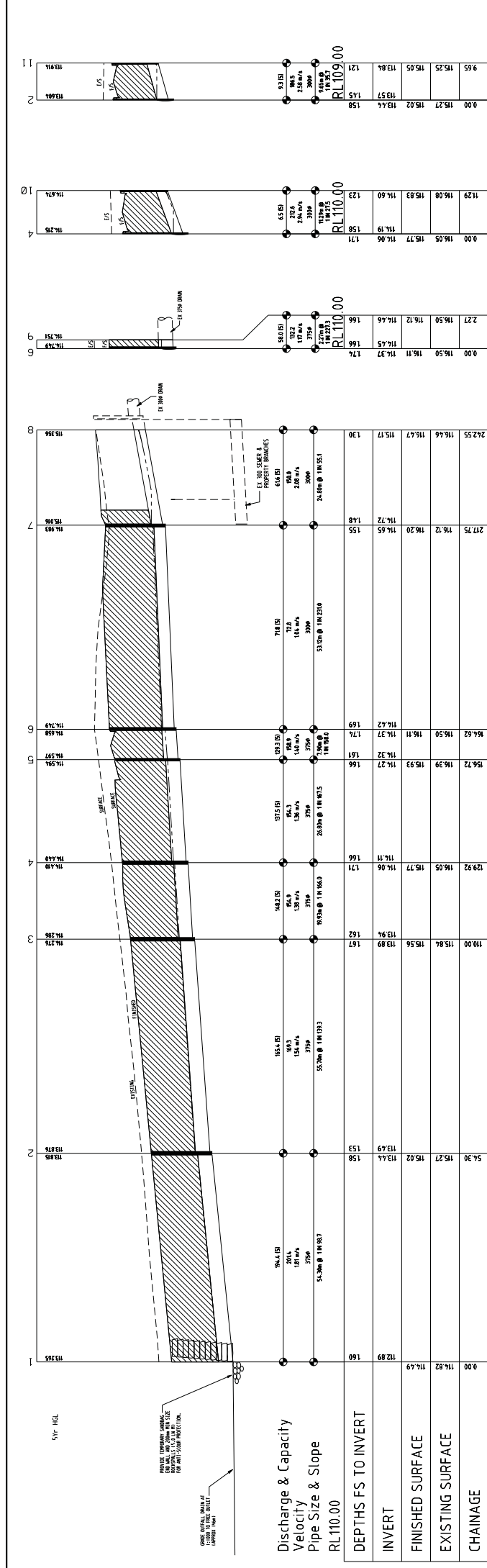


TEMPORARY OUTFALL CHANNEL DETAIL
(Dimensions in millimetres)
(N.T.S.)

		brese pitt dixon pty ltd. land surveyors civil engineers		1/19 cato street hamilton east, 3123 telephone 8623 2300 fax no. 8623 2310	
		ASPIRE ESTATE STAGE 9B		MUNICIPALITY MELTON	
MEYWAY REF. 356-D-2		SURVEY BFD		REFERENCE 8226 E/9B	
DESIGN IB		DRAWN IB		DATE NOV 14	
CHECKED <i>[Signature]</i>		SCALE AS SHOWN		SHEET 2 OF 6	
REMARKS		DATE		1:2000 (AS SHOWN)	

SYMBOL LEGEND

Drains	Excavation/Fill Level	Prop/Exc
Sewer 450	FS Building Line	100yr Flood Level
Water	Top of Kerb	100yr Flood Level
House Drain	Top Ret. Wall Level	Fill Prop/Exc
Street Sign	100yr Flood Level	Ch Prop/Exc
Prop	100yr Flood Level	
Excavation	100yr Flood Level	
Conduits 100mm		
Excavation		



STRUCTURE SCHEDULE

PIT NO	INTERNAL DIMENSIONS		INLET DIA	LEVEL	OUTLET DIA	LEVEL	BRANCH CONNECTION DIA	LEVEL	TOP OF PIT	DEPTH OF PIT	REMARKS
	L	W									
1	End of Pipe	-	375	112.89	-	-	-	-	114.49	1.60	Construct temp sanding and wall
2	Grated S/P	900	600	375	113.44	300	113.57	115.02	115.02	0.00	GAA F10 D15 with Class B cover
3	Grated S/P	900	600	375	113.44	300	113.57	115.02	115.02	0.00	GAA F10 D15 with Class B cover
4	Grated S/P	900	600	375	113.44	300	113.57	115.02	115.02	0.00	GAA F10 D15 with Class B cover
5	Grated S/P	900	600	375	113.44	300	113.57	115.02	115.02	0.00	GAA F10 D15 with Class B cover
6	Grated S/P	900	600	375	113.44	300	113.57	115.02	115.02	0.00	GAA F10 D15 with Class B cover
7	Grated S/P	900	600	375	113.44	300	113.57	115.02	115.02	0.00	GAA F10 D15 with Class B cover
8	End of Pipe	-	375	112.89	-	-	-	114.49	1.60	Connect to exist pipe & make good	
9	End of Pipe	-	375	112.89	-	-	-	114.49	1.60	Connect to exist pipe & make good	
10	End of Pipe	-	375	112.89	-	-	-	114.49	1.60	Connect to exist pipe & make good	
11	Grated S/P	900	600	375	113.44	300	113.57	115.02	115.02	0.00	GAA F10 D15 with Class B cover
12	Grated S/P	900	600	375	113.44	300	113.57	115.02	115.02	0.00	GAA F10 D15 with Class B cover
13	Grated S/P	900	600	375	113.44	300	113.57	115.02	115.02	0.00	GAA F10 D15 with Class B cover
14	Grated S/P	900	600	375	113.44	300	113.57	115.02	115.02	0.00	GAA F10 D15 with Class B cover
15	Grated S/P	900	600	375	113.44	300	113.57	115.02	115.02	0.00	GAA F10 D15 with Class B cover
16	Grated S/P	900	600	375	113.44	300	113.57	115.02	115.02	0.00	GAA F10 D15 with Class B cover

- WHERE PIT HAUNCHING IS REQUIRED, INTERNAL PIT WALL DIMENSIONS MUST ALLOW 50mm CLEARANCE BETWEEN PIT WALLS AND EXISTING PIT WALLS. ALL PIT BASES ARE TO BE 900mm x 900mm. ALL HAUNCHES ARE TO BE 900mm x 900mm.
- PIT BASE TO BE SHAPED TO MATCH LOWER HALF OF PIPE WHERE DROP ACROSS PIT IS LESS THAN 50mm.
- PROVIDE BICYCLE SAFE "V" SHAPED CLASS D GRATE (1000mm MIN WIDTH)

CITY OF MELTON
ENGINEERING SERVICES
APPROVED
16/12/2014
ENGINEERING SERVICES DATE

1/19 cato street
hamilton east, 3123
telephone 8623 2300
fax no. - 8623 2310

brees pitt dixon ply ltd.
land surveyors
civil engineers

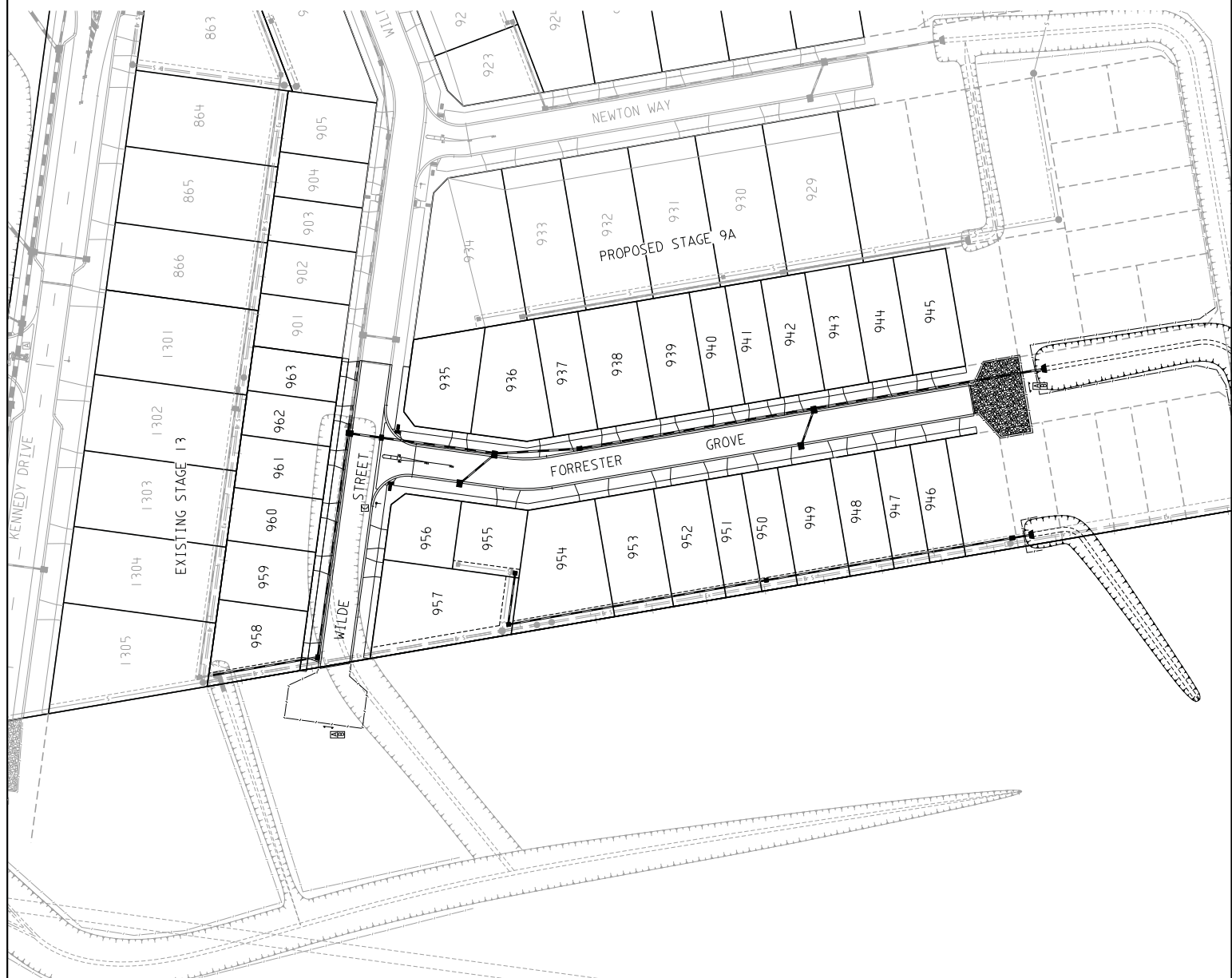
MELTON
REFERENCE
8226 E/9B

MELTON
ASPIRE ESTATE
STAGE 9B

SCALE: AS SHOWN
DATE: NOV '14
SHEET 5 OF 6

DRAINAGE LONGITUDINAL SECTIONS
SCALE: HORIZONTAL 1:500
VERTICAL 1:50

INDICATES CRUSHED ROCK BACKFILL
INDICATES 5YR HGL



SIGNAGE LEGEND

- A NO ROAD SIGN
- B BI-DIRECTIONAL CHEVRON SIGNS (DN-2-1)
- C STREET SIGNS

CITY OF MELTON
ENGINEERING PLANS
APPROVED
16/12/2014
ENGINEERING SERVICES DATE

SYMBOL LEGEND

Drains	Box	Ex/Mature/F5 Level	Top of Building Line
Street	Top of Kerb	Top of Ret. Wall Level	100yr Flood Level
Water	House Drain	Proposed Wall	Conduits 50mm
House Drain	Street Sign	Conduits 100mm	Ex. Grap/Elect/Fei
Water	Proposed	Col. Prop/EK	

LINE MARKING & SIGNAGE PLAN
SCALE 1:500

		1/19 cato street howtown east, 3123 telephone 8623 2300 fax no. 8623 2310		MUNICIPALITY MELTON	
		land surveyors		REFERENCE 8226 E/9B	
ASPIRE ESTATE STAGE 9B		SHEET 6 OF 6		DATE NOV '14	
356-D-2		SURVEY BFD		SCALE AS SHOWN DATUM AHD	
DESIGN IB		DRAWN IB		CHECKED <i>C. Collier</i>	
REMARKS		DATE		DRAWN BY	
APPROVED		DATE		DRAWN BY	