


Controlled Fill Certificate



**Certificate of Controlled Filling
Earthworks Operations (AS3798 – Level 1 Inspection & Testing)
AGTE240310, William Lakes Stage 7
Lot 731**



 Level 1 Site Area

The filling in the areas as defined above and in the Level 1 Report pertaining to the above mentioned project meets the requirements for “structural fill for residential applications” in accordance with AS3798. The fill has been placed, compacted and tested in accordance with AS3798 and the fill meets the requirements for controlled fill in accordance with AS2870 (2011) “Residential Slabs and Footings”.

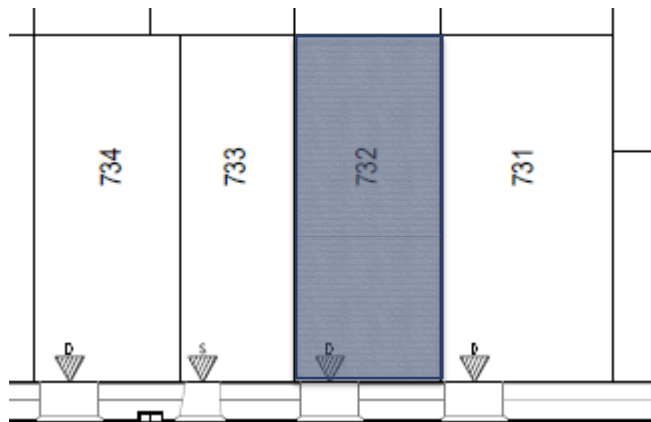



Shin To Amiri
Senior Geotechnical Engineer
MIE Aust (EA ID: 6820691)
Ph.D. (Geotechnical Engineering),
M.Eng. (Geotechnical Engineering)
B.Eng. (Civil Engineering)
shina@ausgeotest.com.au
Mob: 0448597976

Controlled Fill Certificate



**Certificate of Controlled Filling
Earthworks Operations (AS3798 – Level 1 Inspection & Testing)
AGTE240310, William Lakes Stage 7
Lot 732**



 Level 1 Site Area

The filling in the areas as defined above and in the Level 1 Report pertaining to the above mentioned project meets the requirements for “structural fill for residential applications” in accordance with AS3798. The fill has been placed, compacted and tested in accordance with AS3798 and the fill meets the requirements for controlled fill in accordance with AS2870 (2011) “Residential Slabs and Footings”.

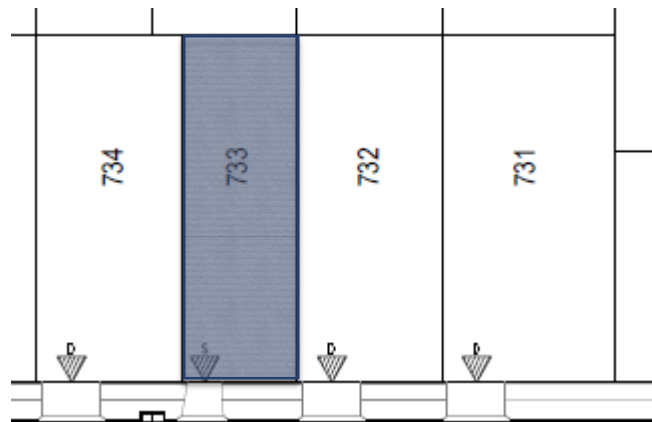



Shin To Amiri
Senior Geotechnical Engineer
MIE Aust (EA ID: 6820691)
Ph.D. (Geotechnical Engineering),
M.Eng. (Geotechnical Engineering)
B.Eng. (Civil Engineering)
shina@ausgeotest.com.au
Mob: 0448597976

Controlled Fill Certificate



**Certificate of Controlled Filling
Earthworks Operations (AS3798 – Level 1 Inspection & Testing)
AGTE240310, William Lakes Stage 7
Lot 733**



 Level 1 Site Area

The filling in the areas as defined above and in the Level 1 Report pertaining to the above mentioned project meets the requirements for “structural fill for residential applications” in accordance with AS3798. The fill has been placed, compacted and tested in accordance with AS3798 and the fill meets the requirements for controlled fill in accordance with AS2870 (2011) “Residential Slabs and Footings”.

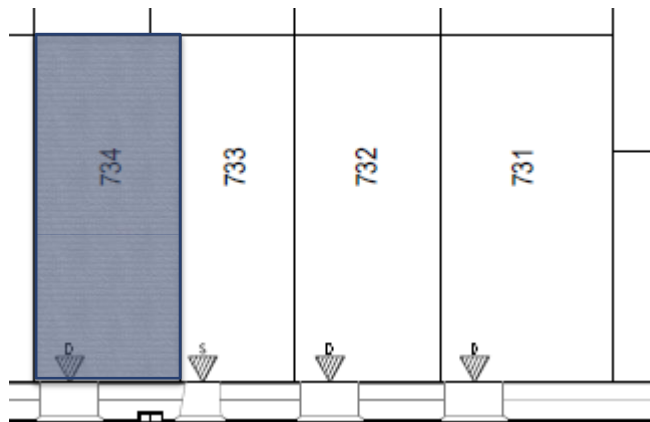



Shin To Amiri
Senior Geotechnical Engineer
MIE Aust (EA ID: 6820691)
Ph.D. (Geotechnical Engineering),
M.Eng. (Geotechnical Engineering)
B.Eng. (Civil Engineering)
shina@ausgeotest.com.au
Mob: 0448597976

Controlled Fill Certificate



**Certificate of Controlled Filling
Earthworks Operations (AS3798 – Level 1 Inspection & Testing)
AGTE240310, William Lakes Stage 7
Lot 734**



 Level 1 Site Area

The filling in the areas as defined above and in the Level 1 Report pertaining to the above mentioned project meets the requirements for “structural fill for residential applications” in accordance with AS3798. The fill has been placed, compacted and tested in accordance with AS3798 and the fill meets the requirements for controlled fill in accordance with AS2870 (2011) “Residential Slabs and Footings”.

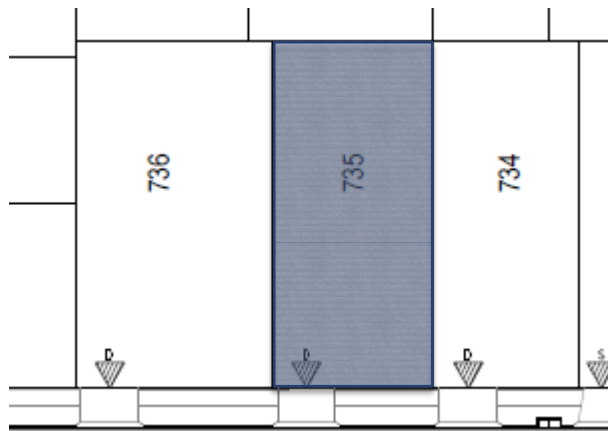



Shin To Amiri
Senior Geotechnical Engineer
MIE Aust (EA ID: 6820691)
Ph.D. (Geotechnical Engineering),
M.Eng. (Geotechnical Engineering)
B.Eng. (Civil Engineering)
shina@ausgeotest.com.au
Mob: 0448597976

Controlled Fill Certificate



**Certificate of Controlled Filling
Earthworks Operations (AS3798 – Level 1 Inspection & Testing)
AGTE240310, William Lakes Stage 7
Lot 735**



 Level 1 Site Area

The filling in the areas as defined above and in the Level 1 Report pertaining to the above mentioned project meets the requirements for “structural fill for residential applications” in accordance with AS3798. The fill has been placed, compacted and tested in accordance with AS3798 and the fill meets the requirements for controlled fill in accordance with AS2870 (2011) “Residential Slabs and Footings”.

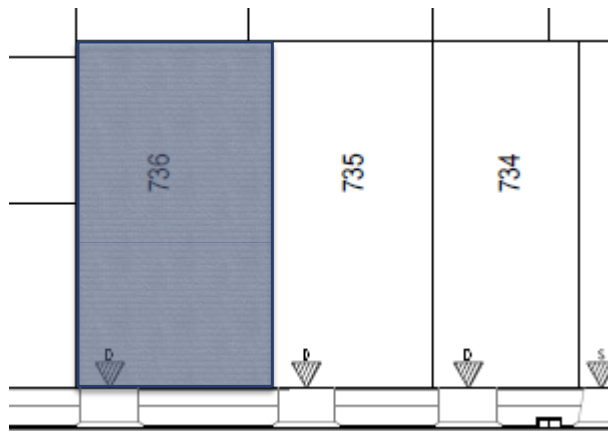



Shin To Amiri
Senior Geotechnical Engineer
MIE Aust (EA ID: 6820691)
Ph.D. (Geotechnical Engineering),
M.Eng. (Geotechnical Engineering)
B.Eng. (Civil Engineering)
shina@ausgeotest.com.au
Mob: 0448597976

Controlled Fill Certificate



**Certificate of Controlled Filling
Earthworks Operations (AS3798 – Level 1 Inspection & Testing)
AGTE240310, William Lakes Stage 7
Lot 736**



 Level 1 Site Area

The filling in the areas as defined above and in the Level 1 Report pertaining to the above mentioned project meets the requirements for “structural fill for residential applications” in accordance with AS3798. The fill has been placed, compacted and tested in accordance with AS3798 and the fill meets the requirements for controlled fill in accordance with AS2870 (2011) “Residential Slabs and Footings”.

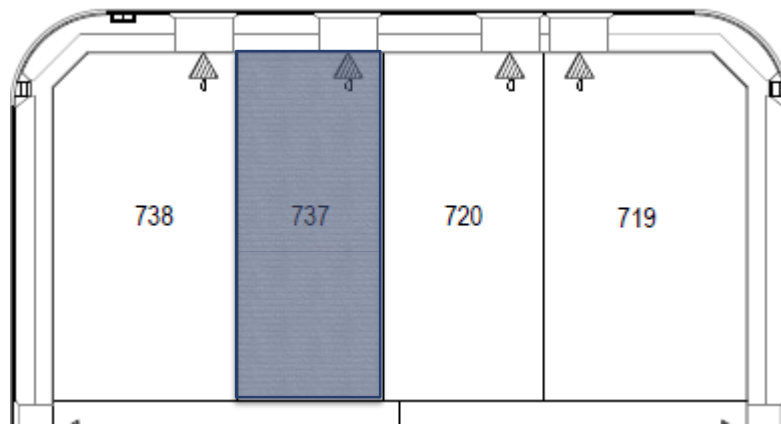



Shin To Amiri
Senior Geotechnical Engineer
MIE Aust (EA ID: 6820691)
Ph.D. (Geotechnical Engineering),
M.Eng. (Geotechnical Engineering)
B.Eng. (Civil Engineering)
shina@ausgeotest.com.au
Mob: 0448597976

Controlled Fill Certificate



**Certificate of Controlled Filling
Earthworks Operations (AS3798 – Level 1 Inspection & Testing)
AGTE240310, William Lakes Stage 7
Lot 737**



 Level 1 Site Area

The filling in the areas as defined above and in the Level 1 Report pertaining to the above mentioned project meets the requirements for “structural fill for residential applications” in accordance with AS3798. The fill has been placed, compacted and tested in accordance with AS3798 and the fill meets the requirements for controlled fill in accordance with AS2870 (2011) “Residential Slabs and Footings”.

A handwritten signature in blue ink, appearing to read 'Shin To Amiri', with a stylized arrow pointing to the right.

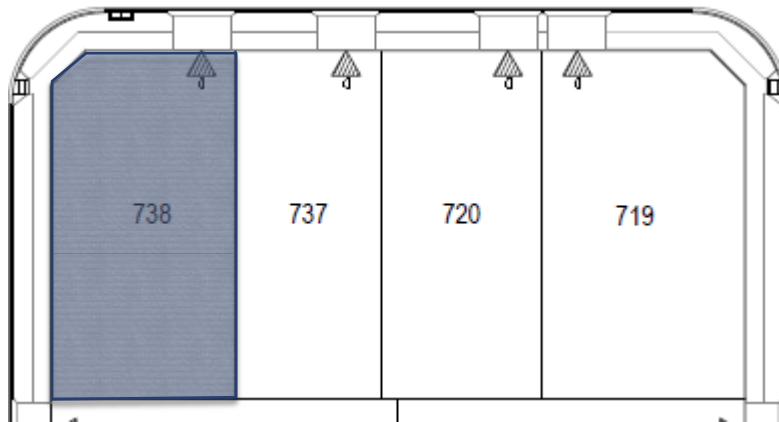



Shin To Amiri
Senior Geotechnical Engineer
MIE Aust (EA ID: 6820691)
Ph.D. (Geotechnical Engineering),
M.Eng. (Geotechnical Engineering)
B.Eng. (Civil Engineering)
shina@ausgeotest.com.au
Mob: 0448597976

Controlled Fill Certificate



**Certificate of Controlled Filling
Earthworks Operations (AS3798 – Level 1 Inspection & Testing)
AGTE240310, William Lakes Stage 7
Lot 738**



 Level 1 Site Area

The filling in the areas as defined above and in the Level 1 Report pertaining to the above mentioned project meets the requirements for “structural fill for residential applications” in accordance with AS3798. The fill has been placed, compacted and tested in accordance with AS3798 and the fill meets the requirements for controlled fill in accordance with AS2870 (2011) “Residential Slabs and Footings”.

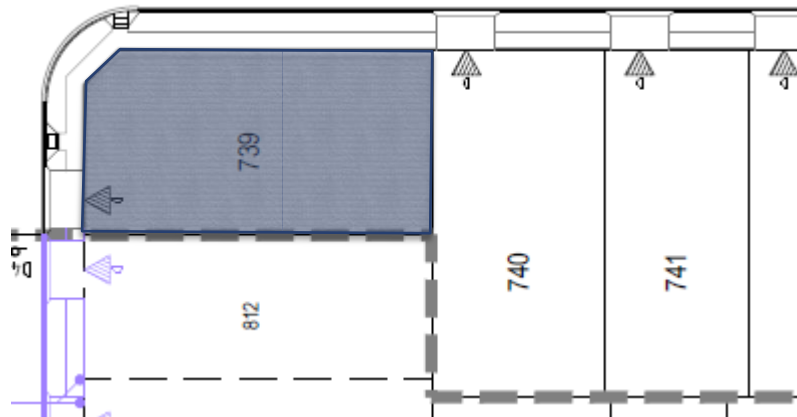


Shin To Amiri
Senior Geotechnical Engineer
MIE Aust (EA ID: 6820691)
Ph.D. (Geotechnical Engineering),
M.Eng. (Geotechnical Engineering)
B.Eng. (Civil Engineering)
shina@ausgeotest.com.au
Mob: 0448597976

Controlled Fill Certificate



Certificate of Controlled Filling
Earthworks Operations (AS3798 – Level 1 Inspection & Testing)
AGTE240310, William Lakes Stage 7
Lot 739



 Level 1 Site Area

The filling in the areas as defined above and in the Level 1 Report pertaining to the above mentioned project meets the requirements for “structural fill for residential applications” in accordance with AS3798. The fill has been placed, compacted and tested in accordance with AS3798 and the fill meets the requirements for controlled fill in accordance with AS2870 (2011) “Residential Slabs and Footings”.

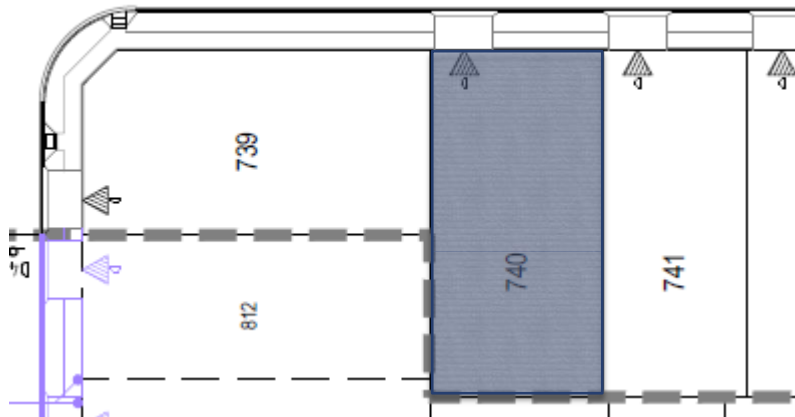



Shin To Amiri
Senior Geotechnical Engineer
MIE Aust (EA ID: 6820691)
Ph.D. (Geotechnical Engineering),
M.Eng. (Geotechnical Engineering)
B.Eng. (Civil Engineering)
shina@ausgeotest.com.au
Mob: 0448597976

Controlled Fill Certificate



Certificate of Controlled Filling
Earthworks Operations (AS3798 – Level 1 Inspection & Testing)
AGTE240310, William Lakes Stage 7
Lot 740



 Level 1 Site Area

The filling in the areas as defined above and in the Level 1 Report pertaining to the above mentioned project meets the requirements for “structural fill for residential applications” in accordance with AS3798. The fill has been placed, compacted and tested in accordance with AS3798 and the fill meets the requirements for controlled fill in accordance with AS2870 (2011) “Residential Slabs and Footings”.



Shin To Amiri
Senior Geotechnical Engineer
MIE Aust (EA ID: 6820691)
Ph.D. (Geotechnical Engineering),
M.Eng. (Geotechnical Engineering)
B.Eng. (Civil Engineering)
shina@ausgeotest.com.au
Mob: 0448597976