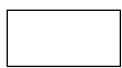
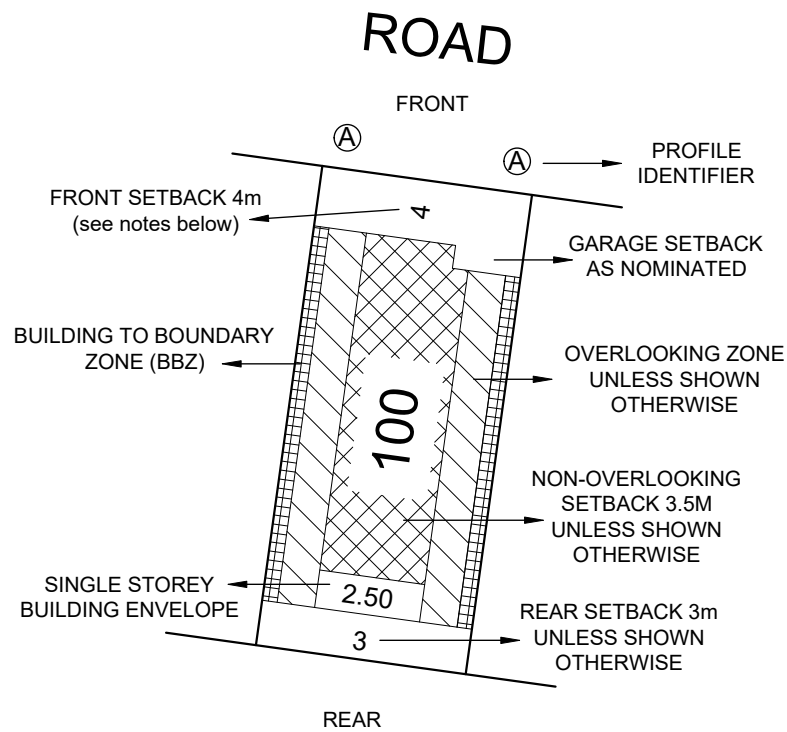


WANDANA STAGE 5 BUILDING ENVELOPE PLAN

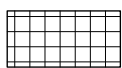
SEE PLAN OF SUBDIVISION PS816138V

LEGEND

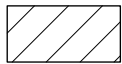
EXAMPLE OF TYPICAL BUILDING ENVELOPE SETBACK



SINGLE STOREY BUILDING ENVELOPE (WALL HEIGHT NOT EXCEEDING 3.6m)



BUILDING TO BOUNDARY ZONE (BBZ)



OVERLOOKING ZONE - Habitable room windows or raised open spaces are a source of overlooking



NON OVERLOOKING ZONE - Habitable room windows or raised open spaces are not a source of overlooking

THE REGISTERED PROPRIETOR OR PROPRIETORS OF THE LOT ARE REQUIRED TO BUILD IN ACCORDANCE WITH THE APPROVED BUILDING ENVELOPES SHOWN HEREON AND IN THE "PROFILE DIAGRAMS" IN THIS DOCUMENT.

NOTATIONS:

- THE FRONT AND SIDE SETBACKS ARE MEASURED TO THE OUTERMOST WALLS OF THE BUILDING.
- GARAGES MUST BE SETBACK A MINIMUM OF 5.0m FROM THE FRONT STREET BOUNDARY UNLESS OTHERWISE NOTED
- WALLS LESS THAN 1.0m FROM THE BOUNDARY MUST BE WITHIN 200mm OF THE BOUNDARY.
- THE SETBACK TO A SIDE STREET BOUNDARY FOR A CORNER LOT IS 2m UNLESS NOTED OTHERWISE.
- PORCHES AND VERANDAHS CAN ENCROACH INTO THE FRONT SETBACK BY UP TO 1.5m AT HEIGHTS OF UP TO 4m.



LyssnaGroup.com

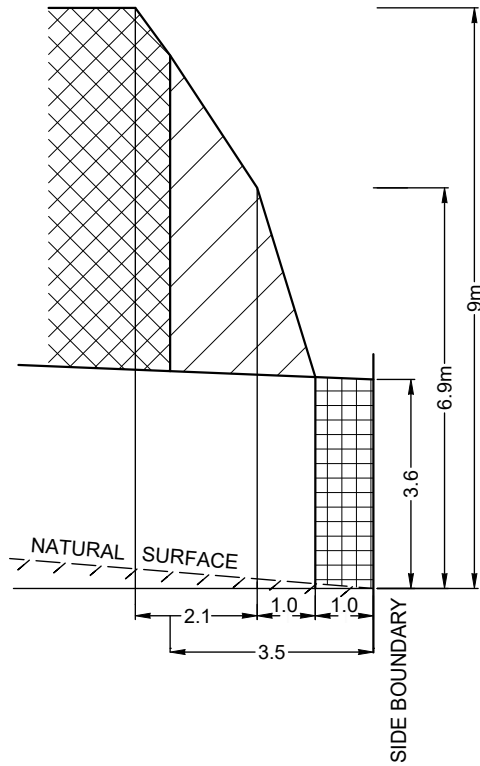
Lyssna Group Pty Ltd
 ABN 18 616 811 191
 Tel: +61 3 9516 6899
 PO Box 1098, South Melbourne 3205
 Suite 3, 102 Dodds Street
 Southbank VIC 3006 Australia

Sheet 1 of 4
 Version 4
 Drawing Date 05/05/20
 Job Number AA0074
 Drawing Number BE05AF
 Drawn By LS

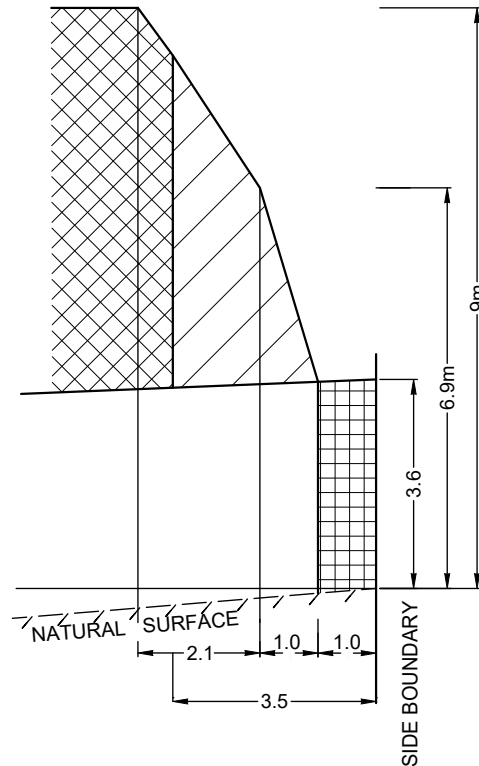
LEGEND CONTINUED

PROFILE DIAGRAM

(A) PROFILE

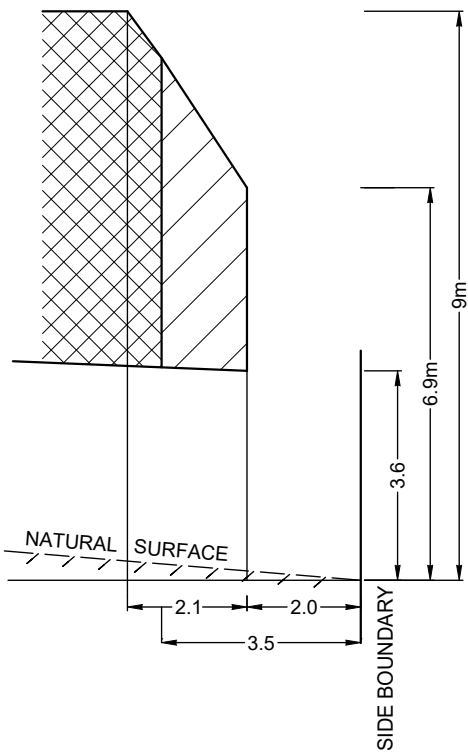


NATURAL SURFACE RISING FROM SIDE BOUNDARY

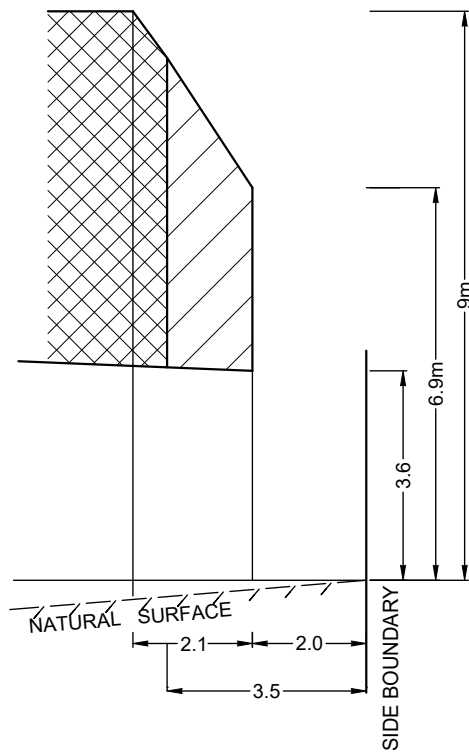


NATURAL SURFACE FALLING FROM SIDE BOUNDARY

(B) PROFILE

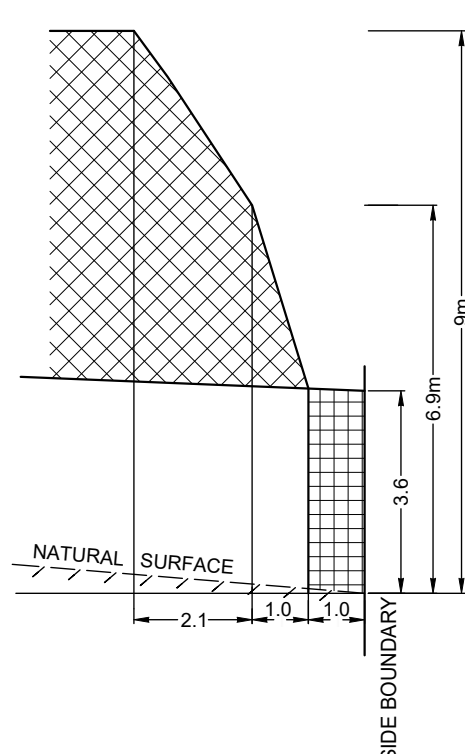


NATURAL SURFACE RISING FROM SIDE BOUNDARY

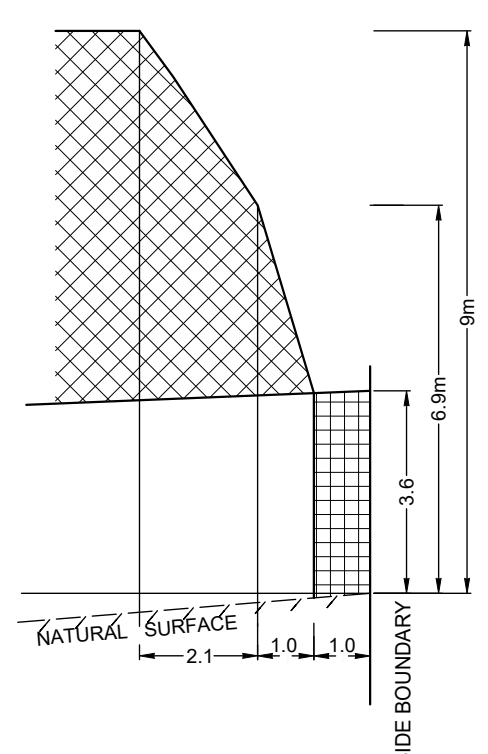


NATURAL SURFACE FALLING FROM SIDE BOUNDARY

(C) PROFILE

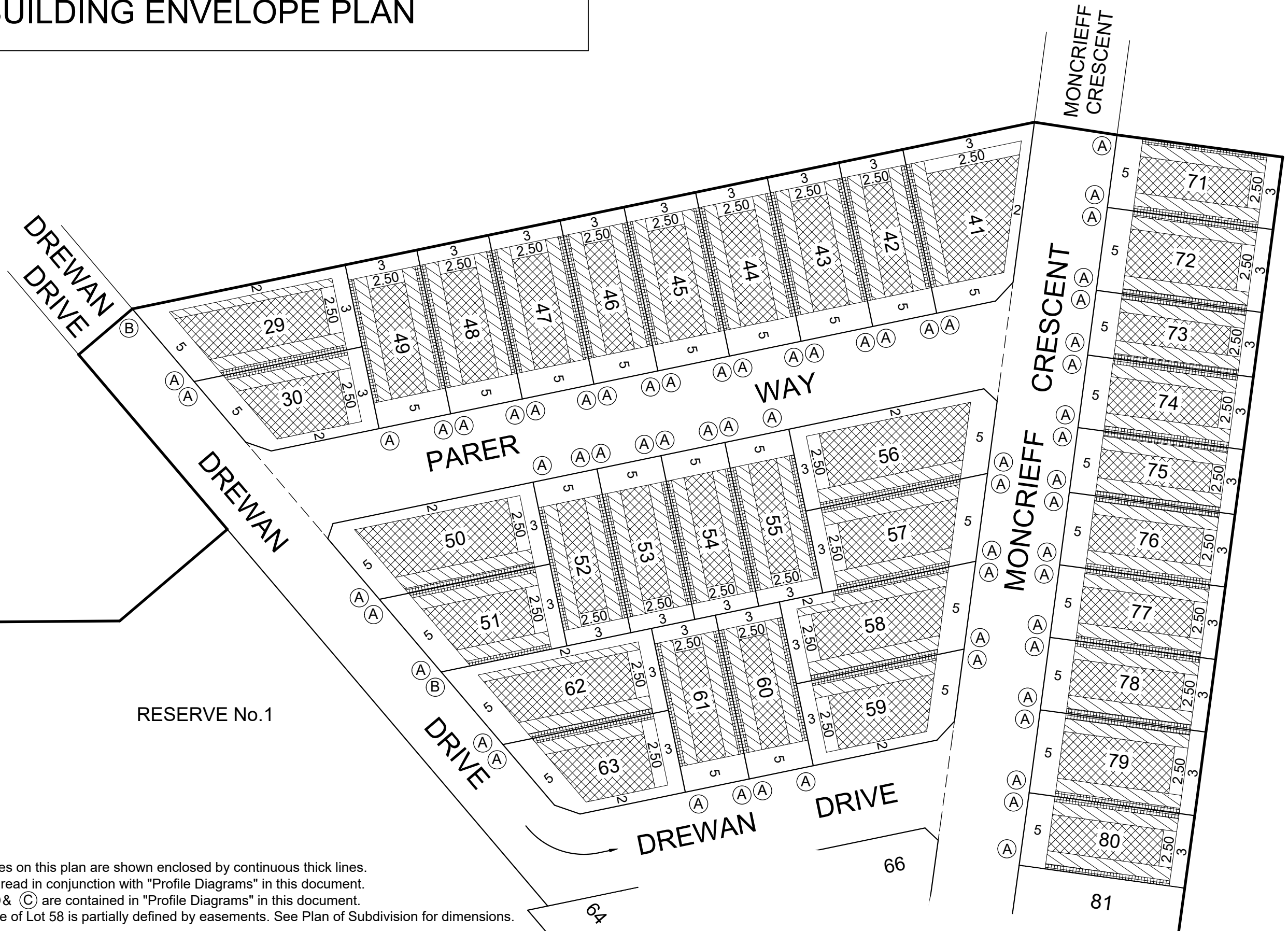


NATURAL SURFACE RISING FROM SIDE BOUNDARY



NATURAL SURFACE FALLING FROM SIDE BOUNDARY

BUILDING ENVELOPE PLAN



- Notations:
- 1) The Building Envelopes on this plan are shown enclosed by continuous thick lines.
 - 2) This diagram is to be read in conjunction with "Profile Diagrams" in this document.
 - 3) Profile types (A), (B) & (C) are contained in "Profile Diagrams" in this document.
 - 4) The Building Envelope of Lot 58 is partially defined by easements. See Plan of Subdivision for dimensions.



Lyssna Group Pty Ltd
 ABN 18 616 811 191
 Tel: +61 3 9516 6899
 PO Box 1098, South Melbourne 3205
 Suite 3, 102 Dodds Street
 Southbank VIC 3006 Australia

LyssnaGroup.com

WANDANA - STAGE 5

DATE: 05/05/20
 DRAWING: AA0074

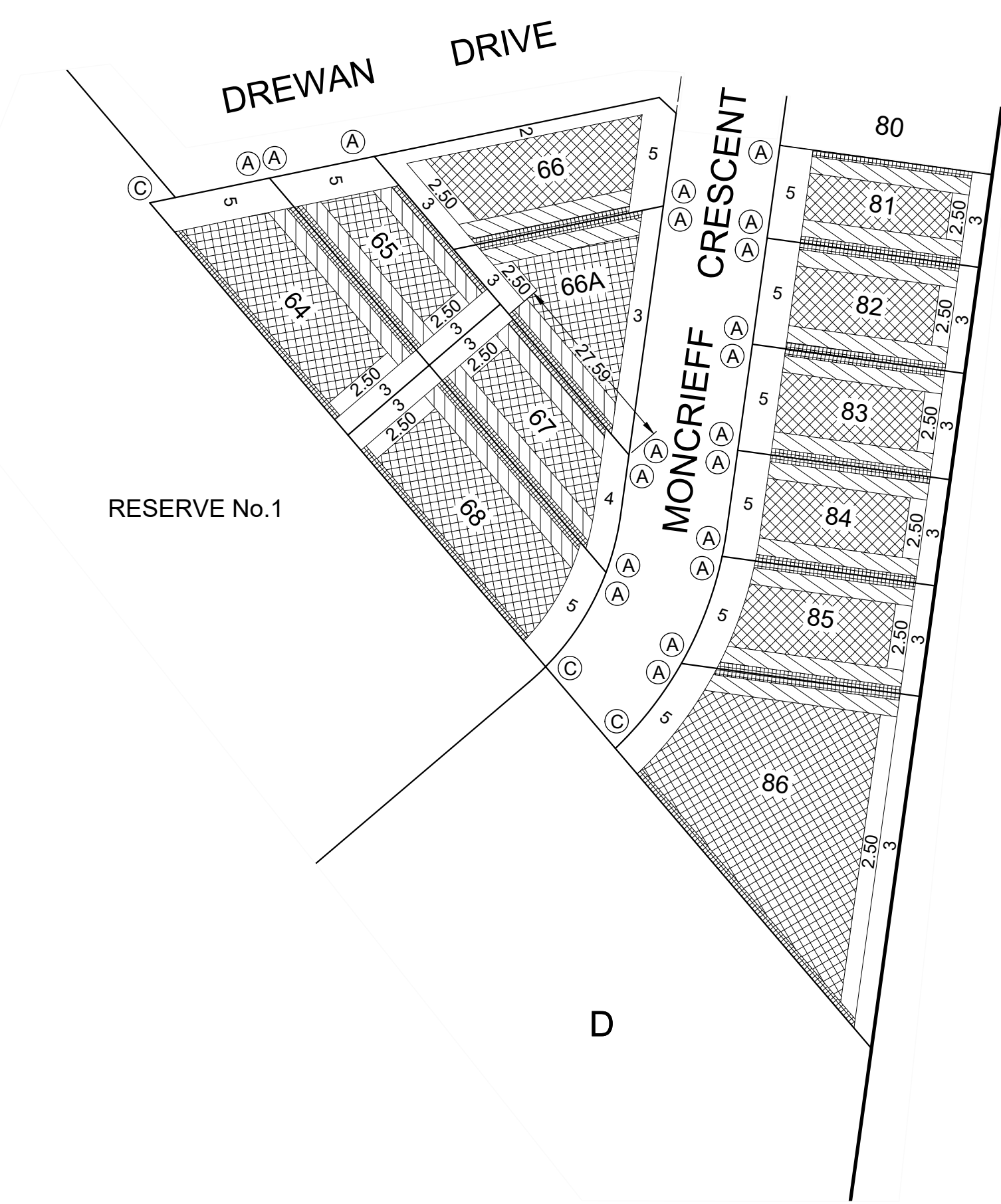
REFERENCE: BE05AF
 DRAWN BY: LS

SCALE 1:750
 0 7.5 15 22.5 30
 LENGTHS ARE IN METRES

SHEET 3 OF 4

VERSION 4

BUILDING ENVELOPE PLAN



Notations:

- 1) The Building Envelopes on this plan are shown enclosed by continuous thick lines.
- 2) This diagram is to be read in conjunction with "Profile Diagrams" in this document.
- 3) Profile types (A), (B) & (C) are contained in "Profile Diagrams" in this document.



Lyssna Group Pty Ltd
 ABN 18 616 811 191
 Tel: +61 3 9516 6899
 PO Box 1098, South Melbourne 3205
 Suite 3, 102 Dodds Street
 Southbank VIC 3006 Australia

LyssnaGroup.com

WANDANA - STAGE 5

DATE: 05/05/20 DRAWING: BE05AF
 REFERENCE: AA0074 DRAWN BY: LS

SCALE 0 7.5 15 22.5 30
 1:750
 LENGTHS ARE IN METRES

VERSION 4

SHEET 4 OF 4