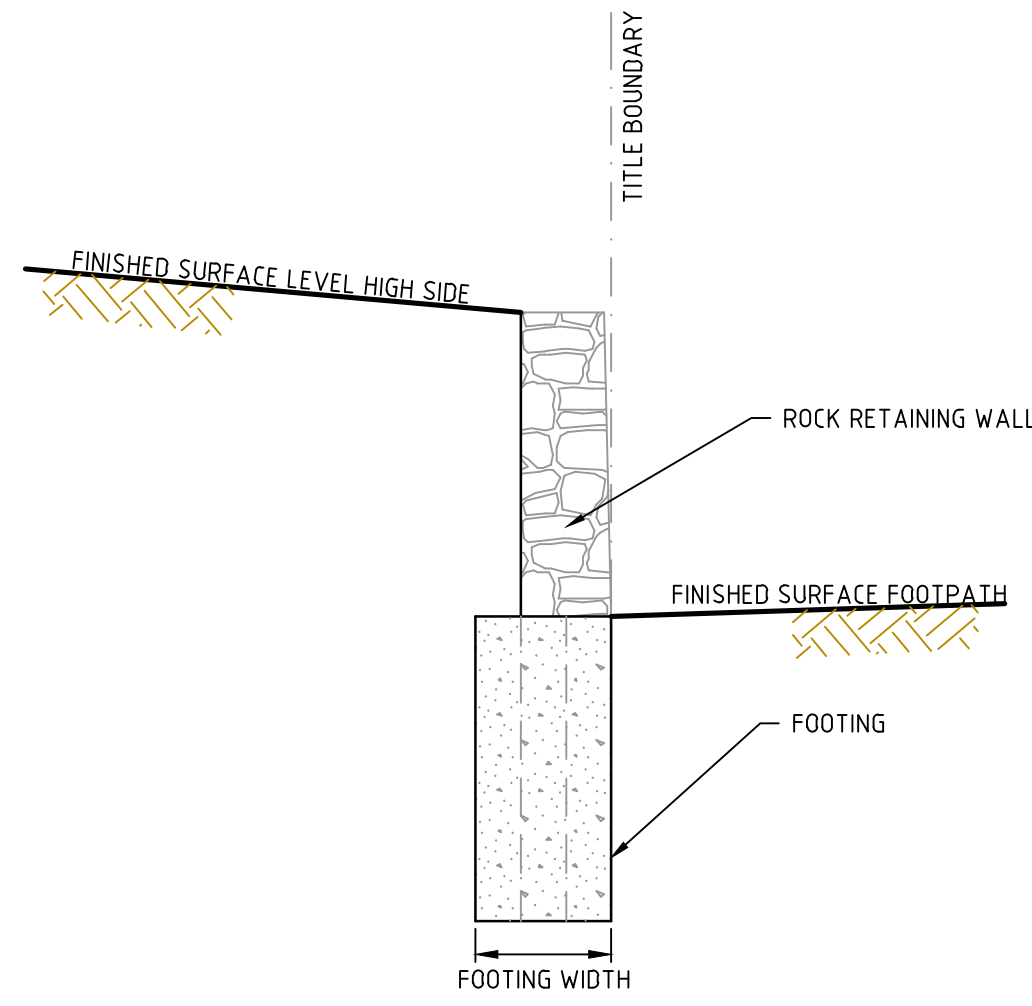


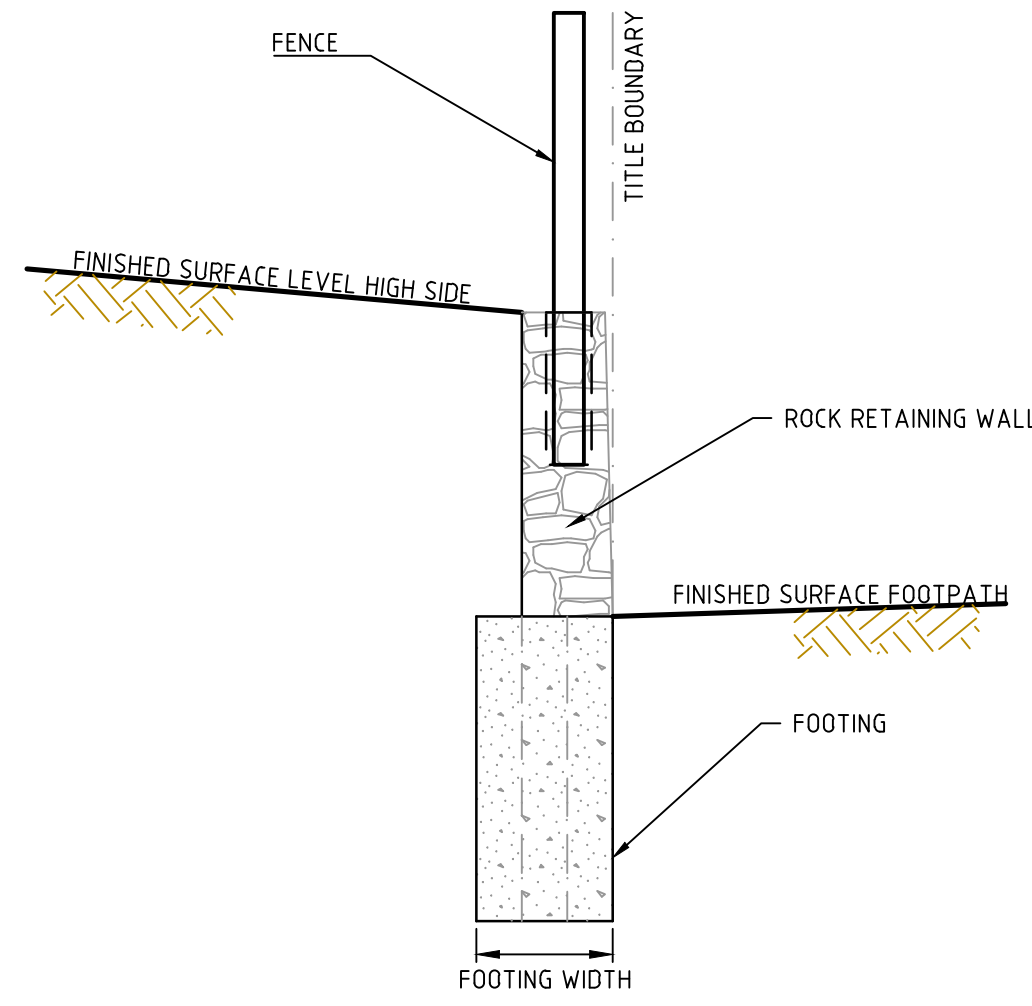
SLEEPER RETAINING WALL TYPICAL DETAIL

NOT TO SCALE



ROCK RETAINING WALL TYPICAL DETAIL

NOT TO SCALE



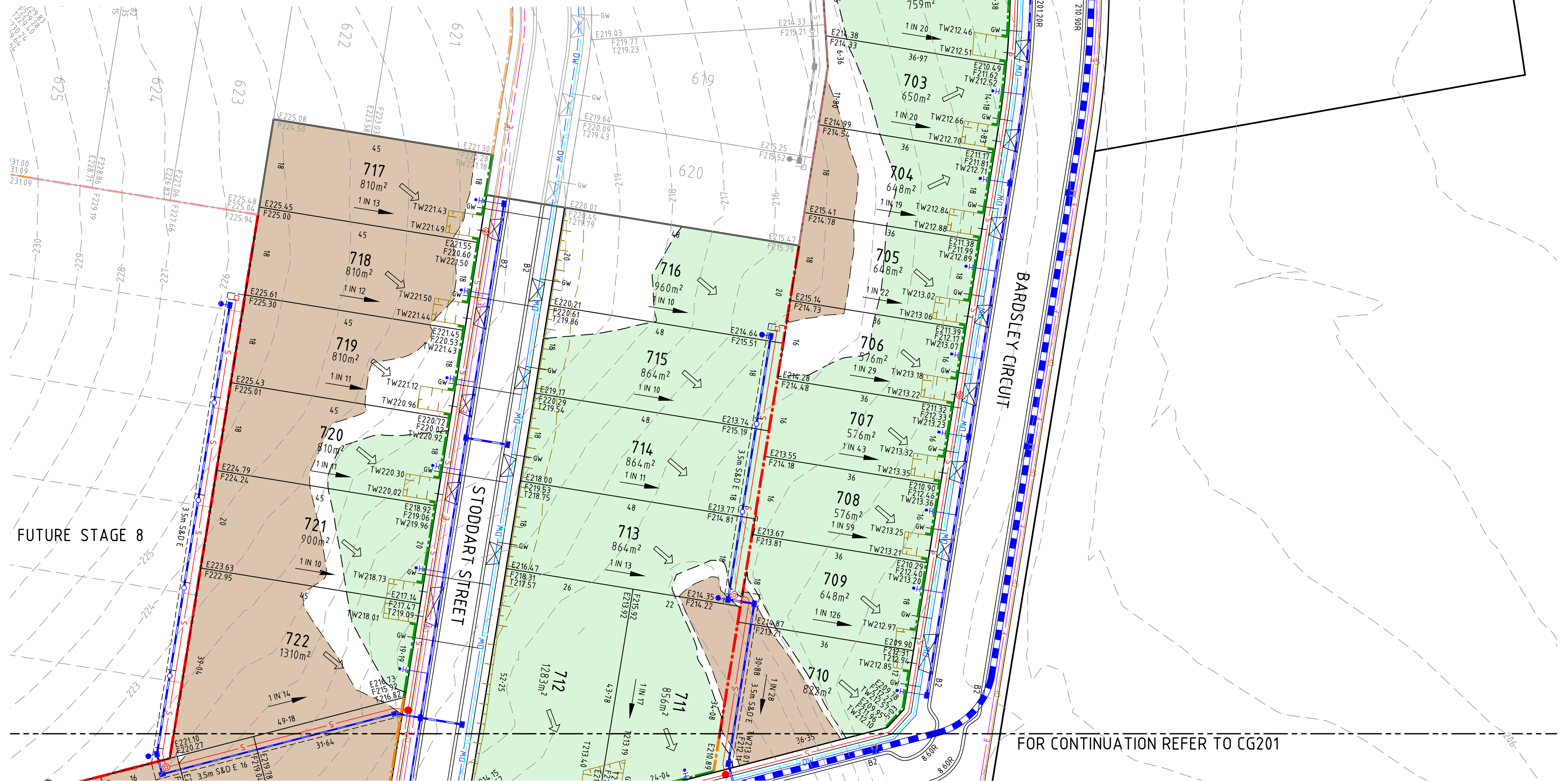
ROCK RETAINING WALL (WITH PROVISION FOR FENCING) TYPICAL DETAIL

NOT TO SCALE

LEGEND

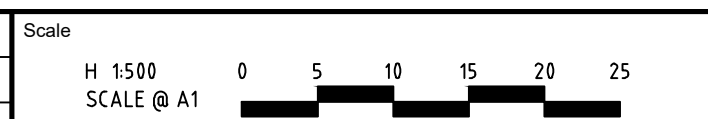
- FILLING ON LOTS GREATER THAN 200mm
- EXCAVATION ON LOTS GREATER THAN 200mm
- TOP OF BATTER
- TOE OF BATTER
- SEWER MAIN AND MAINTENANCE SHAFT
- SEWER RISING MAIN
- GAS
- NON-DRINKING WATER
- DRINKING WATER
- UNDERGROUND ELEC
- UNDERGROUND TELECOM
- STORMWATER DRAIN AND DRAINAGE PIT
- STORMWATER DRAIN LOT CONNECTION
- GAS/WATER LOT CONNECTION
- EXISTING SURFACE FINISHED SURFACE TOP OF BATTER RETAINING WALL LEVEL
- DIRECTION OF FALL
- DRIVEWAY
- SLEEPER RETAINING WALL
- ROCK RETAINING WALL
- ROCK RETAINING WALL WITH FENCE

NOTE:
EARTHWORK DETAIL SHOWN IS BASED ON PRELIMINARY DESIGN ONLY. THE EARTHWORK DETAILS ARE SUBJECT TO CHANGE BASED ON THE FINAL DESIGN AND COUNCIL APPROVAL PROCESS.



file name: 305953C_Sales Plan_1.dwg, layout name: Spire1, plotted by: Lillian Tran, file location: G:\305953\CG200\2022\305953.dwg, plot date: 11/08/2022 3:03 PM, Sheet 1 of 1, Sheets

Rev	Amendments	Approved	Date
B	ISSUED TO CLIENT	M.T-S	12/08/22
A	ISSUED TO CLIENT	M.T-S	01/07/22



L6 414 LA TROBE STREET PO BOX 16084 MELBOURNE
VICTORIA 3007 AUSTRALIA T 61 3 9993 7888
spiire.com.au ABN 55 050 029 635



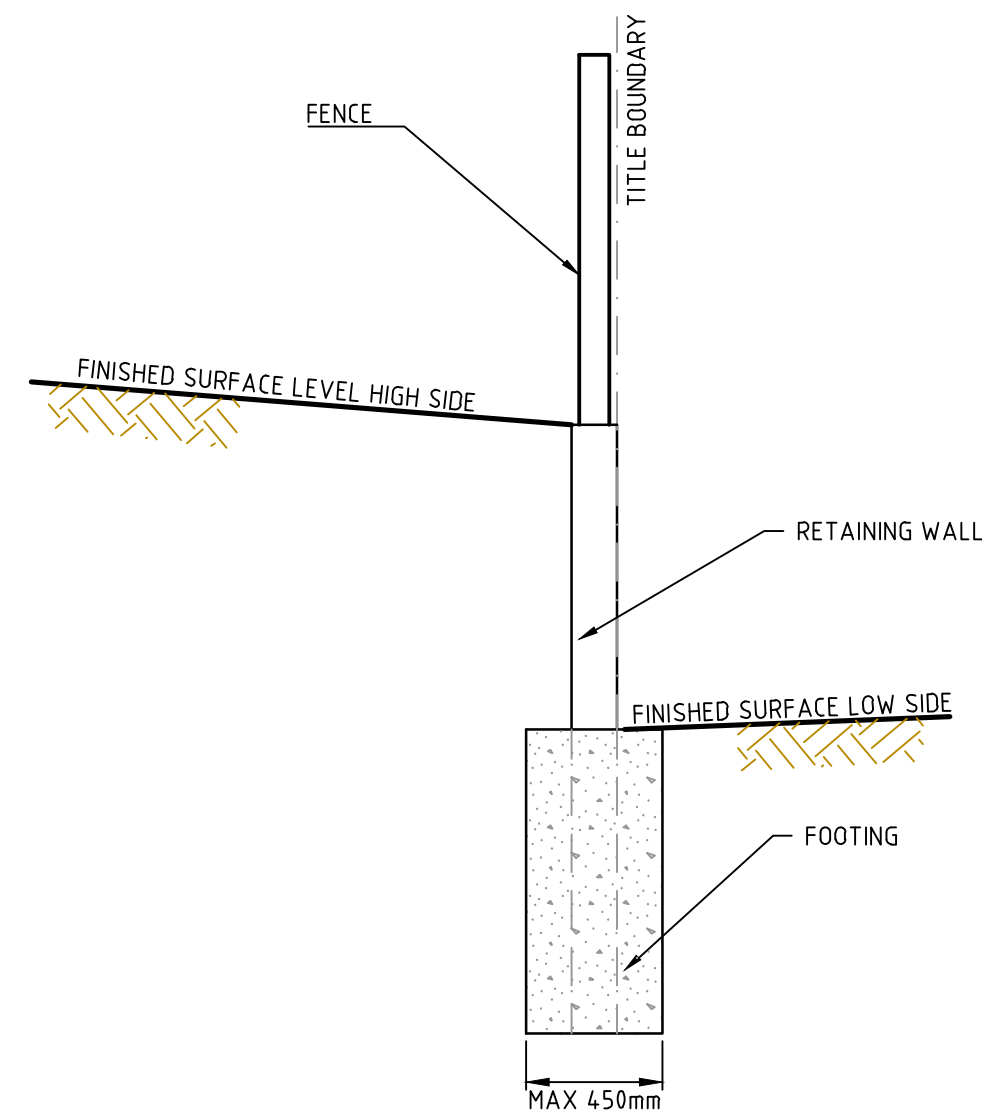
Designed
L. TRAN
Authorised
M. TOOMER-SMITH

Checked
D. SEVERINO
Date
01/07/22

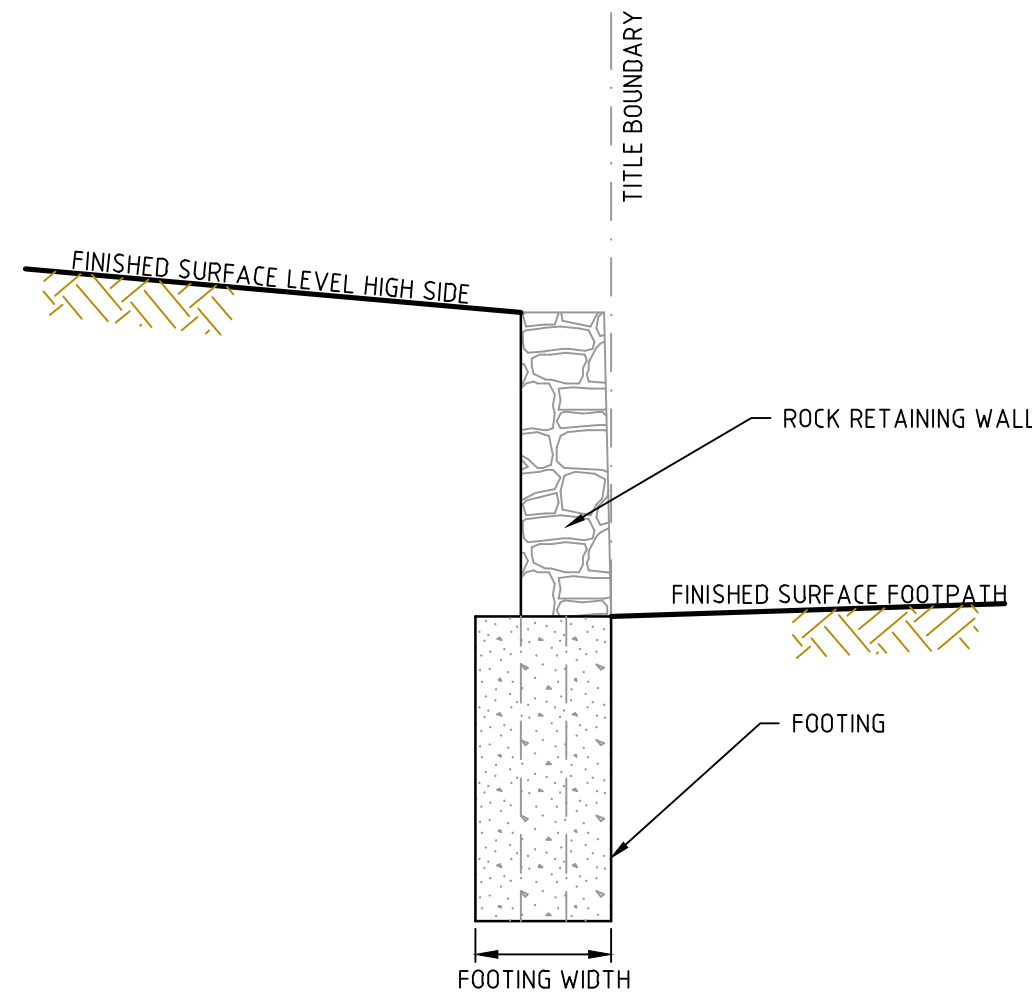
SHERWOOD GRANGE
STAGE 7

SALES PLAN - SHEET 1
HUME CITY COUNCIL
RACECOURSE ROAD HOLDINGS PTY LTD

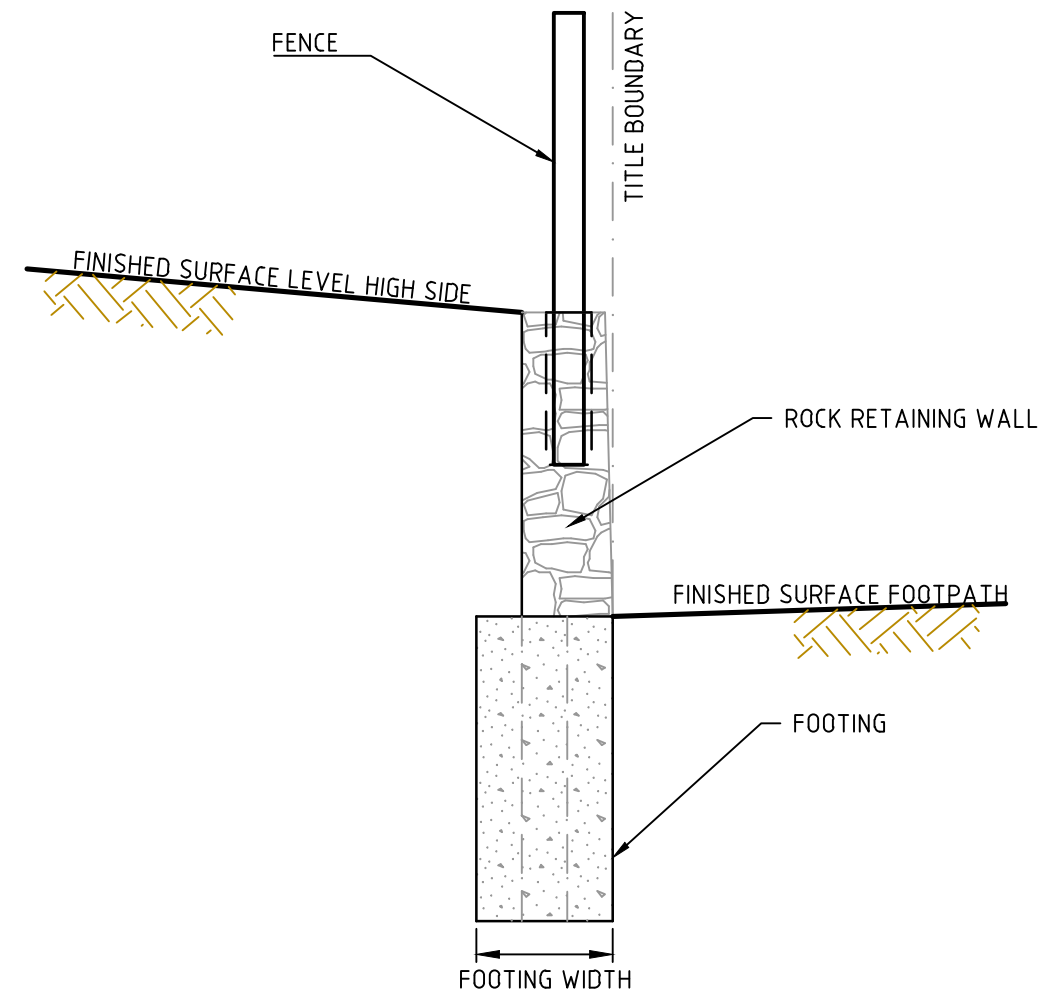
PRELIMINARY Drg No 305953CG200 Rev B



SLEEPER RETAINING WALL TYPICAL DETAIL



ROCK RETAINING WALL TYPICAL DETAIL



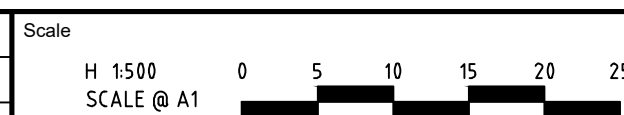
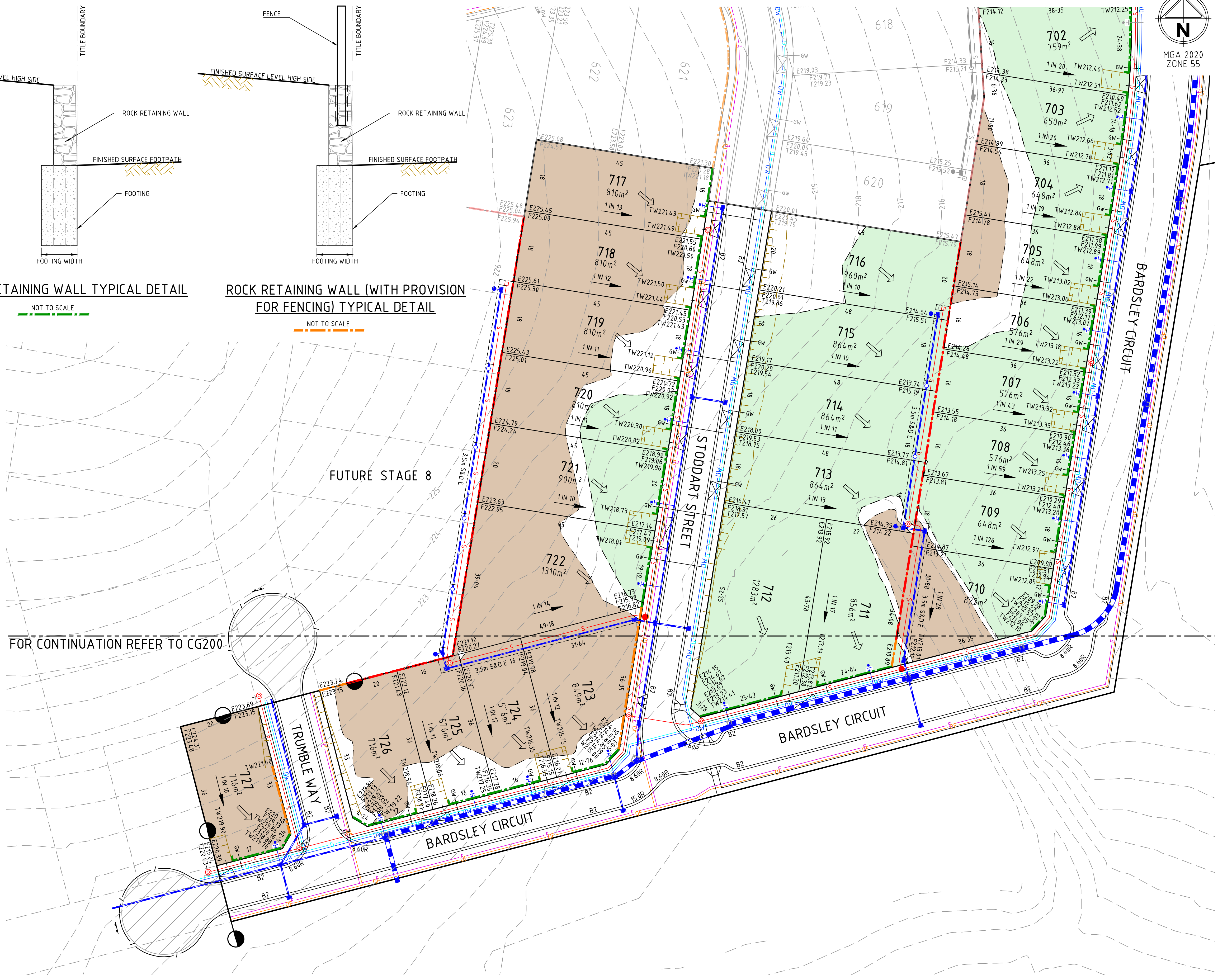
ROCK RETAINING WALL (WITH PROVISION FOR FENCING) TYPICAL DETAIL

LEGEND

- FILLING ON LOTS GREATER THAN 200mm
- EXCAVATION ON LOTS GREATER THAN 200mm
- TOP OF BATTER
- TOE OF BATTER
- SEWER MAIN AND MAINTENANCE SHAFT
- SRM SEWER RISING MAIN
- GAS
- NDW NON-DRINKING WATER
- DW DRINKING WATER
- E UNDERGROUND ELEC
- T UNDERGROUND TELECOM
- STORMWATER DRAIN AND DRAINAGE PIT
- STORMWATER DRAIN LOT CONNECTION
- GW GAS/WATER LOT CONNECTION
- EXISTING SURFACE
- FINISHED SURFACE
- TOP OF BATTER
- RETAINING WALL LEVEL
- DIRECTION OF FALL
- DRIVEWAY
- SLEEPER RETAINING WALL
- ROCK RETAINING WALL
- ROCK RETAINING WALL WITH FENCE

NOTE:
EARTHWORK DETAIL SHOWN IS BASED ON PRELIMINARY DESIGN ONLY. THE EARTHWORK DETAILS ARE SUBJECT TO CHANGE BASED ON THE FINAL DESIGN AND COUNCIL APPROVAL PROCESS.

FOR CONTINUATION REFER TO CG200



© Spiire Australia Pty Ltd All Rights Reserved
This document is produced by Spiire Australia Pty Ltd solely for the benefit of and use by the client in accordance with the terms of the retainer. Spiire Australia Pty Ltd does not and shall not assume any responsibility or liability whatsoever to any third party arising out of any use or reliance by third party on the content of this document.

spiire

L6 414 LA TROBE STREET PO BOX 16084 MELBOURNE
VICTORIA 8007 AUSTRALIA T 61 3 9993 7888
spiire.com.au ABN 55 050 029 635

Sherwood Grange

Designed
L. TRAN
Authorised
M. TOOMER-SMITH

Checked
D. SEVERINO
Date
01/07/22

**SHERWOOD GRANGE
STAGE 7**

SALES PLAN - SHEET 2
HUME CITY COUNCIL
RACECOURSE ROAD HOLDINGS PTY LTD

PRELIMINARY Drg No 305953CG201

B

file name: 305953CG - Sales Plan - 1.dwg layout name: Stage 7 (2) plotted by: Lillian Tran
file location: G:\305953CG\305953.dwg\ACAD plot date: 11/08/2022 3:05 PM Sheet 1 of 1 Sheets