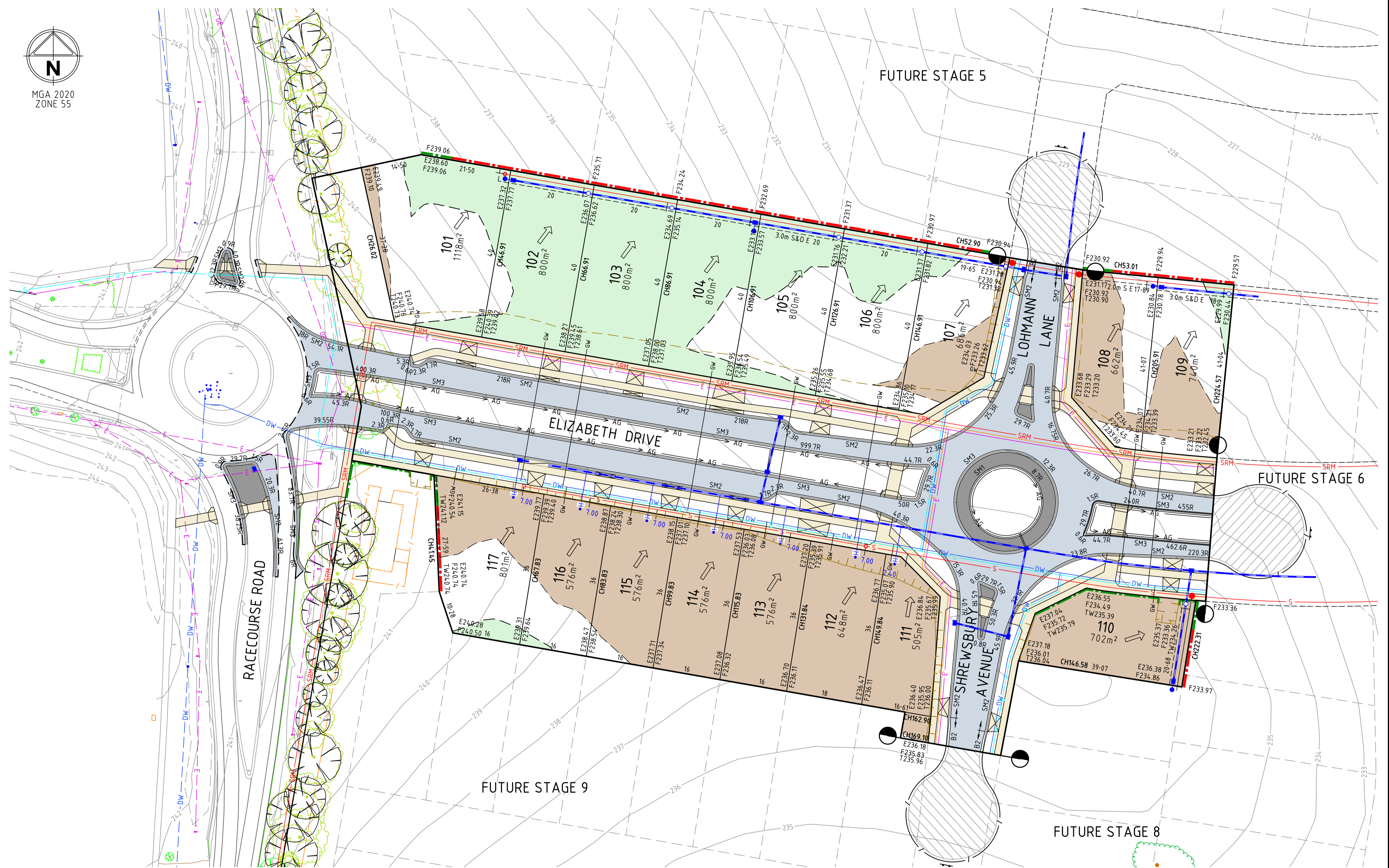


**RETAINING WALL TYPICAL DETAIL**  
NOT TO SCALE



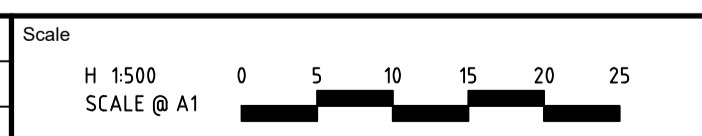
**LEGEND**

- FILLING ON LOTS GREATER THAN 200mm
- EXCAVATION ON LOTS GREATER THAN 200mm
- TOP OF BATTER
- TOE OF BATTER
- SEWER MAIN AND MAINTENANCE SHAFT
- GAS
- NON-DRINKING WATER
- DRINKING WATER
- UNDERGROUND ELEC
- UNDERGROUND TELECOM
- STORMWATER DRAIN AND DRAINAGE PIT
- STORMWATER DRAIN LOT CONNECTION
- GAS/WATER LOT CONNECTION
- EXISTING SURFACE
- FINISHED SURFACE
- TOP OF BATTER
- TOP OF RETAINING WALL
- DIRECTION OF FALL
- DRIVEWAY
- ROCK RETAINING WALL
- SLEEPER RETAINING WALL

**NOTE:**  
EARTHWORK DETAIL SHOWN IS BASED ON PRELIMINARY DESIGN ONLY. THE EARTHWORK DETAILS ARE SUBJECT TO CHANGE BASED ON THE FINAL DESIGN AND COUNCIL APPROVAL PROCESS.

file name: 305950CG000 - Sales Plan.dwg; layout name: Spiire; plotted by: Anthony Scott; file location: \\spiire\media\data\305950CG000\A1.dwg; plot date: 11/06/2020 5:27 PM; Sheet 1 of 1 Sheets

Rev	Amendments	Approved	Date
A	ISSUED TO CLIENT	M.H	11-06-20



© Spiire Australia Pty Ltd All Rights Reserved  
This document is produced by Spiire Australia Pty Ltd solely for the benefit of and use by the client in accordance with the terms of the retainer. Spiire Australia Pty Ltd does not and shall not assume any responsibility or liability whatsoever to any third party arising out of any use or reliance by third party on the content of this document.

414 LA TROBE STREET PO BOX 16084 MELBOURNE  
VICTORIA 8007 AUSTRALIA T 61 3 9993 7888  
spiire.com.au ABN 55 050 029 635

Designed  
**A. SCOTT**

Checked

Authorised  
**M. HOLMES**

Date  
11-06-20

**SHERWOOD GRANGE**  
**STAGE 1**  
**SALES PLAN**

HUME CITY COUNCIL  
RACECOURSE ROAD HOLDING PTY LTD

**PRELIMINARY** Drg No **305950CG000** Rev **A**