

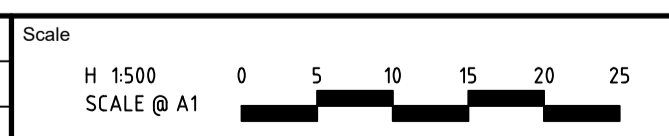
**LEGEND**

- FILLING ON LOTS GREATER THAN 200mm
- EXCAVATION ON LOTS GREATER THAN 200mm
- TOP OF BATTER
- TOE OF BATTER
- SEWER MAIN AND MAINTENANCE SHAFT
- SEWER RISING MAIN
- GAS
- NON-DRINKING WATER
- DRINKING WATER
- UNDERGROUND ELEC
- UNDERGROUND TELECOM
- STORMWATER DRAIN AND DRAINAGE PIT
- STORMWATER DRAIN LOT CONNECTION
- GAS/WATER LOT CONNECTION
- F56.63 EXISTING SURFACE FINISHED SURFACE
- E57.00 TOP OF BATTER
- T57.01 RETAINING WALL LEVEL
- DIRECTION OF FALL
- DRIVEWAY
- ROCK RETAINING WALL
- SLEEPER RETAINING WALL TYPE A
- SLEEPER RETAINING WALL TYPE B

RETAINING WALL TYPICAL DETAIL  
TYPE A  
NOT TO SCALE

RETAINING WALL TYPICAL DETAIL  
TYPE B  
NOT TO SCALE

**NOTE:**  
EARTHWORK DETAIL SHOWN IS BASED ON PRELIMINARY DESIGN ONLY. THE EARTHWORK DETAILS ARE SUBJECT TO CHANGE BASED ON THE FINAL DESIGN AND COUNCIL APPROVAL PROCESS.



Rev	Amendments	Approved	Date
C	RETAINING WALL LOTS 201-203 ADDED & SLEEPER RETAINING WALL AMENDED	M.H	04-06-20
B	RETAINING WALLS AMENDED	M.H	27-05-20
A	ISSUED TO CLIENT	M.H	22-05-20

© Spiire Australia Pty Ltd All Rights Reserved  
This document is produced by Spiire Australia Pty Ltd solely for the benefit of and use by the client in accordance with the terms of the retainer. Spiire Australia Pty Ltd does not and shall not assume any responsibility or liability whatsoever to any third party arising out of any use or reliance by third party on the content of this document.

414 LA TROBE STREET PO BOX 16084 MELBOURNE  
VICTORIA 8007 AUSTRALIA T 61 3 9993 7888  
spiire.com.au ABN 55 050 029 635

Designed  
L. TRAN  
Authorised  
M. HOLMES

Checked  
D. SEVERINO  
Date  
22-05-20

**SHERWOOD GRANGE STAGE 2**

SALES PLAN  
HUME CITY COUNCIL  
RACECOURSE ROAD HOLDINGS PTY LTD

**PRELIMINARY** Drg No **305946CG200** Rev **C**

file name: 305946\_C\_Sales Plan\_1.dwg; layout name: Sales Plan; plotted by: Liana Tran; file location: G:\305946\305946\DWG\CAD; plot date: 04/06/2020 9:40 AM; Sheet 1 of 1 Sheets