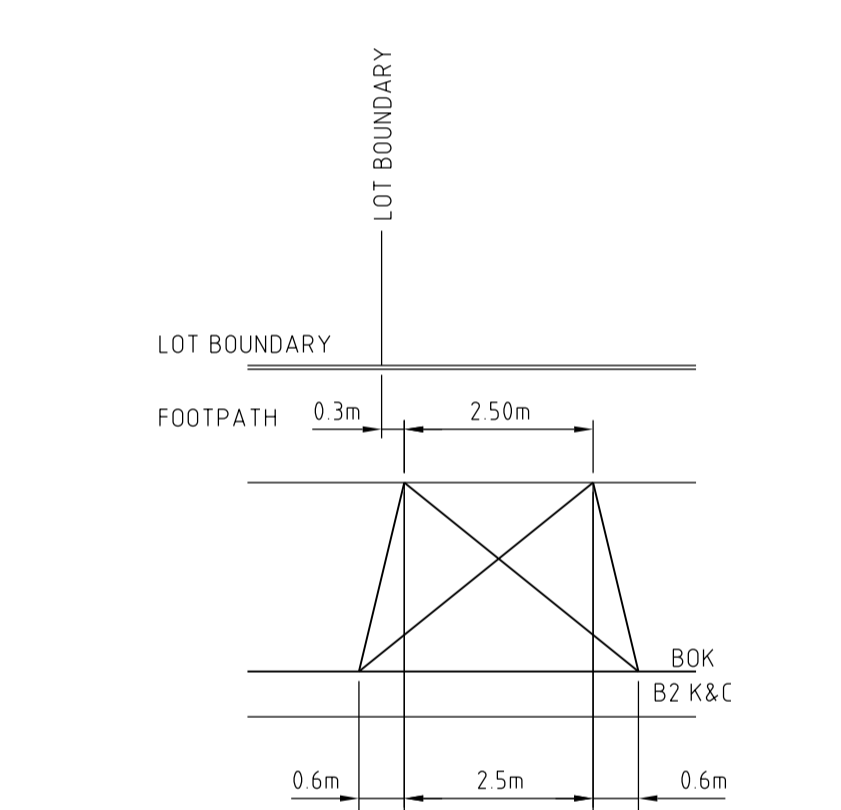


DRIVEWAY DETAIL
LOTS 757 TO 759B
DRIVEWAY DETAILS AS PER EDM 501 WITH EXCEPTION TO DIMENSIONS SHOWN ABOVE



DRIVEWAY DETAIL
LOTS 754 TO 756
DRIVEWAY DETAILS AS PER EDM 501 WITH EXCEPTION TO DIMENSIONS SHOWN ABOVE

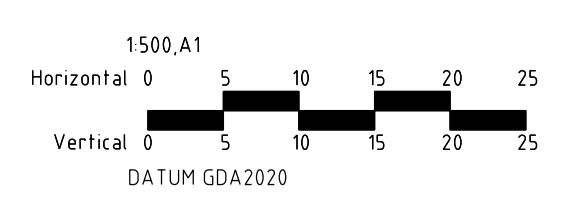
SEWER BACKFILL NOTE:
REFER TO MRWA BACKFILL SPECIFICATION 04-03.1 FOR BACKFILLING AND EMBEDMENT DETAILS FOR SEWERS CONSTRUCTED UNDER ROADS AND FOOTPATHS.

DESCRIPTION	PROPOSED
PSIVE IRRIGATION TREE PIT TYPE 1 (1.5m PIT & 2.0m TRENCH)	
REFER SHEET 33 FOR DETAILS	

SERVICES OFFSETS AND LOCATION TABLE

Location	WATER	ELECTRICITY	TELECOM
	DW	CABLES POLE	
SACRED DRIVE	2.75 N	2.30 S 0.90 BOK	1.80 N
SPECKLE CIRCUIT (LOT 719 T O 720)	2.60 W	2.30 E 0.90 BOK	1.80 E
SPECKLE CIRCUIT (LOT 725 T O 726)	2.60 W	2.30 E 0.90 BOK	1.80 E
FLYCATCHER ROAD	2.60 E	2.30 W 0.90 BOK	1.80 W
KRISTEN ROAD	2.60 S	2.30 N 0.90 BOK	1.80 N
VANGEL ROAD	2.60 S	2.30 N 0.90 BOK	1.80 N
PEDRO STREET	2.60 W	2.30 E 0.90 BOK	1.80 E
ZOOGIE ROAD	2.60 W	2.30 E 0.90 BOK	1.80 E

Rev	Description	Approved	Date
H	COUNCIL COMMENTS ADDED	M.T.S	15/03/22
G	FENCE ADDED END PEDRO ST, CUT-OFF DRAIN DIRECTED TO PIT 62,	M.T.S	28/01/22
F	COUNCIL COMMENTS ADDED	M.T.S	23/11/21
E	EXISTING AND FINISHED LEVELS UPDATED	M.T.S	18/11/21
D	DRIVEWAYS LOTS 727, 738 & 751 RELOCATED TO OPPOSITE SIDE	M.T.S	07/10/21
C	KRISTEN ROAD TEMP TURN AREA REMOVED, HEAVY DUTY DRIVEWAY ADDED	M.T.S	05/10/21
B	DRIVEWAY LOCATIONS UPDATED FOR LOTS 751, 752 & 753	M.T.S	13/09/21
A	FIRST ISSUE TO COUNCIL	M.T.S	05/07/21



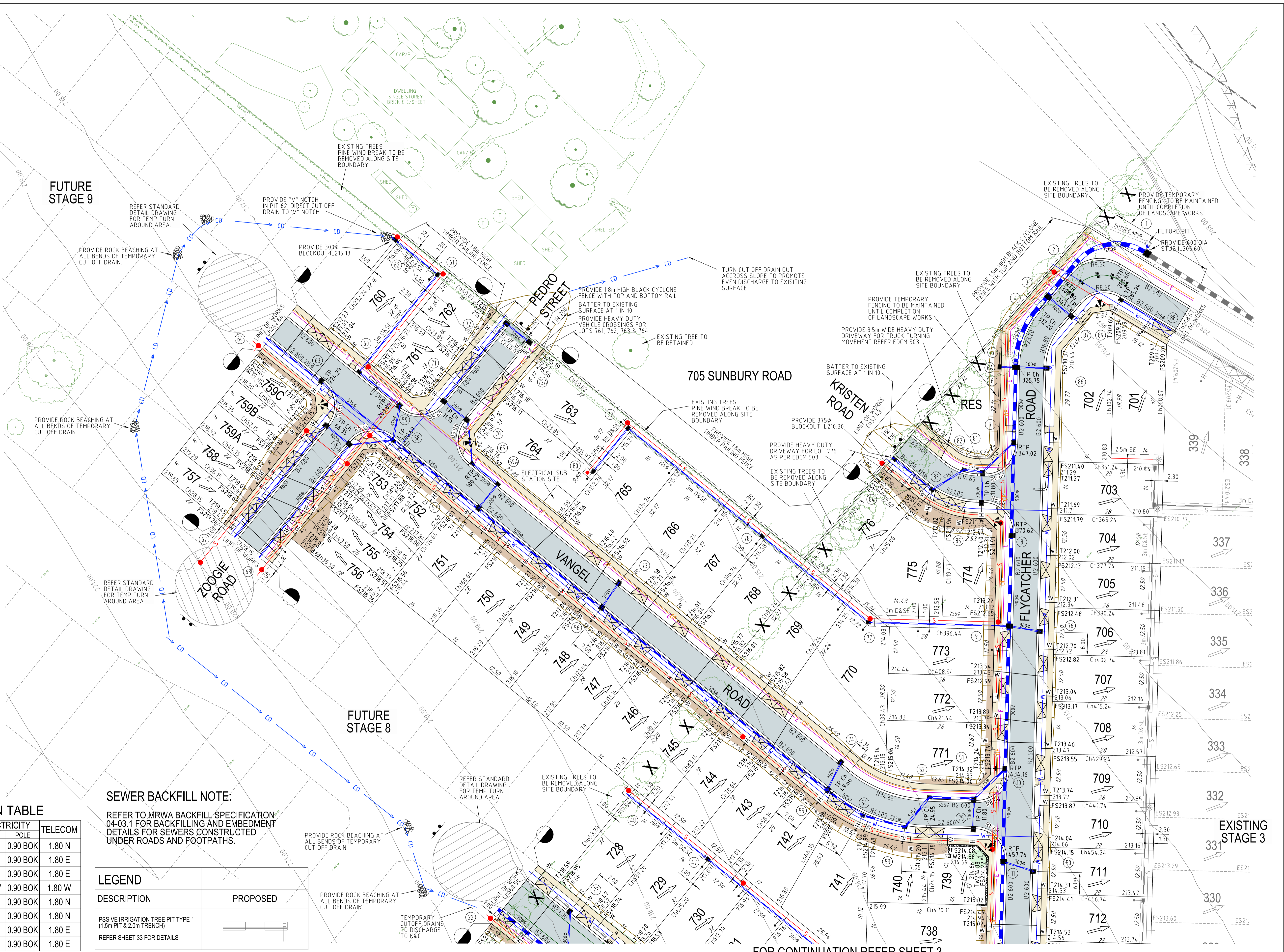
spiire
© Spiire Australia Pty Ltd All Rights Reserved
This document is produced by Spiire Australia Pty Ltd solely for the benefit of and use by the client in accordance with the terms of the retainer. Spiire Australia Pty Ltd does not and shall not assume any responsibility or liability whatsoever to any third party arising out of any use or reliance by third party on the content of this document.

spiire
spiire.com.au
ABN 55 050 029 635

villawood properties
Communities Designed for Living
Designed by R. WEINBER
Authorised by M. TOOMER-SMITH

Redstone.
Your world awaits
Checked by D CAMERON
Date 05/07/21

REDSTONE ESTATE
STAGE 7
ROAD AND DRAINAGE FACE PLAN
SHEET 1 OF 2
VILLAWOOD PROPERTIES
HUME CITY COUNCIL
PRELIMINARY
Drg No 305918R02
Rev H



FOR CONTINUATION REFER SHEET 3

FOR CONTINUATION REFER SHEET 2



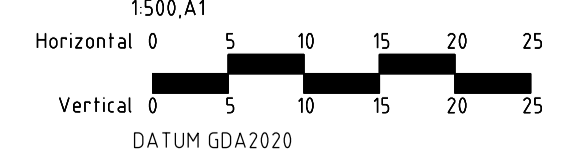
LEGEND	PROPOSED
DESCRIPTION	
PSSIVE IRRIGATION TREE PIT TYPE 1 (1.5m PIT & 2.0m TRENCH)	
REFER SHEET 33 FOR DETAILS	

SEWER BACKFILL NOTE:
 REFER TO MRWA BACKFILL SPECIFICATION 04-03.1 FOR BACKFILLING AND EMBEDMENT DETAILS FOR SEWERS CONSTRUCTED UNDER ROADS AND FOOTPATHS.

SERVICES OFFSETS AND LOCATION TABLE

Location	WATER	ELECTRICITY	TELECOM
	DW	CABLES POLE	
SACRED DRIVE	2.75 N	2.30 S 0.90 BOK	1.80 N
SPECKLE CIRCUIT (LOT 719 T O 720)	2.60 W	2.30 E 0.90 BOK	1.80 E
SPECKLE CIRCUIT (LOT 725 T O 726)	2.60 W	2.30 E 0.90 BOK	1.80 E
FLYCATCHER ROAD	2.60 E	2.30 W 0.90 BOK	1.80 W
KRISTEN ROAD	2.60 S	2.30 N 0.90 BOK	1.80 N
VANGEL ROAD	2.60 S	2.30 N 0.90 BOK	1.80 N
PEDRO STREET	2.60 W	2.30 E 0.90 BOK	1.80 E
ZOOGIE ROAD	2.60 W	2.30 E 0.90 BOK	1.80 E

F	COUNCIL COMMENTS ADDED	M.T.S	15/03/22
E	COUNCIL COMMENTS ADDED	M.T.S	28/01/22
D	COUNCIL COMMENTS ADDED	M.T.S	23/11/21
C	EXISTING AND FINISHED LEVELS UPDATED	M.T.S	18/11/21
B	DRIVEWAYS LOTS 727, 738 & 751 RELOCATED TO OPPOSITE SIDE	M.T.S	07/10/21
A	FIRST ISSUE TO COUNCIL	M.T.S	05/07/21
Rev	Amendments	Approved	Date



© Spiire Australia Pty Ltd All Rights Reserved
 This document is produced by Spiire Australia Pty Ltd solely for the benefit of end use by the client in accordance with the terms of the retainer. Spiire Australia Pty Ltd does not and shall not assume any responsibility or liability whatsoever to any third party arising out of any use or reliance by third party on the content of this document.

spiire.com.au ABN 55 050 029 635

Communities Designed for Living

Designed by
R. WEINBER
 Authorised
M. TOOMER-SMITH

Your world awaits

Checked
D CAMERON
 Date
05/07/21

REDSTONE ESTATE
STAGE 7
ROAD AND DRAINAGE FACE PLAN
SHEET 2 OF 2
 VILLAWOOD PROPERTIES
 HUME CITY COUNCIL

PRELIMINARY Drg No **305918R03** Rev **F**