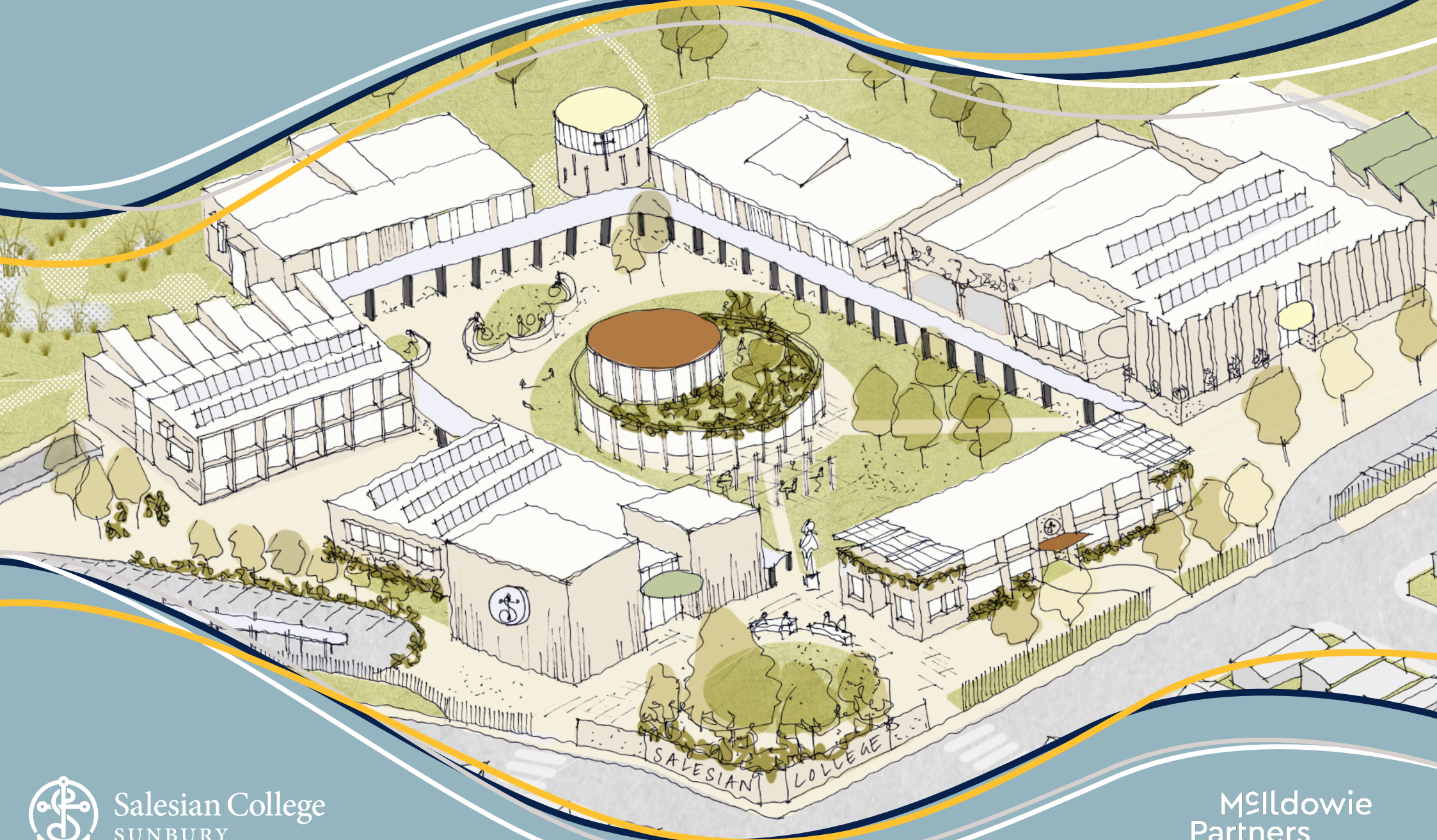


TOWARDS 2040

NEW CAMPUS MASTERPLAN



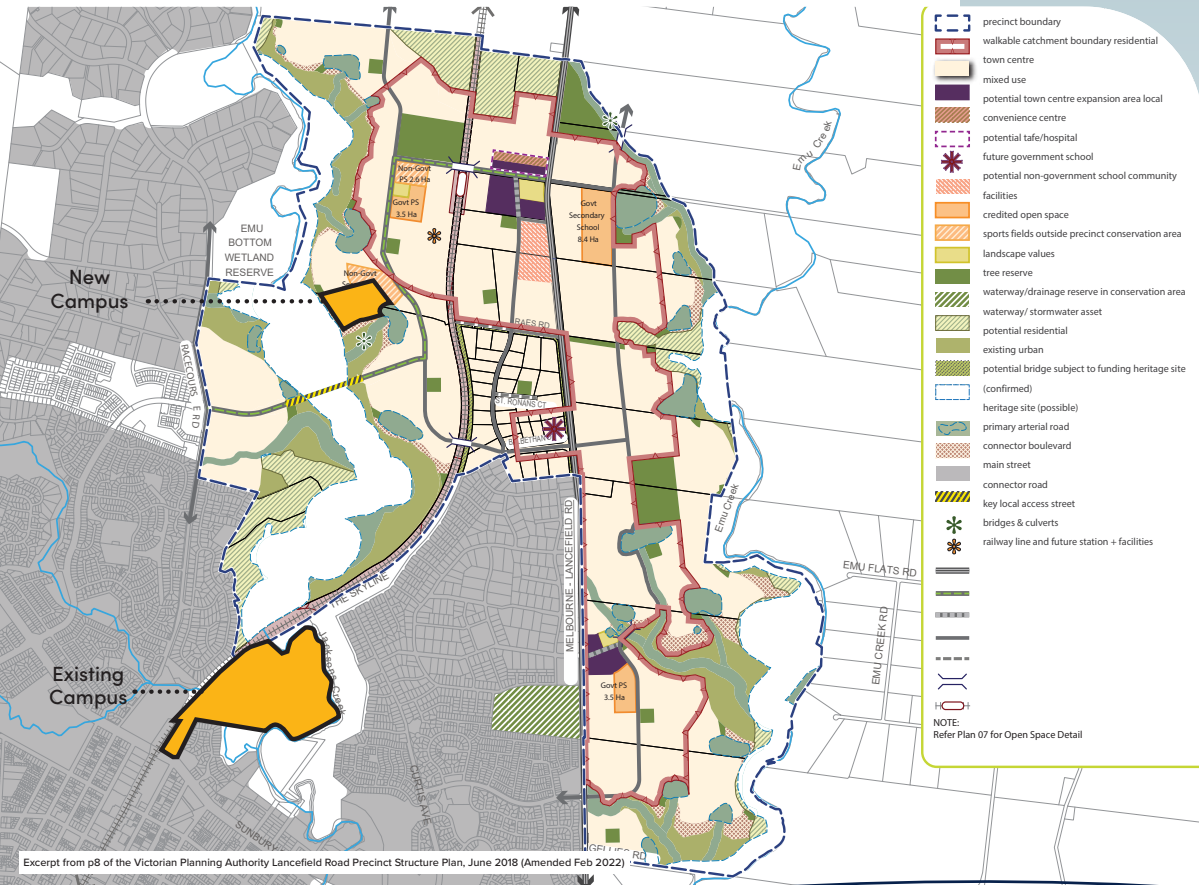
Salesian College
SUNBURY

Mildowie
Partners

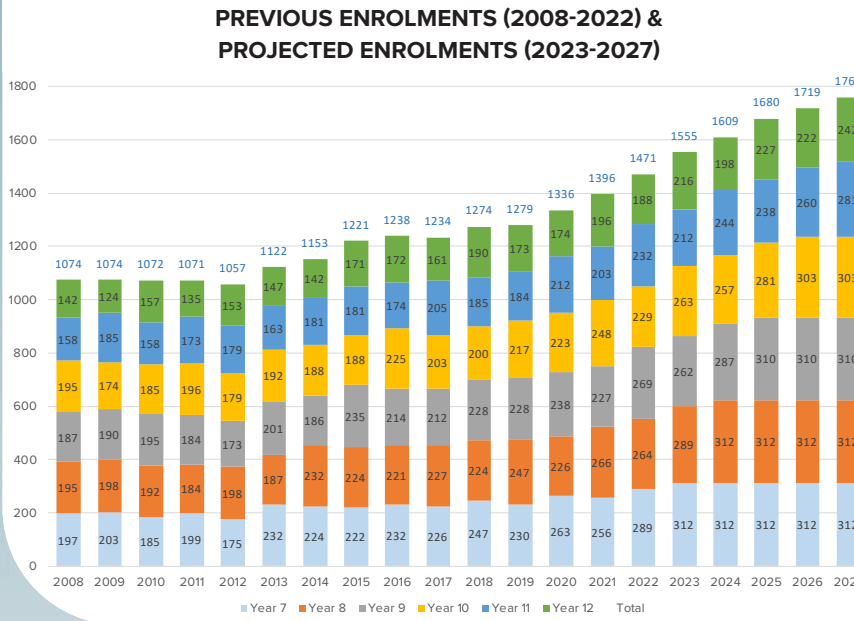
The development of the **Salesian College Sunbury Masterplan - Towards 2040** - provides an overarching vision for the future of the College. Its purpose is to be relevant for today and responsive for tomorrow. The most significant feature of the College Masterplan is the development and planning for the second campus, which is designed to accommodate increased growth in local population and enrolment trajectory.

OUR VALUES AND SALESIAN CHARTER

Our College values of Community, Learning, Excellence, and Faith have been fundamental to each stage of the Masterplan development. Consultation with staff, students, and our local community has provided valuable feedback and input into the design of the new campus - for both form and function. As a Salesian school, it is crucial that our new campus allows us to continue to model those values set by our Salesian Charter; to be a home that welcomes, a parish that evangelises, a school that prepares for life, and a playground where students and staff meet and enjoy themselves.



CRAFTING A NEW STORY



ALL LEARNING RADIATES FROM THE CAMPUS HEART

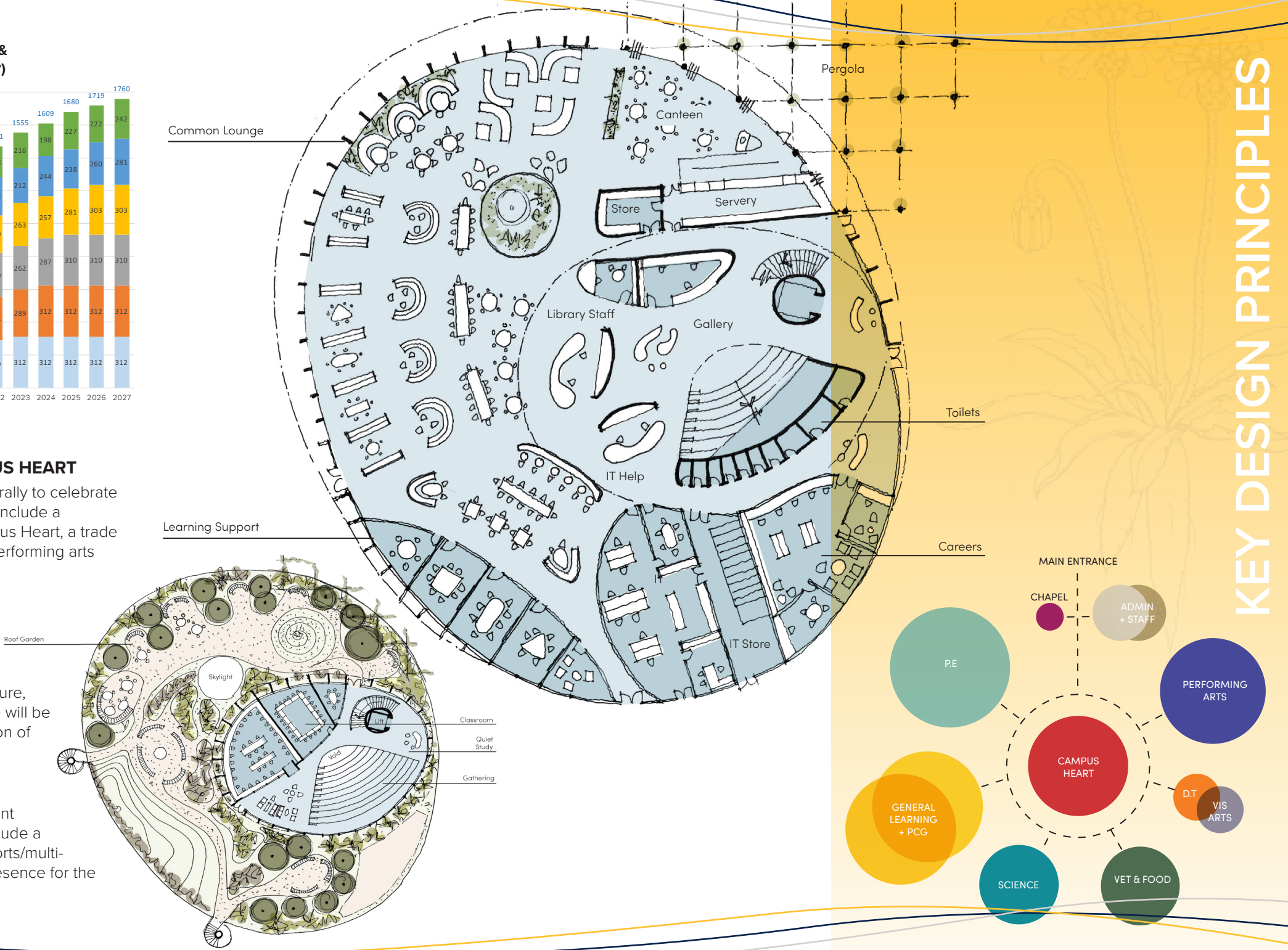
Each part of the new campus is expressed architecturally to celebrate function. Some of the key buildings and facilities will include a Chapel, a shared meeting space known as the Campus Heart, a trade centre, multi-purpose hall, art and science wings, a performing arts centre, and creative outdoor learning spaces.

OUR UNIQUE GROUNDS

Our new campus will leverage the expansive natural farm and parklands on which we are based, with purpose-built outdoor learning spaces and increased opportunities for our students' agriculture, outdoor education, and environmental studies. There will be opportunities for learning, story-telling, and recognition of the rich Aboriginal history of the land in the area.

OUR COMMUNITY SPIRIT

The new campus will support our ongoing commitment to community engagement and connection. It will include a number of public facilities including a theatre and sports/multi-purpose hall and is oriented to have a welcoming presence for the surrounding town and residents.



KEY DESIGN PRINCIPLES

THE WIDER COMMUNITY

Street appeal; public access; community facilities; traffic and pedestrian control.

CONNECTING WITH HISTORY

Arrival sequence; formal campus features; open space; charisma of the mansion and grounds.

AT ONE IN THE ENVIRONMENT

View of landscape; neighbourhood frontage; slope and plateau; connections to local infrastructure; understanding and respect for the indigenous history.

SUSTAINABILITY

Integrated, passive environmental design; consideration for future growth and densification of campus.

STUDENT WELLNESS & CARE

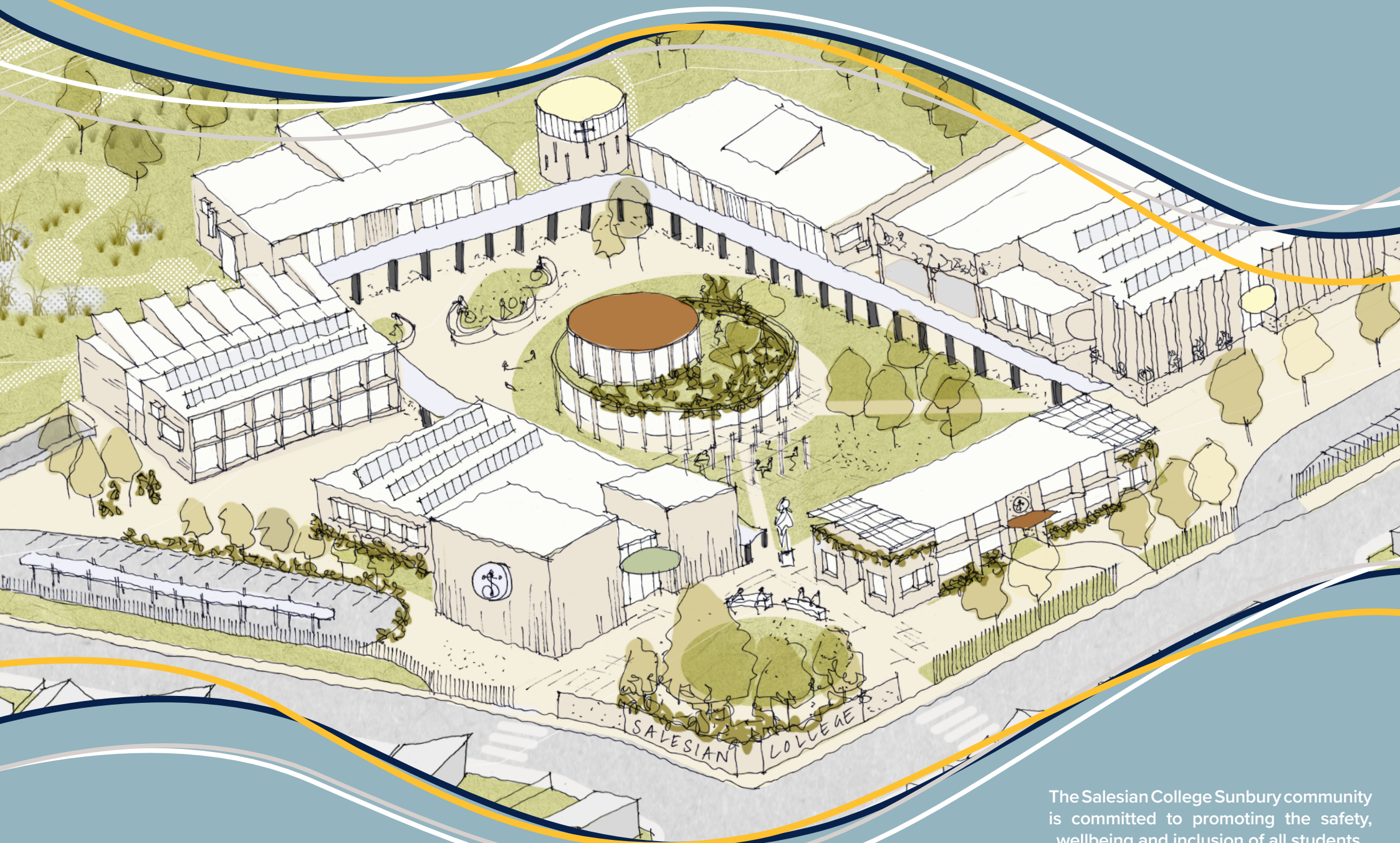
Quiet and private spaces; inclusive and safe environment.

CAMPUS LIFE & COMMUNITY

Areas for congregation, collaboration, and informal social encounters; diverse learning pathways; specialised and multi-purpose facilities.

Excerpt from p8 of the Victorian Planning Authority Lancefield Road Precinct Structure Plan, June 2018 (Amended Feb 2022)

Salesian College Sunbury acknowledge the Wurundjeri Woi Wurrung people as the original inhabitants and custodians of the land on which we learn, work, and play. We pay our respects to their elders, past and present, and are proud to prioritise the development of spaces for storytelling and acknowledgement of the land.



The Salesian College Sunbury community is committed to promoting the safety, wellbeing and inclusion of all students.