

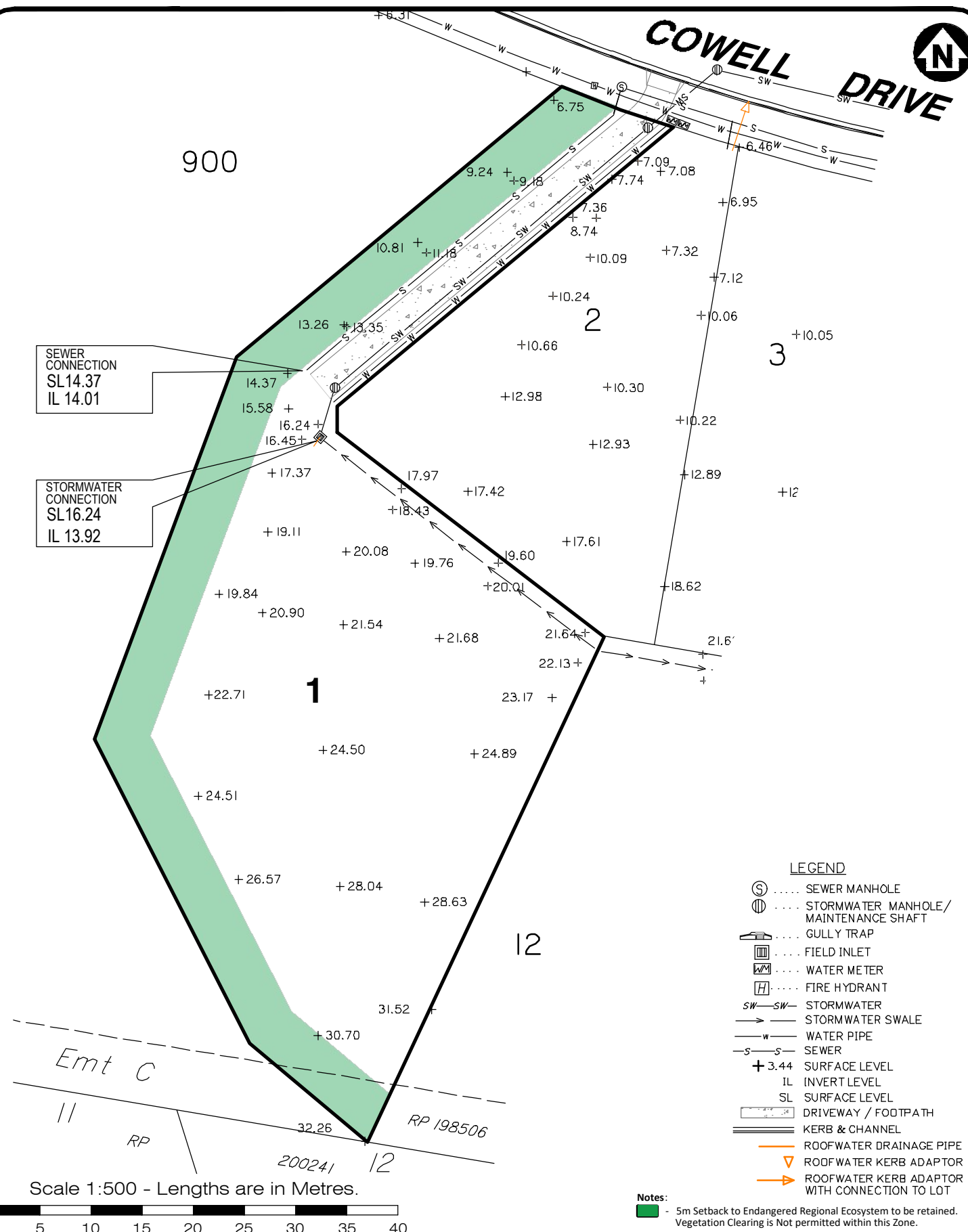
# COWELL DRIVE



900

SEWER CONNECTION  
SL 14.37  
IL 14.01

STORMWATER CONNECTION  
SL 16.24  
IL 13.92

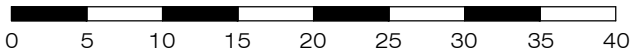


### LEGEND

- ⊙ ..... SEWER MANHOLE
- ⊕ ..... STORMWATER MANHOLE/ MAINTENANCE SHAFT
- ⌒ ..... GULLY TRAP
- ⊞ ..... FIELD INLET
- ⊞ ..... WATER METER
- ⊞ ..... FIRE HYDRANT
- SW-SW ..... STORMWATER
- ..... STORMWATER SWALE
- w- ..... WATER PIPE
- s- ..... SEWER
- + 3.44 ..... SURFACE LEVEL
- IL ..... INVERT LEVEL
- SL ..... SURFACE LEVEL
- ▨ ..... DRIVEWAY / FOOTPATH
- ▬ ..... KERB & CHANNEL
- ..... ROOFWATER DRAINAGE PIPE
- ▽ ..... ROOF WATER KERB ADAPTOR
- ..... ROOFWATER KERB ADAPTOR WITH CONNECTION TO LOT

**Notes:**  
 - 5m Setback to Endangered Regional Ecosystem to be retained. Vegetation Clearing is Not permitted within this Zone.

Scale 1:500 - Lengths are in Metres.



**gassman development perspectives**  
 est 1985  
 planning | environment | landscape | engineering | survey  
 T: 3807 3333 | F: 3287 5461 | www.gassman.com.au  
 Gold Coast & Logan | 76 Business Street, Yatala QLD | PO Box 392, Beenleigh 4207

**Client**  
 Burleigh Heads Estate Pty Ltd

**Project**  
 SERVICE LOCATION SKETCH PLAN

**LOT 1** on SP316142

**Stage 1B, The Arbour Burleigh**  
**Cowell Drive, Burleigh Heads**

**Issue Date** 21/03/2023  
**Meridian** SP316142  
**Local Govt** GOLD COAST CITY COUNCIL  
**Level Datum** AHD  
**Scale (on A4 original)** 1:500  
**Drawn** S. Holt  
**Date Drafted** 14/03/2023  
**Checked** T. Geraghty

**Real Property Description:**  
 Lot 1 on SP316142

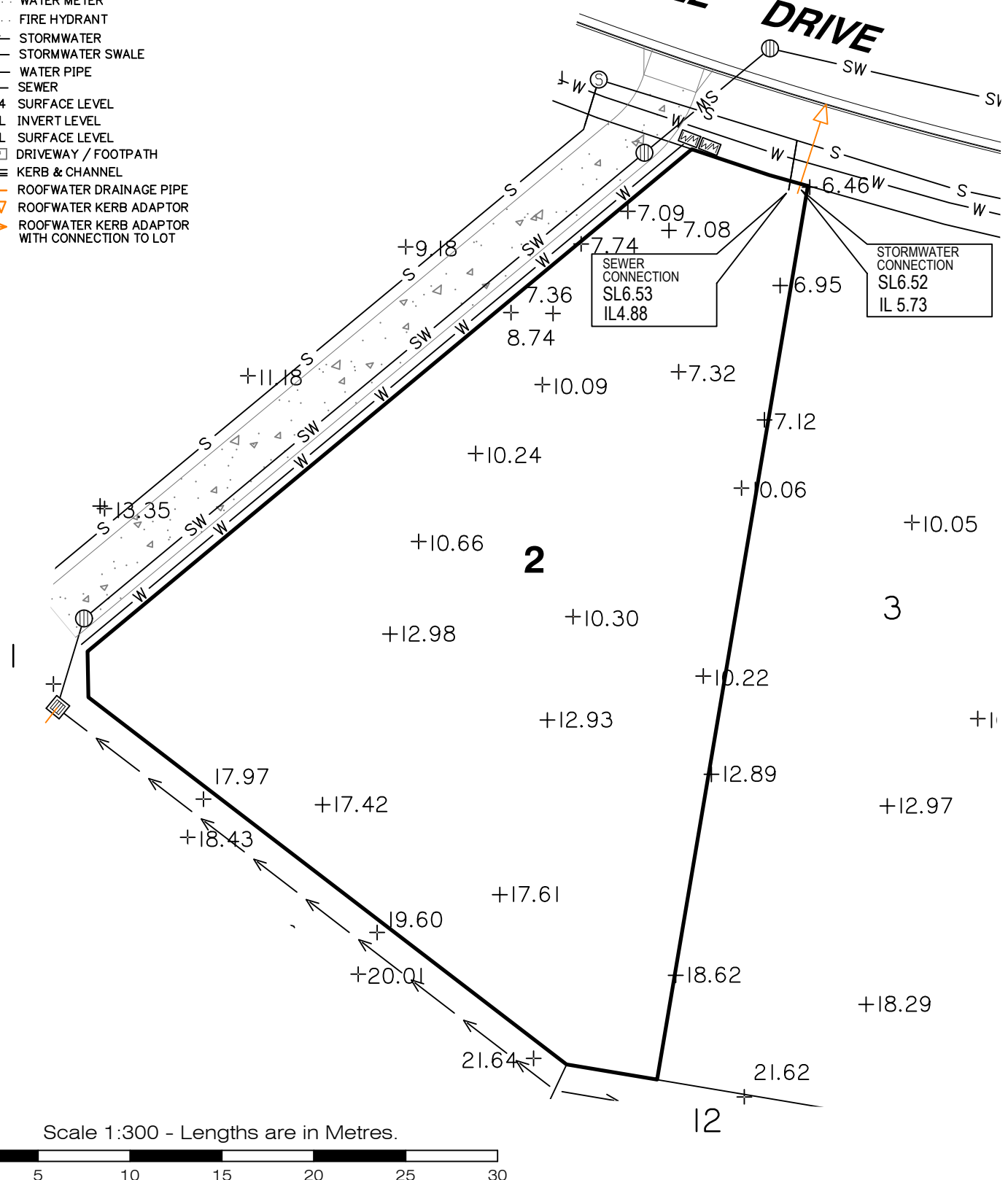
**REFERENCE No.** 5967-1B  
**PLAN No.** 5967 S SK LOT 1



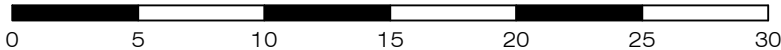
**LEGEND**

- ⊙ ..... SEWER MANHOLE
- ⊕ ..... STORMWATER MANHOLE/ MAINTENANCE SHAFT
- ⌒ ..... GULLY TRAP
- ▭ ..... FIELD INLET
- ⊗ ..... WATER METER
- ⊠ ..... FIRE HYDRANT
- SW-SW ..... STORMWATER
- ..... STORMWATER SWALE
- w— ..... WATER PIPE
- s— ..... SEWER
- + 3.44 ..... SURFACE LEVEL
- IL ..... INVERT LEVEL
- SL ..... SURFACE LEVEL
- ▭ ..... DRIVEWAY / FOOTPATH
- ▬ ..... KERB & CHANNEL
- o— ..... ROOFWATER DRAINAGE PIPE
- ▽ ..... ROOFWATER KERB ADAPTOR
- ..... ROOFWATER KERB ADAPTOR WITH CONNECTION TO LOT

# COWELL DRIVE



Scale 1:300 - Lengths are in Metres.



**gassman development perspectives**  
 est 1985  
 planning | environment | landscape | engineering | survey  
 T: 3807 3333 | F: 3287 5461 | www.gassman.com.au  
 Gold Coast & Logan | 76 Business Street, Yatala QLD | PO Box 392, Beenleigh 4207

**Client**  
Burleigh Heads Estate Pty Ltd

**Project** **SERVICE LOCATION SKETCH PLAN**

**LOT 2** on SP316142

**Stage 1B, The Arbour Burleigh**  
**Cowell Drive, Burleigh Heads**

**Locality** BURLEIGH HEADS

**Local Govt** GOLD COAST CITY COUNCIL

**Scale (on A4 original)**  
**1:300**

**Issue Date** 21/03/2023

**Meridian** SP316142

**Level Datum** AHD

**Drawn** S. Holt

**Date Drafted** 14/03/2023

**Checked** T. Geraghty

**Real Property Description:**  
Lot 2 on SP316142

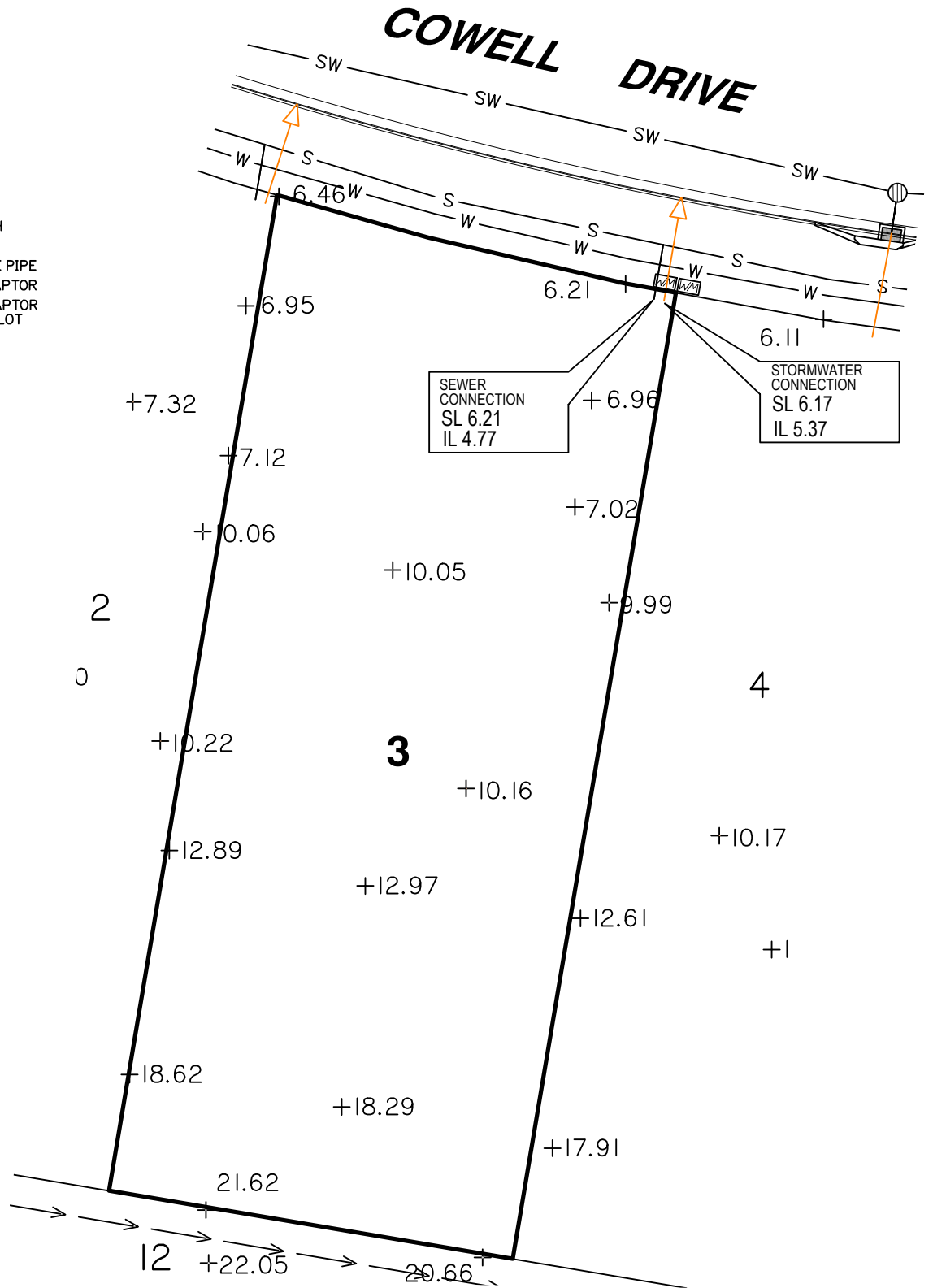
**REFERENCE No.** **5967-1B**

**PLAN No.** **5967 S SK LOT 2**

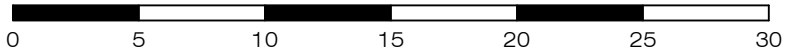


**LEGEND**

- SEWER MANHOLE
- STORMWATER MANHOLE/ MAINTENANCE SHAFT
- GULLY TRAP
- FIELD INLET
- WATER METER
- FIRE HYDRANT
- STORMWATER
- STORMWATER SWALE
- WATER PIPE
- SEWER
- + 3.44 SURFACE LEVEL
- IL INVERT LEVEL
- SL SURFACE LEVEL
- DRIVEWAY / FOOTPATH
- KERB & CHANNEL
- ROOFWATER DRAINAGE PIPE
- ROOFWATER KERB ADAPTOR
- ROOFWATER KERB ADAPTOR WITH CONNECTION TO LOT



Scale 1:300 - Lengths are in Metres.



planning | environment | landscape | engineering | survey  
 T: 3807 3333 | F: 3287 5461 | www.gassman.com.au  
 Gold Coast & Logan | 176 Business Street, Yatala QLD | PO Box 392, Beenleigh 4207

**Client**  
Burleigh Heads Estate Pty Ltd

**Project**  
**SERVICE LOCATION SKETCH PLAN**

**LOT 3** on SP316142

**Stage 1B, The Arbour Burleigh**  
**Cowell Drive, Burleigh Heads**

Locality	BURLEIGH HEADS	Issue Date	21/03/2023
Local Govt	GOLD COAST CITY COUNCIL	Meridian	SP316142
Scale (on A4 original)	1:300	Level Datum	AHD
		Drawn	S. Holt
		Date Drafted	14/03/2023
		Checked	T. Geraghty

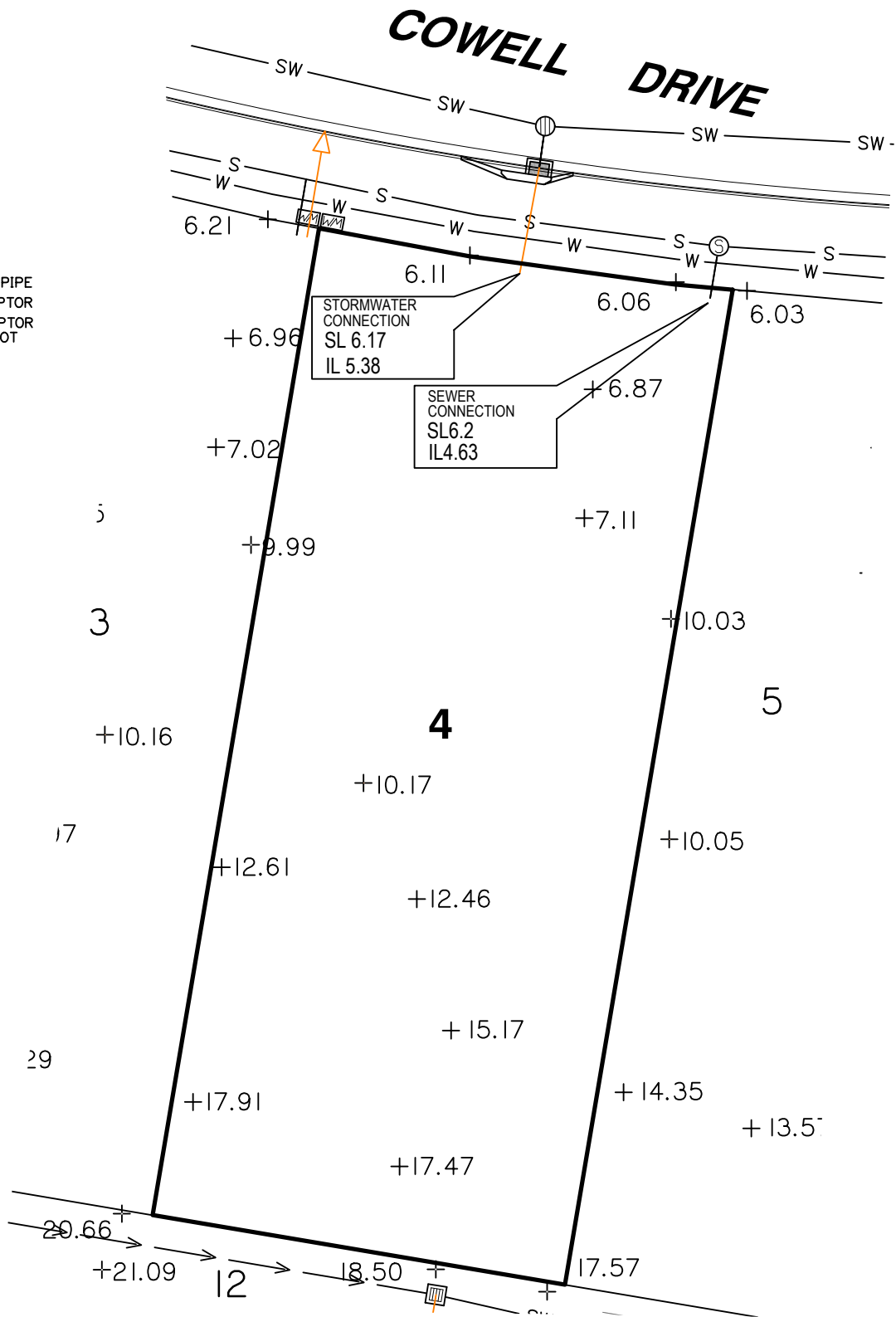
**Real Property Description:**  
Lot 3 on SP316142

**REFERENCE No.** 5967-1B  
**PLAN No.** 5967 S SK LOT 3

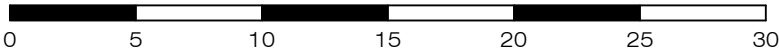


**LEGEND**

- SEWER MANHOLE
- STORMWATER MANHOLE/ MAINTENANCE SHAFT
- GULLY TRAP
- FIELD INLET
- WATER METER
- FIRE HYDRANT
- STORMWATER
- STORMWATER SWALE
- WATER PIPE
- SEWER
- + 3.44 SURFACE LEVEL
- IL INVERT LEVEL
- SL SURFACE LEVEL
- DRIVEWAY / FOOTPATH
- KERB & CHANNEL
- ROOFWATER DRAINAGE PIPE
- ROOFWATER KERB ADAPTOR
- ROOFWATER KERB ADAPTOR WITH CONNECTION TO LOT



Scale 1:300 - Lengths are in Metres.



**gassman**  
**development**  
**perspectives**

est 1985

planning | environment | landscape | engineering | survey

T: 3807 3333 | F: 3287 5461 | www.gassman.com.au

Gold Coast & Logan | 176 Business Street, Yatala QLD | PO Box 392, Beenleigh 4207

Client	<b>Burleigh Heads Estate Pty Ltd</b>
Project	<b>SERVICE LOCATION SKETCH PLAN</b>
	<b>LOT 4</b> on SP316142
	<b>Stage 1B, The Arbour Burleigh</b> <b>Cowell Drive, Burleigh Heads</b>
Real Property Description:	Lot 4 on SP316142

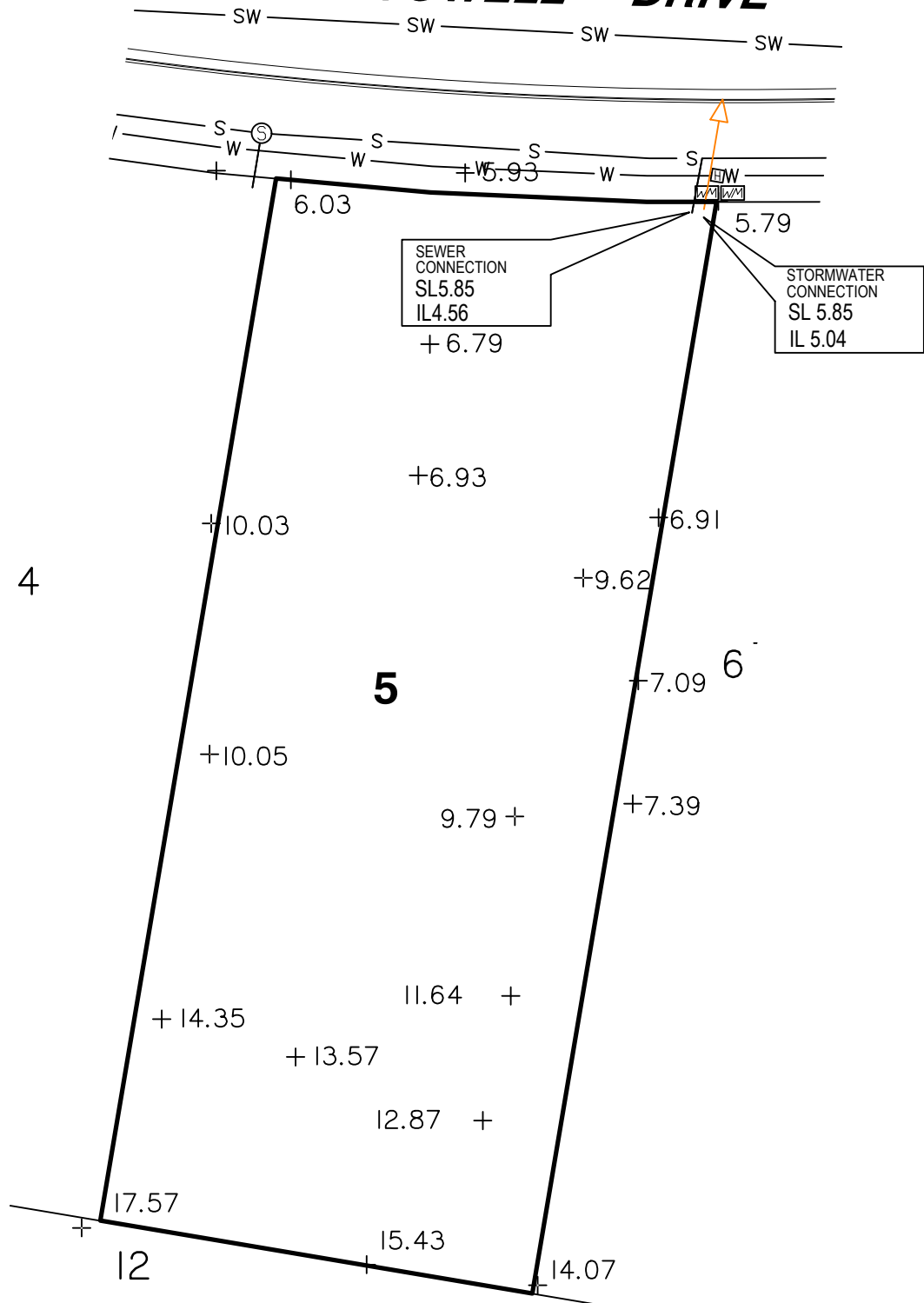
Locality	BURLEIGH HEADS	Issue Date	21/03/2023
Local Govt	GOLD COAST CITY COUNCIL	Meridian	SP316142
		Level Datum	AHD
Scale (on A4 original)	1:300	Drawn	S. Holt
		Date Drafted	14/03/2023
		Checked	T. Geraghty
REFERENCE No.	<b>5967-1B</b>		
PLAN No.	<b>5967 S SK LOT 4</b>		



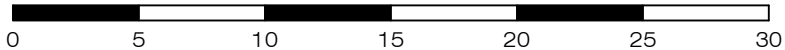
**LEGEND**

- SEWER MANHOLE
- STORMWATER MANHOLE/ MAINTENANCE SHAFT
- GULLY TRAP
- FIELD INLET
- WATER METER
- FIRE HYDRANT
- STORMWATER
- STORMWATER SWALE
- WATER PIPE
- SEWER
- + 3.44 SURFACE LEVEL
- IL INVERT LEVEL
- SL SURFACE LEVEL
- DRIVEWAY / FOOTPATH
- KERB & CHANNEL
- ROOFWATER DRAINAGE PIPE
- ROOFWATER KERB ADAPTOR
- ROOFWATER KERB ADAPTOR WITH CONNECTION TO LOT

# COWELL DRIVE



Scale 1:300 - Lengths are in Metres.



**gassman  
development  
perspectives**

planning | environment | landscape | engineering | survey  
T: 3807 3333 | F: 3287 5461 | www.gassman.com.au  
Gold Coast & Logan | 76 Business Street, Yatala QLD | PO Box 392, Beenleigh 4207

**Client**  
Burleigh Heads Estate Pty Ltd

**Project** **SERVICE LOCATION SKETCH PLAN**

**LOT 5** on SP316142

**Stage 1B, The Arbour Burleigh  
Cowell Drive, Burleigh Heads**

**Locality** BURLEIGH HEADS

**Local Govt** GOLD COAST CITY COUNCIL

**Scale (on A4 original)**  
1:300

**Issue Date** 21/03/2023

**Meridian** SP316142

**Level Datum** AHD

**Drawn** S. Holt

**Date Drafted** 14/03/2023

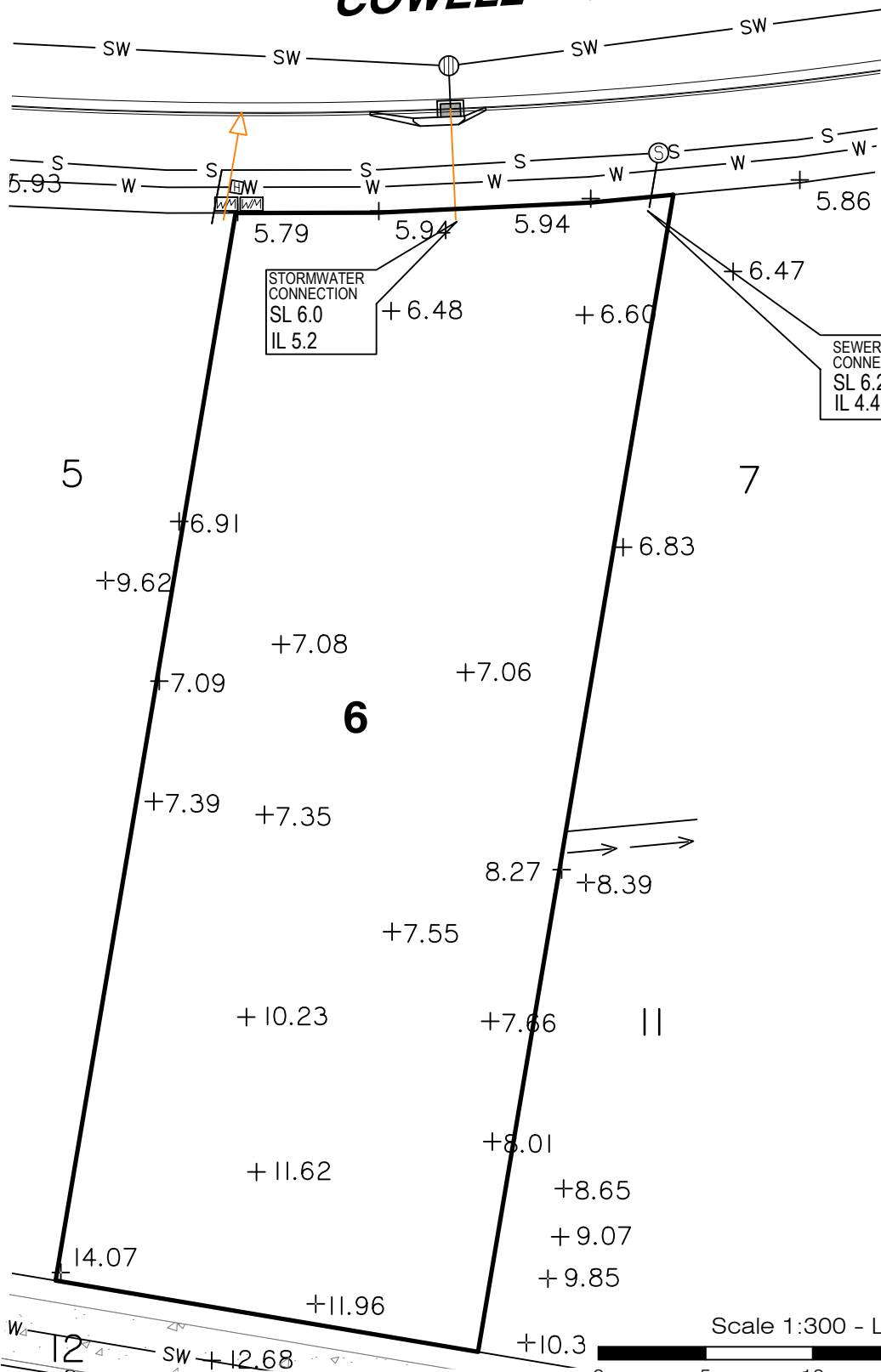
**Checked** T. Geraghty

**Real Property Description:**  
Lot 5 on SP316142

**REFERENCE No.** 5967-1B  
**PLAN No.** 5967 S SK LOT 5



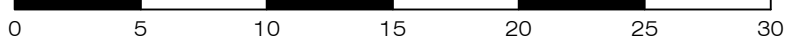
# COWELL DRIVE



### LEGEND

- SEWER MANHOLE
- STORMWATER MANHOLE/ MAINTENANCE SHAFT
- GULLY TRAP
- FIELD INLET
- WATER METER
- FIRE HYDRANT
- STORMWATER SWALE
- WATER PIPE
- SEWER
- + 3.44 SURFACE LEVEL
- IL INVERT LEVEL
- SL SURFACE LEVEL
- DRIVEWAY / FOOTPATH
- KERB & CHANNEL
- ROOFWATER DRAINAGE PIPE
- ROOFWATER KERB ADAPTOR
- ROOFWATER KERB ADAPTOR WITH CONNECTION TO LOT

Scale 1:300 - Lengths are in Metres.



**gassman development perspectives**  
 est 1985  
 planning | environment | landscape | engineering | survey  
 T: 3807 3333 | F: 3287 5461 | www.gassman.com.au  
 Gold Coast & Logan | 176 Business Street, Yatala QLD | PO Box 392, Beenleigh 4207

**Client**  
Burleigh Heads Estate Pty Ltd

**Project** **SERVICE LOCATION SKETCH PLAN**

**LOT 6** on SP316142

**Stage 1B, The Arbour Burleigh**  
**Cowell Drive, Burleigh Heads**

**Locality** BURLEIGH HEADS

**Local Govt** GOLD COAST CITY COUNCIL

**Scale (on A4 original)**  
**1:300**

**Issue Date** 21/03/2023

**Meridian** SP316142

**Level Datum** AHD

**Drawn** S. Holt

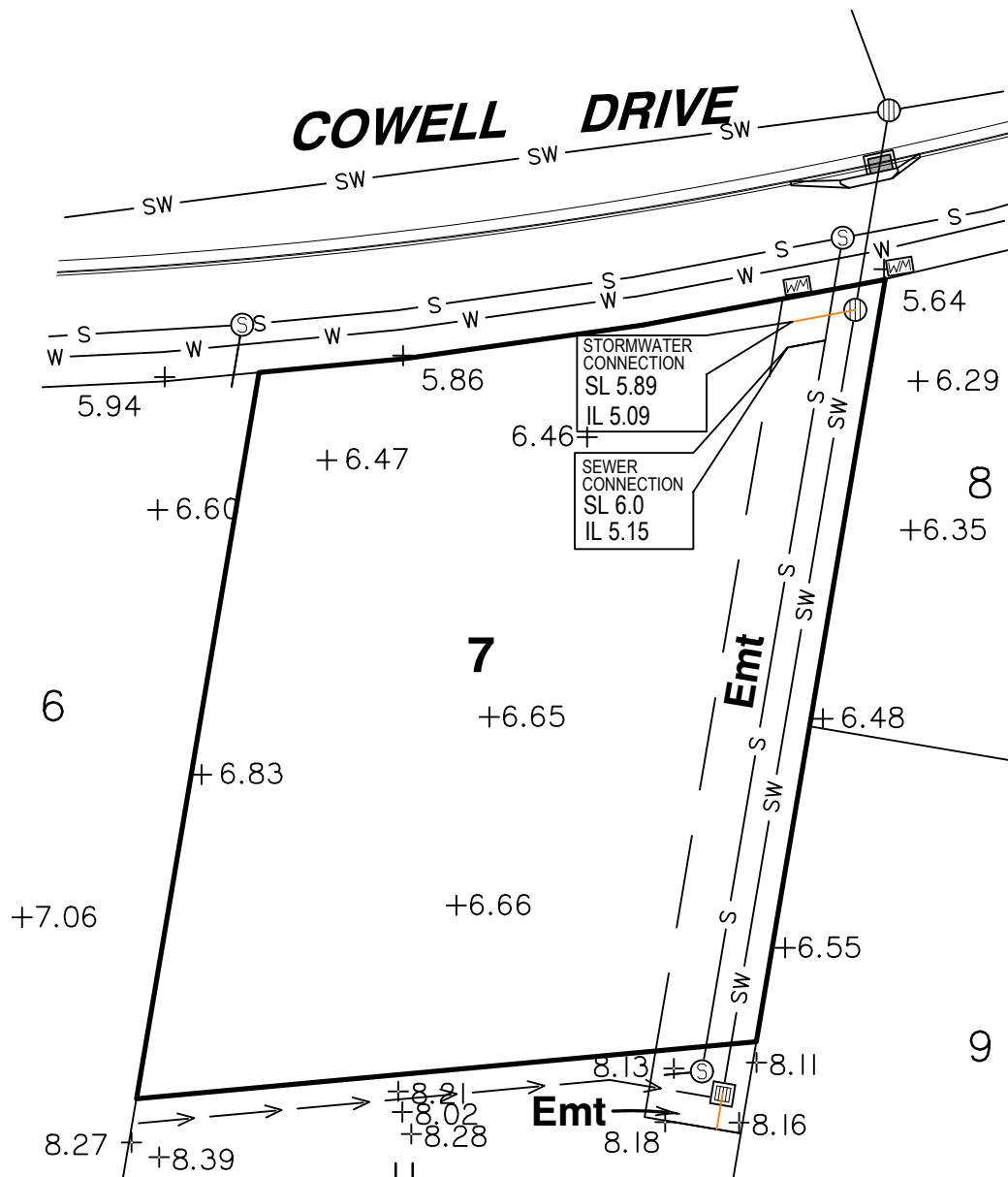
**Date Drafted** 14/03/2023

**Checked** T. Geraghty

**Real Property Description:**  
Lot 6 on SP316142

**REFERENCE No.** **5967-1B**

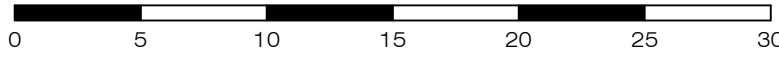
**PLAN No.** **5967 S SK LOT 6**



**LEGEND**

- SEWER MANHOLE
- STORMWATER MANHOLE/ MAINTENANCE SHAFT
- GULLY TRAP
- FIELD INLET
- WATER METER
- FIRE HYDRANT
- STORMWATER
- STORMWATER SWALE
- WATER PIPE
- SEWER
- + 3.44 SURFACE LEVEL
- IL INVERT LEVEL
- SL SURFACE LEVEL
- DRIVEWAY / FOOTPATH
- KERB & CHANNEL
- ROOFWATER DRAINAGE PIPE
- ROOFWATER KERB ADAPTOR
- ROOFWATER KERB ADAPTOR WITH CONNECTION TO LOT

Scale 1:300 - Lengths are in Metres.



T: 3807 3333 | F: 3287 5461 | www.gassman.com.au  
 Gold Coast & Logan | 76 Business Street, Yatala QLD | PO Box 392, Beenleigh 4207

**Client**  
 Burleigh Heads Estate Pty Ltd

**Project** **SERVICE LOCATION SKETCH PLAN**

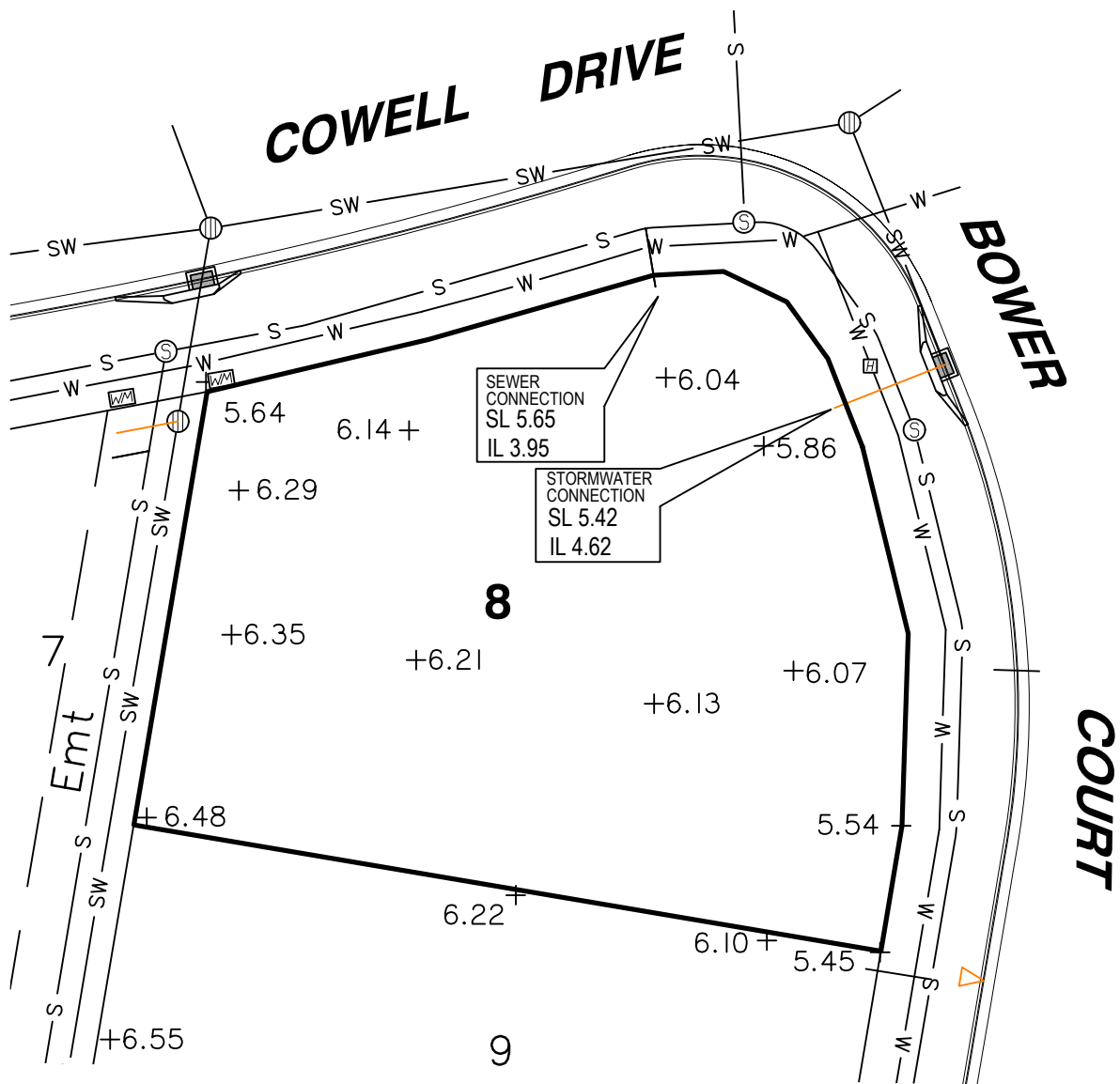
**LOT 7** on SP316142

**Stage 1B, The Arbour Burleigh  
 Cowell Drive, Burleigh Heads**

Locality	BURLEIGH HEADS	Issue Date	21/03/2023
Local Govt	GOLD COAST CITY COUNCIL	Meridian	SP316142
Scale (on A4 original)	1:300	Level Datum	AHD
		Drawn	S. Holt
		Date Drafted	14/03/2023
		Checked	T. Geraghty

**Real Property Description:**  
 Lot 7 on SP316142

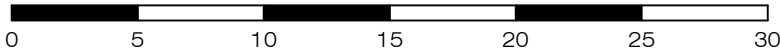
REFERENCE No. **5967-1B**  
 PLAN No. **5967 S SK LOT 7**



**LEGEND**

- ⊙ ..... SEWER MANHOLE
- ⊕ ..... STORMWATER MANHOLE/ MAINTENANCE SHAFT
- ⌒ ..... GULLY TRAP
- ⊞ ..... FIELD INLET
- ⊞ ..... WATER METER
- ⊞ ..... FIRE HYDRANT
- SW-SW ..... STORMWATER
- ..... STORMWATER SWALE
- W— ..... WATER PIPE
- S— ..... SEWER
- + 3.44 ..... SURFACE LEVEL
- IL ..... INVERT LEVEL
- SL ..... SURFACE LEVEL
- ⊞ ..... DRIVEWAY / FOOTPATH
- ⊞ ..... KERB & CHANNEL
- ..... ROOFWATER DRAINAGE PIPE
- ▽ ..... ROOFWATER KERB ADAPTOR
- ▶ ..... ROOFWATER KERB ADAPTOR WITH CONNECTION TO LOT

Scale 1:300 - Lengths are in Metres.



**gassman  
development  
perspectives**

estd 1985

planning | environment | landscape | engineering | survey

T: 3807 3333 | F: 3287 5461 | [www.gassman.com.au](http://www.gassman.com.au)

Gold Coast & Logan | 176 Business Street, Yatala QLD | PO Box 392, Beenleigh 4207

**Client**  
Burleigh Heads Estate Pty Ltd

**Project** **SERVICE LOCATION SKETCH PLAN**

**LOT 8** on SP316142

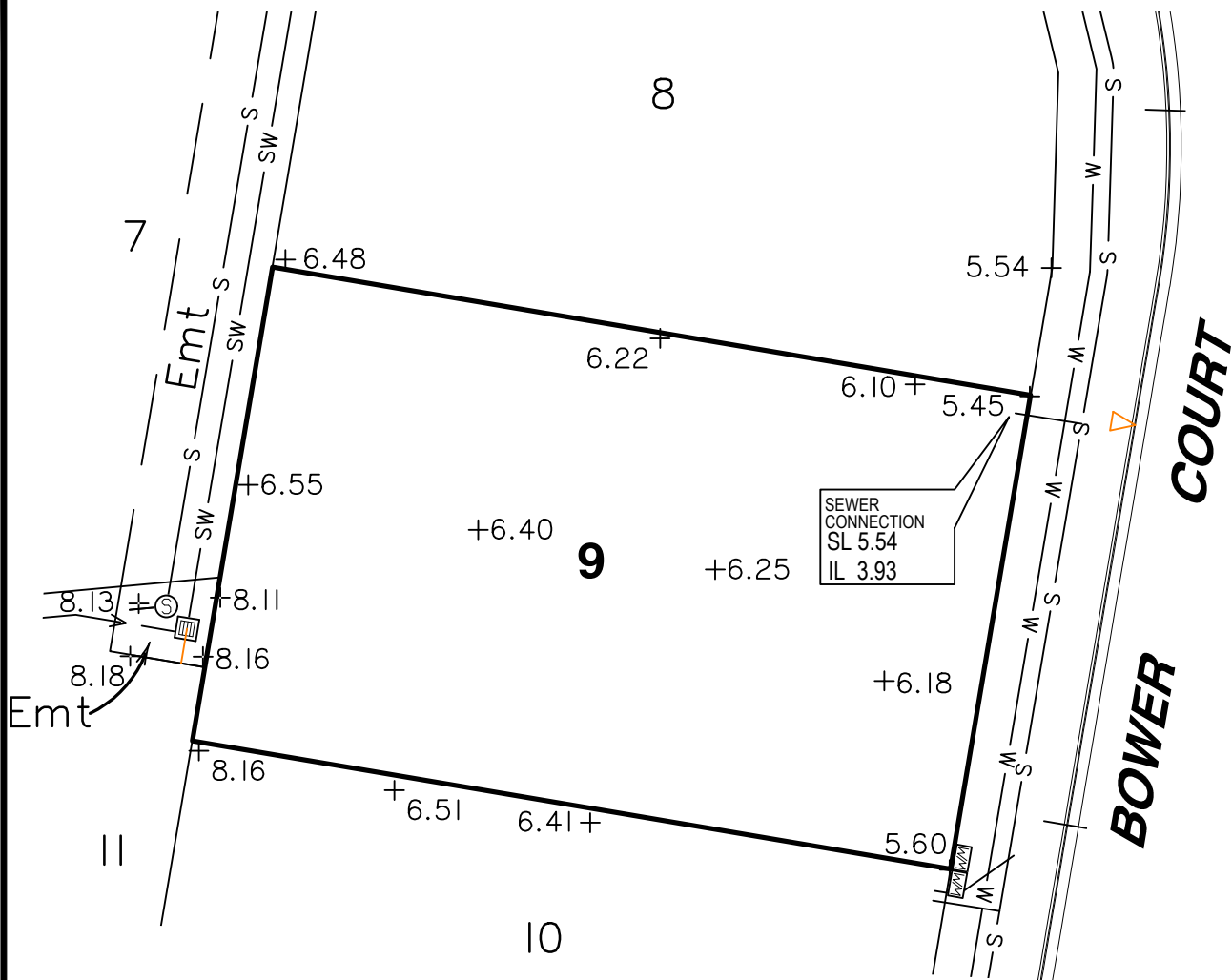
**Stage 1B, The Arbour Burleigh  
Cowell Drive, Burleigh Heads**

Locality	BURLEIGH HEADS	Issue Date	21/03/2023
Local Govt	GOLD COAST CITY COUNCIL	Meridian	SP316142
		Level Datum	AHD
Scale (on A4 original)	1:300	Drawn	S. Holt
		Date Drafted	14/03/2023
		Checked	T. Geraghty

**Real Property Description:**  
Lot 8 on SP316142

**REFERENCE No.** 5967-1B  
**PLAN No.** 5967 S SK LOT 8

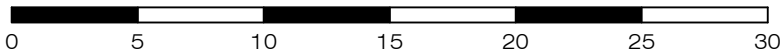




**LEGEND**

- SEWER MANHOLE
- STORMWATER MANHOLE/ MAINTENANCE SHAFT
- GULLY TRAP
- FIELD INLET
- WATER METER
- FIRE HYDRANT
- STORMWATER SWALE
- WATER PIPE
- SEWER
- + 3.44 SURFACE LEVEL
- IL INVERT LEVEL
- SL SURFACE LEVEL
- DRIVEWAY / FOOTPATH
- KERB & CHANNEL
- ROOFWATER DRAINAGE PIPE
- ROOFWATER KERB ADAPTOR
- ROOFWATER KERB ADAPTOR WITH CONNECTION TO LOT

Scale 1:300 - Lengths are in Metres.



**gassman  
development  
perspectives**

planning | environment | landscape | engineering | survey

T: 3807 3333 | F: 3287 5461 | [www.gassman.com.au](http://www.gassman.com.au)

Gold Coast & Logan | 176 Business Street, Yatala QLD | PO Box 392, Beenleigh 4207

**Client**  
Burleigh Heads Estate Pty Ltd

**Project** SERVICE LOCATION SKETCH PLAN

**LOT 9** on SP316142

**Stage 1B, The Arbour Burleigh  
Cowell Drive, Burleigh Heads**

Locality	BURLEIGH HEADS	Issue Date	21/03/2023
Local Govt	GOLD COAST CITY COUNCIL	Meridian	SP316142
Scale (on A4 original)	1:300	Level Datum	AHD
		Drawn	S. Holt
		Date Drafted	14/03/2023
		Checked	T. Geraghty

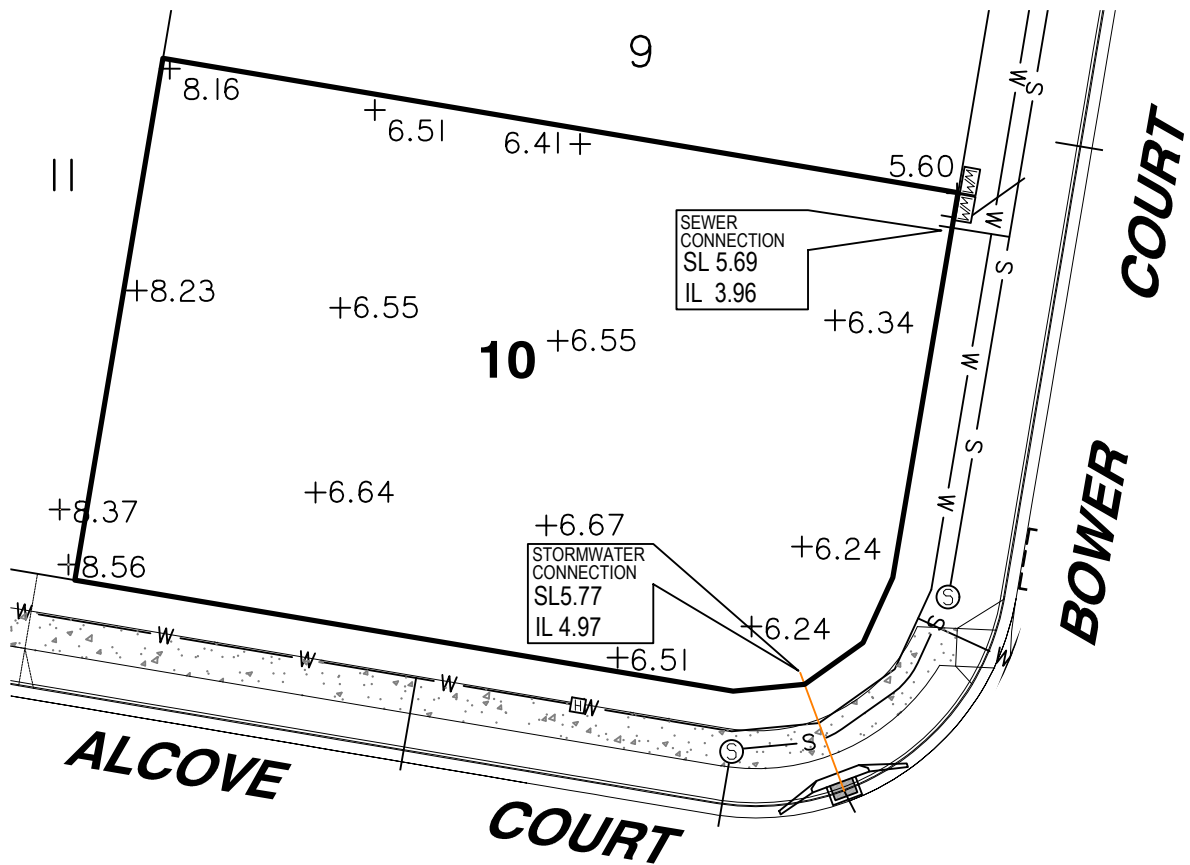
**Real Property Description:**  
Lot 9 on SP316142

**REFERENCE No.** 5967-1B  
**PLAN No.** 5967 S SK LOT 9

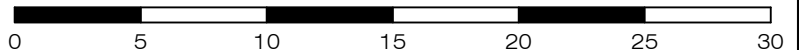


**LEGEND**

- SEWER MANHOLE
- STORMWATER MANHOLE/ MAINTENANCE SHAFT
- GULLY TRAP
- FIELD INLET
- WATER METER
- FIRE HYDRANT
- STORMWATER SWALE
- WATER PIPE
- SEWER
- + 3.44 SURFACE LEVEL
- IL INVERT LEVEL
- SL SURFACE LEVEL
- DRIVEWAY / FOOTPATH
- KERB & CHANNEL
- ROOFWATER DRAINAGE PIPE
- ROOFWATER KERB ADAPTOR
- ROOFWATER KERB ADAPTOR WITH CONNECTION TO LOT



Scale 1:300 - Lengths are in Metres.



**gassman  
development  
perspectives**

planning | environment | landscape | engineering | survey

T: 3807 3333 | F: 3287 5461 | www.gassman.com.au

Gold Coast & Logan | 76 Business Street, Yatala QLD | PO Box 392, Beenleigh 4207

**Client**  
Burleigh Heads Estate Pty Ltd

**Project** **SERVICE LOCATION SKETCH PLAN**

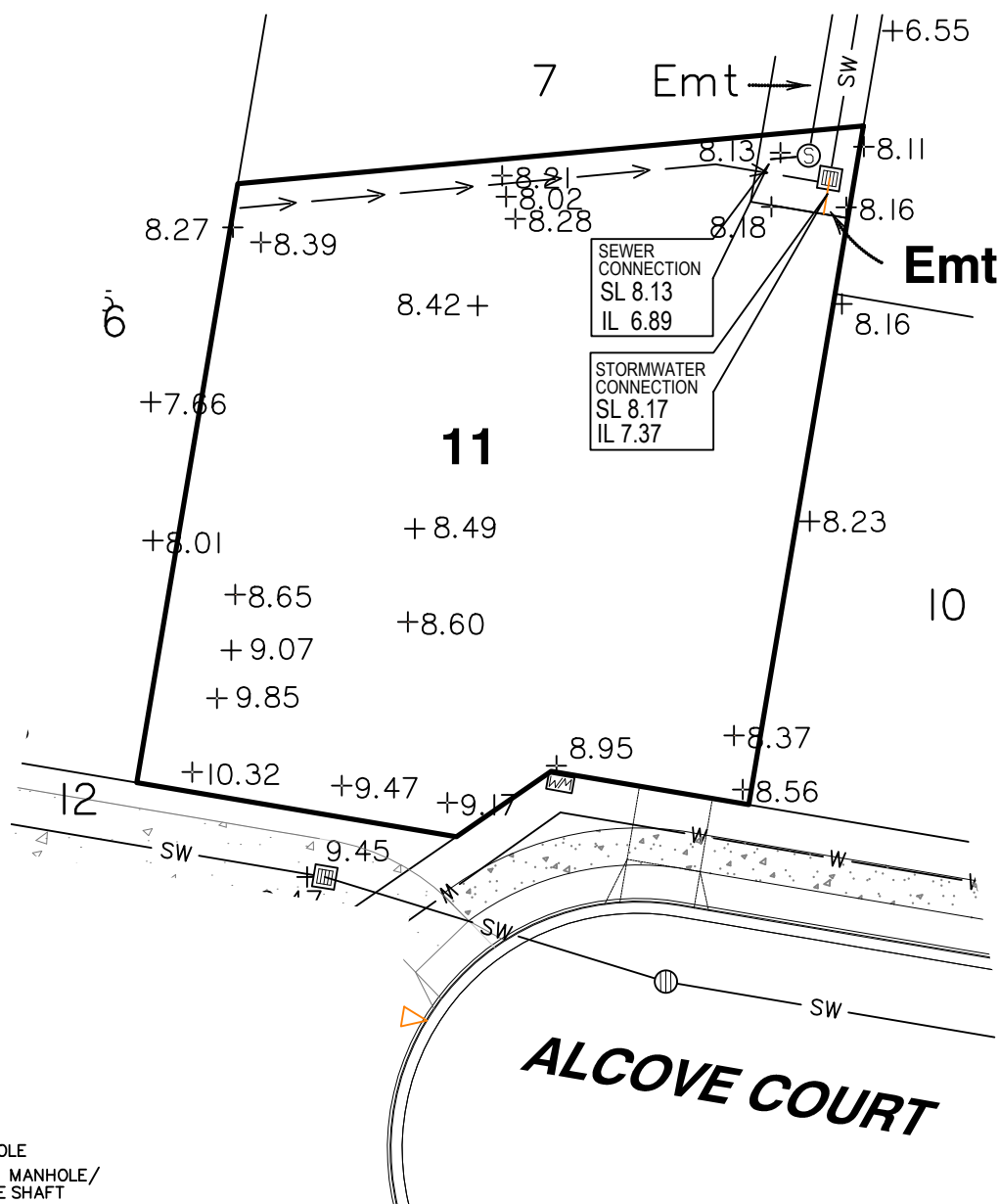
**LOT 10** on SP316142

**Stage 1B, The Arbour Burleigh  
Cowell Drive, Burleigh Heads**

Locality	BURLEIGH HEADS	Issue Date	21/03/2023
Local Govt	GOLD COAST CITY COUNCIL	Meridian	SP316142
Scale (on A4 original)	1:300	Level Datum	AHD
		Drawn	S. Holt
		Date Drafted	14/03/2023
		Checked	T. Geraghty

**Real Property Description:**  
Lot 10 on SP316142

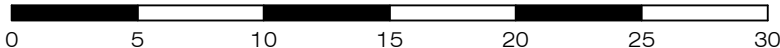
**REFERENCE No.** 5967-1B  
**PLAN No.** 5967 S SK LOT 10



**LEGEND**

- SEWER MANHOLE
- STORMWATER MANHOLE/ MAINTENANCE SHAFT
- GULLY TRAP
- FIELD INLET
- WATER METER
- FIRE HYDRANT
- STORMWATER
- STORMWATER SWALE
- WATER PIPE
- SEWER
- + 3.44 SURFACE LEVEL
- IL INVERT LEVEL
- SL SURFACE LEVEL
- DRIVEWAY / FOOTPATH
- KERB & CHANNEL
- ROOFWATER DRAINAGE PIPE
- ROOFWATER KERB ADAPTOR
- ROOFWATER KERB ADAPTOR WITH CONNECTION TO LOT

Scale 1:300 - Lengths are in Metres.



**gassman  
development  
perspectives**  
estd 1985

planning | environment | landscape | engineering | survey

T: 3807 3333 | F: 3287 5461 | [www.gassman.com.au](http://www.gassman.com.au)

Gold Coast & Logan | 176 Business Street, Yatala QLD | PO Box 392, Beenleigh 4207

**Client**  
Burleigh Heads Estate Pty Ltd

**Project** SERVICE LOCATION SKETCH PLAN

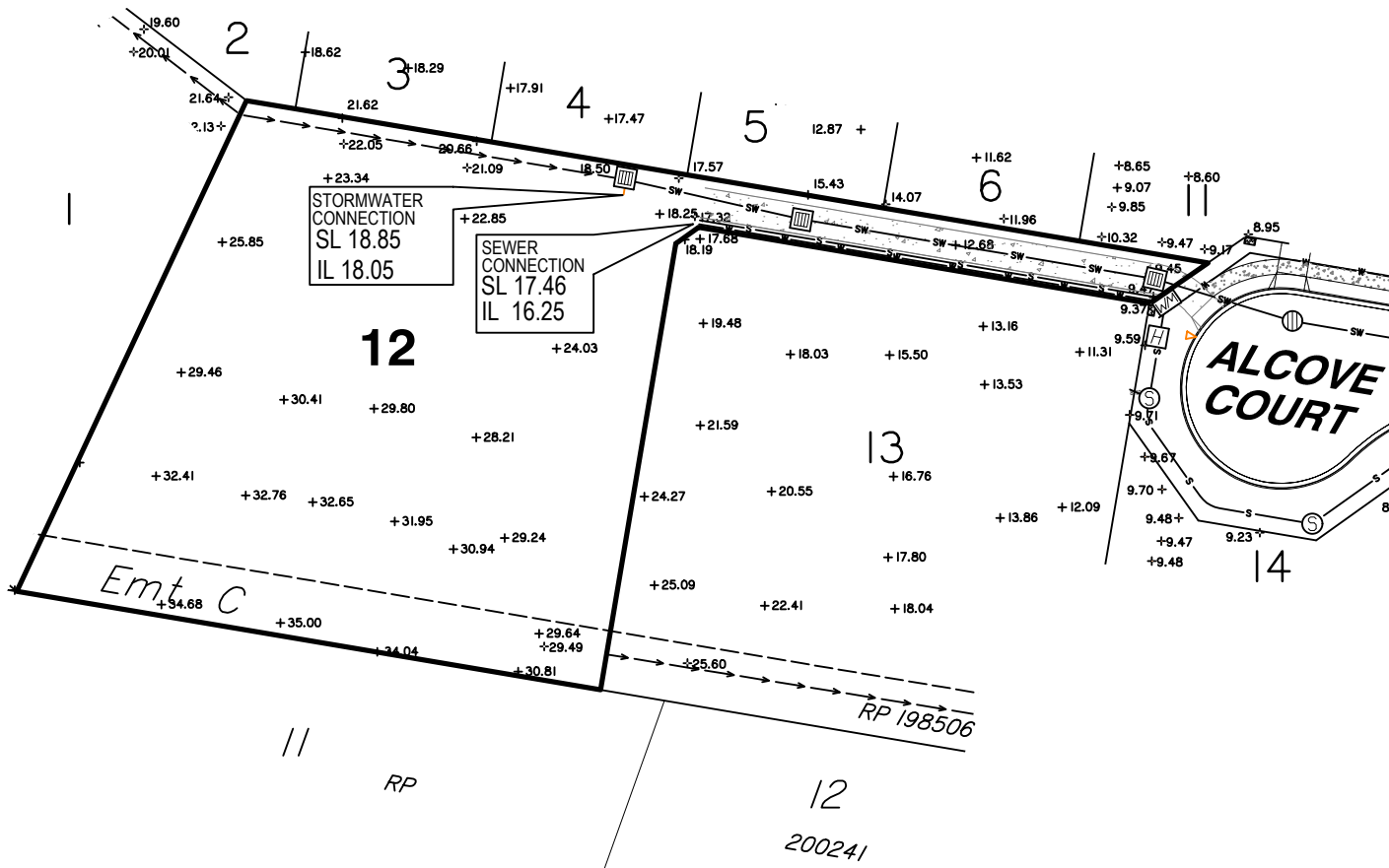
**LOT 11** on SP316142

**Stage 1B, The Arbour Burleigh  
Cowell Drive, Burleigh Heads**

<b>Locality</b>	BURLEIGH HEADS	<b>Issue Date</b>	21/03/2023
<b>Local Govt</b>	GOLD COAST CITY COUNCIL	<b>Meridian</b>	SP316142
<b>Scale (on A4 original)</b>	1:300	<b>Level Datum</b>	AHD
		<b>Drawn</b>	S. Holt
		<b>Date Drafted</b>	14/03/2023
		<b>Checked</b>	T. Geraghty

**Real Property Description:**  
Lot 11 on SP316142

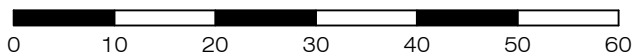
**REFERENCE No.** 5967-1B  
**PLAN No.** 5967 S SK LOT 11



**LEGEND**

- SEWER MANHOLE
- STORMWATER MANHOLE/ MAINTENANCE SHAFT
- GULLY TRAP
- FIELD INLET
- WATER METER
- FIRE HYDRANT
- SW-SW STORMWATER
- STORMWATER SWALE
- w- WATER PIPE
- s-s- SEWER
- + 3.44 SURFACE LEVEL
- IL INVERT LEVEL
- SL SURFACE LEVEL
- DRIVEWAY / FOOTPATH
- KERB & CHANNEL
- ROOFWATER DRAINAGE PIPE
- ROOFWATER KERB ADAPTOR
- ROOFWATER KERB ADAPTOR WITH CONNECTION TO LOT

Scale 1:750 - Lengths are in Metres.



**gassman  
development  
perspectives**

estd 1985

planning | environment | landscape | engineering | survey

T: 3807 3333 | F: 3287 5461 | www.gassman.com.au

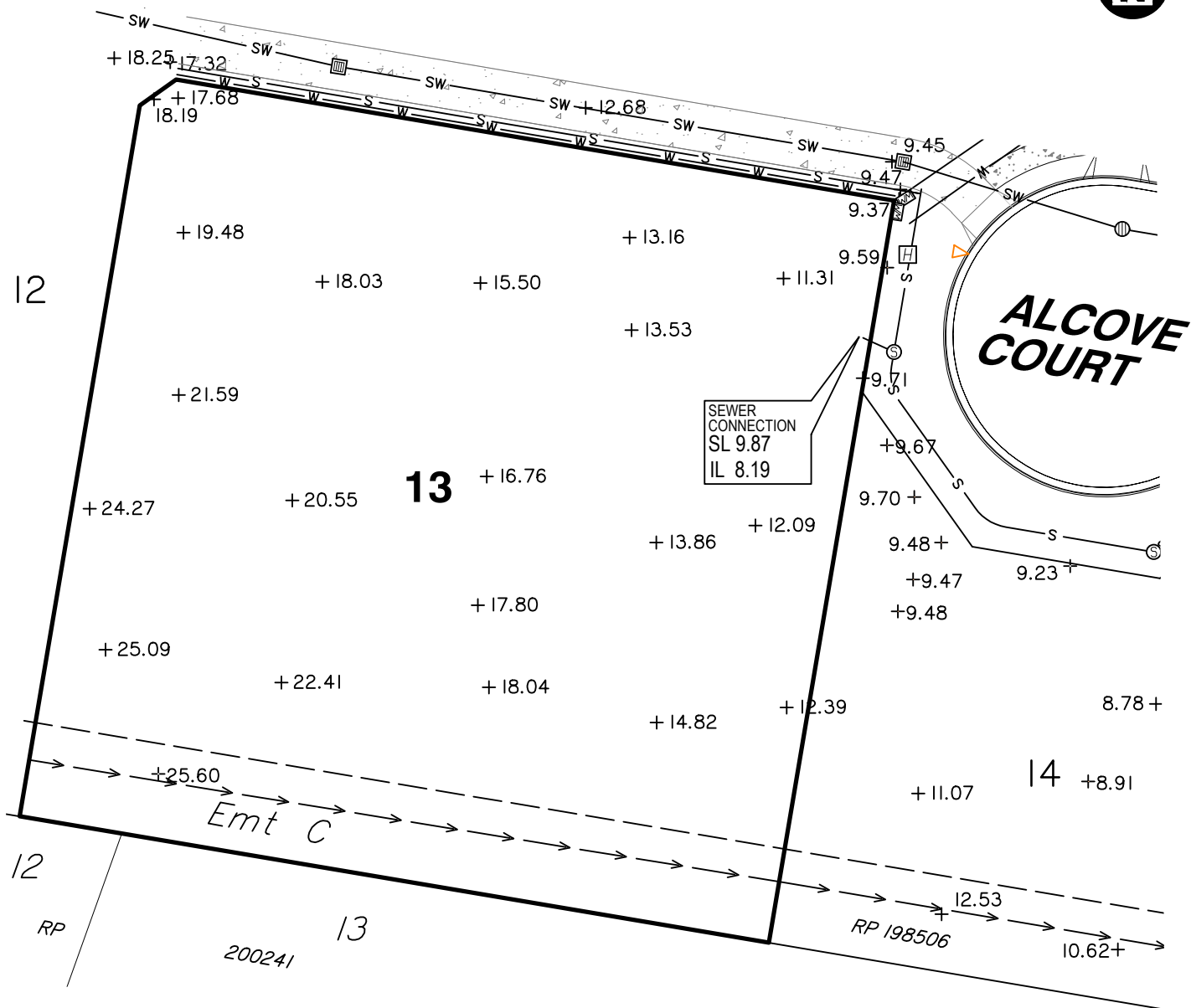
Gold Coast & Logan | 76 Business Street, Yatala QLD | PO Box 392, Beenleigh 4207

Client	<b>Burleigh Heads Estate Pty Ltd</b>
Project	<b>SERVICE LOCATION SKETCH PLAN</b>
	<b>LOT 12</b> on SP316142
	<b>Stage 1B, The Arbour Burleigh Cowell Drive, Burleigh Heads</b>

Locality	BURLEIGH HEADS	Issue Date	21/03/2023
Local Govt	GOLD COAST CITY COUNCIL	Meridian	SP316142
		Level Datum	AHD
Scale (on A4 original)	1:750	Drawn	S. Holt
		Date Drafted	14/03/2023
		Checked	T. Geraghty

**Real Property Description:**  
Lot 12 on SP316142

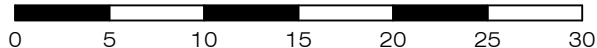
REFERENCE No. **5967-1B**  
PLAN No. **5967 S SK LOT 12**



**LEGEND**

- SEWER MANHOLE
- STORMWATER MANHOLE/ MAINTENANCE SHAFT
- GULLY TRAP
- FIELD INLET
- WATER METER
- FIRE HYDRANT
- STORMWATER
- STORMWATER SWALE
- WATER PIPE
- SEWER
- + 3.44 SURFACE LEVEL
- IL INVERT LEVEL
- SL SURFACE LEVEL
- DRIVEWAY / FOOTPATH
- KERB & CHANNEL
- ROOFWATER DRAINAGE PIPE
- ROOFWATER KERB ADAPTOR
- ROOFWATER KERB ADAPTOR WITH CONNECTION TO LOT

Scale 1:400 - Lengths are in Metres.



**gassman  
development  
perspectives**

planning | environment | landscape | engineering | survey

T: 3807 3333 | F: 3287 5461 | [www.gassman.com.au](http://www.gassman.com.au)

Gold Coast & Logan | 176 Business Street, Yatala QLD | PO Box 392, Beenleigh 4207

**Client**  
Burleigh Heads Estate Pty Ltd

**Project** **SERVICE LOCATION SKETCH PLAN**

**LOT 13** on SP316142

**Stage 1B, The Arbour Burleigh  
Cowell Drive, Burleigh Heads**

**Locality** BURLEIGH HEADS

**Local Govt** GOLD COAST CITY COUNCIL

**Scale (on A4 original)**  
1:400

**Issue Date** 21/03/2023

**Meridian** SP316142

**Level Datum** AHD

**Drawn** S. Holt

**Date Drafted** 14/03/2023

**Checked** T. Geraghty

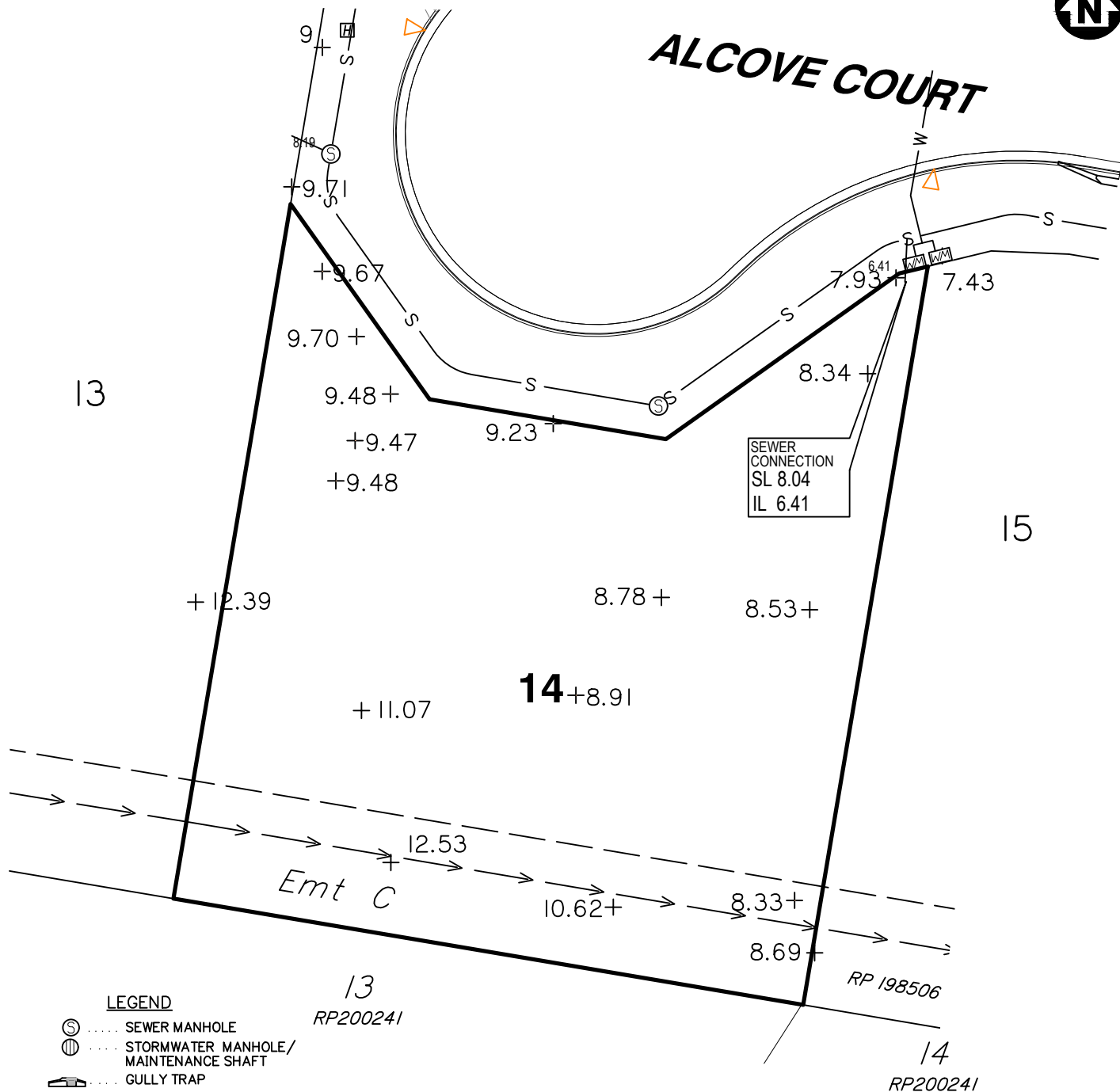
**Real Property Description:**  
Lot 13 on SP316142

**REFERENCE No.** 5967-1B

**PLAN No.** 5967 S SK LOT 13



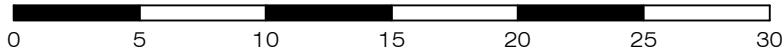
# ALCOVE COURT



### LEGEND

- SEWER MANHOLE
- STORMWATER MANHOLE/  
MAINTENANCE SHAFT
- GULLY TRAP
- FIELD INLET
- WATER METER
- FIRE HYDRANT
- STORMWATER SWALE
- WATER PIPE
- SEWER
- + 3.44 SURFACE LEVEL
- INVERT LEVEL
- SURFACE LEVEL
- DRIVEWAY / FOOTPATH
- KERB & CHANNEL
- ROOFWATER DRAINAGE PIPE
- ROOFWATER KERB ADAPTOR
- ROOFWATER KERB ADAPTOR  
WITH CONNECTION TO LOT

Scale 1:300 - Lengths are in Metres.



**gassman**  
**development**  
**perspectives**

planning | environment | landscape | engineering | survey

T: 3807 3333 | F: 3287 5461 | [www.gassman.com.au](http://www.gassman.com.au)

Gold Coast & Logan | 176 Business Street, Yatala QLD | PO Box 392, Beenleigh 4207

Client

**Burleigh Heads Estate Pty Ltd**

Project

**SERVICE LOCATION SKETCH PLAN**

**LOT 14** on SP316142

**Stage 1B, The Arbour Burleigh  
Cowell Drive, Burleigh Heads**

Real Property Description:

Lot 14 on SP316142

Locality BURLEIGH HEADS

Local Govt GOLD COAST  
CITY COUNCIL

Scale (on A4 original)

**1:300**

Issue Date 21/03/2023

Meridian SP316142

Level Datum AHD

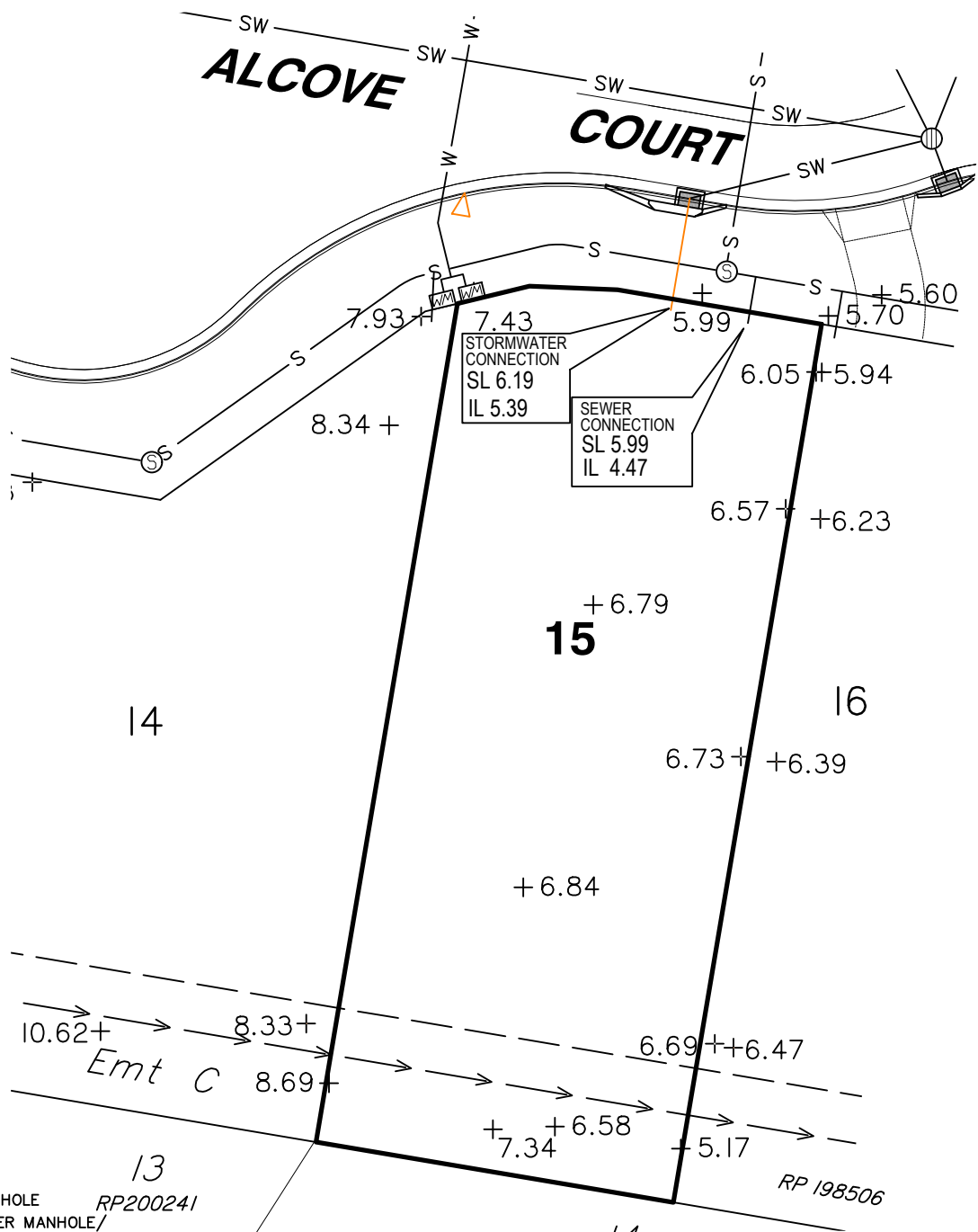
Drawn S. Holt

Date Drafted 14/03/2023

Checked T. Geraghty

REFERENCE No. **5967-1B**

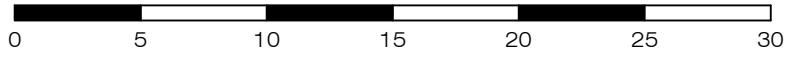
PLAN No. **5967 S SK LOT 14**



**LEGEND**

- SEWER MANHOLE
- STORMWATER MANHOLE/ MAINTENANCE SHAFT
- GULLY TRAP
- FIELD INLET
- WATER METER
- FIRE HYDRANT
- SW-SW STORMWATER
- STORMWATER SWALE
- W-W WATER PIPE
- S-S SEWER
- + 3.44 SURFACE LEVEL
- IL INVERT LEVEL
- SL SURFACE LEVEL
- DRIVEWAY / FOOTPATH
- KERB & CHANNEL
- ROOFWATER DRAINAGE PIPE
- ROOFWATER KERB ADAPTOR
- ROOFWATER KERB ADAPTOR WITH CONNECTION TO LOT

Scale 1:300 - Lengths are in Metres.



**gassman  
development  
perspectives**

planning | environment | landscape | engineering | survey

T: 3807 3333 | F: 3287 5461 | [www.gassman.com.au](http://www.gassman.com.au)

Gold Coast & Logan | 176 Business Street, Yatala QLD | PO Box 392, Beenleigh 4207

**Client**  
Burleigh Heads Estate Pty Ltd

**Project** **SERVICE LOCATION SKETCH PLAN**

**LOT 15** on SP316142

**Stage 1B, The Arbour Burleigh  
Cowell Drive, Burleigh Heads**

**Locality** BURLEIGH HEADS

**Local Govt** GOLD COAST CITY COUNCIL

**Scale (on A4 original)**  
1:300

**Issue Date** 21/03/2023

**Meridian** SP316142

**Level Datum** AHD

**Drawn** S. Holt

**Date Drafted** 14/03/2023

**Checked** T. Geraghty

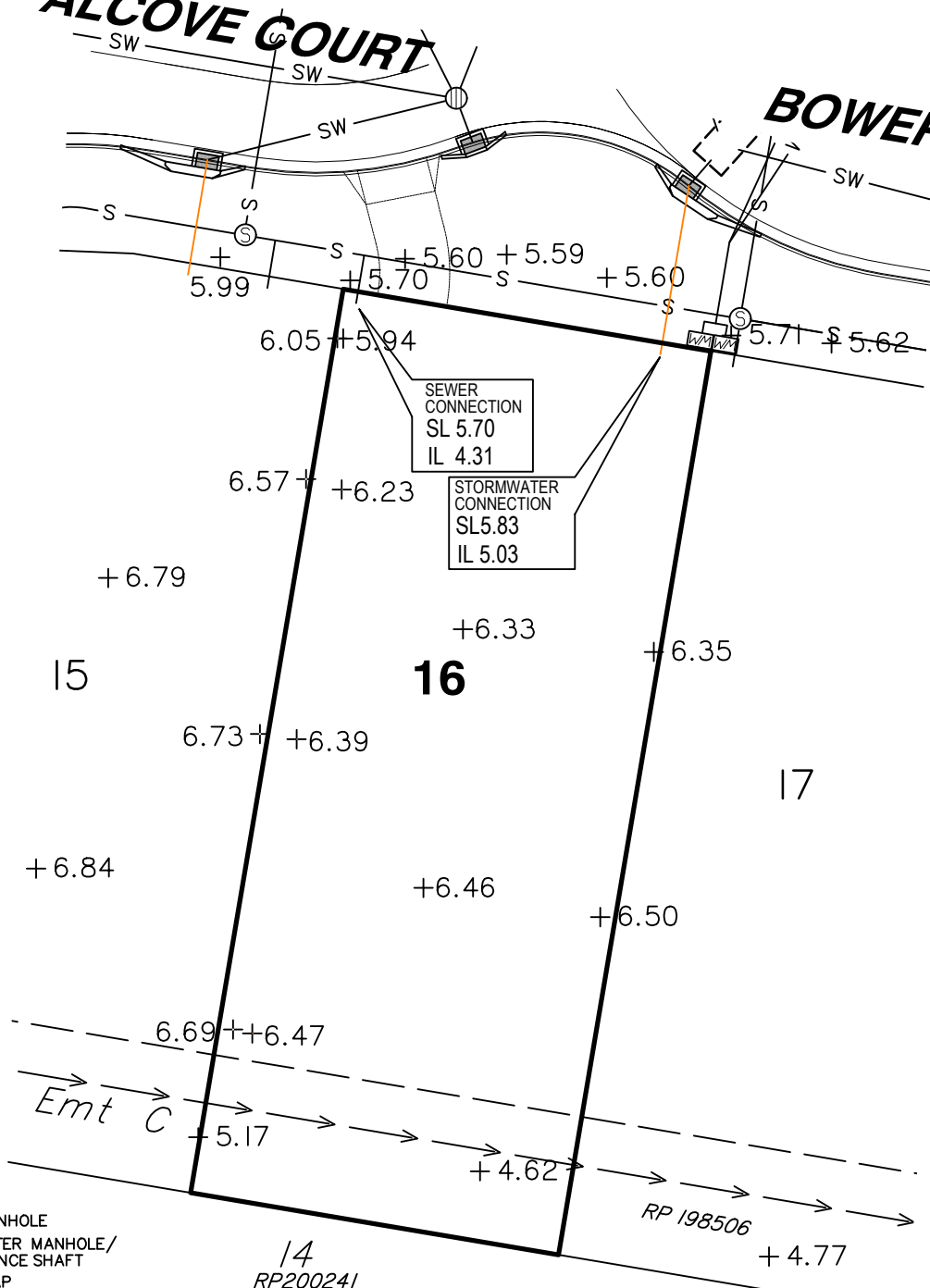
**Real Property Description:**  
Lot 15 on SP316142

**REFERENCE No.** 5967-1B

**PLAN No.** 5967 S SK LOT 15

**ALCOVE COURT**

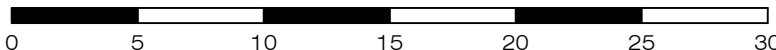
**BOWER COURT**



**LEGEND**

- ⊙ ..... SEWER MANHOLE
- ⊕ ..... STORMWATER MANHOLE/ MAINTENANCE SHAFT
- ⊓ ..... GULLY TRAP
- ⊓ ..... FIELD INLET
- ⊓ ..... WATER METER
- ⊓ ..... FIRE HYDRANT
- SW-SW ..... STORMWATER
- ..... STORMWATER SWALE
- w- ..... WATER PIPE
- s-s- ..... SEWER
- + 3.44 ..... SURFACE LEVEL
- IL ..... INVERT LEVEL
- SL ..... SURFACE LEVEL
- ⊓ ..... DRIVEWAY / FOOTPATH
- ⊓ ..... KERB & CHANNEL
- ..... ROOFWATER DRAINAGE PIPE
- ▽ ..... ROOFWATER KERB ADAPTOR
- ▶ ..... ROOFWATER KERB ADAPTOR WITH CONNECTION TO LOT

Scale 1:300 - Lengths are in Metres.



**gassman  
development  
perspectives**  
est 1985

planning | environment | landscape | engineering | survey

T: 3807 3333 | F: 3287 5461 | www.gassman.com.au

Gold Coast & Logan | 176 Business Street, Yatala QLD | PO Box 392, Beenleigh 4207

Client	<b>Burleigh Heads Estate Pty Ltd</b>
Project	<b>SERVICE LOCATION SKETCH PLAN</b>
	<b>LOT 16</b> on SP316142
	<b>Stage 1B, The Arbour Burleigh Cowell Drive, Burleigh Heads</b>

Locality	BURLEIGH HEADS	Issue Date	21/03/2023
Local Govt	GOLD COAST CITY COUNCIL	Meridian	SP316142
		Level Datum	AHD
Scale (on A4 original)	1:300	Drawn	S. Holt
		Date Drafted	14/03/2023
		Checked	T. Geraghty

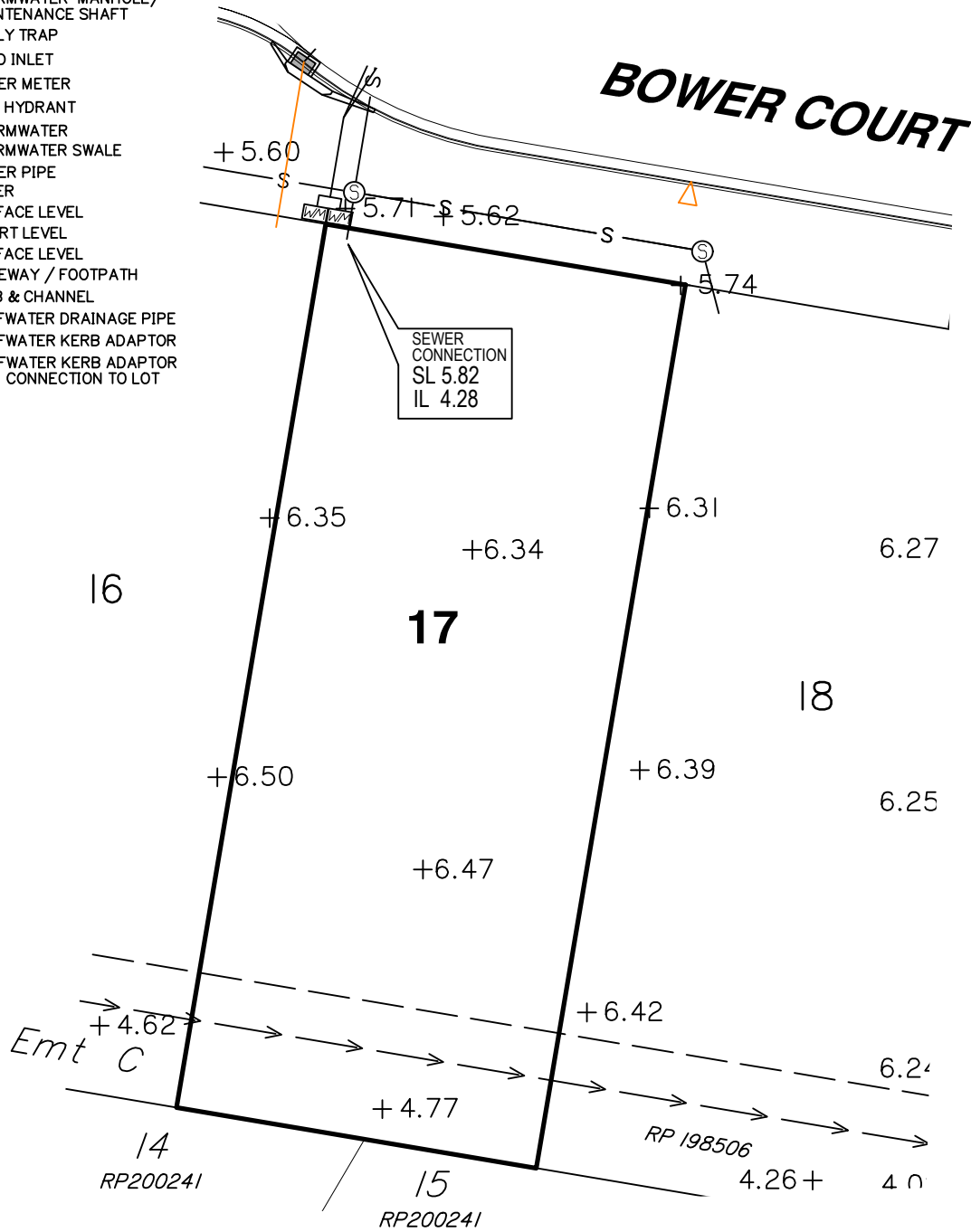
**Real Property Description:**  
Lot 16 on SP316142

REFERENCE No. **5967-1B**  
PLAN No. **5967 S SK LOT 16**

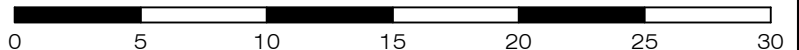


**LEGEND**

- ⊙ ..... SEWER MANHOLE
- ⊕ ..... STORMWATER MANHOLE/  
MAINTENANCE SHAFT
- ⌒ ..... GULLY TRAP
- ⊞ ..... FIELD INLET
- ⊞ ..... WATER METER
- ⊞ ..... FIRE HYDRANT
- SW-SW ..... STORMWATER
- ..... STORMWATER SWALE
- w ..... WATER PIPE
- s ..... SEWER
- + 3.44 ..... SURFACE LEVEL
- IL ..... INVERT LEVEL
- SL ..... SURFACE LEVEL
- ▭ ..... DRIVEWAY / FOOTPATH
- ▬ ..... KERB & CHANNEL
- (orange) ..... ROOFWATER DRAINAGE PIPE
- ▽ (orange) ..... ROOFWATER KERB ADAPTOR
- ▷ (orange) ..... ROOFWATER KERB ADAPTOR  
WITH CONNECTION TO LOT



Scale 1:300 - Lengths are in Metres.



planning | environment | landscape | engineering | survey  
 T: 3807 3333 | F: 3287 5461 | www.gassman.com.au  
 Gold Coast & Logan | 76 Business Street, Yatala QLD | PO Box 392, Beenleigh 4207

**Client**  
 Burleigh Heads Estate Pty Ltd

**Project** **SERVICE LOCATION SKETCH PLAN**  
 LOT 17 on SP316142  
 Stage 1B, The Arbour Burleigh  
 Cowell Drive, Burleigh Heads

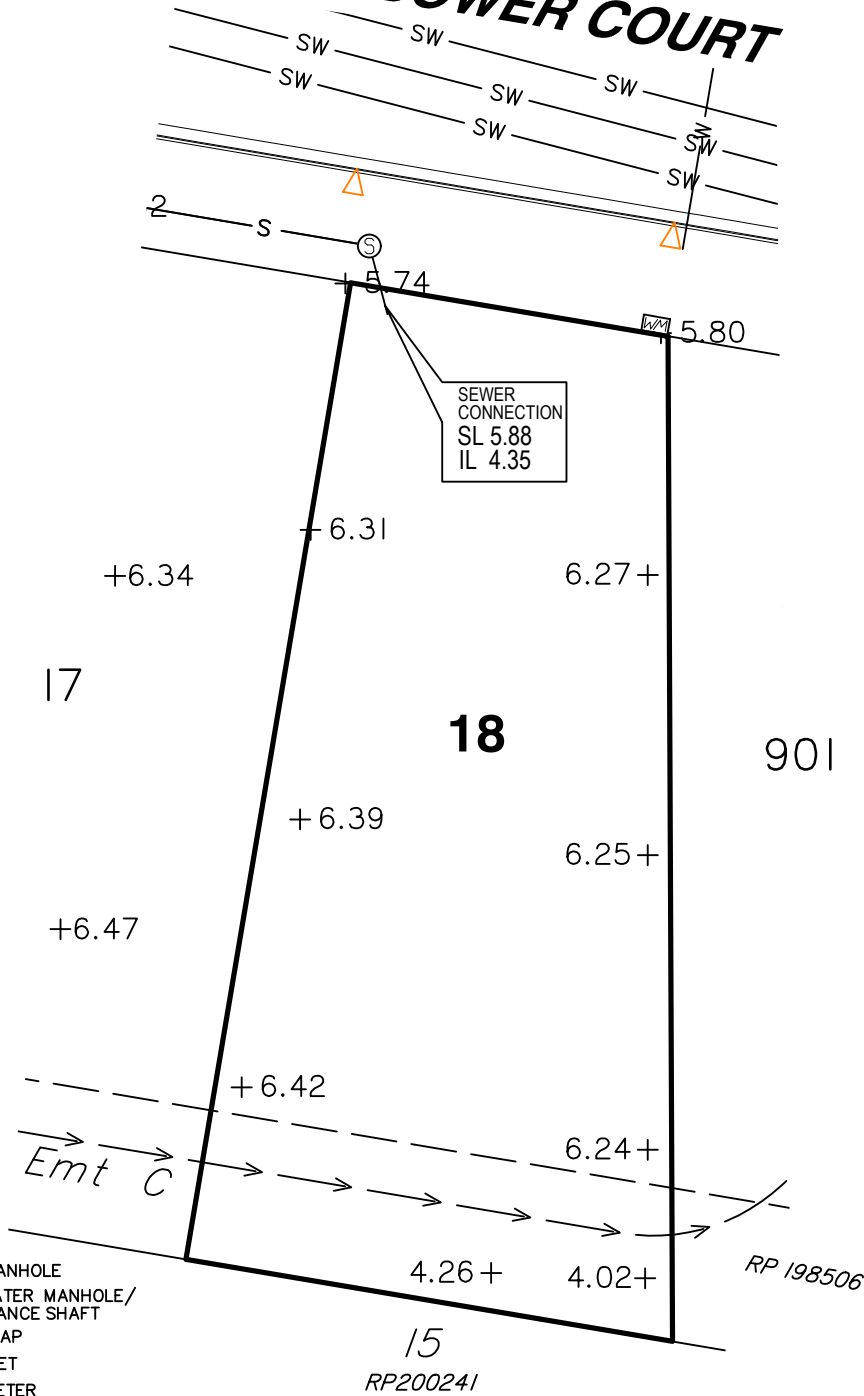
Locality	BURLEIGH HEADS	Issue Date	21/03/2023
Local Govt	GOLD COAST CITY COUNCIL	Meridian	SP316142
Scale (on A4 original)	1:300	Level Datum	AHD
		Drawn	S. Holt
		Date Drafted	14/03/2023
		Checked	T. Geraghty

**Real Property Description:**  
 Lot 17 on SP316142

REFERENCE No. **5967-1B**  
 PLAN No. **5967 S SK LOT 17**



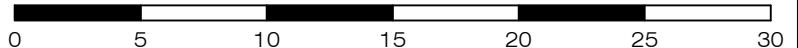
# BOWER COURT



### LEGEND

- SEWER MANHOLE
- STORMWATER MANHOLE/ MAINTENANCE SHAFT
- GULLY TRAP
- FIELD INLET
- WATER METER
- FIRE HYDRANT
- STORMWATER
- STORMWATER SWALE
- WATER PIPE
- SEWER
- + 3.44 SURFACE LEVEL
- IL INVERT LEVEL
- SL SURFACE LEVEL
- DRIVEWAY / FOOTPATH
- KERB & CHANNEL
- ROOFWATER DRAINAGE PIPE
- ROOFWATER KERB ADAPTOR
- ROOFWATER KERB ADAPTOR WITH CONNECTION TO LOT

Scale 1:300 - Lengths are in Metres.



**gassman  
development  
perspectives**

estd 1985

planning | environment | landscape | engineering | survey

T: 3807 3333 | F: 3287 5461 | [www.gassman.com.au](http://www.gassman.com.au)

Gold Coast & Logan | 176 Business Street, Yatala QLD | PO Box 392, Beenleigh 4207

**Client**  
Burleigh Heads Estate Pty Ltd

**Project** **SERVICE LOCATION SKETCH PLAN**

**LOT 18** on SP316142

**Stage 1B, The Arbour Burleigh  
Cowell Drive, Burleigh Heads**

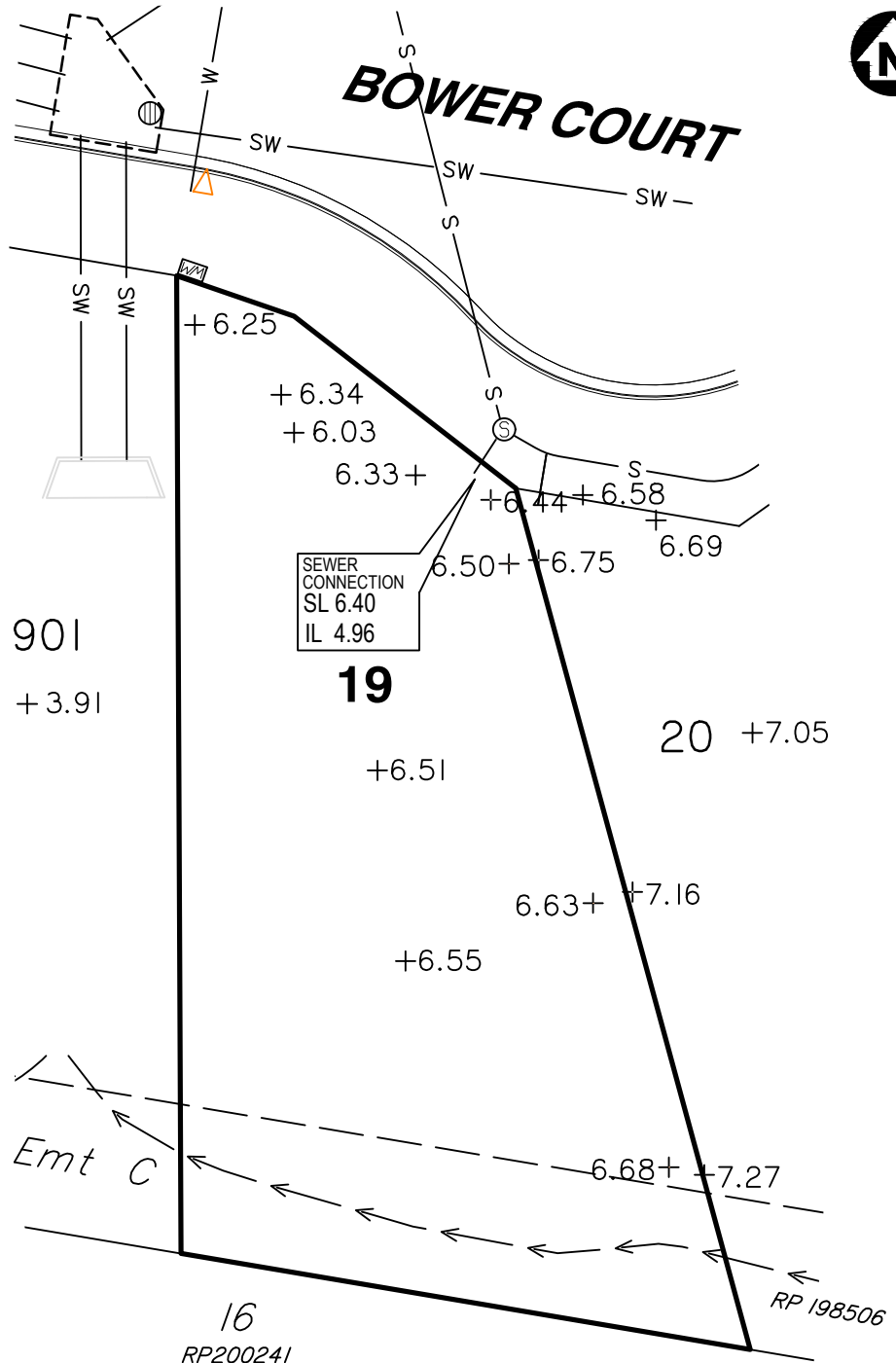
Locality	BURLEIGH HEADS	Issue Date	21/03/2023
Local Govt	GOLD COAST CITY COUNCIL	Meridian	SP316142
		Level Datum	AHD
Scale (on A4 original)	1:300	Drawn	S. Holt
		Date Drafted	14/03/2023
		Checked	T. Geraghty

**Real Property Description:**  
Lot 18 on SP316142

REFERENCE No. **5967-1B**  
PLAN No. **5967 S SK LOT 18**



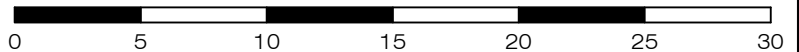
# BOWER COURT



### LEGEND

- SEWER MANHOLE
- STORMWATER MANHOLE/ MAINTENANCE SHAFT
- GULLY TRAP
- FIELD INLET
- WATER METER
- FIRE HYDRANT
- STORMWATER
- STORMWATER SWALE
- WATER PIPE
- SEWER
- + 3.44 SURFACE LEVEL
- IL INVERT LEVEL
- SL SURFACE LEVEL
- DRIVEWAY / FOOTPATH
- KERB & CHANNEL
- ROOFWATER DRAINAGE PIPE
- ROOFWATER KERB ADAPTOR
- ROOFWATER KERB ADAPTOR WITH CONNECTION TO LOT

Scale 1:300 - Lengths are in Metres.



**gassman**  
**development**  
**perspectives**

planning | environment | landscape | engineering | survey

T: 3807 3333 | F: 3287 5461 | [www.gassman.com.au](http://www.gassman.com.au)

Gold Coast & Logan | 176 Business Street, Yatala QLD | PO Box 392, Beenleigh 4207

**Client**  
Burleigh Heads Estate Pty Ltd

**Project** **SERVICE LOCATION SKETCH PLAN**

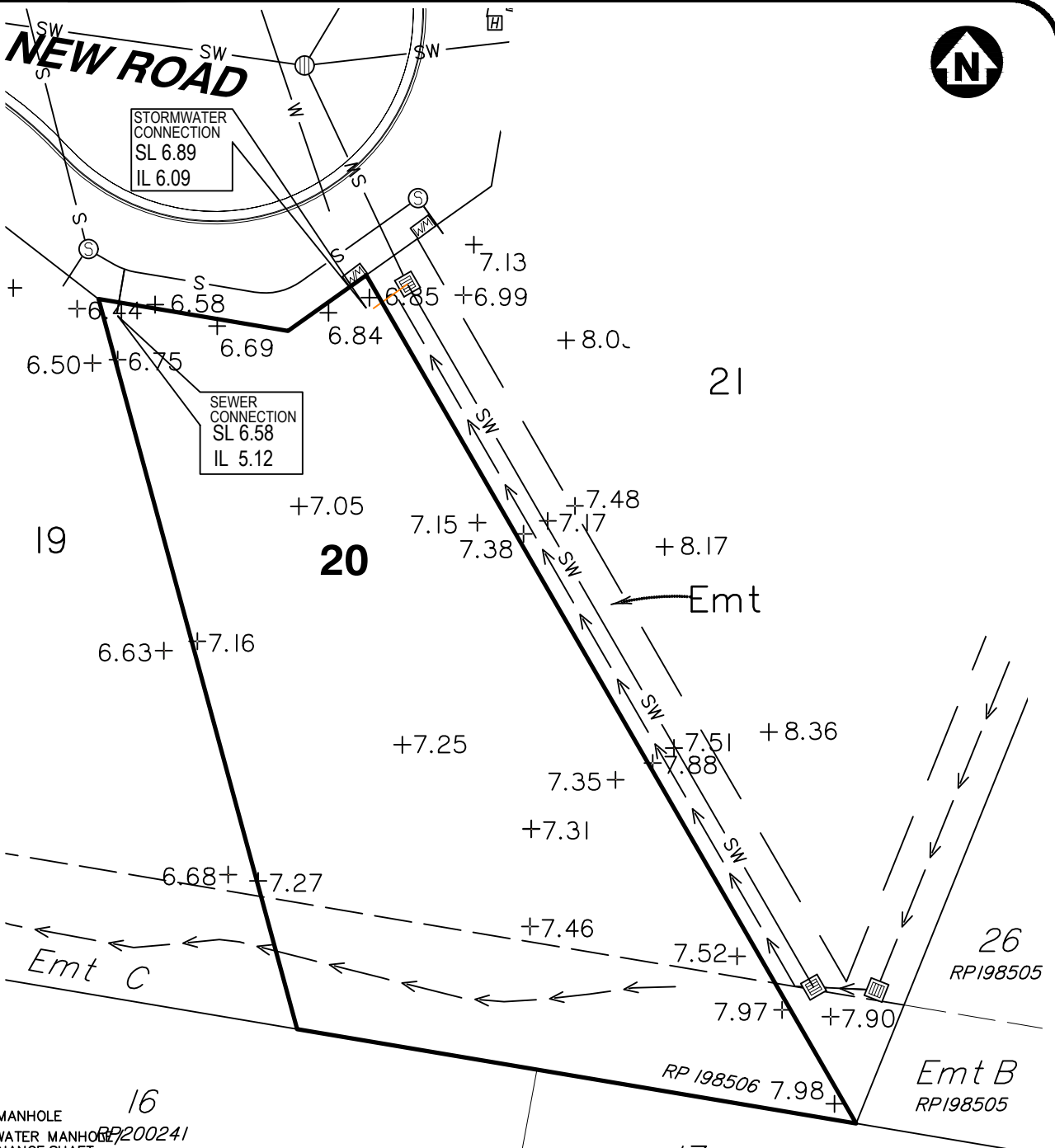
**LOT 19** on SP316142

**Stage 1B, The Arbour Burleigh**  
**Cowell Drive, Burleigh Heads**

Locality	BURLEIGH HEADS	Issue Date	21/03/2023
Local Govt	GOLD COAST CITY COUNCIL	Meridian	SP316142
Scale (on A4 original)	1:300	Level Datum	AHD
		Drawn	S. Holt
		Date Drafted	14/03/2023
		Checked	T. Geraghty

**Real Property Description:**  
Lot 19 on SP316142

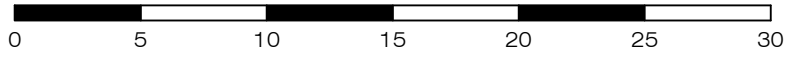
**REFERENCE No.** 5967-1B  
**PLAN No.** 5967 S SK LOT 19



**LEGEND**

- SEWER MANHOLE
- STORMWATER MANHOLE
- MAINTENANCE SHAFT
- GULLY TRAP
- FIELD INLET
- WATER METER
- FIRE HYDRANT
- STORMWATER
- STORMWATER SWALE
- WATER PIPE
- SEWER
- $+ 3.44$  SURFACE LEVEL
- IL INVERT LEVEL
- SL SURFACE LEVEL
- DRIVEWAY / FOOTPATH
- KERB & CHANNEL
- ROOFWATER DRAINAGE PIPE
- ROOFWATER KERB ADAPTOR
- ROOFWATER KERB ADAPTOR WITH CONNECTION TO LOT

Scale 1:300 - Lengths are in Metres.



**gassman  
development  
perspectives**  
estd 1985

planning | environment | landscape | engineering | survey

T: 3807 3333 | F: 3287 5461 | [www.gassman.com.au](http://www.gassman.com.au)

Gold Coast & Logan | 176 Business Street, Yatala QLD | PO Box 392, Beenleigh 4207

**Client**  
Burleigh Heads Estate Pty Ltd

**Project** **SERVICE LOCATION SKETCH PLAN**

**LOT 20** on SP316142

**Stage 1B, The Arbour Burleigh  
Cowell Drive, Burleigh Heads**

Locality BURLEIGH HEADS

Local Govt GOLD COAST CITY COUNCIL

Scale (on A4 original)  
**1:300**

**Issue Date** 21/03/2023

**Meridian** SP316142

**Level Datum** AHD

**Drawn** S. Holt

**Date Drafted** 14/03/2023

**Checked** T. Geraghty

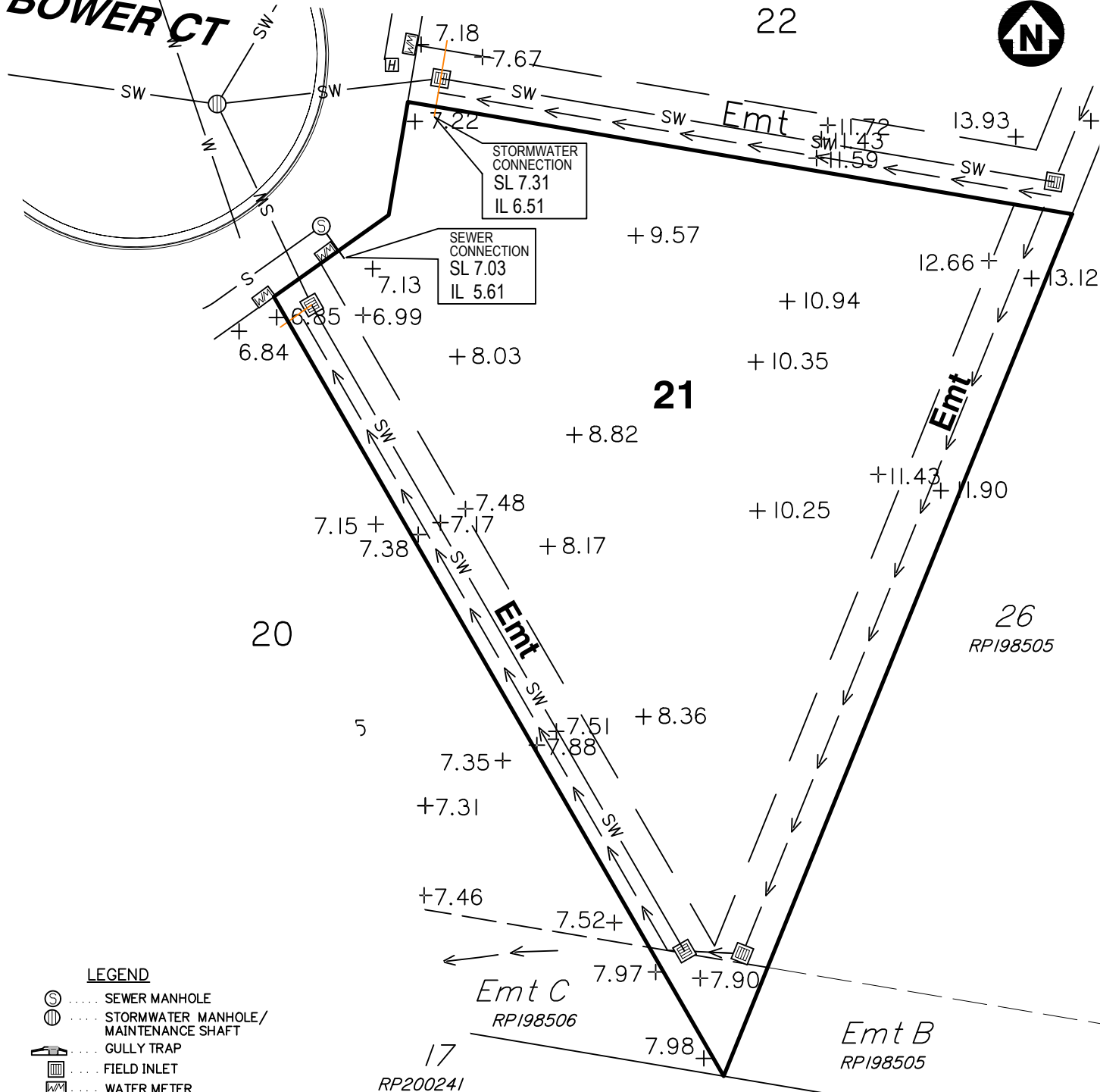
**Real Property Description:**  
Lot 20 on SP316142

**REFERENCE No.** **5967-1B**

**PLAN No.** **5967 S SK LOT 20**

**BOWER CT**

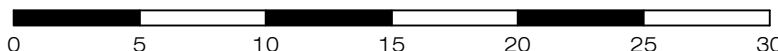
22



**LEGEND**

- SEWER MANHOLE
- STORMWATER MANHOLE/ MAINTENANCE SHAFT
- GULLY TRAP
- FIELD INLET
- WATER METER
- FIRE HYDRANT
- STORMWATER
- STORMWATER SWALE
- WATER PIPE
- SEWER
- + 3.44 SURFACE LEVEL
- IL INVERT LEVEL
- SL SURFACE LEVEL
- DRIVEWAY / FOOTPATH
- KERB & CHANNEL
- ROOFWATER DRAINAGE PIPE
- ROOFWATER KERB ADAPTOR
- ROOFWATER KERB ADAPTOR WITH CONNECTION TO LOT

Scale 1:300 - Lengths are in Metres.



**gassman  
development  
perspectives**

planning | environment | landscape | engineering | survey

T: 3807 3333 | F: 3287 5461 | www.gassman.com.au

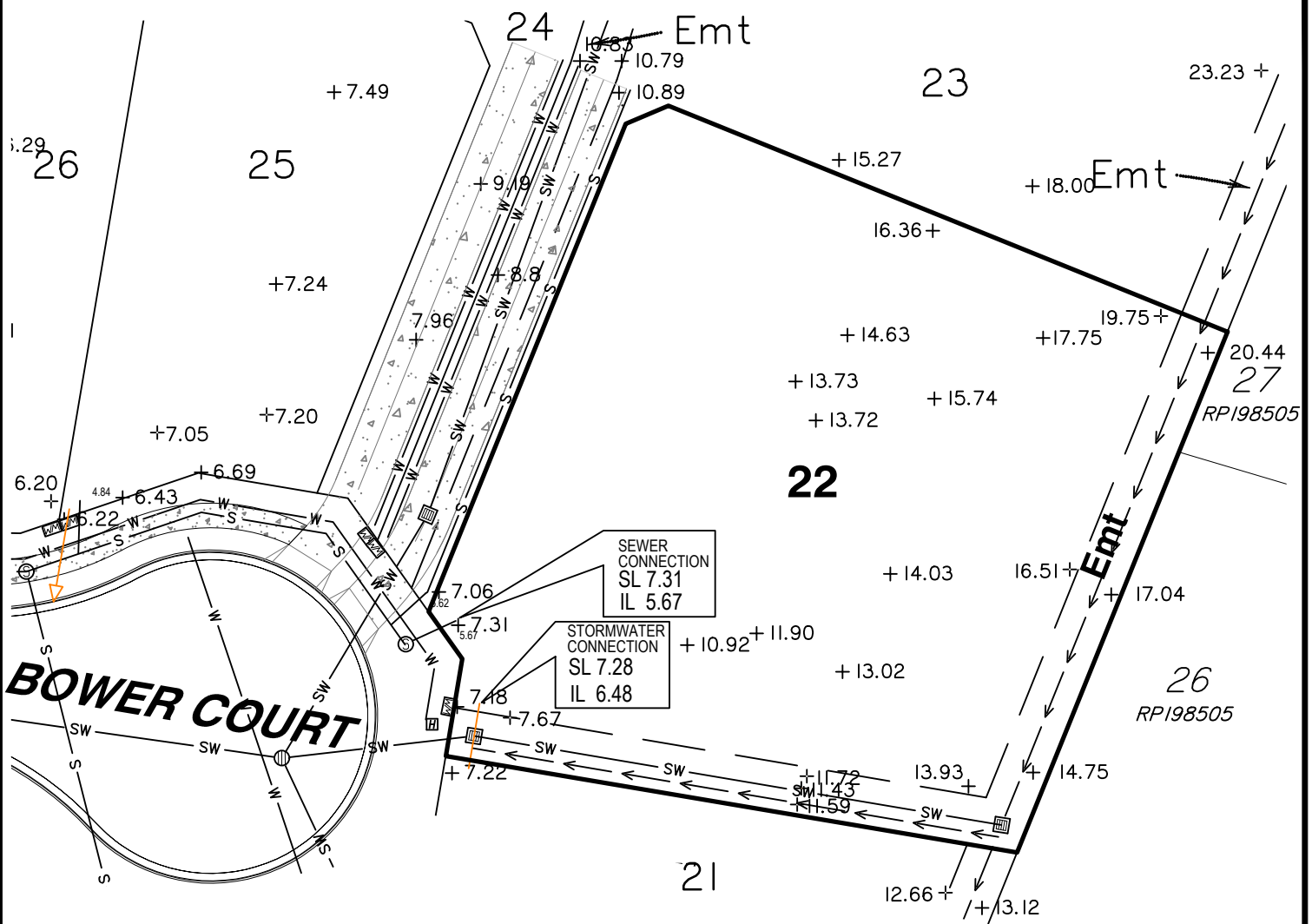
Gold Coast & Logan | 176 Business Street, Yatala QLD | PO Box 392, Beenleigh 4207

Client	<b>Burleigh Heads Estate Pty Ltd</b>
Project	<b>SERVICE LOCATION SKETCH PLAN</b>
	<b>LOT 21</b> on SP316142
	<b>Stage 1B, The Arbour Burleigh Cowell Drive, Burleigh Heads</b>

Locality	BURLEIGH HEADS	Issue Date	21/03/2023
Local Govt	GOLD COAST CITY COUNCIL	Meridian	SP316142
		Level Datum	AHD
Scale (on A4 original)	1:300	Drawn	S. Holt
		Date Drafted	14/03/2023
		Checked	T. Geraghty

**Real Property Description:**  
Lot 21 on SP316142

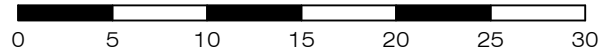
REFERENCE No. **5967-1B**  
PLAN No. **5967 S SK LOT 21**



**LEGEND**

- SEWER MANHOLE
- STORMWATER MANHOLE/ MAINTENANCE SHAFT
- GULLY TRAP
- FIELD INLET
- WATER METER
- FIRE HYDRANT
- STORMWATER SWALE
- WATER PIPE
- SEWER
- + 3.44 SURFACE LEVEL
- IL INVERT LEVEL
- SL SURFACE LEVEL
- DRIVEWAY / FOOTPATH
- KERB & CHANNEL
- ROOFWATER DRAINAGE PIPE
- ROOFWATER KERB ADAPTOR
- ROOFWATER KERB ADAPTOR WITH CONNECTION TO LOT

Scale 1:400 - Lengths are in Metres.



**gassman  
development  
perspectives**

planning | environment | landscape | engineering | survey

T: 3807 3333 | F: 3287 5461 | [www.gassman.com.au](http://www.gassman.com.au)

Gold Coast & Logan | 176 Business Street, Yatala QLD | PO Box 392, Beerleigh 4207

**Client**  
Burleigh Heads Estate Pty Ltd

**Project** **SERVICE LOCATION SKETCH PLAN**

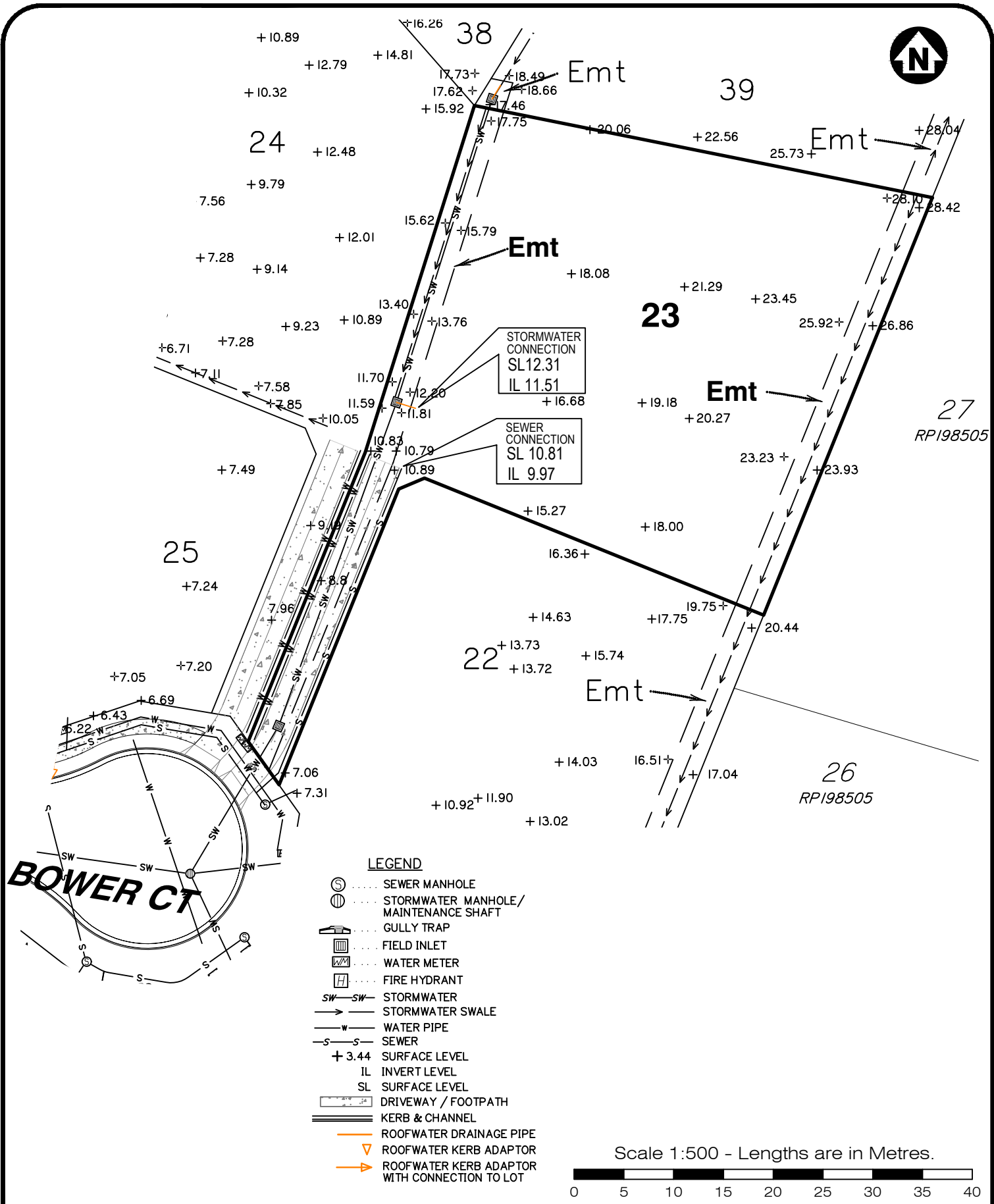
**LOT 22** on SP316142

**Stage 1B, The Arbour Burleigh  
Cowell Drive, Burleigh Heads**

Locality	BURLEIGH HEADS	Issue Date	21/03/2023
Local Govt	GOLD COAST CITY COUNCIL	Meridian	SP316142
Scale (on A4 original)	1:400	Level Datum	AHD
		Drawn	S. Holt
		Date Drafted	14/03/2023
		Checked	T. Geraghty

**Real Property Description:**  
Lot 22 on SP316142

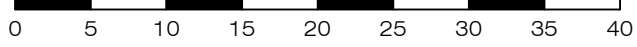
**REFERENCE No.** 5967-1B  
**PLAN No.** 5967 S SK LOT 22



**LEGEND**

- SEWER MANHOLE
- STORMWATER MANHOLE/ MAINTENANCE SHAFT
- GULLY TRAP
- FIELD INLET
- WATER METER
- FIRE HYDRANT
- STORMWATER
- STORMWATER SWALE
- WATER PIPE
- SEWER
- + 3.44 SURFACE LEVEL
- IL INVERT LEVEL
- SL SURFACE LEVEL
- DRIVEWAY / FOOTPATH
- KERB & CHANNEL
- ROOFWATER DRAINAGE PIPE
- ROOFWATER KERB ADAPTOR
- ROOFWATER KERB ADAPTOR WITH CONNECTION TO LOT

Scale 1:500 - Lengths are in Metres.



**gassman development perspectives**  
 est 1985  
 planning | environment | landscape | engineering | survey  
 T: 3807 3333 | F: 3287 5461 | www.gassman.com.au  
 Gold Coast & Logan | 176 Business Street, Yatala QLD | PO Box 392, Beenleigh 4207

**Client**  
 Burleigh Heads Estate Pty Ltd

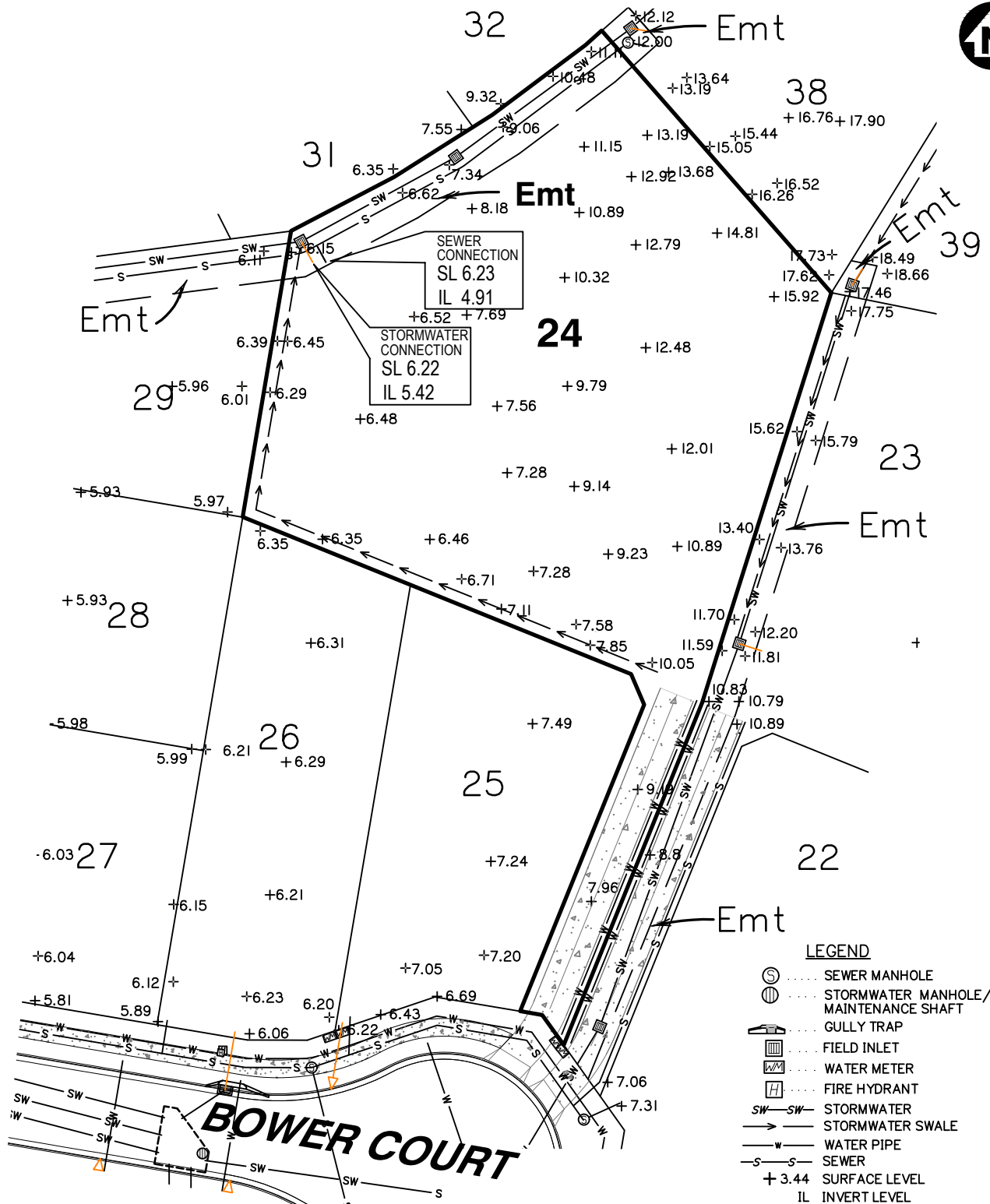
**Project** **SERVICE LOCATION SKETCH PLAN**  
 LOT 23 on SP316142  
 Stage 1B, The Arbour Burleigh  
 Cowell Drive, Burleigh Heads

**Locality** BURLEIGH HEADS  
**Local Govt** GOLD COAST CITY COUNCIL  
**Scale (on A4 original)**  
 1:500

**Issue Date** 21/03/2023  
**Meridian** SP316142  
**Level Datum** AHD  
**Drawn** S. Holt  
**Date Drafted** 14/03/2023  
**Checked** T. Geraghty

**Real Property Description:**  
 Lot 23 on SP316142

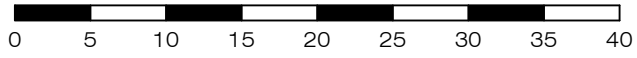
**REFERENCE No.** 5967-1B  
**PLAN No.** 5967 S SK LOT 23



**LEGEND**

- SEWER MANHOLE
- STORMWATER MANHOLE/ MAINTENANCE SHAFT
- GULLY TRAP
- FIELD INLET
- WATER METER
- FIRE HYDRANT
- SW-SW STORMWATER
- STORMWATER SWALE
- W-W WATER PIPE
- S-S SEWER
- + 3.44 SURFACE LEVEL
- IL INVERT LEVEL
- SL SURFACE LEVEL
- DRIVEWAY / FOOTPATH
- KERB & CHANNEL
- ROOFWATER DRAINAGE PIPE
- ROOFWATER KERB ADAPTOR
- ROOFWATER KERB ADAPTOR WITH CONNECTION TO LOT

Scale 1:500 - Lengths are in Metres.



gassman  
development  
perspectives

est 1985

planning | environment | landscape | engineering | survey

T: 3807 3333 | F: 3287 5461 | www.gassman.com.au

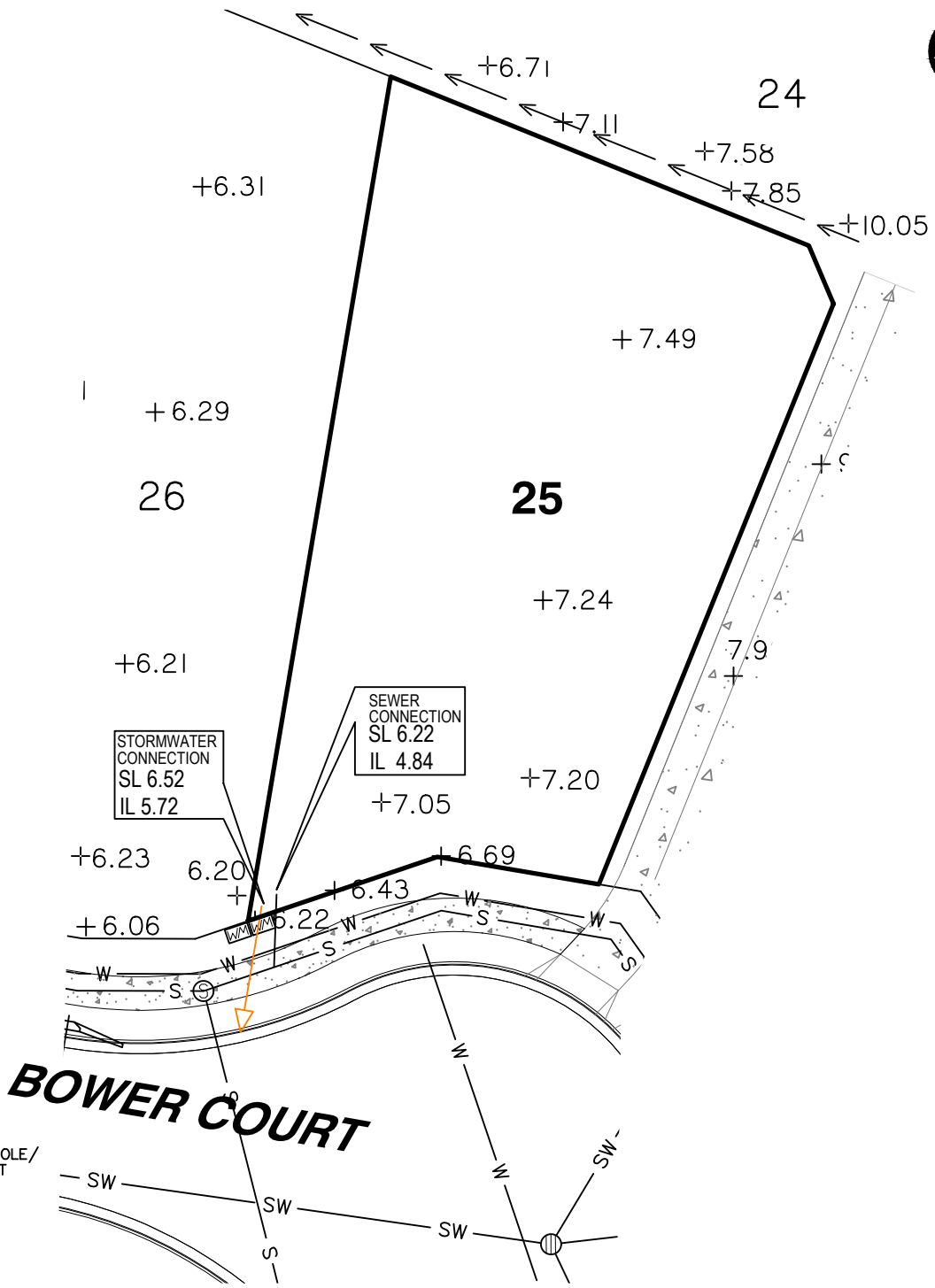
Gold Coast & Logan | 76 Business Street, Yatala QLD | PO Box 392, Beenleigh 4207

Client	Burleigh Heads Estate Pty Ltd
Project	<b>SERVICE LOCATION SKETCH PLAN</b>
	LOT 24 on SP316142
	Stage 1B, The Arbour Burleigh Cowell Drive, Burleigh Heads
Real Property Description:	Lot 24 on SP316142

Locality	BURLEIGH HEADS	Issue Date	21/03/2023
Local Govt	GOLD COAST CITY COUNCIL	Meridian	SP316142
		Level Datum	AHD
Scale (on A4 original)	1:500	Drawn	S. Holt
		Date Drafted	14/03/2023
		Checked	T. Geraghty

REFERENCE No. **5967-1B**  
**PLAN No. 5967 S SK LOT 24**

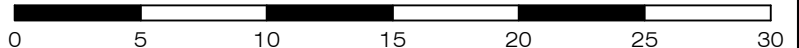




**LEGEND**

- SEWER MANHOLE
- STORMWATER MANHOLE/ MAINTENANCE SHAFT
- GULLY TRAP
- FIELD INLET
- WATER METER
- FIRE HYDRANT
- SW-SW** STORMWATER
- STORMWATER SWALE
- WATER PIPE
- SEWER
- + 3.44** SURFACE LEVEL
- IL** INVERT LEVEL
- SL** SURFACE LEVEL
- DRIVEWAY / FOOTPATH
- KERB & CHANNEL
- ROOFWATER DRAINAGE PIPE
- ROOFWATER KERB ADAPTOR
- ROOFWATER KERB ADAPTOR WITH CONNECTION TO LOT

Scale 1:300 - Lengths are in Metres.



**gassman  
development  
perspectives**

planning | environment | landscape | engineering | survey

T: 3807 3333 | F: 3287 5461 | [www.gassman.com.au](http://www.gassman.com.au)

Gold Coast & Logan | 176 Business Street, Yatala QLD | PO Box 392, Beenleigh 4207

**Client**  
Burleigh Heads Estate Pty Ltd

**Project** **SERVICE LOCATION SKETCH PLAN**

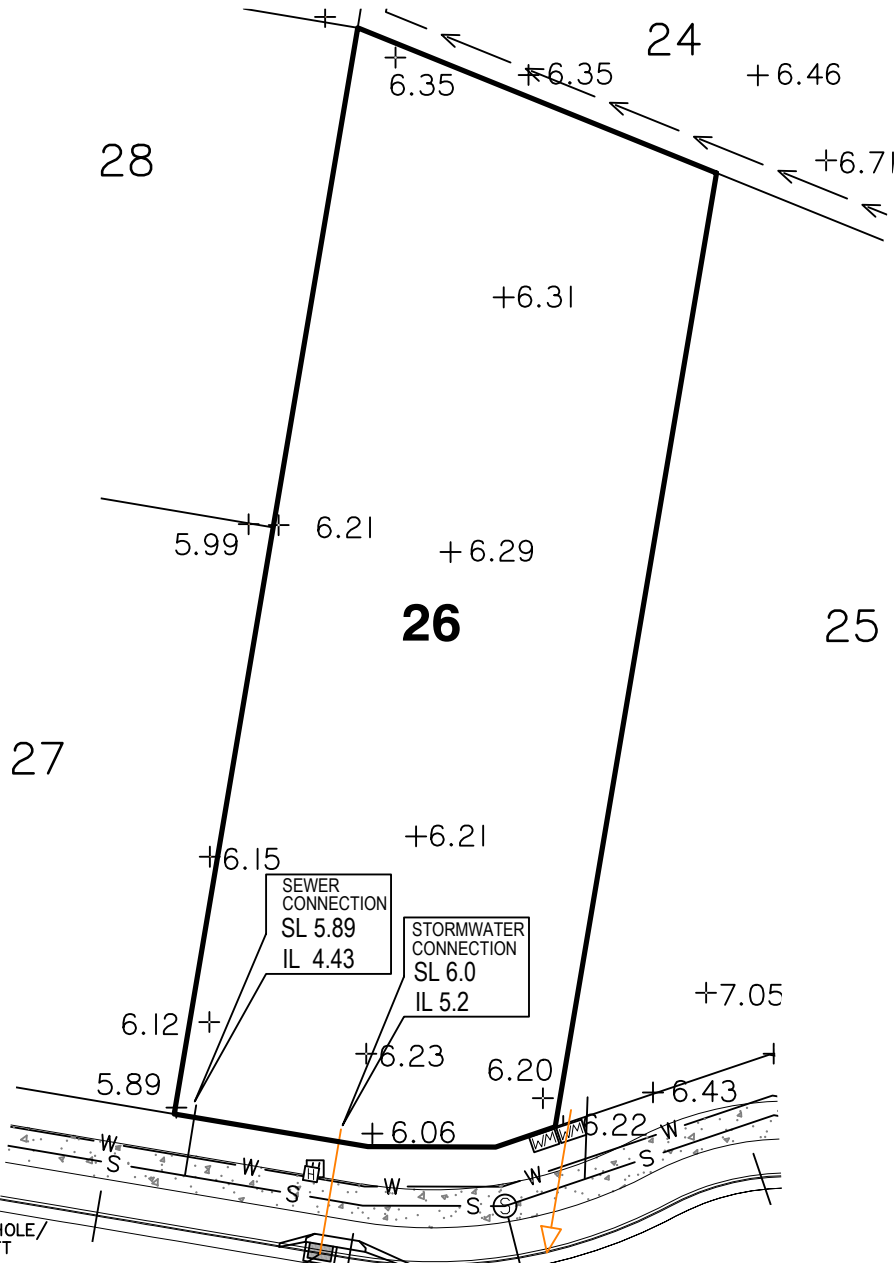
**LOT 25** on SP316142

**Stage 1B, The Arbour Burleigh  
Cowell Drive, Burleigh Heads**

Locality	BURLEIGH HEADS	Issue Date	21/03/2023
Local Govt	GOLD COAST CITY COUNCIL	Meridian	SP316142
Scale (on A4 original)	1:300	Level Datum	AHD
		Drawn	S. Holt
		Date Drafted	14/03/2023
		Checked	T. Geraghty

**Real Property Description:**  
Lot 25 on SP316142

**REFERENCE No.** 5967-1B  
**PLAN No.** 5967 S SK LOT 25

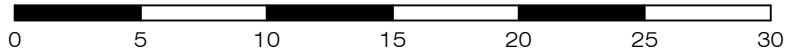


**LEGEND**

- ⊙ ..... SEWER MANHOLE
- ⊕ ..... STORMWATER MANHOLE/  
MAINTENANCE SHAFT
- ⌒ ..... GULLY TRAP
- ⊠ ..... FIELD INLET
- ⊞ ..... WATER METER
- ⊞ ..... FIRE HYDRANT
- SW-SW ..... STORMWATER
- ..... STORMWATER SWALE
- W— ..... WATER PIPE
- S— ..... SEWER
- + 3.44 ..... SURFACE LEVEL
- IL ..... INVERT LEVEL
- SL ..... SURFACE LEVEL
- ▭ ..... DRIVEWAY / FOOTPATH
- ▬ ..... KERB & CHANNEL
- ..... ROOFWATER DRAINAGE PIPE
- ▽ ..... ROOFWATER KERB ADAPTOR
- ▷ ..... ROOFWATER KERB ADAPTOR  
WITH CONNECTION TO LOT

**BOWER COURT**

Scale 1:300 - Lengths are in Metres.



**gassman  
development  
perspectives**

planning | environment | landscape | engineering | survey

T: 3807 3333 | F: 3287 5461 | www.gassman.com.au

Gold Coast & Logan | 176 Business Street, Yatala QLD | PO Box 392, Beenleigh 4207

**Client**  
Burleigh Heads Estate Pty Ltd

**Project** **SERVICE LOCATION SKETCH PLAN**

**LOT 26** on SP316142

**Stage 1B, The Arbour Burleigh  
Cowell Drive, Burleigh Heads**

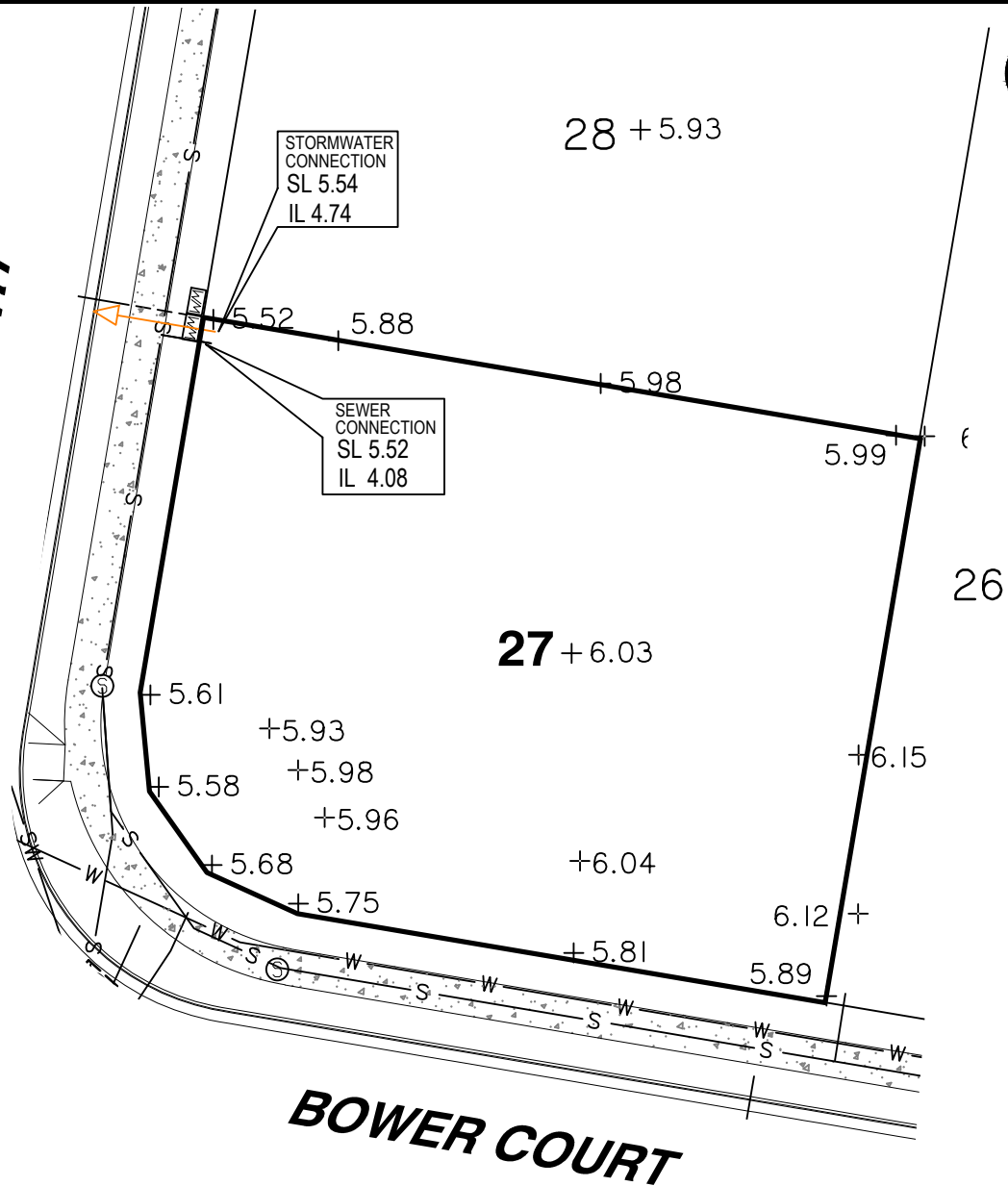
Locality	BURLEIGH HEADS	Issue Date	21/03/2023
Local Govt	GOLD COAST CITY COUNCIL	Meridian	SP316142
Scale (on A4 original)	1:300	Level Datum	AHD
		Drawn	S. Holt
		Date Drafted	14/03/2023
		Checked	T. Geraghty

**Real Property Description:**  
Lot 26 on SP316142

**REFERENCE No.** 5967-1B  
**PLAN No.** 5967 S SK LOT 26



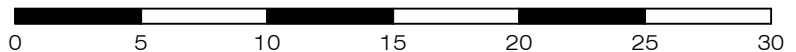
**BOWER COURT**



**LEGEND**

- SEWER MANHOLE
- STORMWATER MANHOLE/ MAINTENANCE SHAFT
- GULLY TRAP
- FIELD INLET
- WATER METER
- FIRE HYDRANT
- STORMWATER
- STORMWATER SWALE
- WATER PIPE
- SEWER
- + 3.44 SURFACE LEVEL
- IL INVERT LEVEL
- SL SURFACE LEVEL
- DRIVEWAY / FOOTPATH
- KERB & CHANNEL
- ROOFWATER DRAINAGE PIPE
- ROOFWATER KERB ADAPTOR
- ROOFWATER KERB ADAPTOR WITH CONNECTION TO LOT

Scale 1:300 - Lengths are in Metres.



**gassman  
development  
perspectives**

planning | environment | landscape | engineering | survey

T: 3807 3333 | F: 3287 5461 | www.gassman.com.au

Gold Coast & Logan | 76 Business Street, Yatala QLD | PO Box 392, Beenleigh 4207

**Client**  
Burleigh Heads Estate Pty Ltd

**Project** **SERVICE LOCATION SKETCH PLAN**

**LOT 27** on SP316142

**Stage 1B, The Arbour Burleigh  
Cowell Drive, Burleigh Heads**

Locality BURLEIGH HEADS  
Local Govt GOLD COAST CITY COUNCIL

Issue Date 21/03/2023  
Meridian SP316142  
Level Datum AHD  
Drawn S. Holt  
Date Drafted 14/03/2023  
Checked T. Geraghty

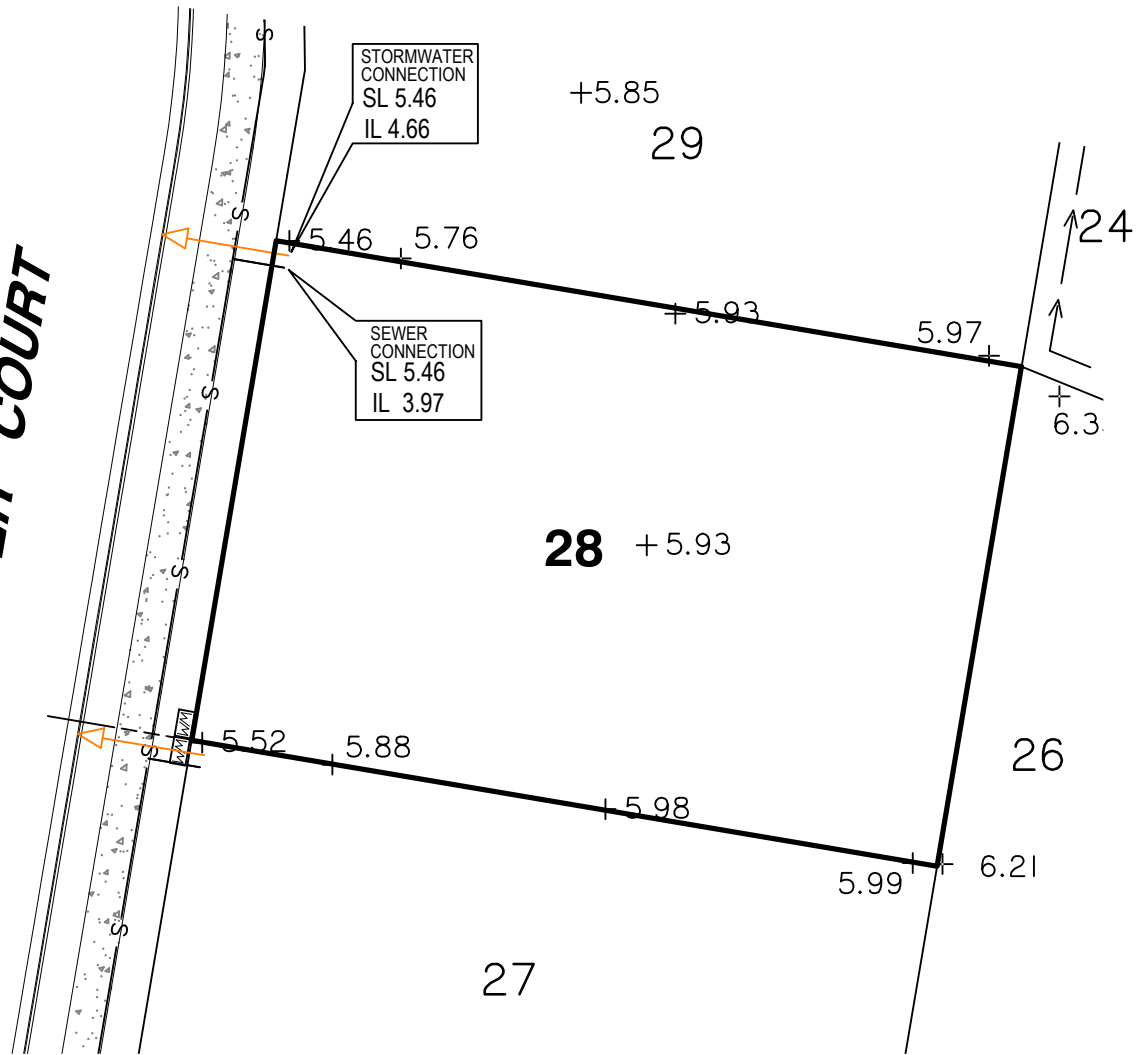
Scale (on A4 original)  
**1:300**

**Real Property Description:**  
Lot 27 on SP316142

REFERENCE No. **5967-1B**  
PLAN No. **5967 S SK LOT 27**



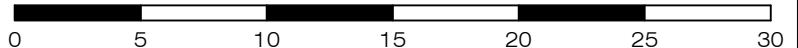
**BOWER COURT**



**LEGEND**

- ⊙ ..... SEWER MANHOLE
- ⊕ ..... STORMWATER MANHOLE/  
MAINTENANCE SHAFT
- ⌒ ..... GULLY TRAP
- ⊞ ..... FIELD INLET
- ⊞ ..... WATER METER
- ⊞ ..... FIRE HYDRANT
- SW-SW ..... STORMWATER
- ..... STORMWATER SWALE
- w- ..... WATER PIPE
- s-s- ..... SEWER
- + 3.44 SURFACE LEVEL
- IL INVERT LEVEL
- SL SURFACE LEVEL
- ⊞ ..... DRIVEWAY / FOOTPATH
- ===== KEROB & CHANNEL
- Roofwater Drainage Pipe
- ▽ Roofwater Kerb Adaptor
- Roofwater Kerb Adaptor with Connection to Lot

Scale 1:300 - Lengths are in Metres.



**gassman  
development  
perspectives**  
estd 1985

planning | environment | landscape | engineering | survey

T: 3807 3333 | F: 3287 5461 | www.gassman.com.au

Gold Coast & Logan | 76 Business Street, Yatala QLD | PO Box 392, Beenleigh 4207

Client	<b>Burleigh Heads Estate Pty Ltd</b>
Project	<b>SERVICE LOCATION SKETCH PLAN</b>
	<b>LOT 28</b> on SP316142
	<b>Stage 1B, The Arbour Burleigh Cowell Drive, Burleigh Heads</b>






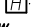
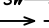
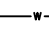
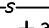









Locality	BURLEIGH HEADS	Issue Date	21/03/2023
Local Govt	GOLD COAST CITY COUNCIL	Meridian	SP316142
		Level Datum	AHD
Scale (on A4 original)	1:300	Drawn	S. Holt
		Date Drafted	14/03/2023
		Checked	T. Geraghty

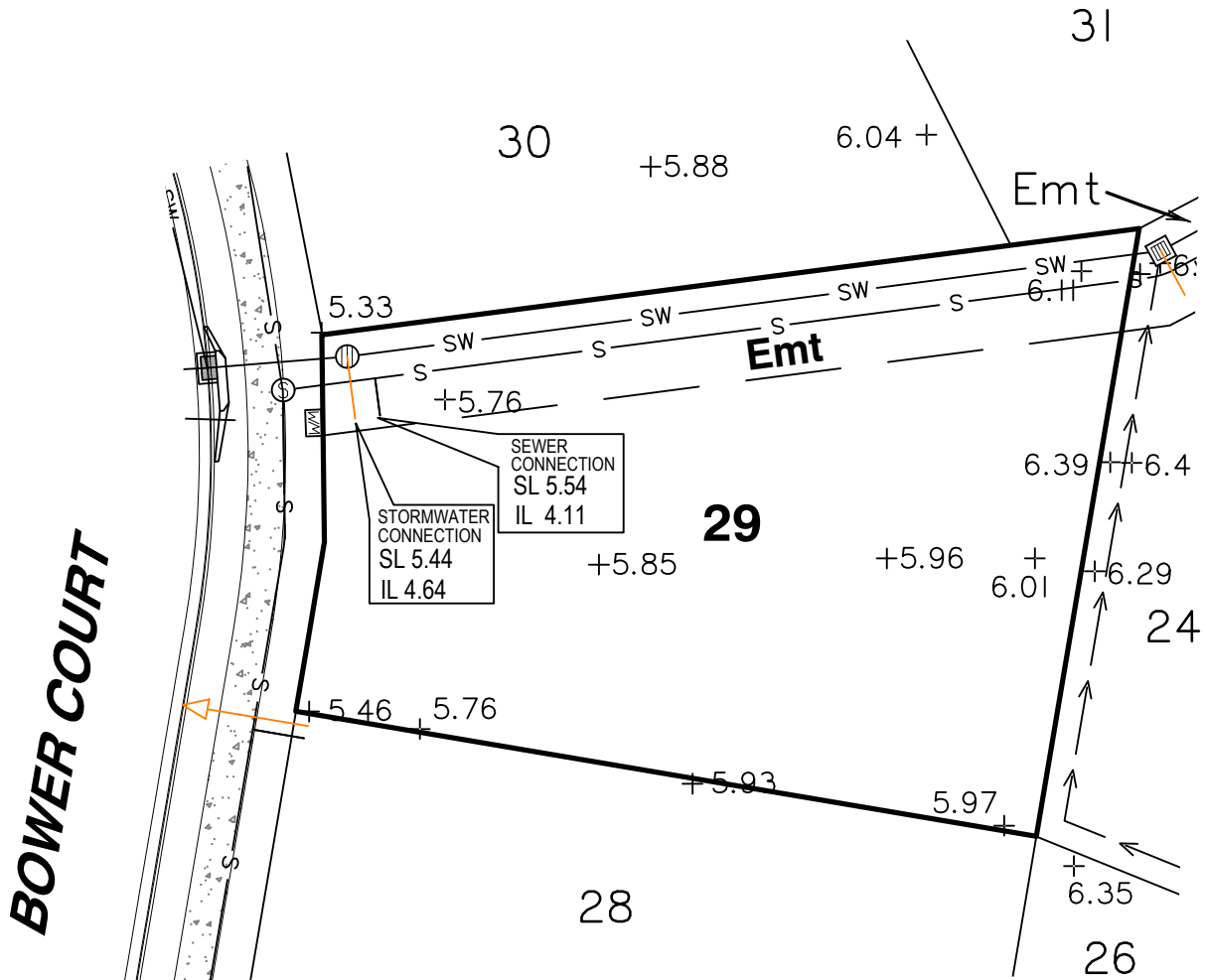
**Real Property Description:**  
Lot 28 on SP316142

REFERENCE No. **5967-1B**  
PLAN No. **5967 S SK LOT 28**

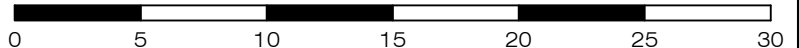


**LEGEND**

-  SEWER MANHOLE
-  STORMWATER MANHOLE/ MAINTENANCE SHAFT
-  GULLY TRAP
-  FIELD INLET
-  WATER METER
-  FIRE HYDRANT
-  STORMWATER
-  STORMWATER SWALE
-  WATER PIPE
-  SEWER
-  + 3.44 SURFACE LEVEL
-  IL INVERT LEVEL
-  SL SURFACE LEVEL
-  DRIVEWAY / FOOTPATH
-  KERB & CHANNEL
-  ROOFWATER DRAINAGE PIPE
-  ROOFWATER KERB ADAPTOR
-  ROOFWATER KERB ADAPTOR WITH CONNECTION TO LOT



Scale 1:300 - Lengths are in Metres.



planning | environment | landscape | engineering | survey

T: 3807 3333 | F: 3287 5461 | www.gassman.com.au

Gold Coast & Logan | 76 Business Street, Yatala QLD | PO Box 392, Beenleigh 4207

**Client**  
Burleigh Heads Estate Pty Ltd

**Project** **SERVICE LOCATION SKETCH PLAN**

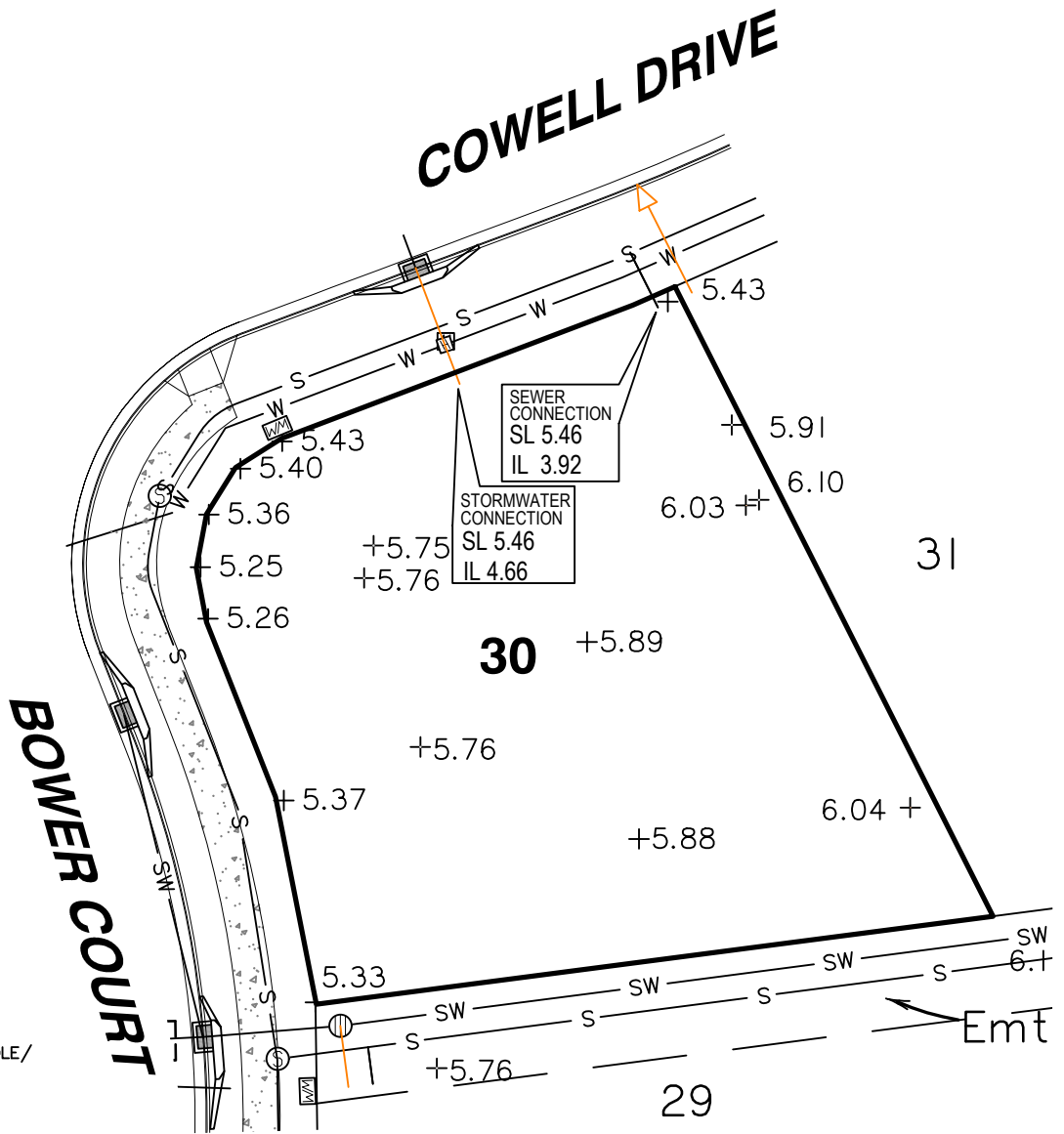
**LOT 29** on SP316142

**Stage 1B, The Arbour Burleigh**  
**Cowell Drive, Burleigh Heads**

Locality	BURLEIGH HEADS	Issue Date	21/03/2023
Local Govt	GOLD COAST CITY COUNCIL	Meridian	SP316142
Scale (on A4 original)	1:300	Level Datum	AHD
		Drawn	S. Holt
		Date Drafted	14/03/2023
		Checked	T. Geraghty

**Real Property Description:**  
Lot 29 on SP316142

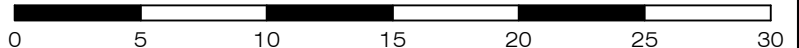
**REFERENCE No. 5967-1B**  
**PLAN No. 5967 S SK LOT 29**



**LEGEND**

- SEWER MANHOLE
- STORMWATER MANHOLE/ MAINTENANCE SHAFT
- GULLY TRAP
- FIELD INLET
- WATER METER
- FIRE HYDRANT
- STORMWATER
- STORMWATER SWALE
- WATER PIPE
- SEWER
- + 3.44 SURFACE LEVEL
- IL INVERT LEVEL
- SL SURFACE LEVEL
- DRIVEWAY / FOOTPATH
- KERB & CHANNEL
- ROOFWATER DRAINAGE PIPE
- ROOFWATER KERB ADAPTOR
- ROOFWATER KERB ADAPTOR WITH CONNECTION TO LOT

Scale 1:300 - Lengths are in Metres.



**gassman  
development  
perspectives**

planning | environment | landscape | engineering | survey

T: 3807 3333 | F: 3287 5461 | [www.gassman.com.au](http://www.gassman.com.au)

Gold Coast & Logan | 176 Business Street, Yatala QLD | PO Box 392, Beenleigh 4207

**Client**  
Burleigh Heads Estate Pty Ltd

**Project** **SERVICE LOCATION SKETCH PLAN**

**LOT 30** on SP316142

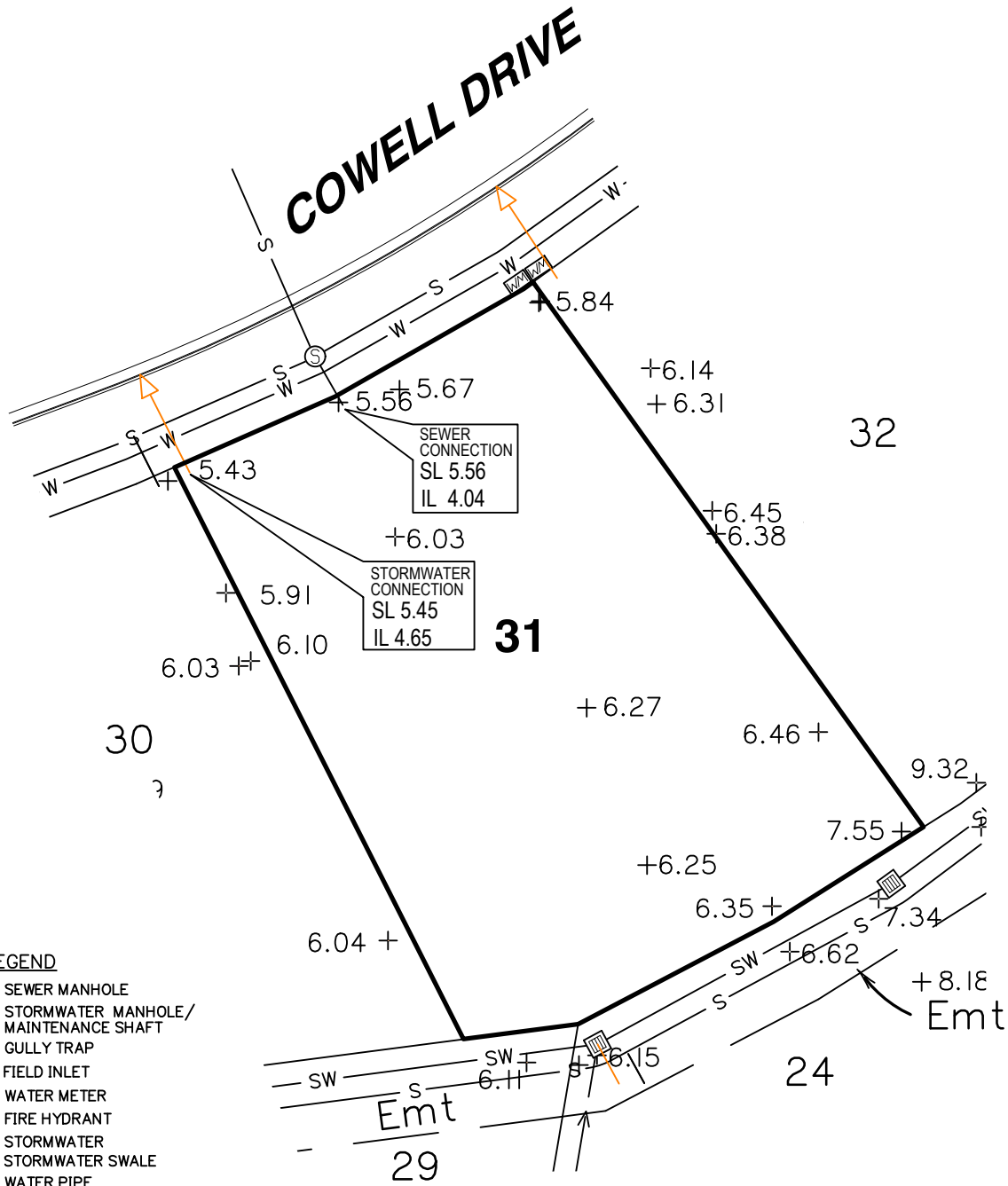
**Stage 1B, The Arbour Burleigh  
Cowell Drive, Burleigh Heads**

Locality	BURLEIGH HEADS	Issue Date	21/03/2023
Local Govt	GOLD COAST CITY COUNCIL	Meridian	SP316142
		Level Datum	AHD
Scale (on A4 original)	1:300	Drawn	S. Holt
		Date Drafted	14/03/2023
		Checked	T. Geraghty

**Real Property Description:**  
Lot 30 on SP316142

REFERENCE No. **5967-1B**

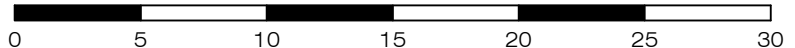
PLAN No. **5967 S SK LOT 30**



**LEGEND**

- ⊙ ..... SEWER MANHOLE
- ⊕ ..... STORMWATER MANHOLE/  
MAINTENANCE SHAFT
- ⌂ ..... GULLY TRAP
- ⊞ ..... FIELD INLET
- ⊞ ..... WATER METER
- ⊞ ..... FIRE HYDRANT
- SW-SW ..... STORMWATER
- ..... STORMWATER SWALE
- w ..... WATER PIPE
- s ..... SEWER
- + 3.44 ..... SURFACE LEVEL
- IL ..... INVERT LEVEL
- SL ..... SURFACE LEVEL
- ▭ ..... DRIVEWAY / FOOTPATH
- ▬▬▬ ..... KERB & CHANNEL
- ..... ROOFWATER DRAINAGE PIPE
- ▽ ..... ROOFWATER KERB ADAPTOR
- ..... ROOFWATER KERB ADAPTOR  
WITH CONNECTION TO LOT

Scale 1:300 - Lengths are in Metres.



**gassman  
development  
perspectives**  
estd 1985

planning | environment | landscape | engineering | survey

T: 3807 3333 | F: 3287 5461 | [www.gassman.com.au](http://www.gassman.com.au)

Gold Coast & Logan | 176 Business Street, Yatala QLD | PO Box 392, Beenleigh 4207

Client	<b>Burleigh Heads Estate Pty Ltd</b>
Project	<b>SERVICE LOCATION SKETCH PLAN</b>
	<b>LOT 31</b> on SP316142
	<b>Stage 1B, The Arbour Burleigh Cowell Drive, Burleigh Heads</b>

Locality	BURLEIGH HEADS	Issue Date	21/03/2023
Local Govt	GOLD COAST CITY COUNCIL	Meridian	SP316142
		Level Datum	AHD
Scale (on A4 original)	1:300	Drawn	S. Holt
		Date Drafted	14/03/2023
		Checked	T. Geraghty

**Real Property Description:**  
Lot 31 on SP316142

REFERENCE No. **5967-1B**  
PLAN No. **5967 S SK LOT 31**