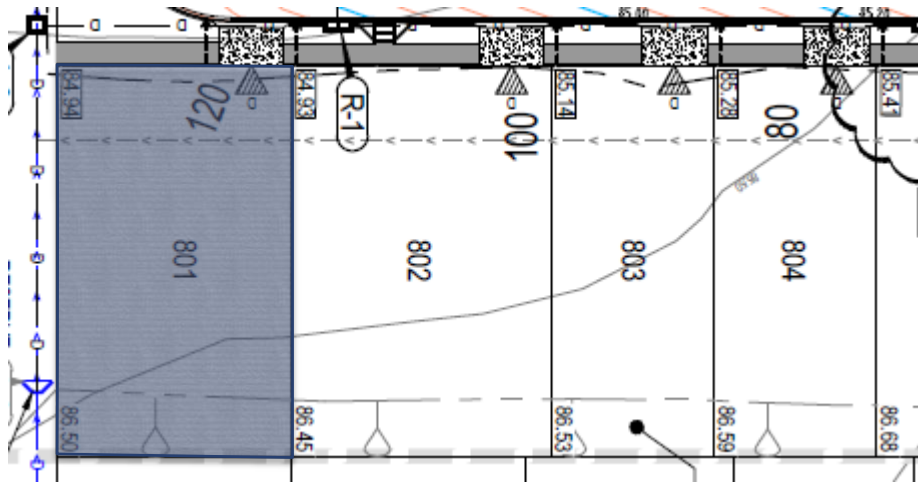


Controlled Fill Certificate



Certificate of Controlled Filling
Earthworks Operations (AS3798 – Level 1 Inspection & Testing)
AGTE250326, William Lakes Stage 8A
Lot 801



 Level 1 Site Area

The filling in the areas as defined above and in the Level 1 Report pertaining to the above mentioned project meets the requirements for “structural fill for residential applications” in accordance with AS3798. The fill has been placed, compacted and tested in accordance with AS3798 and the fill meets the requirements for controlled fill in accordance with AS2870 (2011) “Residential Slabs and Footings”.

A handwritten signature in black ink, appearing to read 'Martin Williams', is written over a light blue circular background.

Martin Williams
Principal Geotechnical Engineer
MSc CGeol CPEng RPEQ RPEV
martinW@ausgeotest.com.au
Tel: 0484 862 371

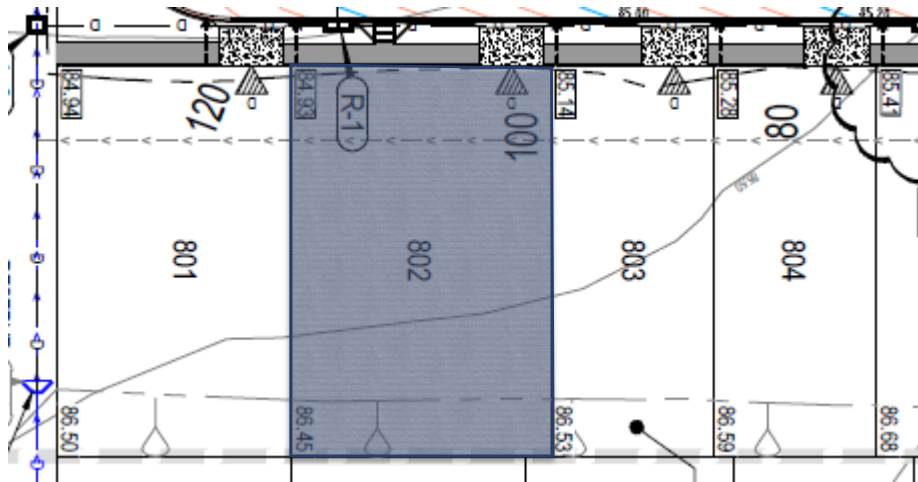


Document No: AGT.REP.307

Controlled Fill Certificate



Certificate of Controlled Filling
Earthworks Operations (AS3798 – Level 1 Inspection & Testing)
AGTE250326, William Lakes Stage 8A
Lot 802



 Level 1 Site Area

The filling in the areas as defined above and in the Level 1 Report pertaining to the above mentioned project meets the requirements for “structural fill for residential applications” in accordance with AS3798. The fill has been placed, compacted and tested in accordance with AS3798 and the fill meets the requirements for controlled fill in accordance with AS2870 (2011) “Residential Slabs and Footings”.

A handwritten signature in black ink, appearing to read 'Martin Williams', is written over a light blue circular background.

Martin Williams
Principal Geotechnical Engineer
MSc CGeol CPEng RPEQ RPEV
martinW@ausgeotest.com.au
Tel: 0484 862 371

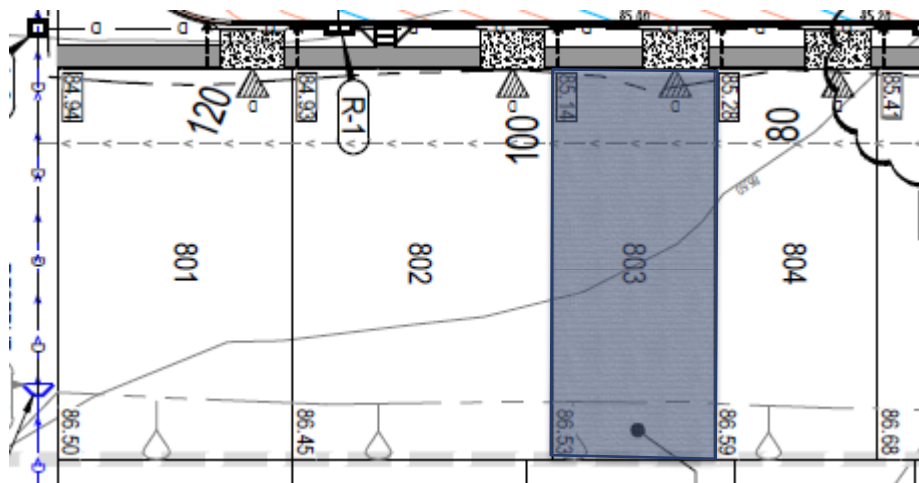


Document No: AGT.REP.307

Controlled Fill Certificate



Certificate of Controlled Filling
Earthworks Operations (AS3798 – Level 1 Inspection & Testing)
AGTE250326, William Lakes Stage 8A
Lot 803



 Level 1 Site Area

The filling in the areas as defined above and in the Level 1 Report pertaining to the above mentioned project meets the requirements for “structural fill for residential applications” in accordance with AS3798. The fill has been placed, compacted and tested in accordance with AS3798 and the fill meets the requirements for controlled fill in accordance with AS2870 (2011) “Residential Slabs and Footings”.

A handwritten signature in black ink, appearing to read 'Martin Williams'.

Martin Williams
Principal Geotechnical Engineer
MSc CGeol CPEng RPEQ RPEV
martinW@ausgeotest.com.au
Tel: 0484 862 371

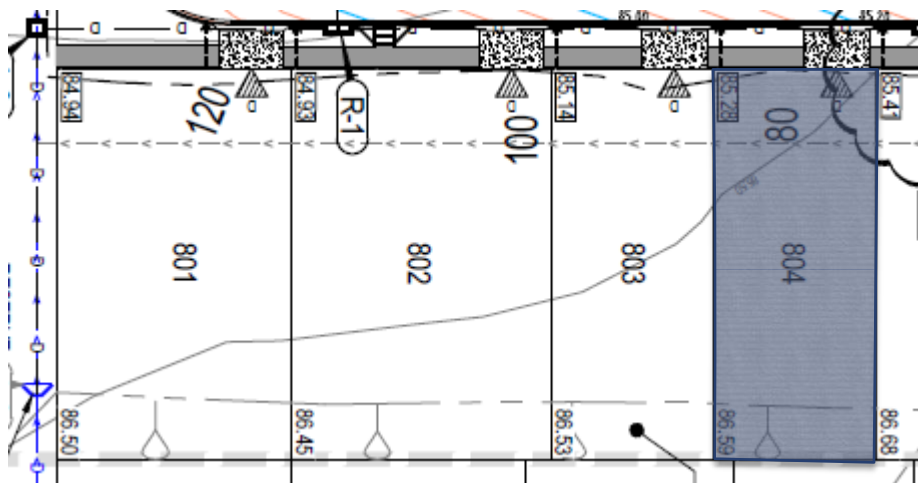


Document No: AGT.REP.307

Controlled Fill Certificate



Certificate of Controlled Filling
Earthworks Operations (AS3798 – Level 1 Inspection & Testing)
AGTE250326, William Lakes Stage 8A
Lot 804



 Level 1 Site Area

The filling in the areas as defined above and in the Level 1 Report pertaining to the above mentioned project meets the requirements for “structural fill for residential applications” in accordance with AS3798. The fill has been placed, compacted and tested in accordance with AS3798 and the fill meets the requirements for controlled fill in accordance with AS2870 (2011) “Residential Slabs and Footings”.

A handwritten signature in black ink, appearing to read 'Martin Williams', is written over a light blue circular background.

Martin Williams
Principal Geotechnical Engineer
MSc CGeol CPEng RPEQ RPEV
martinW@ausgeotest.com.au
Tel: 0484 862 371

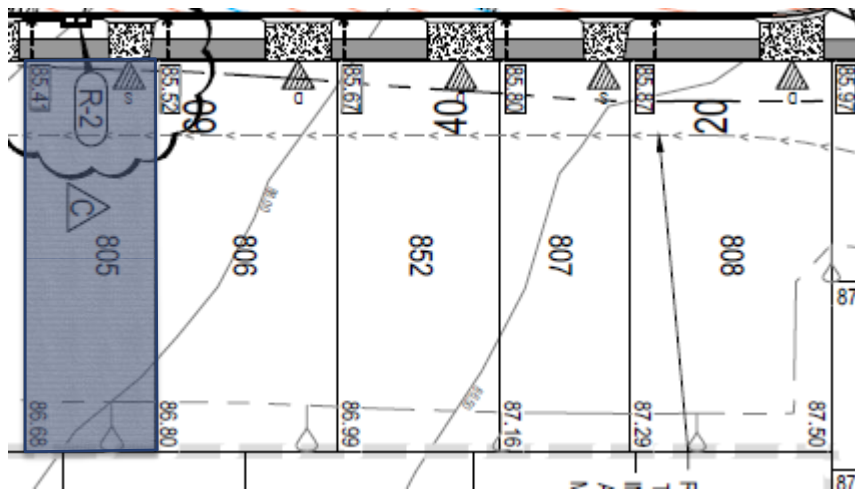


Document No: AGT.REP.307

Controlled Fill Certificate



Certificate of Controlled Filling
Earthworks Operations (AS3798 – Level 1 Inspection & Testing)
AGTE250326, William Lakes Stage 8A
Lot 805



 Level 1 Site Area

The filling in the areas as defined above and in the Level 1 Report pertaining to the above mentioned project meets the requirements for “structural fill for residential applications” in accordance with AS3798. The fill has been placed, compacted and tested in accordance with AS3798 and the fill meets the requirements for controlled fill in accordance with AS2870 (2011) “Residential Slabs and Footings”.

A handwritten signature in black ink, appearing to read 'Martin Williams', is written over a light blue circular stamp.

Martin Williams
Principal Geotechnical Engineer
MSc CGeol CPEng RPEQ RPEV
martinW@ausgeotest.com.au
Tel: 0484 862 371

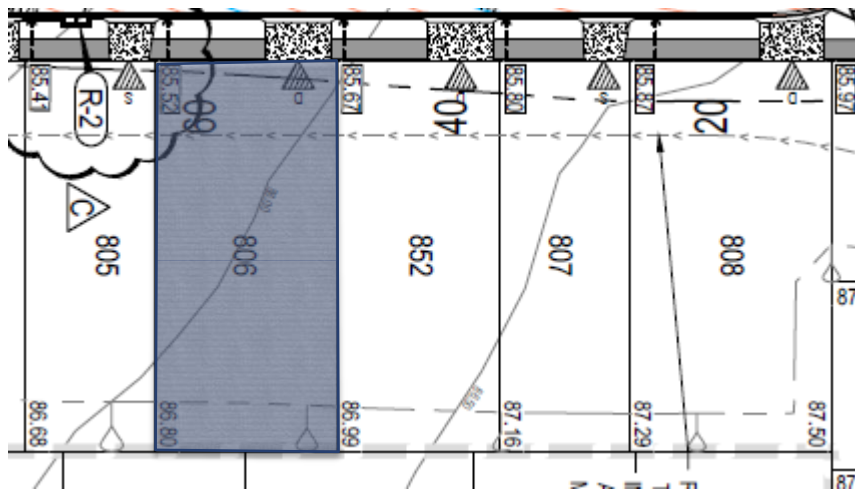


Document No: AGT.REP.307

Controlled Fill Certificate



Certificate of Controlled Filling
Earthworks Operations (AS3798 – Level 1 Inspection & Testing)
AGTE250326, William Lakes Stage 8A
Lot 806



 Level 1 Site Area

The filling in the areas as defined above and in the Level 1 Report pertaining to the above mentioned project meets the requirements for “structural fill for residential applications” in accordance with AS3798. The fill has been placed, compacted and tested in accordance with AS3798 and the fill meets the requirements for controlled fill in accordance with AS2870 (2011) “Residential Slabs and Footings”.

A handwritten signature in black ink, appearing to read 'Martin Williams', is positioned above the contact information.

Martin Williams
Principal Geotechnical Engineer
MSc CGeol CPEng RPEQ RPEV
martinW@ausgeotest.com.au
Tel: 0484 862 371

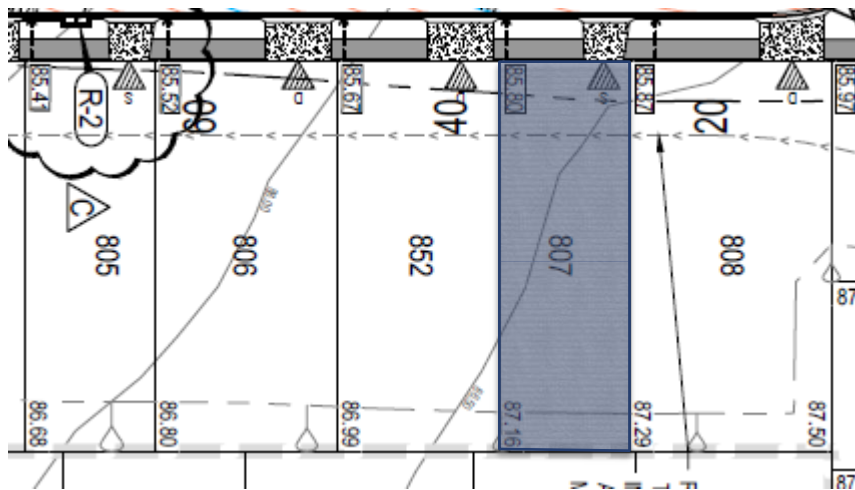


Document No: AGT.REP.307

Controlled Fill Certificate



Certificate of Controlled Filling
Earthworks Operations (AS3798 – Level 1 Inspection & Testing)
AGTE250326, William Lakes Stage 8A
Lot 807



 Level 1 Site Area

The filling in the areas as defined above and in the Level 1 Report pertaining to the above mentioned project meets the requirements for “structural fill for residential applications” in accordance with AS3798. The fill has been placed, compacted and tested in accordance with AS3798 and the fill meets the requirements for controlled fill in accordance with AS2870 (2011) “Residential Slabs and Footings”.

A handwritten signature in black ink, appearing to read 'Martin Williams', is written over a light blue circular background.

Martin Williams
Principal Geotechnical Engineer
MSc CGeol CPEng RPEQ RPEV
martinW@ausgeotest.com.au
Tel: 0484 862 371

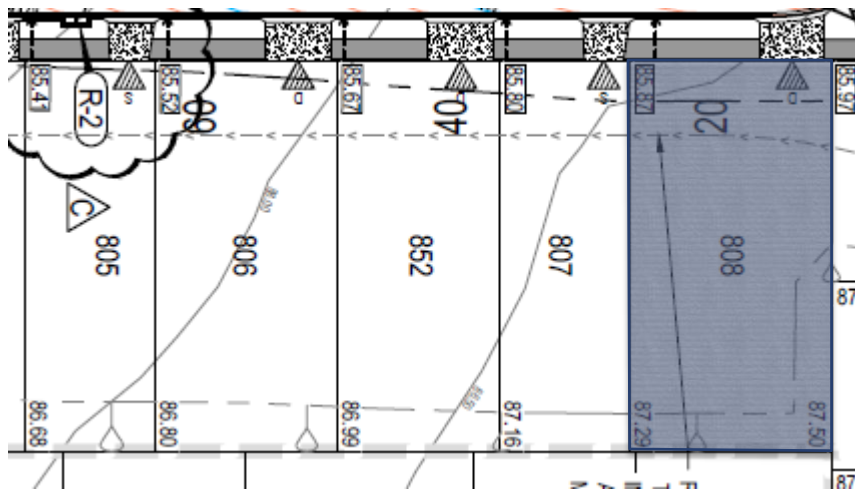



Document No: AGT.REP.307

Controlled Fill Certificate



Certificate of Controlled Filling
Earthworks Operations (AS3798 – Level 1 Inspection & Testing)
AGTE250326, William Lakes Stage 8A
Lot 808



 Level 1 Site Area

The filling in the areas as defined above and in the Level 1 Report pertaining to the above mentioned project meets the requirements for “structural fill for residential applications” in accordance with AS3798. The fill has been placed, compacted and tested in accordance with AS3798 and the fill meets the requirements for controlled fill in accordance with AS2870 (2011) “Residential Slabs and Footings”.

A handwritten signature in black ink, appearing to read 'Martin Williams', is written over a light blue circular stamp.

Martin Williams
Principal Geotechnical Engineer
MSc CGeol CPEng RPEQ RPEV
martinW@ausgeotest.com.au
Tel: 0484 862 371

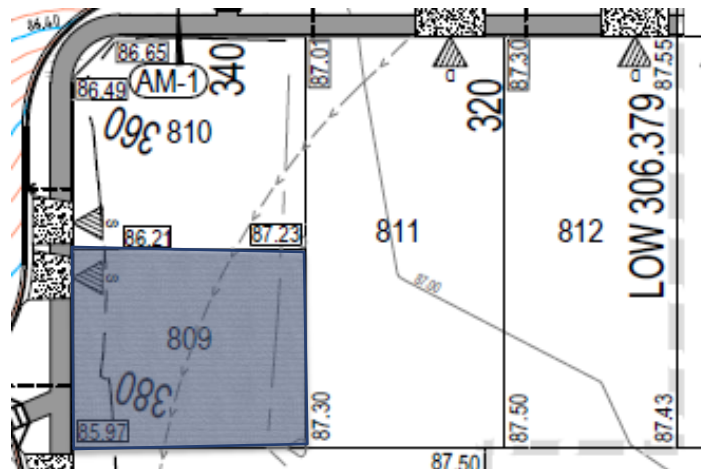


Document No: AGT.REP.307

Controlled Fill Certificate



Certificate of Controlled Filling
Earthworks Operations (AS3798 – Level 1 Inspection & Testing)
AGTE250326, William Lakes Stage 8A
Lot 809



 Level 1 Site Area

The filling in the areas as defined above and in the Level 1 Report pertaining to the above mentioned project meets the requirements for “structural fill for residential applications” in accordance with AS3798. The fill has been placed, compacted and tested in accordance with AS3798 and the fill meets the requirements for controlled fill in accordance with AS2870 (2011) “Residential Slabs and Footings”.

A handwritten signature in black ink, appearing to read 'Martin Williams', is written over a light blue circular background.

Martin Williams
Principal Geotechnical Engineer
MSc CGeol CPEng RPEQ RPEV
martinW@ausgeotest.com.au
Tel: 0484 862 371

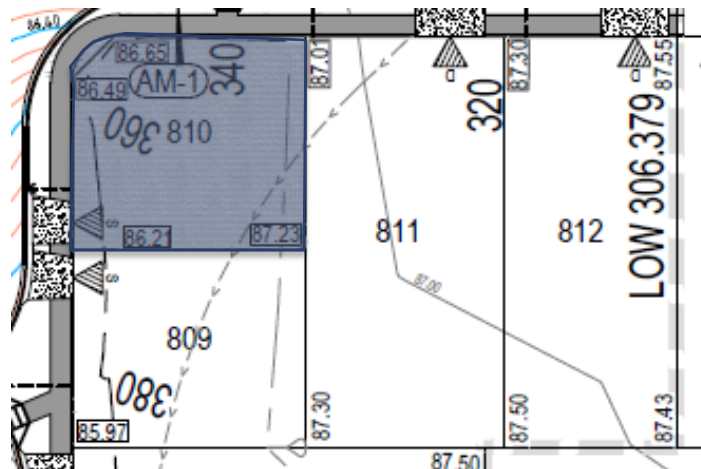



Document No: AGT.REP.307

Controlled Fill Certificate



Certificate of Controlled Filling
Earthworks Operations (AS3798 – Level 1 Inspection & Testing)
AGTE250326, William Lakes Stage 8A
Lot 810



 Level 1 Site Area

The filling in the areas as defined above and in the Level 1 Report pertaining to the above mentioned project meets the requirements for “structural fill for residential applications” in accordance with AS3798. The fill has been placed, compacted and tested in accordance with AS3798 and the fill meets the requirements for controlled fill in accordance with AS2870 (2011) “Residential Slabs and Footings”.

A handwritten signature in black ink, appearing to read 'Martin Williams', is positioned above the printed name and contact information.

Martin Williams
Principal Geotechnical Engineer
MSc CGeol CPEng RPEQ RPEV
martinW@ausgeotest.com.au
Tel: 0484 862 371

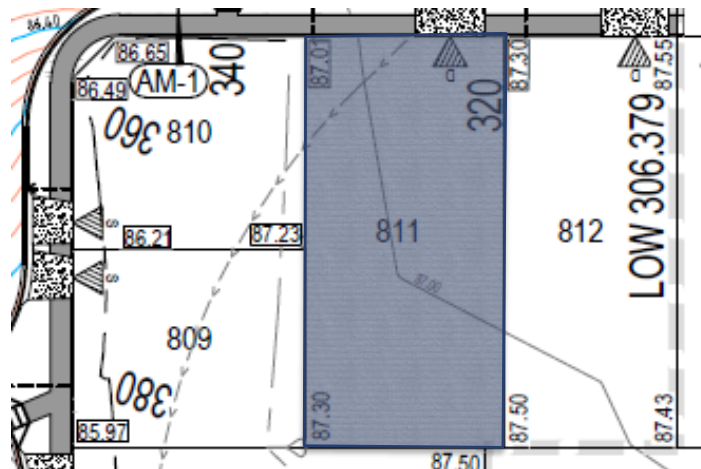


Document No: AGT.REP.307

Controlled Fill Certificate



Certificate of Controlled Filling
Earthworks Operations (AS3798 – Level 1 Inspection & Testing)
AGTE250326, William Lakes Stage 8A
Lot 811



 Level 1 Site Area

The filling in the areas as defined above and in the Level 1 Report pertaining to the above mentioned project meets the requirements for “structural fill for residential applications” in accordance with AS3798. The fill has been placed, compacted and tested in accordance with AS3798 and the fill meets the requirements for controlled fill in accordance with AS2870 (2011) “Residential Slabs and Footings”.

A handwritten signature in black ink, appearing to read 'Martin Williams', is positioned above the contact information.

Martin Williams
Principal Geotechnical Engineer
MSc CGeol CPEng RPEQ RPEV
martinW@ausgeotest.com.au
Tel: 0484 862 371

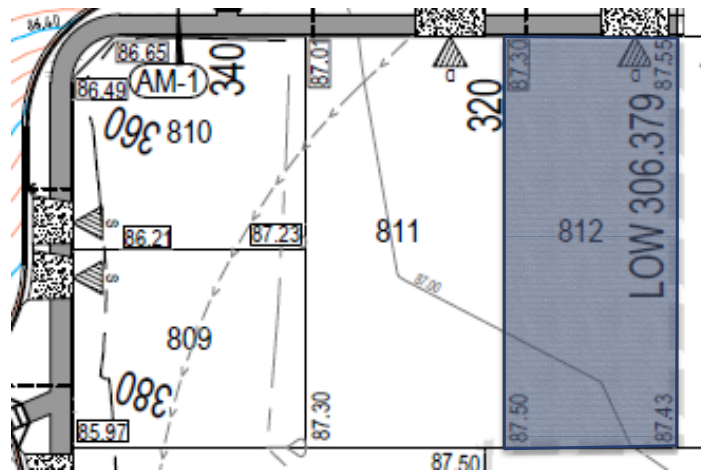


Document No: AGT.REP.307

Controlled Fill Certificate



Certificate of Controlled Filling
Earthworks Operations (AS3798 – Level 1 Inspection & Testing)
AGTE250326, William Lakes Stage 8A
Lot 812



 Level 1 Site Area

The filling in the areas as defined above and in the Level 1 Report pertaining to the above mentioned project meets the requirements for “structural fill for residential applications” in accordance with AS3798. The fill has been placed, compacted and tested in accordance with AS3798 and the fill meets the requirements for controlled fill in accordance with AS2870 (2011) “Residential Slabs and Footings”.

A handwritten signature in black ink, appearing to read 'Martin Williams', is written over a light blue circular background.

Martin Williams
Principal Geotechnical Engineer
MSc CGeol CPEng RPEQ RPEV
martinW@ausgeotest.com.au
Tel: 0484 862 371

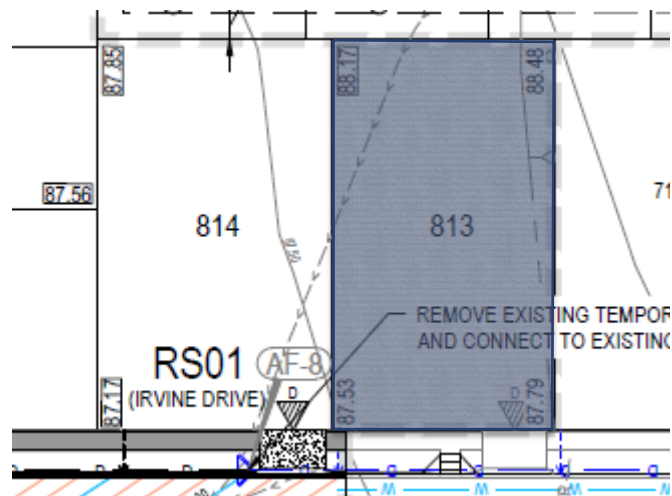


Document No: AGT.REP.307

Controlled Fill Certificate



Certificate of Controlled Filling
Earthworks Operations (AS3798 – Level 1 Inspection & Testing)
AGTE250326, William Lakes Stage 8A
Lot 813



 Level 1 Site Area

The filling in the areas as defined above and in the Level 1 Report pertaining to the above mentioned project meets the requirements for “structural fill for residential applications” in accordance with AS3798. The fill has been placed, compacted and tested in accordance with AS3798 and the fill meets the requirements for controlled fill in accordance with AS2870 (2011) “Residential Slabs and Footings”.

A handwritten signature in black ink, appearing to read 'Martin Williams', is written over a light blue circular background.

Martin Williams
Principal Geotechnical Engineer
MSc CGeol CPEng RPEQ RPEV
martinW@ausgeotest.com.au
Tel: 0484 862 371

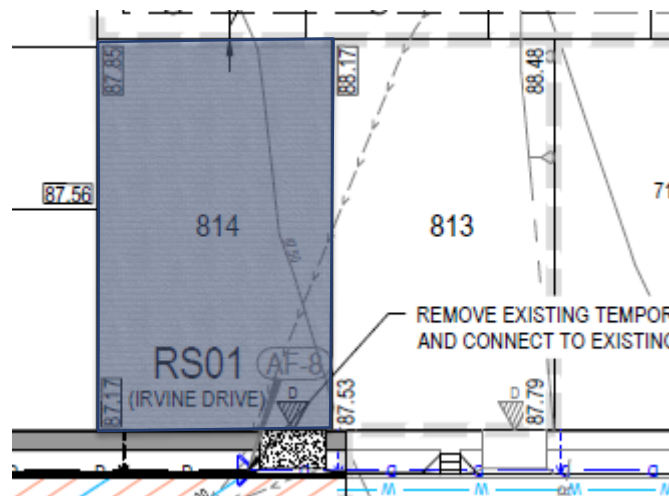



Document No: AGT.REP.307

Controlled Fill Certificate



Certificate of Controlled Filling
Earthworks Operations (AS3798 – Level 1 Inspection & Testing)
AGTE250326, William Lakes Stage 8A
Lot 814



 Level 1 Site Area

The filling in the areas as defined above and in the Level 1 Report pertaining to the above mentioned project meets the requirements for “structural fill for residential applications” in accordance with AS3798. The fill has been placed, compacted and tested in accordance with AS3798 and the fill meets the requirements for controlled fill in accordance with AS2870 (2011) “Residential Slabs and Footings”.

A handwritten signature in black ink, appearing to read 'Martin Williams', is written over a light blue background.

Martin Williams
Principal Geotechnical Engineer
MSc CGeol CPEng RPEQ RPEV
martinW@ausgeotest.com.au
Tel: 0484 862 371

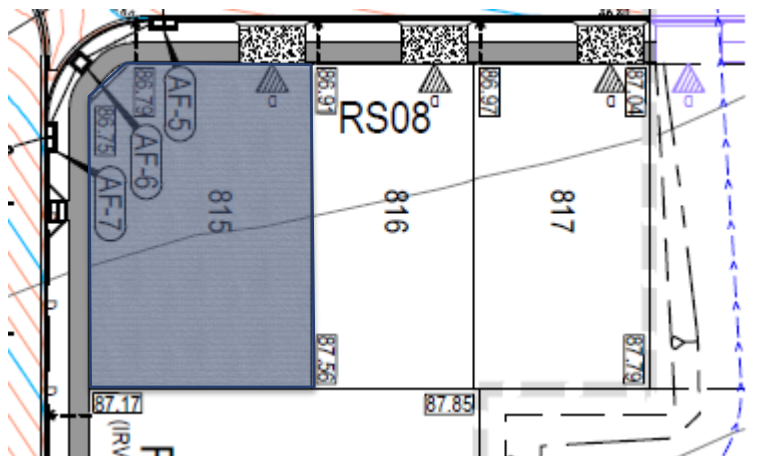


Document No: AGT.REP.307

Controlled Fill Certificate



Certificate of Controlled Filling
Earthworks Operations (AS3798 – Level 1 Inspection & Testing)
AGTE250326, William Lakes Stage 8A
Lot 815



 Level 1 Site Area

The filling in the areas as defined above and in the Level 1 Report pertaining to the above mentioned project meets the requirements for “structural fill for residential applications” in accordance with AS3798. The fill has been placed, compacted and tested in accordance with AS3798 and the fill meets the requirements for controlled fill in accordance with AS2870 (2011) “Residential Slabs and Footings”.

A handwritten signature in black ink, appearing to read 'Martin Williams', is written over a light blue circular stamp.

Martin Williams
Principal Geotechnical Engineer
MSc CGeol CPEng RPEQ RPEV
martinW@ausgeotest.com.au
Tel: 0484 862 371

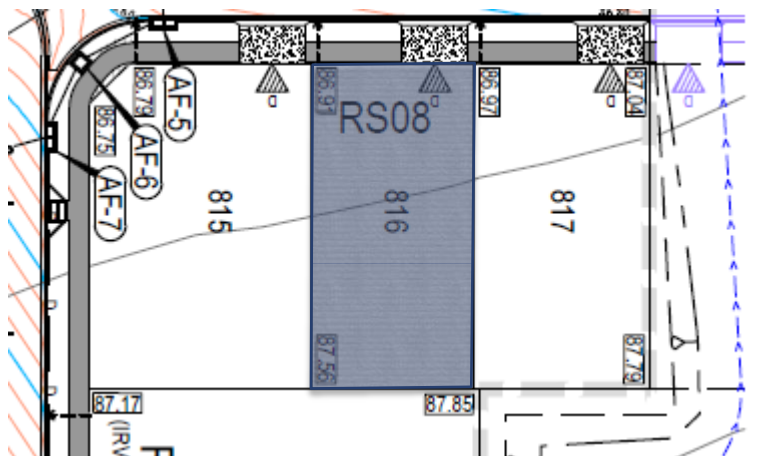


Document No: AGT.REP.307

Controlled Fill Certificate



Certificate of Controlled Filling
Earthworks Operations (AS3798 – Level 1 Inspection & Testing)
AGTE250326, William Lakes Stage 8A
Lot 816



 Level 1 Site Area

The filling in the areas as defined above and in the Level 1 Report pertaining to the above mentioned project meets the requirements for “structural fill for residential applications” in accordance with AS3798. The fill has been placed, compacted and tested in accordance with AS3798 and the fill meets the requirements for controlled fill in accordance with AS2870 (2011) “Residential Slabs and Footings”.

A handwritten signature in black ink, appearing to read 'Martin Williams', is positioned above the contact information.

Martin Williams
Principal Geotechnical Engineer
MSc CGeol CPEng RPEQ RPEV
martinW@ausgeotest.com.au
Tel: 0484 862 371

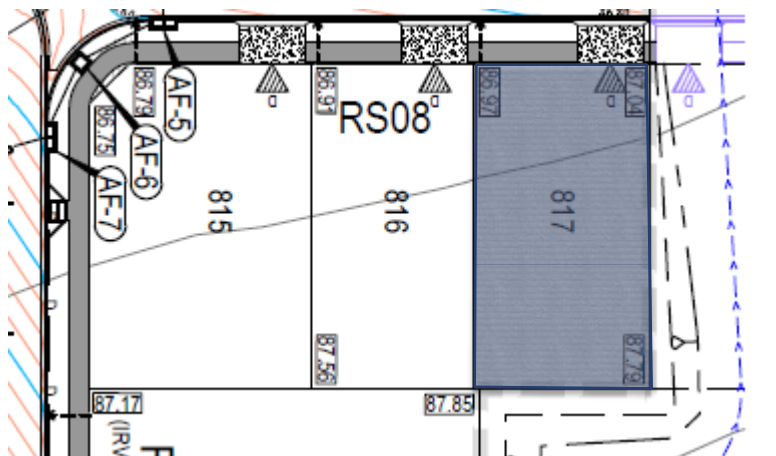


Document No: AGT.REP.307

Controlled Fill Certificate



Certificate of Controlled Filling
Earthworks Operations (AS3798 – Level 1 Inspection & Testing)
AGTE250326, William Lakes Stage 8A
Lot 817



 Level 1 Site Area

The filling in the areas as defined above and in the Level 1 Report pertaining to the above mentioned project meets the requirements for “structural fill for residential applications” in accordance with AS3798. The fill has been placed, compacted and tested in accordance with AS3798 and the fill meets the requirements for controlled fill in accordance with AS2870 (2011) “Residential Slabs and Footings”.

A handwritten signature in black ink, appearing to read 'Martin Williams', is positioned above the printed name and contact information.

Martin Williams
Principal Geotechnical Engineer
MSc CGeol CPEng RPEQ RPEV
martinW@ausgeotest.com.au
Tel: 0484 862 371

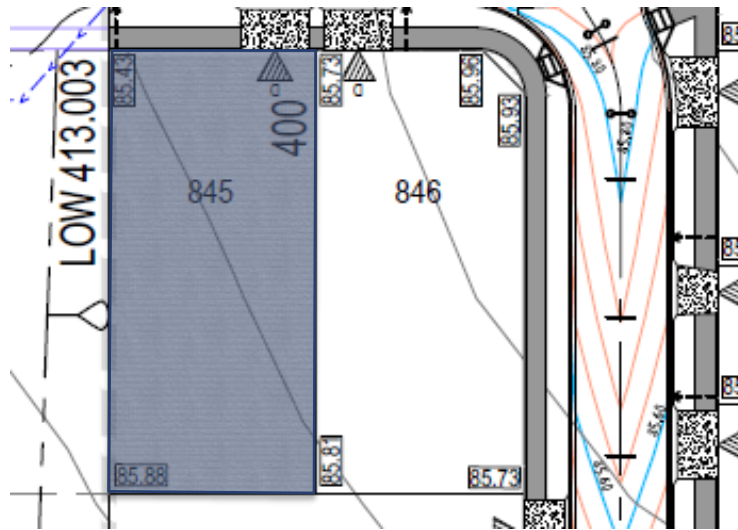



Document No: AGT.REP.307

Controlled Fill Certificate



Certificate of Controlled Filling
Earthworks Operations (AS3798 – Level 1 Inspection & Testing)
AGTE250326, William Lakes Stage 8A
Lot 845



 Level 1 Site Area

The filling in the areas as defined above and in the Level 1 Report pertaining to the above mentioned project meets the requirements for “structural fill for residential applications” in accordance with AS3798. The fill has been placed, compacted and tested in accordance with AS3798 and the fill meets the requirements for controlled fill in accordance with AS2870 (2011) “Residential Slabs and Footings”.

A handwritten signature in black ink, appearing to read 'Martin Williams', is written over a light blue circular background.

Martin Williams
Principal Geotechnical Engineer
MSc CGeol CPEng RPEQ RPEV
martinW@ausgeotest.com.au
Tel: 0484 862 371

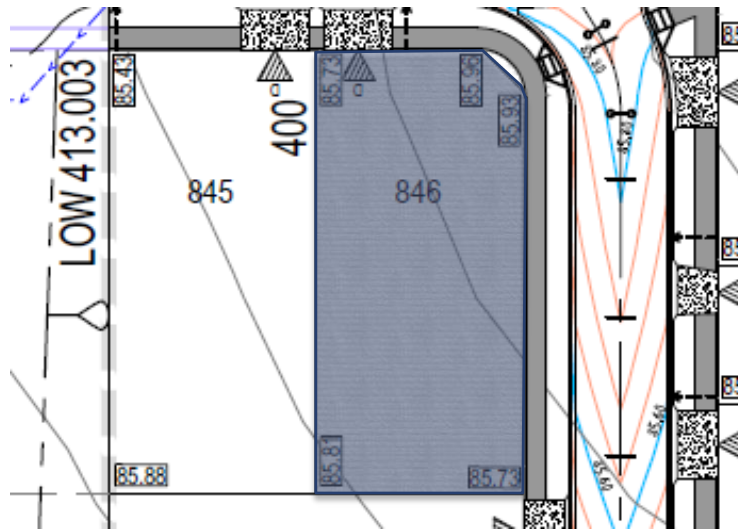



Document No: AGT.REP.307

Controlled Fill Certificate



Certificate of Controlled Filling
Earthworks Operations (AS3798 – Level 1 Inspection & Testing)
AGTE250326, William Lakes Stage 8A
Lot 846



 Level 1 Site Area

The filling in the areas as defined above and in the Level 1 Report pertaining to the above mentioned project meets the requirements for “structural fill for residential applications” in accordance with AS3798. The fill has been placed, compacted and tested in accordance with AS3798 and the fill meets the requirements for controlled fill in accordance with AS2870 (2011) “Residential Slabs and Footings”.

A handwritten signature in black ink, appearing to read 'Martin Williams'.

Martin Williams
Principal Geotechnical Engineer
MSc CGeol CPEng RPEQ RPEV
martinW@ausgeotest.com.au
Tel: 0484 862 371

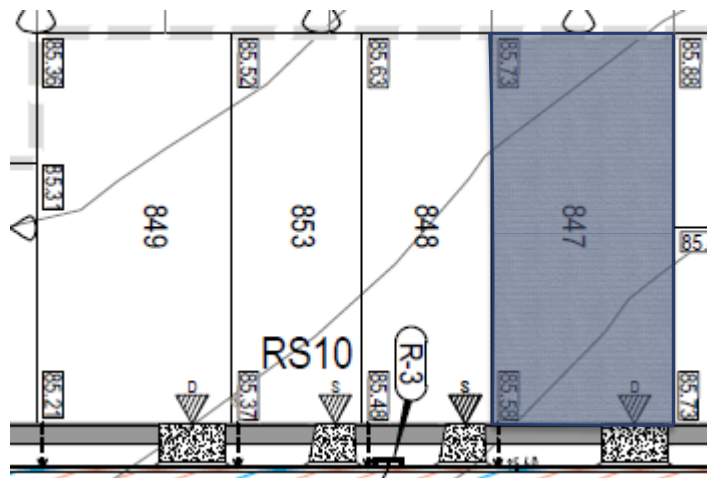


Document No: AGT.REP.307

Controlled Fill Certificate



Certificate of Controlled Filling
Earthworks Operations (AS3798 – Level 1 Inspection & Testing)
AGTE250326, William Lakes Stage 8A
Lot 847



 Level 1 Site Area

The filling in the areas as defined above and in the Level 1 Report pertaining to the above mentioned project meets the requirements for “structural fill for residential applications” in accordance with AS3798. The fill has been placed, compacted and tested in accordance with AS3798 and the fill meets the requirements for controlled fill in accordance with AS2870 (2011) “Residential Slabs and Footings”.

A handwritten signature in black ink, appearing to read 'Martin Williams', is written over a light blue circular background.

Martin Williams
Principal Geotechnical Engineer
MSc CGeol CPEng RPEQ RPEV
martinW@ausgeotest.com.au
Tel: 0484 862 371

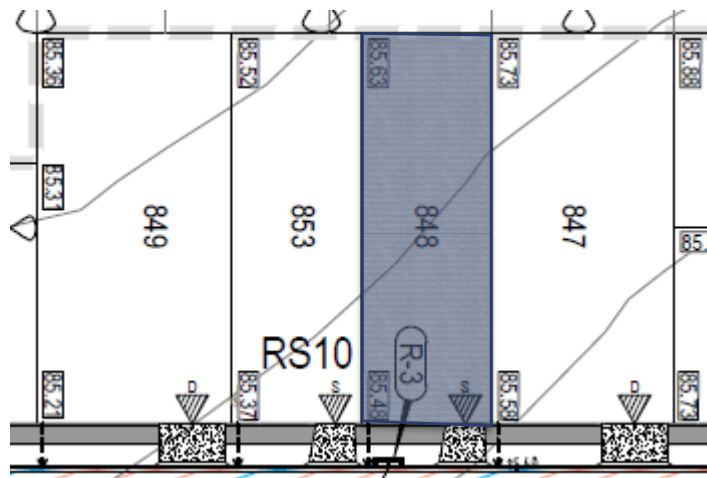


Document No: AGT.REP.307

Controlled Fill Certificate



Certificate of Controlled Filling
Earthworks Operations (AS3798 – Level 1 Inspection & Testing)
AGTE250326, William Lakes Stage 8A
Lot 848



 Level 1 Site Area

The filling in the areas as defined above and in the Level 1 Report pertaining to the above mentioned project meets the requirements for “structural fill for residential applications” in accordance with AS3798. The fill has been placed, compacted and tested in accordance with AS3798 and the fill meets the requirements for controlled fill in accordance with AS2870 (2011) “Residential Slabs and Footings”.

A handwritten signature in black ink, appearing to read 'Martin Williams', is written over a light blue circular background.

Martin Williams
Principal Geotechnical Engineer
MSc CGeol CPEng RPEQ RPEV
martinW@ausgeotest.com.au
Tel: 0484 862 371

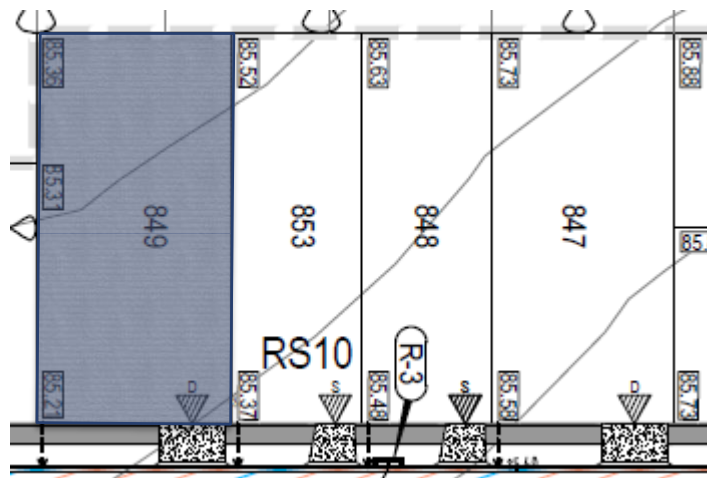


Document No: AGT.REP.307

Controlled Fill Certificate



Certificate of Controlled Filling
Earthworks Operations (AS3798 – Level 1 Inspection & Testing)
AGTE250326, William Lakes Stage 8A
Lot 849



 Level 1 Site Area

The filling in the areas as defined above and in the Level 1 Report pertaining to the above mentioned project meets the requirements for “structural fill for residential applications” in accordance with AS3798. The fill has been placed, compacted and tested in accordance with AS3798 and the fill meets the requirements for controlled fill in accordance with AS2870 (2011) “Residential Slabs and Footings”.

A handwritten signature in black ink, appearing to be 'Martin Williams', written in a cursive style.

Martin Williams
Principal Geotechnical Engineer
MSc CGeol CPEng RPEQ RPEV
martinW@ausgeotest.com.au
Tel: 0484 862 371

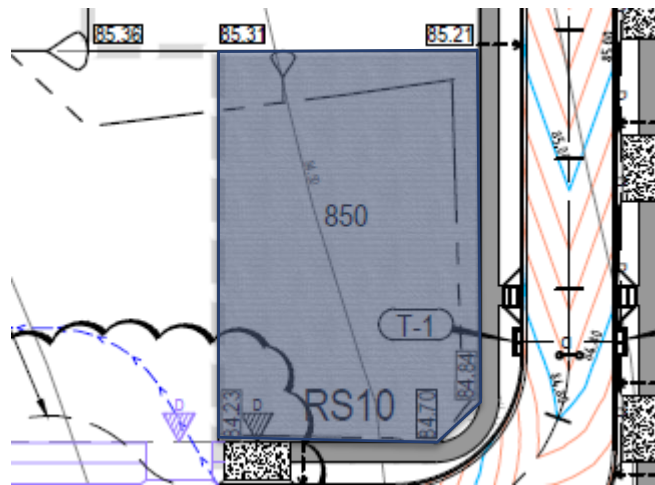


Document No: AGT.REP.307

Controlled Fill Certificate



Certificate of Controlled Filling
Earthworks Operations (AS3798 – Level 1 Inspection & Testing)
AGTE250326, William Lakes Stage 8A
Lot 850



 Level 1 Site Area

The filling in the areas as defined above and in the Level 1 Report pertaining to the above mentioned project meets the requirements for “structural fill for residential applications” in accordance with AS3798. The fill has been placed, compacted and tested in accordance with AS3798 and the fill meets the requirements for controlled fill in accordance with AS2870 (2011) “Residential Slabs and Footings”.

A handwritten signature in black ink, appearing to be 'Martin Williams', written in a cursive style.

Martin Williams
Principal Geotechnical Engineer
MSc CGeol CPEng RPEQ RPEV
martinW@ausgeotest.com.au
Tel: 0484 862 371

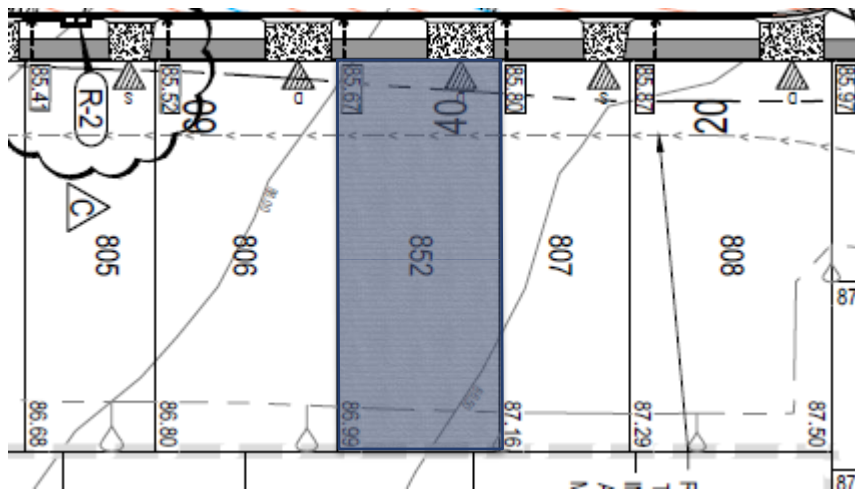


Document No: AGT.REP.307

Controlled Fill Certificate



Certificate of Controlled Filling
Earthworks Operations (AS3798 – Level 1 Inspection & Testing)
AGTE250326, William Lakes Stage 8A
Lot 852



 Level 1 Site Area

The filling in the areas as defined above and in the Level 1 Report pertaining to the above mentioned project meets the requirements for “structural fill for residential applications” in accordance with AS3798. The fill has been placed, compacted and tested in accordance with AS3798 and the fill meets the requirements for controlled fill in accordance with AS2870 (2011) “Residential Slabs and Footings”.

A handwritten signature in black ink, appearing to read 'Martin Williams', is written over a light blue circular background.

Martin Williams
Principal Geotechnical Engineer
MSc CGeol CPEng RPEQ RPEV
martinW@ausgeotest.com.au
Tel: 0484 862 371

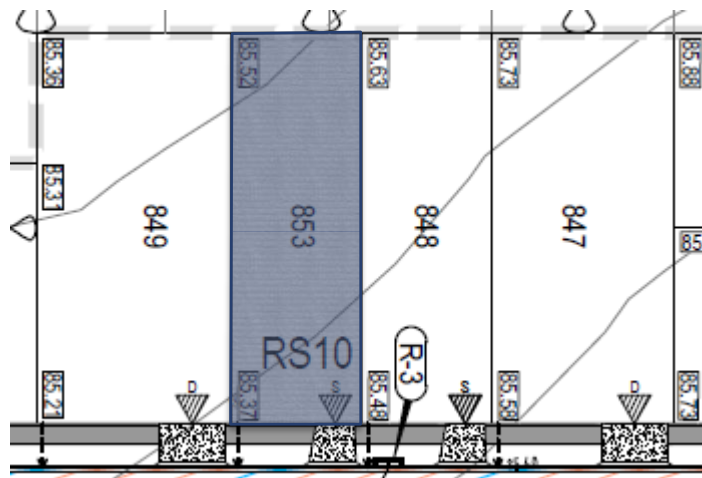


Document No: AGT.REP.307

Controlled Fill Certificate



Certificate of Controlled Filling
Earthworks Operations (AS3798 – Level 1 Inspection & Testing)
AGTE250326, William Lakes Stage 8A
Lot 853



 Level 1 Site Area

The filling in the areas as defined above and in the Level 1 Report pertaining to the above mentioned project meets the requirements for “structural fill for residential applications” in accordance with AS3798. The fill has been placed, compacted and tested in accordance with AS3798 and the fill meets the requirements for controlled fill in accordance with AS2870 (2011) “Residential Slabs and Footings”.

A handwritten signature in black ink, appearing to read 'Martin Williams'.

Martin Williams
Principal Geotechnical Engineer
MSc CGeol CPEng RPEQ RPEV
martinW@ausgeotest.com.au
Tel: 0484 862 371



Document No: AGT.REP.307