

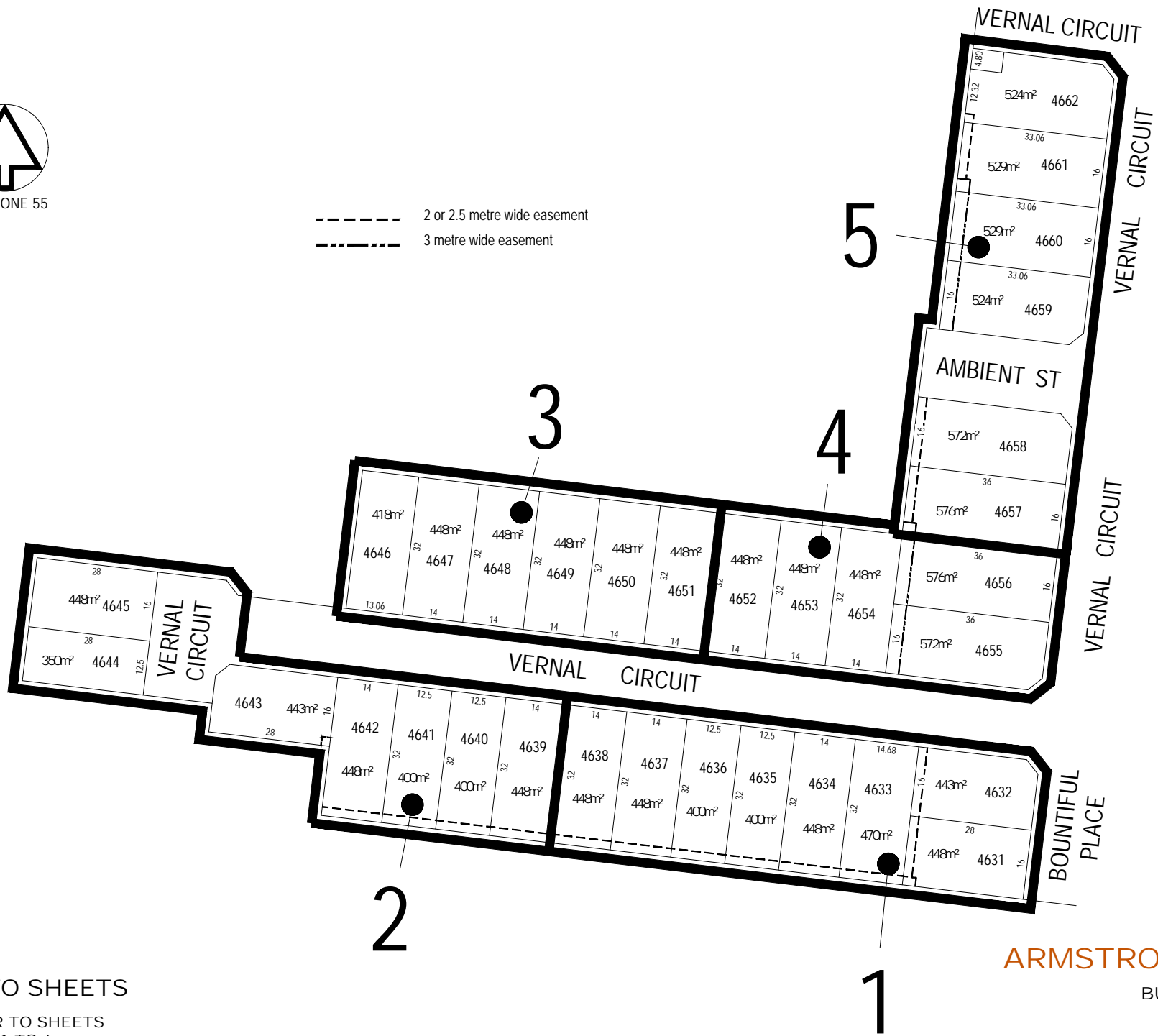




MGA ZONE 55

 2 or 2.5 metre wide easement
 3 metre wide easement



KEY TO SHEETS

REFER TO SHEETS
 1 TO 6
 FOR DETAIL

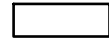



ARMSTRONG Mt DUNED


BUILDING ENVELOPE PLAN
 STAGE 46B

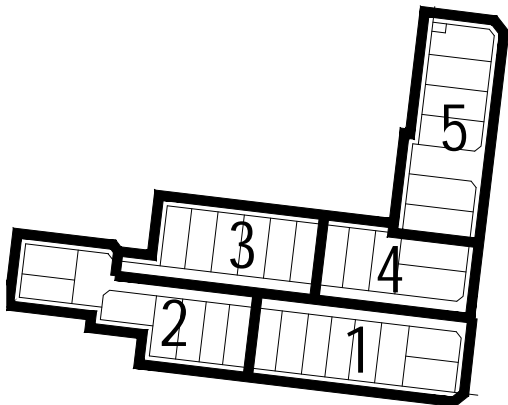
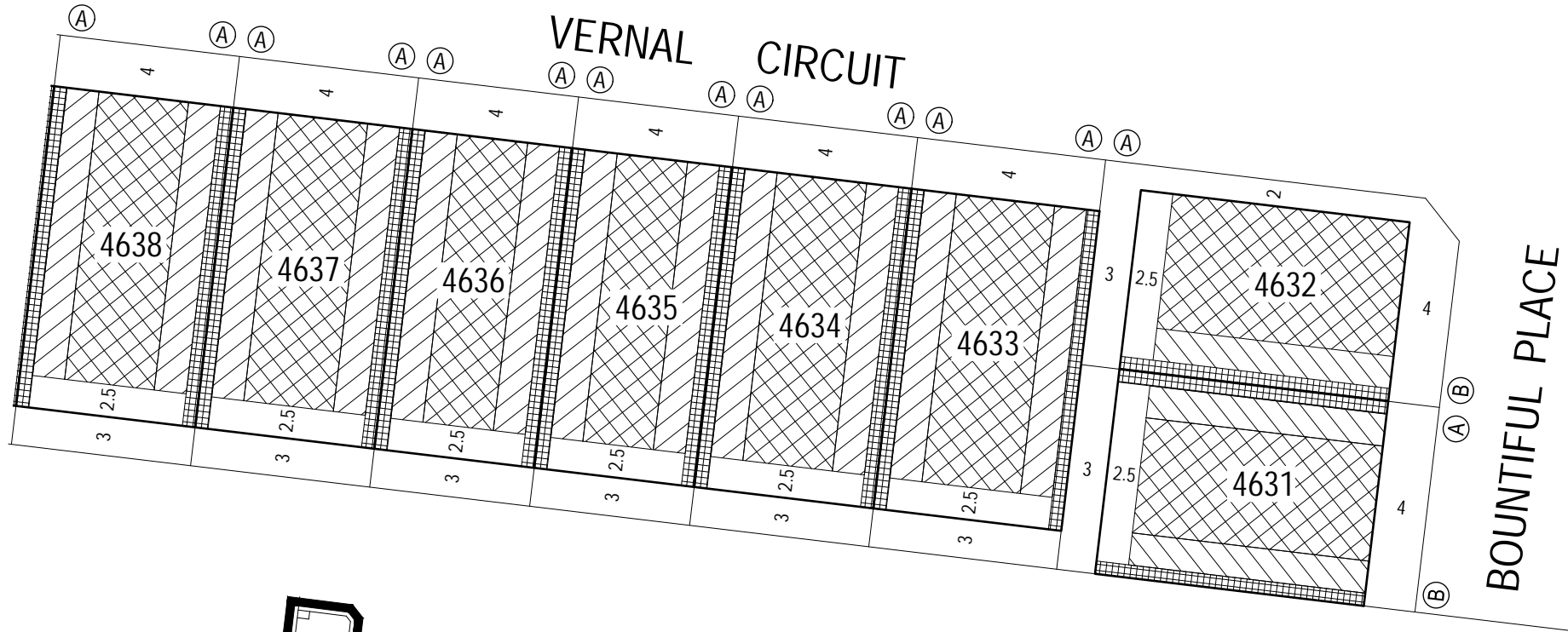
May 2020
 Version:D



NOTATIONS

-  Single Storey Building Envelope (height not exceeding 3.6m)
-  Overlooking Zone - Habitable room windows/raised open spaces are a source of overlooking
-  Non Overlooking Zone - Habitable room windows/raised open spaces are not a source of overlooking
-  Building to Boundary Zone

-  Building Envelope Boundary Profile Type
- 4605** Lot number
- 3** Setback minimum required (if 0, a building can be constructed on the boundary provided that the building height and length requirements are met)



KEY TO SHEETS

This Building Envelope Plan is to be read in conjunction with the associated Building Envelope Profiles and Design Guidelines.

The registered proprietor/s of the lot are required to build in accordance with building envelopes shown hereon and in the "Profile Diagrams" in sheet 6.

Detailed design of roads, CIRCUITways and footpaths is provided in the relevant Engineering Plans.

Detailed design of landscape works is provided in the relevant Landscape Plans.

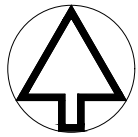
All details subject to City of Greater Geelong Council approval.

ARMSTRONG Mt DUNEED

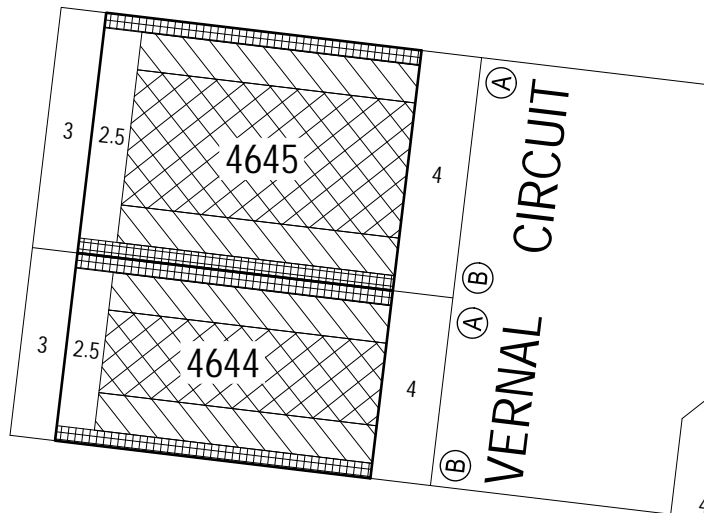
BUILDING ENVELOPE PLAN
STAGE 46B

46B / 1





stage sheet




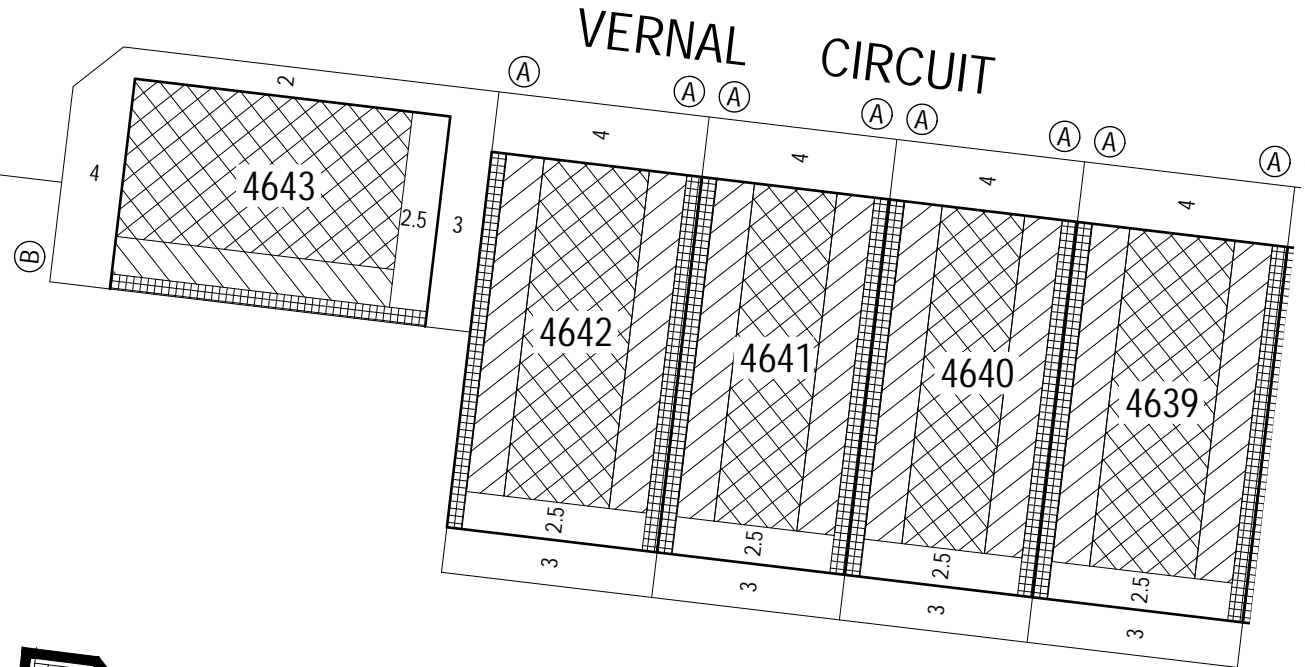
MGA ZONE 55



NOTATIONS

-  Single Storey Building Envelope (height not exceeding 3.6m)
-  Overlooking Zone - Habitable room windows/raised open spaces are a source of overlooking
-  Non Overlooking Zone - Habitable room windows/raised open spaces are not a source of overlooking
-  Building to Boundary Zone

-  Building Envelope Boundary Profile Type
- 4605** Lot number
- 3** Setback minimum required (if 0, a building can be constructed on the boundary provided that the building height and length requirements are met)



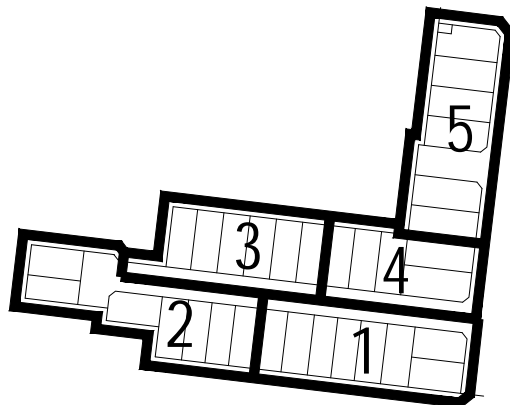
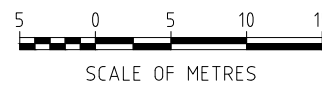
This Building Envelope Plan is to be read in conjunction with the associated Building Envelope Profiles and Design Guidelines.

The registered proprietor/s of the lot are required to build in accordance with building envelopes shown hereon and in the "Profile Diagrams" in sheet 6.

Detailed design of roads, CIRCUITways and footpaths is provided in the relevant Engineering Plans.

Detailed design of landscape works is provided in the relevant Landscape Plans.

All details subject to City of Greater Geelong Council approval.



KEY TO SHEETS

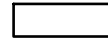


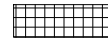
ARMSTRONG Mt DUNED


BUILDING ENVELOPE PLAN
STAGE 46B

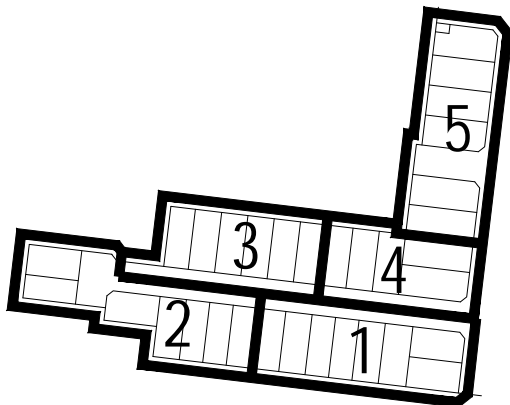
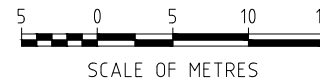
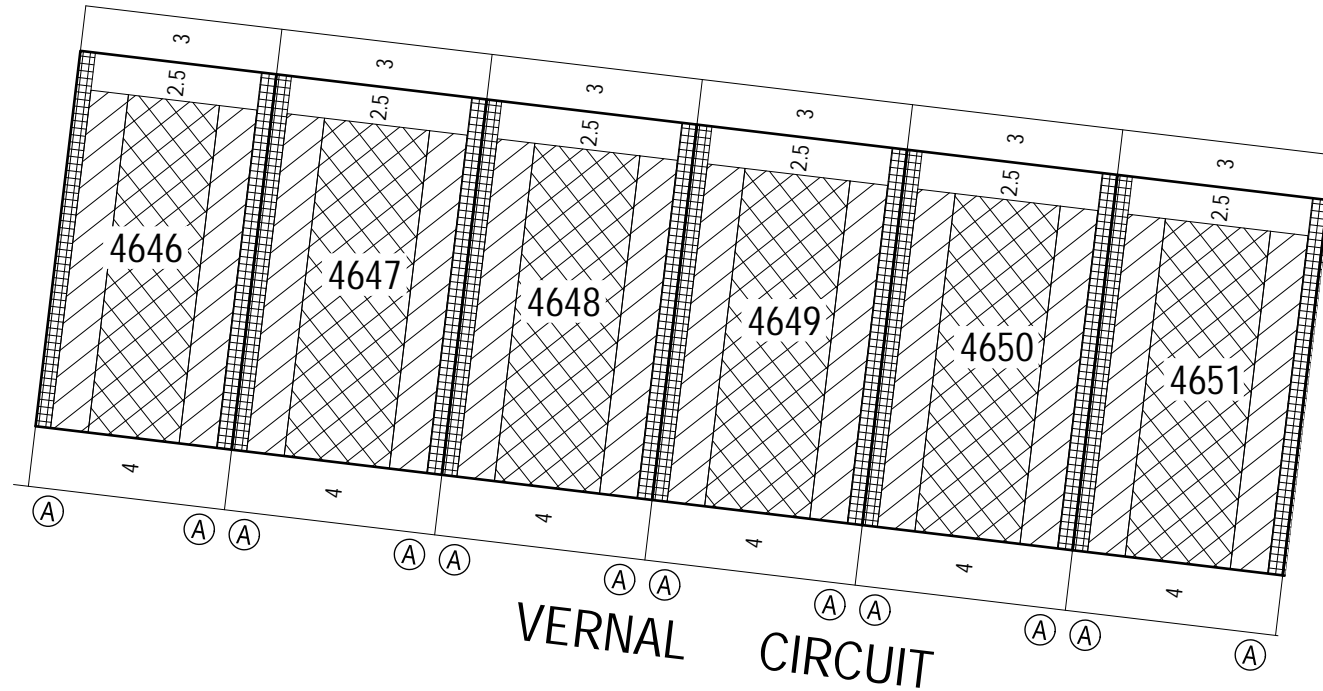
46B / 2
stage sheet



NOTATIONS

-  Single Storey Building Envelope (height not exceeding 3.6m)
-  Overlooking Zone - Habitable room windows/raised open spaces are a source of overlooking
-  Non Overlooking Zone - Habitable room windows/raised open spaces are not a source of overlooking
-  Building to Boundary Zone

-  Building Envelope Boundary Profile Type
- 4605** Lot number
- 3** Setback minimum required (if 0, a building can be constructed on the boundary provided that the building height and length requirements are met)



KEY TO SHEETS

This Building Envelope Plan is to be read in conjunction with the associated Building Envelope Profiles and Design Guidelines.

The registered proprietor/s of the lot are required to build in accordance with building envelopes shown hereon and in the "Profile Diagrams" in sheet 6.

Detailed design of roads, CIRCUITways and footpaths is provided in the relevant Engineering Plans.

Detailed design of landscape works is provided in the relevant Landscape Plans.

All details subject to City of Greater Geelong Council approval.





ARMSTRONG Mt DUNEED

BUILDING ENVELOPE PLAN
STAGE 46B

46B / 3
stage sheet



NOTATIONS

-  Single Storey Building Envelope (height not exceeding 3.6m)
-  Overlooking Zone - Habitable room windows/raised open spaces are a source of overlooking
-  Non Overlooking Zone - Habitable room windows/raised open spaces are not a source of overlooking
-  Building to Boundary Zone

(A)

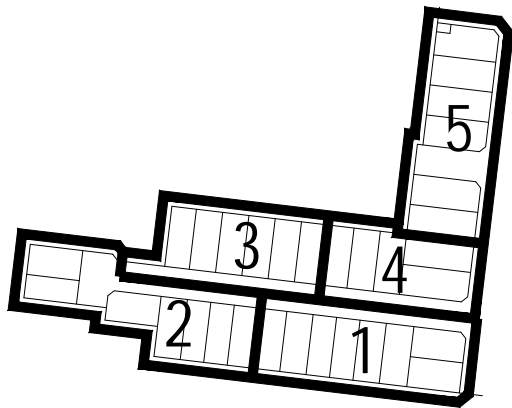
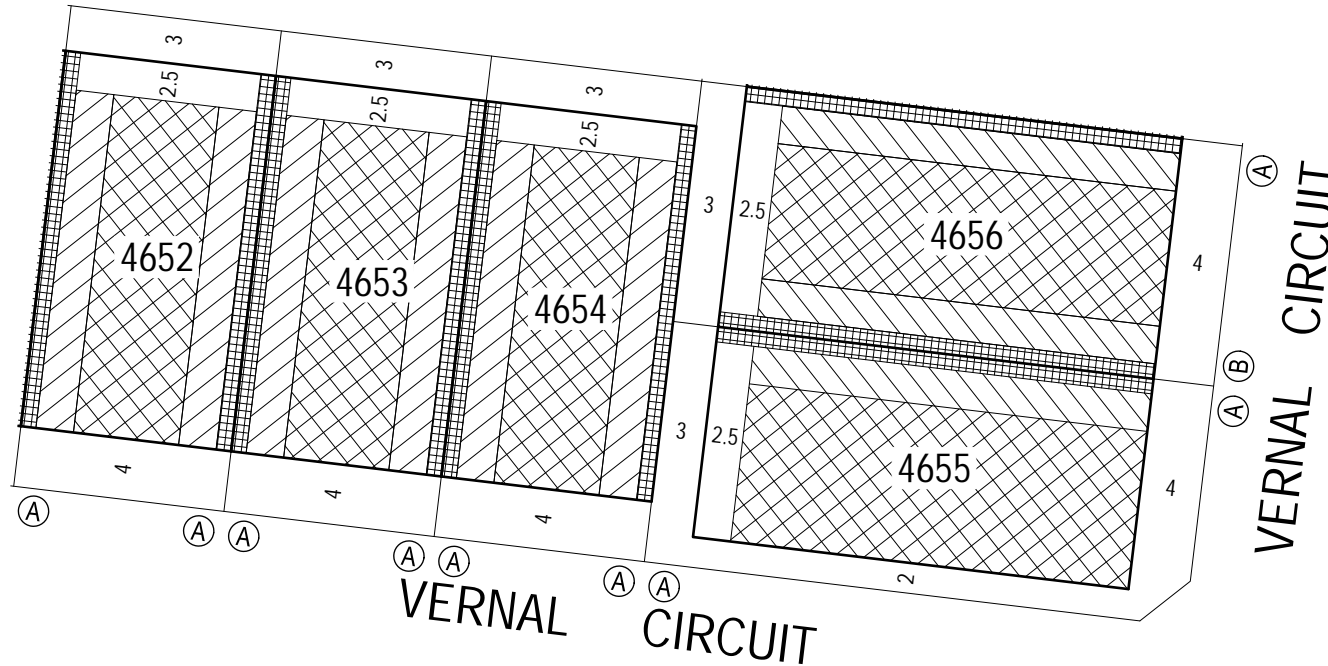
4605

3

Building Envelope Boundary Profile Type

Lot number

Setback minimum required (if 0, a building can be constructed on the boundary provided that the building height and length requirements are met)



KEY TO SHEETS



This Building Envelope Plan is to be read in conjunction with the associated Building Envelope Profiles and Design Guidelines.

The registered proprietor/s of the lot are required to build in accordance with building envelopes shown hereon and in the "Profile Diagrams" in sheet 6.

Detailed design of roads, CIRCUITways and footpaths is provided in the relevant Engineering Plans.

Detailed design of landscape works is provided in the relevant Landscape Plans.

All details subject to City of Greater Geelong Council approval.

ARMSTRONG Mt DUNEED

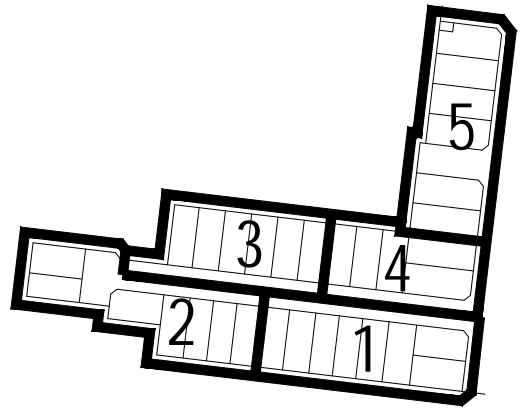
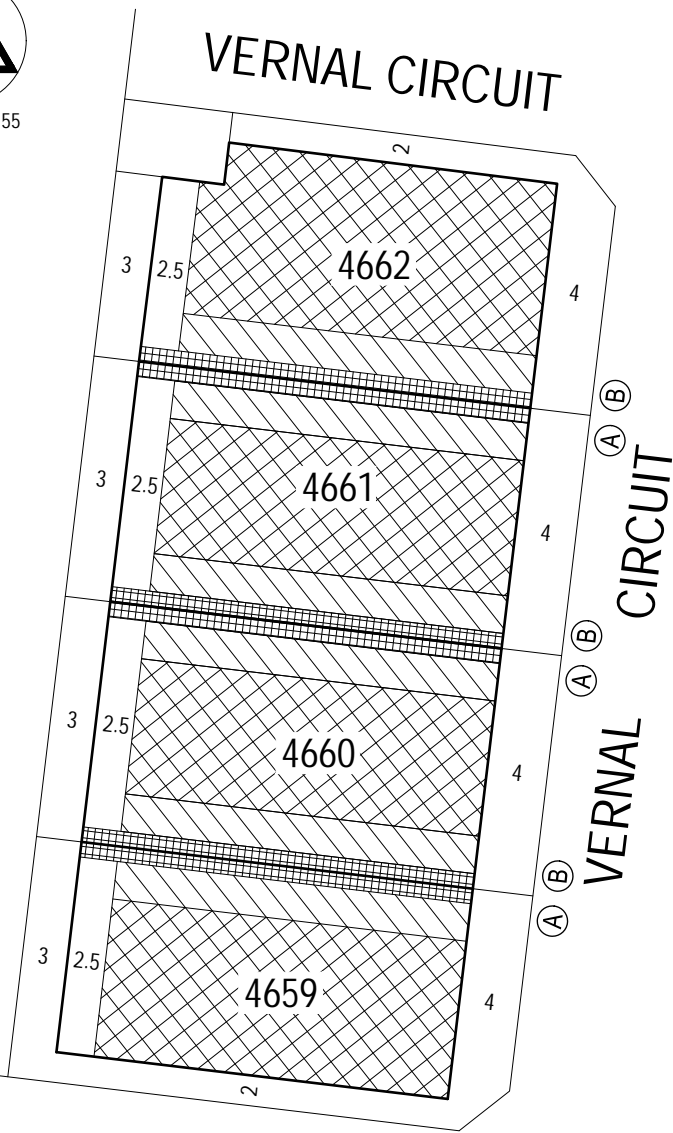
BUILDING ENVELOPE PLAN
STAGE 46B

46B / 4

stage sheet



MGA ZONE 55

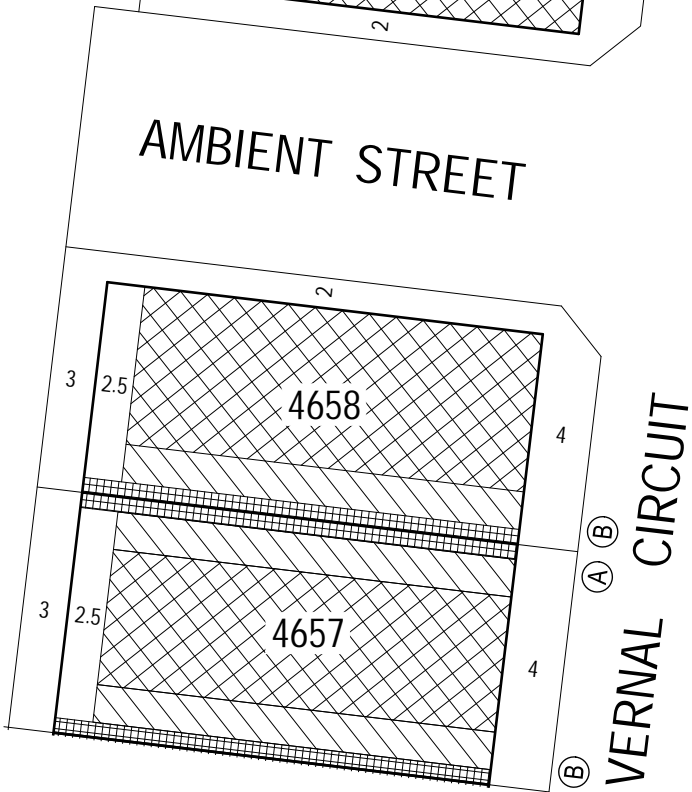


KEY TO SHEETS

NOTATIONS

- Single Storey Building Envelope (height not exceeding 3.6m)
- Overlooking Zone - Habitable room windows/raised open spaces are a source of overlooking
- Non Overlooking Zone - Habitable room windows/raised open spaces are not a source of overlooking
- Building to Boundary Zone)
- Building Envelope Boundary Profile Type
- 4605 Lot number
- 3 Setback minimum required (if 0, a building can be constructed on the boundary provided that the building height and length requirements are met)

This Building Envelope Plan is to be read in conjunction with the associated Building Envelope Profiles and Design Guidelines. The registered proprietor/s of the lot are required to build in accordance with building envelopes shown hereon and in the "Profile Diagrams" in sheet 6.



ARMSTRONG Mt DUNED

BUILDING ENVELOPE PLAN
STAGE 46B

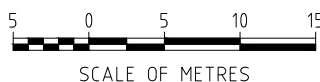
46B / 5

stage sheet

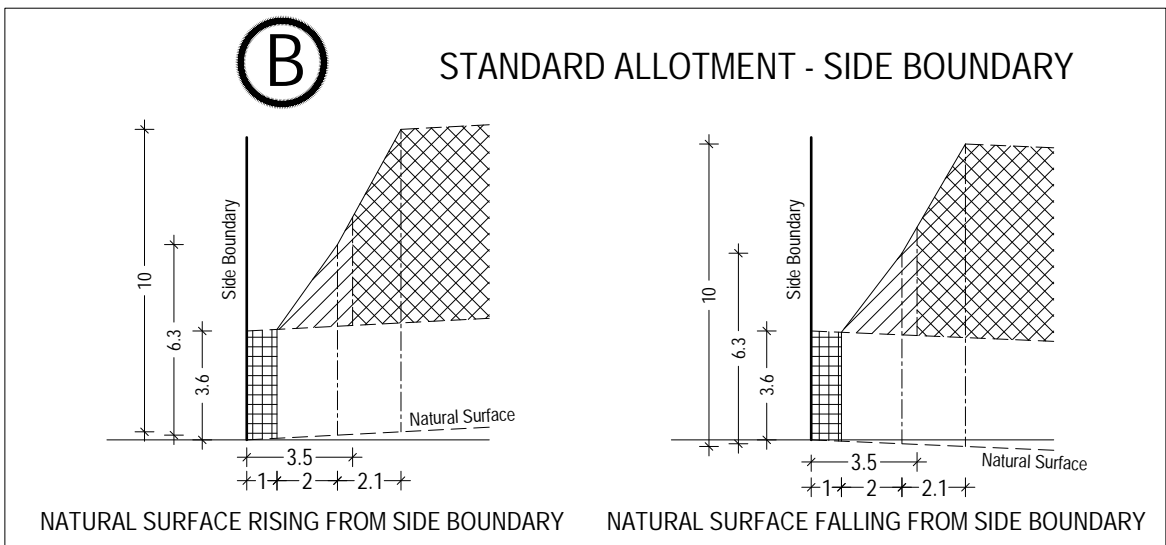
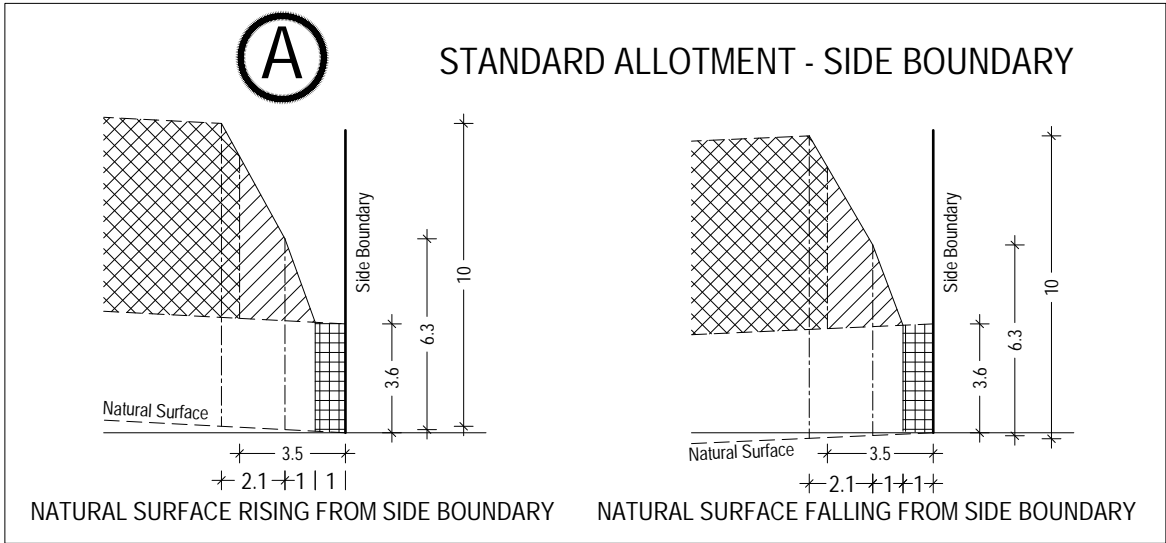
Detailed design of roads, CIRCUITways and footpaths is provided in the relevant Engineering Plans.

Detailed design of landscape works is provided in the relevant Landscape Plans.

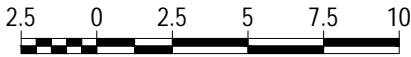
All details subject to City of Greater Geelong Council approval.



SCALE OF METRES



SCALE 1:250@A4



ARMSTRONG Mt DUNEED

BUILDING ENVELOPE PROFILES
STAGE 46B

46B / 16
stage sheet

Sheet 6 of 6

May 2020
Version:D

 Single Storey Building Envelope



Non Overlooking Zone
Habitable room windows/raised open spaces are not a source of overlooking



Overlooking Zone
Habitable room windows/raised open spaces are a source of overlooking



Building to Boundary Zone