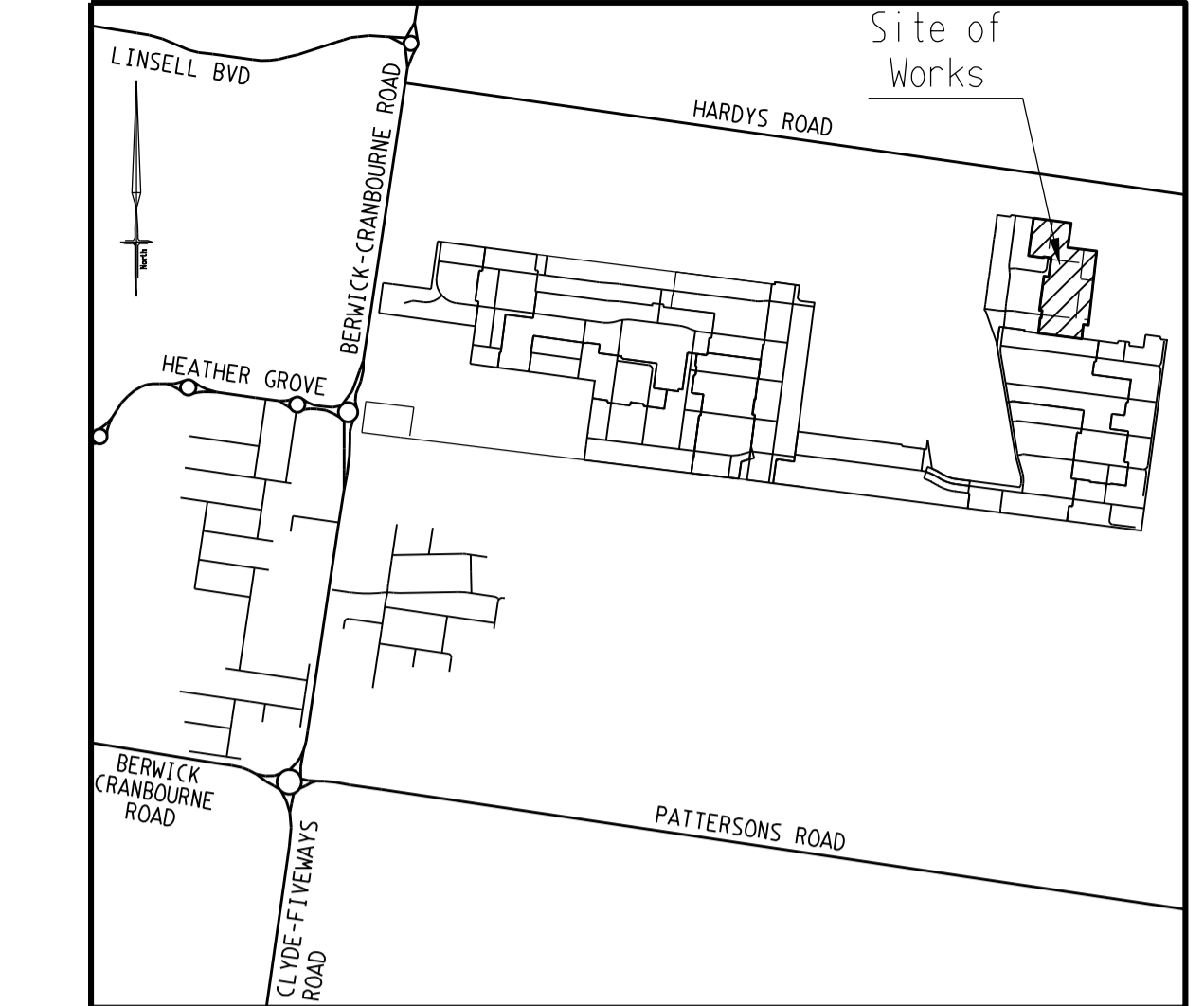
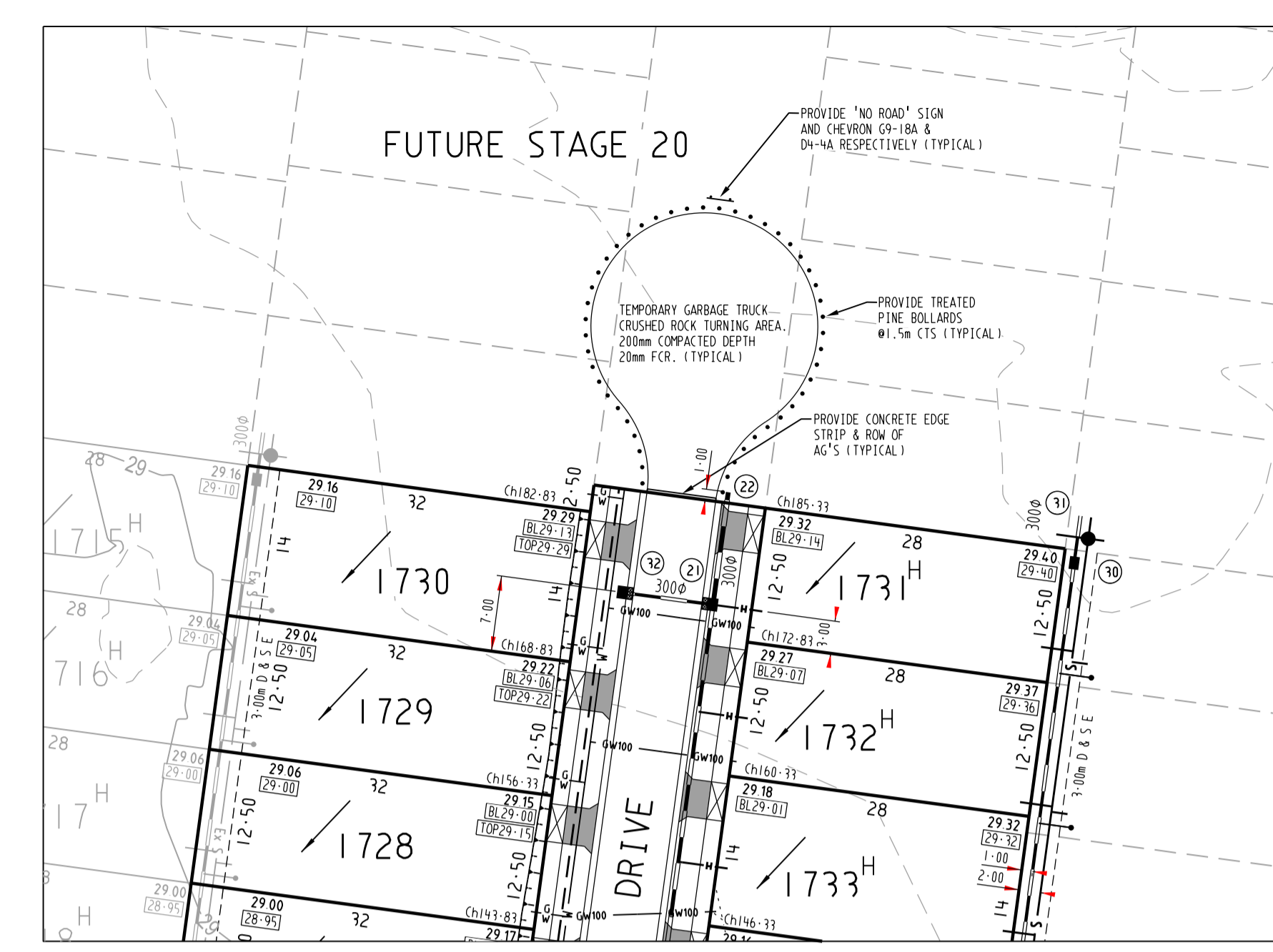
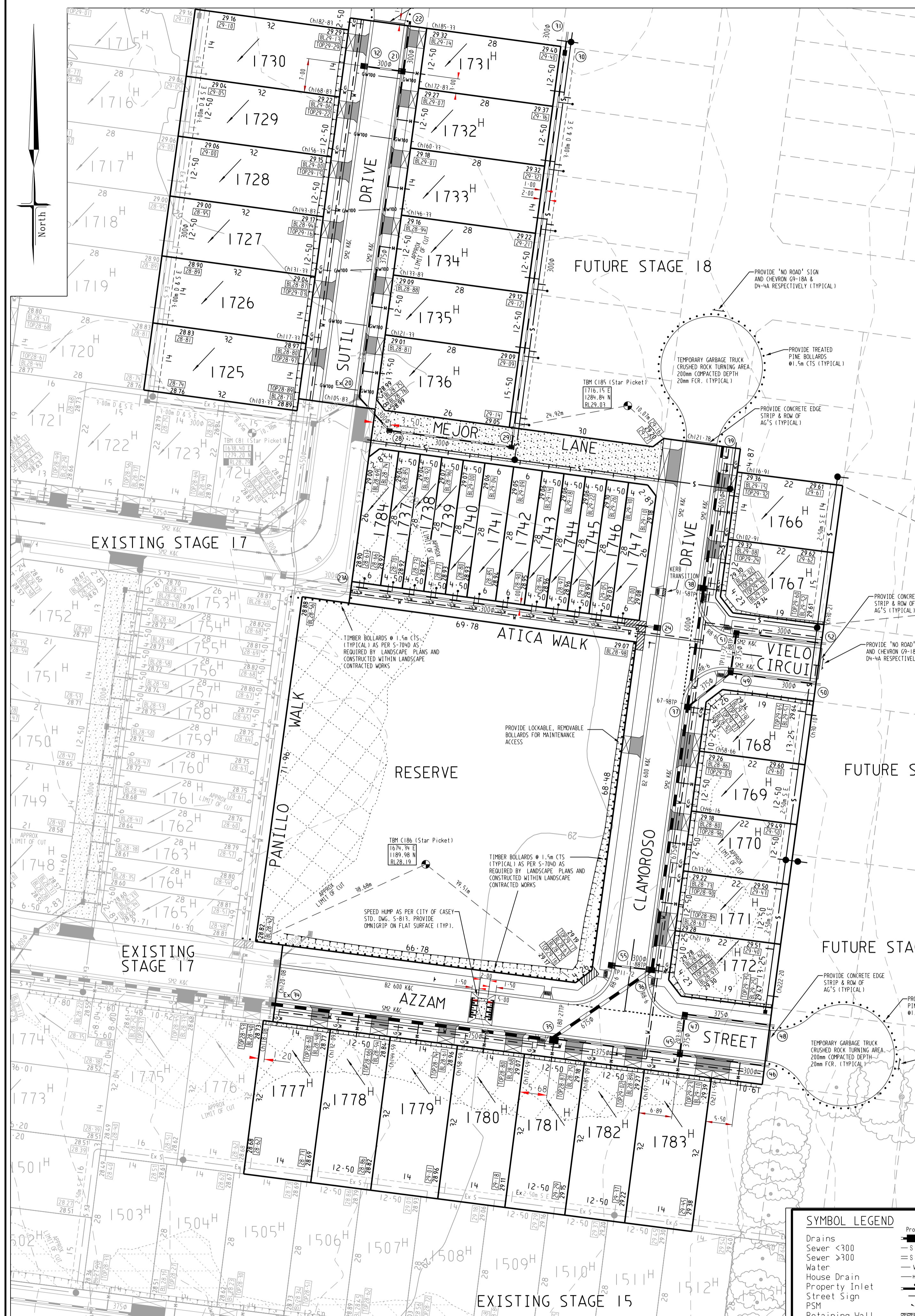


FOR CONTINUATION REFER TO INSET RIGHT



LOCALITY PLAN
NTS
MELWAYS: 135 C5

SHEET INDEX

SHT No.	VER	DESCRIPTION
1	E	DETAIL PLAN, SERVICES SCHEDULE & SHEET INDEX
2	A	NOTES, PAVEMENT DETAILS, TYPICAL SECTIONS
3	C	INTERSECTION DETAILS - SHEET 1
4	C	INTERSECTION DETAILS - SHEET 2
5	B	AZZAM STREET - LONGITUDINAL & CROSS SECTIONS
6	A	CLAMOROSO DRIVE - LONGITUDINAL & CROSS SECTIONS
7	A	SUTIL DRIVE - LONGITUDINAL & CROSS SECTIONS
8	B	VIELO STREET - LONGITUDINAL & CROSS SECTIONS
9	B	DRAINAGE LONGITUDINAL SECTIONS, PIT SCHEDULE & PIT DETAILS
10	C	DRAINAGE LONGITUDINAL SECTIONS, PIT SCHEDULE & PIT DETAILS
11	A	SIGNAGE & LINEMARKING PLAN

SERVICES OFFSETS AND LOCATIONS

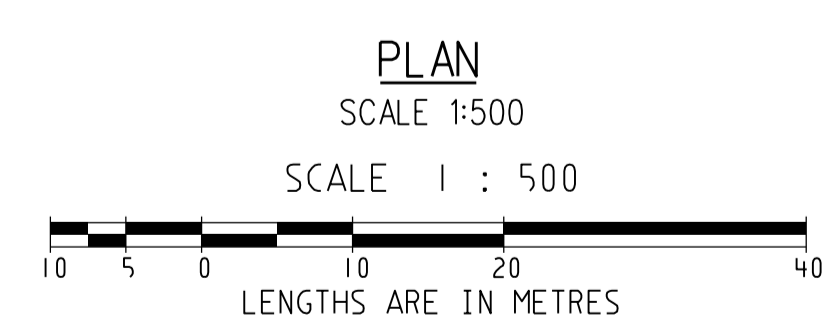
STREET NAME	Rd RESERVE	WATER		GAS	ELECTRICITY		FIBRE TO THE HOME		Bk. of KERB	JOINT TRENCHING	VICCODE STREET CLASSIFICATION
		DW	NDW		CABLES	POLES	FTTH CABLES	FTTH PITS			
AZZAM STREET (LOTS 1777-1783)	16-00	2-70 S	2-20 S	1-80 S	2-55 N	1-00 BOK	1-85 N	1-20 S #	4-35 S 4-05 W 4-05 E	G & W, FTTH & E	STREET - LEVEL 1
SUTIL DRIVE (LOTS 1725-1730)	16-00	2-85 W	2-35 W	1-90 W	2-55 E	1-00 BOK	1-85 E	1-20 W #	4-35 E 4-05 W 4-05 E	G & W, FTTH & E	STREET - LEVEL 1
CLAMOROSO DRIVE	16-00	2-85 E	2-35 E	1-90 E	2-55 W	1-00 BOK	1-85 W	1-20 E #	4-35 E 4-05 W 4-05 S	G & W, FTTH & E	STREET - LEVEL 1
VIELO CIRCUIT	16-00	3-20 N	2-70 N	2-25 N	2-55 S	1-00 BOK	1-85 S	1-78 N	4-35 W 4-05 S 0-00 N	G & W, FTTH & E	STREET - LEVEL 1
MEJOR LANE	8-00	-	-	-	-	0-80 BOK	-	-	1-00 S 0-00 N	-	ACCESS LANE
ATICA WALK	4-50	2-75 N	2-30 N	1-85 N	3-75 N	0-80 BOK	3-25 N	3-25 N	-	G & W, FTTH & E	ACCESS WALKWAY

DENOTES PIT IS LOCATED IN FOOTPATH

WARNING
BEWARE OF UNDERGROUND SERVICES
THE LOCATIONS OF UNDERGROUND SERVICES ARE APPROXIMATE ONLY AND THEIR EXACT POSITION SHOULD BE PROVEN ON SITE. NO GUARANTEE IS GIVEN THAT ALL EXISTING SERVICES ARE SHOWN.

ATTENTION TO CONTRACTOR

- IT IS THE CONTRACTORS RESPONSIBILITY TO ENSURE THAT THE DIGITAL PLAN, PROVIDED FOR SETOUT PURPOSES, MATCHES THE TBM COORDINATES SHOWN.
- Contractor to ensure that the site is pegged and/or set out checked by the licenced surveyor responsible for certifying the Plan of Subdivision prior to underground infrastructure being installed.
- Where concrete works about a sewer access chamber surround or similar structure, an expansion joint of approved material shall be provided between the two faces.



SYMBOL LEGEND

Prop	Exist	Ex/Natural/FS Level	28.47	28.28-4.7
—	—	FS @ Building Line	8.24-3.7	10.24-3.7
—	—	Top/Toe of Batter	10.24-3.7	10.24-3.7
—	—	Top Ret. Wall Level	10.24-3.7	10.24-3.7
—	—	100yr Flood Level	10.24-3.7	10.24-3.7
—	—	Fill Prop/Ex	10.24-3.7	10.24-3.7
—	—	Cut Prop/Ex	10.24-3.7	10.24-3.7
—	—	Drains	—	—
—	—	Sewer <300	—	—
—	—	Sewer >300	—	—
—	—	Water	—	—
—	—	House Drain	—	—
—	—	Property Inlet	—	—
—	—	Street Sign	—	—
—	—	PSM	—	—
—	—	Retaining Wall	—	—
—	—	Conduits 50mm	—	—
—	—	Conduits 100mm	—	—
—	—	Ex Gas/Elect/Tel	—	—

VER	DATE	REMARKS	CHECKED
E	19/11/19	LINES 29-31 & 35-48 AMENDED, SHEETS 3,9 & 10 AMENDED, SHEET INDEX UPDATED.	
D	24/10/19	SHEET 4 AMENDED, SHEET INDEX UPDATED.	
C	17/10/19	VIELO CIRCUIT AMENDED, SHEET INDEX UPDATED.	
B	03/10/19	LOT 1784 ADDED, SHEET INDEX UPDATED.	
A	20/09/19	ISSUED FOR CONSTRUCTION	

breese pitt dixon pty. ltd.
land surveyors civil engineers

1/19 coto street
hawthorn east, 3123
telephone 8823 2300
fax no. 8823 2310

DELARAY ESTATE
STAGE 17B

MELWAY REF. 135-B-5
SURVEY BPD
DESIGN GL
DRAWN GL

MUNICIPALITY CASEY
REFERENCE 8974 E/17B

SCALE AS SHOWN DATUM AHD DATE AUG'19 SHEET 1 OF 11