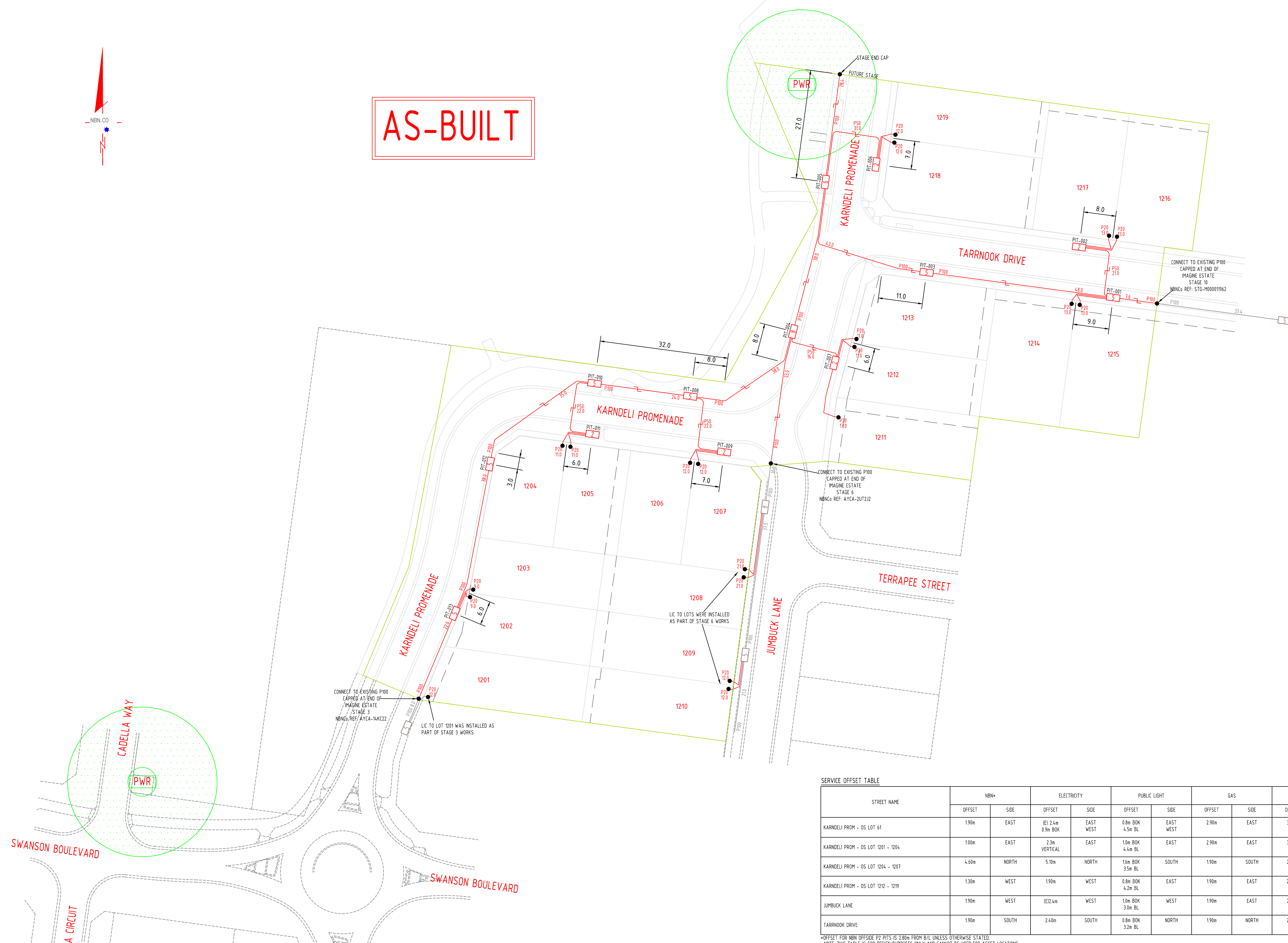


AS-BUILT



PIT LEGEND	
Shared Trench Symbol	
PIT-ID	Service Drop Access Pit
2	650mm(L) x 280mm(W) x 565mm(D)
PIT-ID	Network Boundary/Local Network Pit
5	700mm(L) x 450mm(W) x 650mm(D)
PIT-ID	Distribution/Local Network Connection Pit
6	1360mm(L) x 555mm(W) x 650mm(D)
PIT-ID	Distribution/Local Network Connection Pit
8	1360mm(L) x 555mm(W) x 860mm(D)
PIT-ID	Fibre Distribution Hub Pit
9	2000mm(L) x 555mm(W) x 900mm(D)

PIT LIDS TO BE LABELLED "NBN".

CONSTRUCTOR IS TO ENSURE PITS ARE INSTALLED IN NON-TRAFFICABLE AREAS, AT LEAST 15m AWAY FROM EPR ZONES AND CLEAR OF OTHER AUTHORITY EASEMENTS.

SERVICES CLEARANCES	
SERVICES ITEM	MINIMUM RADIAL CLEARANCES
GAS - LARGE MAIN (OVER 110mm DIA.)	300mm
SMALL MAIN (110mm DIA. OR LESS)	150mm
ELECTRICAL - HIGH VOLTAGE	300mm
LOW VOLTAGE	100mm *2
WATER - HIGH CAPACITY MAIN	300mm
LOCAL RETICULATION	150mm
SEWER - MAIN	300mm
CONNECTION PIPE	150mm
OTHER TELECOMMUNICATIONS	300mm *1
DRAINAGE - MAIN	300mm
CONNECTION PIPE	150mm

* 1 - REDUCED SEPARATION IS POSSIBLE WHERE ALL PARTIES ARE CONSULTED AND AGREEMENT IS REACHED

* 2 - ONLY WHERE PROTECTION BARRIERS ARE USED, FOR EXAMPLE, CONDUIT, BEDDING, MARKER TAPE & COVER BATTEN

PCD / NTD LOCATIONS

P20 LEAD-IN LOCATIONS ARE INDICATIVE ONLY, AND ARE TO BE CONFIRMED AT TIME OF CONSTRUCTION.

FOR LOCATION REQUIREMENTS REFER TO NBN DOCUMENT: NBN-DES-STD-0011

RESIDENTIAL PREPARATION AND INSTALLATION: SINGLE DWELLING UNITS (SDUs) AND MULTI DWELLING UNITS (MDUs)

ISSUE DATE: 12 DEC 2016 REVISION NO. 11.0

DESIGN & INSTALLATION SPECIFICATIONS

THIS DESIGN IS TO BE READ IN CONJUNCTION WITH NBN DOCUMENT: NBN-TE-CIO-194

"NEW DEVELOPMENTS: DEPLOYMENT OF THE NBN PIT AND CONDUIT NETWORK"

ISSUE DATE: 08/12/2017, REVISION: 8

ALL DEPLOYMENT WORKS TO BE COMPLETED TO NBN SPECIFICATIONS AS OUTLINED IN THE ABOVE DOCUMENT

SDU Development Information

Development Name: IMAGINE ESTATE

Developer Company: ADTECH CIVIL PTY LTD

Development Address: KARDELII PROMENADE, STRATHFIELDSAYE, VIC

Authorised Rep: GEORGE PETROV

Phone: 0447 959 248

E-Mail: george.petrov@adtechcontracting.com.au

nbn Reference Number: STG-M000047075

Stage Number: 12

Design Revision: A

BILL OF MATERIAL			
NO OF LOTS: 19			
PITS		DUCTS	
SIZE	QTY	SIZE	QTY MTRS
2	5	P100	11 355.0
5	6	P50	5 112.0
6	1	P20	19 245.0
8	1		
9	0		
TOTAL NUMBER OF PITS: 13		TOTAL NUMBER OF MANHOLES: 0	
TOTAL NUMBER OF CONDUITS: 35		TOTAL LENGTH OF CONDUITS: 712.0	

SERVICE OFFSET TABLE

STREET NAME	NBN*		ELECTRICITY		PUBLIC LIGHT		GAS		WATER		SEWER	
	OFFSET	SIDE	OFFSET	SIDE	OFFSET	SIDE	OFFSET	SIDE	OFFSET	SIDE	OFFSET	SIDE
KARDELII PROM - OS LOT 61	190m	EAST	IE1 2.4m 0.9m BOK	EAST WEST	0.8m BOK 4.5m BL	EAST WEST	2.90m	EAST	3.30m	EAST	1.7m BOK	WEST
KARDELII PROM - OS LOT 1201 - 1204	100m	EAST	2.3m VERTICAL	EAST	10m BOK 4.4m BL	EAST	2.90m	EAST	3.30m	EAST	1.7m BOK	WEST
KARDELII PROM - OS LOT 1204 - 1207	4.60m	NORTH	5.10m	NORTH	15m BOK 3.5m BL	SOUTH	1.90m	SOUTH	2.30m	SOUTH	1.0m 4.1m	SOUTH NORTH
KARDELII PROM - OS LOT 1212 - 1219	130m	WEST	1.90m	WEST	0.8m BOK 4.2m BL	EAST	1.90m	EAST	2.40m	EAST	1.0m 0.8m	EAST WEST
JUMBUCK LANE	190m	WEST	IE2 4m	WEST	10m BOK 3.0m BL	WEST	1.90m	EAST	2.30m	EAST		
TARRNOOK DRIVE	190m	SOUTH	2.40m	SOUTH	0.8m BOK 3.2m BL	NORTH	1.90m	NORTH	2.40m	NORTH	100m	NORTH

* OFFSET FOR NBN OFFSIDE P2 PITS IS 2.80m FROM B/L UNLESS OTHERWISE STATED.

NOTE: THIS TABLE IS FOR DESIGN PURPOSES ONLY AND CANNOT BE USED FOR ASSET LOCATIONS.

STRICTLY CONFIDENTIAL

NBNC APPROVAL RECORD:

SIGNATURE	DATE
<input type="checkbox"/> DD	_____
<input type="checkbox"/> WD	_____
<input type="checkbox"/> AB	_____

QUALITY RECORD:

NBNC DISCLAIMER

THIS DOCUMENT HAS BEEN PREPARED SOLELY FOR THE USE OF NBNC LIMITED (ABN 86 136 533 741) FOR USE IN MAINTAINING NBNC FACILITIES. IT HAS NOT BEEN CREATED FOR ANY OTHER USE. IT SHOULD NOT BE SCALED TO LOCATE NBNC ASSETS. NO WARRANTY IS GIVEN THAT THE INFORMATION IS ACCURATE OR COMPLETE.



KEY PLAN

DRAWING TITLE: NBN PIT & PIPE AS-BUILT DESIGN
IMAGINE ESTATE STAGE 12
STRATHFIELDSAYE
19 LOTS

ENABLE#: 277108

STATE: VIC REGION:

FSA: SAM: ADA:

PROJECT No: STG-M000047075

CADREF No: G3NS4585

SCALE: N/A SHEET No. 1 OF 1 REV. C



REV	DATE	DRAFTER	DESCRIPTION	APPROVED
C	20.03.2023	GJ (G3NS)	AS-BUILT	SM (G3NS)
B	13.10.2022	GJ (G3NS)	DESIGN REVIEW COMPLETED BY NBN, DRAWING ISSUED FOR CONSTRUCTION	SM (G3NS)
A	30.09.2022	KT (G3NS)	INITIAL DESIGN OF INTENT	GJ (G3NS)