

COORDINATE SCHEDULE						
MARK	MGA CO-ORDINATES		CLASS	PU	METHOD	STATE
	EASTING	NORTHING				
PM 27088	298350-100	6002535-180	C	N/A	FROM SCIMS	FOUND
PM 80522	298580-831	6002527-020	C	N/A	FROM SCIMS	FOUND
SSM 16426	298800-795	6002221-738	B	0-02	FROM SCIMS	FOUND
SSM 40822	298398-304	6003073-876	C	N/A	FROM SCIMS	FOUND
SSM 55992	298841-509	6002324-540	C	N/A	FROM SCIMS	FOUND
SSM 196101	298994-318	6002463-327	D	N/A	TRAVERSE	FOUND
SSM 196102	299007-175	6002563-706	D	N/A	TRAVERSE	FOUND
SSM 197934	299201-198	6002579-862	D	N/A	TRAVERSE	FOUND
SSM 202811	298939-495	6002701-623	D	N/A	TRAVERSE	PLACED
SSM 202825	298952-613	6002868-133	D	N/A	TRAVERSE	PLACED

DATE OF SCIMS COORDINATES : 24-02-2023 MGA ZONE 55
MGA DATUM: GDA 2020 COMBINED SCALE FACTOR : 1-000083

GNSS VALIDATION SCHEDULE				
FROM	TO	GRID BEARING	DISTANCE	METHOD
SSM 16426	SSM 40822	334°43'02"	942-334	CORS NRTK
		334°43'02"	942-333	SCIMS
SSM 16426	PM 80522	324°13'25"	376-234	CORS NRTK
PM 80522	PM 27088	272°01'57"	230-865	CORS NRTK
		272°01'32"	230-856	SCIMS
PM 27088	SSM 40822	5°06'55"	540-795	CORS NRTK
		5°06'48"	540-803	SCIMS

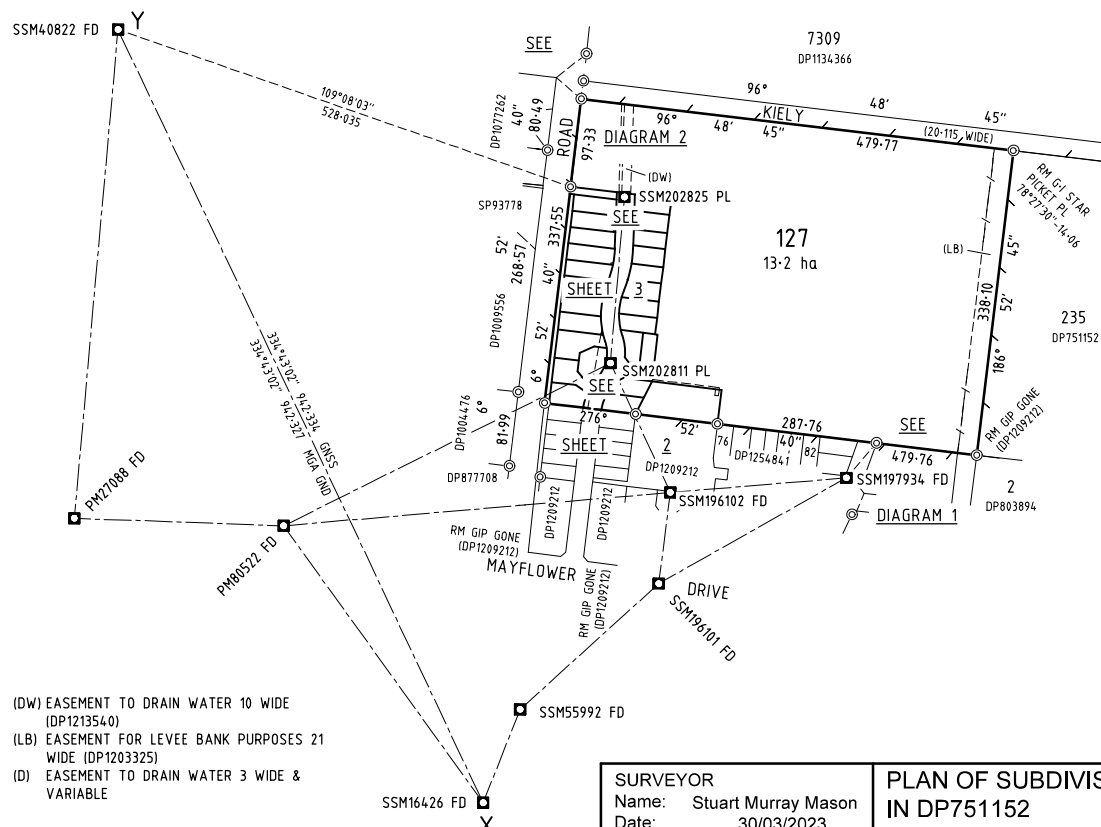
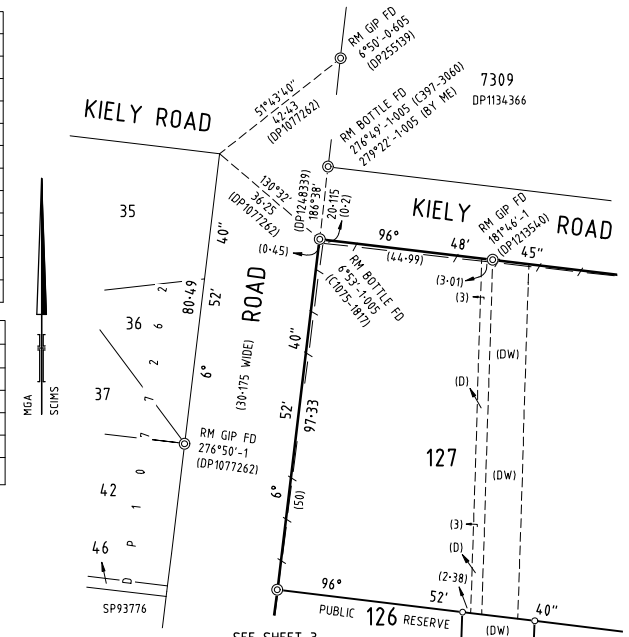
PERMANENT MARK CONNECTIONS				
FROM	TO	BEARING	DISTANCE	METHOD
SSM 16426	SSM 55992	21°36'18"	110-577	CORS NRTK GNSS
		21°36'20"	110-561	SCIMS
SSM 55992	SSM 196101	47°45'19"	206-397	CORS NRTK GNSS
SSM 196101	SSM 196102	7°17'56"	101-191	CADASTRAL TRAVERSE
SSM 196102	SSM 197934	85°14'24"	194-678	CORS NRTK GNSS
SSM 196101	SSM 197934	60°36'27"	237-425	CADASTRAL TRAVERSE
PM 80522	SSM 196102	85°04'47"	427-895	CORS NRTK GNSS
SSM 196102	SSM 202811	333°52'10"	153-659	CADASTRAL TRAVERSE
PM 80522	SSM 202811	64°02'04"	398-911	CORS NRTK GNSS
SSM 202811	SSM 202825	4°32'16"	167-556	CADASTRAL TRAVERSE
SSM 202825	SSM 40822	290°18'21"	591-14	CORS NRTK GNSS

HEIGHT DIFFERENCE SCHEDULE			
FROM	TO	HEIGHT DIFFERENCE	METHOD
PM 27088	SSM16426	-0-12	DIFFERENTIAL LEVELLING
SSM 16426	SSM 202811	-0-389	DIFFERENTIAL LEVELLING
SSM 202811	SSM 202825	+0-138	DIFFERENTIAL LEVELLING
SSM 202825	PM 27088	+0-371	DIFFERENTIAL LEVELLING

HEIGHT DATUM: AHD71

HEIGHT SCHEDULE					
MARK	AHD VALUE	CLASS	PU	HEIGHT DATUM VALIDATION	STATE
PM 27088	94-965	LC	0-09	SCIMS ADOPTED	FOUND
SSM 16426	94-845	B	N/A	FROM SCIMS - DATUM VALIDATION	FOUND
SSM 202811	94-456	D	N/A		PLACED
SSM 202825	94-594	D	N/A		PLACED

DATE OF SCIMS VALUES: 24-02-2023 HEIGHT DATUM: AHD71



(DW) EASEMENT TO DRAIN WATER 10 WIDE (DP1213540)
 (LB) EASEMENT FOR LEVEE BANK PURPOSES 21 WIDE (DP1203325)
 (D) EASEMENT TO DRAIN WATER 3 WIDE & VARIABLE

SURVEYOR
 Name: Stuart Murray Mason
 Date: 30/03/2023
 Reference: 308576SV00

PLAN OF SUBDIVISION OF LOT 232 IN DP751152

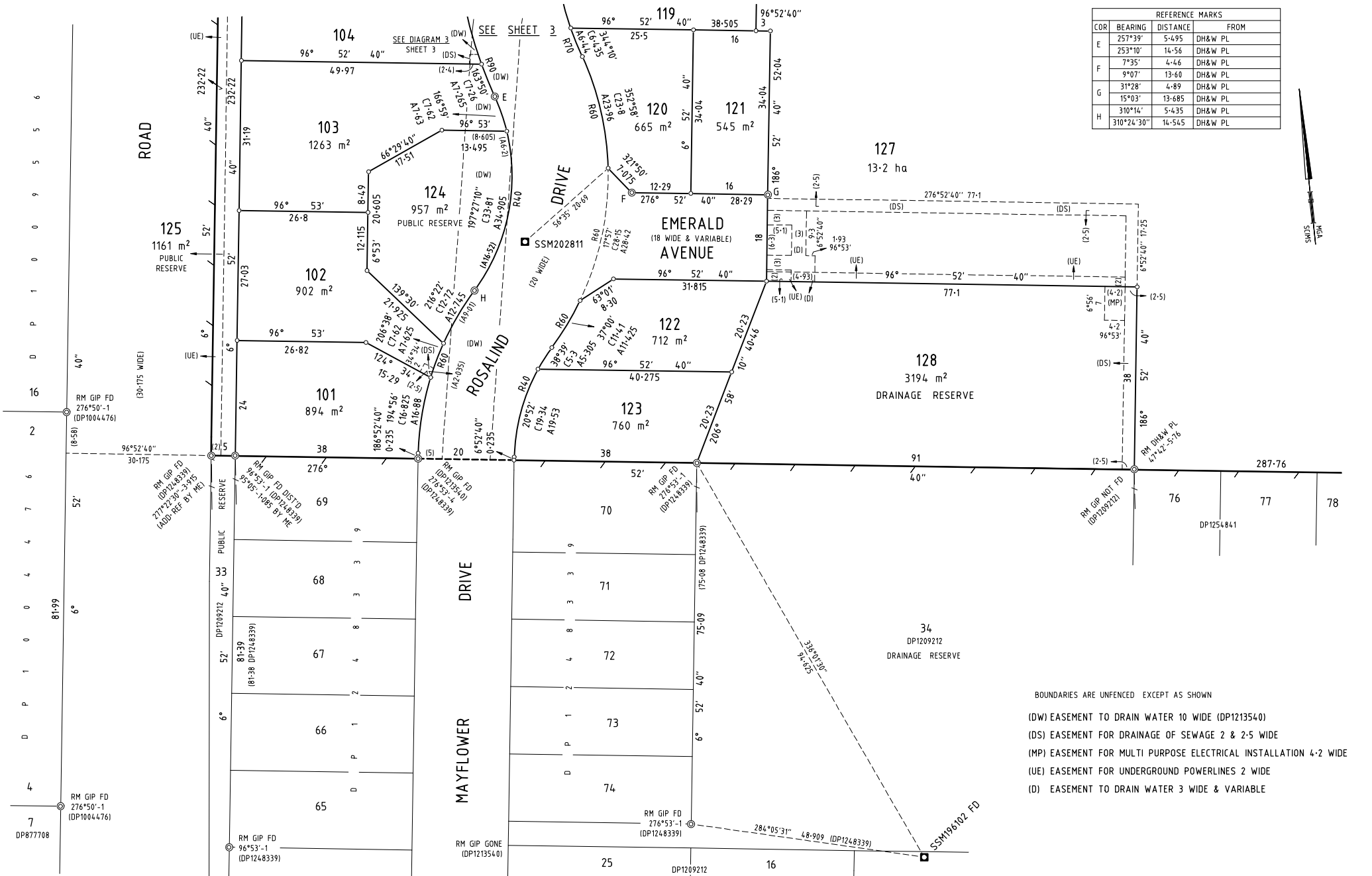
L.G.A.: MURRAY RIVER
 Locality: MOAMA
 Reduction Ratio: 1:4000
 Lengths are in metres.

REGISTERED
 28/04/2023

DP1281079

Reg:R483106 /Doc:DP.1281079 P /Rev:28-Apr-2023 /Prt:01-May-2023 03:30 /Seq:1 of 6
 © Office of the Registrar-General /Src:Portal /Ref:lrs:eplan-eplan FOR SURVEYORS USE ONLY

REFERENCE MARKS			
COR	BEARING	DISTANCE	FROM
E	257°39'	5.495	DH&W PL
	253°10'	14.56	DH&W PL
F	7°35'	4.46	DH&W PL
	9°07'	13.60	DH&W PL
G	31°28'	4.89	DH&W PL
	15°03'	13.685	DH&W PL
H	310°14'	5.435	DH&W PL
	310°24'30"	14.545	DH&W PL



BOUNDARIES ARE UNFENCED EXCEPT AS SHOWN


(DW) EASEMENT TO DRAIN WATER 10 WIDE (DP1213540)

(DS) EASEMENT FOR DRAINAGE OF SEWAGE 2 & 2.5 WIDE

(MP) EASEMENT FOR MULTI PURPOSE ELECTRICAL INSTALLATION 4.2 WIDE

(UE) EASEMENT FOR UNDERGROUND POWERLINES 2 WIDE

(D) EASEMENT TO DRAIN WATER 3 WIDE & VARIABLE

<p>SURVEYOR Name: Stuart Murray Mason Date: 30/03/2023 Reference: 308576SV00</p>	<p>PLAN OF SUBDIVISION OF LOT 232 IN DP751152</p>	<p>L.G.A.: MURRAY RIVER Locality: MOAMA Reduction Ratio: 1:500 Lengths are in metres.</p>	<p>REGISTERED  28/04/2023</p>	<p>DP1281079</p>
--------------------------------------------------------------------------------------------------------------------------------	-----------------------------------------------------------------------	----------------------------------------------------------------------------------------------------------------------------------	-------------------------------------------------------------------------------------------------------------------------	-------------------------

Reg:R483106 /Doc:DP_1281079_P /Rev:28-Apr-2023 03:30 /Seq:2 of 6
 © Office of the Registrar-General /Src:PORTAL /Ref:lrs:epian-epian FOR SURVEYORS USE ONLY

REFERENCE MARKS			
COR	BEARING	DISTANCE	FROM
A	301°38'	6-805	DH&W PL
A	282°36'30"	28-19	DH&W PL
B	295°23'	5-99	DH&W PL
B	280°30'	14-79	DH&W PL
C	279°32'	5-54	DH&W PL
C	273°35'	14-62	DH&W PL
D	294°17'	5-49	DH&W PL
D	291°40'	14-59	DH&W PL
E	257°39'	5-495	DH&W PL
E	253°10'	14-56	DH&W PL

BOUNDARIES ARE UNFENCED EXCEPT AS SHOWN

(DW) EASEMENT TO DRAIN WATER 10 WIDE (DP1213540)

(D) EASEMENT TO DRAIN WATER 3 WIDE & VARIABLE

(DS) EASEMENT FOR DRAINAGE OF SEWAGE 2 & 2-5 WIDE

(UE) EASEMENT FOR UNDERGROUND POWERLINES 2 WIDE

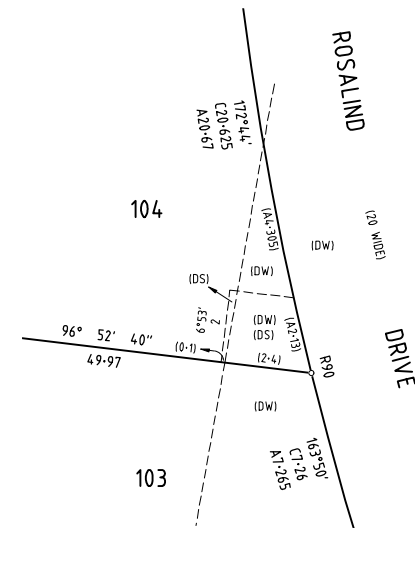


DIAGRAM 3
REDUCTION RATIO 1:100

SURVEYOR
Name: Stuart Murray Mason
Date: 30/03/23
Reference: 308576SV00

**PLAN OF SUBDIVISION OF LOT 232
IN DP751152**

L.G.A.: MURRAY RIVER
Locality: MOAMA
Reduction Ratio: 1:500
Lengths are in metres.

REGISTERED
28/04/2023

DP1281079

