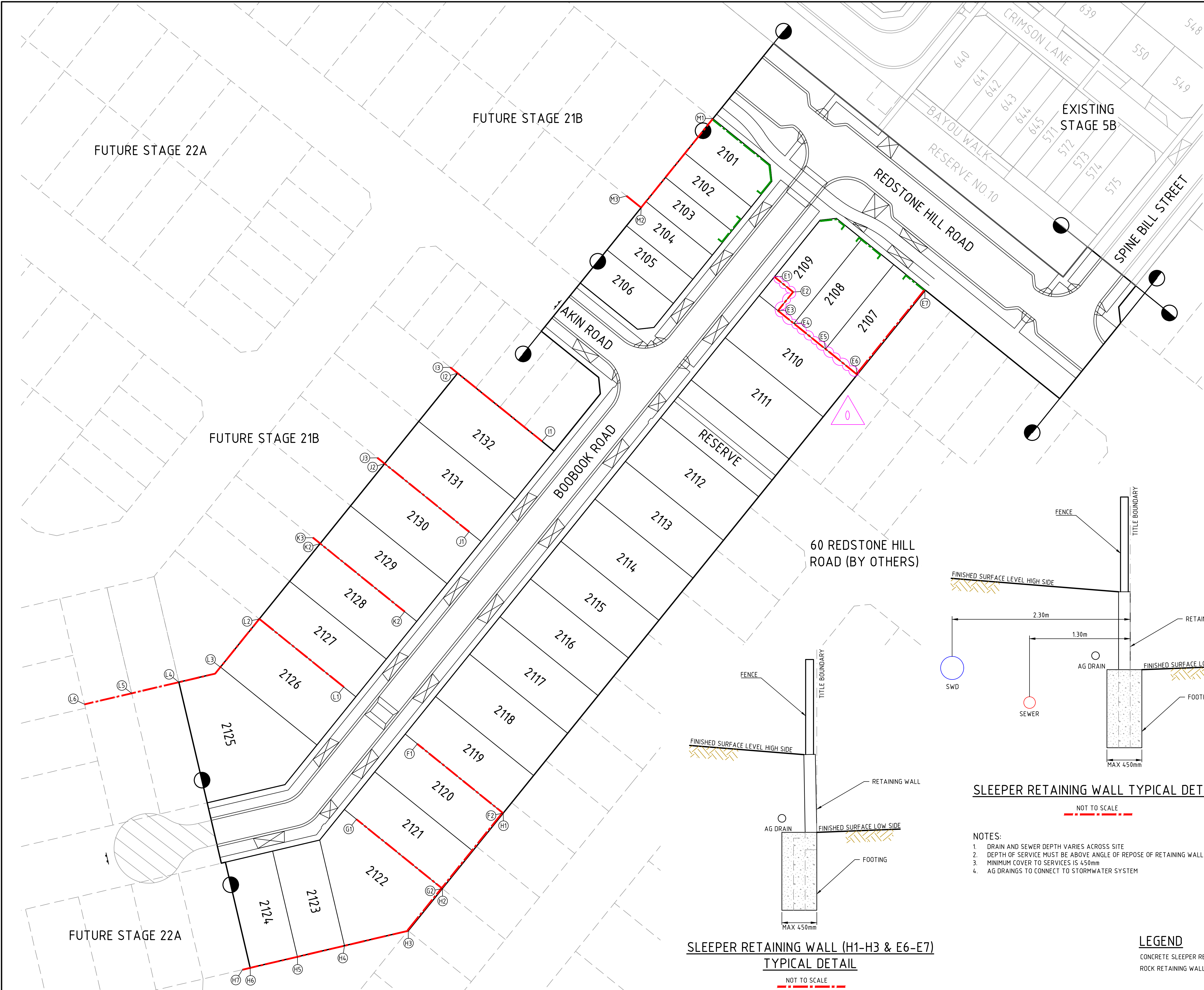


file name: 310827CR900.dwg, layout name: CR900, plotted by: Liliya Tran, plot date: 15/09/2024, 9:51 AM, Sheet 24 of 25, Sheets



SUBDIVISION ACT 1988

This approved engineering plan forms part of Planning Permit P23009.

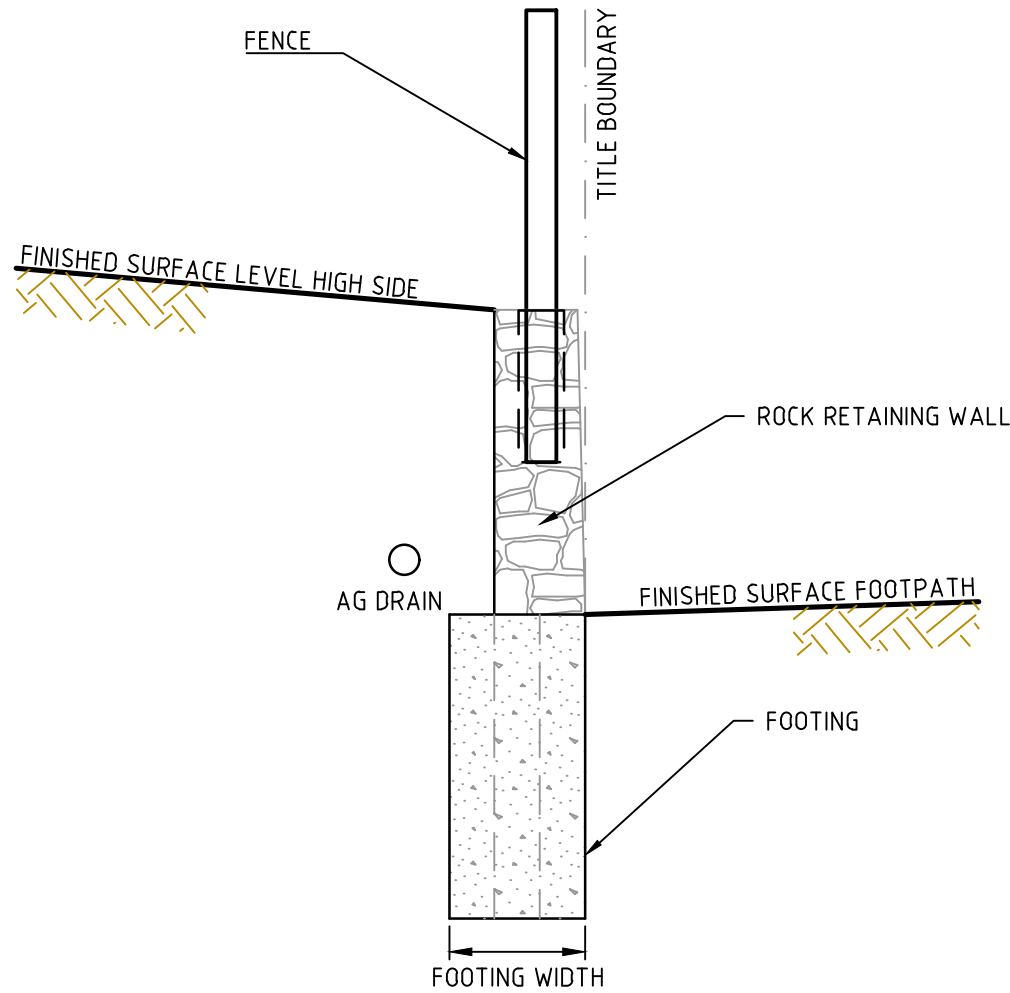
Date: 14/11/2024

Sheet 24 of 25

Signature for Responsible Authority

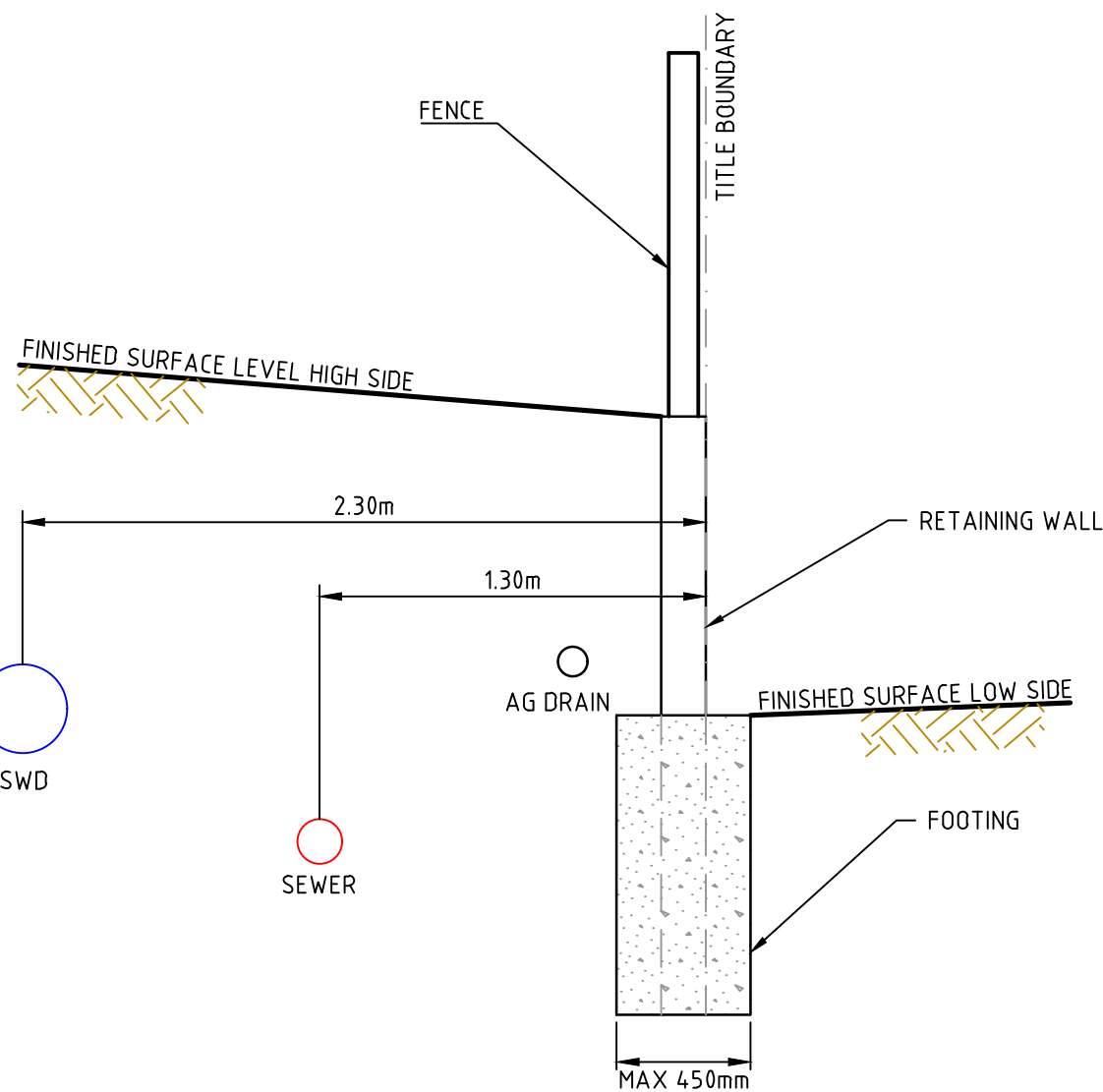
Nirpal Singh

MGA 2020
ZONE 55



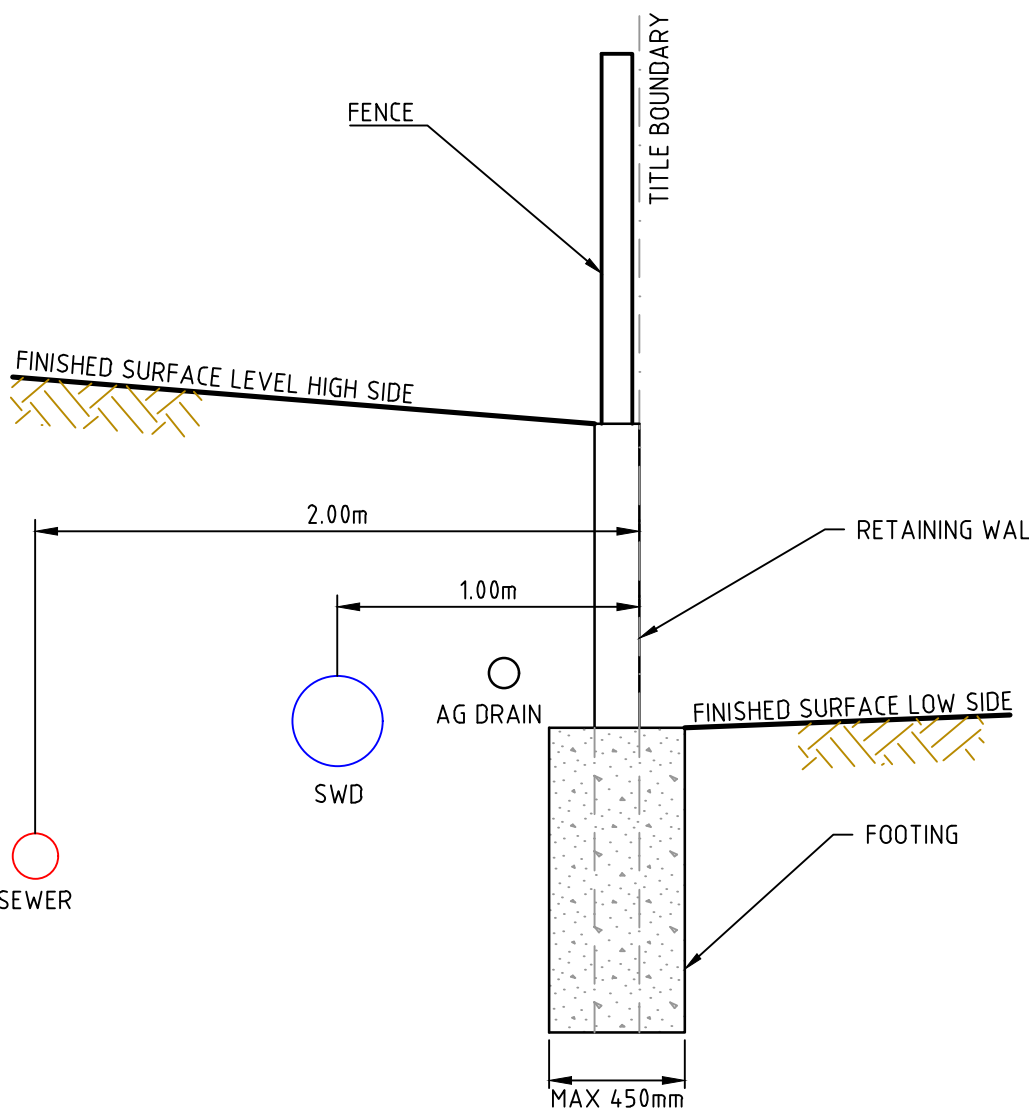
ROCK RETAINING WALL TYPICAL DETAIL

NOT TO SCALE



SLEEPER RETAINING WALL TYPICAL DETAIL

NOT TO SCALE



SLEEPER RETAINING WALL TYPICAL DETAIL

NOT TO SCALE

- NOTES:
- DRAIN AND SEWER DEPTH VARIES ACROSS SITE
 - DEPTH OF SERVICE MUST BE ABOVE ANGLE OF REPOSE OF RETAINING WALL FOOTING
 - MINIMUM COVER TO SERVICES IS 450mm
 - AG DRAINS TO CONNECT TO STORMWATER SYSTEM

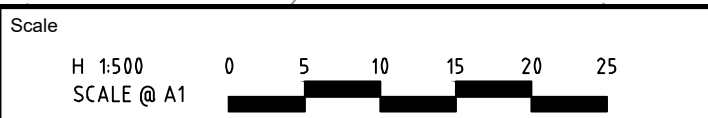
LEGEND

- CONCRETE SLEEPER RETAINING WALL
- ROCK RETAINING WALL

NOTE:
THE RETAINING WALL PLAN IS NOT PART OF THE SUBDIVISIONAL WORKS OR APPROVAL. IT IS SUBJECT TO SEPARATE APPROVAL, THIS SHEET IS SUPPLEMENTARY TO THE ENGINEERING DRAWINGS.

NOTE:
FOR LEVELS OF RETAINING WALLS FRONTING STREETS, REFER TO RELEVANT ROAD/STREET LONGITUDINAL SECTIONS

0	ISSUED FOR CONSTRUCTION	M.R	20/09/24
H	SLEEPER RETAINING WALL REFERENCE AMENDED	M.R	01/08/24
G	RETAINING WALL E ADDED	M.R	13/05/24
F	SLEEPER RETAINING WALL DETAIL ADDED	M.R	19/01/24
E	TYPICAL DETAILS ADDED	M.R	20/12/23
D	RETAINING WALL B AMENDED	M.R	23/10/23
C	RETAINING WALLS A, B & H AMENDED	M.R	11/09/23
B	ISSUED TO COUNCIL	M.R	26/07/23
Rev	Amendments	Approved	Date



© Spiire Australia Pty Ltd All Rights Reserved
This document is produced by Spiire Australia Pty Ltd solely for the benefit of and use by the client in accordance with the terms of the retainer. Spiire Australia Pty Ltd does not and shall not assume any responsibility or liability whatsoever to any third party arising out of any use or reliance by third party on the content of this document.



L6 414 LA TROBE STREET PO BOX 16084 MELBOURNE
VICTORIA 8007 AUSTRALIA T 61 3 9993 7888
spiire.com.au ABN 55 050 029 635



Designed
L. TRAN
Authorised
M. RANJANAN



Checked
W. ONG
Date
26/07/23

REDSTONE ESTATE
STAGE 21A
ROAD AND DRAINAGE
RETAINING WALLS - SHEET 1
HUME CITY COUNCIL
VILLAWOOD PROPERTIES

CONSTRUCTION 310827CR900

Rev
0

