

Ref: PG-3614-A, 2022-12-19, LTR (LOT 60) VER 1
Author: Ben Elsmore

19th December, 2022

CCA Winslow
Level 1, 85 Brandl Street
Eight Mile Plains QLD 4113

**CERTIFICATION OF LOT FILLING – LOT 60
THE ARBOUR DEVELOPMENT, COWELL DRIVE, BURLEIGH HEADS**

Pacific Geotech were commissioned by CCA Winslow (the Client) to undertake Level One earthworks inspection and testing in accordance with AS 3798-2007 “Guidelines on Earthworks for Commercial and Residential Development” for the proposed “The Arbour” residential development at Cowell Drive, Burleigh Heads.

Fill was placed on the above Lot as part of the bulk earthworks program which was undertaken between May, 2021 and December, 2022. This letter should be read in conjunction with the Level One report prepared for the site (Report Reference: PG-3614-A, 2022-11-06, LVR VER 1).

Based on the site inspection and results of field and laboratory testing, Pacific Geotech confirms that a minimum density ratio of 95% has been achieved in the structural fill which is compliant with the requirements of Table 5.1 of AS 3798-2007 and the project specification.

The fill areas are defined on the Peak Urban Project Drawing 20-0028-104-C “Bulk Earthworks Layout Plan Sheet 3 of 4”. A copy of this layout plan is attached to this report.

This letter specifically addresses the compaction of the fill material placed on the Lot only in accordance with AS 3798-2007 and specifically excludes any other geotechnical considerations associated with residential construction.

A Lot specific geotechnical investigation for the proposed future residence should be carried out by a suitably qualified geotechnical consultant prior to construction. Pacific Geotech can provide this service, if required.





Should you require clarification on any aspect of the above, please do not hesitate to contact our office.

Yours faithfully,

B. ELSMORE (RPEQ 19656)

For and on behalf of
PACIFIC GEOTECH PTY LTD

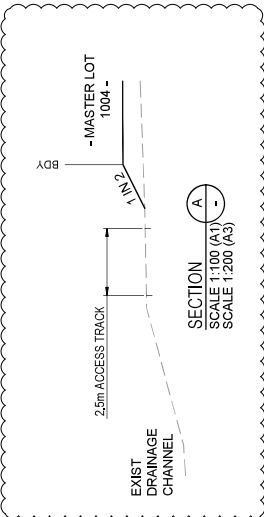
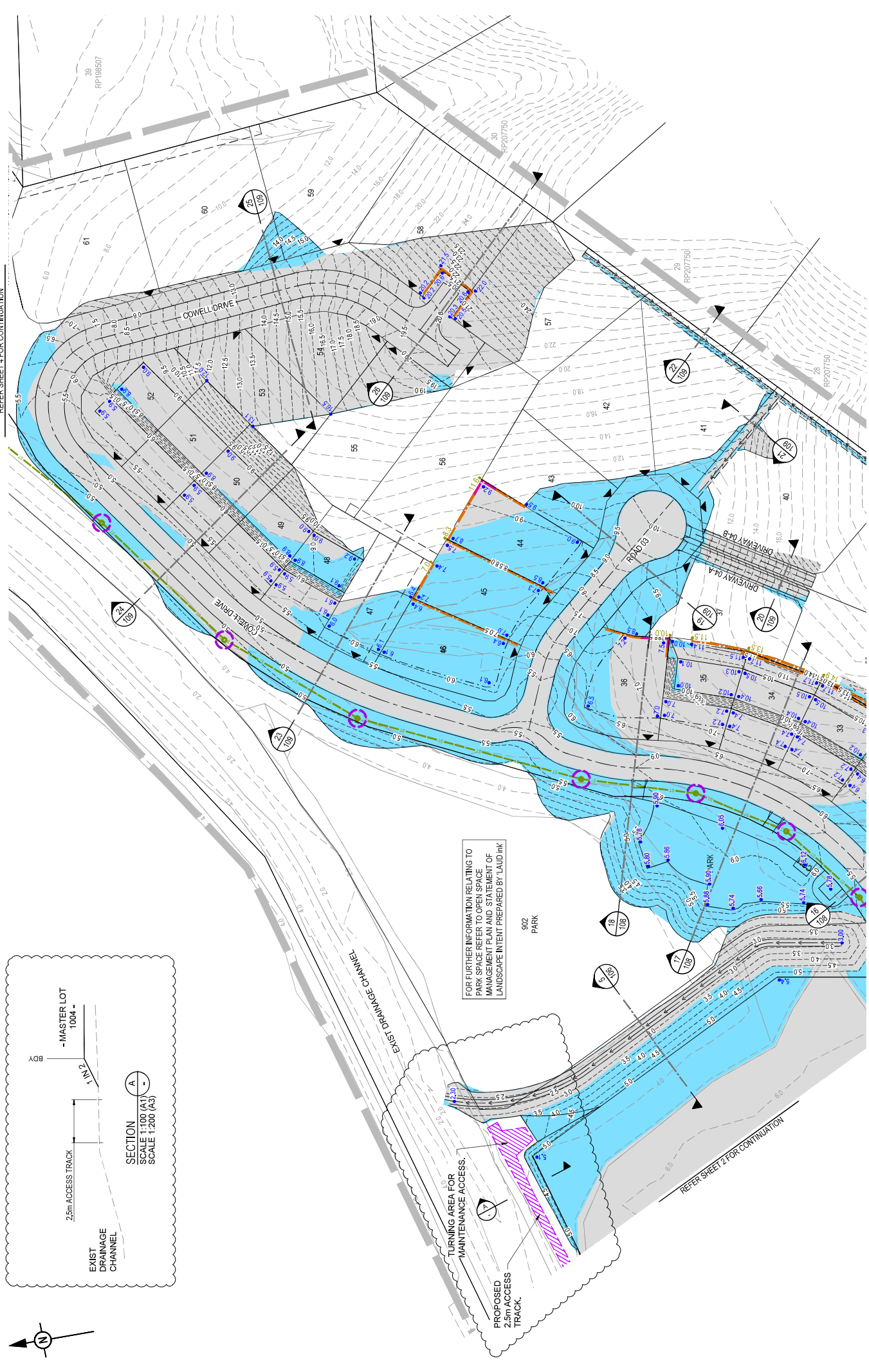
Encl. Earthworks Layout Plan



info@pacgeo.com.au
www.pacgeo.com.au



REFER SHEET 4 FOR CONTINUATION



FOR FURTHER INFORMATION RELATING TO PARK SPACE REFER TO OPEN SPACE MANAGEMENT PLAN AND STATEMENT OF LANDSCAPE INTENT PREPARED BY LAUD INK

TURNING AREA FOR MAINTENANCE ACCESS.

PROPOSED 2.5m ACCESS TRACK.

REFER SHEET 2 FOR CONTINUATION

REV	DATE	DESIGN	DRAWN	STATUS	DETAILS
A	22.06.21	TR	MS	TR	PROPOSED 2.5m ACCESS TRACK ADDED
B	22.06.21	TR	TR	TR	PARK EARTHWORKS AMENDED
C	22.06.22	TR	TR	TR	END OF DRAINAGE CHANNEL RE-ANCHORED, 2.5m ACCESS TRACK ADDED

ISSUED FOR CONSTRUCTION	ISSUED FOR CONSTRUCTION
DESIGNED BY DAN COLLINS	DESIGNED BY DAN COLLINS
PROJECT NO. RPEC 16931	PROJECT NO. RPEC 16931
PREPARED BY PEAKURBAN PTY LTD	PREPARED BY PEAKURBAN PTY LTD

CLIENT	BURLEIGH HEADS ESTATE PTY LTD	ASSOCIATED CONSULTANTS	SURVEYOR: GASSMAN DEVELOPMENT PERSPECTIVES
PROJECT NAME	THE ARBOUR	PROJECT NO.	20-0028
DRAWING TITLE	BULK EARTHWORKS LAYOUT PLAN SHEET 3 OF 4	DRAWING NO.	104
REVISION	COWELL DRIVE BURLEIGH HEADS	REVISION NO.	C



REFER SHEET 2 FOR CONTINUATION