

Ref: PG-3614-A, 2022-12-19, LTR (LOT 37) VER 1
Author: Ben Elsmore

19th December, 2022

CCA Winslow
Level 1, 85 Brandl Street
Eight Mile Plains QLD 4113

**CERTIFICATION OF LOT FILLING – LOT 37
THE ARBOUR DEVELOPMENT, COWELL DRIVE, BURLEIGH HEADS**

Pacific Geotech were commissioned by CCA Winslow (the Client) to undertake Level One earthworks inspection and testing in accordance with AS 3798-2007 “Guidelines on Earthworks for Commercial and Residential Development” for the proposed “The Arbour” residential development at Cowell Drive, Burleigh Heads.

Fill was placed on the above Lot as part of the bulk earthworks program which was undertaken between May, 2021 and December, 2022. This letter should be read in conjunction with the Level One report prepared for the site (Report Reference: PG-3614-A, 2022-11-06, LVR VER 1).

Based on the site inspection and results of field and laboratory testing, Pacific Geotech confirms that a minimum density ratio of 95% has been achieved in the structural fill which is compliant with the requirements of Table 5.1 of AS 3798-2007 and the project specification.

The fill areas are defined on the Peak Urban Project Drawing 20-0028-104-C “Bulk Earthworks Layout Plan Sheet 3 of 4”. A copy of this layout plan is attached to this report.

This letter specifically addresses the compaction of the fill material placed on the Lot only in accordance with AS 3798-2007 and specifically excludes any other geotechnical considerations associated with residential construction.

A Lot specific geotechnical investigation for the proposed future residence should be carried out by a suitably qualified geotechnical consultant prior to construction. Pacific Geotech can provide this service, if required.





Should you require clarification on any aspect of the above, please do not hesitate to contact our office.

Yours faithfully,

B. ELSMORE (RPEQ 19656)

For and on behalf of
PACIFIC GEOTECH PTY LTD

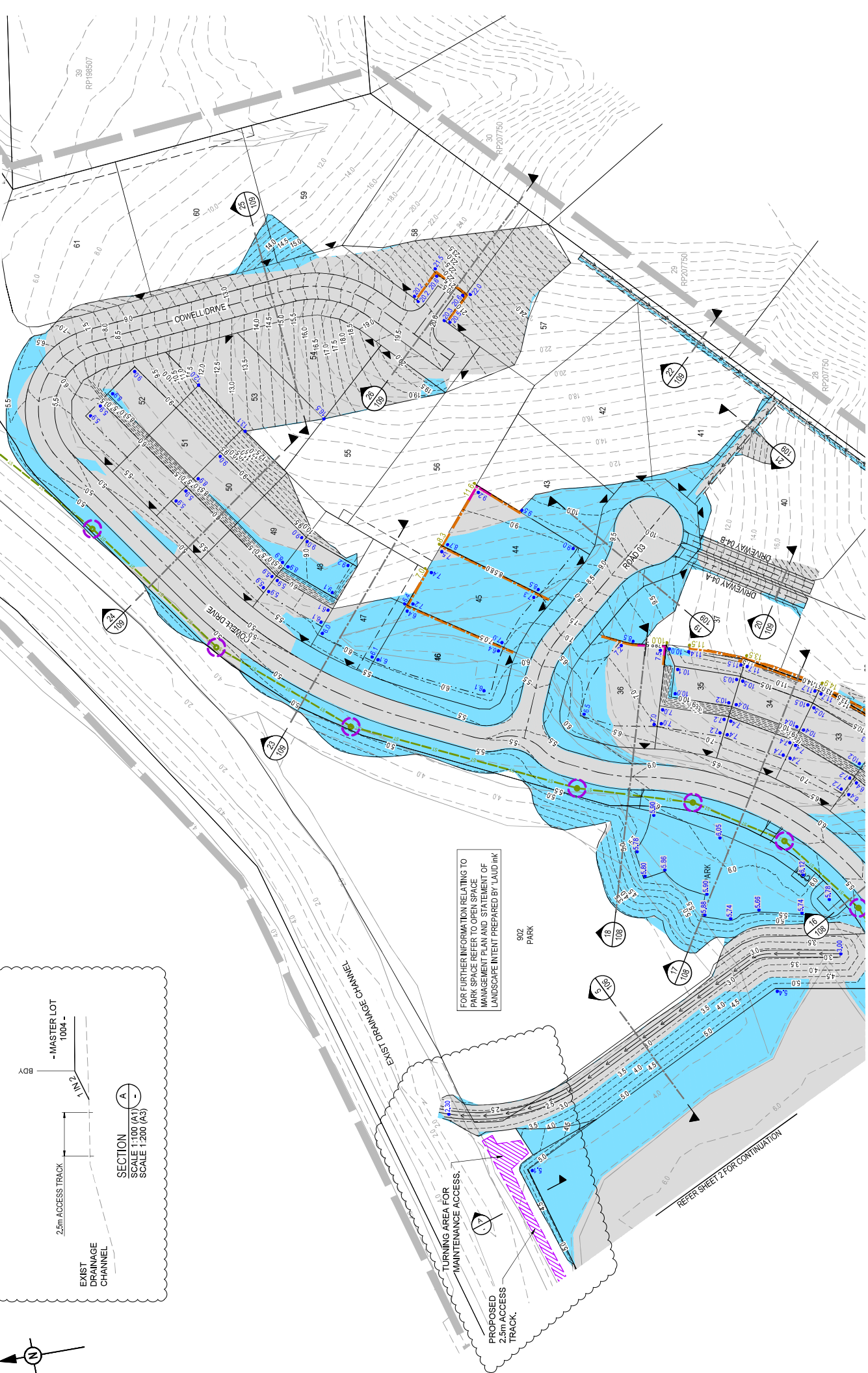
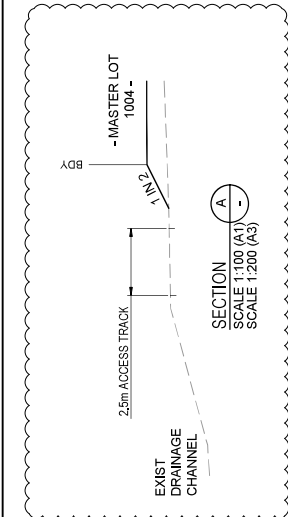
Encl. Earthworks Layout Plan



info@pacgeo.com.au
www.pacgeo.com.au



REFER SHEET 4 FOR CONTINUATION



REV	DATE	DESIGN	DRAWN	STATUS	DETAILS
A	22.06.21	TR	MS	TR	ISSUED FOR CONSTRUCTION
B	22.06.21	TR	TR	TR	FOR FURTHER INFORMATION RELATING TO PARK SPACE REFER TO OPEN SPACE MANAGEMENT PLAN AND STATEMENT OF LANDSCAPE INTENT PREPARED BY LAUD INK
C	22.06.22	TR	TR	TR	END OF DRAINAGE CHANNEL RE-ANCHORED, 2.5m ACCESS TRACK ADDED

ISSUED FOR CONSTRUCTION	ISSUED FOR CONSTRUCTION	ISSUED FOR CONSTRUCTION
DRAWN BY: DAN COLLINS	DRAWN BY: DAN COLLINS	DRAWN BY: DAN COLLINS
CHECKED BY: RFECS 16931	CHECKED BY: RFECS 16931	CHECKED BY: RFECS 16931
DESIGNED BY: DAN COLLINS	DESIGNED BY: DAN COLLINS	DESIGNED BY: DAN COLLINS
PROJECT NO: 20-0028	PROJECT NO: 20-0028	PROJECT NO: 20-0028
DRAWING NO: 104	DRAWING NO: 104	DRAWING NO: 104
REVISION NO: C	REVISION NO: C	REVISION NO: C

CLIENT: BURLIGH HEADS ESTATE PTY LTD	CLIENT: BURLIGH HEADS ESTATE PTY LTD	CLIENT: BURLIGH HEADS ESTATE PTY LTD
ASSOCIATED CONSULTANTS: SURVEYOR: CASSMAN DEVELOPMENT PERSPECTIVES	ASSOCIATED CONSULTANTS: SURVEYOR: CASSMAN DEVELOPMENT PERSPECTIVES	ASSOCIATED CONSULTANTS: SURVEYOR: CASSMAN DEVELOPMENT PERSPECTIVES
PROJECT NAME: THE ARBOUR	PROJECT NAME: THE ARBOUR	PROJECT NAME: THE ARBOUR
DRAWING TITLE: BULK EARTHWORKS LAYOUT PLAN SHEET 3 OF 4	DRAWING TITLE: BULK EARTHWORKS LAYOUT PLAN SHEET 3 OF 4	DRAWING TITLE: BULK EARTHWORKS LAYOUT PLAN SHEET 3 OF 4



REFER SHEET 2 FOR CONTINUATION

REFER SHEET 2 FOR CONTINUATION

REFER SHEET 2 FOR CONTINUATION

REFER SHEET 2 FOR CONTINUATION

REFER SHEET 2 FOR CONTINUATION

REFER SHEET 2 FOR CONTINUATION

REFER SHEET 2 FOR CONTINUATION

REFER SHEET 2 FOR CONTINUATION