

WARNING
 BEWARE OF UNDERGROUND SERVICES
 THE LOCATION OF UNDERGROUND SERVICES ARE APPROXIMATE ONLY AND THEIR EXACT POSITION SHOULD BE PROVEN ON SITE. NO GUARANTEE IS GIVEN THAT ALL EXISTING SERVICES ARE SHOWN.

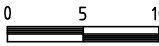
6		
5		
4		
3		
2		
1	Original Issue	27/7/2018
0	Draft	15/1/2018
Ver	Revision Description	Date

Designed	Checked
R. Dawborn	N. Bowe
Jul 2018	Jul 2018
Approved	

Notes/Legend
 PLEASE NOTE THAT CONTOURS SHOWN ON PLAN INDICATE THE APPROXIMATE FINISHED SURFACE. CONTOUR INTERVAL 0.1m

TERRACO
 Civil Engineers
 Project Managers
 Development Consultants

Terraco P/L
 ABN 12 681 695 776
 Corner Jewell Court
 & Rowena Street
 Bendigo Vic 3550
 Ph: 03 5442 5799
 Fax: 03 5441 5506
 E: info@terraco.com.au

Scale (m) 
 All lengths are in metres
 and all levels are to Australian Height Datum
 (Original Sheet Size is A3)

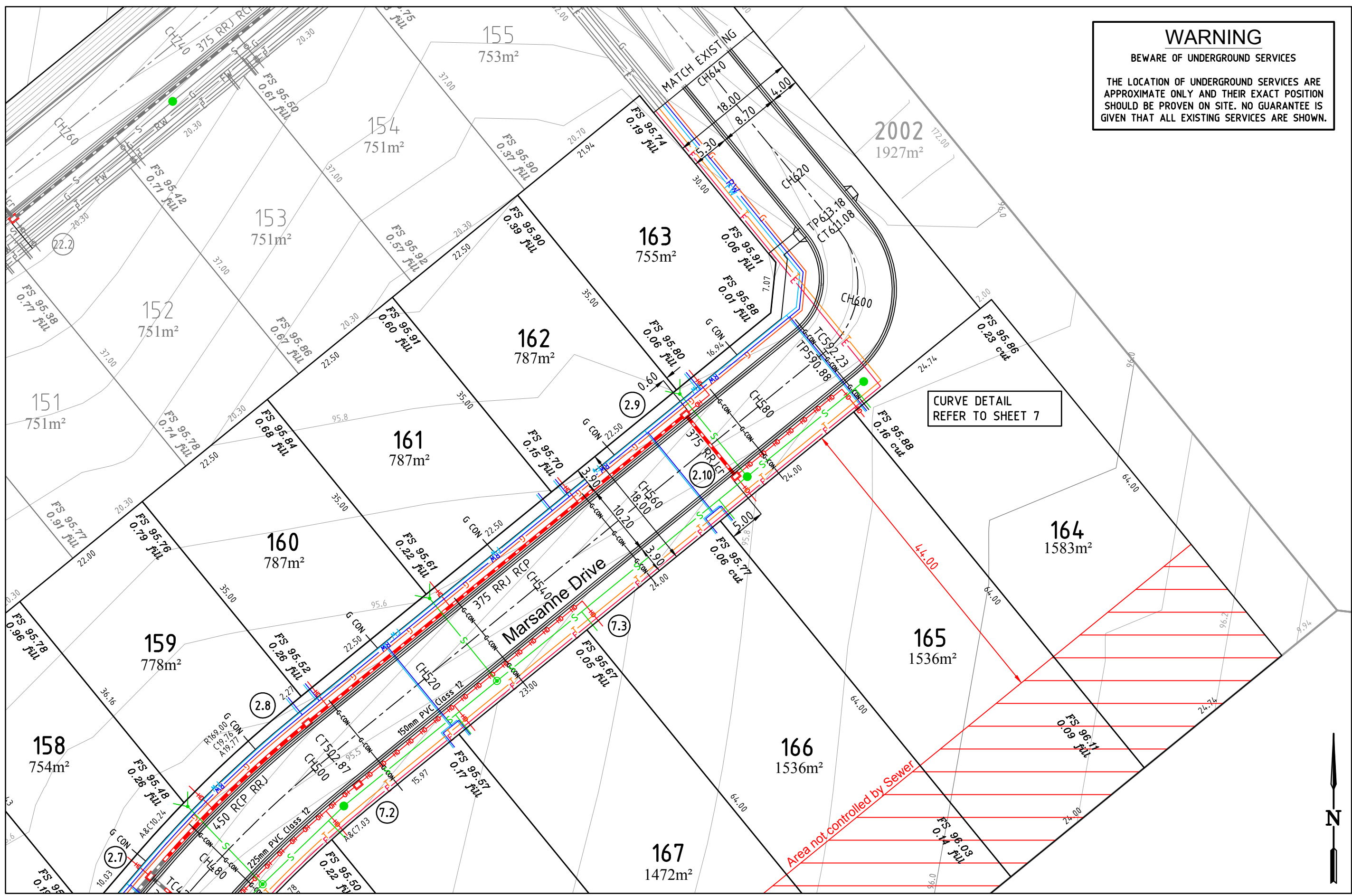
Drawing file:	LTO Ref:
17185 Layout.dwg	-

Murray River Council - Moama
Villawood Properties Pty Ltd
 Lakeview Estate - Stage 8
 Layout Plan

Council Ref:	Our Ref:	Version	Sheet
DA 173/11	17185	1	5 of 19

WARNING
 BEWARE OF UNDERGROUND SERVICES
 THE LOCATION OF UNDERGROUND SERVICES ARE APPROXIMATE ONLY AND THEIR EXACT POSITION SHOULD BE PROVEN ON SITE. NO GUARANTEE IS GIVEN THAT ALL EXISTING SERVICES ARE SHOWN.

CURVE DETAIL
 REFER TO SHEET 7



6		
5		
4		
3		
2		
1	Original Issue	27/7/2018
0	Draft	15/1/2018
Ver	Revision Description	Date

Designed	R. Dawborn	Checked	N. Bowe
	Jul 2018		Jul 2018
Approved			

Notes/Legend
 PLEASE NOTE THAT CONTOURS SHOWN ON PLAN INDICATE THE APPROXIMATE FINISHED SURFACE. CONTOUR INTERVAL 0.1m

TERRACO
 Civil Engineers
 Project Managers
 Development Consultants

Terraco P/L
 ABN 12 681 695 776
 Corner Jewell Court
 & Rowena Street
 Bendigo Vic 3550
 Ph: 03 5442 5799
 Fax: 03 5441 5506
 E: info@terraco.com.au

Scale (m) H 1:500
 All lengths are in metres and all levels are to Australian Height Datum (Original Sheet Size is A3)

Drawing file:	LTO Ref:
17185 Layout.dwg	-

Murray River Council - Moama
 Villawood Properties Pty Ltd
 Lakeview Estate - Stage 8
 Layout Plan 2

Council Ref:	Our Ref:	Version	Sheet
DA 173/11	17185	1	6 of 19