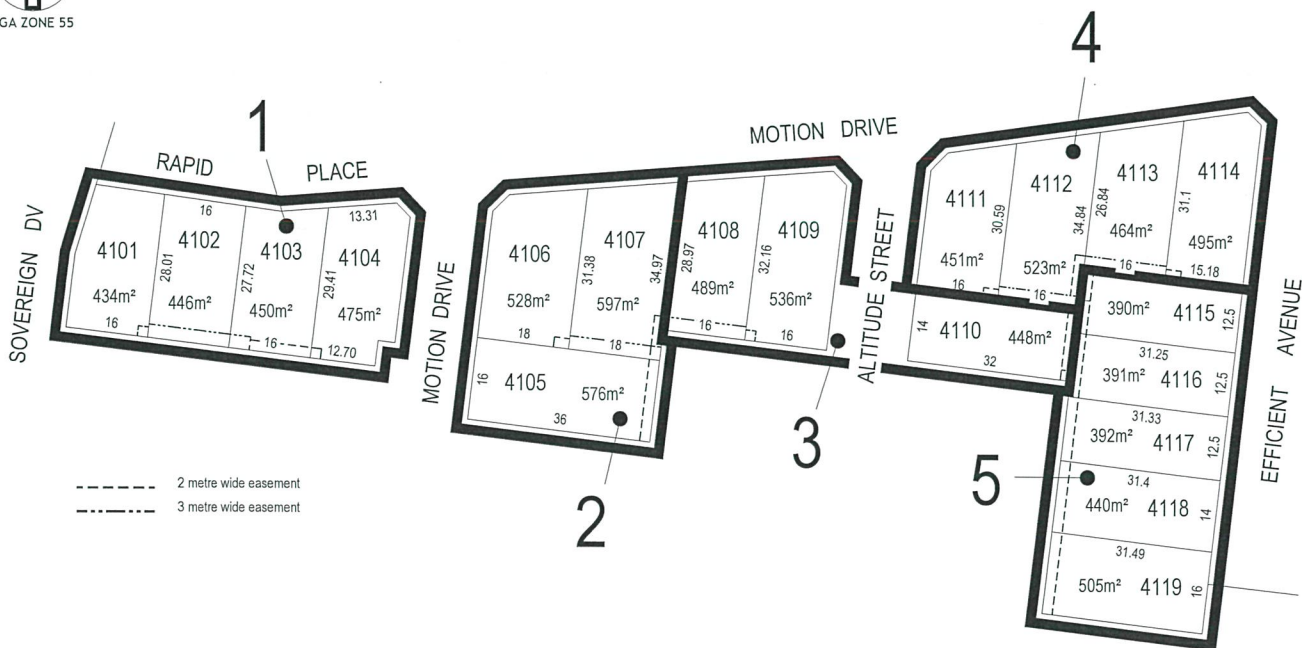




MGA ZONE 55



KEY TO SHEETS

REFER TO SHEETS
1 TO 6
FOR DETAIL

ARMSTRONG Mt DUNED

BUILDING ENVELOPE PLAN
STAGE 41

November 2018
Version: C

GREATER GEELONG CITY COUNCIL
PLANNING & ENVIRONMENT ACT 1987
GREATER GEELONG PLANNING SCHEME
Endorsed Plan referred to in Permit No. 496/2019/H
STAGE 41 BUILDING ENVELOPES PGS 1-7
Signed *[Signature]* Date 15/4/19
FOR AND ON BEHALF OF THE GREATER GEELONG
CITY COUNCIL AS RESPONSIBLE AUTHORITY
NOTE: THIS IS NOT A BUILDING APPROVAL



NOTATIONS

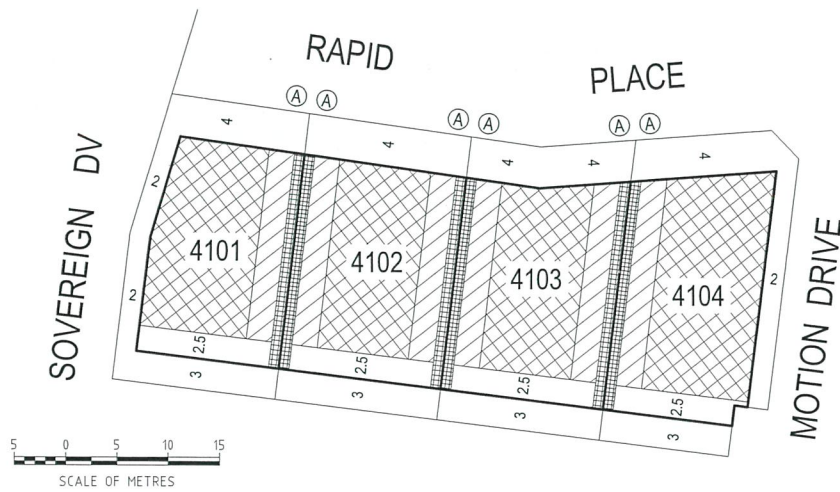
	Single Storey Building Envelope (height not exceeding 3.6m)
	Overlooking Zone - Habitable room windows/raised open spaces are a source of overlooking
	Non Overlooking Zone - Habitable room windows/raised open spaces are not a source of overlooking
	Building to Boundary Zone

(A)

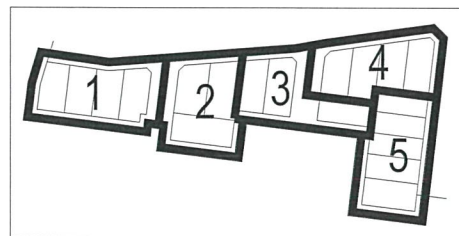
4105

3

Building Envelope Boundary Profile Type
Lot number
Setback minimum required (if 0, a building can be constructed on the boundary provided that the building height and length requirements are met)



This Building Envelope Plan is to be read in conjunction with the associated Building Envelope Profiles and Design Guidelines.
The registered proprietor/s of the lot are required to build in accordance with building envelopes shown hereon and in the "Profile Diagrams" in sheet 6.
Detailed design of roads, driveways and footpaths is provided in the relevant Engineering Plans.
Detailed design of landscape works is provided in the relevant Landscape Plans.
All details subject to City of Greater Geelong Council approval.



KEY TO SHEETS

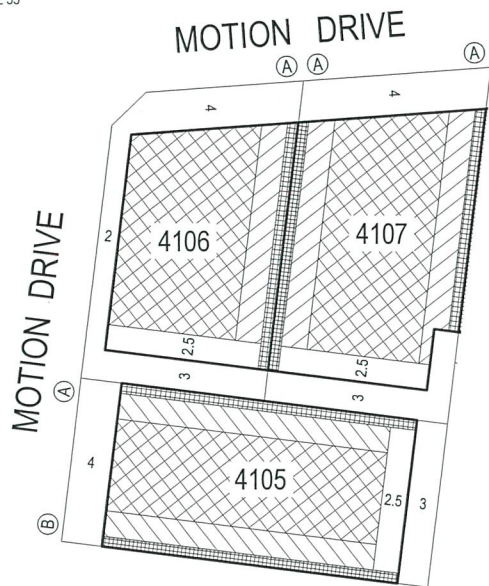
ARMSTRONG Mt DUNEED

BUILDING ENVELOPE PLAN STAGE 41

41/1
stage sheet

Sheet 1 of 6

November 2018
Version: C



NOTATIONS

	Single Storey Building Envelope (height not exceeding 3.6m)
	Overlooking Zone - Habitable room windows/raised open spaces are a source of overlooking
	Non Overlooking Zone - Habitable room windows/raised open spaces are not a source of overlooking
	Building to Boundary Zone

(A)

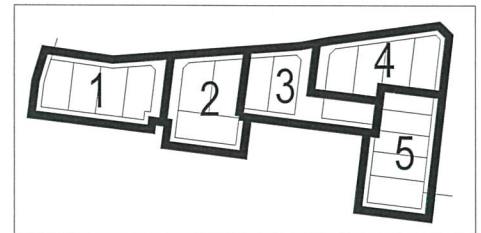
Building Envelope Boundary Profile Type

4105

Lot number

3

Setback minimum required (if 0, a building can be constructed on the boundary provided that the building height and length requirements are met)



KEY TO SHEETS

This Building Envelope Plan is to be read in conjunction with the associated Building Envelope Profiles and Design Guidelines.

The registered proprietor/s of the lot are required to build in accordance with building envelopes shown hereon and in the "Profile Diagrams" in sheet 6.

Detailed design of roads, driveways and footpaths is provided in the relevant Engineering Plans.

Detailed design of landscape works is provided in the relevant Landscape Plans.

All details subject to City of Greater Geelong Council approval.



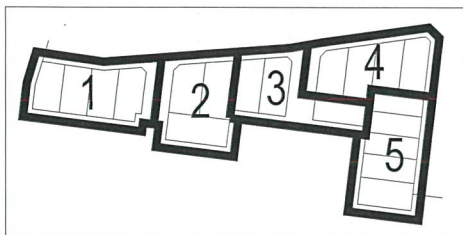
ARMSTRONG Mt DUNEED

**BUILDING ENVELOPE PLAN
STAGE 41**

41/2
stage sheet

Sheet 2 of 6

November 2018
Version: C



KEY TO SHEETS

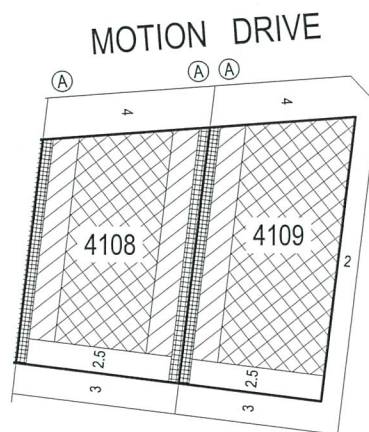
This Building Envelope Plan is to be read in conjunction with the associated Building Envelope Profiles and Design Guidelines.

The registered proprietor/s of the lot are required to build in accordance with building envelopes shown hereon and in the "Profile Diagrams" in sheet 6.

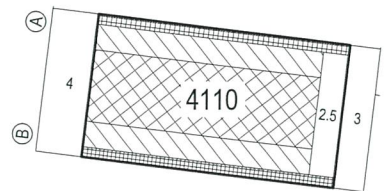
Detailed design of roads, driveways and footpaths is provided in the relevant Engineering Plans.

Detailed design of landscape works is provided in the relevant Landscape Plans.

All details subject to City of Greater Geelong Council approval.



ALTITUDE STREET



NOTATIONS

	Single Storey Building Envelope (height not exceeding 3.6m)
	Overlooking Zone - Habitable room windows/raised open spaces are a source of overlooking
	Non Overlooking Zone - Habitable room windows/raised open spaces are not a source of overlooking
	Building to Boundary Zone

(A)

4105

3

Building Envelope Boundary Profile Type

Lot number

Setback minimum required (if 0, a building can be constructed on the boundary provided that the building height and length requirements are met)

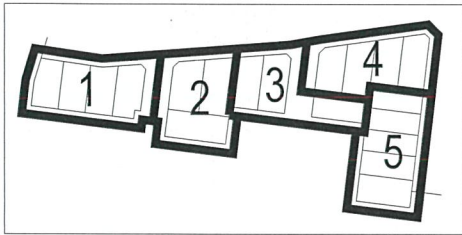
ARMSTRONG Mt DUNEED

**BUILDING ENVELOPE PLAN
STAGE 41**

41/3
stage sheet

Sheet 3 of 6

November 2018
Version: C



KEY TO SHEETS

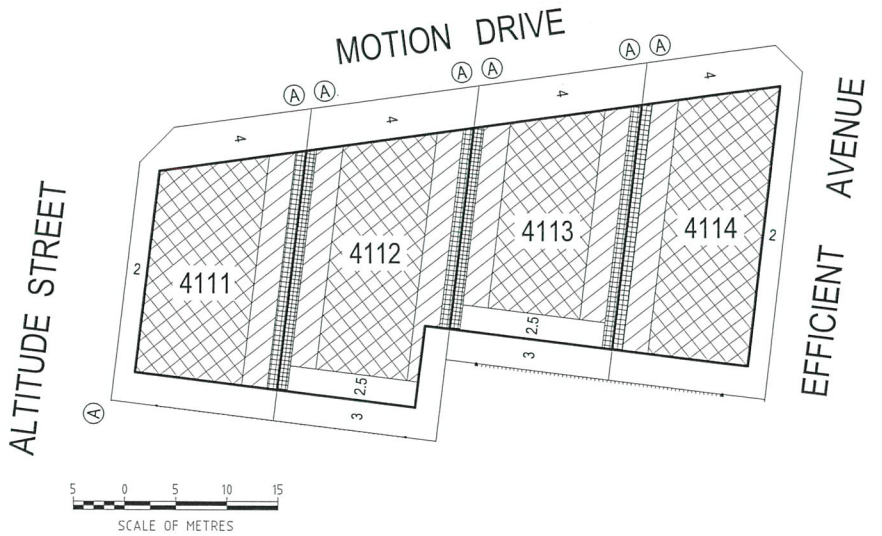
This Building Envelope Plan is to be read in conjunction with the associated Building Envelope Profiles and Design Guidelines.

The registered proprietor/s of the lot are required to build in accordance with building envelopes shown hereon and in the "Profile Diagrams" in sheet 6.

Detailed design of roads, driveways and footpaths is provided in the relevant Engineering Plans.

Detailed design of landscape works is provided in the relevant Landscape Plans.

All details subject to City of Greater Geelong Council approval.



NOTATIONS

	Single Storey Building Envelope (height not exceeding 3.6m)
	Overlooking Zone - Habitable room windows/raised open spaces are a source of overlooking
	Non Overlooking Zone - Habitable room windows/raised open spaces are not a source of overlooking
	Building to Boundary Zone

Ⓐ
4105
3

Building Envelope Boundary Profile Type

Lot number

Setback minimum required (if 0, a building can be constructed on the boundary provided that the building height and length requirements are met)

ARMSTRONG Mt DUNEED

BUILDING ENVELOPE PLAN STAGE 41

41 / 4
stage sheet

Sheet 4 of 6

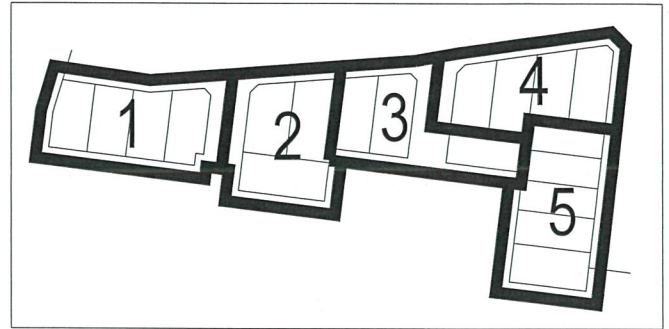
November 2018
Version: C



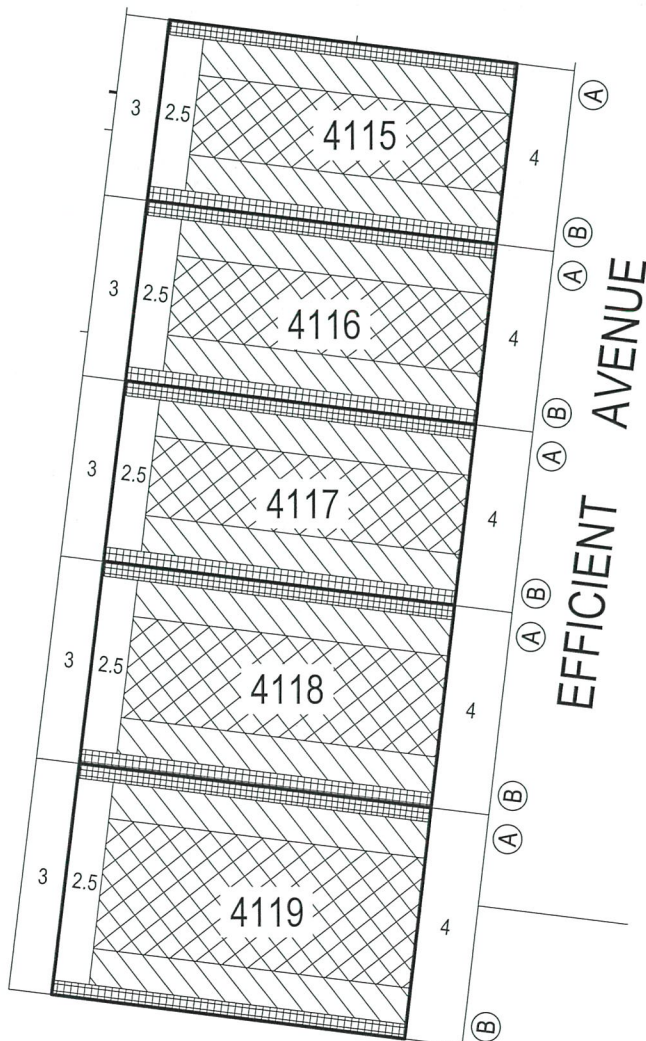
Detailed design of roads, driveways and footpaths is provided in the relevant Engineering Plans.

Detailed design of landscape works is provided in the relevant Landscape Plans.

All details subject to City of Greater Geelong Council approval.



KEY TO SHEETS



NOTATIONS

- Single Storey Building Envelope (height not exceeding 3.6m)
- Overlooking Zone - Habitable room windows/raised open spaces are a source of overlooking
- Non Overlooking Zone - Habitable room windows/raised open spaces are not a source of overlooking
- Building to Boundary Zone)
- Building Envelope Boundary Profile Type
- 4105 Lot number
- 3 Setback minimum required (if 0, a building can be constructed on the boundary provided that the building height and length requirements are met)

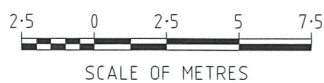
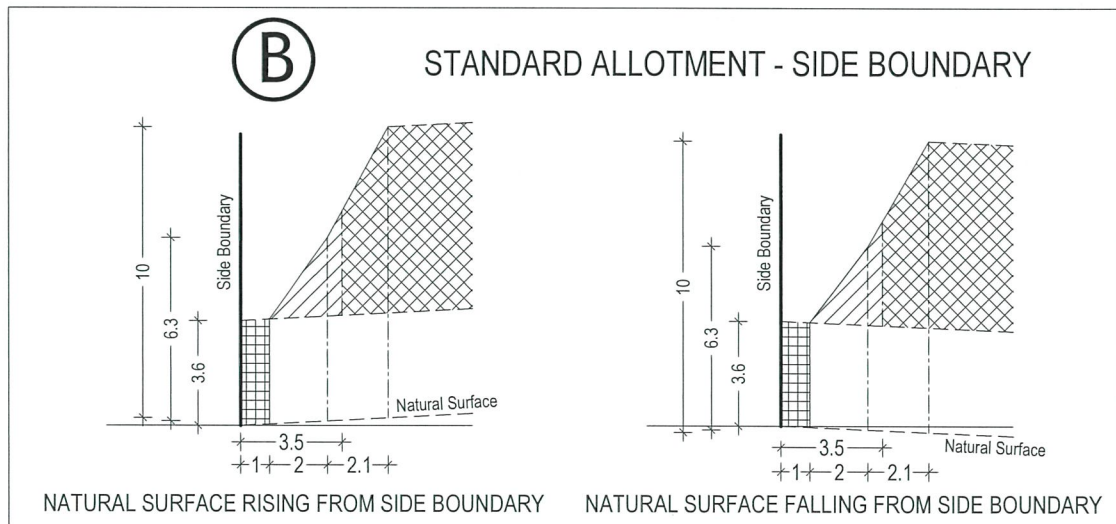
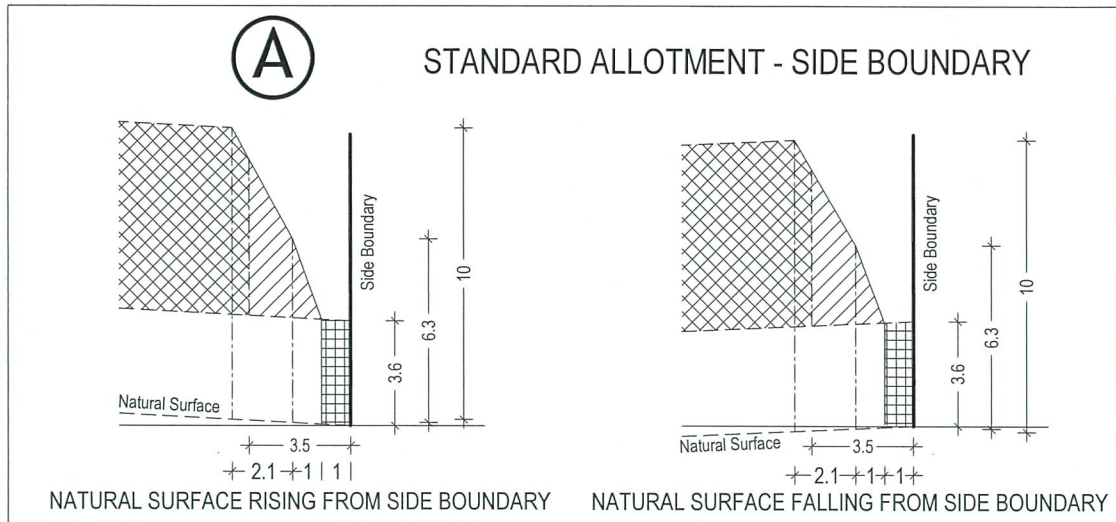
This Building Envelope Plan is to be read in conjunction with the associated Building Envelope Profiles and Design Guidelines.
The registered proprietor/s of the lot are required to build in accordance with building envelopes shown hereon and in the "Profile Diagrams" in sheet 6.

ARMSTRONG Mt DUNED

BUILDING ENVELOPE PLAN STAGE 41

41 / 5
stage sheet





ARMSTRONG Mt DUNEED

BUILDING ENVELOPE PROFILES STAGE 41

41 / 6
stage sheet

Single Storey Building Envelope

Overlooking Zone
Habitable room windows/raised open spaces are a source of overlooking



Non Overlooking Zone
Habitable room windows/raised open spaces are not a source of overlooking



Building to Boundary Zone

Sheet 6 of 6

November 2018
Version: C