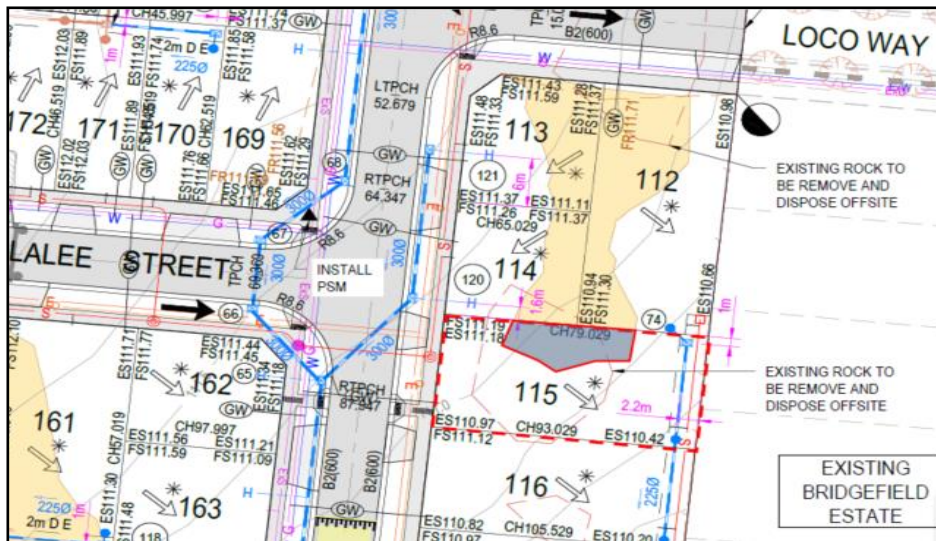




5/16 Network Drive, Truganina VIC 3029
 PH: 03 8754 8325
 E: info@ayassociates.com.au W: www.ayassociates.com.au

**CERTIFICATE OF CONTROLLED FILLING
 EARTHWORKS OPERATIONS**
 (AS3789-2007– LEVEL 1 INSPECTION & TESTING)
Williams Walk Estate Stage 2

Lot 115



- Specified Lot Area
- Approximate extent and depth of controlled filling of 200mm.
 Level 1 Certification is limited to within this area.

Filling in the areas defined above has been carried out to meet the requirements of the specification and Level 1 Certification as per AS3798 – 2007 “Guidelines on Earthworks for Commercial and Residential Developments”. For more details on the filling works, please refer to Level 1 Inspection & Testing Report – 1120 0274-1-Rev0 dated 7th June 2022.

A geotechnical site investigation and foundation design for the specific ground conditions should be carried out on this lot prior to building when house type and location are known.

Alvin Tan
 (BE Civil and Infrastructure), MIEAust
 Senior Geotechnical Engineer
 Mob: 0449 288 338
 Email: alvin@ayassociates.com.au



ENGINEERS
 AUSTRALIA
 Professional Engineer
 MEMBER