

STAGE 7 BUILDING ENVELOPES





FOR



STAGE 7 BUILDING ENVELOPES

Legend

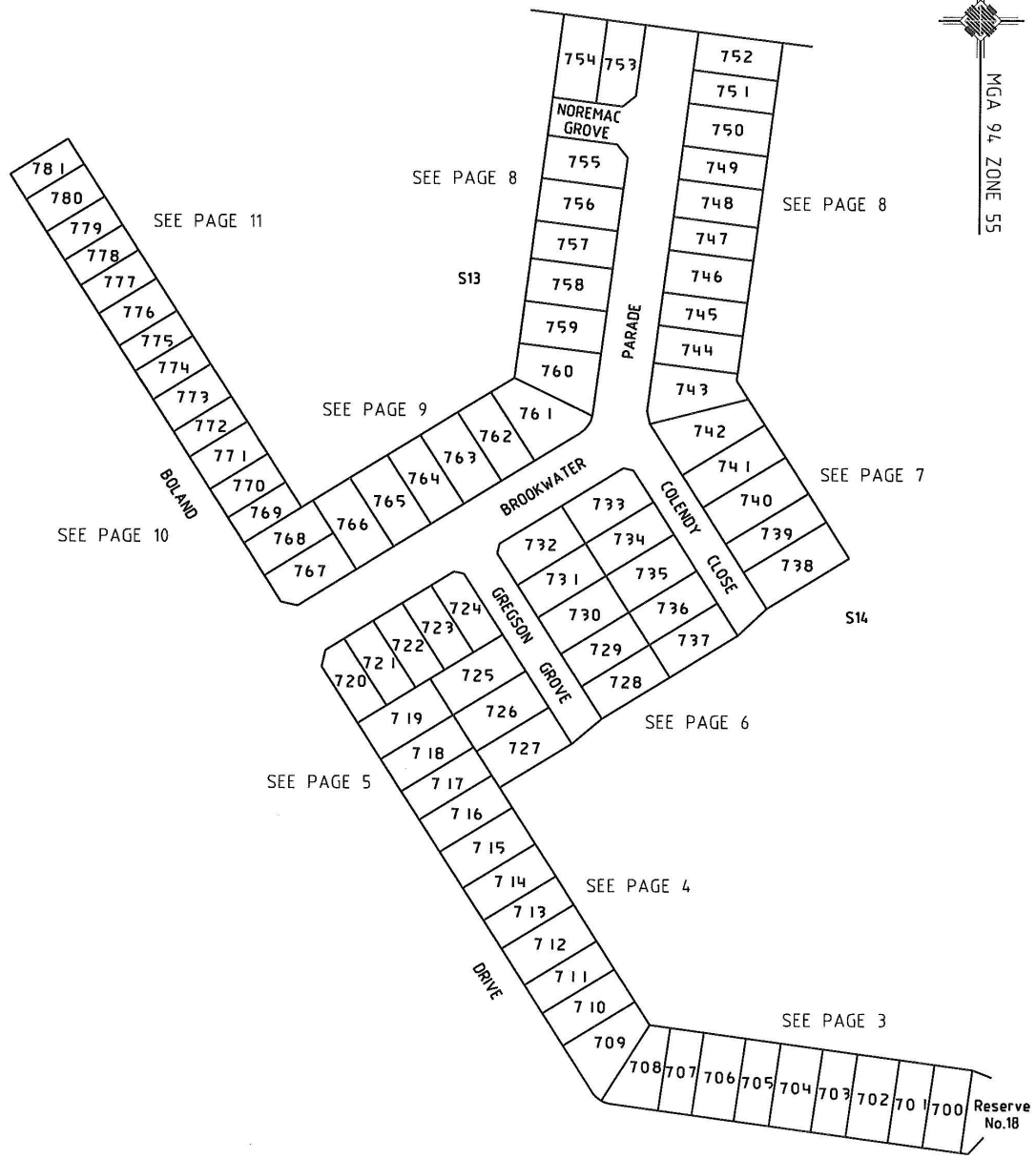
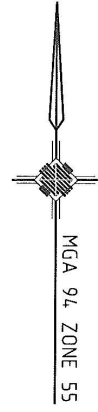
Refer "Diagrams and Plans" in this document for further definitions.

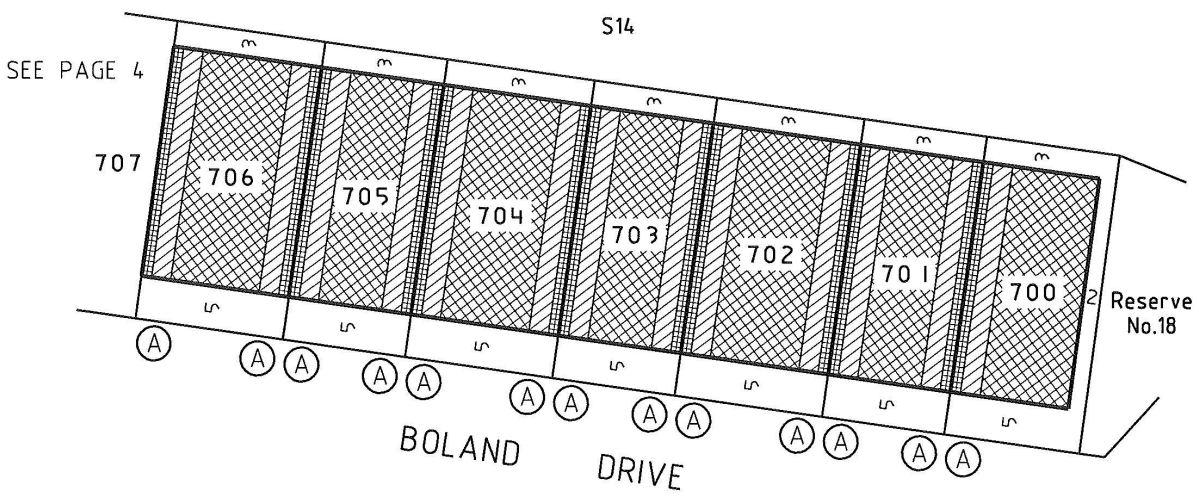
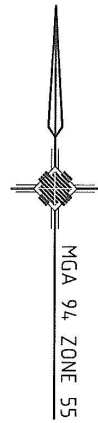
-  Single Storey Building Envelope (wall height not exceeding 3.6m)
-  Building to Boundary Zone
-  Overlooking Zone - Habitable room windows or raised open spaces are a source of overlooking.
-  Non Overlooking Zone - Habitable room windows or raised open spaces are not a source of overlooking.

The registered proprietor or proprietors of the lot are required to build in accordance with the approved building envelopes shown hereon and in the "Profile Diagrams" in this document.



**Watsons
Pty. Ltd.**
ABN 47 637 569 613





Notations:

1. The Building Envelopes on this plan are shown enclosed by continuous thick lines.
2. This diagram is to be read in conjunction with "Profile Diagrams" in this document.
3. Profile types (A), (B), (C), (D), (E), (F), (G), (H), (I), (J) & (T) are contained in "Profile Diagrams" in this document.



ERROR: stackunderflow
OFFENDING COMMAND: ~

STACK: