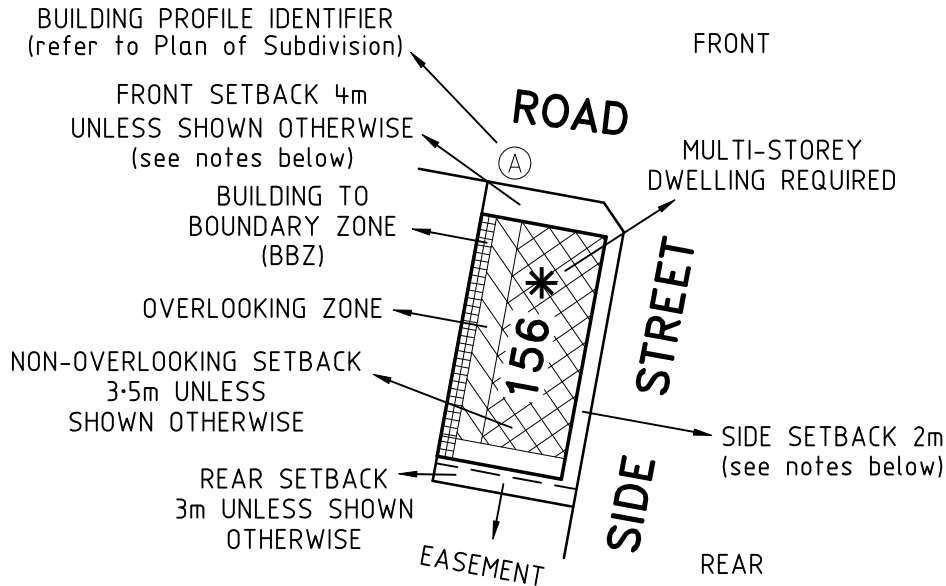


BUILDING ENVELOPE SCHEDULE

See Plan of Subdivision PS835646S

LEGEND

EXAMPLE OF TYPICAL BUILDING ENVELOPE SETBACKS

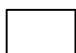



Notations

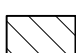

- The front and side setbacks are measured to the outermost walls of the buildings.
- Garages must be setback a minimum of 5.0m from the front street boundary unless otherwise noted.
- Walls less than 1.0m from the boundary must be within 200mm of the boundary.
- The BBZ shall be applicable to one side boundary only, one side boundary must be kept clear of buildings. Terrace style lots are exempt from this requirement.
- The setback to a side street boundary for a corner lot is 2m unless noted otherwise.
- Where the minimum front setback is 3.0m or more, porches, verandahs and architectural features can encroach into the front setback by up to 1.5m.
- Where the minimum front setback is less than 3.0m, porches, verandahs and architectural features can encroach into the front setback by up to 1.0m.
- Two storey dwellings must be setback a minimum of 5.5m from the rear boundary unless otherwise noted.
- The building regulations apply to construction of dwellings and need to be adhered to in relation to design principles.

Refer "Diagrams and Plans" in this document for further definitions

Single Storey Building Envelope hatch types

-  Single storey Building Envelope (wall height not exceeding 3.6m)
-  Building to Boundary Zone

Double Storey Building Envelope hatch types

-  Overlooking Zone - Habitable room windows or raised open spaces are a source of overlooking
-  Non Overlooking Zone - Habitable room windows or raised open spaces are not a source of overlooking

ASPIRE - Stage 29

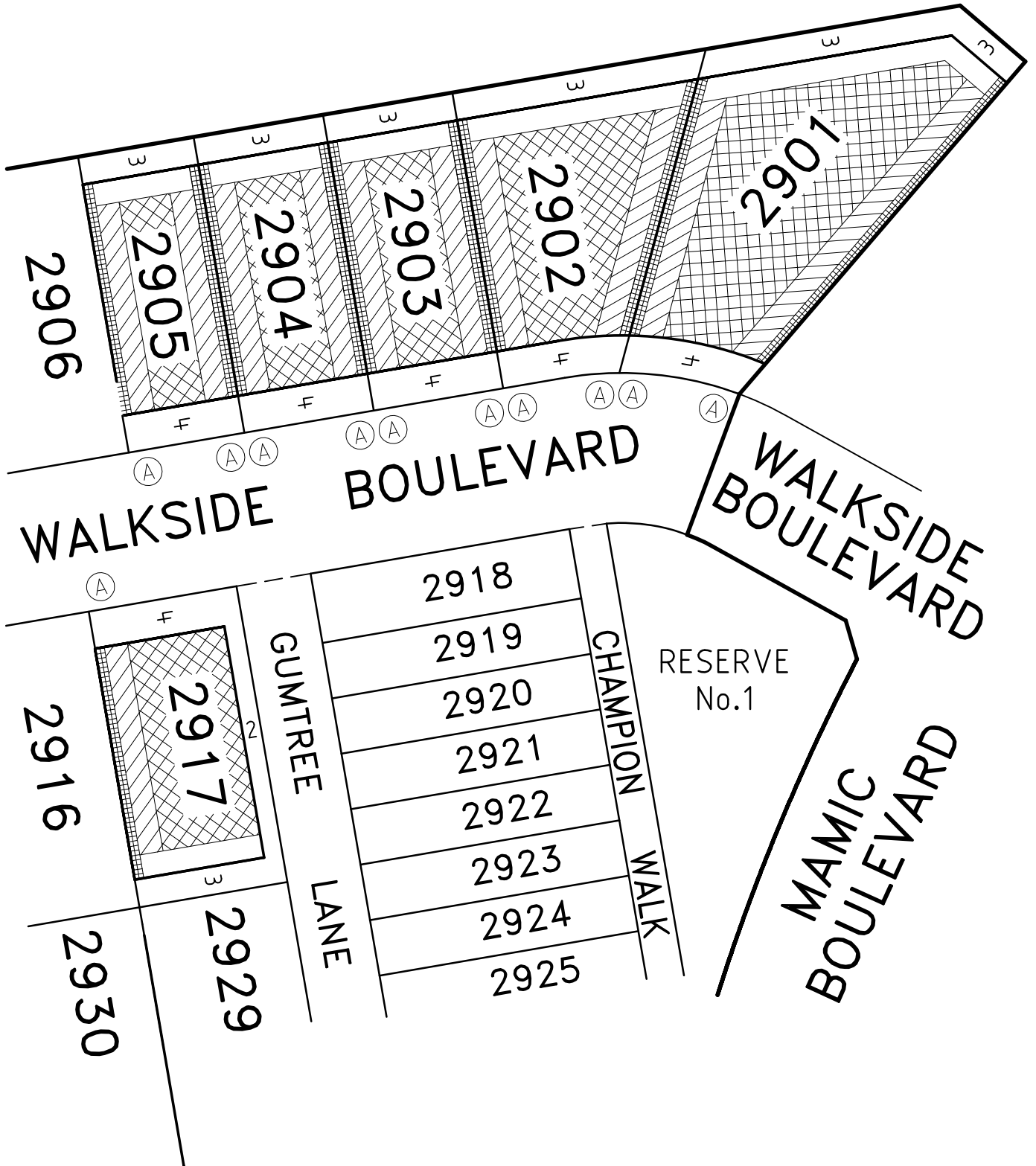
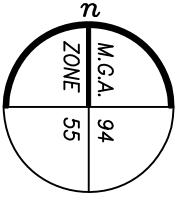
Dwg: 329896-ST29-BE

Date: 1/07/2022

veris

VERIS AUSTRALIA PTY LTD
 A | Level 3, 1 Southbank Blvd
 Southbank VIC 3006
 T | +61 3 7019 8400
 E | melbourne@veris.com.au
 W | www.veris.com.au

BUILDING ENVELOPE DIAGRAM

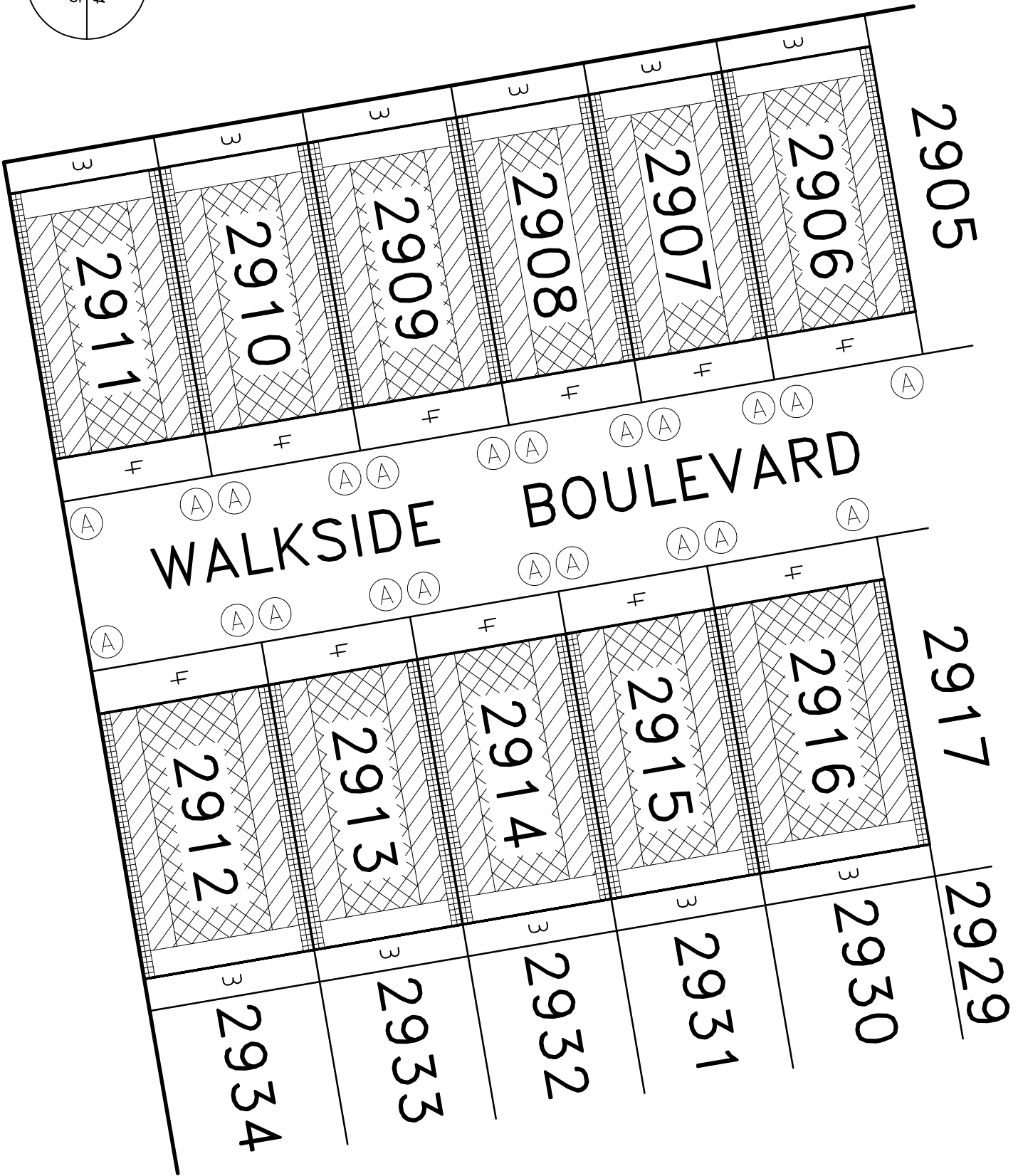
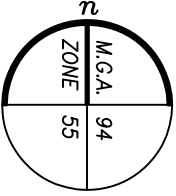


ASPIRE - Stage 29
 Dwg: 329896-ST29-BE
 Date: 1/07/2022

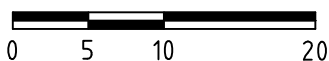


VERIS AUSTRALIA PTY LTD
 A | Level 3, 1 Southbank Blvd
 Southbank VIC 3006
 T | +61 3 7019 8400
 E | melbourne@veris.com.au
 W | www.veris.com.au

BUILDING ENVELOPE DIAGRAM

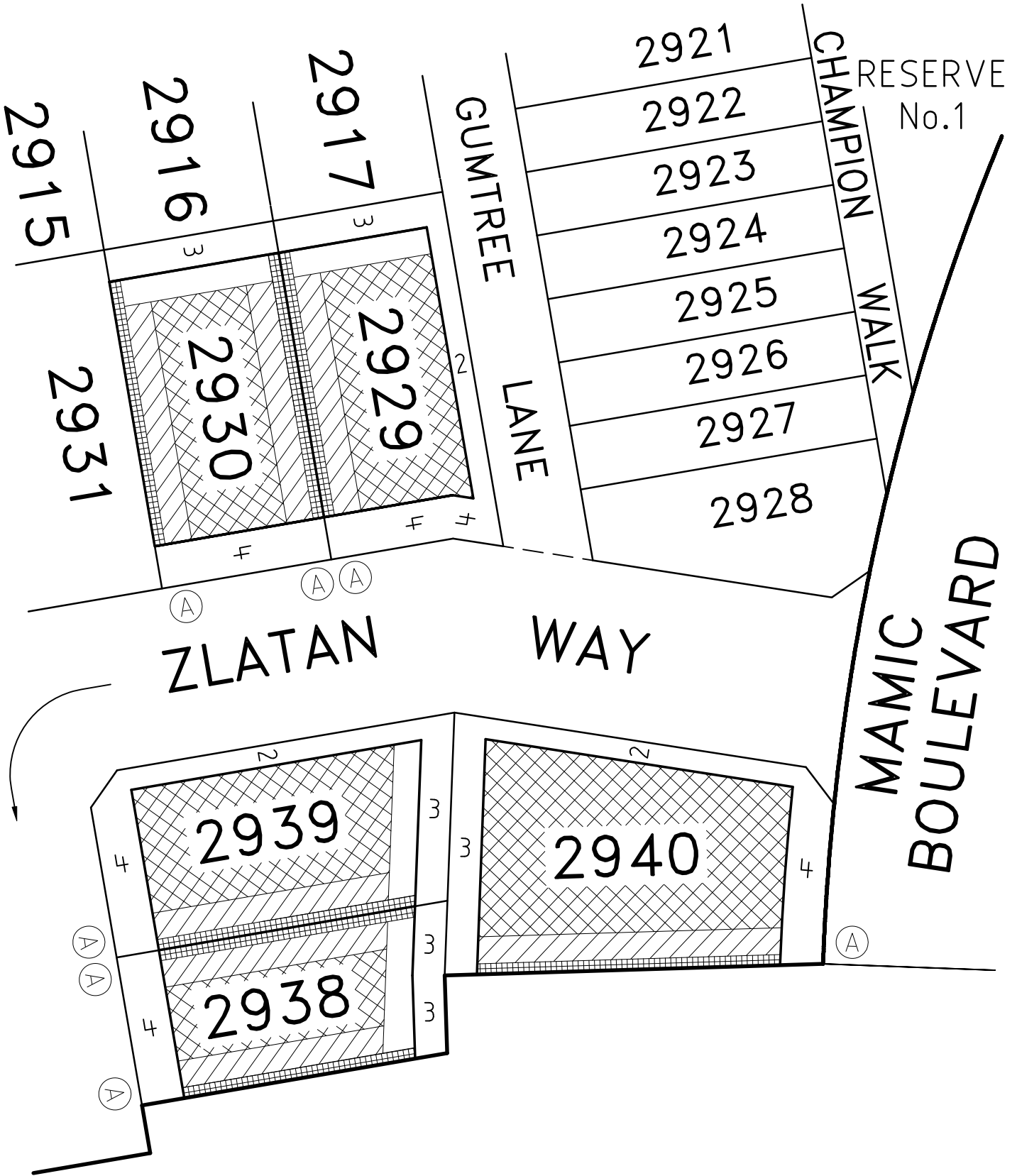
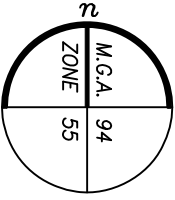


ASPIRE - Stage 29
Dwg: 329896-ST29-BE
Date: 1/07/2022

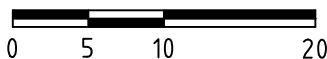


VERIS AUSTRALIA PTY LTD
A | Level 3, 1 Southbank Blvd
Southbank VIC 3006
T | +61 3 7019 8400
E | melbourne@veris.com.au
W | www.veris.com.au

BUILDING ENVELOPE DIAGRAM

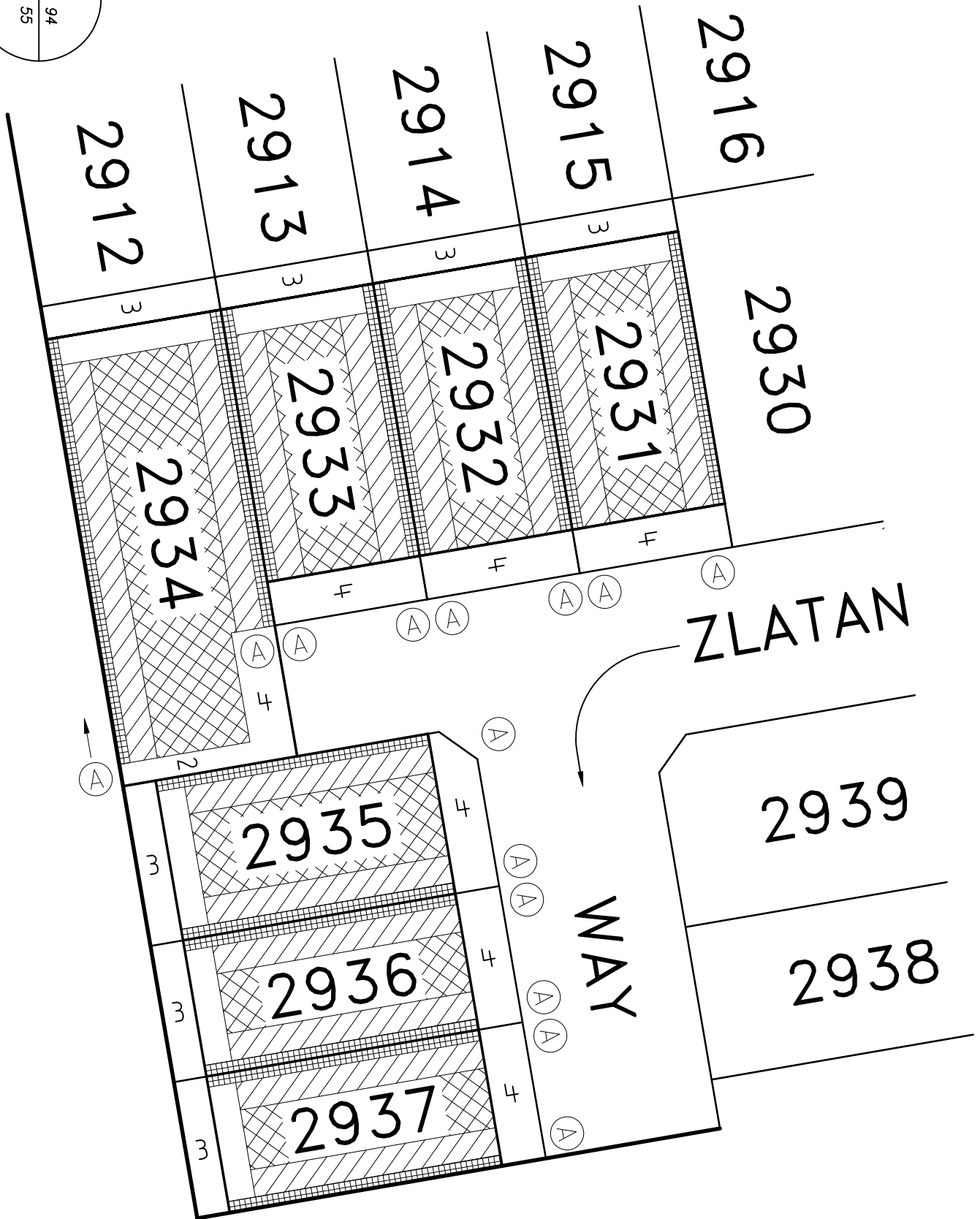
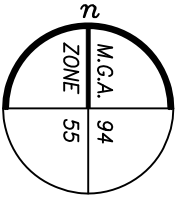


ASPIRE - Stage 29
Dwg: 329896-ST29-BE
Date: 1/07/2022

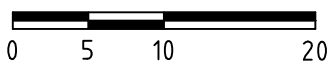


VERIS AUSTRALIA PTY LTD
A | Level 3, 1 Southbank Blvd
Southbank VIC 3006
T | +61 3 7019 8400
E | melbourne@veris.com.au
W | www.veris.com.au

BUILDING ENVELOPE DIAGRAM



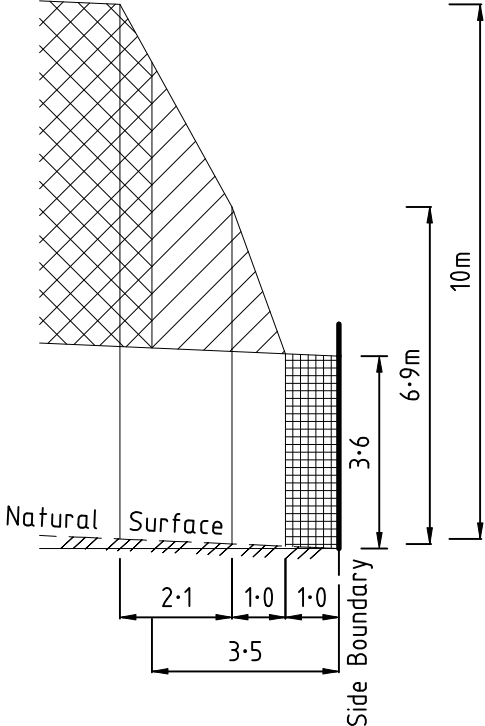
ASPIRE - Stage 29
Dwg: 329896-ST29-BE
Date: 1/07/2022



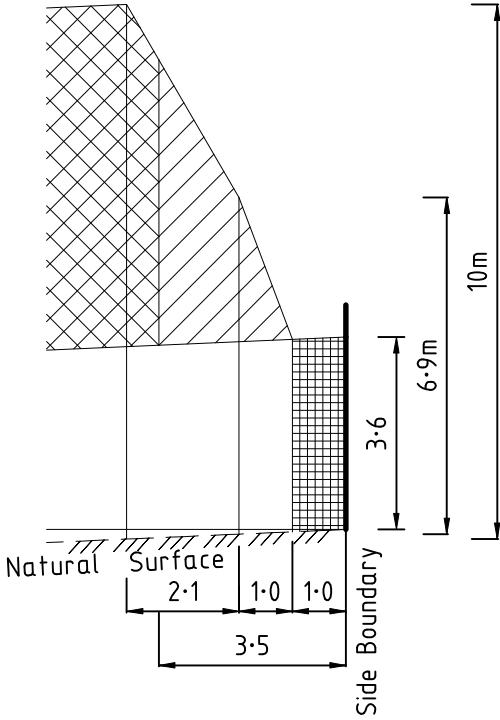
VERIS AUSTRALIA PTY LTD
A | Level 3, 1 Southbank Blvd
Southbank VIC 3006
T | +61 3 7019 8400
E | melbourne@veris.com.au
W | www.veris.com.au

PROFILE DIAGRAM

Ⓐ Profile



Natural surface rising from side boundary



Natural surface falling from side boundary