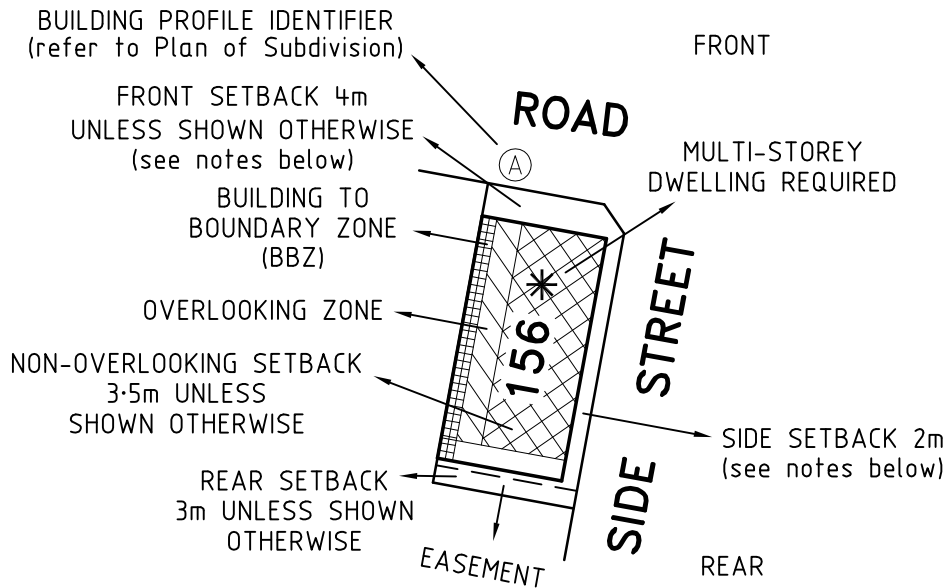


# BUILDING ENVELOPE SCHEDULE

See Plan of Subdivision PS835644W

## LEGEND

### EXAMPLE OF TYPICAL BUILDING ENVELOPE SETBACKS

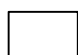



### Notations



- The front and side setbacks are measured to the outermost walls of the buildings.
- Garages must be setback a minimum of 5.0m from the front street boundary unless otherwise noted.
- Walls less than 1.0m from the boundary must be within 200mm of the boundary.
- The BBZ shall be applicable to one side boundary only, one side boundary must be kept clear of buildings. Terrace style lots are exempt from this requirement.
- The setback to a side street boundary for a corner lot is 2m unless noted otherwise.
- Where the minimum front setback is 3.0m or more, porches, verandahs and architectural features can encroach into the front setback by up to 1.5m.
- Where the minimum front setback is less than 3.0m, porches, verandahs and architectural features can encroach into the front setback by up to 1.0m.
- Two storey dwellings must be setback a minimum of 5.5m from the rear boundary unless otherwise noted.
- The building regulations apply to construction of dwellings and need to be adhered to in relation to design principles.

Refer "Diagrams and Plans" in this document for further definitions

#### Single Storey Building Envelope hatch types

-  Single storey Building Envelope (wall height not exceeding 3.6m)
-  Building to Boundary Zone

#### Double Storey Building Envelope hatch types

-  Overlooking Zone - Habitable room windows or raised open spaces are a source of overlooking
-  Non Overlooking Zone - Habitable room windows or raised open spaces are not a source of overlooking

ASPIRE - Stage 27

Dwg: 329896-ST27-BE

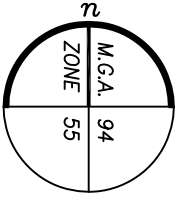
Date: 26/08/2021

Level 3, 1 Southbank Boulevard  
Southbank, Victoria 3006  
03) 7019 8400

DEVELOP WITH CONFIDENCE™  
www.veris.com.au  
Formerly **Bosco Jonson**



BUILDING ENVELOPE DIAGRAM



MAMIC BOULEVARD

2701

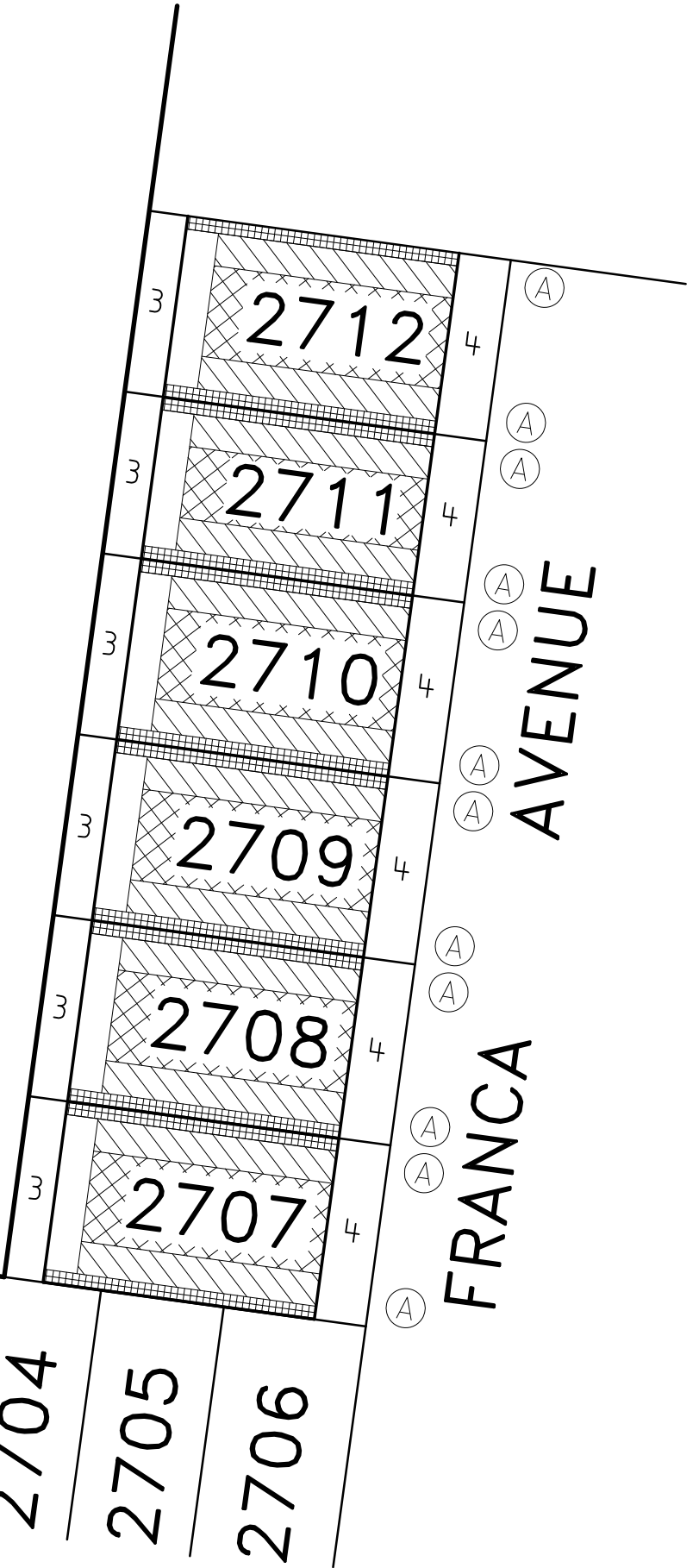
2702

2703

2704

2705

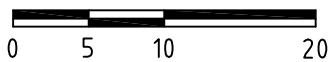
2706



ASPIRE - Stage 27

Dwg: 329896-ST27-BE

Date: 26/08/2021



Level 3, 1 Southbank Boulevard  
Southbank, Victoria 3006  
03) 7019 8400  
www.veris.com.au

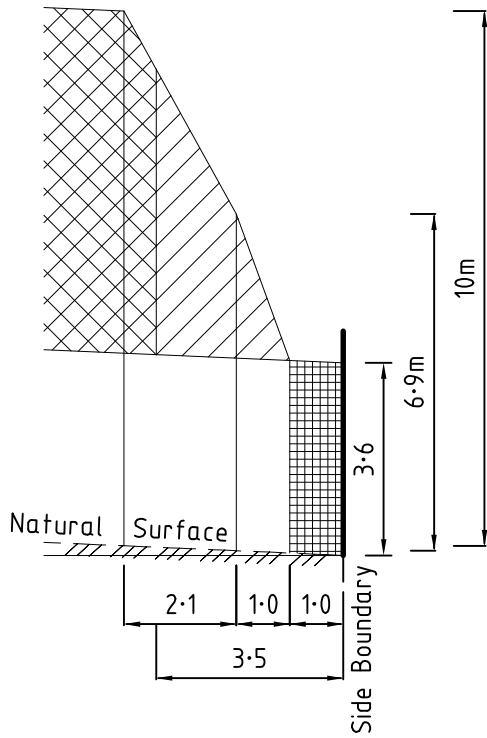
DEVELOP WITH CONFIDENCE™ Formerly **Bosco Jonson**



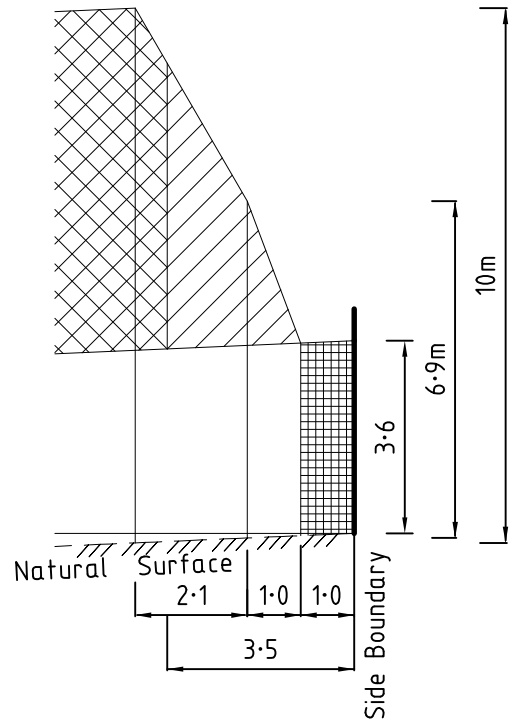


# PROFILE DIAGRAM

Ⓐ Profile



Natural surface rising from side boundary



Natural surface falling from side boundary

ASPIRE - Stage 27

Dwg: 329896-ST27-BE

Date: 26/08/2021

Level 3, 1 Southbank Boulevard

Southbank, Victoria 3006

03) 7019 8400

[www.veris.com.au](http://www.veris.com.au)

DEVELOP

WITH

CONFIDENCE™

Formerly

*Bosco Jonson*

