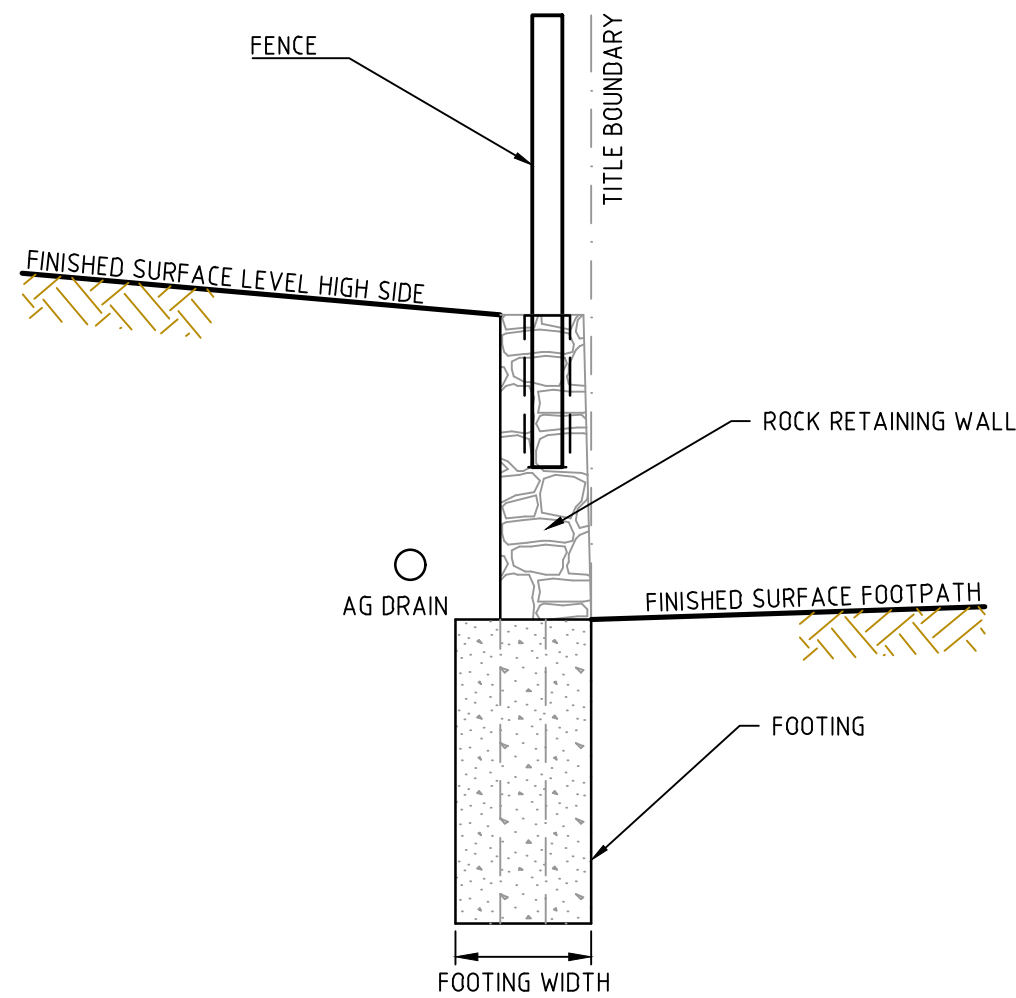
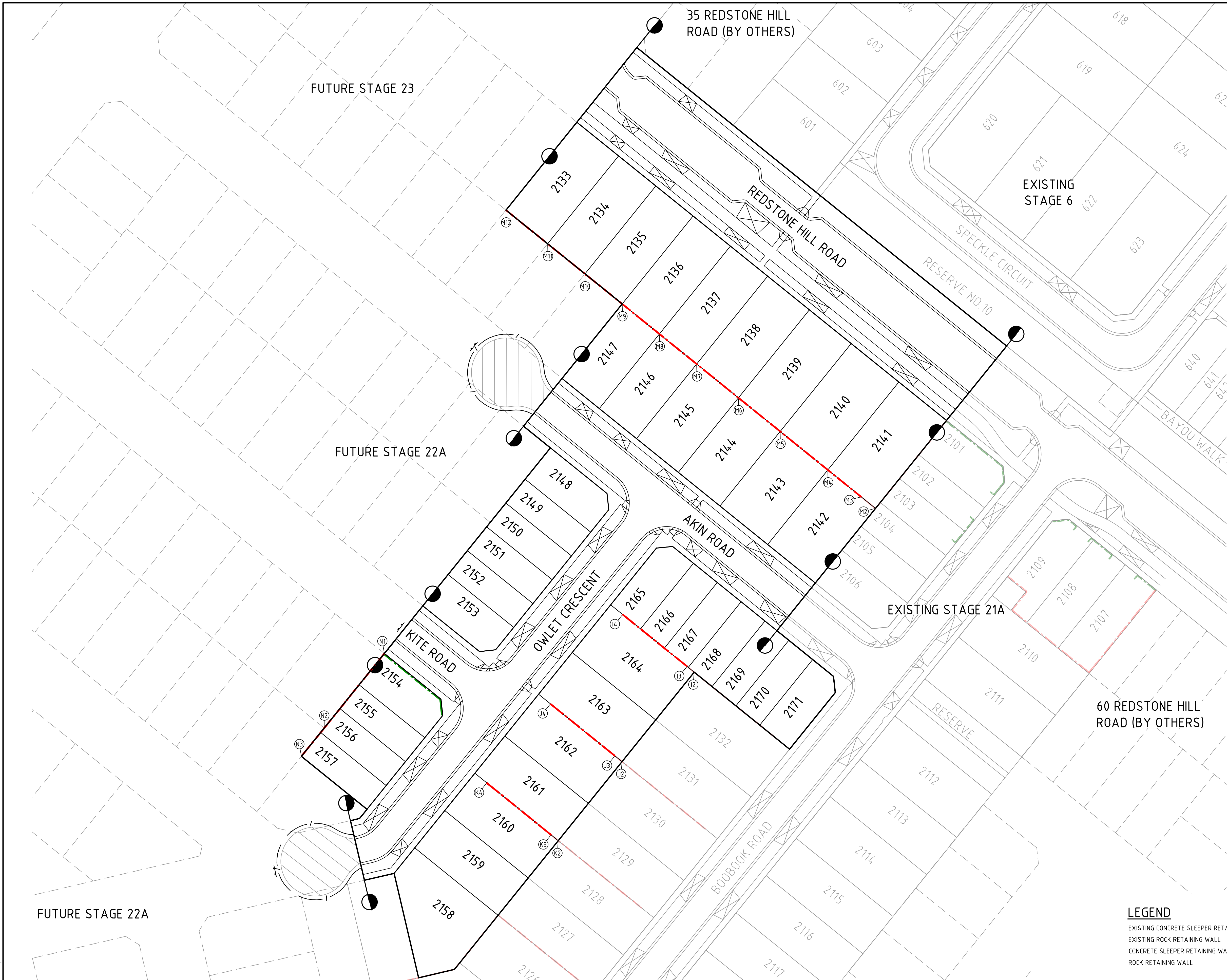
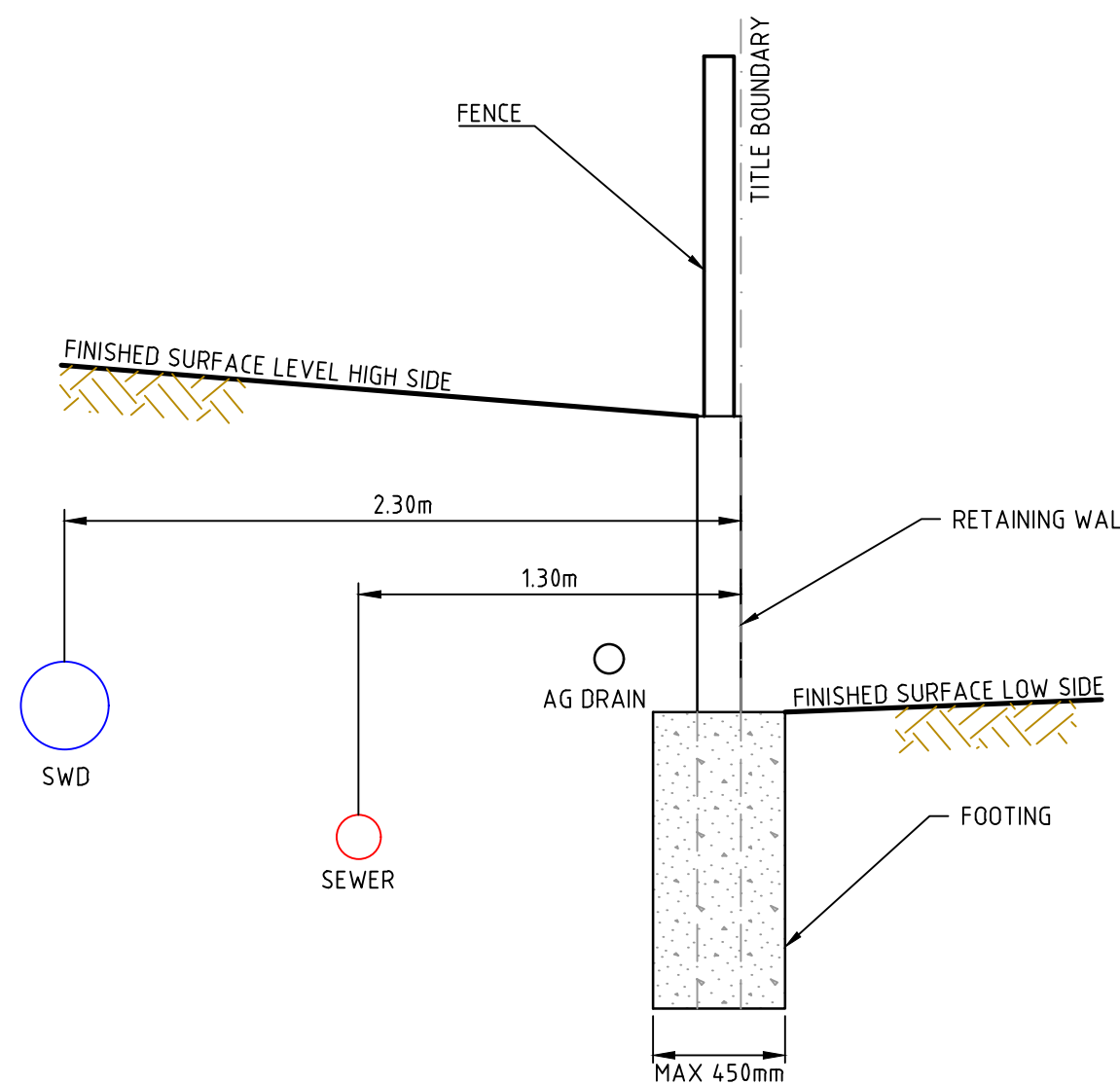


file name: 310827-001CR900-Rev Layout Plans C9000, plotted by: Jilian Tran, file location: G:\310827\001CR900\A4\A4.DWG, plot date: 05/09/2024, 11:03 AM, Sheet: 21 of 22 Sheets



ROCK RETAINING WALL TYPICAL DETAIL

NOT TO SCALE



SLEEPER RETAINING WALL TYPICAL DETAIL

NOT TO SCALE

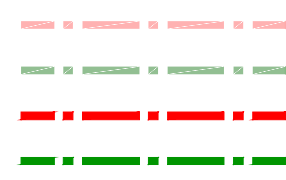
- NOTES:
1. DRAIN AND SEWER DEPTH VARIES ACROSS SITE.
 2. DEPTH OF SERVICE MUST BE ABOVE ANGLE OF REPOSE OF RETAINING WALL FOOTING
 3. MINIMUM COVER TO SERVICES IS 450mm
 4. AG DRAINS TO CONNECT TO STORMWATER SYSTEM

NOTE:
THE RETAINING WALL PLAN IS NOT PART OF THE SUBDIVISIONAL WORKS OR APPROVAL. IT IS SUBJECT TO SEPARATE APPROVAL, THIS SHEET IS SUPPLEMENTARY TO THE ENGINEERING DRAWINGS.

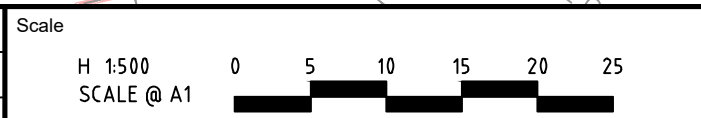
NOTE:
FOR LEVELS OF RETAINING WALLS FRONTING STREETS, REFER TO RELEVANT ROAD/STREET LONGITUDINAL SECTIONS

LEGEND

- EXISTING CONCRETE SLEEPER RETAINING WALL
EXISTING ROCK RETAINING WALL
CONCRETE SLEEPER RETAINING WALL
ROCK RETAINING WALL



Rev	Amendments	Approved	Date
B	TYPICAL DETAILS AMENDED	M.R	15/04/24
A	ISSUED TO COUNCIL	L.T	22/01/24



System Certified

© Spiire Australia Pty Ltd All Rights Reserved
This document is produced by Spiire Australia Pty Ltd solely for the benefit of and use by the client in accordance with the terms of the retainer. Spiire Australia Pty Ltd does not and shall not assume any responsibility or liability whatsoever to any third party arising out of any use or reliance by third party on the content of this document.



L6 414 LA TROBE STREET PO BOX 16084 MELBOURNE
VICTORIA 8007 AUSTRALIA T 61 3 9993 7888
spiire.com.au ABN 55 050 029 635



Redstone.
Your world awaits

Designed
L. TRAN
Authorised
L. TRAN

Checked
W. ONG
Date
22/01/24

REDSTONE ESTATE
STAGE 21B
ROAD AND DRAINAGE
RETAINING WALLS - SHEET 1
HUME CITY COUNCIL
VILLAWOOD PROPERTIES

PRELIMINARY Drg No 310827-001CR900 Rev B



A	ISSUED TO COUNCIL	L.T	22/01/24
Rev	Amendments	Approved	Date



© Spiire Australia Pty Ltd All Rights Reserved
This document is produced by Spiire Australia Pty Ltd solely for the benefit of and use by the client in accordance with the terms of the retainer. Spiire Australia Pty Ltd does not and shall not assume any responsibility or liability whatsoever to any third party arising out of any use or reliance by third party on the content of this document.

L6 414 LA TROBE STREET PO BOX 16084 MELBOURNE
VICTORIA 8007 AUSTRALIA T 61 3 9993 7888
spiire.com.au ABN 55 050 029 635



Designed
L. TRAN
Authorised
L. TRAN

Checked
W. ONG
Date
22/01/24

**REDSTONE ESTATE
STAGE 21B
ROAD AND DRAINAGE
RETAINING WALLS - SHEET 2
HUME CITY COUNCIL
VILLAWOOD PROPERTIES**

PRELIMINARY Drg No 310827-001CR901 Rev A