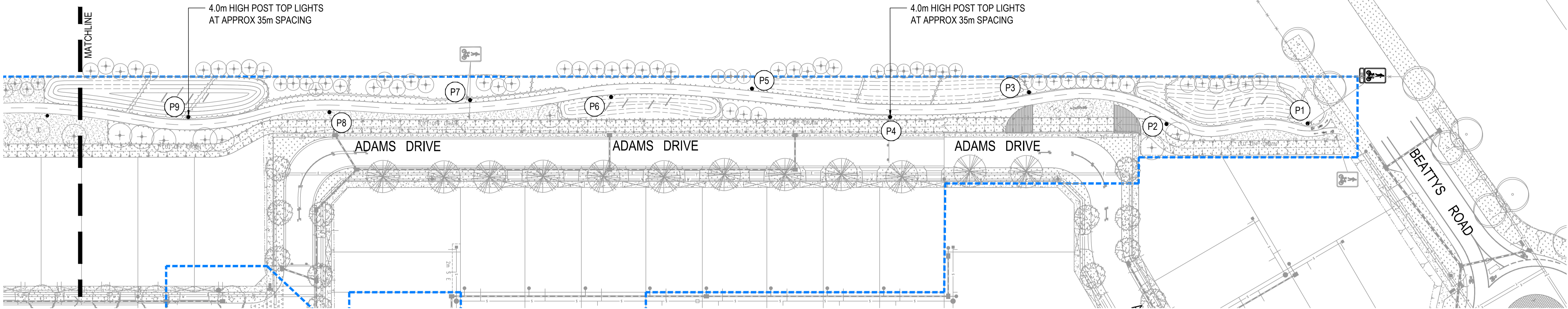


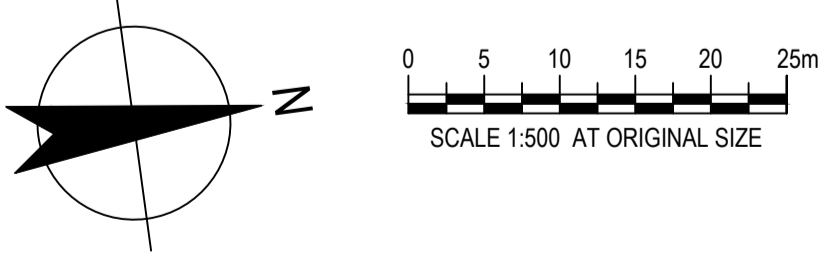
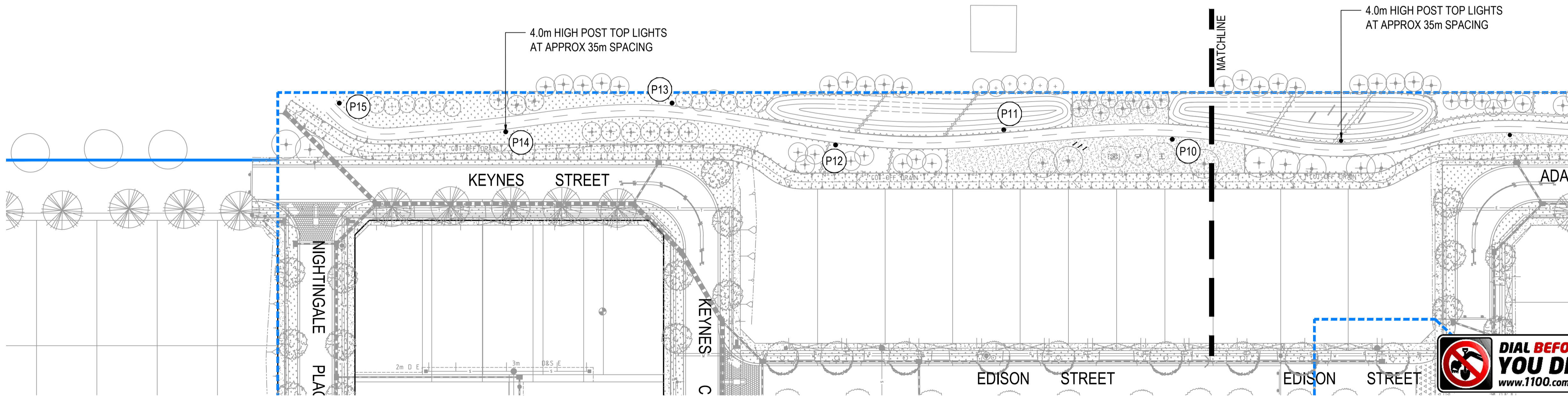
TRANSMISSION POWERLINE EASEMENT



TRANSMISSION POWERLINE EASEMENT

POST TOP LIGHT  
SETOUT POINTS

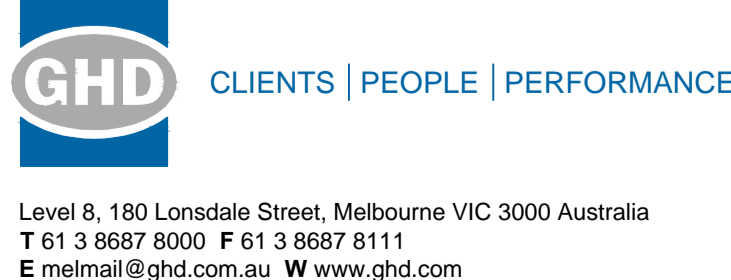
POINT	EASTING	NORTHING
P1	299473.319	5825693.258
P2	299468.747	5825658.558
P3	299456.337	5825625.831
P4	299457.791	5825590.861
P5	299446.163	5825557.850
P6	299443.527	5825522.950
P7	299439.568	5825488.174
P8	299437.823	5825453.217
P9	299434.292	5825418.395
P10	299429.251	5825383.760
P11	299422.589	5825349.400
P12	299421.014	5825314.435
P13	299407.824	5825282.016
P14	299409.077	5825247.038
P15	299398.538	5825213.661



**WARNING**  
ALL SERVICES SHOWN ON THIS DRAWING ARE APPROXIMATE ONLY AND EXACT LOCATION IS TO BE CONFIRMED ON SITE BY CONTRACTOR PRIOR TO COMMENCEMENT OF ANY WORKS.

**PRELIMINARY**

No	Revision	Note: * indicates signatures on original issue of drawing or last revision of drawing	Drawn	Job Manager	Project Director	Date
A	ISSUE FOR APPROVAL		GO			



**DO NOT SCALE**  
Conditions of Use.  
This document may only be used by GHD's client (and any other person who GHD has agreed can use this document) for the purpose for which it was prepared and must not be used by any other person or for any other purpose.

Drawn	G. OBMERGA	Designer	G. CATER
Drafting Check		Design Check	
Approved (Project Director)		Date	
Scale	1:500	This Drawing must not be used for Construction unless signed as Approved	

Client	<b>VILLAWOOD PROPERTIES</b>		
Project	<b>ASPIRE DEVELOPMENT</b>		
Title	<b>STAGE 2 LANDSCAPE LINEAR PARK LIGHTING</b>		
Original Size	A1	Drawing No:	<b>31-26332-L214</b>
Rev:	<b>A</b>		