

PLAN OF SUBDIVISION

Under Section 37 of the Subdivision Act 1988

LUV USE ONLY
EDITION

PLAN NUMBER
PS905192T/S9

LOCATION OF LAND

COUNCIL NAME: WYNDHAM CITY COUNCIL

PARISH: TARNEIT

TOWNSHIP: -

SECTION: 8

CROWN ALLOTMENT: A1 (PART)

CROWN PORTION: -

TITLE REFERENCES: Vol. Fol.

LAST PLAN REFERENCE/S: PS905192T/S10 (LOT S9)

POSTAL ADDRESS: 1071 SAYERS ROAD
(At time of subdivision) TARNEIT, 3029

MGA94 Co-ordinates E 292 300
(of approx centre of N 5 807 860
land in plan) ZONE 55

VESTING OF ROADS AND/OR RESERVES

NOTATIONS

| IDENTIFIER | COUNCIL/BODY/PERSON |
|------------|----------------------|
| ROAD R10 | WYNDHAM CITY COUNCIL |

LOTS ON THIS PLAN MAY BE AFFECTED BY ONE OR MORE OWNERS CORPORATIONS (SEE OWNERS CORPORATION SEARCH REPORT FOR DETAILS).

LOTS 1 TO 1700 (BOTH INCLUSIVE) HAVE BEEN OMITTED FROM THIS PLAN.

LOTS ON THIS PLAN MAY BE AFFECTED BY ONE OR MORE RESTRICTIONS. SEE SHEET 12 FOR FURTHER DETAILS.

NOTATIONS

DEPTH LIMITATION: 15.24m BELOW THE SURFACE.

STAGING: THIS IS A STAGED SUBDIVISION.
PLANNING PERMIT No. WYP10817

SURVEY: THIS PLAN IS BASED ON SURVEY.

THIS SURVEY HAS BEEN CONNECTED TO PERMANENT MARKS No(s):
PM17 (WERRIBEE) AND PM18, PM134, PM217 & PM760 (TARNEIT)

PROCLAIMED SURVEY AREA:

ALAMORA 17
3.834ha

53 LOTS

EASEMENTS E-1, E-2, E-4 TO E-7 (BOTH INCLUSIVE), E-10, E-13 TO E-19 (BOTH INCLUSIVE) AND E-23 HAVE BEEN OMITTED FROM THIS PLAN.

OTHER PURPOSE OF THE PLAN:
REMOVAL OF DRAINAGE & SEWERAGE EASEMENT E-21 ON PS905192T/S10 AS AFFECTS ANDRIA DRIVE ON THIS PLAN.

GROUNDS FOR REMOVAL:
BY AGREEMENT OF ALL INTERESTED PARTIES UPON REGISTRATION OF THIS PLAN PURSUANT TO SECTION 6(1)(k)(iv) OF THE SUBDIVISION ACT 1988.

EASEMENT INFORMATION

LEGEND A-Appurtenant Easement E-Encumbering Easement R-Encumbering Easement (Road)

IMPLIED EASEMENTS UNDER SECTION 12(2) OF THE SUBDIVISION ACT 1988 APPLY TO ALL LOTS ON THIS PLAN AND AS SET ASIDE ON LOT A ON PS841640V.

| Easement Reference | Purpose | Width (Metres) | Origin | Land Benefited/In Favour Of |
|--------------------|----------|----------------|---------------|-----------------------------------|
| E-3 | SEWERAGE | SEE PLAN | PS905192T | GREATER WESTERN WATER CORPORATION |
| E-8 | SEWERAGE | SEE PLAN | PS905192T/S3 | GREATER WESTERN WATER CORPORATION |
| E-9 | DRAINAGE | SEE PLAN | PS905192T/S3 | WYNDHAM CITY COUNCIL |
| | SEWERAGE | SEE PLAN | PS905192T/S3 | GREATER WESTERN WATER CORPORATION |
| E-11 | SEWERAGE | SEE PLAN | PS905192T/S4 | GREATER WESTERN WATER CORPORATION |
| E-12 | DRAINAGE | SEE PLAN | PS905192T/S4 | WYNDHAM CITY COUNCIL |
| | SEWERAGE | SEE PLAN | PS905192T/S4 | GREATER WESTERN WATER CORPORATION |
| E-20 | DRAINAGE | SEE PLAN | PS905192T/S4 | WYNDHAM CITY COUNCIL |
| E-21 | DRAINAGE | SEE PLAN | PS905192T/S8 | WYNDHAM CITY COUNCIL |
| | SEWERAGE | SEE PLAN | PS905192T/S8 | GREATER WESTERN WATER CORPORATION |
| E-22 | DRAINAGE | SEE PLAN | THIS PLAN | WYNDHAM CITY COUNCIL |
| E-24 | SEWERAGE | SEE PLAN | PS905192T/S10 | GREATER WESTERN WATER CORPORATION |
| E-25 | SEWERAGE | SEE PLAN | THIS PLAN | GREATER WESTERN WATER CORPORATION |
| E-26 | DRAINAGE | SEE PLAN | THIS PLAN | WYNDHAM CITY COUNCIL |
| | SEWERAGE | SEE PLAN | THIS PLAN | GREATER WESTERN WATER CORPORATION |

2070S-17 VER C.DWG AA/AA



an company

© SMEC AUSTRALIA PTY LTD (ABN 47 065 475 149)
TOWER 4, LEVEL 20, 727 COLLINS STREET
DOCKLANDS VIC 3008

SURVEYOR REF: **2070s-17**

ORIGINAL SHEET
SIZE: A3

SHEET 1 OF 12

ADRIAN THOMAS

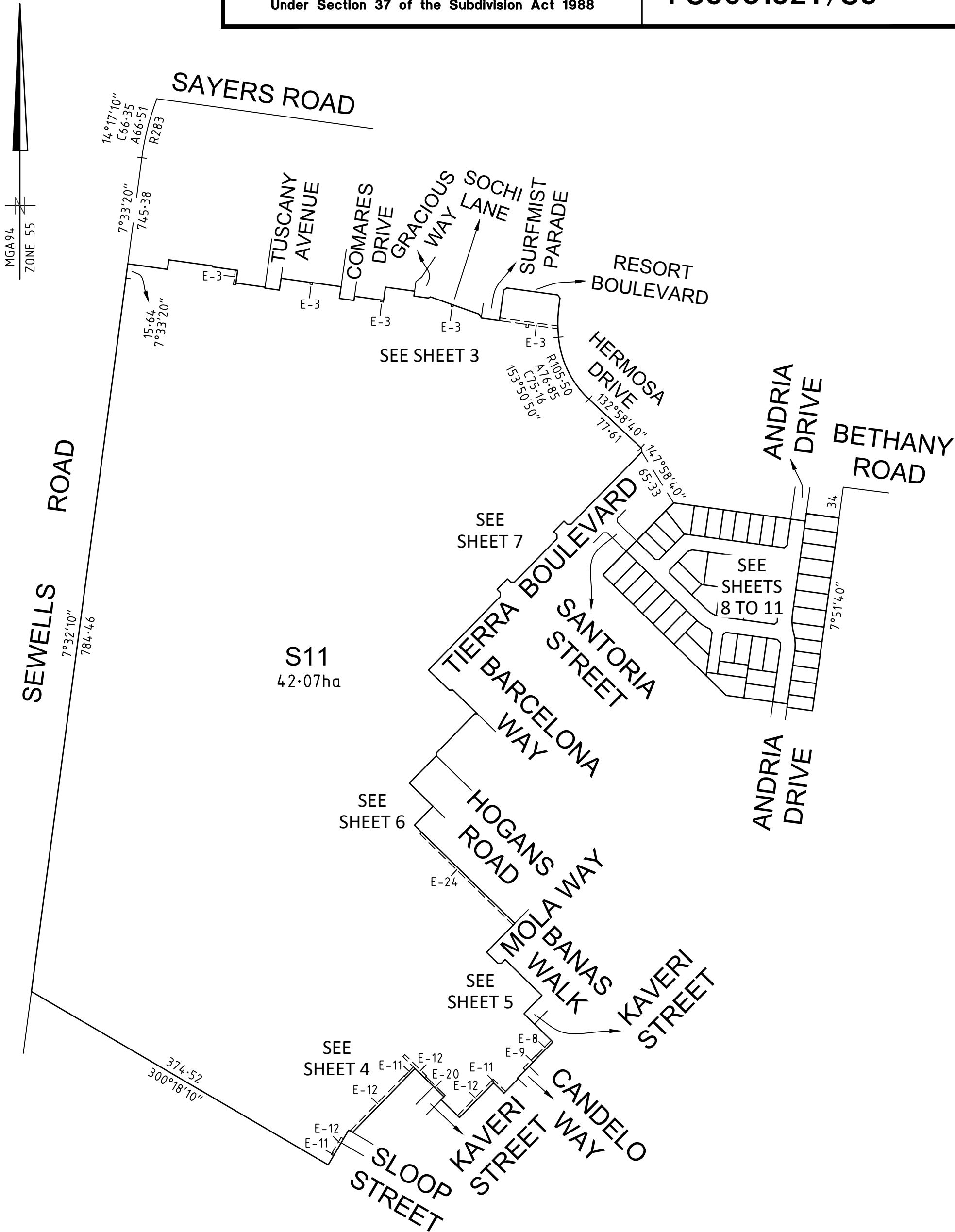
VERSION **C**

PLAN OF SUBDIVISION

Under Section 37 of the Subdivision Act 1988

PLAN NUMBER

PS905192T/S9

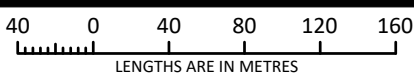


an company

© SMEC AUSTRALIA PTY LTD (ABN 47 065 475 149)
TOWER 4, LEVEL 20, 727 COLLINS STREET
DOCKLANDS VIC 3008

REF 2070s-17

SCALE
1:4000



ORIGINAL SHEET
SIZE: A3

SHEET 2

ADRIAN THOMAS

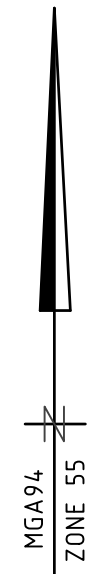
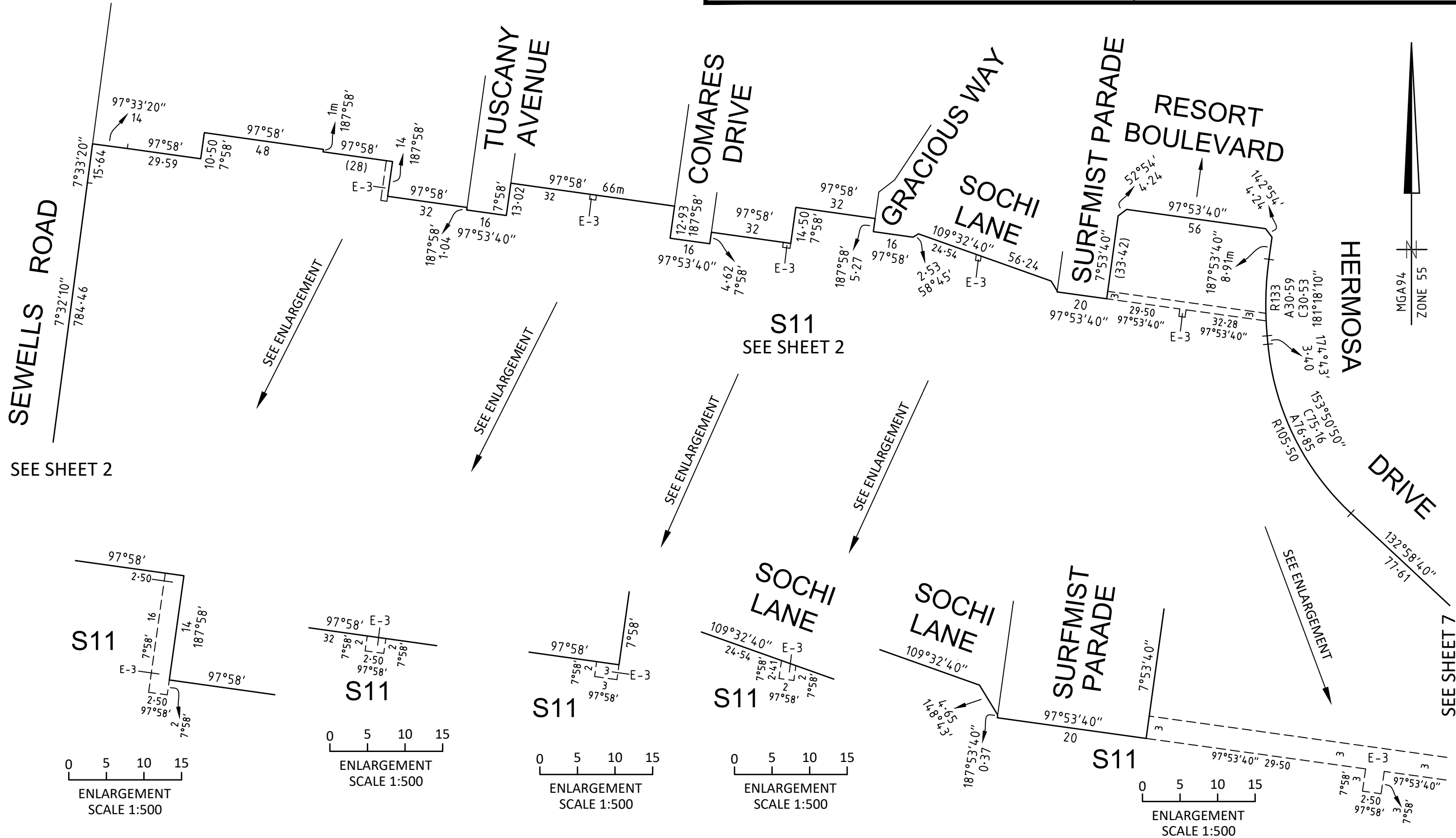
VERSION C

PLAN OF SUBDIVISION

Under Section 37 of the Subdivision Act 1988

PLAN NUMBER

PS905192T/S9



SEWELLS ROAD

SEE SHEET 2

SEE ENLARGEMENT

SEE ENLARGEMENT

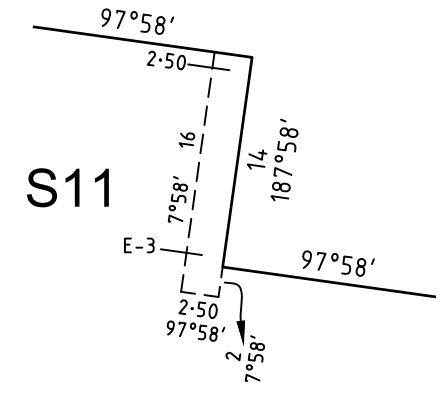
SEE ENLARGEMENT

SEE ENLARGEMENT

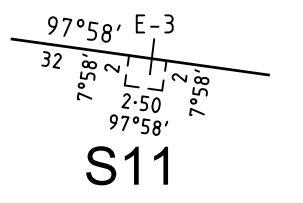
SEE ENLARGEMENT

SEE SHEET 7

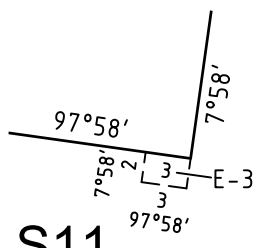
S11
SEE SHEET 2



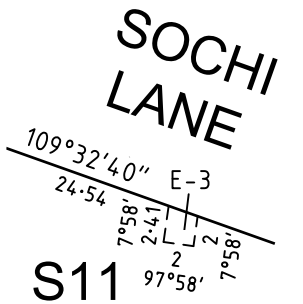
ENLARGEMENT
SCALE 1:500



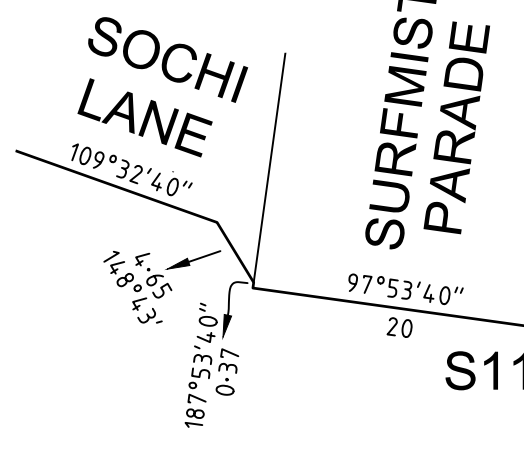
ENLARGEMENT
SCALE 1:500



ENLARGEMENT
SCALE 1:500



ENLARGEMENT
SCALE 1:500



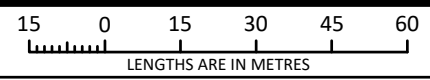
ENLARGEMENT
SCALE 1:500



an company

© SMEC AUSTRALIA PTY LTD (ABN 47 065 475 149)
TOWER 4, LEVEL 20, 727 COLLINS STREET
DOCKLANDS VIC 3008 REF 2070s-17

SCALE
1:1500



ORIGINAL SHEET
SIZE A3

SHEET 3

ADRIAN THOMAS

VERSION C

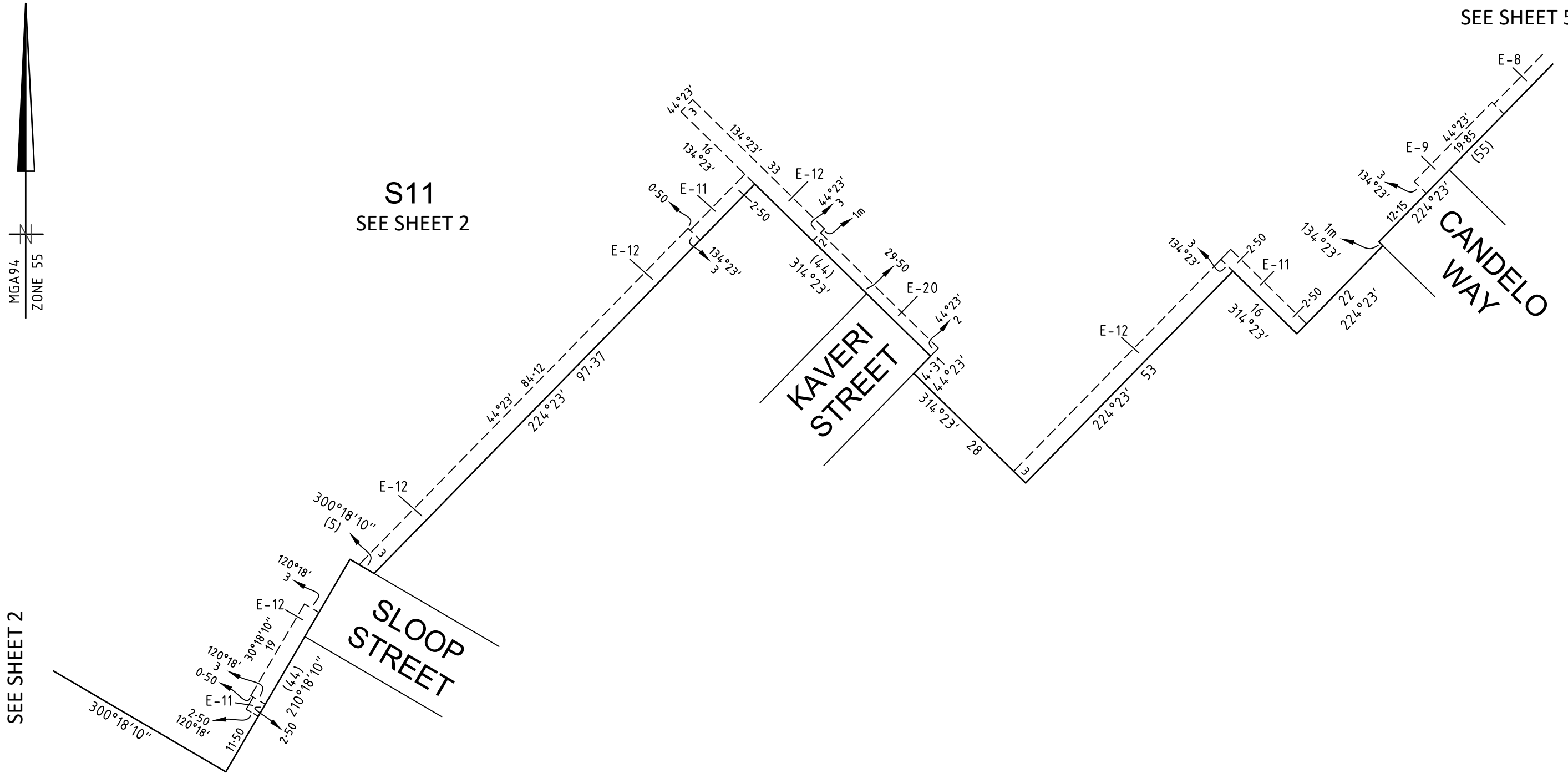
PLAN OF SUBDIVISION

Under Section 37 of the Subdivision Act 1988

PLAN NUMBER

PS905192T/S9

SEE SHEET 5



SEE SHEET 2

S11
SEE SHEET 2

CANDELO
WAY

KAVERI
STREET

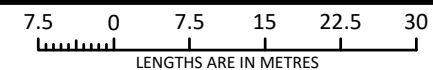
SLOOP
STREET



an company

© SMEC AUSTRALIA PTY LTD (ABN 47 065 475 149)
TOWER 4, LEVEL 20, 727 COLLINS STREET
DOCKLANDS VIC 3008 REF 2070s-17

SCALE
1:750



ORIGINAL SHEET
SIZE A3

SHEET 4

ADRIAN THOMAS

VERSION C

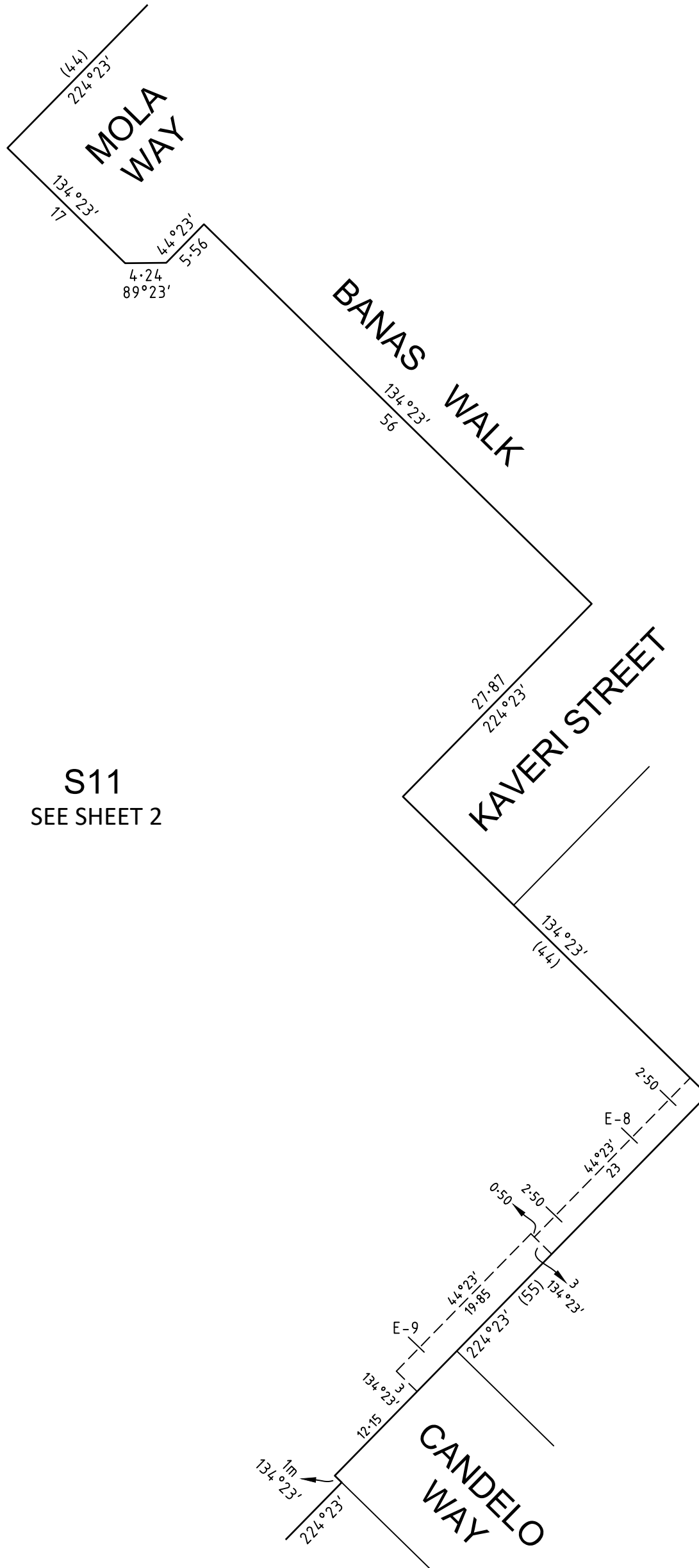
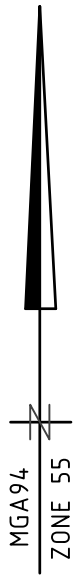
PLAN OF SUBDIVISION

Under Section 37 of the Subdivision Act 1988

PLAN NUMBER

PS905192T/S9

SEE SHEET 6



S11
SEE SHEET 2

SEE SHEET 4

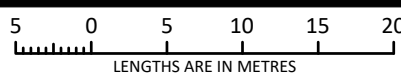


an  company

© SMEC AUSTRALIA PTY LTD (ABN 47 065 475 149)
TOWER 4, LEVEL 20, 727 COLLINS STREET
DOCKLANDS VIC 3008

REF 2070s-17

SCALE
1:500



ORIGINAL SHEET
SIZE: A3

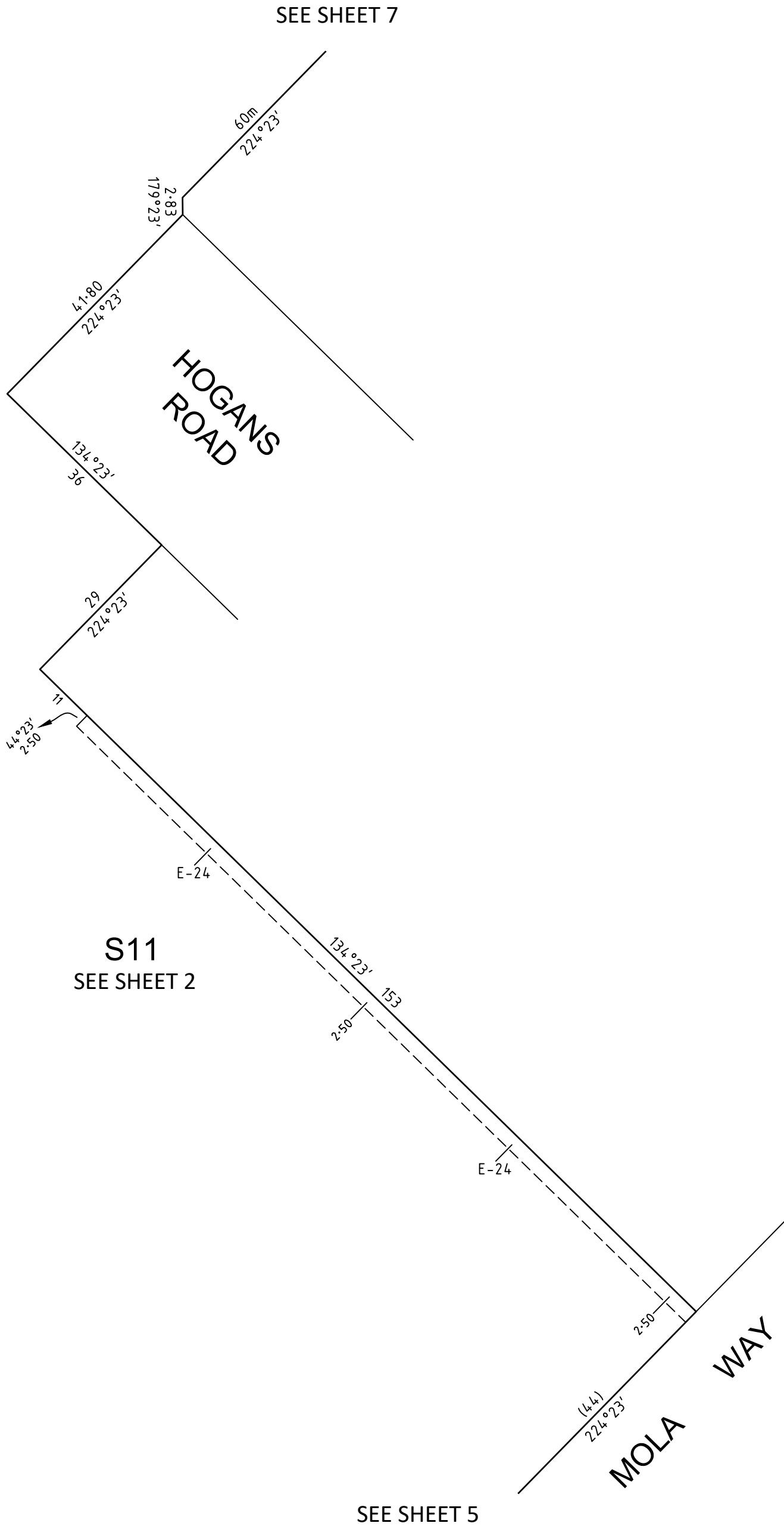
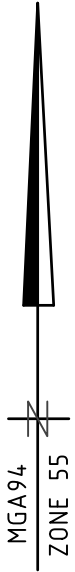
SHEET 5

ADRIAN THOMAS

VERSION C

PLAN OF SUBDIVISION
Under Section 37 of the Subdivision Act 1988

PLAN NUMBER
PS905192T/S9

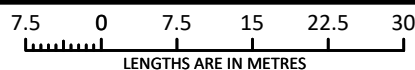


an company

© SMEC AUSTRALIA PTY LTD (ABN 47 065 475 149)
TOWER 4, LEVEL 20, 727 COLLINS STREET
DOCKLANDS VIC 3008

REF 2070s-17

SCALE
1:750



ORIGINAL SHEET
SIZE: A3

SHEET 6

ADRIAN THOMAS

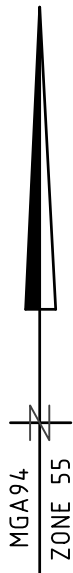
VERSION C

PLAN OF SUBDIVISION

Under Section 37 of the Subdivision Act 1988

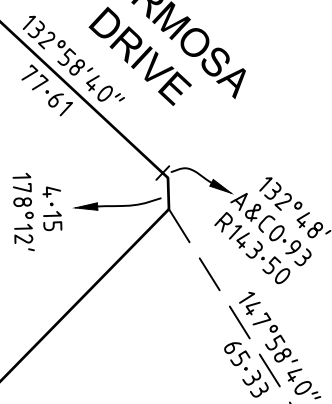
PLAN NUMBER

PS905192T/S9



SEE SHEET 3

HERMOSA DRIVE



SEE SHEET 9

S11
SEE SHEET 2

BOULEVARD

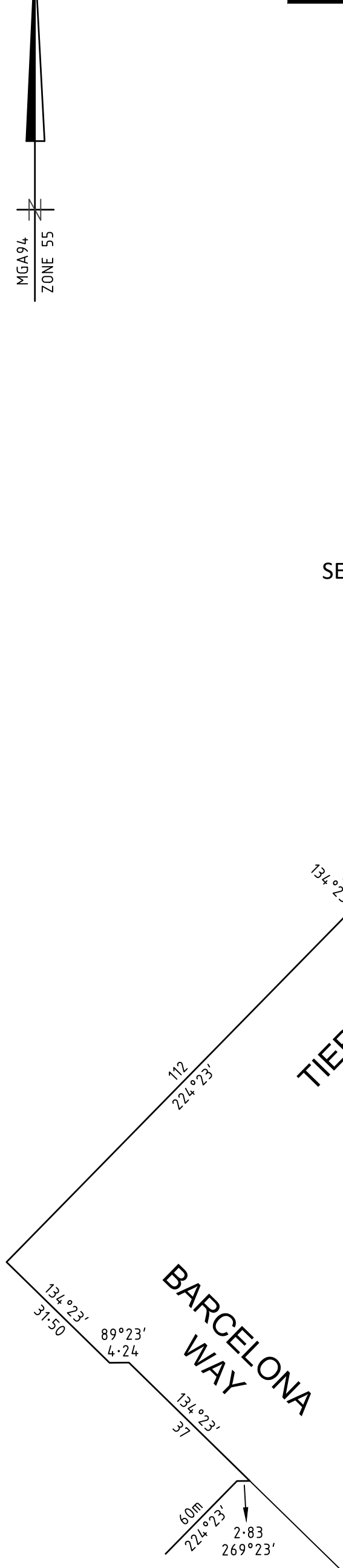
MANAIR VIEW

HASDEO WAY

TIERRA

BARCELONA WAY

SEE SHEET 6

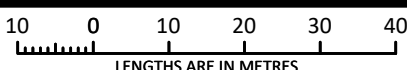


an company

© SMEC AUSTRALIA PTY LTD (ABN 47 065 475 149)
TOWER 4, LEVEL 20, 727 COLLINS STREET
DOCKLANDS VIC 3008

REF 2070s-17

SCALE
1:1000



ORIGINAL SHEET
SIZE: A3

SHEET 7

ADRIAN THOMAS

VERSION C

SEE SHEET 9

SEE SHEET 10

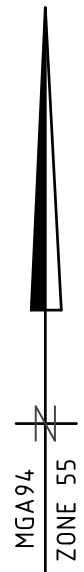
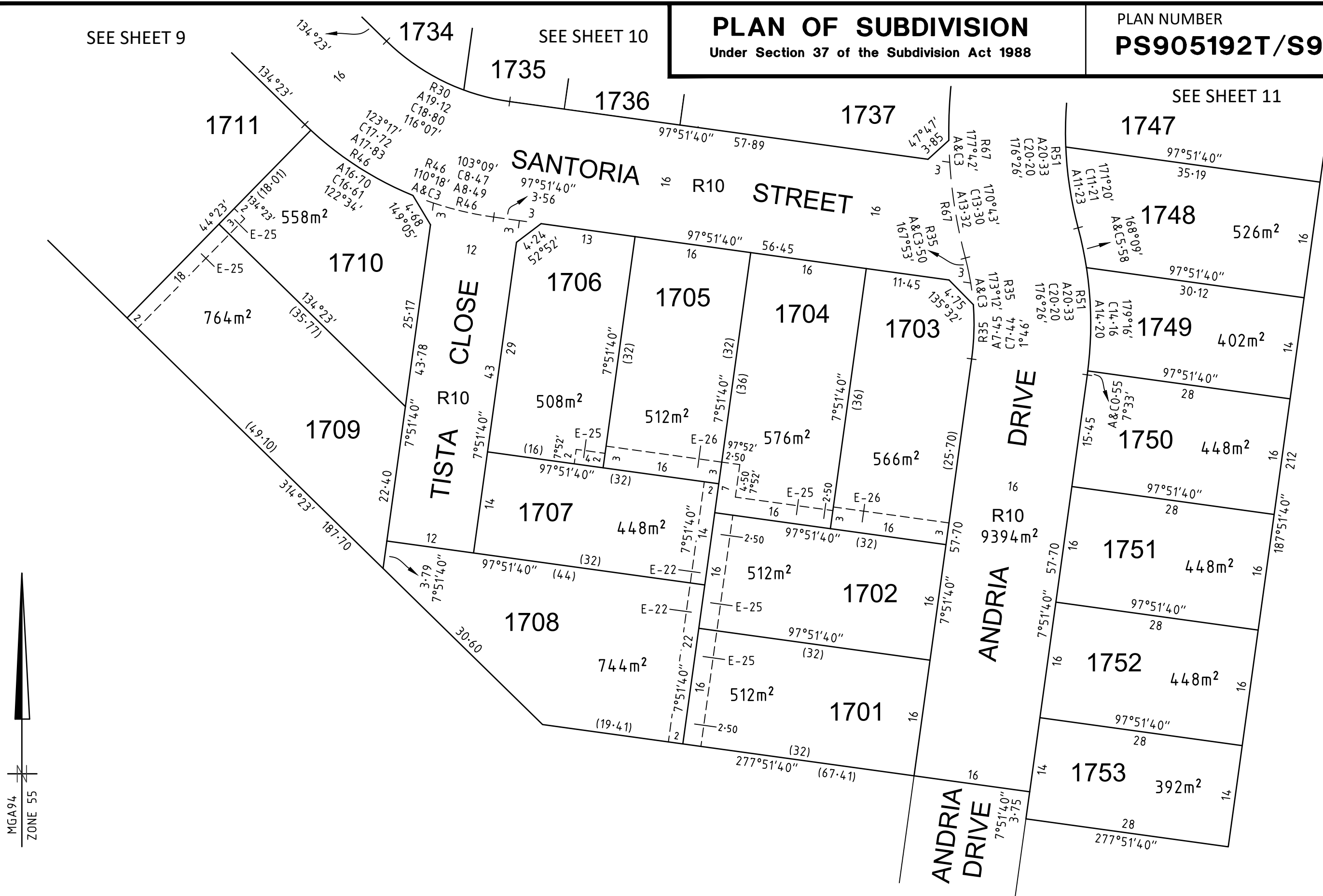
PLAN OF SUBDIVISION

Under Section 37 of the Subdivision Act 1988

PLAN NUMBER

PS905192T/S9

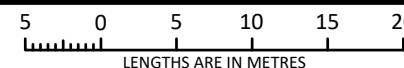
SEE SHEET 11



an company

© SMEC AUSTRALIA PTY LTD (ABN 47 065 475 149)
TOWER 4, LEVEL 20, 727 COLLINS STREET
DOCKLANDS VIC 3008 REF 2070s-17

SCALE
1:500



ORIGINAL SHEET
SIZE A3

SHEET 8

ADRIAN THOMAS

VERSION C

PLAN OF SUBDIVISION

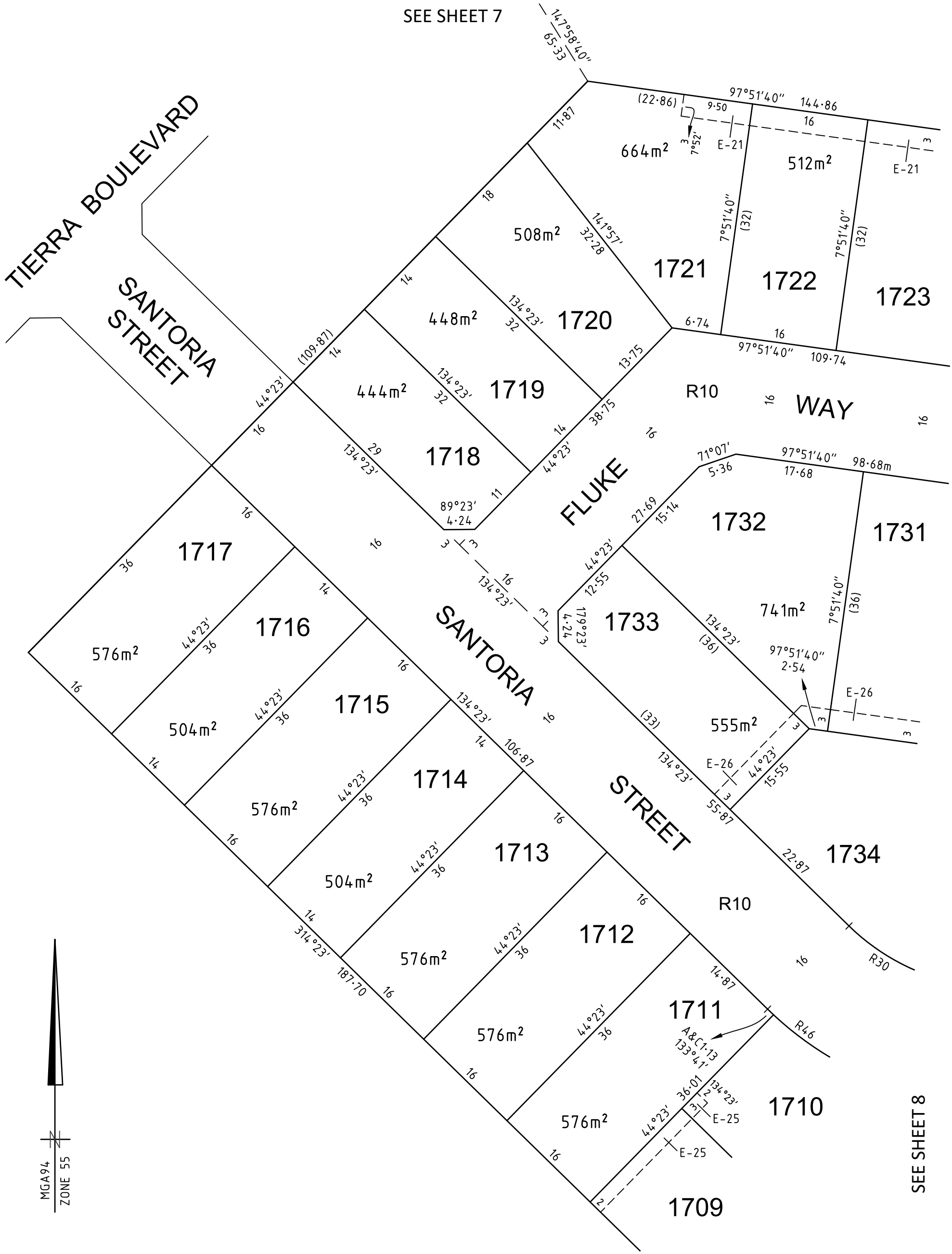
Under Section 37 of the Subdivision Act 1988

PLAN NUMBER

PS905192T/S9

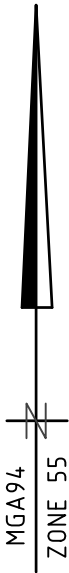
SEE SHEET 7

TIERRA BOULEVARD
SANTORIA STREET



SEE SHEET 10

SEE SHEET 8

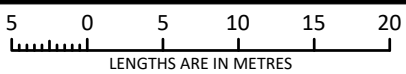


an company

© SMEC AUSTRALIA PTY LTD (ABN 47 065 475 149)
TOWER 4, LEVEL 20, 727 COLLINS STREET
DOCKLANDS VIC 3008

REF 2070s-17

SCALE
1:500



ORIGINAL SHEET
SIZE: A3

SHEET 9

ADRIAN THOMAS

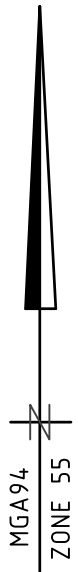
VERSION C

PLAN OF SUBDIVISION

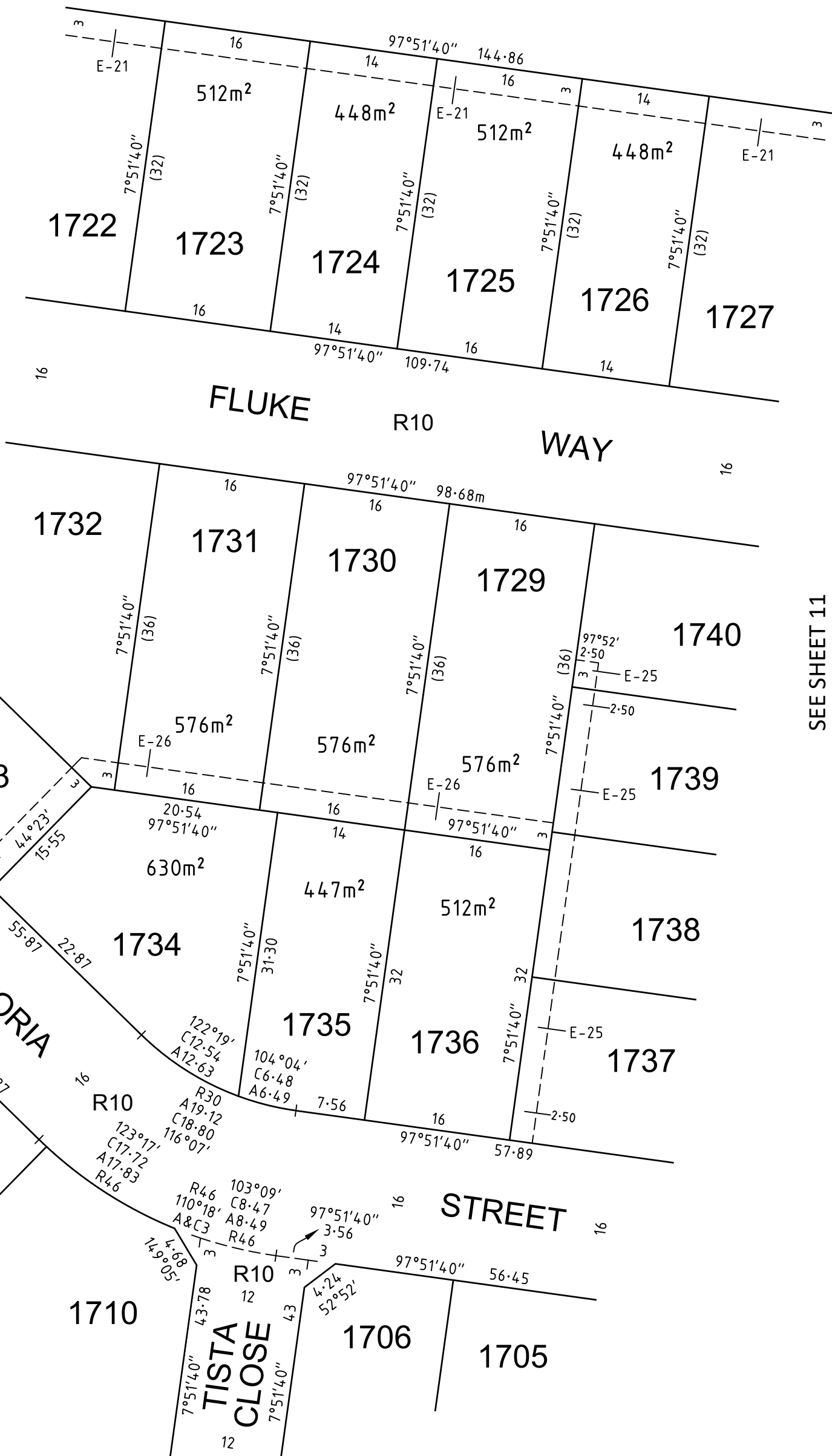
Under Section 37 of the Subdivision Act 1988

PLAN NUMBER

PS905192T/S9



SEE SHEET 9



SEE SHEET 11

SEE SHEET 8

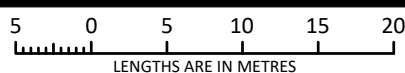


an company

© SMEC AUSTRALIA PTY LTD (ABN 47 065 475 149)
TOWER 4, LEVEL 20, 727 COLLINS STREET
DOCKLANDS VIC 3008

REF 2070s-17

SCALE
1:500



ORIGINAL SHEET
SIZE: A3

SHEET 10

ADRIAN THOMAS

VERSION C

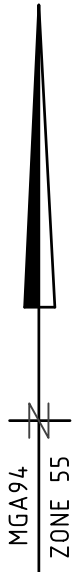
PLAN OF SUBDIVISION

Under Section 37 of the Subdivision Act 1988

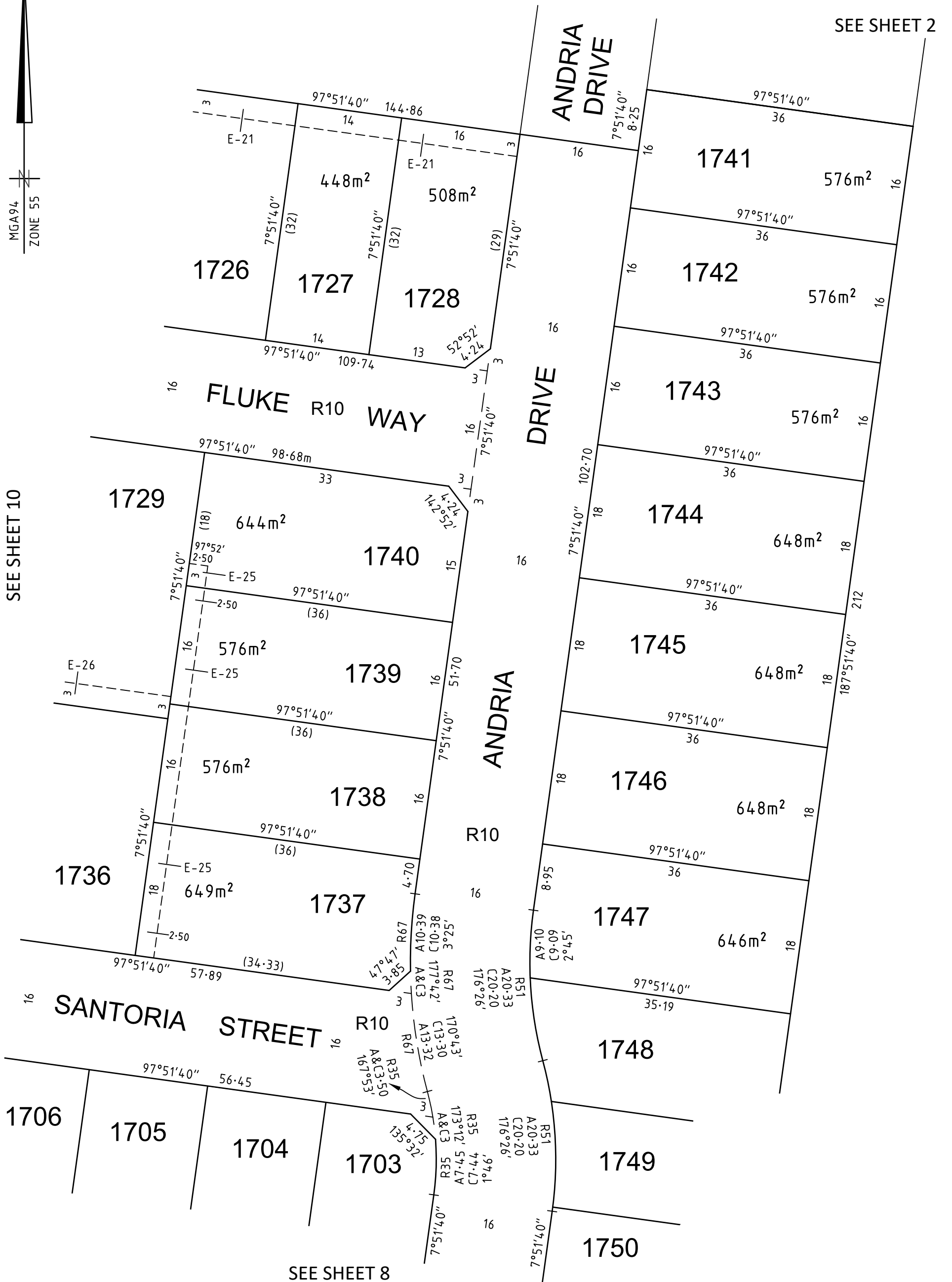
PLAN NUMBER

PS905192T/S9

SEE SHEET 2



SEE SHEET 10



SEE SHEET 8

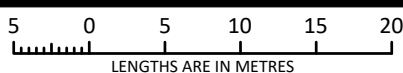


an company

© SMEC AUSTRALIA PTY LTD (ABN 47 065 475 149)
TOWER 4, LEVEL 20, 727 COLLINS STREET
DOCKLANDS VIC 3008

REF 2070s-17

SCALE
1:500



ORIGINAL SHEET
SIZE: A3

SHEET 11

ADRIAN THOMAS

VERSION C

PLAN OF SUBDIVISION

Under Section 37 of the Subdivision Act 1988

PLAN NUMBER
PS905192T/S9

Upon registration of this plan the following restrictions are created:

The registered proprietors of the burdened land covenant with the registered proprietors of the benefited land as set out in the restriction with the intent that the burden of the restriction runs with and binds the burdened land and the benefit of the restriction is annexed to and runs with the benefited land.

CREATION OF RESTRICTION A

Table of Land Burdened and Land Benefited:

| BURDENED LOT No. | BENEFITING LOTS |
|------------------|------------------------------|
| 1701 | 1702, 1708 |
| 1702 | 1701, 1703, 1704, 1707, 1708 |
| 1703 | 1702, 1704 |
| 1704 | 1702, 1703, 1705, 1707 |
| 1705 | 1704, 1706, 1707 |
| 1706 | 1705, 1707 |
| 1707 | 1702, 1704, 1705, 1706, 1708 |
| 1708 | 1701, 1702, 1707, 1709 |
| 1709 | 1710, 1711 |
| 1710 | 1709, 1711 |
| 1711 | 1709, 1710, 1712 |
| 1712 | 1711, 1713 |
| 1713 | 1712, 1714 |
| 1714 | 1713, 1715 |
| 1715 | 1714, 1716 |
| 1716 | 1715, 1717 |
| 1717 | 1716 |
| 1718 | 1719 |
| 1719 | 1718, 1720 |
| 1720 | 1719, 1721 |
| 1721 | 1720, 1722 |
| 1722 | 1721, 1723 |
| 1723 | 1722, 1724 |
| 1724 | 1723, 1725 |
| 1725 | 1724, 1726 |
| 1726 | 1725, 1727 |
| 1727 | 1726, 1728 |

| BURDENED LOT No. | BENEFITING LOTS |
|------------------|------------------------------|
| 1728 | 1727 |
| 1729 | 1730, 1736, 1738, 1739, 1740 |
| 1730 | 1729, 1731, 1734, 1735 |
| 1731 | 1730, 1732, 1734 |
| 1732 | 1731, 1733, 1734 |
| 1733 | 1732, 1734 |
| 1734 | 1730, 1731, 1732, 1733, 1735 |
| 1735 | 1730, 1734, 1736 |
| 1736 | 1729, 1735, 1737, 1738 |
| 1737 | 1736, 1738 |
| 1738 | 1729, 1736, 1737, 1739 |
| 1739 | 1729, 1738, 1740 |
| 1740 | 1729, 1739 |
| 1741 | 1742 |
| 1742 | 1741, 1743 |
| 1743 | 1742, 1744 |
| 1744 | 1743, 1745 |
| 1745 | 1744, 1746 |
| 1746 | 1745, 1747 |
| 1747 | 1746, 1748 |
| 1748 | 1747, 1749 |
| 1749 | 1748, 1750 |
| 1750 | 1749, 1751 |
| 1751 | 1750, 1752 |
| 1752 | 1751, 1753 |
| 1753 | 1752 |

DESCRIPTION OF RESTRICTION

The registered proprietor or proprietors for the time being of any burdened lot on the Plan of Subdivision must not without the consent of the Responsible Authority build or allow to be built on the lot:

Memorandum of Common Provisions (MCP)

- Any building other than a building which has been constructed and sited in accordance with the Memorandum of Common Provisions registered in Dealing No. AA and which Memorandum of Common Provisions is incorporated in this plan.

The restrictions in paragraph 1 shall cease to burden any lot on the Plan of Subdivision with affect from 31st December 2036.



an company

© SMEC AUSTRALIA PTY LTD (ABN 47 065 475 149)
TOWER 4, LEVEL 20, 727 COLLINS STREET
DOCKLANDS VIC 3008

REF 2070s-17

ADRIAN THOMAS

VERSION C

ORIGINAL SHEET
SIZE: A3

SHEET 12