



CIVIL GEOTECHNICAL SERVICES
ABN 26 474 013 724
PO Box 678 Croydon Vic 3136
Telephone: 9723 0744 Facsimile: 9723 0799

1st May 2023

Our Reference: 22283:NB1536

Winslow Constructors Pty Ltd
50 Barry Road
CAMPBELLFIELD VIC 3061

Dear Sirs/Madams,

RE: LEVEL 1 EARTHWORKS INSPECTION AND TESTING
REDSTONE – STAGE 6 (SUNBURY)

Please find attached our Report No 22283/R001 which relates to the field density testing that was conducted within the filled allotments at the above subdivision. The level 1 inspections and associated field density testing was performed in May 2022.

The inspections and testing of the earthworks was undertaken in general accordance with the Level 1 requirements of AS 3798 - Guidelines on Earthworks for Commercial and Residential Developments.

The site inspection and testing was performed by experienced geotechnicians from this office. Any areas that were deemed unsatisfactory were reworked and retested under their supervision. The testing was performed to the relevant Australian Standards and the accompanying test reports carry NATA endorsement. The attached compaction results, which were located randomly throughout the fill profile, are considered to be representative of the bulk fill materials that were placed across the reported allotments by Winslow Constructors during the aforementioned period. The approximate locations of the field density tests can be seen on the attached plan (Figure 1).

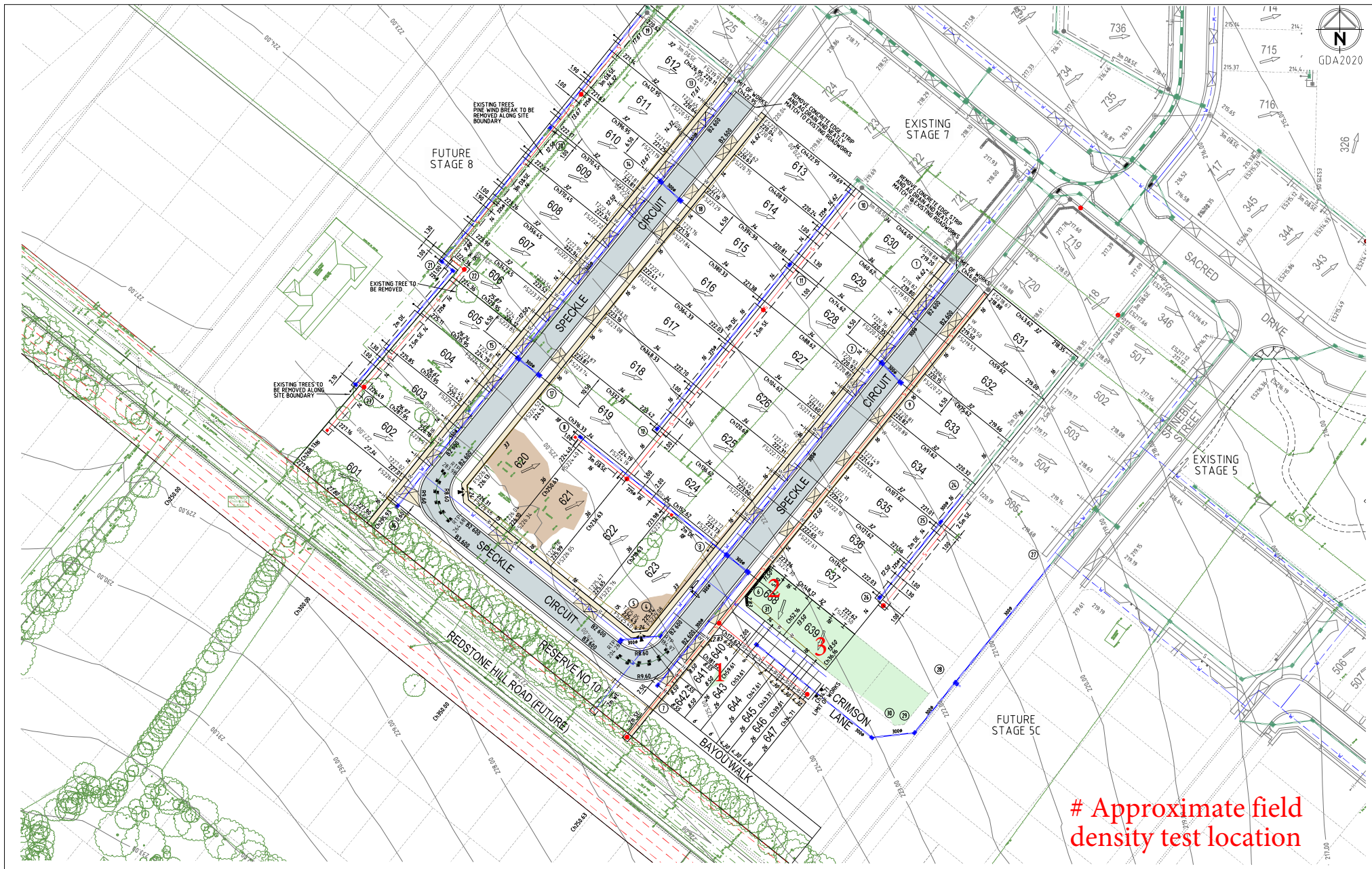
We are of the view that the bulk fill materials that have been placed across the reported allotments by Winslow Constructors during the aforementioned period can be considered as having been placed in a controlled manner to a minimum density ratio of 95% (standard compactive effort).

Please contact the undersigned if you require any additional information.

Civil Geotechnical Services

Nick Brock

FIGURE 1



| | | | | |
|-----|------------------|--|------------------|----------|
| | | | | |
| | | | | |
| | | | | |
| | | | | |
| | | | | |
| A | ISSUE TO COUNCIL | | M.T.S | 13/09/21 |
| Rev | Amendments | | Approved Date | |



© Spire Australia Pty Ltd All Rights Reserved
This document is produced by Spire Australia Pty Ltd solely for the benefit of and use by the client in accordance with the terms of the retainer. Spire Australia Pty Ltd does not and shall not assume any responsibility or liability whatsoever to any third party arising out of any use or reliance by third party on the content of this document.

spiire

spire.com.au ABN 55 050 029 635



Designed
R. WEINBER
Authorised
M. TOOMER-SMITH

Redstone.
Your world awaits

D CAMERON
Date
09/09/21

**REDSTONE ESTATE
STAGE 6
ROAD & DRAINAGE FACE PLAN**

VILLAWOOD PROPERTIES
HUME CITY COUNCIL

PRELIMINARY Drg No
305917R02



COMPACTION ASSESSMENT

CIVIL GEOTECHNICAL SERVICES

6 - 8 Rose Avenue, Croydon 3136

Job No 22283
Report No 22283/R001
Date Issued 10/05/2022

| | | | |
|----------|--|-------------|----------|
| Client | WINSLOW CONSTRUCTORS PTY LTD (CAMPBELLFIELD) | Tested by | AM |
| Project | REDSTONE ESTATE - STAGE 6 | Date tested | 04/05/22 |
| Location | SUNBURY | Checked by | JHF |

| | | | | |
|---------|------------|-----------------|--------|-------------|
| Feature | EARTHWORKS | Layer thickness | 200 mm | Time: 15:41 |
|---------|------------|-----------------|--------|-------------|

Test procedure AS 1289.2.1.1 & 5.8.1

| Test No | 1 | 2 | 3 | - | - | - |
|------------------------------------|-------------------|-------------------|-------------------|---|---|---|
| Location | REFER TO FIGURE 1 | REFER TO FIGURE 1 | REFER TO FIGURE 1 | | | |
| Approximate depth below FSL | | | | | | |
| Measurement depth mm | 175 | 175 | 175 | - | - | - |
| Field wet density t/m ³ | 1.80 | 1.78 | 1.75 | - | - | - |
| Field moisture content % | 30.0 | 29.5 | 31.4 | - | - | - |

Test procedure AS 1289.5.7.1

| Test No | 1 | 2 | 3 | - | - | - |
|--|----------|------|------|---|---|---|
| Compactive effort | Standard | | | | | |
| Oversize rock retained on sieve mm | 19.0 | 19.0 | 19.0 | - | - | - |
| Percent of oversize material wet | 0 | 0 | 0 | - | - | - |
| Peak Converted Wet Density t/m ³ | 1.84 | 1.83 | 1.81 | - | - | - |
| Adjusted Peak Converted Wet Density t/m ³ | - | - | - | - | - | - |
| Optimum Moisture Content % | 30.5 | 32.0 | 33.5 | - | - | - |

| | | | | | | |
|--|----------|----------|----------|---|---|---|
| Moisture Variation From Optimum Moisture Content | 1.0% dry | 2.5% dry | 2.0% dry | - | - | - |
|--|----------|----------|----------|---|---|---|

density and moisture ratio results relate only to the soil to the depth of test and not to the full depth of the layer

| | | | | | | | |
|----------------------------|---|------|------|------|---|---|---|
| Density Ratio (R_{HD}) | % | 98.0 | 97.5 | 96.5 | - | - | - |
|----------------------------|---|------|------|------|---|---|---|

Material description

No 1 - 3 Clay Fill

AVRLOT HILF V1.10 MAR 13



NATA Accredited Laboratory No 9909
Accredited for compliance with
ISO/IEC 17025 - Testing

Approved Signatory : Justin Fry