


<div>PLAN OF SUBDIVISION</div> <div>Under Section 37 of the Subdivision Act 1988</div>			<div>LUV USE ONLY</div> <div>EDITION</div>	<div>PLAN NUMBER</div> <div>PS905192T/S7</div>		
<div>LOCATION OF LAND</div> <div>PARISH: TARNEIT</div> <div>TOWNSHIP: -</div> <div>SECTION: 8</div> <div>CROWN ALLOTMENT: A1 (PART)</div> <div>CROWN PORTION: -</div> <div>TITLE REFERENCES: Vol. Fol.</div> <div>LAST PLAN REFERENCE/S: PS905192T/S6 (LOT S7)</div> <div>POSTAL ADDRESS: 1071 SAYERS ROAD</div> <div>(At time of subdivision) TARNEIT, 3029</div> <div>MGA94 Co-ordinates E 292 110</div> <div>(of approx centre of N 5 807 890</div> <div>land in plan) ZONE 55</div>			<div>COUNCIL NAME: WYNDHAM CITY COUNCIL</div>			
VESTING OF ROADS AND/OR RESERVES			NOTATIONS			
IDENTIFIER	COUNCIL/BODY/PERSON		<div>LOTS ON THIS PLAN MAY BE AFFECTED BY ONE OR MORE OWNERS CORPORATIONS (SEE OWNERS CORPORATION SEARCH REPORT FOR DETAILS).</div> <div>LOTS 1 TO 2000 (BOTH INCLUSIVE) HAVE BEEN OMITTED FROM THIS PLAN.</div> <div>LOTS ON THIS PLAN MAY BE AFFECTED BY ONE OR MORE RESTRICTIONS. SEE SHEET 13 FOR FURTHER DETAILS.</div> <div>LOT S8 IS IN TWO PARTS.</div> <div>EASEMENTS E-2, E-5, E-6, E-7, E-13, E-15, E-21, E-22, E-24, E-25, E-26 AND E-28 TO E-30 (BOTH INCLUSIVE) HAVE BEEN OMITTED FROM THIS PLAN.</div> <div>OTHER PURPOSE OF THE PLAN: REMOVAL OF THAT PART OF DRAINAGE & SEWERAGE EASEMENT E-17 ON PS905192T/S6 AS AFFECTS BARCELONA WAY AND IMPLEXA DRIVE ON THIS PLAN.</div> <div>REMOVAL OF POWERLINE EASEMENT E-29 ON PS905192T/S6 AS AFFECTS IMPLEXA DRIVE ON THIS PLAN.</div> <div>REMOVAL OF DRAINAGE, SEWERAGE & POWERLINE EASEMENT E-30 ON PS905192T/S6 AS AFFECTS IMPLEXA DRIVE ON THIS PLAN.</div> <div>GROUND'S FOR REMOVAL: BY AGREEMENT OF ALL INTERESTED PARTIES UPON REGISTRATION OF THIS PLAN PURSUANT TO SECTION 6(1)(k)(iv) OF THE SUBDIVISION ACT 1988.</div>			
ROAD R8	WYNDHAM CITY COUNCIL					
RESERVE No.13	WYNDHAM CITY COUNCIL					
RESERVE No.14	WYNDHAM CITY COUNCIL					
RESERVE No.15	WYNDHAM CITY COUNCIL					
NOTATIONS			<div>DEPTH LIMITATION: 15.24m BELOW THE SURFACE.</div> <div>STAGING: THIS IS A STAGED SUBDIVISION. PLANNING PERMIT No. WYP10817</div> <div>SURVEY: THIS PLAN IS BASED ON SURVEY.</div> <div>THIS SURVEY HAS BEEN CONNECTED TO PERMANENT MARKS No(s): PM17 (WERRIBEE) AND PM18, PM134, PM217 & PM760 (TARNEIT)</div> <div>PROCLAIMED SURVEY AREA:</div> <div>ALAMORA 20</div> <div>2.173ha</div> <div>18 LOTS</div>			
DEPTH LIMITATION: 15.24m BELOW THE SURFACE.						
STAGING: THIS IS A STAGED SUBDIVISION. PLANNING PERMIT No. WYP10817						
SURVEY: THIS PLAN IS BASED ON SURVEY.						
THIS SURVEY HAS BEEN CONNECTED TO PERMANENT MARKS No(s): PM17 (WERRIBEE) AND PM18, PM134, PM217 & PM760 (TARNEIT)						
PROCLAIMED SURVEY AREA:						
ALAMORA 20						
2.173ha						
18 LOTS						
EASEMENT INFORMATION						
LEGEND A-Appurtenant Easement E-Encumbering Easement R-Encumbering Easement (Road)						
IMPLIED EASEMENTS UNDER SECTION 12(2) OF THE SUBDIVISION ACT 1988 APPLY TO ALL LOTS ON THIS PLAN AND AS SET ASIDE ON LOT A ON PS841640V.						
Easement Reference	Purpose	Width (Metres)	Origin	Land Benefited/In Favour Of		
E-1	DRAINAGE SEWERAGE WATER SUPPLY (THROUGH UNDERGROUND PIPES)	SEE PLAN SEE PLAN SEE PLAN	PS905192T PS905192T PS905192T	WYNDHAM CITY COUNCIL GREATER WESTERN WATER CORPORATION GREATER WESTERN WATER CORPORATION		
E-3	SEWERAGE	SEE PLAN	PS905192T	GREATER WESTERN WATER CORPORATION		
E-4	DRAINAGE SEWERAGE	SEE PLAN SEE PLAN	PS905192T PS905192T	WYNDHAM CITY COUNCIL GREATER WESTERN WATER CORPORATION		
2070S-20 VER J.DWG AA/AA			SEE SHEET 2 FOR CONTINUATION			
<div>smec</div> <div>an  company</div> <div>© SMEC AUSTRALIA PTY LTD (ABN 47 065 475 149) TOWER 4, LEVEL 20, 727 COLLINS STREET DOCKLANDS VIC 3008</div>		SURVEYOR REF: 2070s-20		ORIGINAL SHEET SIZE: A3	SHEET 1 OF 13	
		ADRIAN THOMAS		VERSION J		

PLAN OF SUBDIVISION

Under Section 37 of the Subdivision Act 1988

PLAN NUMBER

PS905192T/S7

Easement Reference	Purpose	Width (Metres)	Origin	Land Benefited/In Favour Of
E-8	SEWERAGE	SEE PLAN	PS905192T/S3	GREATER WESTERN WATER CORPORATION
E-9	DRAINAGE	SEE PLAN	PS905192T/S3	WYNDHAM CITY COUNCIL
	SEWERAGE	SEE PLAN	PS905192T/S3	GREATER WESTERN WATER CORPORATION
E-10	DRAINAGE	SEE PLAN	PS905192T/S5	WYNDHAM CITY COUNCIL
E-11	SEWERAGE	SEE PLAN	PS905192T/S4	GREATER WESTERN WATER CORPORATION
E-12	DRAINAGE	SEE PLAN	PS905192T/S4	WYNDHAM CITY COUNCIL
	SEWERAGE	SEE PLAN	PS905192T/S4	GREATER WESTERN WATER CORPORATION
E-14	DRAINAGE	SEE PLAN	PS905192T/S5	WYNDHAM CITY COUNCIL
	SEWERAGE	SEE PLAN	PS905192T/S5	GREATER WESTERN WATER CORPORATION
E-16	SEWERAGE	SEE PLAN	PS905192T/S6	GREATER WESTERN WATER CORPORATION
E-17	DRAINAGE	SEE PLAN	PS905192T/S6	WYNDHAM CITY COUNCIL
	SEWERAGE	SEE PLAN	PS905192T/S6	GREATER WESTERN WATER CORPORATION
E-18	SEWERAGE	SEE PLAN	THIS PLAN	GREATER WESTERN WATER CORPORATION
E-19	DRAINAGE	SEE PLAN	THIS PLAN	WYNDHAM CITY COUNCIL
	SEWERAGE	SEE PLAN	THIS PLAN	GREATER WESTERN WATER CORPORATION
E-20	DRAINAGE	SEE PLAN	PS905192T/S4	WYNDHAM CITY COUNCIL
E-23	CREATION AND MAINTENANCE OF WETLANDS, FLOODWAY AND DRAINAGE AS SPECIFIED AND SET-OUT IN MEMORANDUM OF COMMON PROVISIONS NO. AA2741	SEE PLAN	PS905192T/S2	MELBOURNE WATER CORPORATION
E-27	WATER SUPPLY (THROUGH UNDERGROUND PIPES)	SEE PLAN	THIS PLAN	GREATER WESTERN WATER CORPORATION
	DISTRIBUTION AND/OR TRANSMISSION OF GAS	SEE PLAN	THIS PLAN (SECTION 146 GAS INDUSTRY ACT 2001)	AUSNET GAS SERVICES PTY LTD
E-31	WATER SUPPLY (THROUGH UNDERGROUND PIPES)	SEE PLAN	THIS PLAN	GREATER WESTERN WATER CORPORATION
E-32	WATER SUPPLY (THROUGH UNDERGROUND PIPES)	SEE PLAN	THIS PLAN	GREATER WESTERN WATER CORPORATION
	SEWERAGE	SEE PLAN	THIS PLAN	GREATER WESTERN WATER CORPORATION
	DISTRIBUTION AND/OR TRANSMISSION OF GAS	SEE PLAN	THIS PLAN (SECTION 146 GAS INDUSTRY ACT 2001)	AUSNET GAS SERVICES PTY LTD



© SMEC AUSTRALIA PTY LTD (ABN 47 065 475 149)
TOWER 4, LEVEL 20, 727 COLLINS STREET
DOCKLANDS VIC 3008
REF 2070s-20

ADRIAN THOMAS VERSION J

ORIGINAL SHEET
SIZE: A3

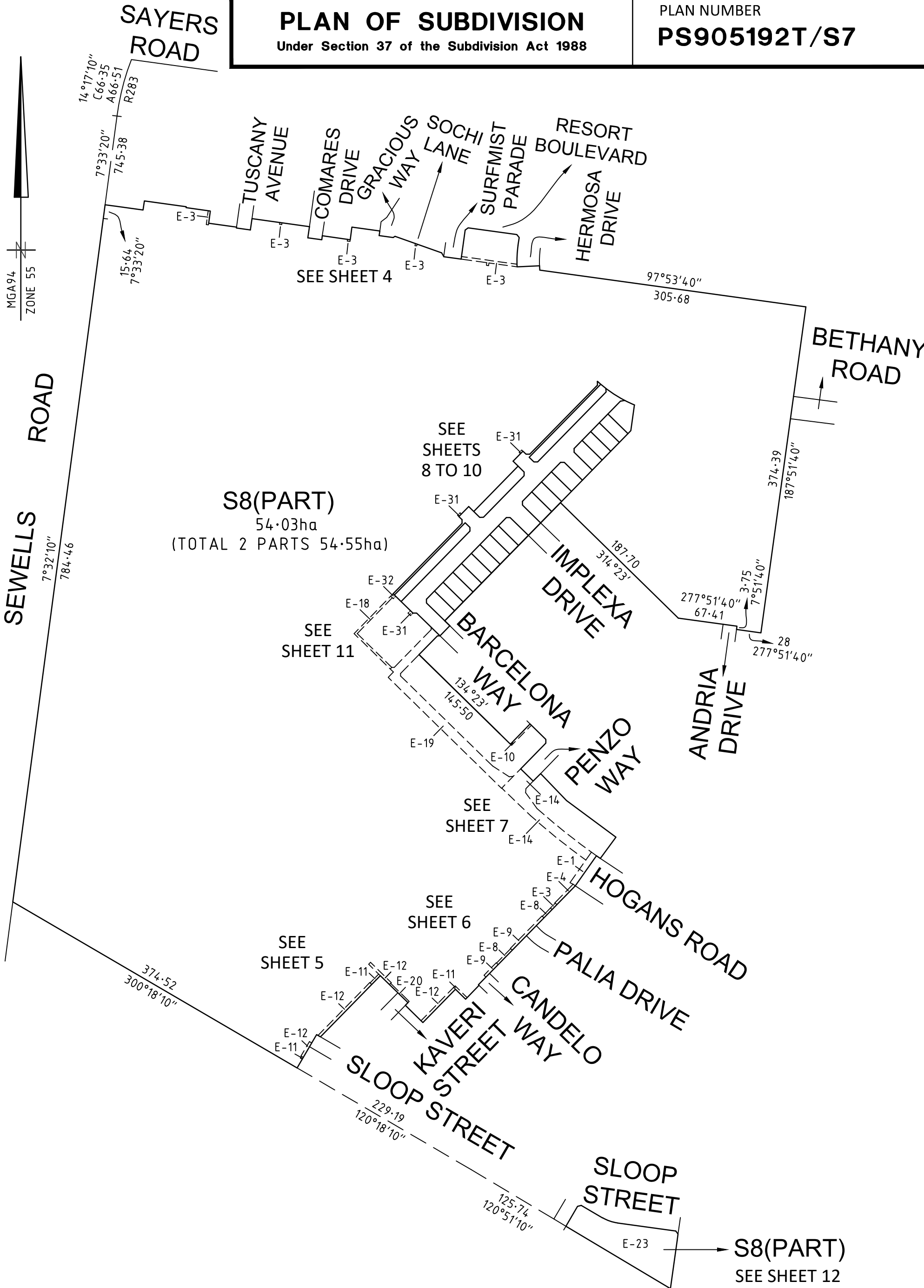
SHEET 2

PLAN OF SUBDIVISION

Under Section 37 of the Subdivision Act 1988

PLAN NUMBER

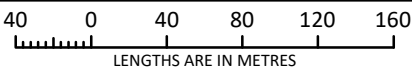
PS905192T/S7



an company

© SMEC AUSTRALIA PTY LTD (ABN 47 065 475 149)
TOWER 4, LEVEL 20, 727 COLLINS STREET
DOCKLANDS VIC 3008 REF 2070s-20

SCALE
1:4000



ADRIAN THOMAS

VERSION J

ORIGINAL SHEET
SIZE: A3

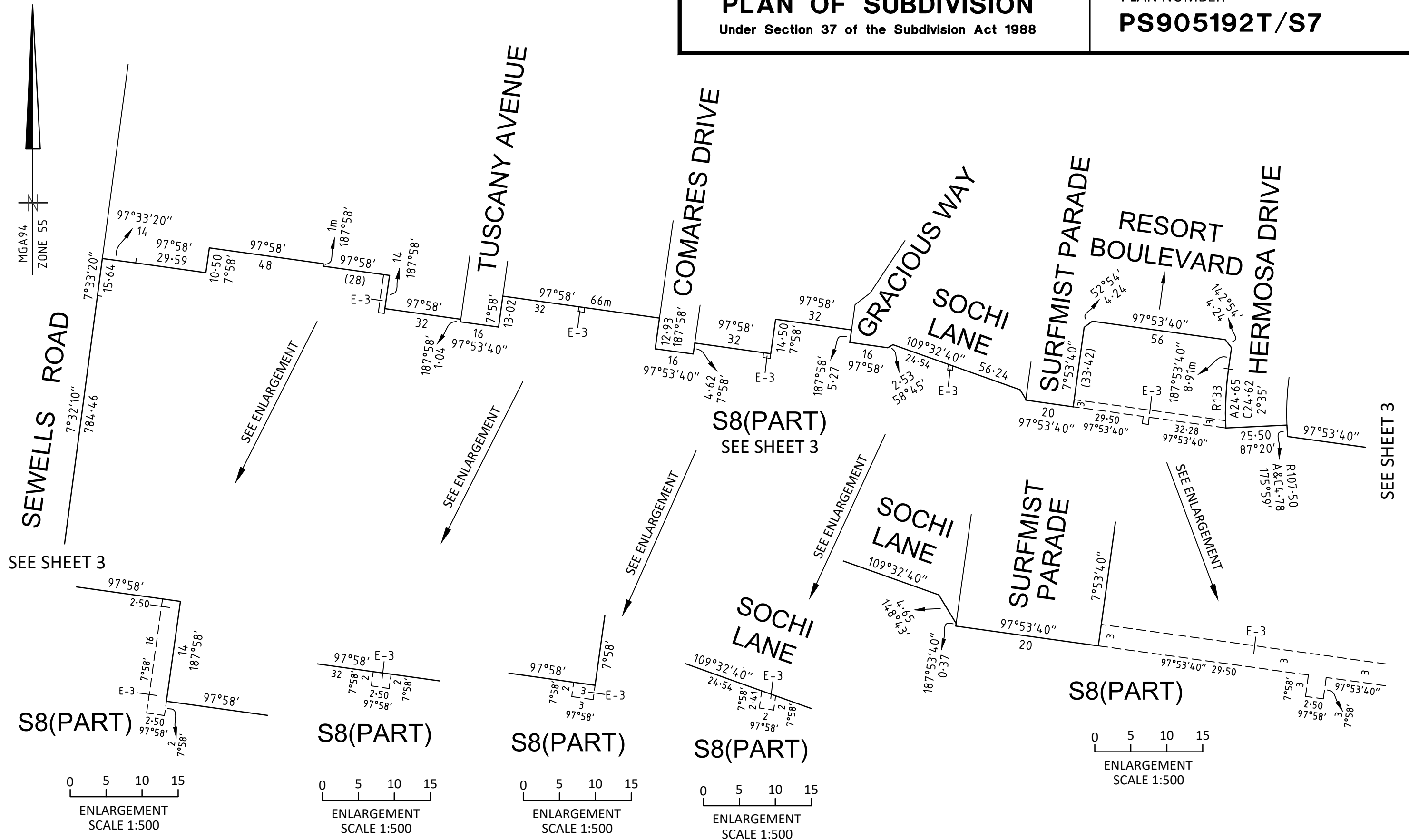
SHEET 3

PLAN OF SUBDIVISION

Under Section 37 of the Subdivision Act 1988

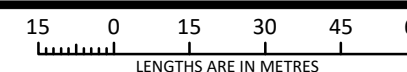
PLAN NUMBER

PS905192T/S7



© SMEC AUSTRALIA PTY LTD (ABN 47 065 475 149)
TOWER 4, LEVEL 20, 727 COLLINS STREET
DOCKLANDS VIC 3008 REF 2070s-20

SCALE
1:1500



ORIGINAL SHEET
SIZE A3

SHEET 4

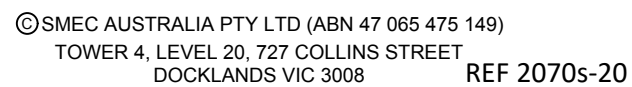
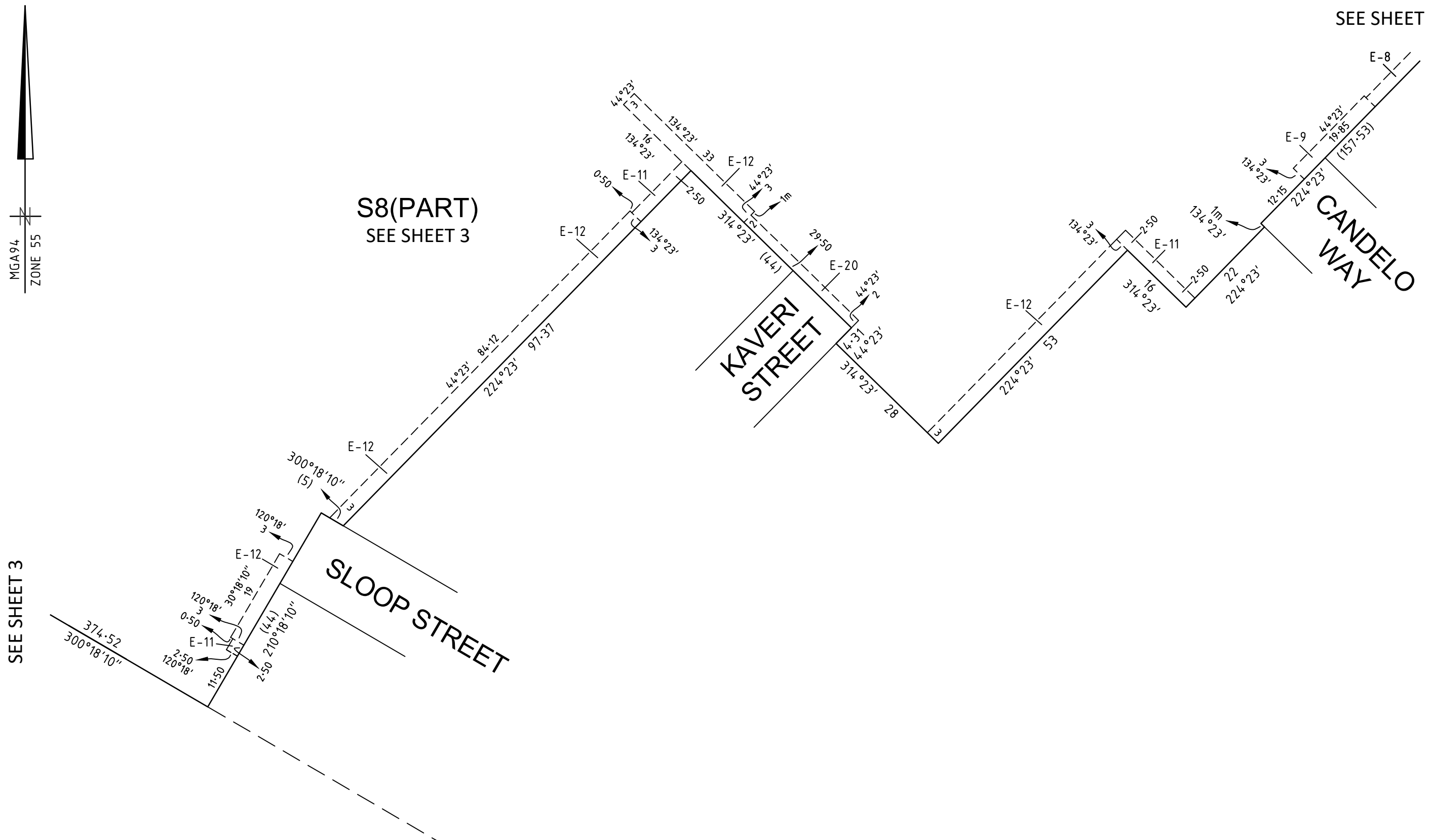
ADRIAN THOMAS

VERSION J

Under Section 37 of the Subdivision Act 1988

PS905192T/S7

CANDELO
WAY



7.5 0 7.5 15 22.5 30

LENGTHS ARE IN METRES

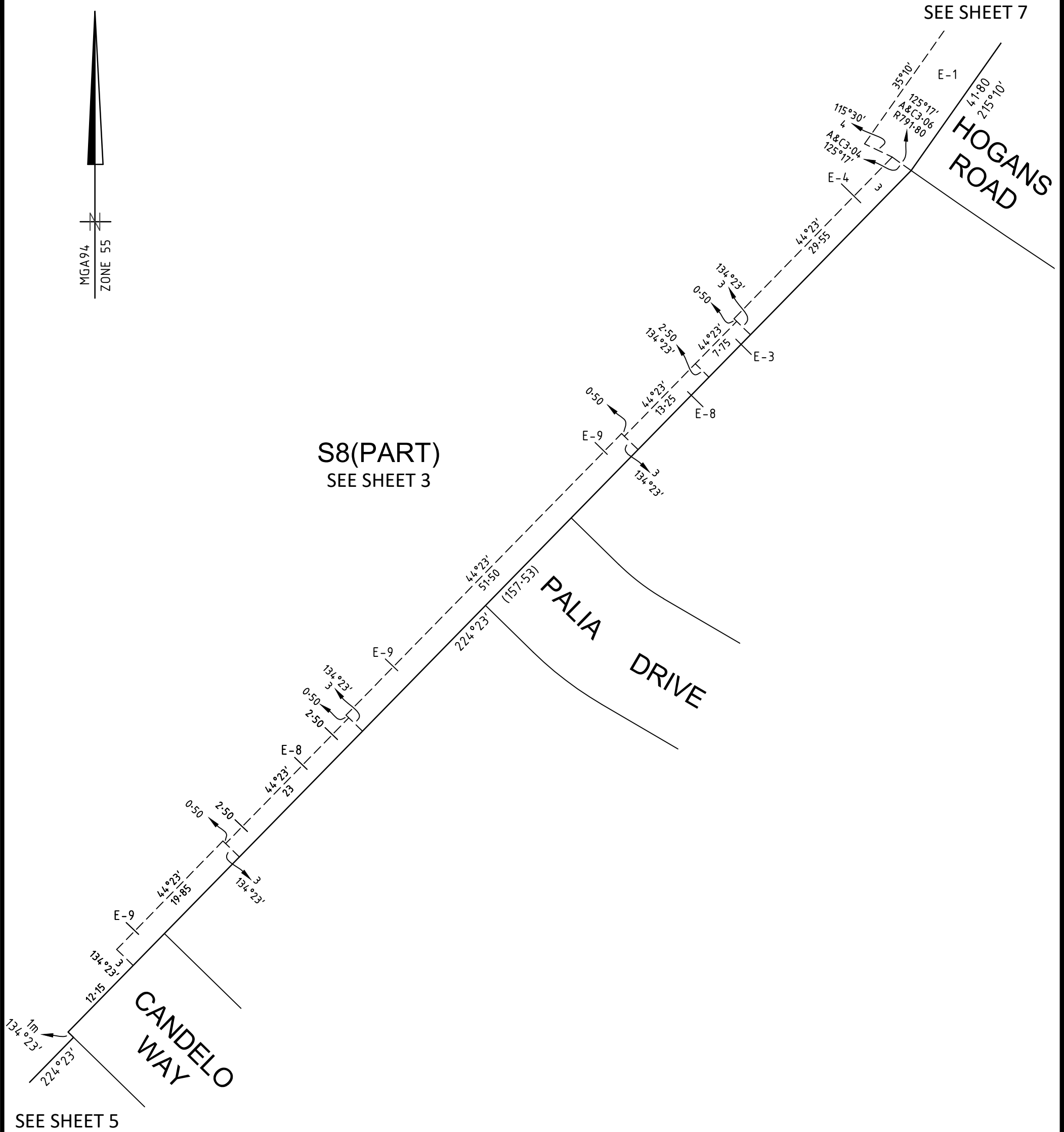
SHEET 5

VERSION J

PLAN OF SUBDIVISION

Under Section 37 of the Subdivision Act 1988

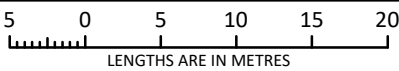
PLAN NUMBER
PS905192T/S7



an company

© SMEC AUSTRALIA PTY LTD (ABN 47 065 475 149)
TOWER 4, LEVEL 20, 727 COLLINS STREET
DOCKLANDS VIC 3008 REF 2070s-20

SCALE
1:500



ORIGINAL SHEET
SIZE: A3

SHEET 6

ADRIAN THOMAS

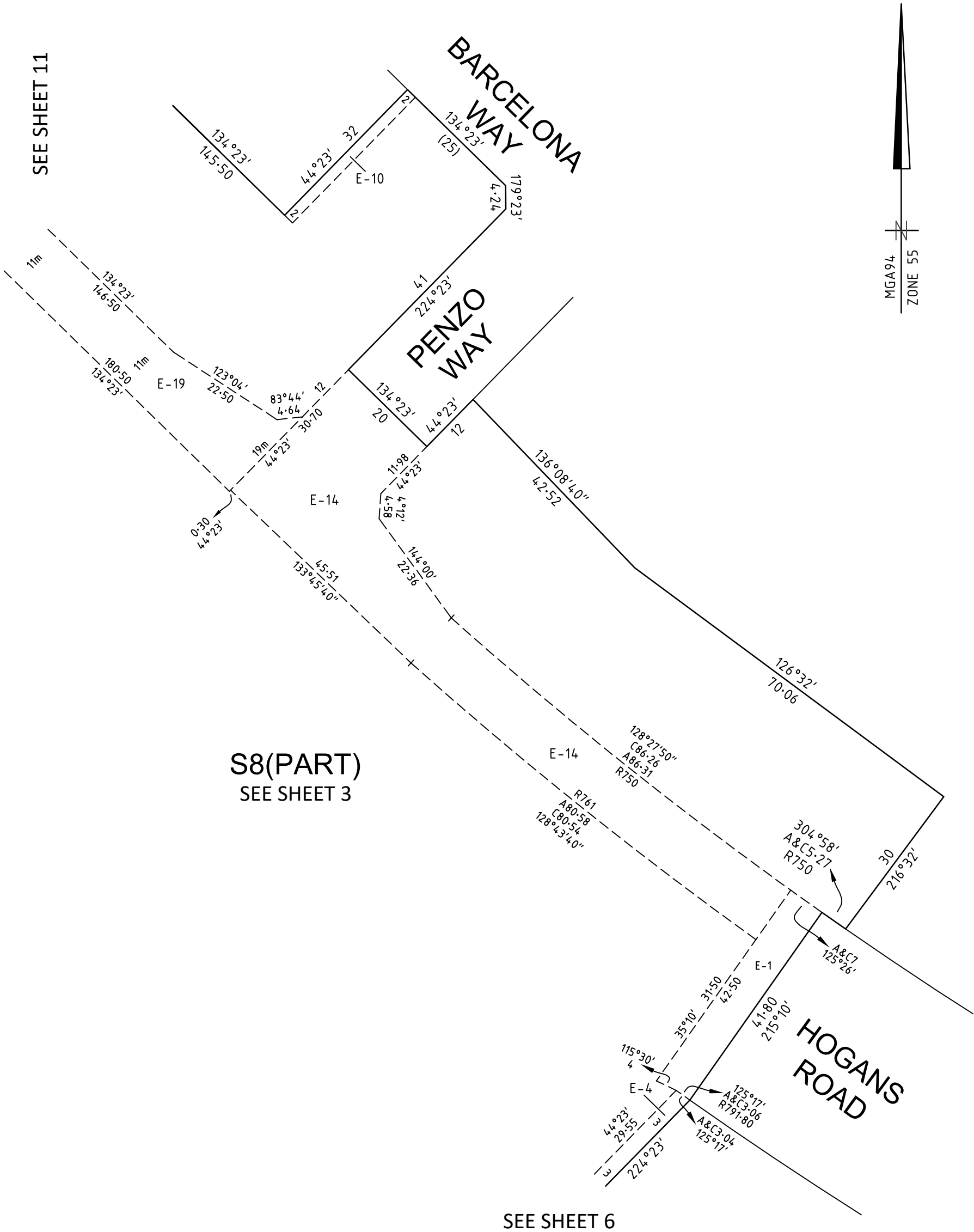
VERSION J

PLAN OF SUBDIVISION

Under Section 37 of the Subdivision Act 1988

PLAN NUMBER

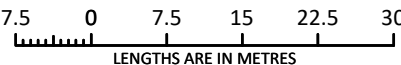
PS905192T/S7



an company

© SMEC AUSTRALIA PTY LTD (ABN 47 065 475 149)
TOWER 4, LEVEL 20, 727 COLLINS STREET
DOCKLANDS VIC 3008
REF 2070s-20

SCALE
1:750



ADRIAN THOMAS

VERSION J

ORIGINAL SHEET
SIZE: A3

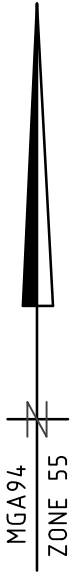
SHEET 7

PLAN OF SUBDIVISION

Under Section 37 of the Subdivision Act 1988

PLAN NUMBER

PS905192T/S7



S8(PART)
SEE SHEET 3

TIERRA
BOULEVARD
R8

No.13

RESERVE

BOULEVARD

2001

658m²

2002

2003

2004

2005

TIERRA
SANTORIA
STREET
R8

2006

2007

2008

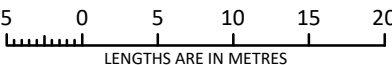
S8(PART)
SEE SHEET 3

SEE SHEET 9



© SMEC AUSTRALIA PTY LTD (ABN 47 065 475 149)
TOWER 4, LEVEL 20, 727 COLLINS STREET
DOCKLANDS VIC 3008 REF 2070s-20

SCALE
1:500



ORIGINAL SHEET
SIZE: A3

SHEET 8

ADRIAN THOMAS

VERSION J

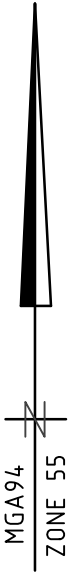
PLAN OF SUBDIVISION

Under Section 37 of the Subdivision Act 1988

PLAN NUMBER

PS905192T/S7

SEE SHEET 8



S8(PART)
SEE SHEET 3

2006

2007

2008

2009

2010

2011

2012

2013

2014

S8(PART)
SEE SHEET 3

Tierra Boulevard

Tierra Boulevard

MANAIR VIEW

BOULEVARD

IMPLEXA DRIVE

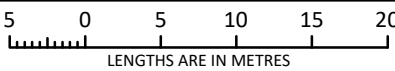
IMPLEXA DRIVE

SEE SHEET 10



© SMEC AUSTRALIA PTY LTD (ABN 47 065 475 149)
TOWER 4, LEVEL 20, 727 COLLINS STREET
DOCKLANDS VIC 3008 REF 2070s-20

SCALE
1:500



ORIGINAL SHEET
SIZE: A3

SHEET 9

ADRIAN THOMAS

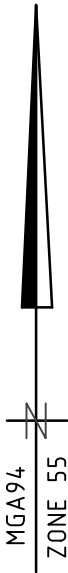
VERSION J

PLAN OF SUBDIVISION

Under Section 37 of the Subdivision Act 1988

PLAN NUMBER

PS905192T/S7



SEE SHEET 9

RESERVE
No.14

HASDEO
WAY

BOULEVARD

2010

2011

2012

2013

2014

2015

2016

2017

2018

BARCELONA
WAY

BARCELONA
WAY

S8(PART)
SEE SHEET 3

TIERRA
BOULEVARD

RESERVE
No.15

RESERVE

S8(PART)
SEE SHEET 3

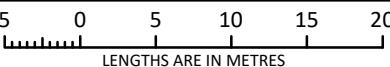
SEE SHEET 9

SEE SHEET 11



© SMEC AUSTRALIA PTY LTD (ABN 47 065 475 149)
TOWER 4, LEVEL 20, 727 COLLINS STREET
DOCKLANDS VIC 3008 REF 2070s-20

SCALE
1:500



ORIGINAL SHEET
SIZE: A3

SHEET 10

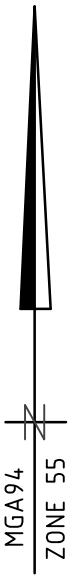
ADRIAN THOMAS

VERSION J

Under Section 37 of the Subdivision Act 1988

PLAN NUMBER

PS905192T/S7



PLAN OF SUBDIVISION

Under Section 37 of the Subdivision Act 1988

PLAN NUMBER

PS905192T/S7

SEE SHEET 3

**WARANA
WAY**

SLOOP

STREET

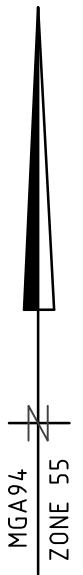
SEE SHEET 3

S8(PART)

5235m²

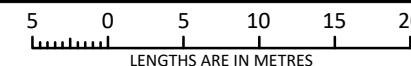
E-23

E-23



© SMEC AUSTRALIA PTY LTD (ABN 47 065 475 149)
TOWER 4, LEVEL 20, 727 COLLINS STREET
DOCKLANDS VIC 3008 REF 2070s-20

SCALE
1:500



ORIGINAL SHEET
SIZE A3

SHEET 12

ADRIAN THOMAS

VERSION J

PLAN OF SUBDIVISION

Under Section 37 of the Subdivision Act 1988

PLAN NUMBER

PS905192T/S7

Upon registration of this plan the following restrictions are created:

The registered proprietors of the burdened land covenant with the registered proprietors of the benefited land as set out in the restriction with the intent that the burden of the restriction runs with and binds the burdened land and the benefit of the restriction is annexed to and runs with the benefited land.

CREATION OF RESTRICTION A

Table of Land Burdened and Land Benefited:

BURDENED LOT No.	BENEFITING LOTS
2001	2002
2002	2001, 2003
2003	2002, 2004
2004	2003, 2005
2005	2004
2006	2007
2007	2006, 2008
2008	2007, 2009
2009	2008
2010	2011
2011	2010, 2012
2012	2011, 2013
2013	2012, 2014
2014	2013, 2015
2015	2014, 2016
2016	2015, 2017
2017	2016, 2018
2018	2017

DESCRIPTION OF RESTRICTION

The registered proprietor or proprietors for the time being of any burdened lot on the Plan of Subdivision must not without the consent of the Responsible Authority build or allow to be built on the lot:

Memorandum of Common Provisions (MCP)

1.
- Any building other than a building which has been constructed and sited in accordance with the Memorandum of Common Provisions registered in Dealing No. AA010482 and which Memorandum of Common Provisions is incorporated in this plan.

The restriction shall cease to burden any lot on the Plan of Subdivision with affect from 31st December 2035.