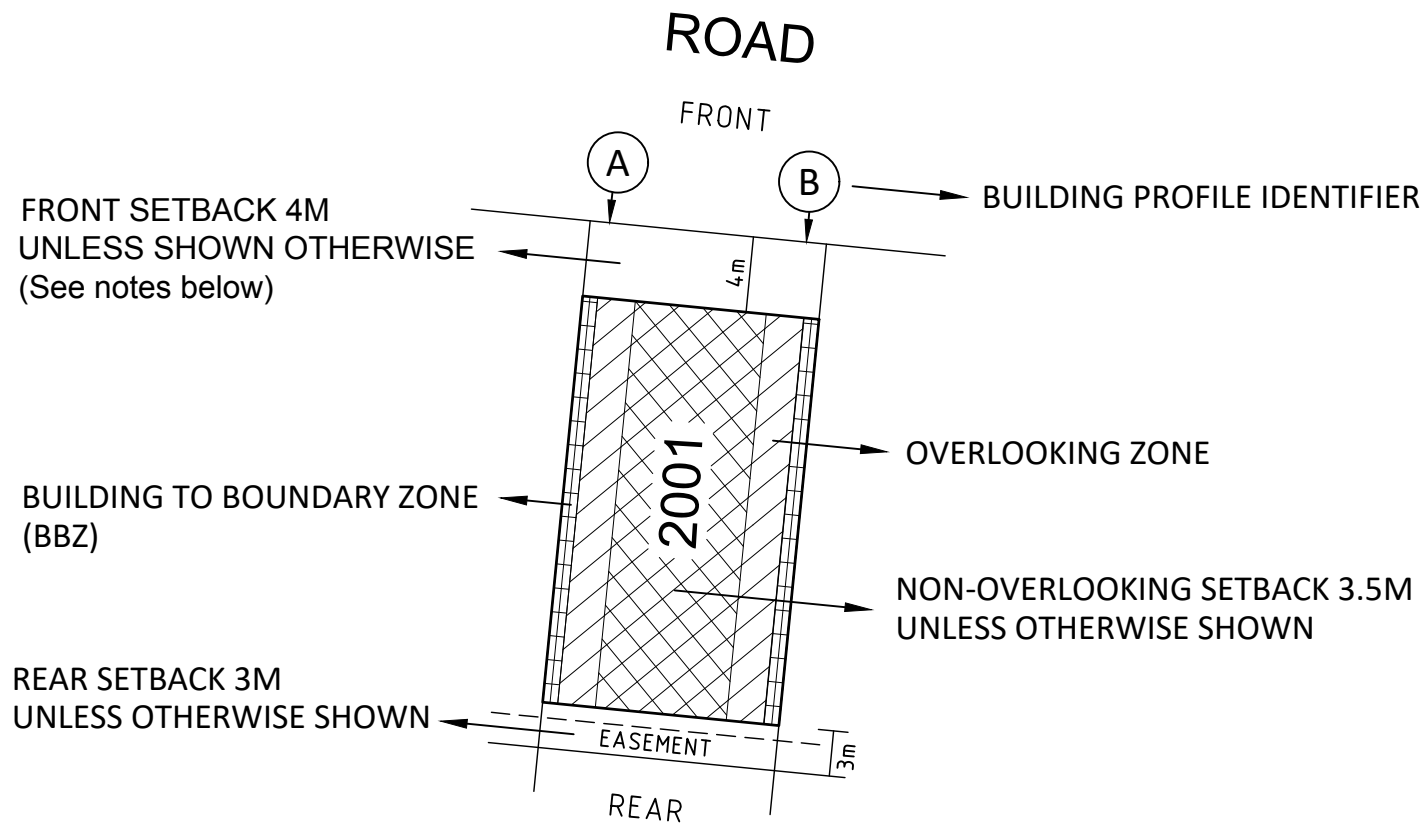


## BUILDING ENVELOPE PLAN

### LEGEND

#### EXAMPLE OF TYPICAL BUILDING ENVELOPE SETBACKS



#### NOTATIONS

- The front and side setbacks are measured to the outermost walls of the buildings.
- Garages must be setback a minimum of 5.0m from the front street boundary unless otherwise noted.
- Walls less than 1.0m from the boundary must be within 200mm of the boundary.
- Building to Boundary Zone to one boundary only unless terrace profile nominated.

#### ADDITIONAL NOTATIONS (for Lots marked with \*):

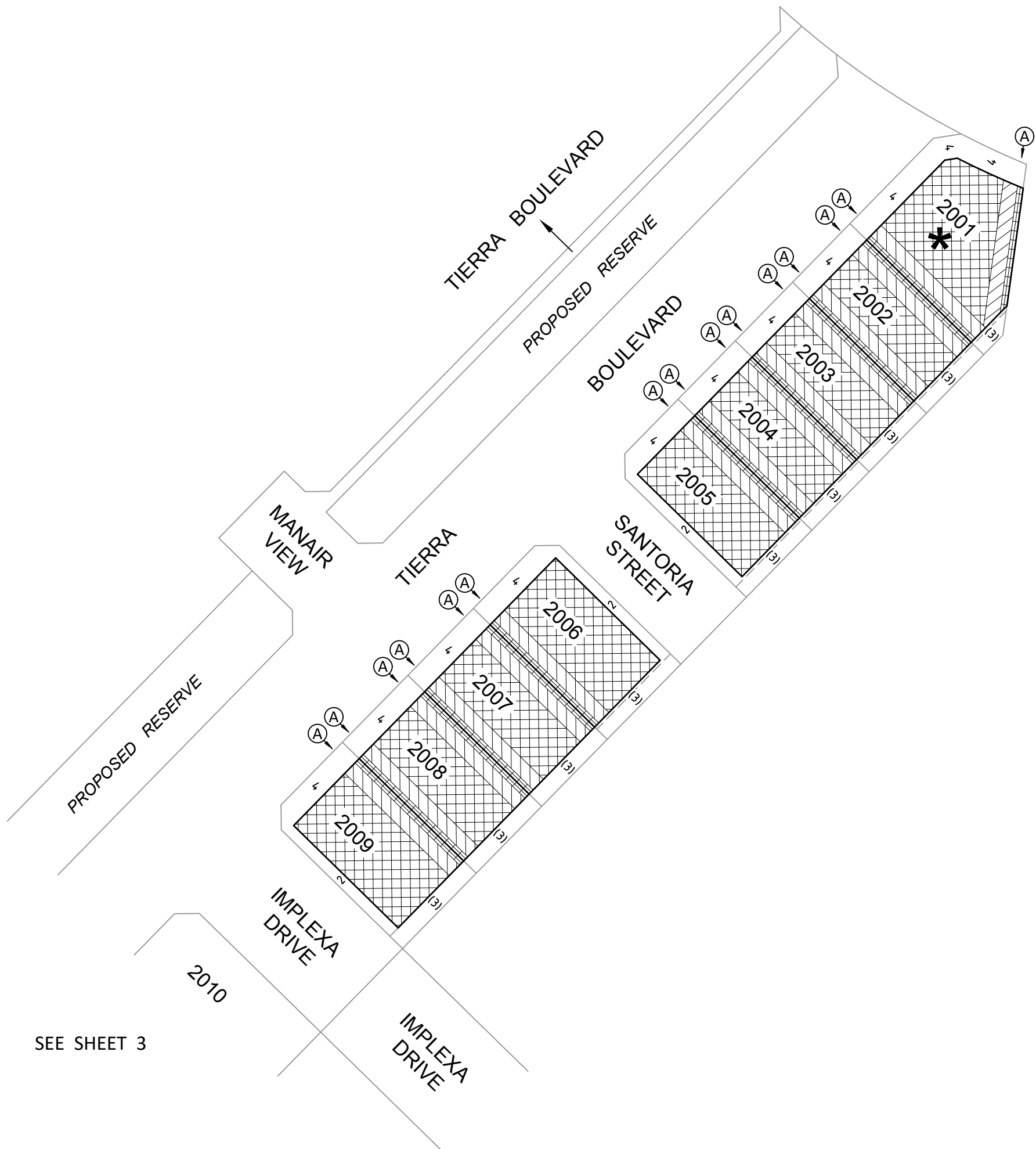
- With the exception of garages with access from a laneway, garages must be located or setback behind the front facade of the home.

Refer "Diagrams and Plans" in this document for further definitions.

	Single Storey Building Envelope Note: Garages must be setback a minimum 5m from main street frontage
	Building to Boundary Zone
	Overlooking Zone - Habitable room windows or raised open spaces are a source of overlooking
	Non-Overlooking Zone - Habitable room windows or raised open spaces are not a source of overlooking
	Double Storey Building Requirement

NOTATIONS

- Where a profile when applied covers an easement, the portion of the profile within the easement cannot be considered for approval / built upon. This may vary in the circumstances where building on the easement receives prior written consent by the relevant authority.
- The Building Envelopes on this plan are shown enclosed by continuous thick lines.
- Profile type (A) is contained in "Profile Diagram" in this document.



2070S-20 BE VER H.DWG AA/JC



© SMEC AUSTRALIA PTY LTD (ABN 47 065 475 149)  
 TOWER 4, LEVEL 20, 727 COLLINS STREET  
 DOCKLANDS VIC 3008 REF 2070S-20 BE

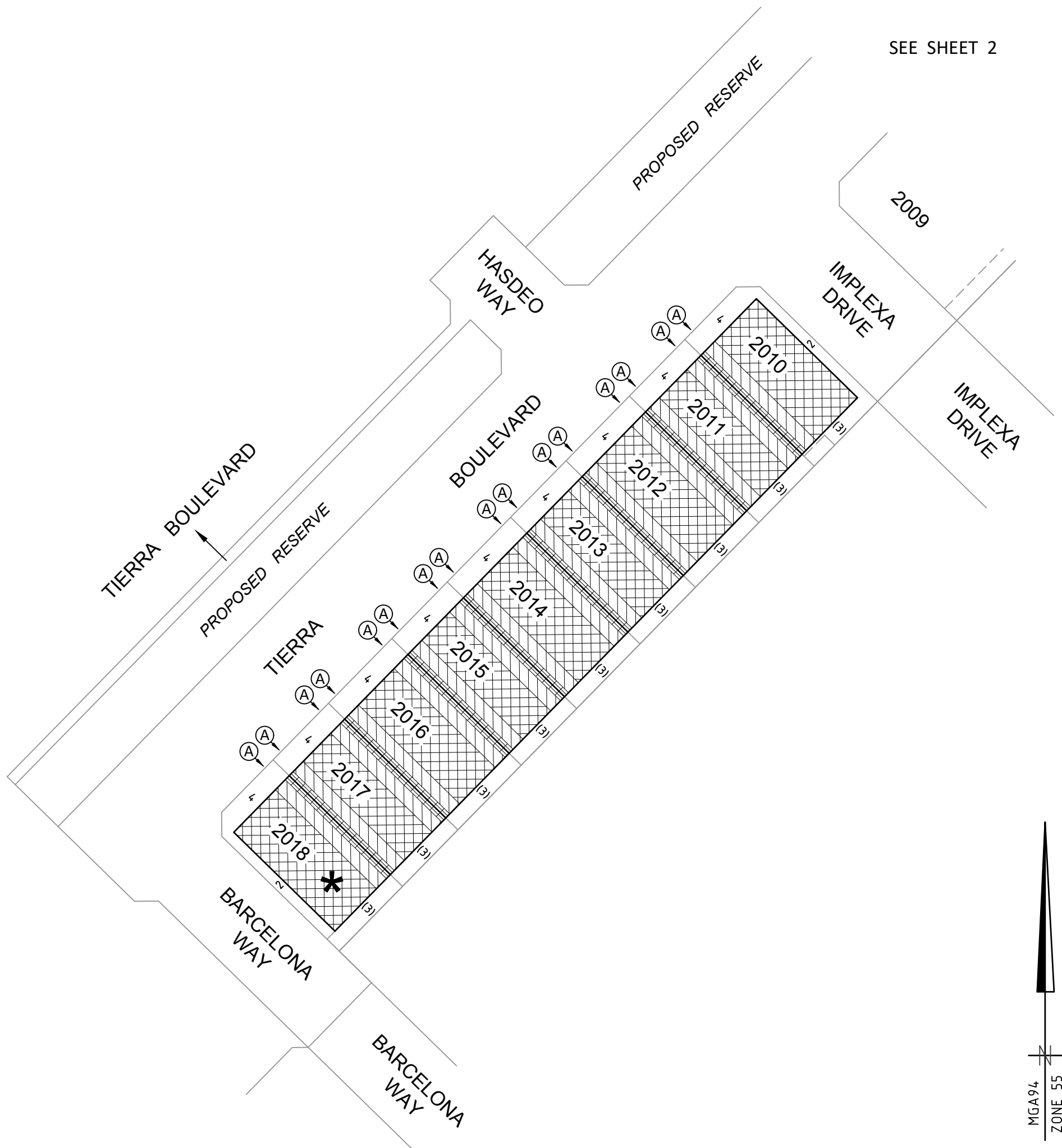
ADRIAN THOMAS	VERSION H
---------------	-----------

ORIGINAL SHEET  
 SIZE: A3

SHEET 2

NOTATIONS

- Where a profile when applied covers an easement, the portion of the profile within the easement cannot be considered for approval / built upon. This may vary in the circumstances where building on the easement receives prior written consent by the relevant authority.
- The Building Envelopes on this plan are shown enclosed by continuous thick lines.
- Profile type (A) is contained in "Profile Diagram" in this document.



2070S-20 BE VER H.DWG AA/JC



© SMEC AUSTRALIA PTY LTD (ABN 47 065 475 149)  
 TOWER 4, LEVEL 20, 727 COLLINS STREET  
 DOCKLANDS VIC 3008

REF 2070s-20 BE

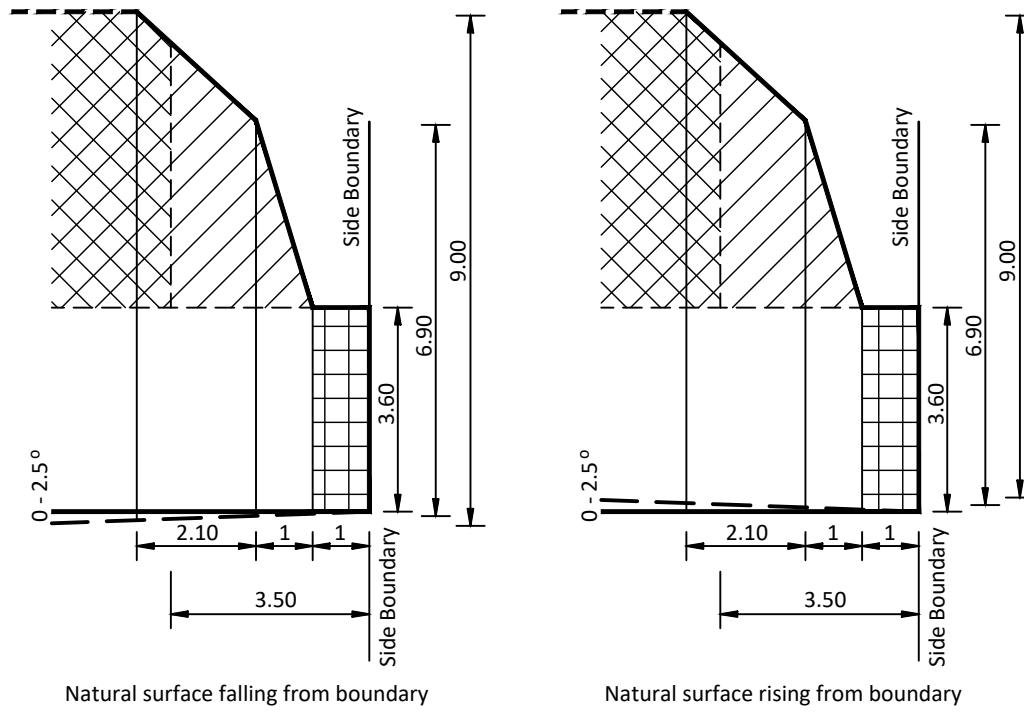
ADRIAN THOMAS	VERSION H
---------------	-----------

ORIGINAL SHEET  
 SIZE: A3

SHEET 3

PROFILE DIAGRAM

**A**



2070S-20 BE VER H.DWG AA/JC



an **su** company

© SMEC AUSTRALIA PTY LTD (ABN 47 065 475 149)  
 TOWER 4, LEVEL 20, 727 COLLINS STREET  
 DOCKLANDS VIC 3008

REF 2070S-20 BE

ADRIAN THOMAS

VERSION H

ORIGINAL SHEET  
 SIZE: A3

SHEET 4