

PLAN OF SUBDIVISION

Under Section 37 of the Subdivision Act 1988

LUV USE ONLY
EDITION

PLAN NUMBER
PS905192T/S8

LOCATION OF LAND

COUNCIL NAME: WYNDHAM CITY COUNCIL

PARISH: TARNEIT

TOWNSHIP: -

SECTION: 8

CROWN ALLOTMENT: A1 (PART)

CROWN PORTION: -

TITLE REFERENCES: Vol. Fol.

LAST PLAN REFERENCE/S: PS905192T/S7 (LOT S8)

POSTAL ADDRESS: 1071 SAYERS ROAD
(At time of subdivision) TARNEIT, 3029

MGA94 Co-ordinates E 292 290
(of approx centre of N 5 808 060
land in plan) ZONE 55

VESTING OF ROADS AND/OR RESERVES

NOTATIONS

| IDENTIFIER | COUNCIL/BODY/PERSON |
|--|--|
| ROAD R9 RESERVE No.9 RESERVE No.10 | WYNDHAM CITY COUNCIL POWERCOR AUSTRALIA LTD WYNDHAM CITY COUNCIL |

LOTS ON THIS PLAN MAY BE AFFECTED BY ONE OR MORE OWNERS CORPORATIONS (SEE OWNERS CORPORATION SEARCH REPORT FOR DETAILS).

LOTS 1 TO 1800 (BOTH INCLUSIVE) HAVE BEEN OMITTED FROM THIS PLAN.

LOTS ON THIS PLAN MAY BE AFFECTED BY ONE OR MORE RESTRICTIONS. SEE SHEET 13 FOR FURTHER DETAILS.

EASEMENTS E-2, E-5, E-6, E-7, E-13, E-15, E-16, E-17 AND E-22 TO E-30 (BOTH INCLUSIVE) HAVE BEEN OMITTED FROM THIS PLAN.

LOT S10 IS IN TWO PARTS.

NOTATIONS

DEPTH LIMITATION: 15.24m BELOW THE SURFACE.

STAGING: THIS IS A STAGED SUBDIVISION.
PLANNING PERMIT No. WYP10817

SURVEY: THIS PLAN IS BASED ON SURVEY.

THIS SURVEY HAS BEEN CONNECTED TO PERMANENT MARKS No(s):
PM17 (WERRIBEE) AND PM18, PM134, PM217 & PM760 (TARNEIT)
PROCLAIMED SURVEY AREA:

ALAMORA 18
4.408ha

11 LOTS

EASEMENT INFORMATION

LEGEND A-Appurtenant Easement E-Encumbering Easement R-Encumbering Easement (Road)

IMPLIED EASEMENTS UNDER SECTION 12(2) OF THE SUBDIVISION ACT 1988 APPLY TO ALL LOTS ON THIS PLAN AND AS SET ASIDE ON LOT A ON PS841640V.

| Easement Reference | Purpose | Width (Metres) | Origin | Land Benefited/In Favour Of |
|--------------------|---|----------------------------------|-------------------------------------|--|
| E-1 | DRAINAGE SEWERAGE WATER SUPPLY (THROUGH UNDERGROUND PIPES) | SEE PLAN SEE PLAN SEE PLAN | PS905192T PS905192T PS905192T | WYNDHAM CITY COUNCIL GREATER WESTERN WATER CORPORATION GREATER WESTERN WATER CORPORATION |
| E-3 | SEWERAGE | SEE PLAN | PS905192T | GREATER WESTERN WATER CORPORATION |
| E-4 | DRAINAGE SEWERAGE | SEE PLAN SEE PLAN | PS905192T PS905192T | WYNDHAM CITY COUNCIL GREATER WESTERN WATER CORPORATION |
| E-8 | SEWERAGE | SEE PLAN | PS905192T/S3 | GREATER WESTERN WATER CORPORATION |
| E-9 | DRAINAGE SEWERAGE | SEE PLAN SEE PLAN | PS905192T/S3 PS905192T/S3 | WYNDHAM CITY COUNCIL GREATER WESTERN WATER CORPORATION |
| E-10 | DRAINAGE | SEE PLAN | PS905192T/S5 | WYNDHAM CITY COUNCIL |
| E-11 | SEWERAGE | SEE PLAN | PS905192T/S4 | GREATER WESTERN WATER CORPORATION |
| E-12 | DRAINAGE SEWERAGE | SEE PLAN SEE PLAN | PS905192T/S4 PS905192T/S4 | WYNDHAM CITY COUNCIL GREATER WESTERN WATER CORPORATION |
| E-14 | DRAINAGE SEWERAGE | SEE PLAN SEE PLAN | PS905192T/S5 PS905192T/S5 | WYNDHAM CITY COUNCIL GREATER WESTERN WATER CORPORATION |

SEE SHEET 2 FOR CONTINUATION

2070S-18 VER E.DWG AA/AA



an su company

©SMEC AUSTRALIA PTY LTD (ABN 47 065 475 149)
TOWER 4, LEVEL 20, 727 COLLINS STREET
DOCKLANDS VIC 3008

SURVEYOR REF: **2070s-18**

ORIGINAL SHEET
SIZE: A3

SHEET 1 OF 13

ADRIAN THOMAS

VERSION E

PLAN OF SUBDIVISION

Under Section 37 of the Subdivision Act 1988

PLAN NUMBER
PS905192T/S8

| Easement Reference | Purpose | Width (Metres) | Origin | Land Benefited/In Favour Of |
|--------------------|---|----------------------|---|---|
| E-18 | SEWERAGE | SEE PLAN | PS905192T/S7 | GREATER WESTERN WATER CORPORATION |
| E-19 | DRAINAGE SEWERAGE | SEE PLAN SEE PLAN | PS905192T/S7 PS905192T/S7 | WYNDHAM CITY COUNCIL GREATER WESTERN WATER CORPORATION |
| E-20 | DRAINAGE | SEE PLAN | PS905192T/S4 | WYNDHAM CITY COUNCIL |
| E-21 | DRAINAGE SEWERAGE | SEE PLAN SEE PLAN | THIS PLAN THIS PLAN | WYNDHAM CITY COUNCIL GREATER WESTERN WATER CORPORATION |
| E-31 | WATER SUPPLY (THROUGH UNDERGROUND PIPES) | SEE PLAN | PS905192T/S7 | GREATER WESTERN WATER CORPORATION |
| E-32 | WATER SUPPLY (THROUGH UNDERGROUND PIPES) | SEE PLAN | PS905192T/S7 | GREATER WESTERN WATER CORPORATION |
| | SEWERAGE | SEE PLAN | PS905192T/S7 | GREATER WESTERN WATER CORPORATION |
| | DISTRIBUTION AND/OR TRANSMISSION OF GAS | SEE PLAN | PS905192T/S7 (SECTION 146 GAS INDUSTRY ACT 2001) | AUSNET GAS SERVICES PTY LTD |
| E-33 | WATER SUPPLY (THROUGH UNDERGROUND PIPES) | SEE PLAN | THIS PLAN | GREATER WESTERN WATER CORPORATION |



an company

© SMEC AUSTRALIA PTY LTD (ABN 47 065 475 149)
TOWER 4, LEVEL 20, 727 COLLINS STREET
DOCKLANDS VIC 3008 REF 2070s-18

ORIGINAL SHEET
SIZE: A3

SHEET 2

ADRIAN THOMAS

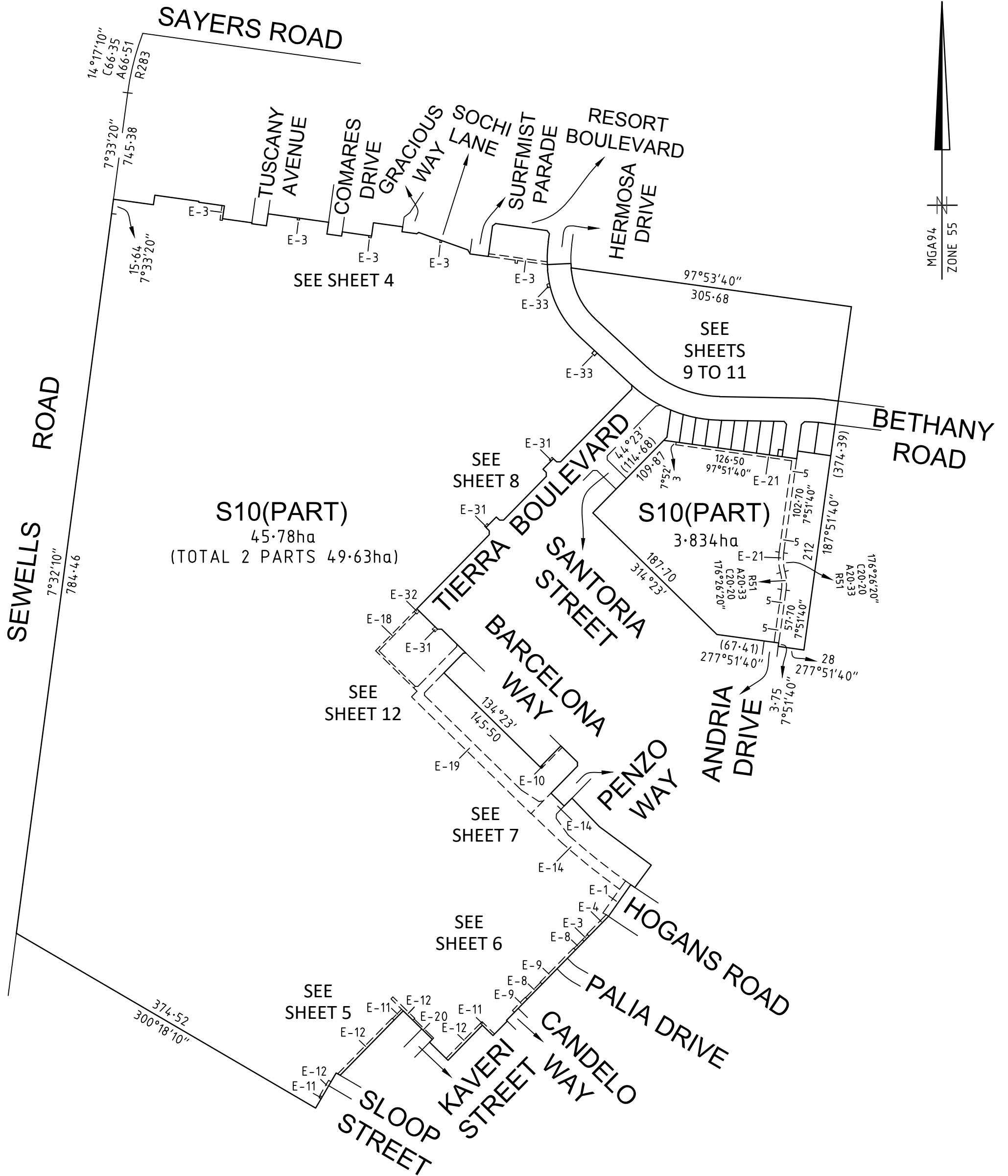
VERSION E

PLAN OF SUBDIVISION

Under Section 37 of the Subdivision Act 1988

PLAN NUMBER

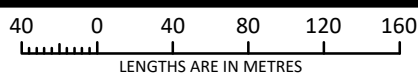
PS905192T/S8



an company

© SMEC AUSTRALIA PTY LTD (ABN 47 065 475 149)
TOWER 4, LEVEL 20, 727 COLLINS STREET
DOCKLANDS VIC 3008 REF 2070s-18

SCALE
1:4000



ORIGINAL SHEET
SIZE: A3

SHEET 3

ADRIAN THOMAS

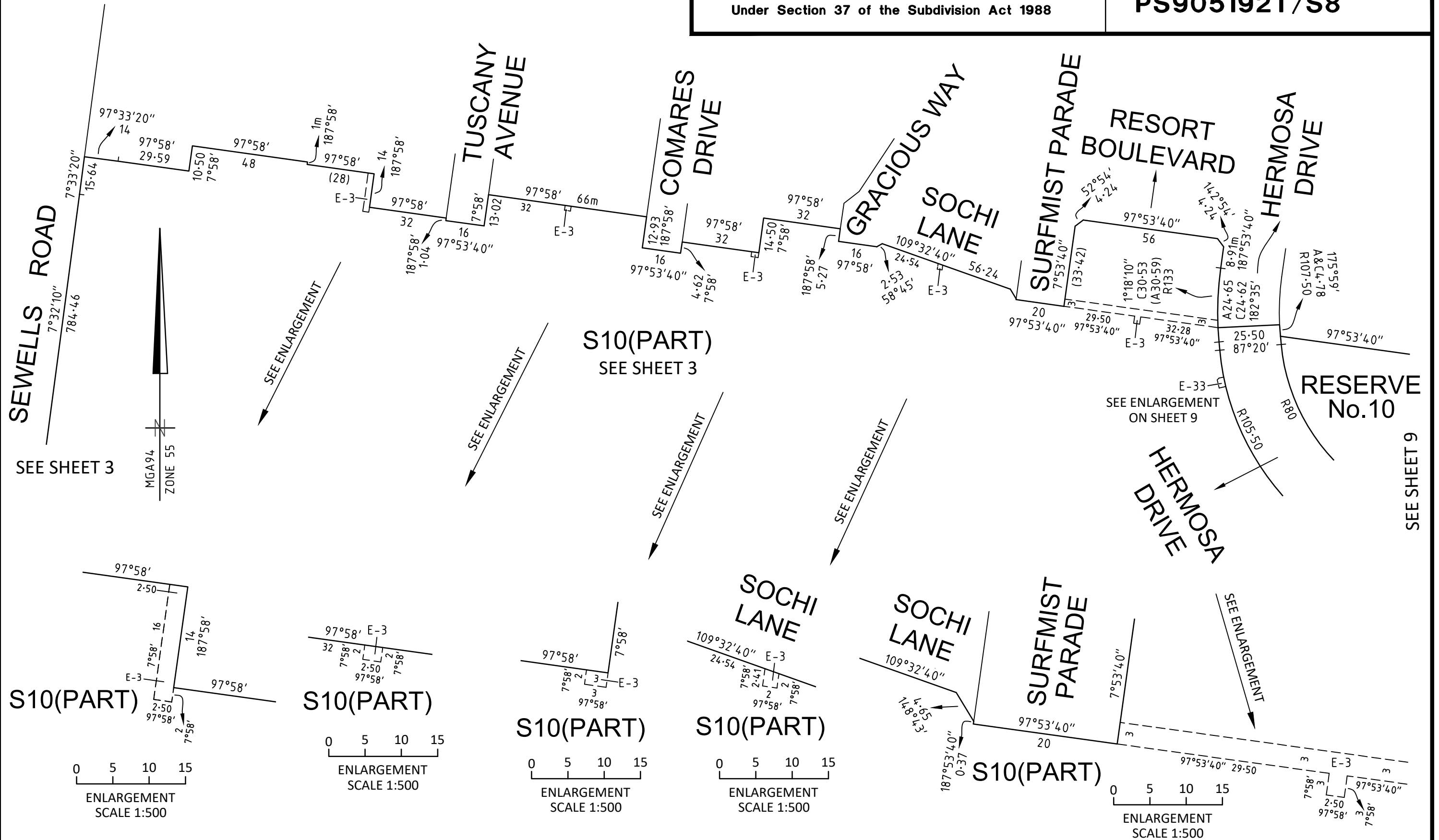
VERSION E

PLAN OF SUBDIVISION

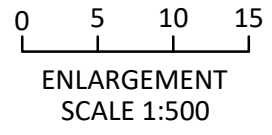
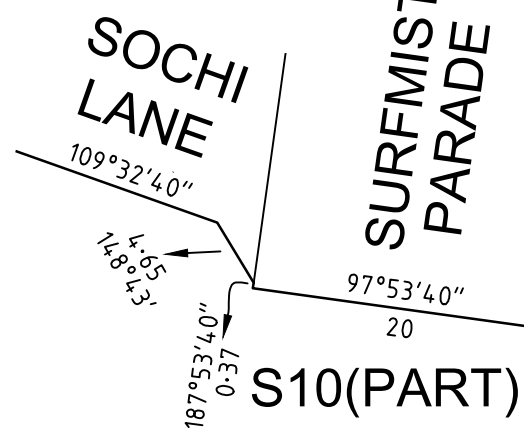
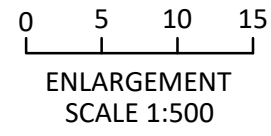
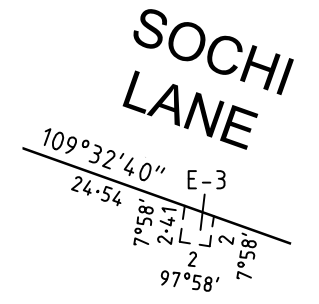
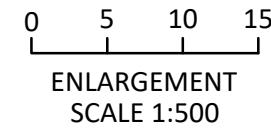
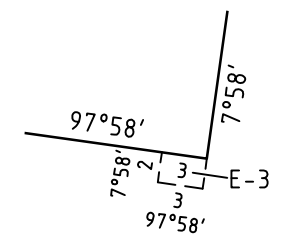
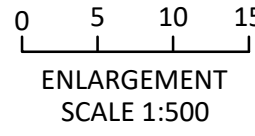
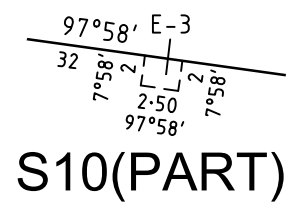
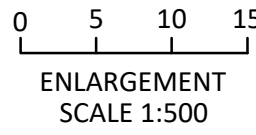
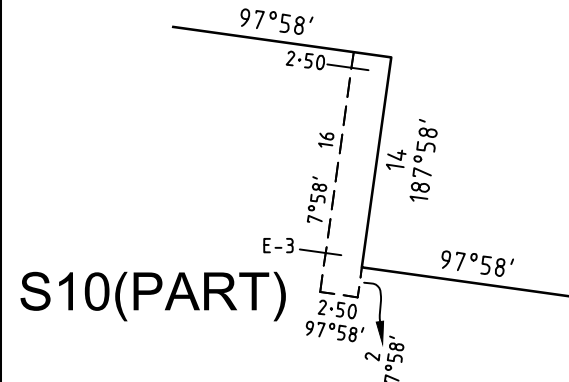
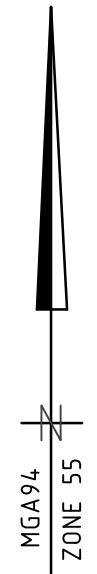
Under Section 37 of the Subdivision Act 1988

PLAN NUMBER

PS905192T/S8



SEE SHEET 3



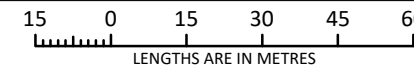
SEE SHEET 9



an company

© SMEC AUSTRALIA PTY LTD (ABN 47 065 475 149)
TOWER 4, LEVEL 20, 727 COLLINS STREET
DOCKLANDS VIC 3008 REF 2070s-18

SCALE
1:1500



ORIGINAL SHEET
SIZE A3

SHEET 4

ADRIAN THOMAS

VERSION E

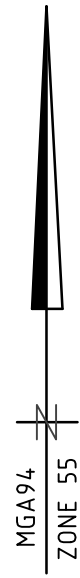
PLAN OF SUBDIVISION

Under Section 37 of the Subdivision Act 1988

PLAN NUMBER

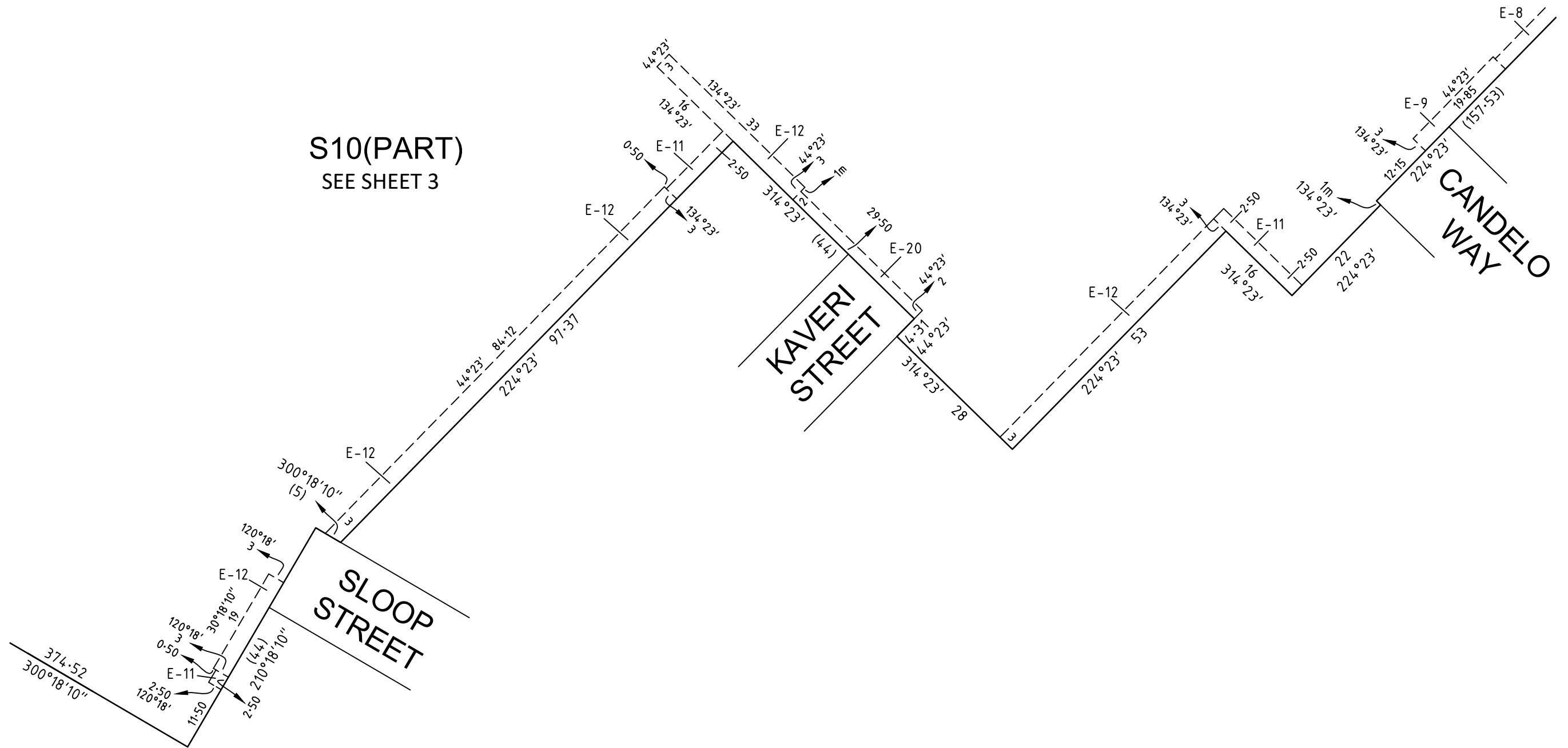
PS905192T/S8

SEE SHEET 6



S10(PART)
SEE SHEET 3

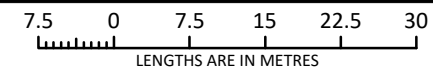
SEE SHEET 3



an company

© SMEC AUSTRALIA PTY LTD (ABN 47 065 475 149)
TOWER 4, LEVEL 20, 727 COLLINS STREET
DOCKLANDS VIC 3008 REF 2070s-18

SCALE
1:750



ORIGINAL SHEET
SIZE A3

SHEET 5

ADRIAN THOMAS

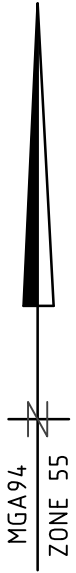
VERSION E

PLAN OF SUBDIVISION

Under Section 37 of the Subdivision Act 1988

PLAN NUMBER

PS905192T/S8



SEE SHEET 7

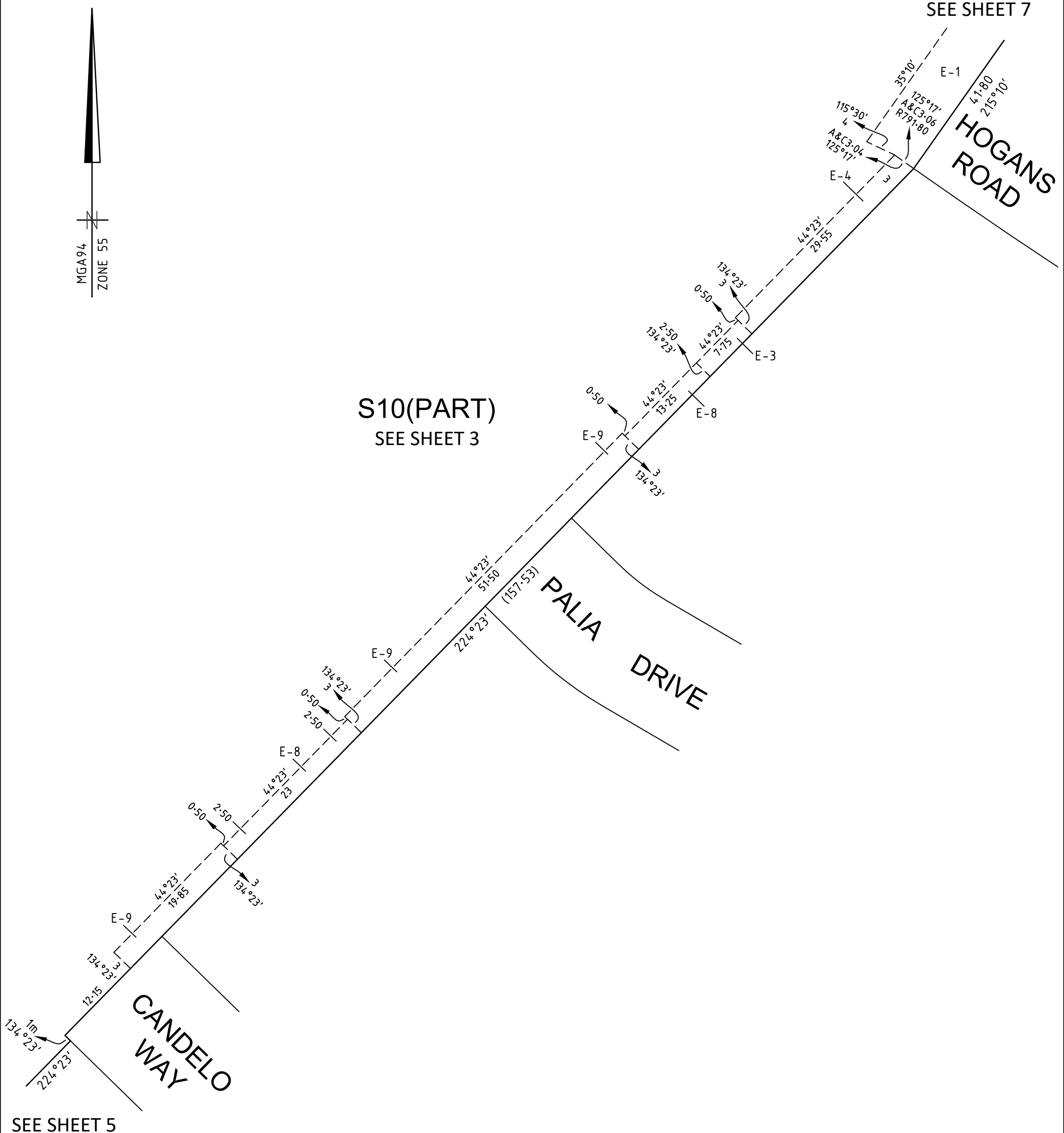
HOGANS ROAD

S10(PART)
SEE SHEET 3

PALIA DRIVE

CANDELO WAY

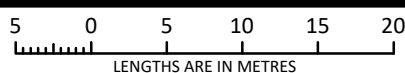
SEE SHEET 5



an company

© SMEC AUSTRALIA PTY LTD (ABN 47 065 475 149)
TOWER 4, LEVEL 20, 727 COLLINS STREET
DOCKLANDS VIC 3008 REF 2070s-18

SCALE
1:500



ORIGINAL SHEET
SIZE: A3

SHEET 6

ADRIAN THOMAS

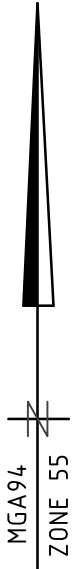
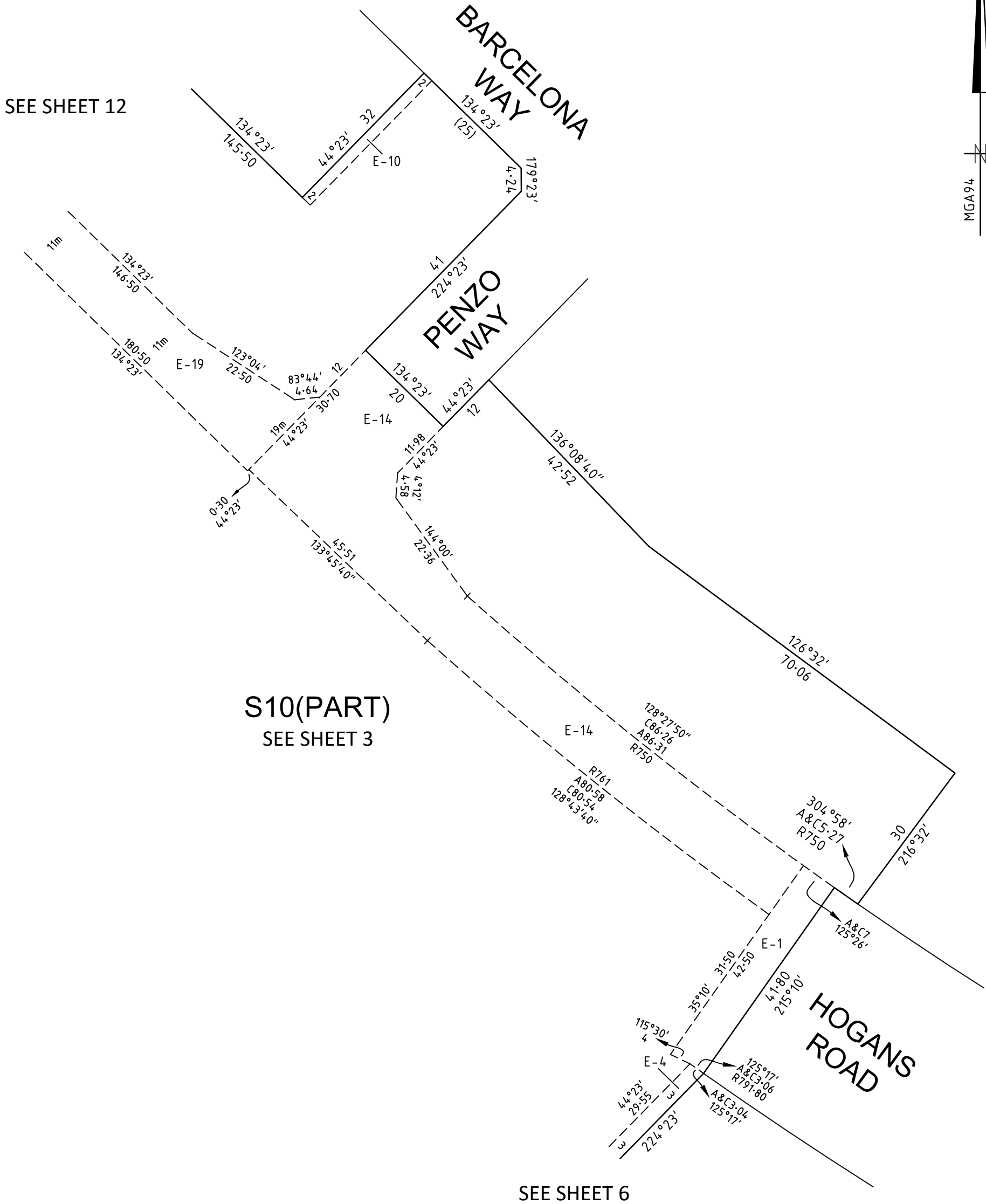
VERSION E

PLAN OF SUBDIVISION

Under Section 37 of the Subdivision Act 1988

PLAN NUMBER

PS905192T/S8

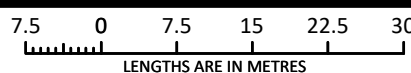


an company

© SMEC AUSTRALIA PTY LTD (ABN 47 065 475 149)
TOWER 4, LEVEL 20, 727 COLLINS STREET
DOCKLANDS VIC 3008

REF 2070s-18

SCALE
1:750



ORIGINAL SHEET
SIZE: A3

SHEET 7

ADRIAN THOMAS

VERSION E

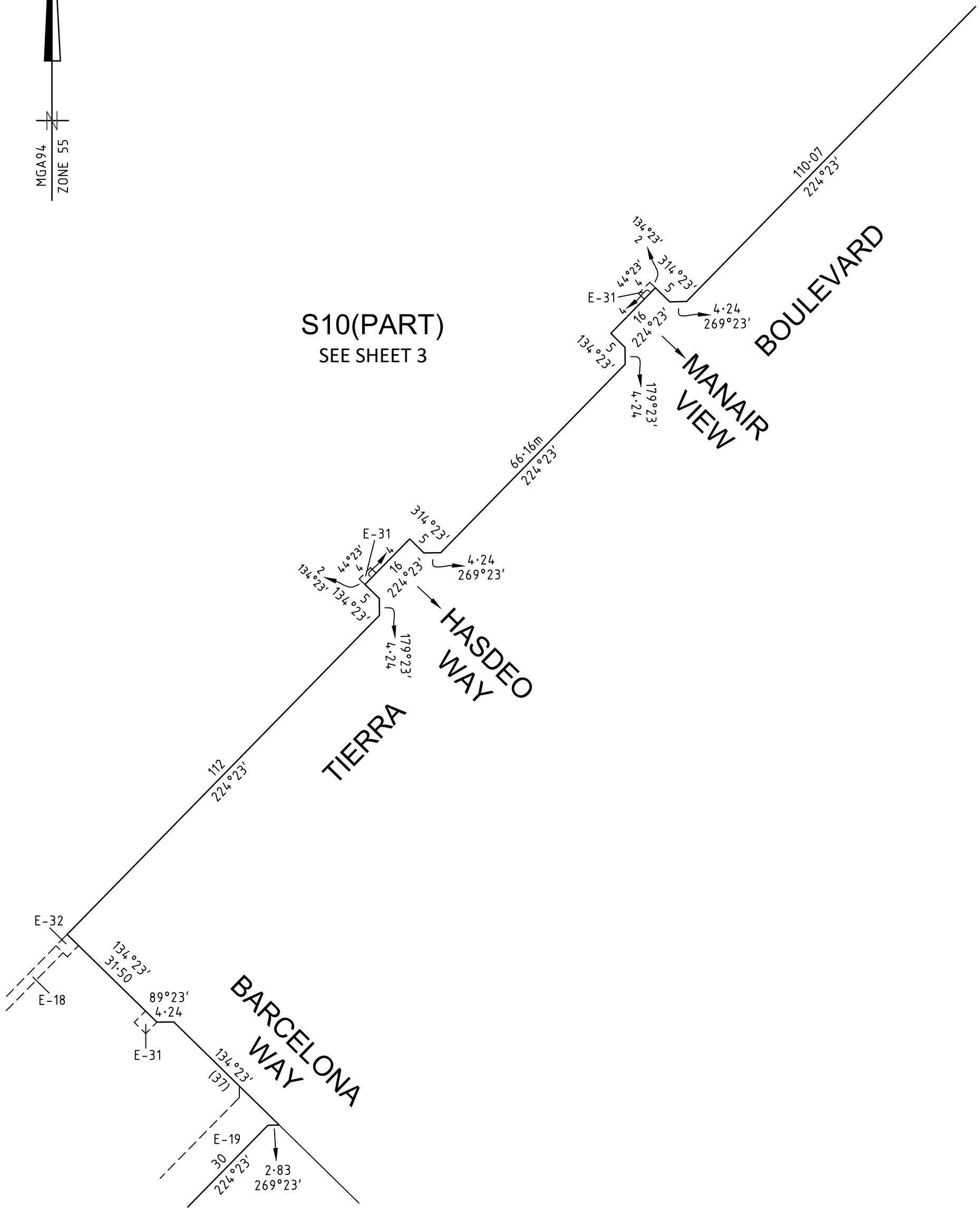
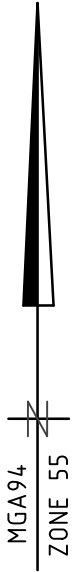
PLAN OF SUBDIVISION

Under Section 37 of the Subdivision Act 1988

PLAN NUMBER

PS905192T/S8

SEE SHEET 9



SEE SHEET 12

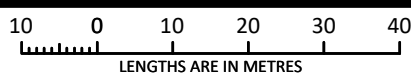


an  company

© SMEC AUSTRALIA PTY LTD (ABN 47 065 475 149)
TOWER 4, LEVEL 20, 727 COLLINS STREET
DOCKLANDS VIC 3008

REF 2070s-18

SCALE
1:1000



ORIGINAL SHEET
SIZE: A3

SHEET 8

ADRIAN THOMAS

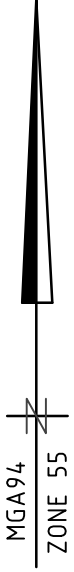
VERSION E

PLAN OF SUBDIVISION

Under Section 37 of the Subdivision Act 1988

PLAN NUMBER

PS905192T/S8

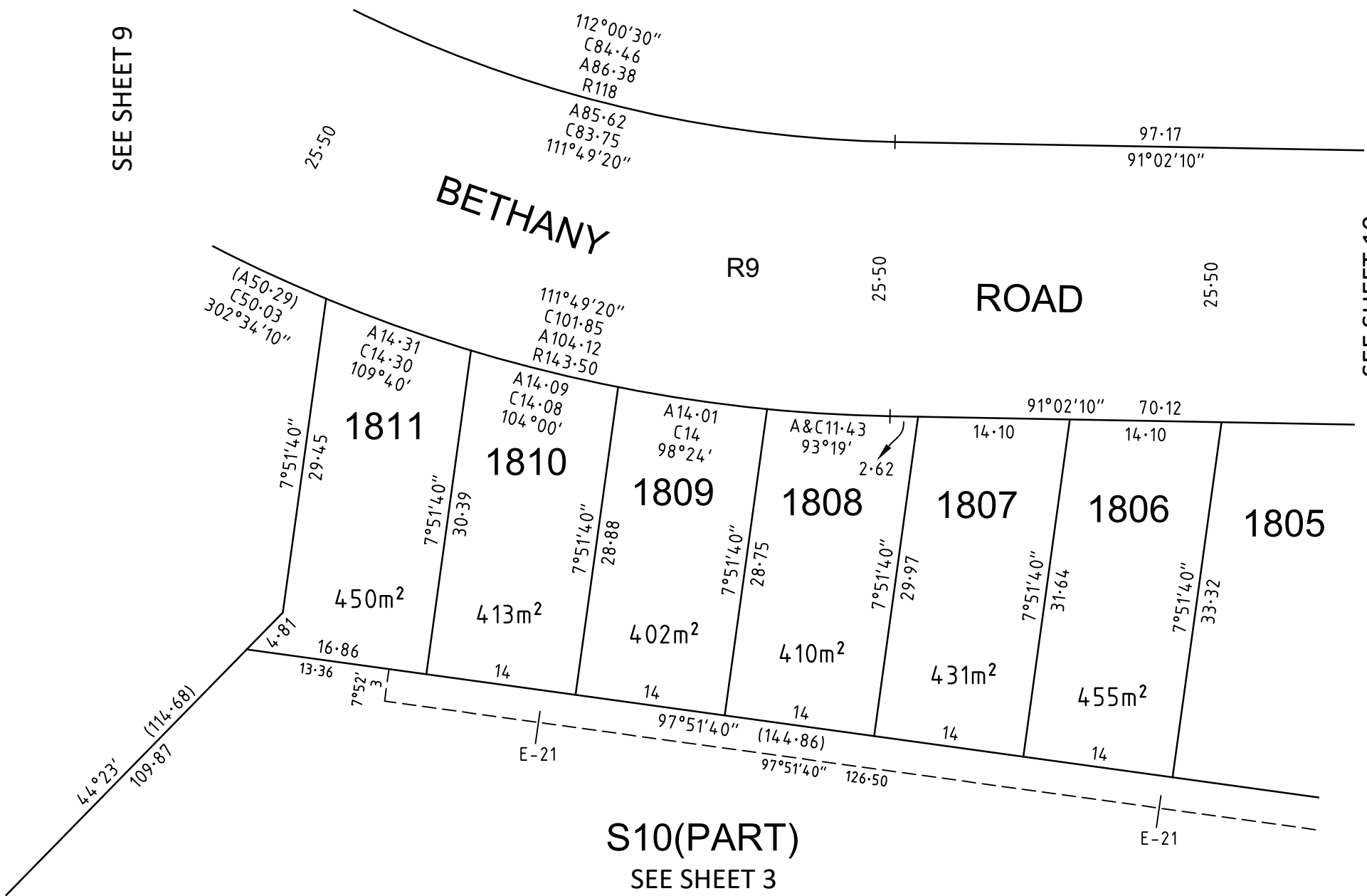


RESERVE No.10

SEE SHEET 9

SEE SHEET 9

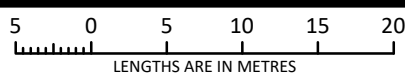
SEE SHEET 10



an company

© SMEC AUSTRALIA PTY LTD (ABN 47 065 475 149)
TOWER 4, LEVEL 20, 727 COLLINS STREET
DOCKLANDS VIC 3008 REF 2070s-18

SCALE
1:500



ORIGINAL SHEET
SIZE: A3

SHEET 11

ADRIAN THOMAS

VERSION E

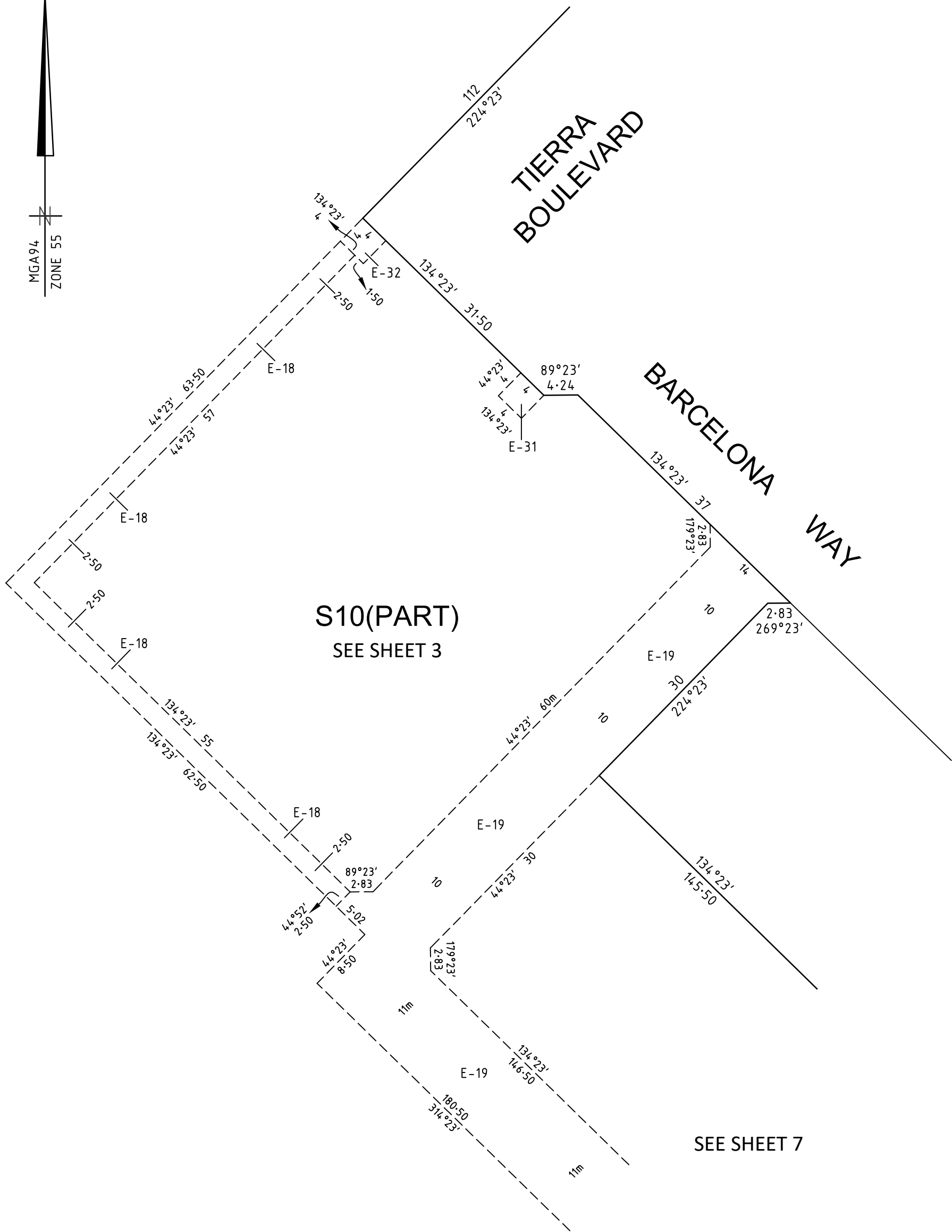
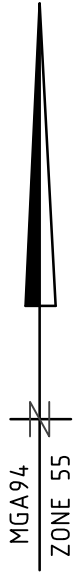
PLAN OF SUBDIVISION

Under Section 37 of the Subdivision Act 1988

PLAN NUMBER

PS905192T/S8

SEE SHEET 8



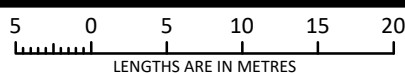
SEE SHEET 7



an company

© SMEC AUSTRALIA PTY LTD (ABN 47 065 475 149)
TOWER 4, LEVEL 20, 727 COLLINS STREET
DOCKLANDS VIC 3008 REF 2070s-18

SCALE
1:500



ORIGINAL SHEET
SIZE: A3

SHEET 12

ADRIAN THOMAS

VERSION E

PLAN OF SUBDIVISION
Under Section 37 of the Subdivision Act 1988

PLAN NUMBER
PS905192T/S8

Upon registration of this plan the following restrictions are created:

The registered proprietors of the burdened land covenant with the registered proprietors of the benefited land as set out in the restriction with the intent that the burden of the restriction runs with and binds the burdened land and the benefit of the restriction is annexed to and runs with the benefited land.

CREATION OF RESTRICTION A

Table of Land Burdened and Land Benefited:

| BURDENED LOT No. | BENEFITING LOTS |
|------------------|-----------------|
| 1801 | 1802 |
| 1802 | 1801 |
| 1803 | 1804 |
| 1804 | 1803, 1805 |
| 1805 | 1804, 1806 |
| 1806 | 1805, 1807 |
| 1807 | 1806, 1808 |
| 1808 | 1807, 1809 |
| 1809 | 1808, 1810 |
| 1810 | 1809, 1811 |
| 1811 | 1810 |

DESCRIPTION OF RESTRICTION

The registered proprietor or proprietors for the time being of any burdened lot on the Plan of Subdivision must not without the consent of the Responsible Authority build or allow to be built on the lot:

Memorandum of Common Provisions (MCP)

1. Any building other than a building which has been constructed and sited in accordance with the Memorandum of Common Provisions registered in Dealing No. AA010484 and which Memorandum of Common Provisions is incorporated in this plan.

The restriction shall cease to burden any lot on the Plan of Subdivision with affect from 31st December 2035.



an company

© SMEC AUSTRALIA PTY LTD (ABN 47 065 475 149)
TOWER 4, LEVEL 20, 727 COLLINS STREET
DOCKLANDS VIC 3008 REF 2070s-18

ORIGINAL SHEET
SIZE: A3

SHEET 13

ADRIAN THOMAS

VERSION E