

| | | | | | | |
|---|---|---|---|--|---------------|--|
| <div>PLAN OF SUBDIVISION</div> <div>Under Section 37 of the Subdivision Act 1988</div> | | | <div>LUV USE ONLY</div> <div>EDITION</div> | <div>PLAN NUMBER</div> <div>PS905192T/S5</div> | | |
| <div>LOCATION OF LAND</div> <div>PARISH: TARNEIT</div> <div>TOWNSHIP: -</div> <div>SECTION: 8</div> <div>CROWN ALLOTMENT: A1 (PART)</div> <div>CROWN PORTION: -</div> <div>TITLE REFERENCES: Vol. 12574 Fol. 263</div> <div>LAST PLAN REFERENCE/S: PS905192T/S4 (LOT S5)</div> <div>POSTAL ADDRESS: 1071 SAYERS ROAD</div> <div>(At time of subdivision) TARNEIT, 3029</div> <div>MGA94 Co-ordinates E 292 260</div> <div>(of approx centre of N 5 807 650</div> <div>land in plan) ZONE 55</div> | | | <div>Council Name: Wyndham City Council</div> <div>Council Reference Number: WYS4172/23</div> <div>Planning Permit Reference: WYP10817/18</div> <div>SPEAR Reference Number: S223299J</div> <div>Certification</div> <div>This plan is certified under section 11 (7) of the Subdivision Act 1988</div> <div>Date of original certification under section 6 of the Subdivision Act 1988: 25/02/2025</div> <div>Public Open Space</div> <div>A requirement for public open space under section 18 or 18A of the Subdivision Act 1988 has been made and the requirement has not been satisfied at Certification</div> <div>Digitally signed by: Maria Pereira for Wyndham City Council on 29/04/2025</div> | | | |
| VESTING OF ROADS AND/OR RESERVES | | | NOTATIONS | | | |
| IDENTIFIER | COUNCIL/BODY/PERSON | | <div>LOTS ON THIS PLAN MAY BE AFFECTED BY ONE OR MORE OWNERS CORPORATIONS (SEE OWNERS CORPORATION SEARCH REPORT FOR DETAILS).</div> <div>LOTS 1 TO 1500, 1526 TO 1535, 1540 TO 1543, 1554 TO 1564, 1572 AND 1573 (ALL INCLUSIVE) HAVE BEEN OMITTED FROM THIS PLAN.</div> <div>LOTS ON THIS PLAN MAY BE AFFECTED BY ONE OR MORE RESTRICTIONS. SEE SHEET 14 FOR FURTHER DETAILS.</div> <div>LOT S6 IS IN 2 PARTS.</div> <div>EASEMENTS E-2, E-5, E-6, E-7, E-15 TO E-19 (BOTH INCLUSIVE), E-21, E-22, E-24 TO E-27 (BOTH INCLUSIVE) AND E-29 TO E-36 (BOTH INCLUSIVE) HAVE BEEN OMITTED FROM THIS PLAN.</div> <div>OTHER PURPOSE OF THE PLAN: REMOVAL OF DRAINAGE EASEMENT E-2 ON PS905192T/S4 AS AFFECTS RIMO LANE, BARCELONA WAY AND LOT 1517 ON THIS PLAN.</div> <div>GROUND'S FOR REMOVAL: BY AGREEMENT OF ALL INTERESTED PARTIES UPON REGISTRATION OF THIS PLAN PURSUANT TO SECTION 6(1)(k)(iv) OF THE SUBDIVISION ACT 1988.</div> | | | |
| ROAD R6 | WYNDHAM CITY COUNCIL | | | | | |
| RESERVE No.5 | POWERCOR AUSTRALIA LTD | | | | | |
| RESERVE No.6 | WYNDHAM CITY COUNCIL | | | | | |
| RESERVE No.7 | WYNDHAM CITY COUNCIL | | | | | |
| NOTATIONS | | | | | | |
| <div>DEPTH LIMITATION: 15.24m BELOW THE SURFACE.</div> <div>STAGING: THIS IS A STAGED SUBDIVISION.</div> <div>PLANNING PERMIT No. WYP10817</div> <div>SURVEY: THIS PLAN IS BASED ON SURVEY.</div> <div>THIS SURVEY HAS BEEN CONNECTED TO PERMANENT MARKS No(s): PM17 (WERRIBEE) AND PM18, PM134, PM217 & PM760 (TARNEIT)</div> <div>PROCLAIMED SURVEY AREA:</div> <div>ALAMORA 15</div> <div>3.418ha</div> <div>54 LOTS</div> | | | | | | |
| EASEMENT INFORMATION | | | | | | |
| LEGEND A-Appurtenant Easement E-Encumbering Easement R-Encumbering Easement (Road) | | | | | | |
| IMPLIED EASEMENTS UNDER SECTION 12(2) OF THE SUBDIVISION ACT 1988 APPLY TO ALL LOTS ON THIS PLAN AND AS SET ASIDE ON LOT A ON PS841640V. | | | | | | |
| Easement Reference | Purpose | Width (Metres) | Origin | Land Benefited/In Favour Of | | |
| E-1 | DRAINAGE SEWERAGE WATER SUPPLY (THROUGH UNDERGROUND PIPES) | SEE PLAN SEE PLAN SEE PLAN | PS905192T PS905192T PS905192T | WYNDHAM CITY COUNCIL GREATER WESTERN WATER CORPORATION GREATER WESTERN WATER CORPORATION | | |
| E-3 | SEWERAGE | SEE PLAN | PS905192T | GREATER WESTERN WATER CORPORATION | | |
| E-4 | DRAINAGE | SEE PLAN | PS905192T | WYNDHAM CITY COUNCIL | | |
| | SEWERAGE | SEE PLAN | PS905192T | GREATER WESTERN WATER CORPORATION | | |
| E-8 | SEWERAGE | SEE PLAN | PS905192T/S3 | GREATER WESTERN WATER CORPORATION | | |
| E-9 | DRAINAGE | SEE PLAN | PS905192T/S3 | WYNDHAM CITY COUNCIL | | |
| | SEWERAGE | SEE PLAN | PS905192T/S3 | GREATER WESTERN WATER CORPORATION | | |
| E-10 | DRAINAGE | SEE PLAN | THIS PLAN | WYNDHAM CITY COUNCIL | | |
| E-11 | SEWERAGE | SEE PLAN | PS905192T/S4 | GREATER WESTERN WATER CORPORATION | | |
| 2070S-15 VER J.DWG AA/AA | | | SEE SHEET 2 FOR CONTINUATION | | | |
| <div>smec</div> <div>an su company</div> <div>© SMEC AUSTRALIA PTY LTD (ABN 47 065 475 149)</div> <div>TOWER 4, LEVEL 20, 727 COLLINS STREET</div> <div>DOCKLANDS VIC 3008</div> | | SURVEYOR REF: 2070s-15 | | ORIGINAL SHEET SIZE: A3 | SHEET 1 OF 14 | |
| | | Digitally signed by: Adrian Thomas, Licensed Surveyor, Surveyor's Plan Version (J), 26/03/2025, SPEAR Ref: S223299J | | | | |

PLAN OF SUBDIVISION

Under Section 37 of the Subdivision Act 1988

PLAN NUMBER

PS905192T/S5

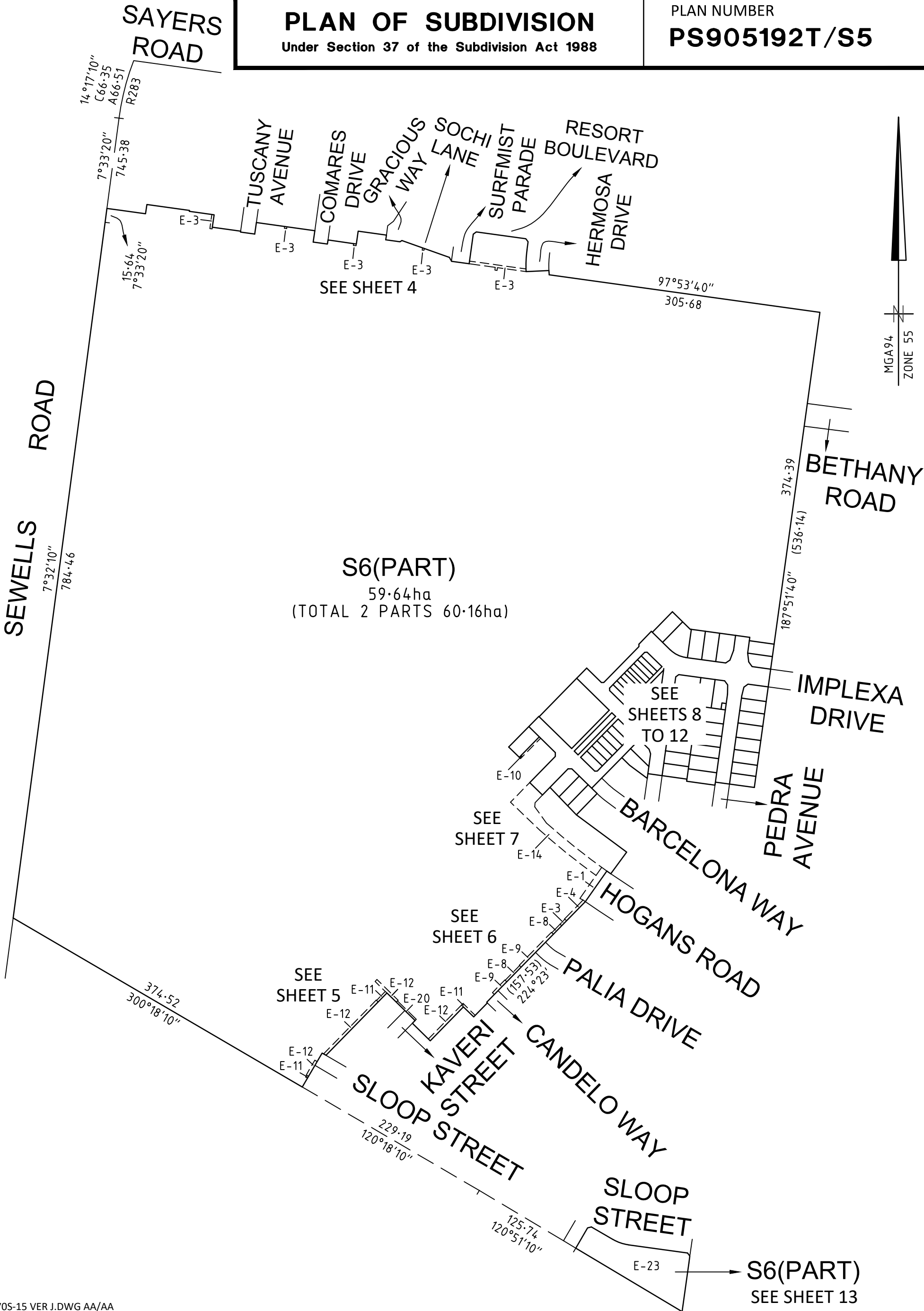
| Easement Reference | Purpose | Width (Metres) | Origin | Land Benefited/In Favour Of |
|--------------------|--|----------------|---|-----------------------------------|
| E-12 | DRAINAGE | SEE PLAN | PS905192T/S4 | WYNDHAM CITY COUNCIL |
| | SEWERAGE | SEE PLAN | PS905192T/S4 | GREATER WESTERN WATER CORPORATION |
| E-13 | SEWERAGE | SEE PLAN | THIS PLAN | GREATER WESTERN WATER CORPORATION |
| E-14 | DRAINAGE | SEE PLAN | THIS PLAN | WYNDHAM CITY COUNCIL |
| | SEWERAGE | SEE PLAN | THIS PLAN | GREATER WESTERN WATER CORPORATION |
| E-20 | DRAINAGE | SEE PLAN | PS905192T/S4 | WYNDHAM CITY COUNCIL |
| E-23 | CREATION AND MAINTENANCE OF WETLANDS, FLOODWAY AND DRAINAGE AS SPECIFIED AND SET-OUT IN MEMORANDUM OF COMMON PROVISIONS NO. AA2741 | SEE PLAN | PS905192T/S2 | MELBOURNE WATER CORPORATION |
| E-28 | POWERLINE | SEE PLAN | THIS PLAN (SECTION 88 OF THE ELECTRICITY INDUSTRY ACT 2000) | POWERCOR AUSTRALIA LTD |
| E-37 | DISTRIBUTION AND/OR TRANSMISSION OF GAS | SEE PLAN | THIS PLAN (SECTION 146 GAS INDUSTRY ACT 2001) | AUSTNET GAS SERVICES PTY LTD |
| | WATER SUPPLY (THROUGH UNDERGROUND PIPES) | SEE PLAN | THIS PLAN | GREATER WESTERN WATER CORPORATION |

2070S-15 VER J.DWG AA/AA

PLAN OF SUBDIVISION

Under Section 37 of the Subdivision Act 1988

PLAN NUMBER
PS905192T/S5



2070S-15 VER J.DWG AA/AA

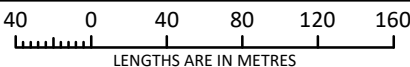


an company

© SMEC AUSTRALIA PTY LTD (ABN 47 065 475 149)
TOWER 4, LEVEL 20, 727 COLLINS STREET
DOCKLANDS VIC 3008

REF 2070s-15

SCALE
1:4000



Digitally signed by: Adrian Thomas, Licensed Surveyor,
Surveyor's Plan Version (J),
26/03/2025, SPEAR Ref: S223299J

ORIGINAL SHEET
SIZE: A3

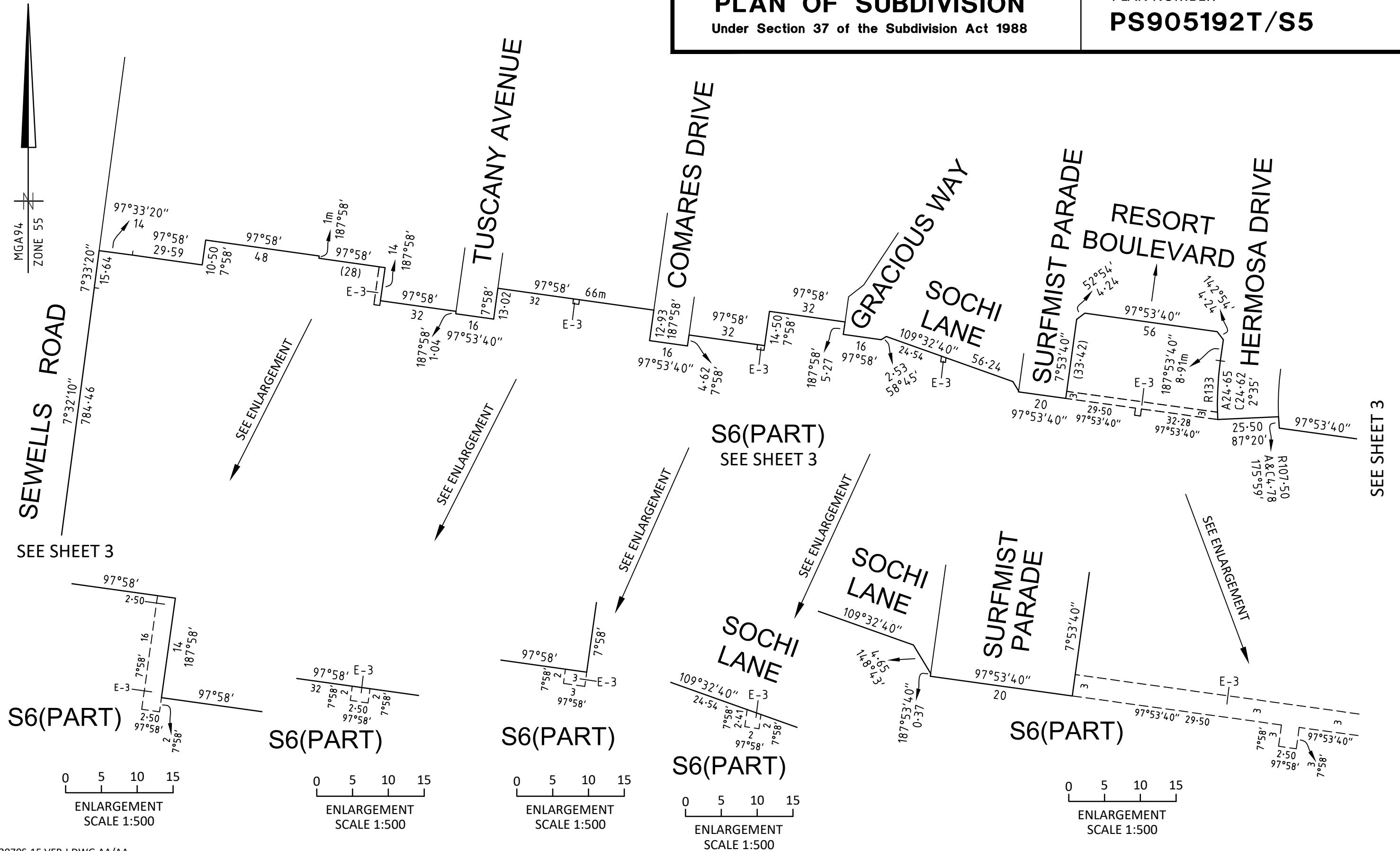
SHEET 3

Digitally signed by:
Wyndham City Council,
29/04/2025,
SPEAR Ref: S223299J

Under Section 37 of the Subdivision Act 1988

PLAN NUMBER

PS905192T/S5



2070S-15 VER J.DWG AA/AA



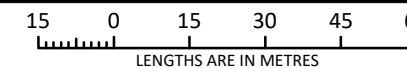
an **Sj** company

© SMEC AUSTRALIA PTY LTD (ABN 47 065 475 149)

TOWER 4, LEVEL 20, 727 COLLINS STREET
DOCKLANDS VIC 3008

REF 2070s-15

SCALE
1:1500



Digitally signed by: Adrian Thomas, Licensed Surveyor,
Surveyor's Plan Version (J),
26/03/2025, SPEAR Ref: S223299J

ORIGINAL SHEET
SIZE A3

SHEET 4

Digitally signed by:
Wyndham City Council,
29/04/2025,
SPEAR Ref: S223299J

PLAN OF SUBDIVISION

Under Section 37 of the Subdivision Act 1988

PLAN NUMBER

PS905192T/S5

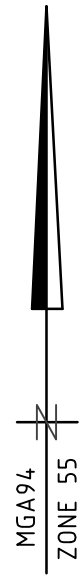
SEE SHEET 6

CANDELO
WAY

KAVERI
STREET

SLOOP STREET

S6(PART)
SEE SHEET 3



SEE SHEET 3

2070S-15 VER J.DWG AA/AA

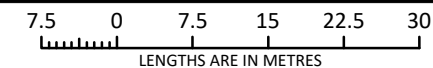


an company

© SMEC AUSTRALIA PTY LTD (ABN 47 065 475 149)
TOWER 4, LEVEL 20, 727 COLLINS STREET
DOCKLANDS VIC 3008

REF 2070s-15

SCALE
1:750



Digitally signed by: Adrian Thomas, Licensed Surveyor,
Surveyor's Plan Version (J),
26/03/2025, SPEAR Ref: S223299J

ORIGINAL SHEET
SIZE A3

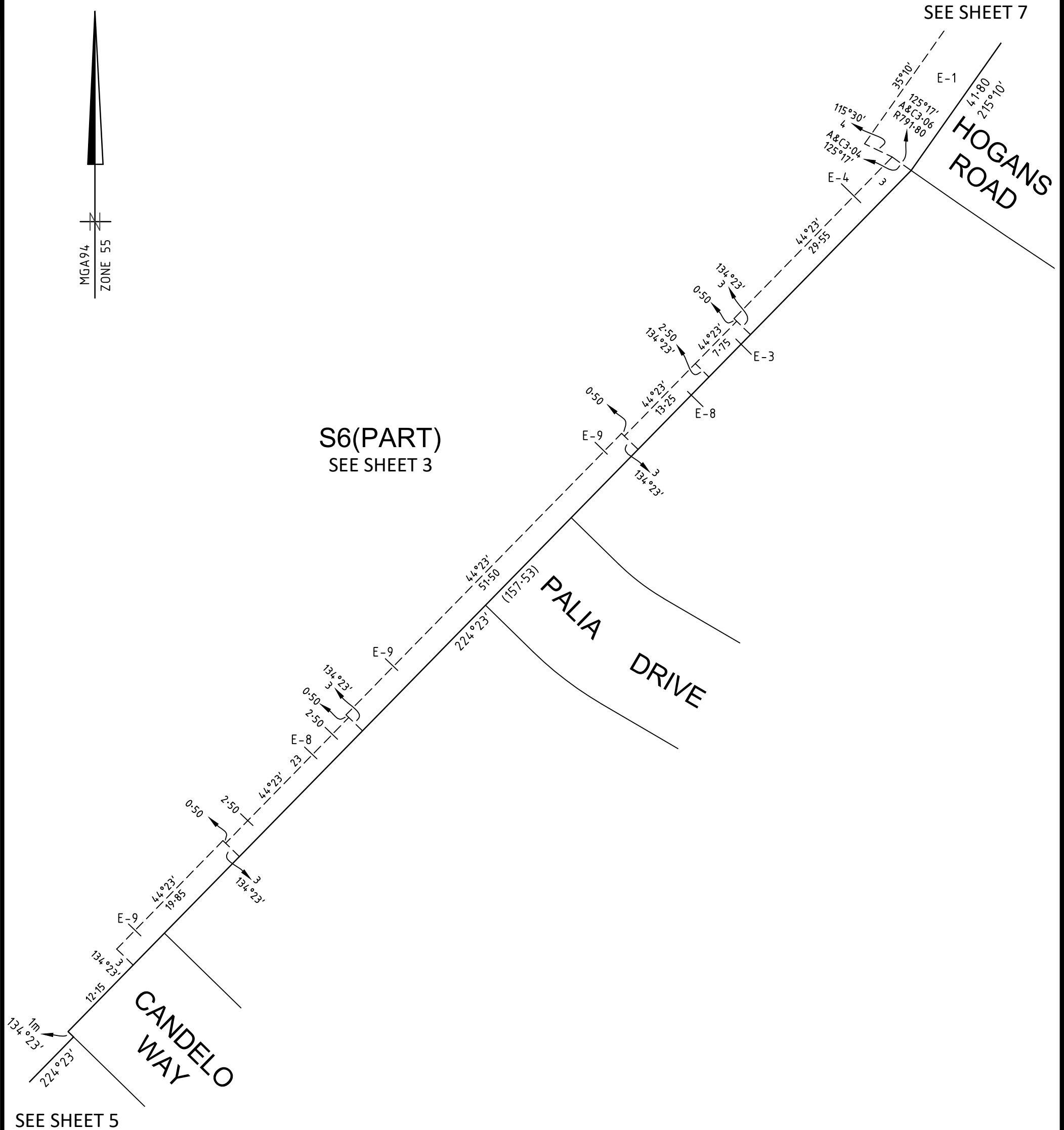
SHEET 5

Digitally signed by:
Wyndham City Council,
29/04/2025,
SPEAR Ref: S223299J

PLAN OF SUBDIVISION

Under Section 37 of the Subdivision Act 1988

PLAN NUMBER
PS905192T/S5



2070S-15 VER J.DWG AA/AA

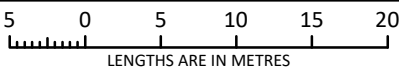


an company

© SMEC AUSTRALIA PTY LTD (ABN 47 065 475 149)
TOWER 4, LEVEL 20, 727 COLLINS STREET
DOCKLANDS VIC 3008

REF 2070s-15

SCALE
1:500



Digitally signed by: Adrian Thomas, Licensed Surveyor,
Surveyor's Plan Version (J),
26/03/2025, SPEAR Ref: S223299J

ORIGINAL SHEET
SIZE: A3

SHEET 6

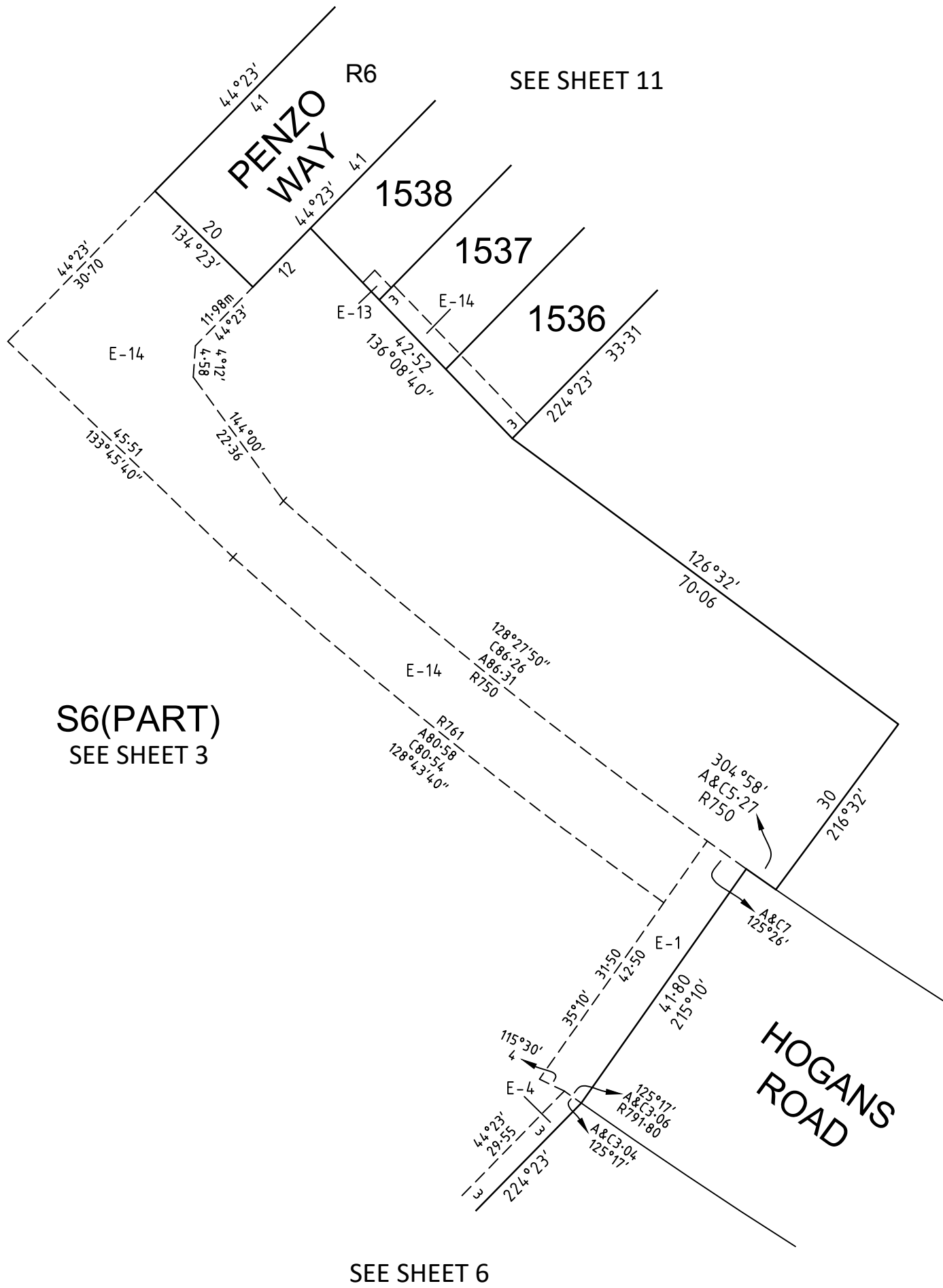
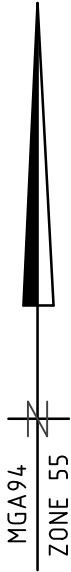
Digitally signed by:
Wyndham City Council,
29/04/2025,
SPEAR Ref: S223299J

PLAN OF SUBDIVISION

Under Section 37 of the Subdivision Act 1988

PLAN NUMBER

PS905192T/S5



S6(PART)
SEE SHEET 3

SEE SHEET 6

2070S-15 VER J.DWG AA/AA

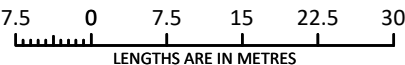


an company

© SMEC AUSTRALIA PTY LTD (ABN 47 065 475 149)
TOWER 4, LEVEL 20, 727 COLLINS STREET
DOCKLANDS VIC 3008

REF 2070s-15

SCALE
1:750



Digitally signed by: Adrian Thomas, Licensed Surveyor,
Surveyor's Plan Version (J),
26/03/2025, SPEAR Ref: S223299J

ORIGINAL SHEET
SIZE: A3

SHEET 7

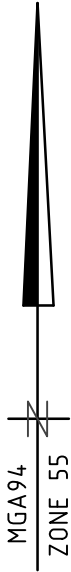
Digitally signed by:
Wyndham City Council,
29/04/2025,
SPEAR Ref: S223299J

PLAN OF SUBDIVISION

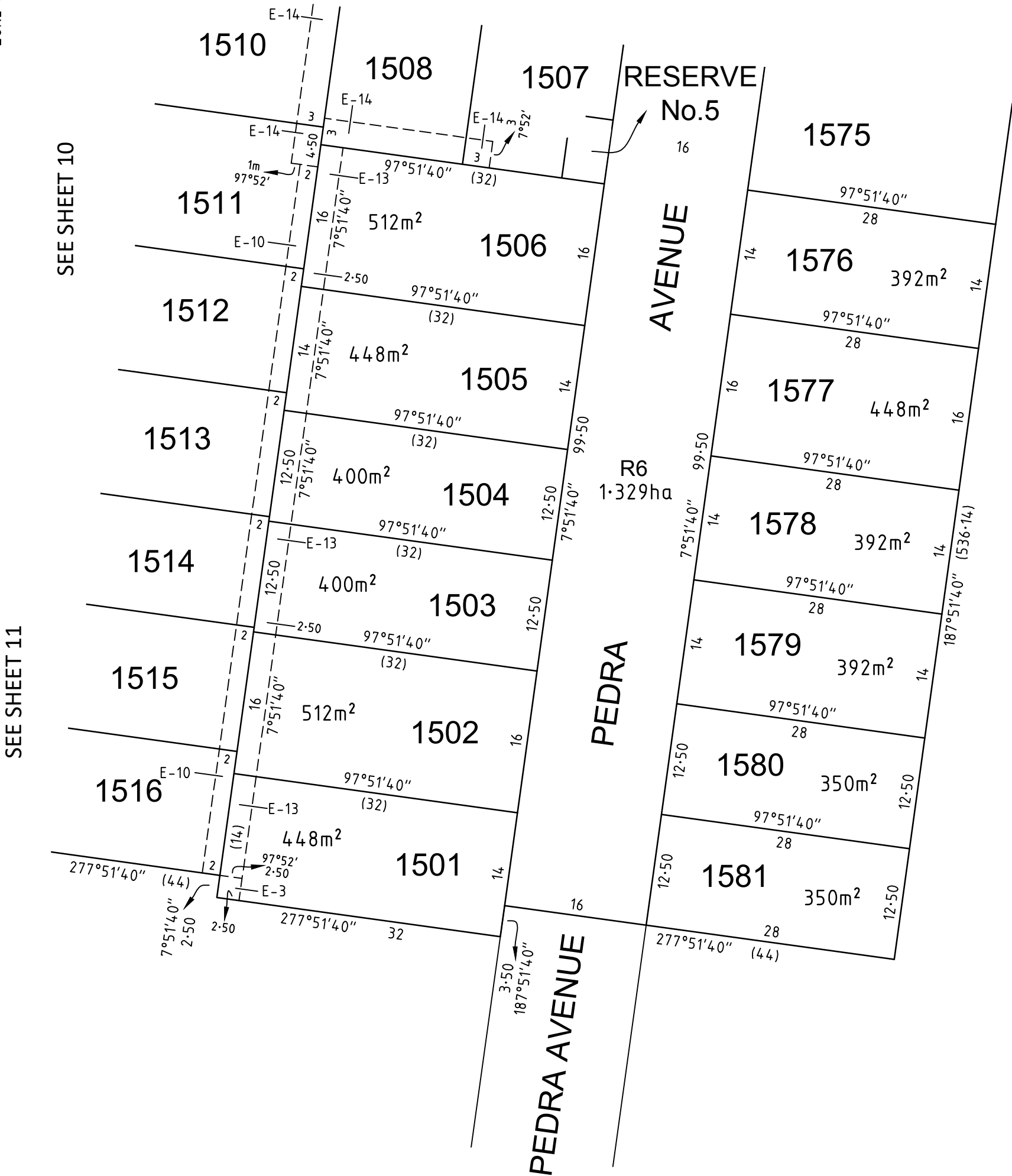
Under Section 37 of the Subdivision Act 1988

PLAN NUMBER

PS905192T/S5



SEE SHEET 9



2070S-15 VER J.DWG AA/AA

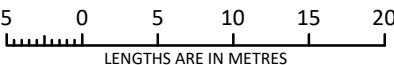


an company

© SMEC AUSTRALIA PTY LTD (ABN 47 065 475 149)
TOWER 4, LEVEL 20, 727 COLLINS STREET
DOCKLANDS VIC 3008

REF 2070s-15

SCALE
1:500



Digitally signed by: Adrian Thomas, Licensed Surveyor,
Surveyor's Plan Version (J),
26/03/2025, SPEAR Ref: S223299J

ORIGINAL SHEET
SIZE: A3

SHEET 8

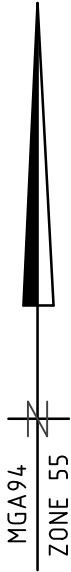
Digitally signed by:
Wyndham City Council,
29/04/2025,
SPEAR Ref: S223299J

PLAN OF SUBDIVISION

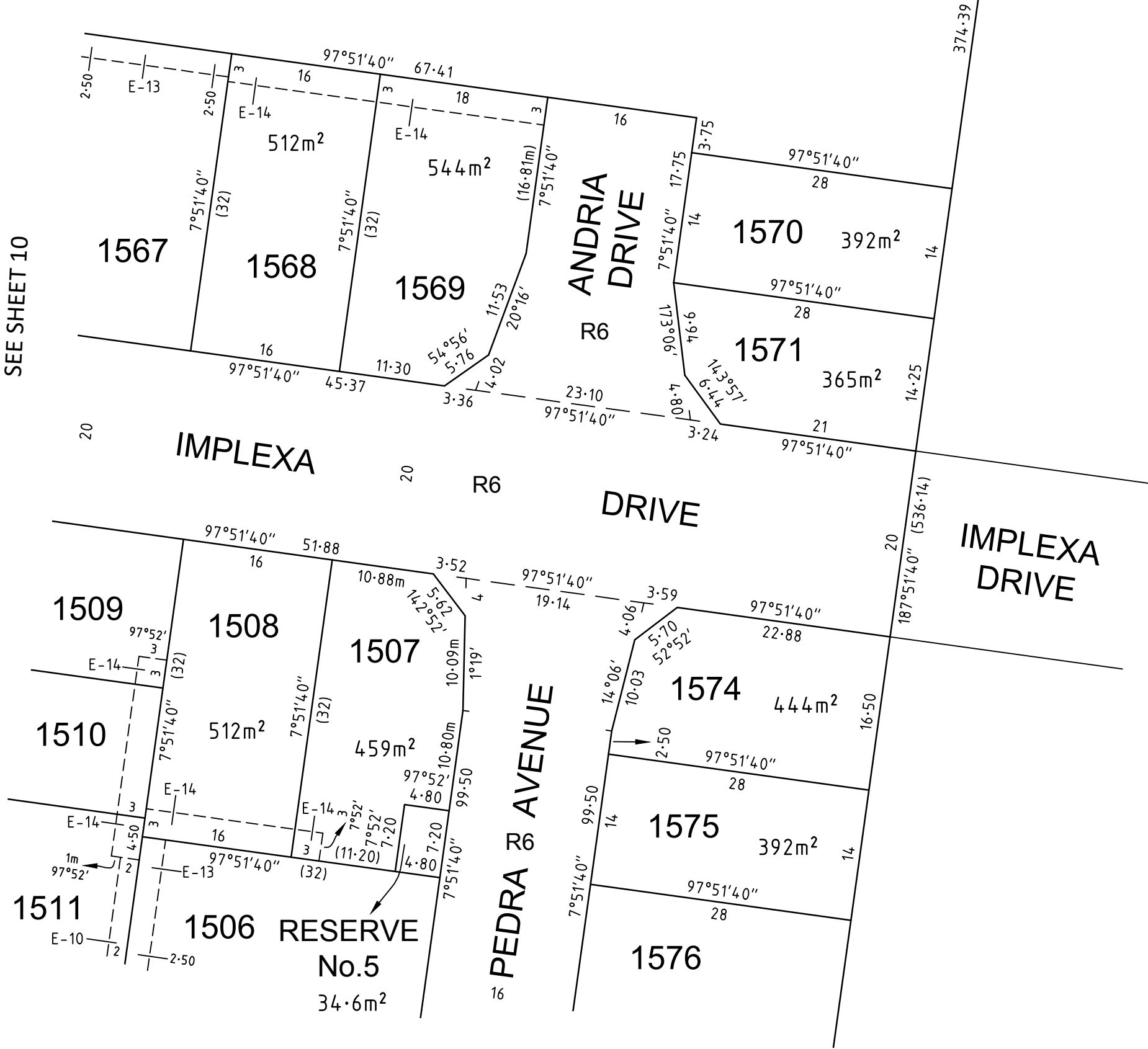
Under Section 37 of the Subdivision Act 1988

PLAN NUMBER

PS905192T/S5



S6(PART)
SEE SHEET 3



SEE SHEET 8

2070S-15 VER J.DWG AA/AA

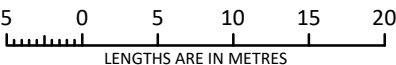


an company

© SMEC AUSTRALIA PTY LTD (ABN 47 065 475 149)
TOWER 4, LEVEL 20, 727 COLLINS STREET
DOCKLANDS VIC 3008

REF 2070s-15

SCALE
1:500



Digitally signed by: Adrian Thomas, Licensed Surveyor,
Surveyor's Plan Version (J),
26/03/2025, SPEAR Ref: S223299J

ORIGINAL SHEET
SIZE: A3

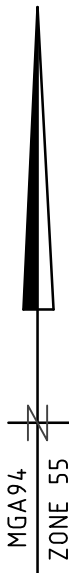
SHEET 9

Digitally signed by:
Wyndham City Council,
29/04/2025,
SPEAR Ref: S223299J

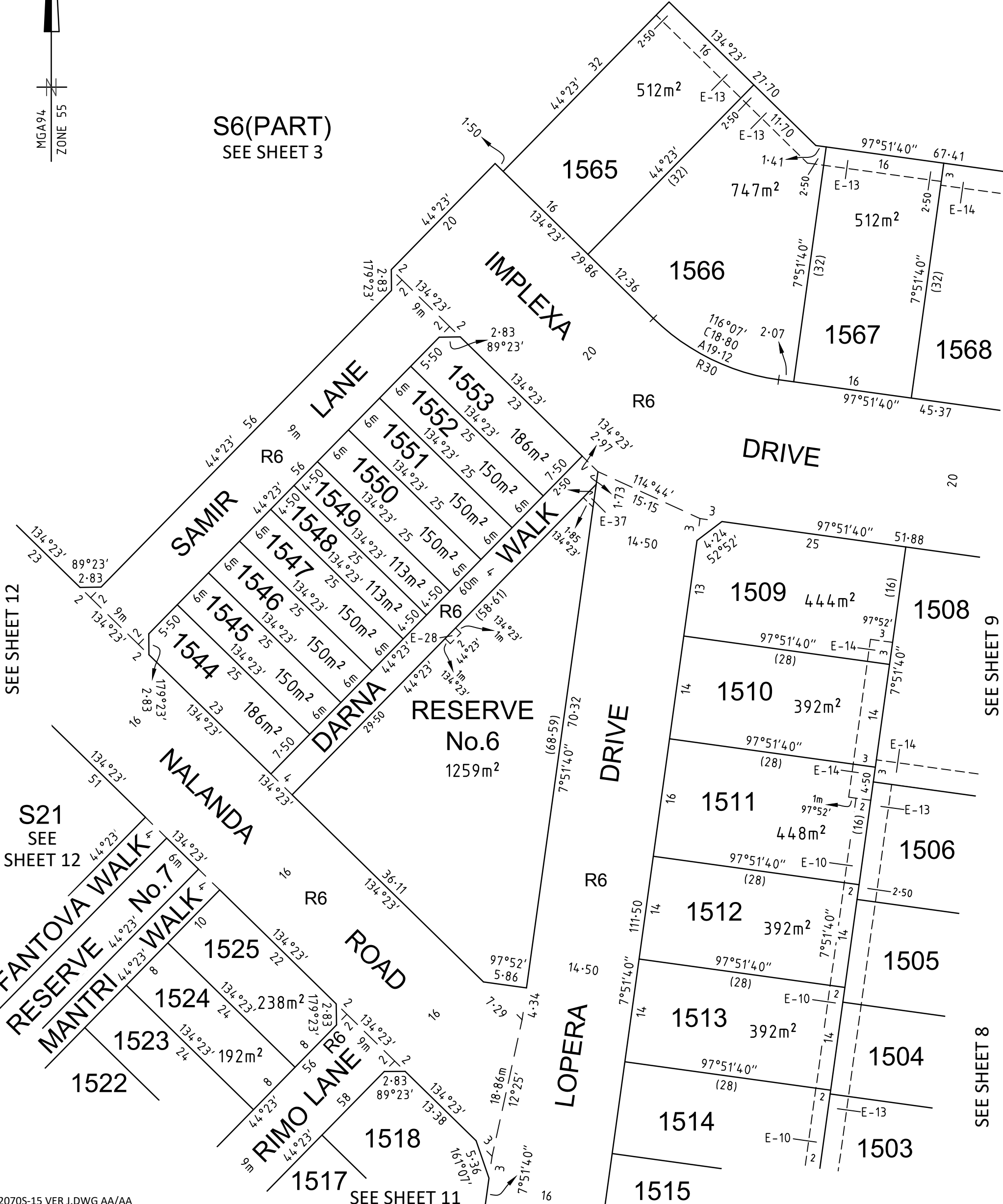
PLAN OF SUBDIVISION

Under Section 37 of the Subdivision Act 1988

PLAN NUMBER
PS905192T/S5



S6(PART)
SEE SHEET 3



SEE SHEET 12

S21
SEE
SHEET 12

SEE SHEET 9

SEE SHEET 8

2070S-15 VER J.DWG AA/AA

SEE SHEET 11

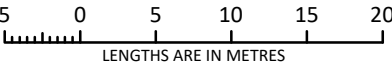


an company

© SMEC AUSTRALIA PTY LTD (ABN 47 065 475 149)
TOWER 4, LEVEL 20, 727 COLLINS STREET
DOCKLANDS VIC 3008

REF 2070s-15

SCALE
1:500



Digitally signed by: Adrian Thomas, Licensed Surveyor,
Surveyor's Plan Version (J),
26/03/2025, SPEAR Ref: S223299J

ORIGINAL SHEET
SIZE: A3

SHEET 10

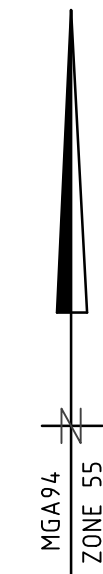
Digitally signed by:
Wyndham City Council,
29/04/2025,
SPEAR Ref: S223299J

PLAN OF SUBDIVISION

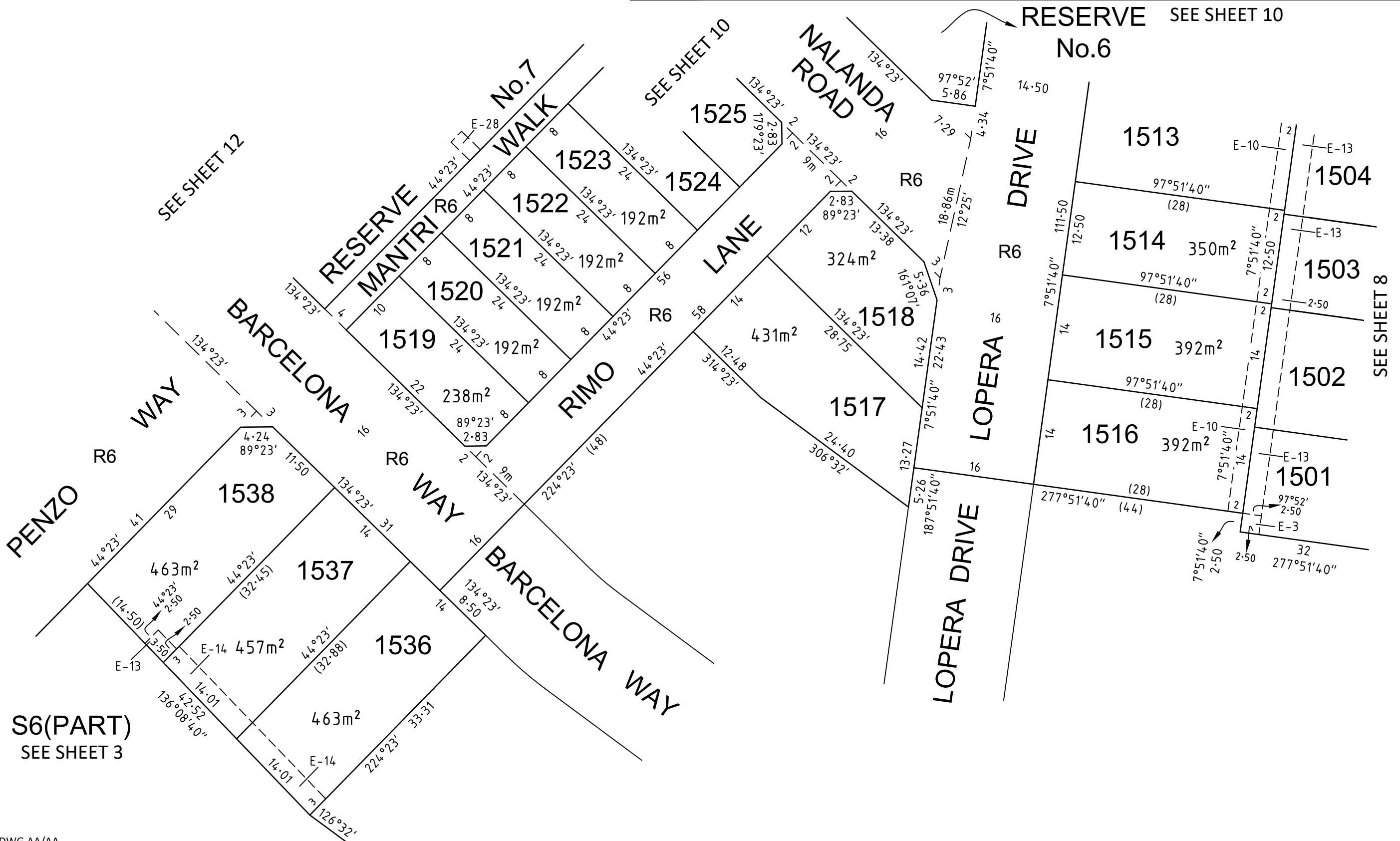
Under Section 37 of the Subdivision Act 1988

PLAN NUMBER

PS905192T/S5



SEE SHEET 7



2070S-15 VER J.DWG AA/AA



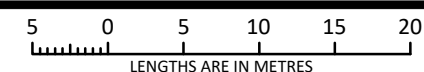
an company

© SMEC AUSTRALIA PTY LTD (ABN 47 065 475 149)

TOWER 4, LEVEL 20, 727 COLLINS STREET
DOCKLANDS VIC 3008

REF 2070s-15

SCALE
1:500



Digitally signed by: Adrian Thomas, Licensed Surveyor,
Surveyor's Plan Version (J),
26/03/2025, SPEAR Ref: S223299J

ORIGINAL SHEET
SIZE A3

SHEET 11

Digitally signed by:
Wyndham City Council,
29/04/2025,
SPEAR Ref: S223299J

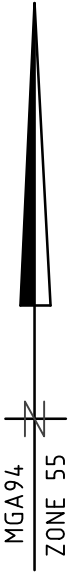
PLAN OF SUBDIVISION

Under Section 37 of the Subdivision Act 1988

PLAN NUMBER

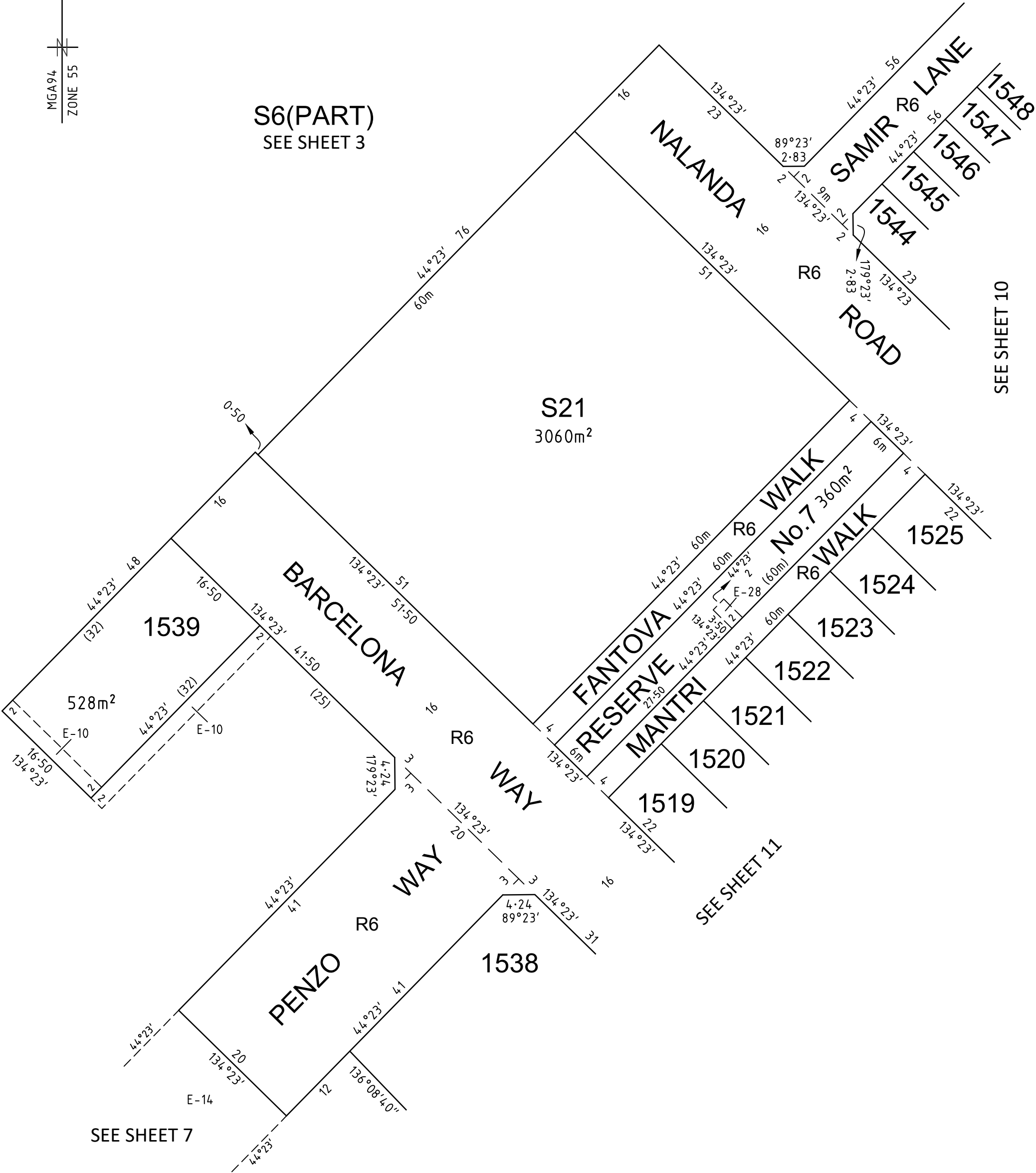
PS905192T/S5

SEE SHEET 10



S6(PART)
SEE SHEET 3

SEE SHEET 10



SEE SHEET 7

SEE SHEET 11

2070S-15 VER J.DWG AA/AA

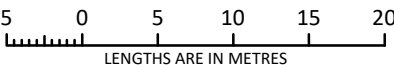


an su company

© SMEC AUSTRALIA PTY LTD (ABN 47 065 475 149)
TOWER 4, LEVEL 20, 727 COLLINS STREET
DOCKLANDS VIC 3008

REF 2070s-15

SCALE
1:500



Digitally signed by: Adrian Thomas, Licensed Surveyor,
Surveyor's Plan Version (J),
26/03/2025, SPEAR Ref: S223299J

ORIGINAL SHEET
SIZE: A3

SHEET 12

Digitally signed by:
Wyndham City Council,
29/04/2025,
SPEAR Ref: S223299J

PLAN OF SUBDIVISION

Under Section 37 of the Subdivision Act 1988

PLAN NUMBER

PS905192T/S5

SEE SHEET 3

**WARANA
WAY**

SLOOP

STREET

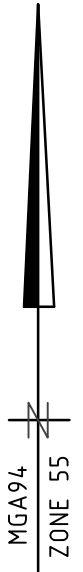
SEE SHEET 3

S6(PART)

5235m²

E-23

E-23



2070S-15 VER J.DWG AA/AA



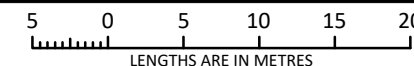
an  company

© SMEC AUSTRALIA PTY LTD (ABN 47 065 475 149)

TOWER 4, LEVEL 20, 727 COLLINS STREET
DOCKLANDS VIC 3008

REF 2070s-15

SCALE
1:500



ORIGINAL SHEET
SIZE A3

SHEET 13

Digitally signed by: Adrian Thomas, Licensed Surveyor,
Surveyor's Plan Version (J),
26/03/2025, SPEAR Ref: S223299J

Digitally signed by:
Wyndham City Council,
29/04/2025,
SPEAR Ref: S223299J

PLAN OF SUBDIVISION

Under Section 37 of the Subdivision Act 1988

PLAN NUMBER

PS905192T/S5

Upon registration of this plan the following restrictions are created:

The registered proprietors of the burdened land covenant with the registered proprietors of the benefited land as set out in the restriction with the intent that the burden of the restriction runs with and binds the burdened land and the benefit of the restriction is annexed to and runs with the benefited land.

CREATION OF RESTRICTION A

Table of Land Burdened and Land Benefited:

| BURDENED LOT No. | BENEFITING LOTS |
|------------------|------------------------------|
| 1501 | 1502, 1516 |
| 1502 | 1501, 1503, 1515, 1516 |
| 1503 | 1502, 1504, 1514, 1515 |
| 1504 | 1503, 1505, 1513, 1514 |
| 1505 | 1504, 1506, 1512, 1513 |
| 1506 | 1505, 1507, 1508, 1511, 1512 |
| 1507 | 1506, 1508 |
| 1508 | 1506, 1507, 1509, 1510, 1511 |
| 1509 | 1508, 1510 |
| 1510 | 1508, 1509, 1511 |
| 1511 | 1506, 1508, 1510, 1512 |
| 1512 | 1505, 1506, 1511, 1513 |
| 1513 | 1504, 1505, 1512, 1514 |
| 1514 | 1503, 1504, 1513, 1515 |
| 1515 | 1502, 1503, 1514, 1516 |
| 1516 | 1501, 1502, 1515 |
| 1517 | 1518 |
| 1518 | 1517 |
| 1519 | 1520 |
| 1520 | 1519, 1521 |
| 1521 | 1520, 1522 |
| 1522 | 1521, 1523 |
| 1523 | 1522, 1524 |
| 1524 | 1523, 1525 |
| 1525 | 1524 |
| 1536 | 1537 |
| 1537 | 1536, 1538 |

| BURDENED LOT No. | BENEFITING LOTS |
|------------------|-----------------|
| 1538 | 1537 |
| 1539 | 1538 |
| 1544 | 1545 |
| 1545 | 1544, 1546 |
| 1546 | 1545, 1547 |
| 1547 | 1546, 1548 |
| 1548 | 1547, 1549 |
| 1549 | 1548, 1550 |
| 1550 | 1549, 1551 |
| 1551 | 1550, 1552 |
| 1552 | 1551, 1553 |
| 1553 | 1552 |
| 1565 | 1566 |
| 1566 | 1565, 1567 |
| 1567 | 1566, 1568 |
| 1568 | 1567, 1569 |
| 1569 | 1568 |
| 1570 | 1571 |
| 1571 | 1570 |
| 1574 | 1575 |
| 1575 | 1574, 1576 |
| 1576 | 1575, 1577 |
| 1577 | 1576, 1578 |
| 1578 | 1577, 1579 |
| 1579 | 1578, 1580 |
| 1580 | 1579, 1581 |
| 1581 | 1580 |

DESCRIPTION OF RESTRICTION

The registered proprietor or proprietors for the time being of any burdened lot on the Plan of Subdivision must not without the consent of the Responsible Authority build or allow to be built on the lot:

Memorandum of Common Provisions (MCP)

1.
- Any building other than a building which has been constructed and sited in accordance with the Memorandum of Common Provisions registered in Dealing No. AA010483 and which Memorandum of Common Provisions is incorporated in this plan.

Small Lot Housing Code

2.
- Any building in the case of lots less than 300 square metres unless in accordance with the Small Lot Housing Code or unless a specific Planning Permit for the building has been obtained from Wyndham City Council.

The restrictions in paragraphs 1 and 2 shall cease to burden any lot on the Plan of Subdivision with affect from 31st December 2035.



| | | | | | | | | | | | | | | | | | | | | | | | | | | |
|---|-------------|--|--|------|-------------|-----------|--------------------|-----|-------------|-----------|--|--------|-------------|-----------|--|-------------|-----------|---------------|-------|------|------------------------|-------|-------|---------------|--------|-------|
| OWNERS CORPORATION SCHEDULE | | | | | | | PS905192T/S5 | | | | | | | | | | | | | | | | | | | |
| Owners Corporation No. 1 | | | | | | | Plan No. PS905192T | | | | | | | | | | | | | | | | | | | |
| Land affected by Owners Corporation: | | ALL LAND AFFECTED BY OWNERS CORPORATION 1 ON PREVIOUS STAGES OF THIS PLAN AND ALL OF THE LOTS IN THE TABLE BELOW Common Property No.: 1 | | | | | | | | | | | | | | | | | | | | | | | | |
| Limitations of Owners Corporation: | | Unlimited | | | | | | | | | | | | | | | | | | | | | | | | |
| Notations NIL | | | | | | | | | | | | | | | | | | | | | | | | | | |
| <table><tr><td colspan="3">Totals</td></tr><tr><td></td><td>Entitlement</td><td>Liability</td></tr><tr><td>This schedule</td><td>91400</td><td>5402</td></tr><tr><td>Balance of existing OC</td><td>23400</td><td>23400</td></tr><tr><td>Overall Total</td><td>114800</td><td>28802</td></tr></table> | | | | | | | | | | | | Totals | | | | Entitlement | Liability | This schedule | 91400 | 5402 | Balance of existing OC | 23400 | 23400 | Overall Total | 114800 | 28802 |
| Totals | | | | | | | | | | | | | | | | | | | | | | | | | | |
| | Entitlement | Liability | | | | | | | | | | | | | | | | | | | | | | | | |
| This schedule | 91400 | 5402 | | | | | | | | | | | | | | | | | | | | | | | | |
| Balance of existing OC | 23400 | 23400 | | | | | | | | | | | | | | | | | | | | | | | | |
| Overall Total | 114800 | 28802 | | | | | | | | | | | | | | | | | | | | | | | | |
| Lot Entitlement and Lot Liability | | | | | | | | | | | | | | | | | | | | | | | | | | |
| Lot | Entitlement | Liability | | Lot | Entitlement | Liability | | Lot | Entitlement | Liability | | Lot | Entitlement | Liability | | | | | | | | | | | | |
| 1501 | 100 | 100 | | 1577 | 100 | 100 | | | | | | | | | | | | | | | | | | | | |
| 1502 | 100 | 100 | | 1578 | 100 | 100 | | | | | | | | | | | | | | | | | | | | |
| 1503 | 100 | 100 | | 1579 | 100 | 100 | | | | | | | | | | | | | | | | | | | | |
| 1504 | 100 | 100 | | 1580 | 100 | 100 | | | | | | | | | | | | | | | | | | | | |
| 1505 | 100 | 100 | | 1581 | 100 | 100 | | | | | | | | | | | | | | | | | | | | |
| 1506 | 100 | 100 | | S6 | 85000 | 1 | | | | | | | | | | | | | | | | | | | | |
| 1507 | 100 | 100 | | S21 | 1000 | 1 | | | | | | | | | | | | | | | | | | | | |
| 1508 | 100 | 100 | | | | | | | | | | | | | | | | | | | | | | | | |
| 1509 | 100 | 100 | | | | | | | | | | | | | | | | | | | | | | | | |
| 1510 | 100 | 100 | | | | | | | | | | | | | | | | | | | | | | | | |
| 1511 | 100 | 100 | | | | | | | | | | | | | | | | | | | | | | | | |
| 1512 | 100 | 100 | | | | | | | | | | | | | | | | | | | | | | | | |
| 1513 | 100 | 100 | | | | | | | | | | | | | | | | | | | | | | | | |
| 1514 | 100 | 100 | | | | | | | | | | | | | | | | | | | | | | | | |
| 1515 | 100 | 100 | | | | | | | | | | | | | | | | | | | | | | | | |
| 1516 | 100 | 100 | | | | | | | | | | | | | | | | | | | | | | | | |
| 1517 | 100 | 100 | | | | | | | | | | | | | | | | | | | | | | | | |
| 1518 | 100 | 100 | | | | | | | | | | | | | | | | | | | | | | | | |
| 1519 | 100 | 100 | | | | | | | | | | | | | | | | | | | | | | | | |
| 1520 | 100 | 100 | | | | | | | | | | | | | | | | | | | | | | | | |
| 1521 | 100 | 100 | | | | | | | | | | | | | | | | | | | | | | | | |
| 1522 | 100 | 100 | | | | | | | | | | | | | | | | | | | | | | | | |
| 1523 | 100 | 100 | | | | | | | | | | | | | | | | | | | | | | | | |
| 1524 | 100 | 100 | | | | | | | | | | | | | | | | | | | | | | | | |
| 1525 | 100 | 100 | | | | | | | | | | | | | | | | | | | | | | | | |
| 1536 | 100 | 100 | | | | | | | | | | | | | | | | | | | | | | | | |
| 1537 | 100 | 100 | | | | | | | | | | | | | | | | | | | | | | | | |
| 1538 | 100 | 100 | | | | | | | | | | | | | | | | | | | | | | | | |
| 1539 | 100 | 100 | | | | | | | | | | | | | | | | | | | | | | | | |
| 1544 | 100 | 100 | | | | | | | | | | | | | | | | | | | | | | | | |
| 1545 | 100 | 100 | | | | | | | | | | | | | | | | | | | | | | | | |
| 1546 | 100 | 100 | | | | | | | | | | | | | | | | | | | | | | | | |
| 1547 | 100 | 100 | | | | | | | | | | | | | | | | | | | | | | | | |
| 1548 | 100 | 100 | | | | | | | | | | | | | | | | | | | | | | | | |
| 1549 | 100 | 100 | | | | | | | | | | | | | | | | | | | | | | | | |
| 1550 | 100 | 100 | | | | | | | | | | | | | | | | | | | | | | | | |
| 1551 | 100 | 100 | | | | | | | | | | | | | | | | | | | | | | | | |
| 1552 | 100 | 100 | | | | | | | | | | | | | | | | | | | | | | | | |
| 1553 | 100 | 100 | | | | | | | | | | | | | | | | | | | | | | | | |
| 1565 | 100 | 100 | | | | | | | | | | | | | | | | | | | | | | | | |
| 1566 | 100 | 100 | | | | | | | | | | | | | | | | | | | | | | | | |
| 1567 | 100 | 100 | | | | | | | | | | | | | | | | | | | | | | | | |
| 1568 | 100 | 100 | | | | | | | | | | | | | | | | | | | | | | | | |
| 1569 | 100 | 100 | | | | | | | | | | | | | | | | | | | | | | | | |
| 1570 | 100 | 100 | | | | | | | | | | | | | | | | | | | | | | | | |
| 1571 | 100 | 100 | | | | | | | | | | | | | | | | | | | | | | | | |
| 1574 | 100 | 100 | | | | | | | | | | | | | | | | | | | | | | | | |
| 1575 | 100 | 100 | | | | | | | | | | | | | | | | | | | | | | | | |
| 1576 | 100 | 100 | | | | | | | | | | | | | | | | | | | | | | | | |

| an company | | | | SURVEYORS FILE REFERENCE: 2070s-15 | | | | | | | SHEET 1 |
| Digitally signed by: Adrian Thomas, Licensed Surveyor, Surveyor's Plan Version (J), 26/03/2025, SPEAR Ref: S223299J | | | | | | | ORIGINAL SHEET SIZE: A3 |
| Digitally signed by: Wyndham City Council, 29/04/2025, SPEAR Ref: S223299J | | | | | | |