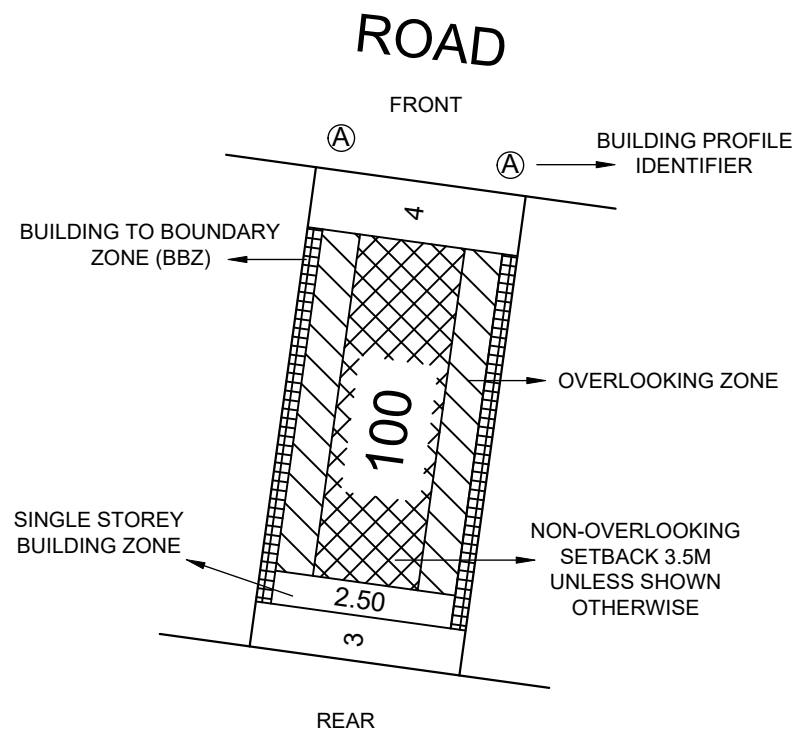


CORIDALE STAGE 14A BUILDING ENVELOPE PLAN

SEE PLAN OF SUBDIVISION PS821033G

LEGEND

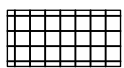
EXAMPLE OF TYPICAL BUILDING ENVELOPE SETBACK



NOTATIONS:

- THE FRONT AND SIDE SETBACKS ARE MEASURED TO THE OUTERMOST WALLS OF THE BUILDING.
- GARAGES MUST BE SETBACK A MINIMUM OF 5.0m FROM THE FRONT STREET BOUNDARY UNLESS OTHERWISE NOTED.
- WALLS LESS THAN 1m FROM THE BOUNDARY MUST BE WITHIN 200mm OF THE BOUNDARY.
- THE BBZ SHALL BE APPLICABLE TO ONE SIDE BOUNDARY ONLY, ONE SIDE BOUNDARY MUST BE KEPT CLEAR OF BUILDINGS. TERRACE STYLE LOTS ARE EXEMPT FROM THIS REQUIREMENT.
- THE SETBACK TO A SIDE STREET BOUNDARY FOR A CORNER LOT IS 2m UNLESS NOTED OTHERWISE.
- WHERE THE MINIMUM FRONT SETBACK IS 3.0m OR MORE, PORCHES, VERANDAHS AND ARCHITECTURAL FEATURES CAN ENCROACH INTO THE FRONT SETBACK BY UP TO 1.5m AT HEIGHTS OF UP TO 4.5m FOR A SINGLE STOREY HOME AND HEIGHTS OF UP TO 9.0m FOR A TWO-STOREY HOME.
- WHERE THE MINIMUM FRONT SETBACK IS LESS THAN 3.0m PORCHES, VERANDAHS, AND ARCHITECTURAL FEATURES CAN ENCROACH INTO THE FRONT SETBACK BY UP TO 1.0m AT HEIGHTS OF UP TO 4.5m FOR A SINGLE STOREY HOME AND HEIGHTS OF UP TO 9.0m FOR A TWO-STOREY HOME.
- TWO-STOREY DWELLINGS MUST BE SETBACK A MINIMUM OF 5.5m FROM THE REAR BOUNDARY UNLESS OTHERWISE NOTED.
- THE BUILDING REGULATIONS APPLY TO CONSTRUCTION OF DWELLINGS AND NEED TO BE ADHERED TO IN RELATION TO DESIGN PRINCIPLES.

SINGLE STOREY BUILDING ENVELOPE HATCH TYPE



BUILDING BOUNDARY ZONE (BBZ)



SINGLE STOREY BUILDING ZONE

DOUBLE STOREY BUILDING ENVELOPE HATCH TYPE



OVERLOOKING ZONE - Habitable room windows or raised open spaces are a source of overlooking



NON OVERLOOKING ZONE - Habitable room windows or raised open spaces are not a source of overlooking

THE REGISTERED PROPRIETOR OR PROPRIETORS OF THE LOT ARE REQUIRED TO BUILD IN ACCORDANCE WITH THE BUILDING ENVELOPES SHOWN HEREON AND IN THE "PROFILE DIAGRAMS" IN THIS DOCUMENT.



LyssnaGroup.com

Lyssna Group Pty Ltd
 ABN 18 616 811 191
 Tel: +61 3 9516 6899
 PO Box 1098, South Melbourne 3205
 Suite 3, 102 Dodds Street
 Southbank VIC 3006 Australia

Sheet 1 of 4

Version 1

Drawing Date

02/05/23

Job Number

AA0049

Drawing Number

BE141AA

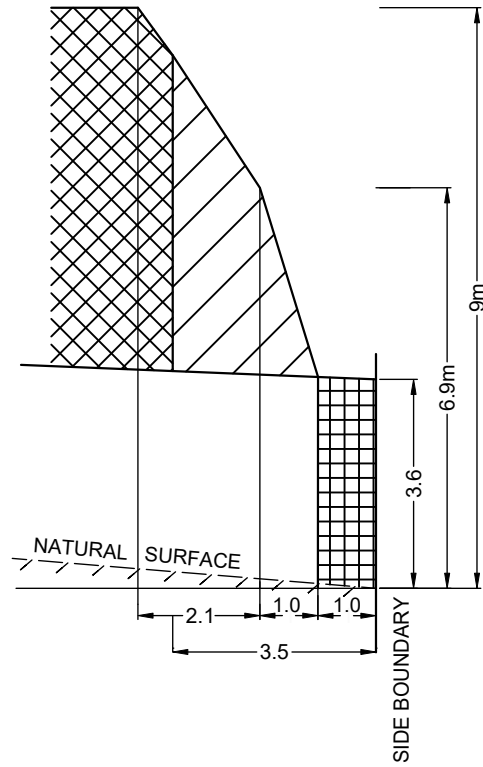
Drawn By

BA

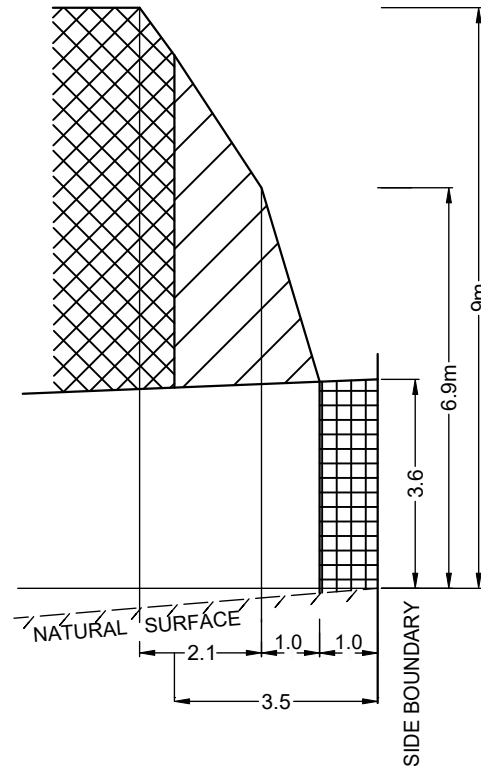
LEGEND CONTINUED

PROFILE DIAGRAMS

(A) PROFILE

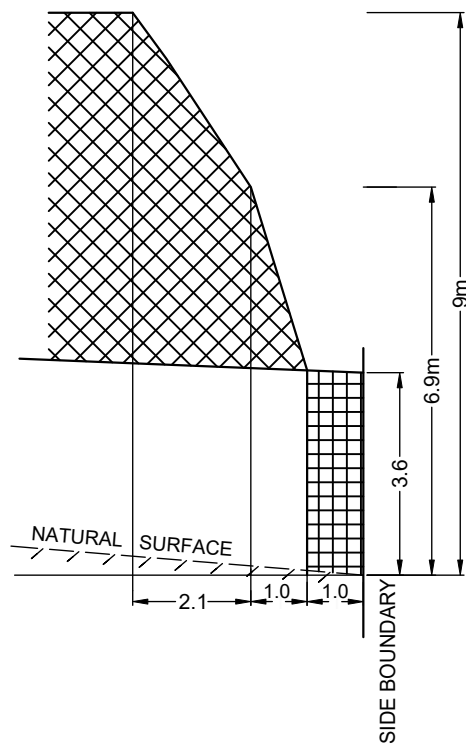


NATURAL SURFACE RISING FROM SIDE BOUNDARY

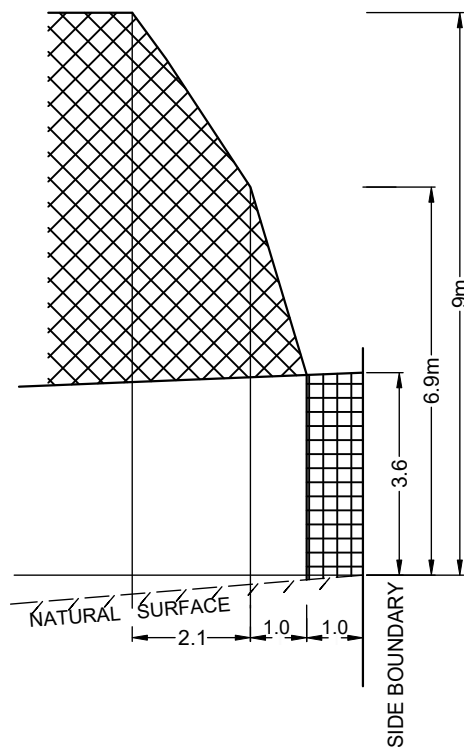


NATURAL SURFACE FALLING FROM SIDE BOUNDARY

(B) PROFILE



NATURAL SURFACE RISING FROM SIDE BOUNDARY

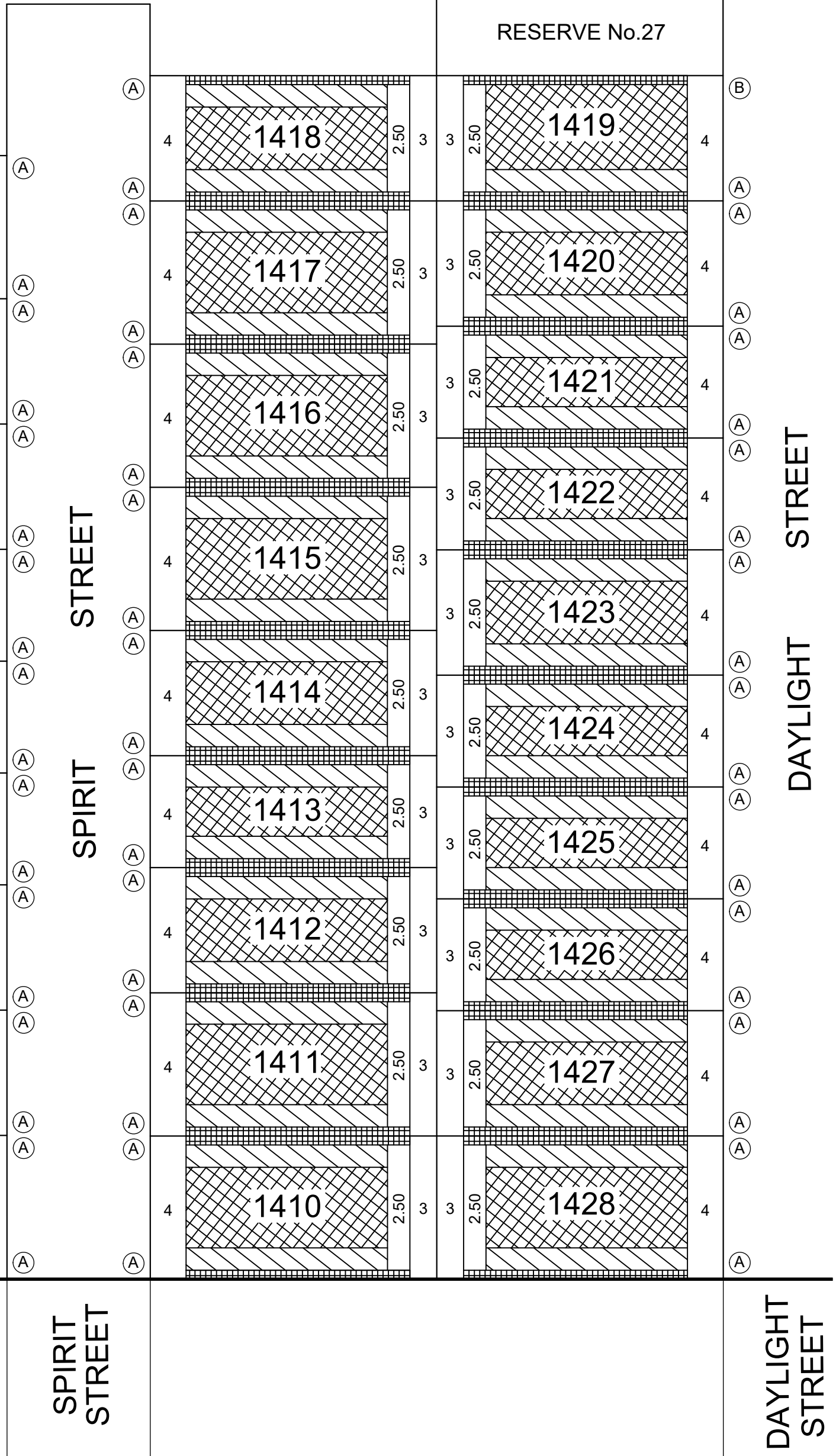


NATURAL SURFACE FALLING FROM SIDE BOUNDARY

BUILDING ENVELOPE PLAN

S27

RESERVE No.27



3

SHEET

SEE



Lyssna Group Pty Ltd
 ABN 18 616 811 191
 Tel: +61 3 9516 6899
 PO Box 1098, South Melbourne 3205
 Suite 3, 102 Dodds Street
 Southbank VIC 3006 Australia

CORIDALE ESTATE STAGE 14A

DATE: 02/05/23 DRAWING: BE141AA
 REFERENCE: AA0049 DRAWN BY: BA

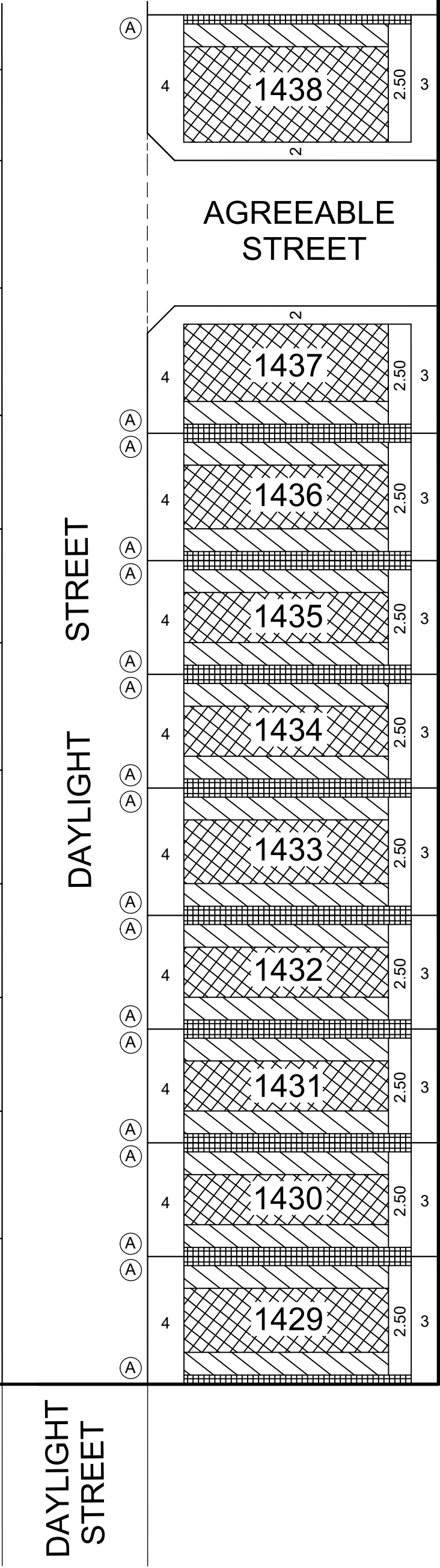
Scale
 1:500

SHEET 3 OF 4

BUILDING ENVELOPE PLAN

SEE SHEET 2

S27
RESERVE No.27
1419
1420
1421
1422
1423
1424
1425
1426
1427
1428



Lyssna Group Pty Ltd
 ABN 18 616 811 191
 Tel: +61 3 9516 6899
 PO Box 1098, South Melbourne 3205
 Suite 3, 102 Dodds Street
 Southbank VIC 3006 Australia

CORIDALE ESTATE STAGE 14A

DATE: 02/05/23 DRAWING: BE141AA
 REFERENCE: AA0049 DRAWN BY: BA

Scale 1:500