

Our Reference: 2898145
Planning Permit Number: PA/2849/2010

7 October 2014

Louise Krstic
Landscape Architect
GHD
L 8 180 Lonsdale Street
Melbourne Vic 3000

Dear Louise,

Re: Approval of Landscape Plans - Aspire Street Tree Plans - Stage 9

I write in relation to the abovementioned project and wish to confirm that the landscape plans have been approved by Council.

Please find attached stamped approved landscape plans. Council believes the list below represents the latest editions sent to us for approval.

<u>Drawing No.</u>	<u>Page No.</u>	<u>Revision No.</u>
31-26332	L901	A
31-26332	L902	A
31-26332	L903	A
31-26332	L904	A

Please note the following:

- This approval is subject to prior compliance of all statutory and legal obligations by the developer. Also that the developer and their landscape consultants take full responsibility for the design contained in the plans above.
- Council's Engineering Services Unit (Att: Infrastructure Planning Coordinator) must be provided with a letter requesting a pre-commencement meeting prior to starting works.

- The approval of these plans is valid for one year and where landscape works do not commence within that time, the plans must be resubmitted to Council for assessment using landscape standards that apply at that time.
- Any landscape or associated works will not be maintained by Council unless it is on Council land or the land has been transferred to Council.

Should you have any queries regarding this project please feel free to contact me on (03) 9747 5494.

Yours sincerely,



Andrew Hepburn

LANDSCAPE DEVELOPMENT SUPERVISOR

Encl

CC Contractor

Russell Beer (Environmental Services Coordinator) or Rishi Viner (Civil Operations Coordinator)

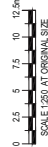
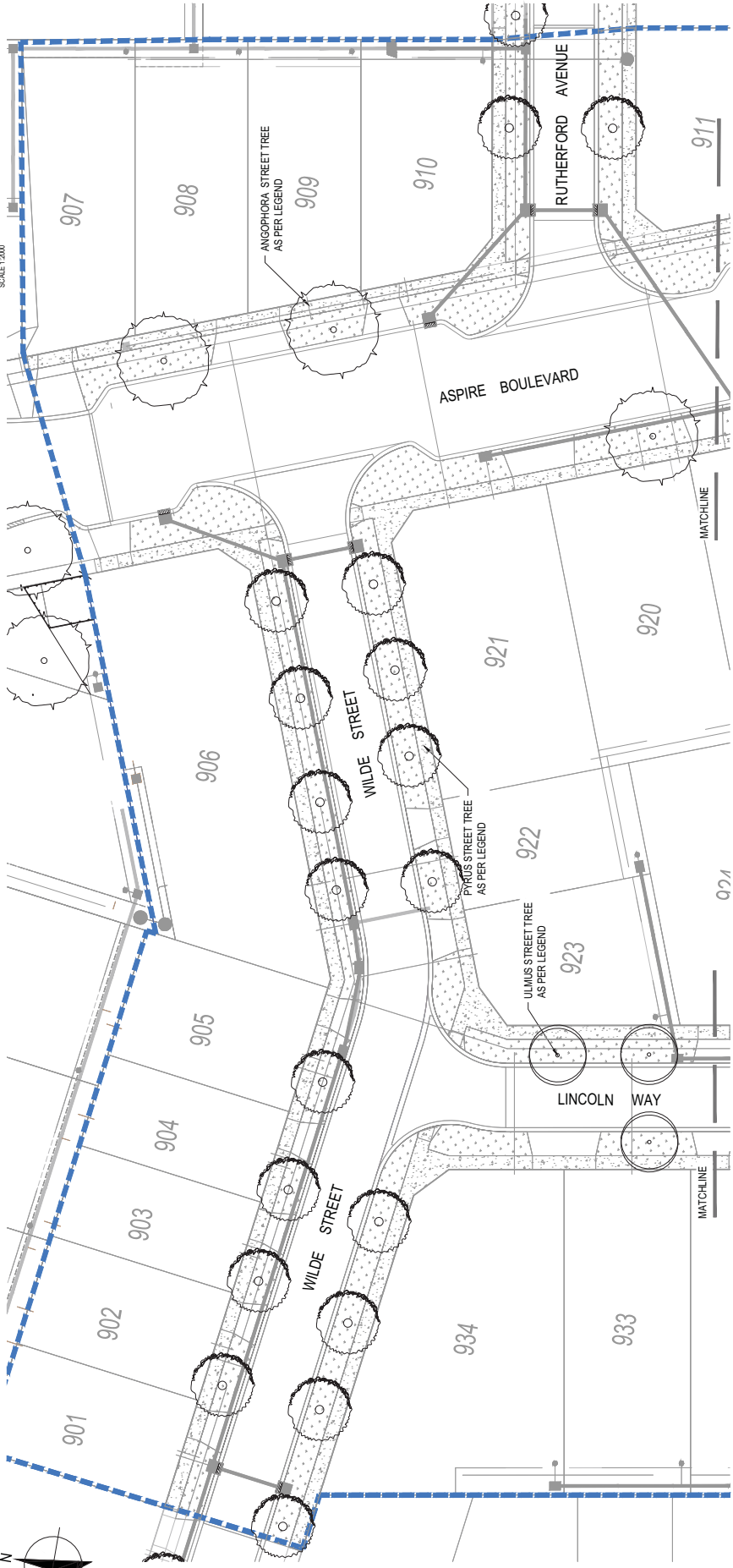
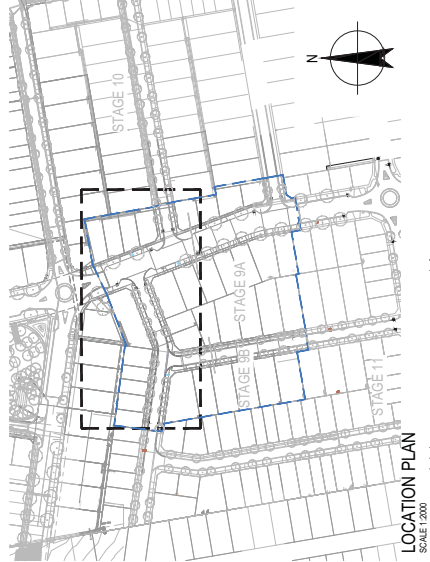
John Miller (Asset Management Coordinator)

Bronwyn Richards (Principal Construction Supervisor)

LEGEND

- CONCRETE BY CIVIL CONTRACTOR
- GRASS AREAS HYDROSEED
- STAGE BOUNDARY
- STREET TREE - *Argophora costata*
- STREET TREE - *Pyrus calleryana* 'Chanticleer'
- STREET TREE - *Ulmus parvifolia* 'Todd'

PLANT SCHEDULE STAGE 9A SPECIES	COMMON NAME	PLANTS COMP	PLANT SIZE	QUANTITY	COMMENTS
ADVANCE TREE PLANTING STRATEGIES					
ARGO	<i>Argophora costata</i>	ALL SKYDWN	100 Lx 150mm	3	
CHN	<i>Pyrus calleryana</i> 'Chanticleer'	ALL SKYDWN	45 Lx 30mm	18	
ULM	<i>Ulmus parvifolia</i> 'Todd'	ALL SKYDWN	15 Lx 30mm	3	
				TOTAL PLANTS	24



CITY OF MELTON
LANDSCAPE DEVELOPMENT PLANS
APPROVED
09/10/2014
ENGINEERING SERVICES DATE



WARNING
ALL SERVICES SHOWN ON THIS DRAWING ARE APPROXIMATE ONLY AND EXACT LOCATION IS TO BE DETERMINED BY FIELD SURVEY PRIOR TO COMMENCEMENT OF ANY WORKS.

PRELIMINARY

VILLAWOOD PROPERTIES ASPIRE DEVELOPMENT
STAGE 9A STREET TREE PLAN
SHEET 1 of 2

Client: Villawood Properties
Project: Aspire Development
Title: Stage 9A Street Tree Plan
Sheet No: 31-26332-L901
Scale: 1:250
Date: 26.09.14

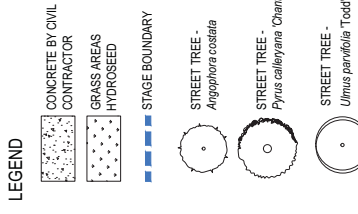
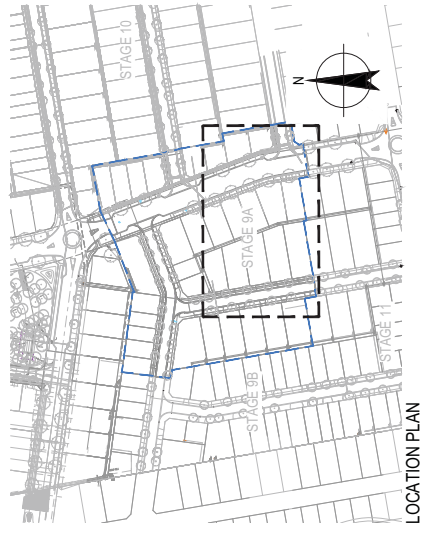
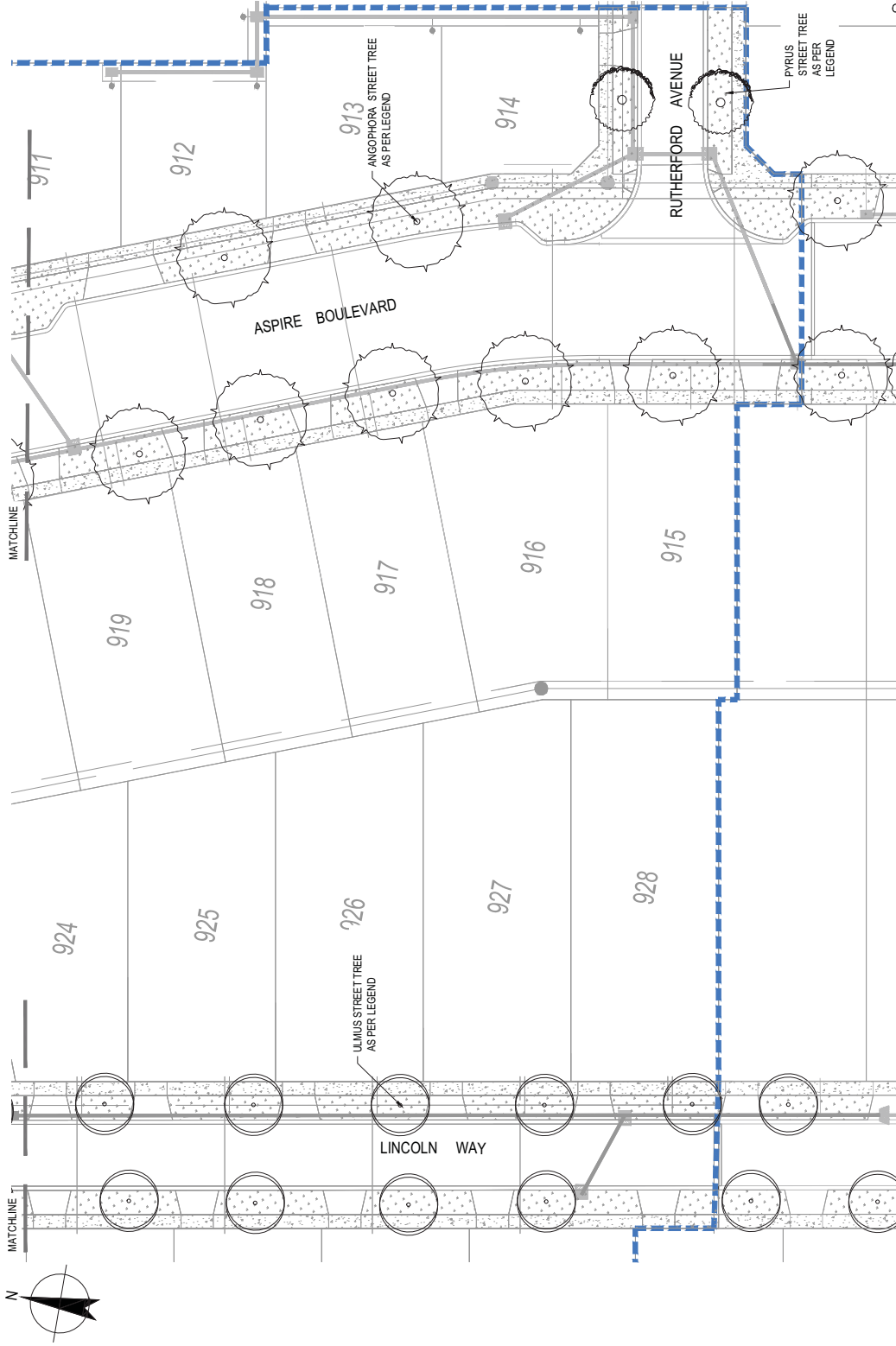
DO NOT SCALE
This drawing must not be used for construction unless approved as shown.



FOR CONTINUATION REFER DWG 31-26332-L902

No.	Revision	Date	By	Check	Appr.
A	ISSUE FOR APPROVAL	26.09.14	LK	GC	GC

FOR CONTINUATION REFER DWG 31-26332-L901



PLANT SCHEDULE STAGE 9A

NO	COMMON NAME	PLANTS COMP	PLANT SIZE	QUANTITY	COMMENTS
1	ANGOPHORA COSTATA	AS	100 LIME 50mm	7	
2	CHANTICLEER	AS	40 LIME 30mm	2	
3	ULMUS PARVIFOLIA 'TODD'	AS	40 LIME 30mm	9	
TOTAL PLANTS				18	



Level 8, 150 Lonsdale Street, Melbourne VIC 3000 Australia
 T 61 3 9877 8000 F 61 3 9877 8111
 E melb@ghd.com.au W www.ghd.com

DO NOT SCALE

Conditions of Use
 This document may only be used by
 the client and any other persons who
 are named in the title block for the
 purpose for which it was prepared
 and for no other purpose.

Drawn: [Name]
 Drafting: [Name]
 Design: [Name]
 Check: [Name]

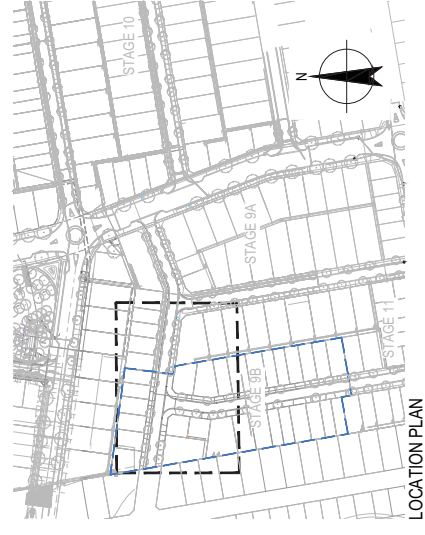
Client: **VILLAWOOD PROPERTIES**
 Project: **ASPIRE DEVELOPMENT**
 Title: **STAGE 9A STREET TREE PLAN**
 SHEET 2 of 2

Scale: 1:250 AT ORIGINAL SIZE
 0 2.5 5 7.5 10 12.5m



WARNING
 ALL SERVICES SHOWN ON THIS DRAWING ARE
 TO BE CONFIRMED ON SITE BY CONTRACTOR
 PRIOR TO COMMENCEMENT OF ANY WORKS.

PRELIMINARY

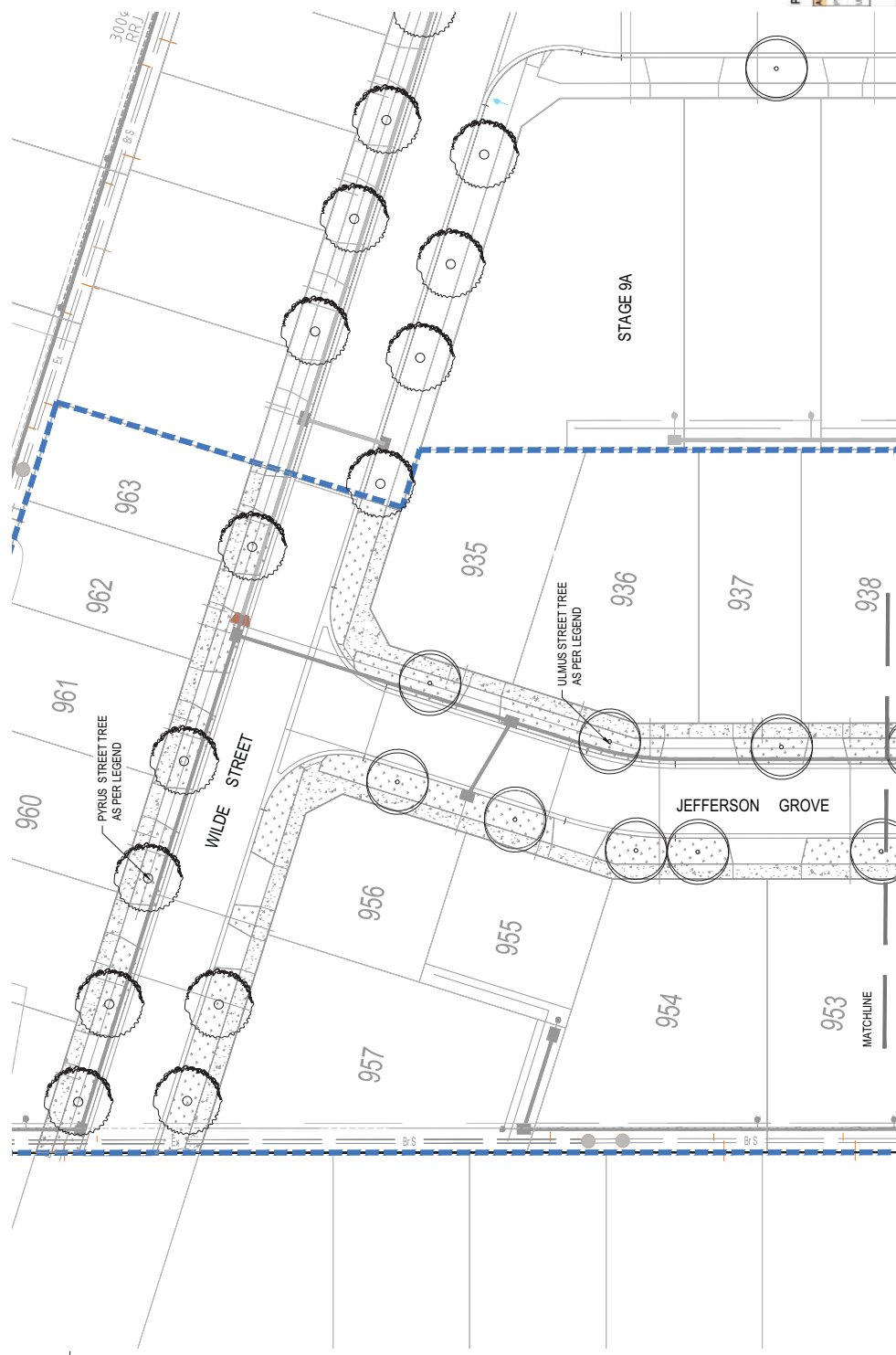


LOCATION PLAN
SCALE 1:200

LEGEND

- CONCRETE BY OVAL CONTRACTOR
- GRASS AREAS HYDROSEED
- STAGE BOUNDARY
- STREET TREE - *Ulmus parvifolia* 'Todd'
- STREET TREE - *Pyrus calleryana* 'Chanticleer'

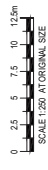
PLANT SCHEDULE STAGE 9B	COMMON NAME	PLANT SIZE	PLANT SIZE SHOWN	QUANTITY	COMMENTS
FRCH	<i>Pyrus calleryana</i> 'Chanticleer'	45 Lm 20mm CA 2 FINISH	AS SHOWN	7	
ULM per 1	<i>Ulmus parvifolia</i> 'Todd'	45 Lm 20mm CA 2 FINISH	AS SHOWN	8	
				TOTAL PLANTS	15



FOR CONTINUATION REFER DWG 31-26332-L904



WARNING
ALL SERVICES SHOWN ON THIS DRAWING ARE PRELIMINARY AND MUST BE CONFIRMED ON SITE BY CONTRACTOR PRIOR TO COMMENCEMENT OF ANY WORKS.



PRELIMINARY

Client: **VILLAWOOD PROPERTIES**
Project: **ASPIRE DEVELOPMENT**
Title: **STAGE 9B STREET TREE PLAN**
Sheet: **SHEET 1 of 2**
Drawing No: **31-26332-L903**

Design: []
Check: []
Drawn: []
Scale: 1:250

DO NOT SCALE
Conditions of Use: This document may only be used by the client and any other persons who are authorised in writing by GHD for the purpose for which it was prepared and for no other purpose.



Rev	Date	By	Check	Description
A	26/09/14	DK	GC	ISSUE FOR APPROVAL

