

Our Reference: 2676919
Planning Permit Number: PA/2849/2010

26 March 2014

Greg Cater - Senior Landscape Architect
Ghd
L 8 180 Lonsdale Street
Melbourne Vic 3000

Dear Greg,

Re: Approval of Landscape Plans - Landscape Package Reserve - Aspire Estate Stage 8

I write in relation to the abovementioned project and wish to confirm that the landscape plans have been approved by Council.

Please find attached stamped approved landscape plans. Council believes the list below represents the latest editions sent to us for approval.

<u>Drawing No.</u>	<u>Page No.</u>	<u>Revision No.</u>
31-26332-L804	01	A
31-26332-L805	02	A
31-26332-L806	03	A
31-26332-L807	04	A
31-26332-L808	05	A
31-26332-L809	06	A
31-26332-L810	07	A
31-26332-L811	08	A
31-26332-L812	09	A
31-26332-L813	10	A

Please note the following:

- This approval is subject to prior compliance of all statutory and legal obligations by the developer. Also that the developer and their landscape consultants take full responsibility for the design contained in the plans above.
- Council's Engineering Services Unit (Att: Infrastructure Planning Coordinator) must be provided with a letter requesting a pre-commencement meeting prior to starting works.

- The approval of these plans is valid for one year and where landscape works do not commence within that time, the plans must be resubmitted to Council for assessment using landscape standards that apply at that time.
- Any landscape or associated works will not be maintained by Council unless it is on Council land or the land has been transferred to Council.

Should you have any queries regarding this project please feel free to contact me on (03) 9747 5494.

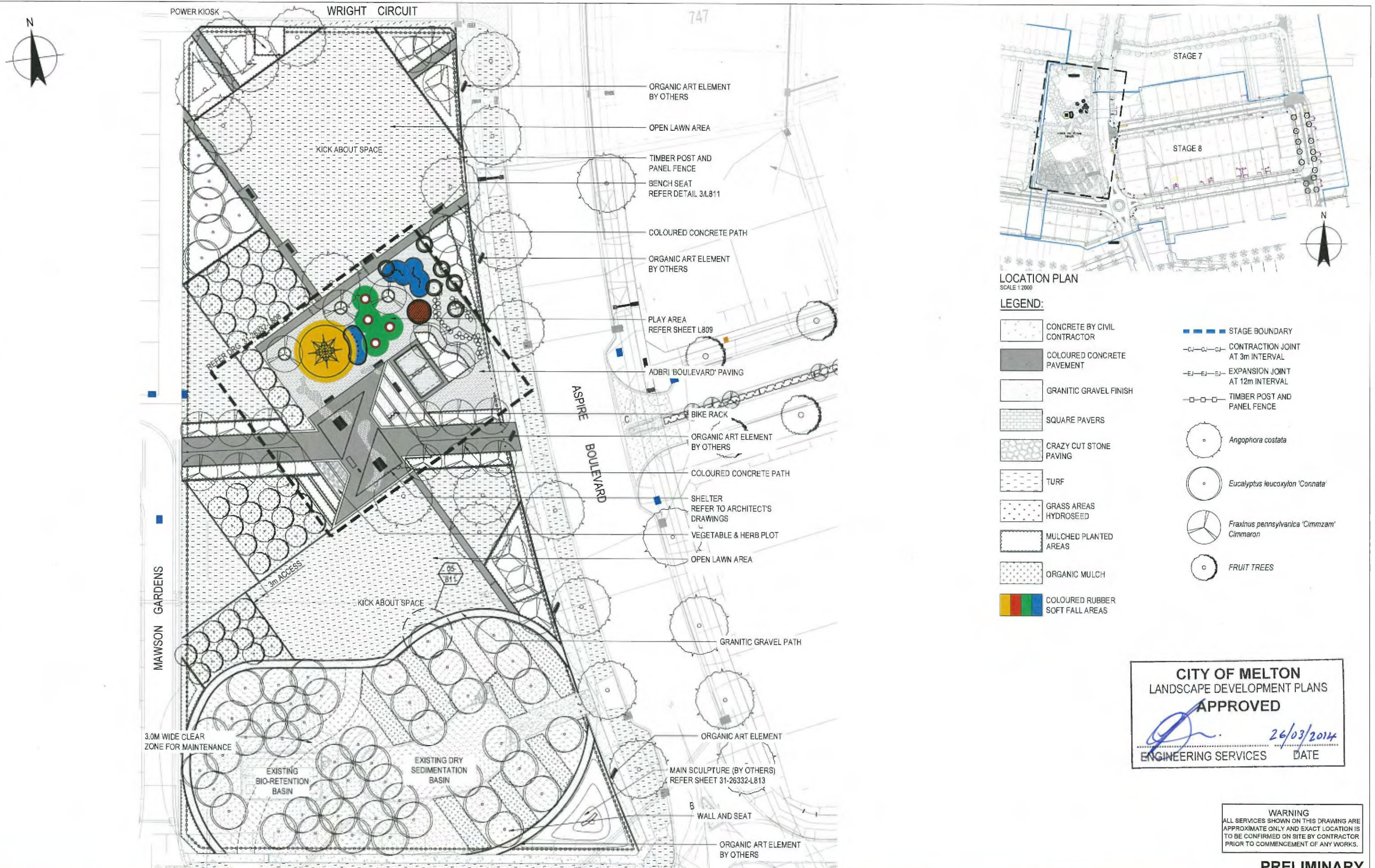
Yours sincerely,



Andrew Hepburn
LANDSCAPE DEVELOPMENT SUPERVISOR

Encl

CC Russell Beer (Environmental Services Coordinator)
John Miller (Asset Management Coordinator)
Bronwyn Richards (Principal Construction Supervisor)



- LOCATION PLAN**
SCALE 1:2000
- LEGEND:**
- CONCRETE BY CIVIL CONTRACTOR
 - COLOURED CONCRETE PAVEMENT
 - GRANITIC GRAVEL FINISH
 - SQUARE PAVERS
 - CRAZY CUT STONE PAVING
 - TURF
 - GRASS AREAS HYDROSEED
 - MULCHED PLANTED AREAS
 - ORGANIC MULCH
 - COLOURED RUBBER SOFT FALL AREAS
 - STAGE BOUNDARY
 - CONTRACTION JOINT AT 3m INTERVAL
 - EXPANSION JOINT AT 12m INTERVAL
 - TIMBER POST AND PANEL FENCE
 - Angophora costata*
 - Eucalyptus leucoxydon 'Connata'*
 - Fraxinus pennsylvanica 'Cinnamom'*
 - FRUIT TREES

CITY OF MELTON
LANDSCAPE DEVELOPMENT PLANS
APPROVED

26/03/2014
ENGINEERING SERVICES DATE

WARNING
ALL SERVICES SHOWN ON THIS DRAWING ARE APPROXIMATE ONLY AND EXACT LOCATION IS TO BE CONFIRMED ON SITE BY CONTRACTOR PRIOR TO COMMENCEMENT OF ANY WORKS.

PRELIMINARY

No	Revision	Note	Drawn	Job Manager	Project Director	Date
A	ISSUE FOR APPROVAL		KC	GC	SG	25.03.14

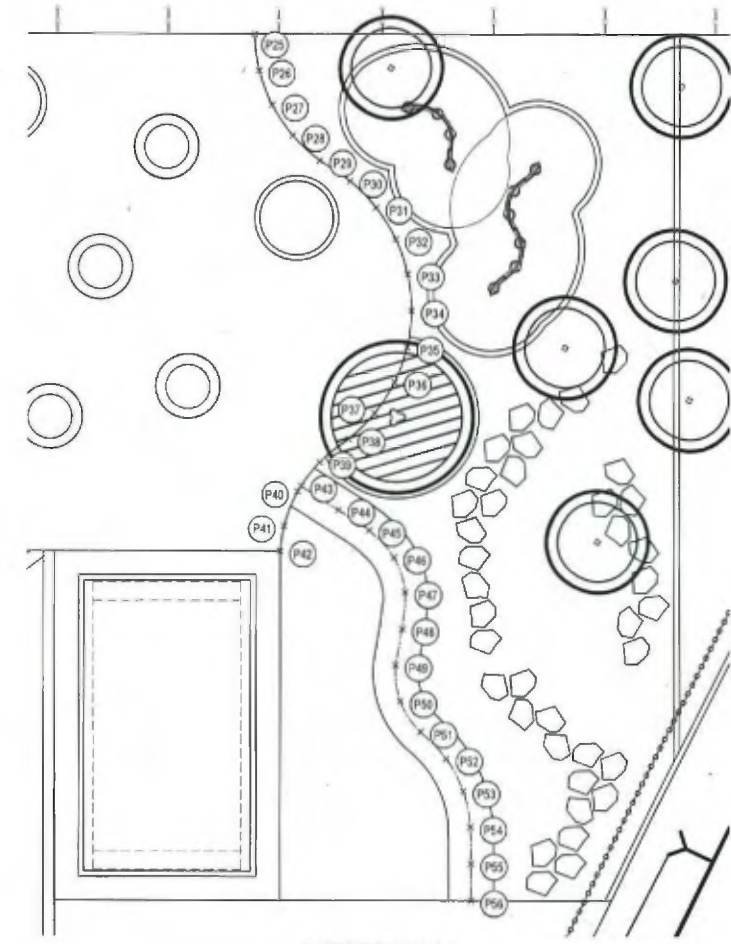
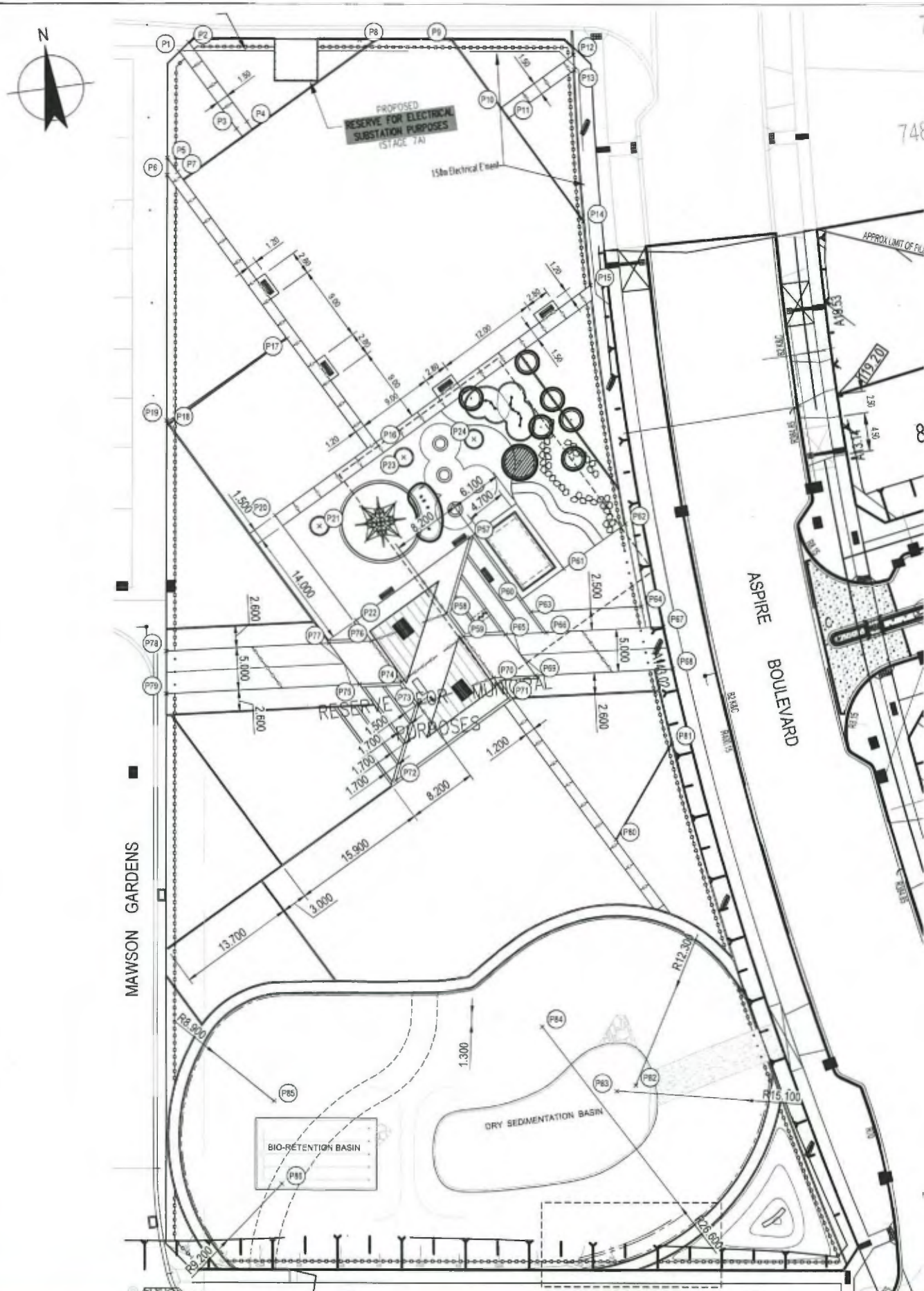


GHD

Level 8, 180 Lonsdale Street, Melbourne VIC 3000 Australia
T 61 3 8887 8000 F 61 3 8887 8111
E melma@ghd.com.au W www.ghd.com

DO NOT SCALE	Drawn K. CLEMENTE	Designer G. CATER
Conditions of Use. This document may only be used by GHD's client (and any other person who GHD has agreed can use this document) for the purpose for which it was prepared and must not be used by any other person or for any other purpose.	Drafting Check	Design Check
	Approved (Project Director) Date	
	Scale 1:300	This Drawing must not be used for construction unless signed as Approved

Client	VILLAWOOD PROPERTIES
Project	ASPIRE DEVELOPMENT
Title	STAGE 8 RESERVE GENERAL ARRANGEMENT
Original Size	A1
Drawing No:	31-26332-L804
Rev:	A



CURVED PATH
SCALE 1:100

SETOUT POINTS		
POINT	EASTING	NORTHING
P1	299482.439	5824723.930
P2	299483.647	5824724.848
P3	299487.813	5824714.042
P4	299489.151	5824714.758
P5	299479.378	5824711.762
P6	299479.104	5824709.753
P7	299480.244	5824709.983
P8	299503.447	5824722.515
P9	299514.054	5824721.097
P10	299518.934	5824712.432
P11	299519.650	5824711.114
P12	299528.097	5824717.436
P13	299527.972	5824715.637
P14	299528.662	5824697.896
P15	299528.556	5824690.397
P16	299499.096	5824675.475
P17	299490.440	5824688.894
P18	299475.500	5824680.777
P19	299475.228	5824681.282
P20	299486.315	5824688.528
P21	299491.254	5824666.512
P22	299494.023	5824655.076
P23	299502.079	5824673.289
P24	299510.535	5824674.312
P25	299507.143	5824678.139
P26	299507.728	5824677.332
P27	299508.485	5824675.882
P28	299509.373	5824676.226
P29	299510.342	5824675.966
P30	299511.336	5824675.886
P31	299512.290	5824675.965
P32	299513.156	5824675.089
P33	299513.891	5824674.423
P34	299514.458	5824673.602
P35	299514.829	5824672.576
P36	299514.985	5824671.590
P37	299514.920	5824670.595
P38	299514.636	5824669.738
P39	299514.254	5824668.818
P40	299514.106	5824667.829
P41	299514.225	5824666.838
P42	299514.457	5824666.181
P43	299514.115	5824668.000
P44	299515.315	5824667.920
P45	299516.310	5824667.830
P46	299517.250	5824667.504
P47	299517.967	5824666.819
P48	299518.373	5824665.907
P49	299518.681	5824664.957
P50	299519.264	5824664.155
P51	299520.137	5824663.684
P52	299521.087	5824663.379
P53	299521.914	5824662.824
P54	299522.547	5824662.055
P55	299523.039	5824661.184
P56	299523.518	5824660.305
P57	299508.520	5824662.954
P58	299504.618	5824654.431
P59	299506.212	5824651.494
P60	299513.622	5824654.928
P61	299518.988	5824657.844
P62	299526.832	5824662.107
P63	299514.503	5824653.306
P64	299527.393	5824652.223
P65	299511.161	5824651.578
P66	299515.932	5824650.577
P67	299528.593	5824646.529
P68	299530.009	5824644.476
P69	299514.919	5824645.821
P70	299509.099	5824648.237
P71	299510.489	5824643.624
P72	299496.080	5824635.793
P73	299495.932	5824644.203
P74	299498.336	5824647.139
P75	299493.386	5824647.555
P76	299495.478	5824652.397
P77	299490.522	5824652.814
P78	299471.570	5824654.407
P79	299470.895	5824649.446
P80	299520.765	5824625.448
P81	299528.708	5824635.813
P82	299519.173	5824596.581
P83	299518.866	5824596.196
P84	299509.248	5824604.800
P85	299476.577	5824800.371
P86	299478.563	5824590.958
P87	299508.307	5824576.984
P88	299509.303	5824577.043
P89	299510.299	5824577.139
P90	299511.292	5824577.256
P91	299512.282	5824577.399
P92	299513.287	5824577.568
P93	299514.248	5824577.763
P94	299515.223	5824577.985
P95	299516.192	5824578.233
P96	299517.153	5824578.507
P97	299518.105	5824578.812
P98	299519.046	5824579.152
P99	299519.973	5824579.526
P100	299520.887	5824579.933
P101	299521.784	5824580.374
P102	299522.617	5824580.813

*TO BE FINALIZED ONCE DESIGN IS APPROVED.

CITY OF MELTON
LANDSCAPE DEVELOPMENT PLANS
APPROVED

26/03/2014

ENGINEERING SERVICES DATE



WARNING
ALL SERVICES SHOWN ON THIS DRAWING ARE APPROXIMATE ONLY AND EXACT LOCATION IS TO BE CONFIRMED ON SITE BY CONTRACTOR PRIOR TO COMMENCEMENT OF ANY WORKS.

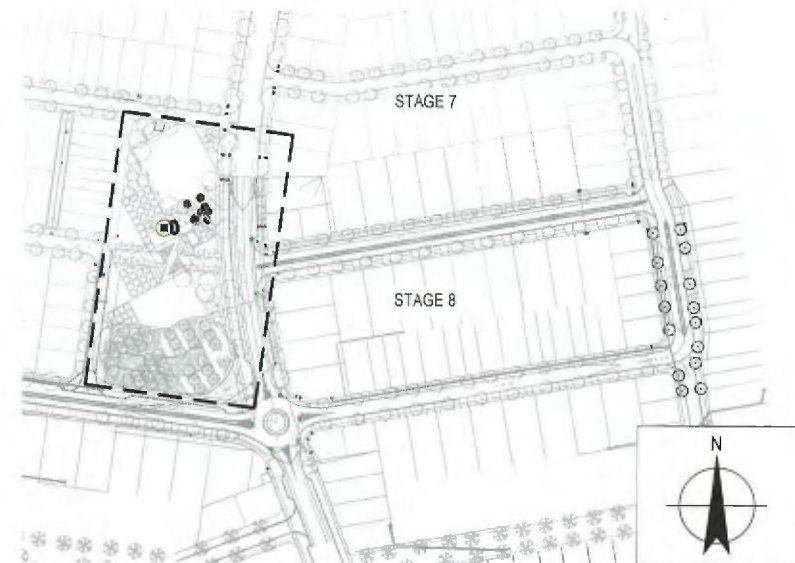
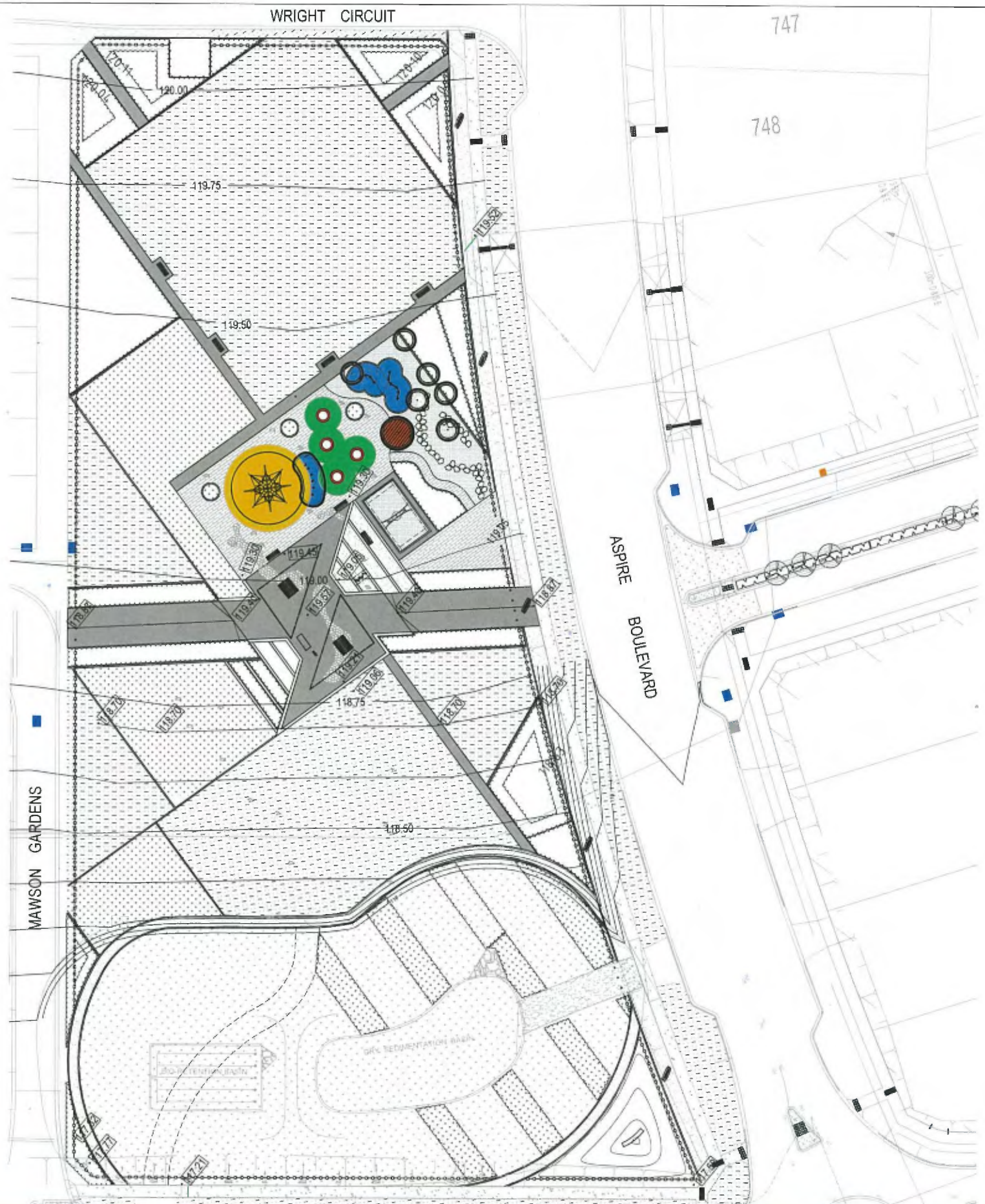
PRELIMINARY

No	Revision	Note	Drawn	Job Manager	Project Director	Date
A	ISSUE FOR APPROVAL		KC	GC	SG	19.03.14



GHD
Level 8, 180 Lonsdale Street, Melbourne VIC 3000 Australia
T 61 3 8687 6000 F 61 3 8687 8111
E mel@mail@ghd.com.au W www.ghd.com

DO NOT SCALE		Drawn	Designer	Client
		K. CLEMENTE	G. CATER	VILLAWOOD PROPERTIES
		Drafting Check	Design Check	Project
		Approved (Project Director)		ASPIRE DEVELOPMENT
		Date		Title
		Scale 1:300		STAGE 8 RESERVE SETOUT PLAN
		This Drawing must not be used for Construction unless signed as Approved.		Original Size
				A1 Drawing No: 31-26332-L805
				Rev: A



LOCATION PLAN
SCALE 1:2000

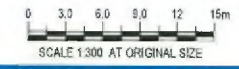
LEGEND:

- CONCRETE BY CIVIL CONTRACTOR
- COLOURED CONCRETE PAVEMENT
- GRANITIC GRAVEL FINISH
- SQUARE PAVERS
- CRAZY CUT STONE PAVING
- TURF
- GRASS AREAS HYDROSEED
- MULCHED PLANTED AREAS
- COLOURED RUBBER SOFT FALL AREAS
- STAGE BOUNDARY

CITY OF MELTON
LANDSCAPE DEVELOPMENT PLANS
APPROVED
[Signature] 26/03/2014
ENGINEERING SERVICES DATE



WARNING
ALL SERVICES SHOWN ON THIS DRAWING ARE APPROXIMATE ONLY AND EXACT LOCATION IS TO BE CONFIRMED ON SITE BY CONTRACTOR PRIOR TO COMMENCEMENT OF ANY WORKS.



PRELIMINARY

No	Revision	Note	Drawn	Job Manager	Project Director	Date
A	ISSUE FOR APPROVAL		KC	GC	SG	25.03.14



Level 6, 180 Lonsdale Street, Melbourne VIC 3000 Australia
T 61 3 8697 8000 F 61 3 3687 8111
E mel@mail@ghd.com.au W www.ghd.com

DO NOT SCALE

Conditions of Use.
This document may only be used by GHD's client (and any other person who GHD has agreed can use this document) for the purpose for which it was prepared and must not be used by any other person or for any other purpose.

Drawn	K. CLEMENTE	Designer	G. CATER
Drafting Check		Design Check	
Approved (Project Director)		Date	
Scale	1:300	This Drawing must not be used for construction unless signed as Approved	

Client	VILLAWOOD PROPERTIES
Project	ASPIRE DEVELOPMENT
Title	STAGE 8 RESERVE LEVELS PLAN
Original Size	A1
Drawing No:	31-26332-L806
Rev:	A



LOCATION PLAN
SCALE 1:2000

LEGEND:

- TURF
- MULCHED PLANTED AREAS
- ORGANIC MULCH
- STAGE BOUNDARY
- Angophora costata
- Eucalyptus leucocylon 'Connata'
- Fraxinus pennsylvanica 'Cimmaron'
- FRUIT TREES

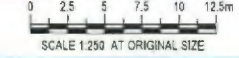
PLANT SCHEDULE STAGE 8

CODE	SPECIES	COMMON NAME	PLANTS/COMP m2	PLANT SIZE	QUANTITY	COMMENTS
ADVANCE TREE PLANTING STREETSCAPE						
ANG cos	Angophora costata	SMOOTH BARKED APPLE	AS SHOWN	100 Litre 50mm CAL 3.5m HIGH	18	
CIT lim	Citrus limon	MEYER LEMON	AS SHOWN	300mm	4	
CIT sin	Citrus sinensis	BERRI SELECTION VALENCIA	AS SHOWN	300mm	8	
EUC leu C	Eucalyptus leucocylon 'Connata'	YELLOW GUM	AS SHOWN	45 Litre 30mm CAL 2.5m HIGH	53	
FRA CC	Fraxinus pennsylvanica cimmaron	CIMMARON ASH	AS SHOWN	300 Litre 4.5-5.0m HIGH	20	
PYR ED	Pyrus calleryana 'Edgewood'	EDGEWOOD	AS SHOWN	100 Litre 50mm CAL 3.5m HIGH	30	
OLE eur	Olea europaea	OLIVE	AS SHOWN	100 Litre 50mm CAL 3.5m HIGH	4	
					TOTAL PLANTS	137
GROUNDCOVERS AND SHRUBS						
COT SS	Cotyledon orbiculata 'Silver Waves'	SILVER WAVES	3	200mm	261	
ERE SS	Eremophila glabra 'Silver Spread'	SILVER SPREAD	3	150mm	35	
FIC nod	Ficinia nodosa	KNOBBY CLUBBRUSH	4	140mm	1480	
LOM tan	Lomandra tanika	TANKA	6	150mm	1303	
PEL hor	Pelargonium hortorum	GERANIUM JULIUS	4	50mm	48	
PEL BR	Pelargonium x hortorum 'Callope Dark Red'	PELAGONIUM BIG RED	4	200mm	48	
SED aut	Sedum Autumn Joy	SEDUM	6	Large Tube	404	
TRA jas	Trachelospermum jasminoides	STAR JASMINE	4	200mm	742	
WES fru	Wisteria frutescens	COASTAL ROSEMARY	0.7	200mm	35	

CITY OF MELTON
LANDSCAPE DEVELOPMENT PLANS
APPROVED
ENGINEERING SERVICES
DATE 26/03/2014



WARNING
ALL SERVICES SHOWN ON THIS DRAWING ARE APPROXIMATE ONLY AND EXACT LOCATION IS TO BE CONFIRMED ON SITE BY CONTRACTOR PRIOR TO COMMENCEMENT OF ANY WORKS.



PRELIMINARY

No	Revision	Note: * indicates signatures on original issue of drawing or last revision of drawing	Drawn	Job Manager	Project Director	Date
A	ISSUE FOR APPROVAL		KC	GC	SG	25.03.14

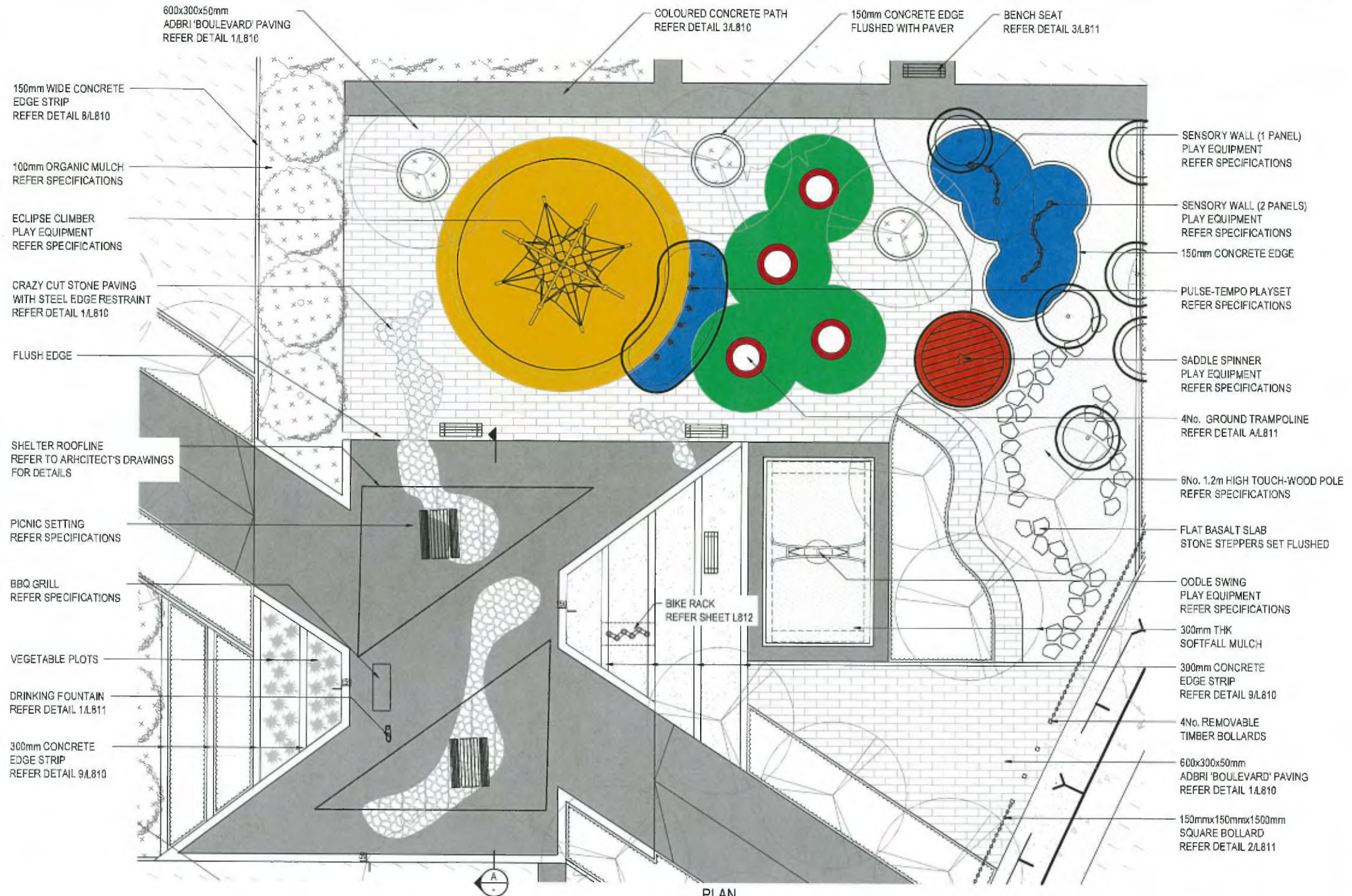
DO NOT SCALE
Conditions of Use:
This document may only be used by GHD's client (and any other person who GHD has agreed can use this document) for the purpose for which it was prepared and must not be used by any other person or for any other purpose.

Level 6, 180 Lonsdale Street, Melbourne VIC 3000 Australia
T 61 3 8667 8000 F 61 3 8667 8111
E mel@mail.ghd.com.au W www.ghd.com

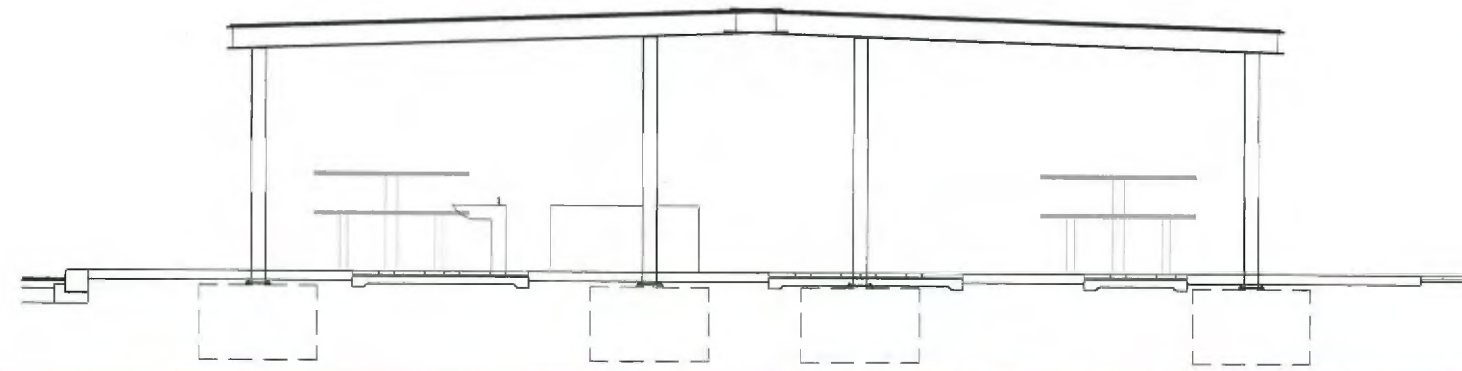
Drawn	K. CLEMENTE	Designer	G. CATER
Drafting Check		Design Check	
Approved (Project Director)		Date	
Scale	1:300	This Drawing must not be used for Construction unless signed as Approved	

Client **VILLAWOOD PROPERTIES**
Project **ASPIRE DEVELOPMENT**
Title **STAGE 8 RESERVE PLANTING PLAN**

Original Size **A1**
Drawing No: **31-26332-L807**
Rev: **A**



PLAN
SCALE 1:100



A SECTION
SCALE 1:25

CITY OF MELTON
LANDSCAPE DEVELOPMENT PLANS
APPROVED

[Signature] 26/03/2014
ENGINEERING SERVICES DATE



WARNING
ALL SERVICES SHOWN ON THIS DRAWING ARE APPROXIMATE ONLY AND EXACT LOCATION IS TO BE CONFIRMED ON SITE BY CONTRACTOR PRIOR TO COMMENCEMENT OF ANY WORKS.



PRELIMINARY

No	Revision	Note	Drawn	Job Manager	Project Director	Date
A	ISSUE FOR APPROVAL		KC	GC	SG	25.03.14

Plot Date: 25 March 2014 • 10:11 AM Plotted by: Greg Cator

Cad File No: G:\3126332\CADD\Drawings\Stage 8\31-26332-L808.dwg

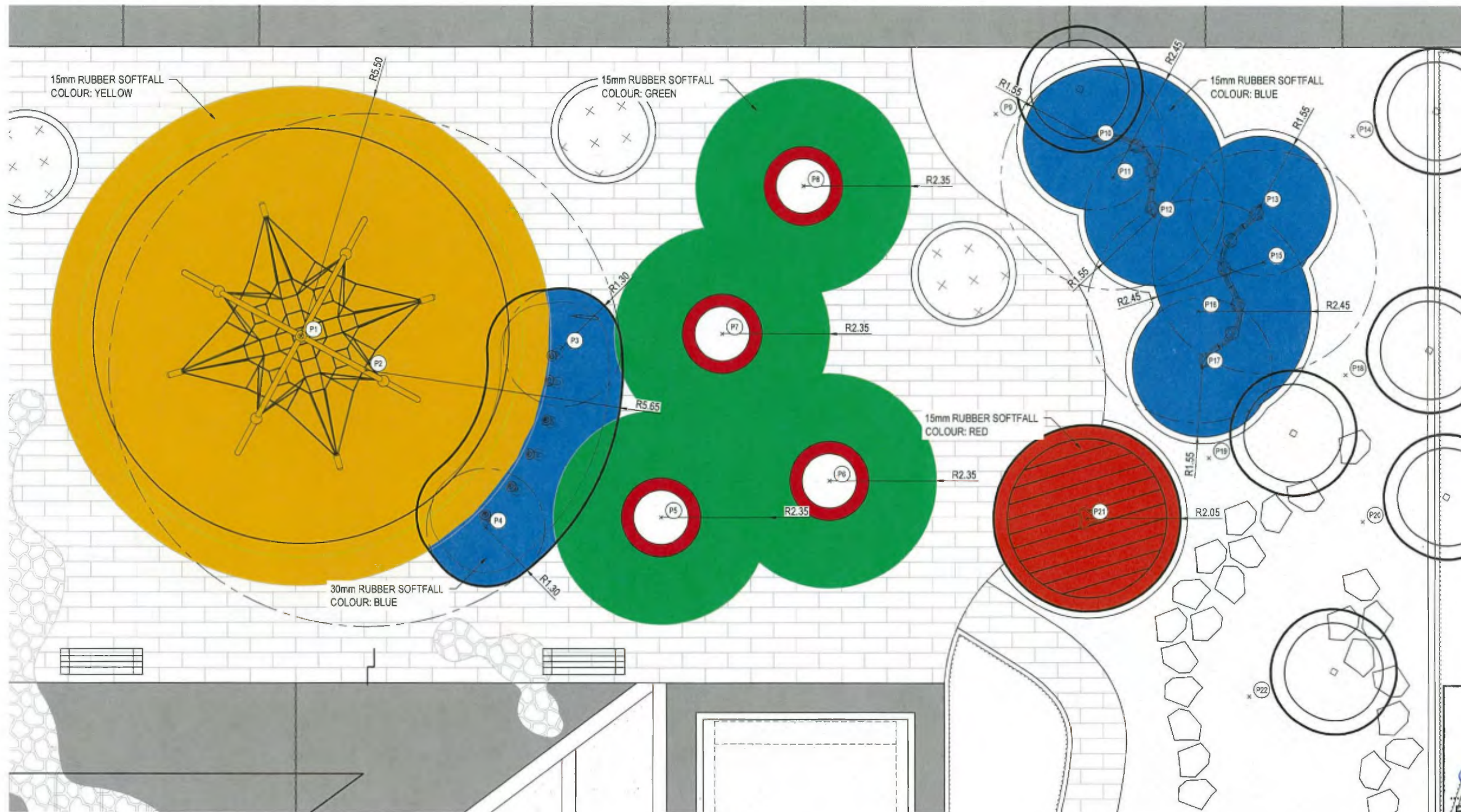


DO NOT SCALE

Conditions of Use:
This document may only be used by GHD's client (and any other person who GHD has agreed can use this document) for the purpose for which it was prepared and must not be used by any other person or for any other purpose.

Drawn	K. CLEMENTE	Designer	G. CATER
Drafting Check		Design Check	
Approved (Project Director)		Date	
Scale	1:100	This Drawing must not be used for Construction unless signed as Approved	

Client	VILLAWOOD PROPERTIES
Project	ASPIRE DEVELOPMENT
Title	STAGE 8 RESERVE CENTRAL PLAZA ENLARGEMENT
Original Size	A1
Drawing No:	31-26332-L808
Rev:	A

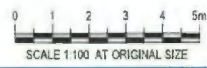


SETOUT POINTS		
POINT	EASTING	NORTHING
P1	299488.391	5824668.142
P2	299500.003	5824668.163
P3	299503.556	5824668.669
P4	299503.967	5824664.376
P5	299507.250	5824668.416
P6	299510.112	5824668.890
P7	299506.495	5824670.612
P8	299506.510	5824674.320
P9	299509.470	5824677.734
P10	299511.619	5824678.255
P11	299512.386	5824677.730
P12	299513.597	5824677.430
P13	299515.538	5824678.733
P14	299516.585	5824681.051
P15	299516.202	5824677.588
P16	299515.453	5824676.052
P17	299516.117	5824675.007
P18	299518.954	5824676.354
P19	299517.198	5824673.320
P20	299520.826	5824673.681
P21	299515.481	5824670.812
P22	299520.480	5824669.119

CITY OF MELTON
 LANDSCAPE DEVELOPMENT PLANS
APPROVED
 [Signature] 26/03/2014
 ENGINEERING SERVICES DATE



WARNING
 ALL SERVICES SHOWN ON THIS DRAWING ARE APPROXIMATE ONLY AND EXACT LOCATION IS TO BE CONFIRMED ON SITE BY CONTRACTOR PRIOR TO COMMENCEMENT OF ANY WORKS.



PRELIMINARY

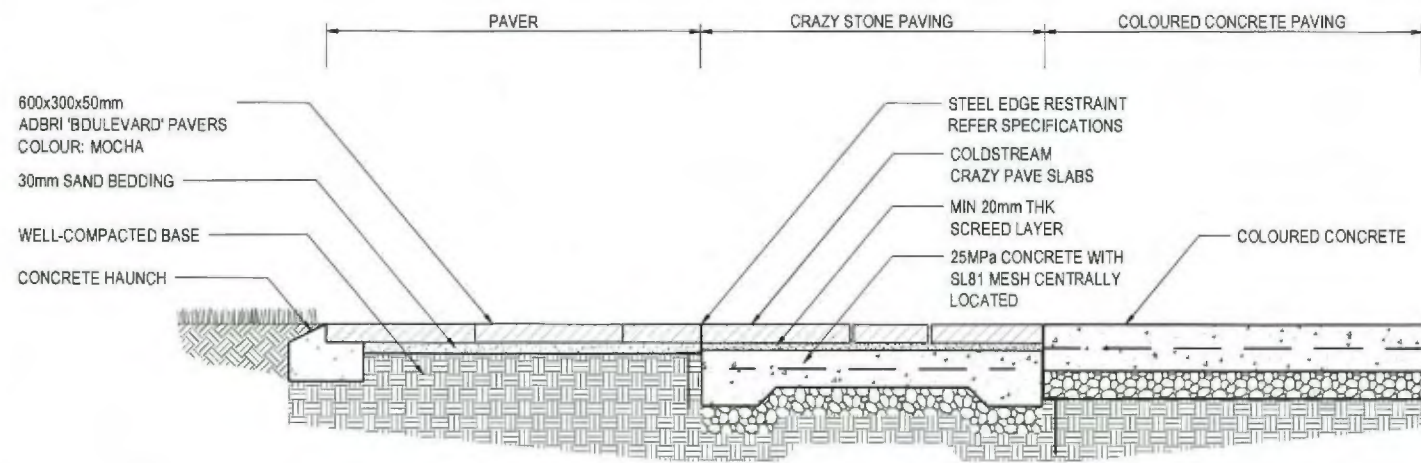
A ISSUE FOR APPROVAL					KC	GC	SG	25.03.14
No	Revision	Note	Drawn	Job Manager	Project Director	Date		



GHD
 Level 8, 180 Lonsdale Street, Melbourne VIC 3000 Australia
 T 61 3 8687 4000 F 61 3 8687 8111
 E mel@mail@ghd.com.au W www.ghd.com

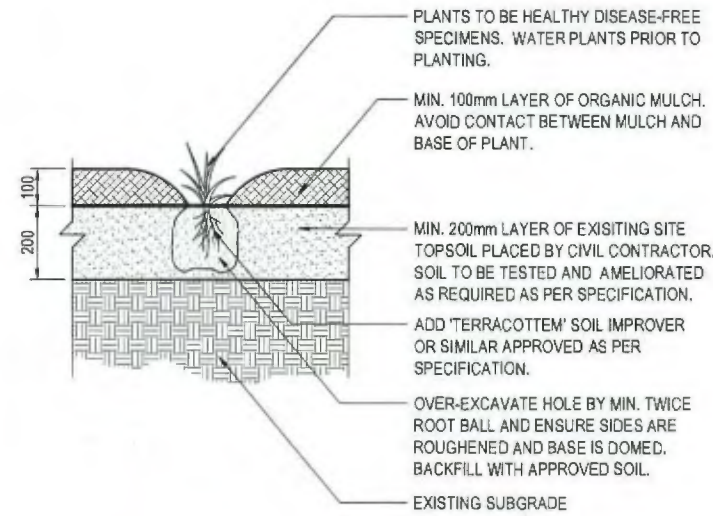
DO NOT SCALE	Drawn K. CLEMENTE	Designer G. CATER
Conditions of Use. This document may only be used by GHD's client (and any other person who GHD has agreed can use this document) for the purpose for which it was prepared and must not be used by any other person or for any other purpose.	Drafting Check	Design Check
	Approved (Project Director)	
	Date	
	Scale 1:100	This Drawing must not be used for Construction unless signed as Approved

Client	VILLAWOOD PROPERTIES
Project	ASPIRE DEVELOPMENT
Title	STAGE 8 RESERVE PLAY AREA SETOUT
Original Size	A1
Drawing No:	31-26332-L809
Rev:	A



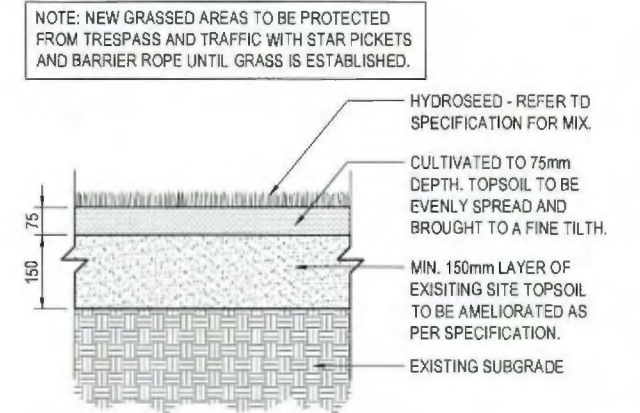
PAVER-CRAZY STONE PAVING-COLOURED CONCRETE PAVING

1 DETAIL SCALE 1:10



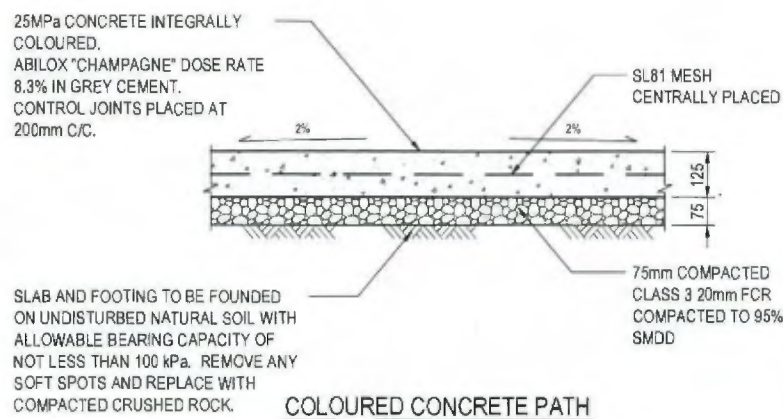
TYPICAL PLANTING IN ORGANIC MULCH

2 DETAIL SCALE 1:10



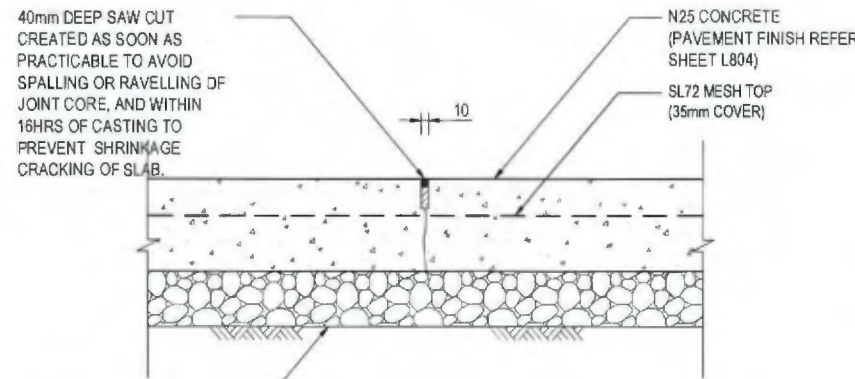
HYDROSEED

3 DETAIL SCALE 1:10



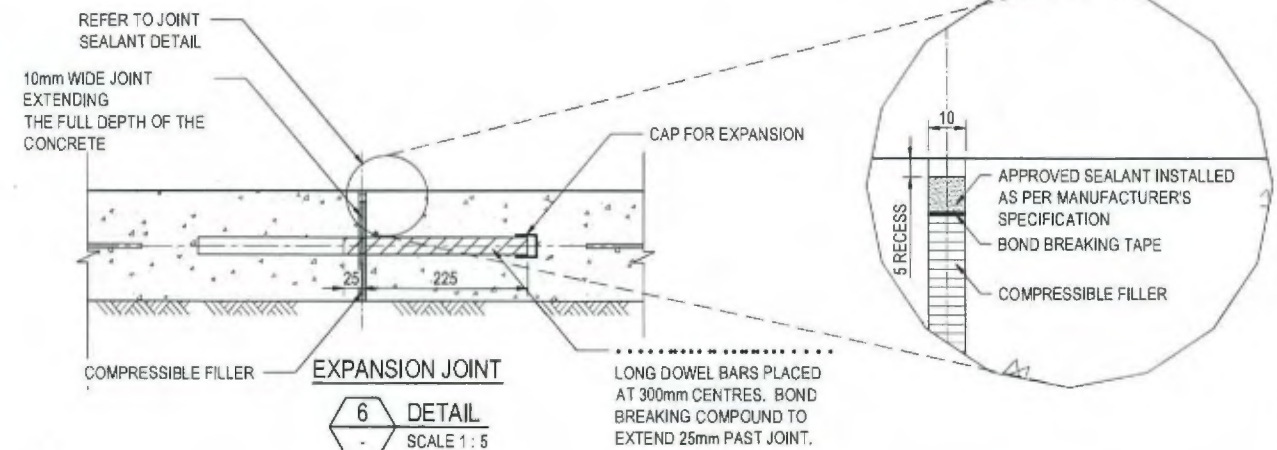
COLOURED CONCRETE PATH

4 DETAIL SCALE 1:10

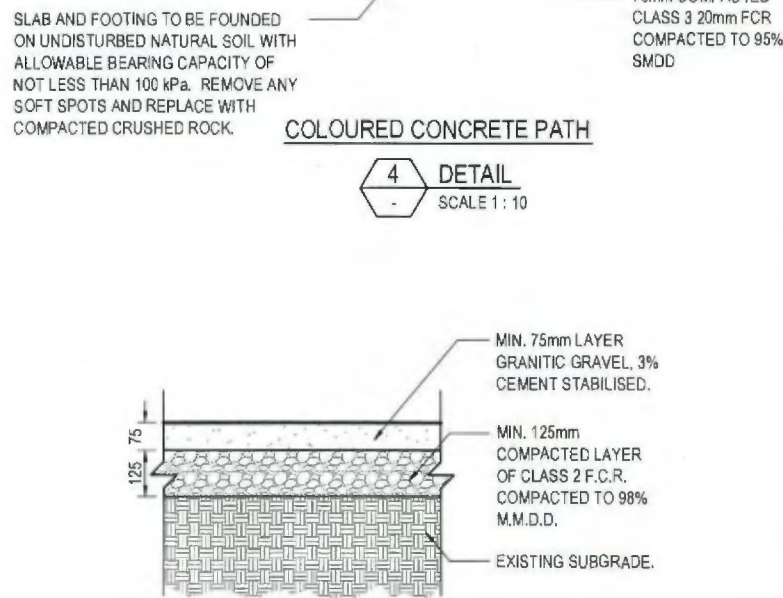


SAW CUT

5 DETAIL SCALE 1:5

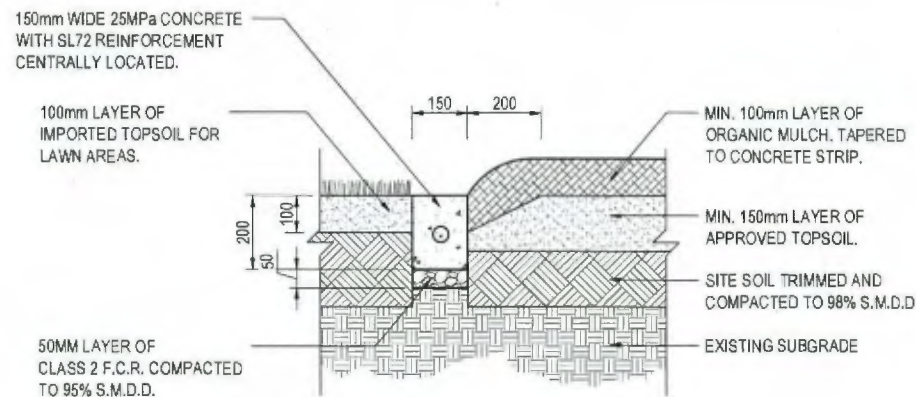


6 DETAIL SCALE 1:5



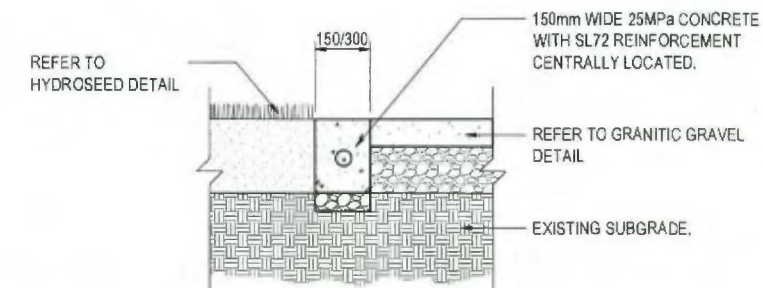
TYPICAL GRANITIC GRAVEL

7 DETAIL SCALE 1:10



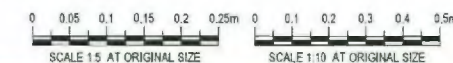
TYPICAL CONCRETE EDGE STRIP - MULCH

8 DETAIL SCALE 1:10



TYPICAL CONCRETE EDGE STRIP - GRANITIC GRAVEL

9 DETAIL SCALE 1:10



CITY OF MELTON
LANDSCAPE DEVELOPMENT PLANS
APPROVED
26/03/2014
ENGINEERING SERVICES DATE

PRELIMINARY

A	ISSUED FOR APPROVAL	KC	GC	SG	25.03.14	
No	Revision	Note	Drawn	Job Manager	Project Director	Date



Level 9, 180 Lonsdale Street, Melbourne VIC 3000 Australia
T 61 3 8687 6000 F 61 3 8687 8111
E mel@mail@ghd.com.au W www.ghd.com

DO NOT SCALE

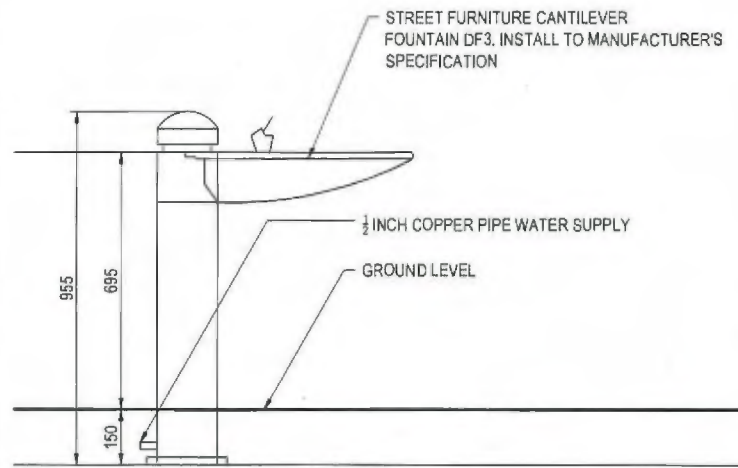
Conditions of Use.
This document may only be used by GHD's client (and any other person who GHD has agreed can use this document) for the purpose for which it was prepared and must not be used by any other person or for any other purpose.

Drawn	K. CLEMENTE	Designer	G. CATER
Drafting Check		Design Check	
Approved (Project Director)		Date	
Scale	AS SHOWN	This Drawing must not be used for Construction unless signed as Approved	

Client VILLAWOOD PROPERTIES
Project ASPIRE DEVELOPMENT
Title STAGE 8 LANDSCAPE DETAILS

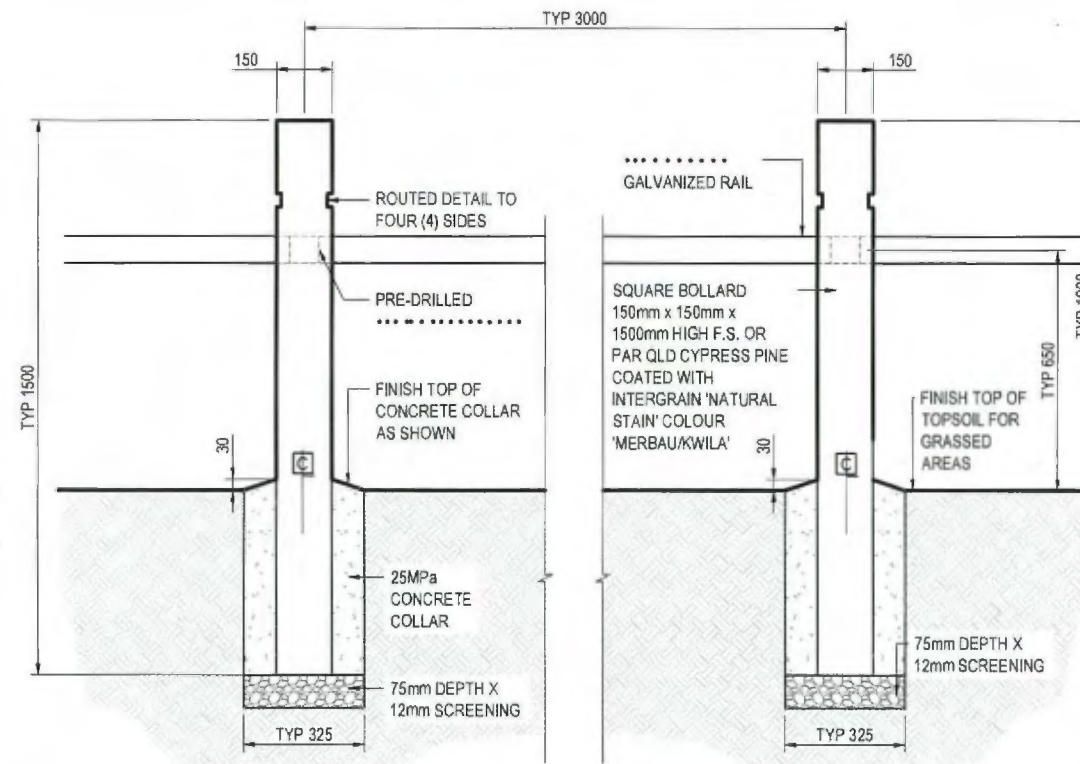
Original Size A1 Drawing No: 31-26332-L810

Rev: A



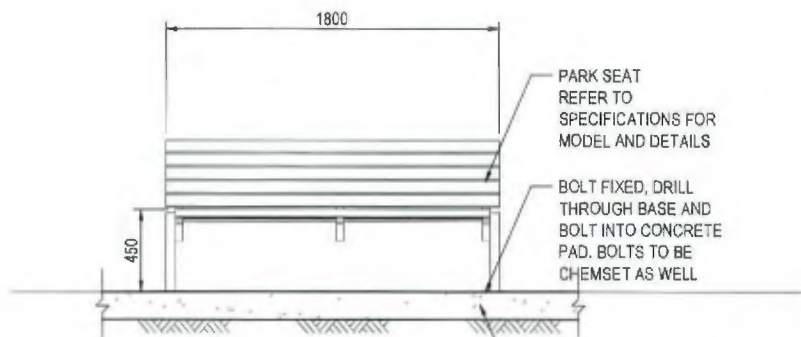
DRINKING FOUNTAIN

1 DETAIL
SCALE 1:10



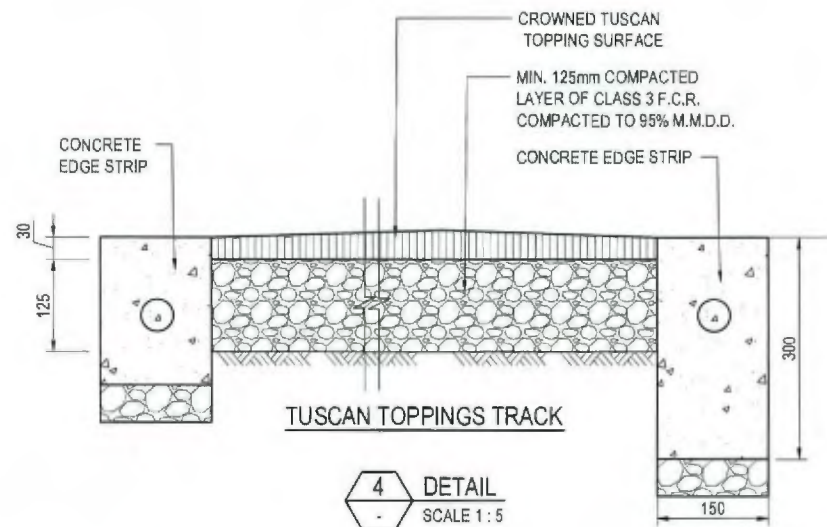
TIMBER POST AND RAIL BARRIER

2 DETAIL
SCALE 1:10



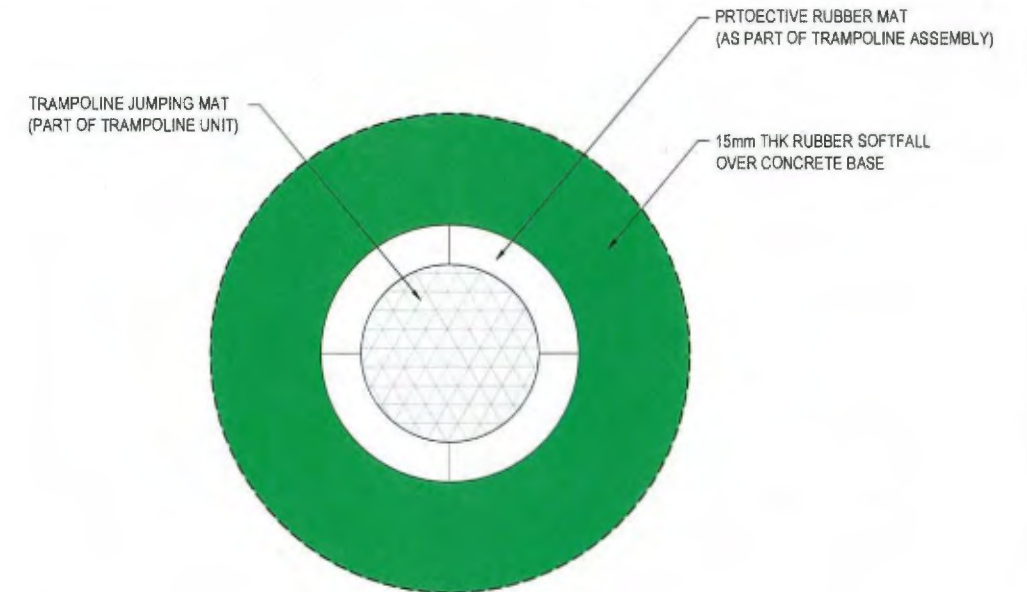
PARK SEAT FIXING DETAIL

3 DETAIL
SCALE 1:20

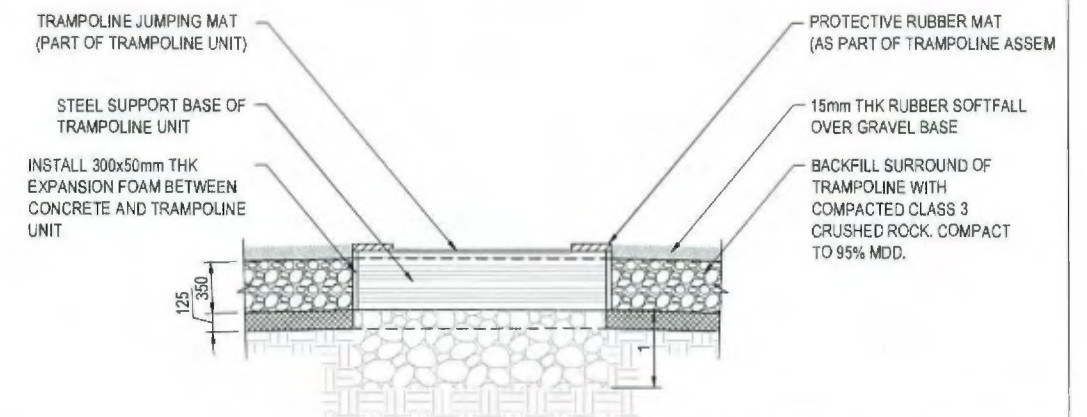


TUSCAN TOPPINGS TRACK

4 DETAIL
SCALE 1:5

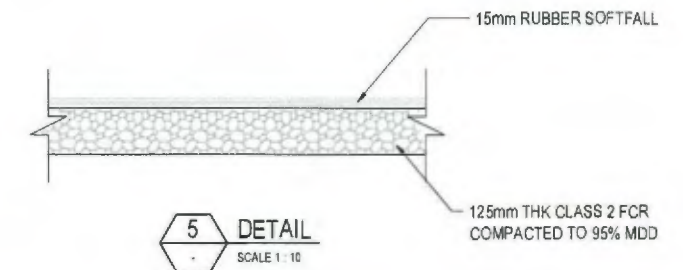


TRAMPOLINE UNIT
SCALE 1:25



A SECTION
SCALE 1:25

CITY OF MELTON
LANDSCAPE DEVELOPMENT PLANS
APPROVED
26/03/2014
ENGINEERING SERVICES DATE



5 DETAIL
SCALE 1:10

0 0.1 0.2 0.3 0.4 0.5m
SCALE 1:10 AT ORIGINAL SIZE

PRELIMINARY

A ISSUED FOR APPROVAL		KC	GC	SG	25.03.14	
No	Revision	Note	Drawn	Job Manager	Project Director	Date



Level 5, 180 Lonsdale Street, Melbourne VIC 3000 Australia
T 61 3 9587 8000 F 61 3 9587 8111
E mel@mail@ghd.com.au W www.ghd.com

DO NOT SCALE

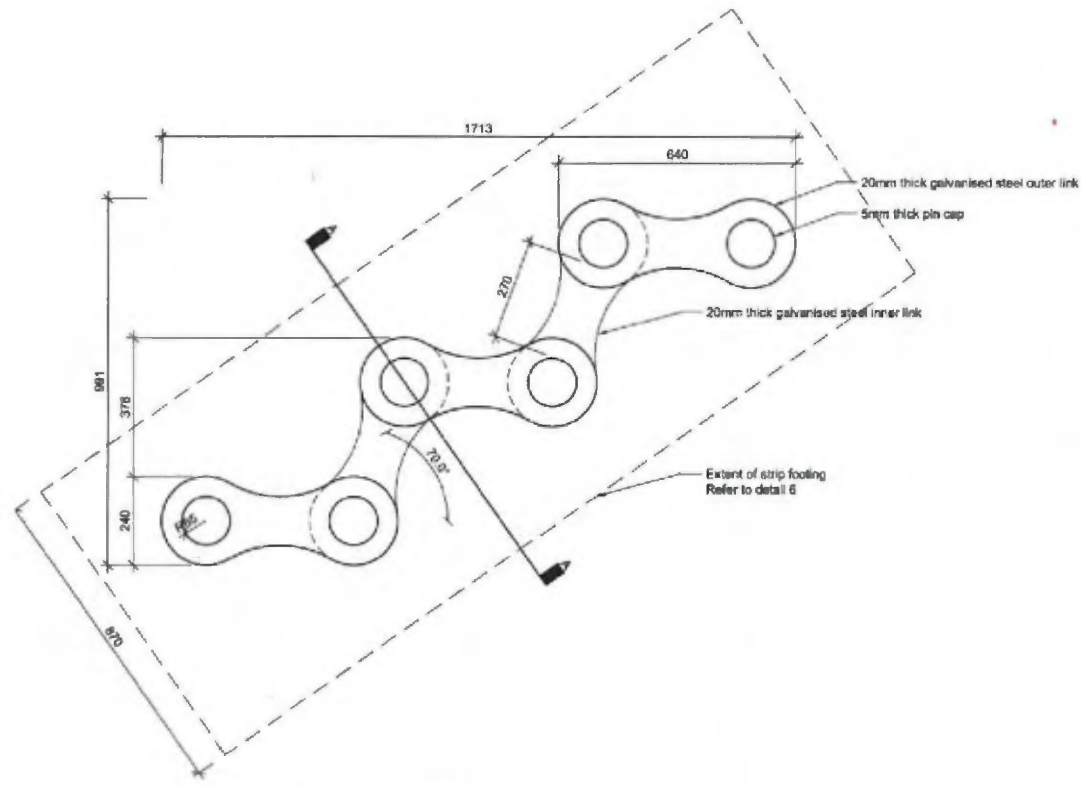
Conditions of Use:
This document may only be used by GHD's client (and any other person who GHD has agreed can use this document) for the purpose for which it was prepared and must not be used by any other person or for any other purpose.

Drawn	K. CLEMENTE	Designer	G. CATER
Drafting Check		Design Check	
Approved (Project Director)		Date	
Scale	AS SHOWN	This Drawing must not be used for Construction unless signed as Approved	

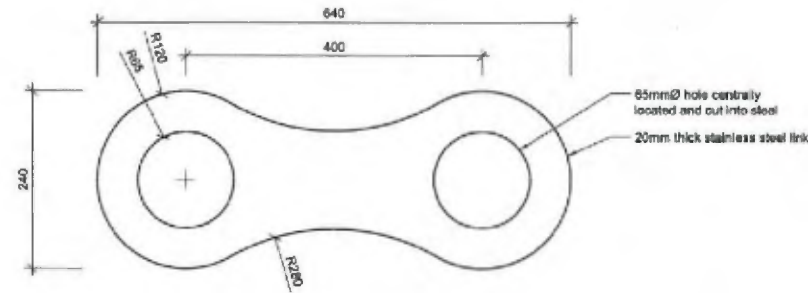
Client VILLAWOOD PROPERTIES
Project ASPIRE DEVELOPMENT
Title STAGE 8 LANDSCAPE DETAILS

Original Size A1 Drawing No: 31-26332-L811

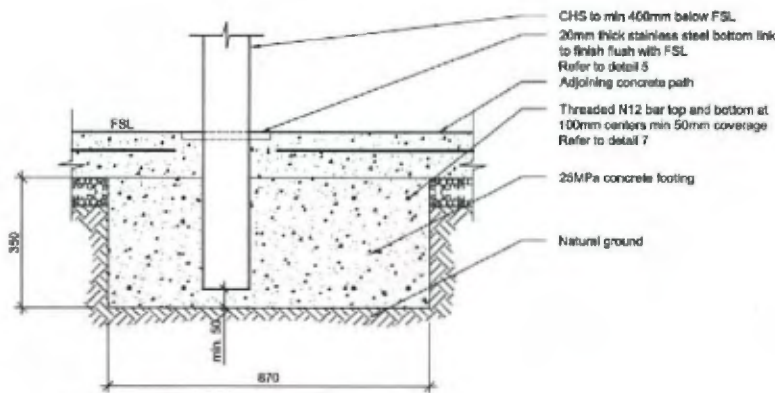
Rev: A



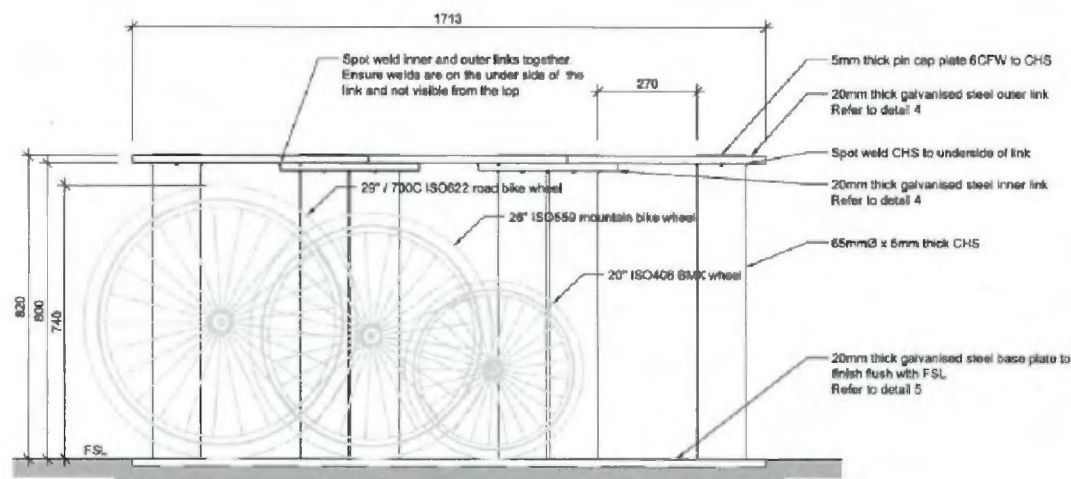
DETAIL 1 BIKE RACK
PLAN
SCALE 1:10



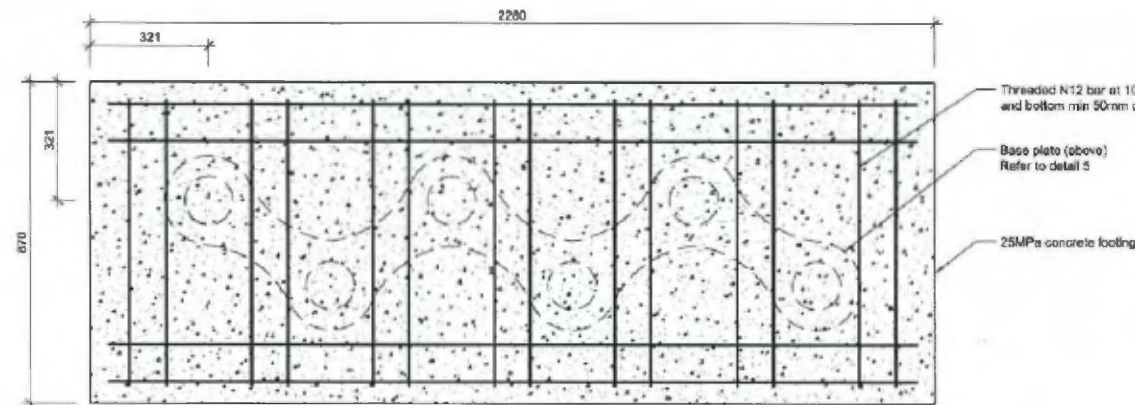
DETAIL 4 INNER & OUTER LINK
PLAN
SCALE 1:5



DETAIL 6 FOOTING
SECTION AA
SCALE 1:10



DETAIL 2 BIKE RACK
SIDE ELEVATION
SCALE 1:10

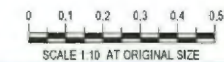


DETAIL 7 FOOTING
PLAN
SCALE 1:10

CITY OF MELTON
LANDSCAPE DEVELOPMENT PLANS
APPROVED
26/03/2014
ENGINEERING SERVICES DATE



WARNING
ALL SERVICES SHOWN ON THIS DRAWING ARE APPROXIMATE ONLY AND EXACT LOCATION IS TO BE CONFIRMED ON SITE BY CONTRACTOR PRIOR TO COMMENCEMENT OF ANY WORKS.



PRELIMINARY

No	Revision	Notes	Drawn	Job Manager	Project Director	Date
A	ISSUED FOR APPROVAL		KC	GC	SG	25.03.14



Level 8, 180 Lonsdale Street, Melbourne VIC 3000 Australia
T 61 3 8687 8000 F 61 3 8687 6111
E melmat@ghd.com.au W www.ghd.com

DO NOT SCALE

Conditions of Use:
This document may only be used by GHD's client (and any other person who GHD has agreed can use this document) for the purpose for which it was prepared and must not be used by any other person or for any other purpose.

Drawn K. CLEMENTE
Drafting Check
Approved (Project Director)
Date
Scale AS SHOWN

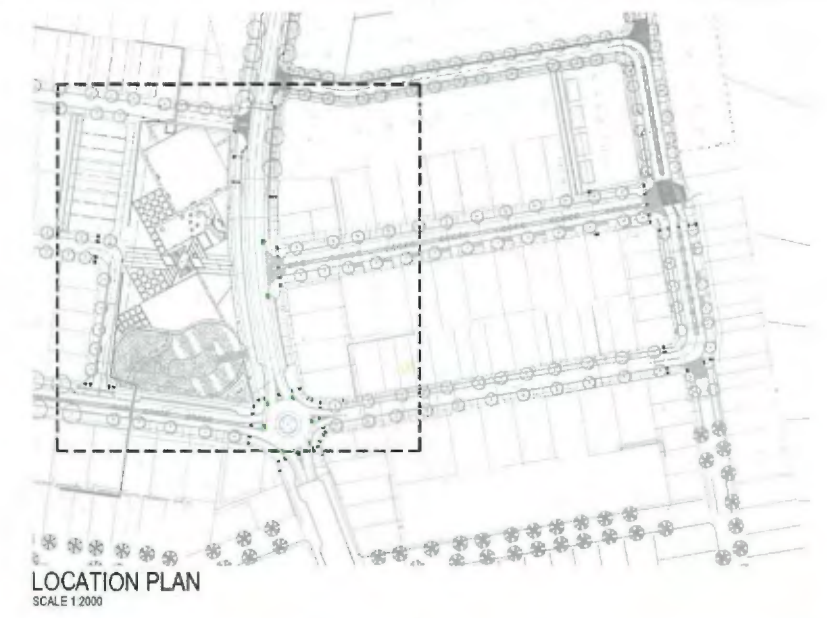
Designer G. CATER
Design Check
This Drawing must not be used for Construction unless signed as Approved

Client VILLAWOOD PROPERTIES
Project ASPIRE DEVELOPMENT
Title STAGE 8 BIKE RACK DETAILS

Original Size A1 Drawing No: 31-26332-L812

Rev: A

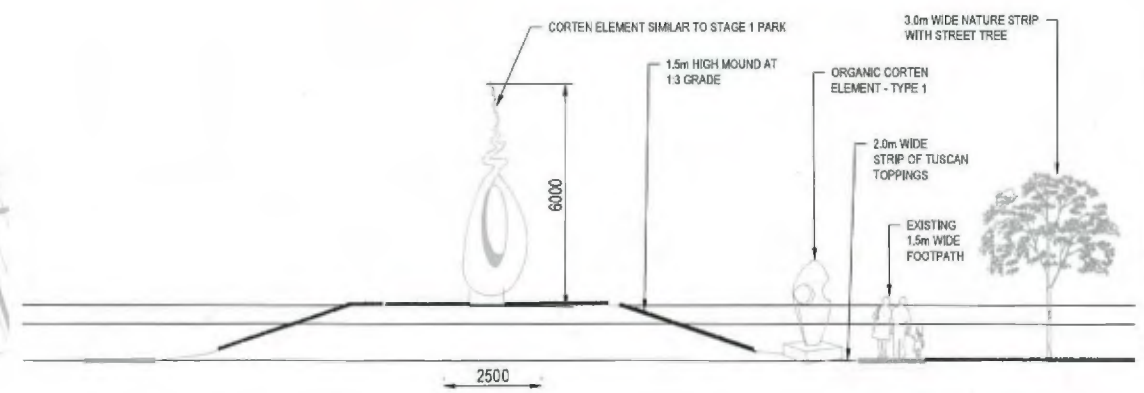
747



TYPE 1 - ORGANIC CORTEN GARDEN ELEMENT AT ASPIRE SALES CENTRE



CORTEN GARDEN ELEMENT TO BE THE FOCAL POINT ON CORNER OF KENNEDY AND ASPIRE BOULEVARD. TO BE A SIMILAR FORM TO THE ONE IN STAGE 1.



SECTION A SCALE 1:100

CITY OF MELTON
 LANDSCAPE DEVELOPMENT PLANS
APPROVED
 26/03/2014
 ENGINEERING SERVICES DATE



WARNING
 ALL SERVICES SHOWN ON THIS DRAWING ARE APPROXIMATE ONLY AND EXACT LOCATION IS TO BE CONFIRMED ON SITE BY CONTRACTOR PRIOR TO COMMENCEMENT OF ANY WORKS.

PRELIMINARY

A ISSUED FOR APPROVAL		KC	GC	SG	25.03.14
No	Revision	Date		Indicates signatures on original issue of drawing or last revision of drawing	
Drawn	Job Manager	Project Director	Date		



Level 8, 180 Lonsdale Street, Melbourne VIC 3000 Australia
 T 61 3 9687 8200 F 61 3 9687 8111
 E melm@ghd.com.au W www.ghd.com

DO NOT SCALE

Conditions of Use.
 This document may only be used by GHD's client (and any other person who GHD has agreed can use this document) for the purpose for which it was prepared and must not be used by any other person or for any other purpose.

Drawn K. CLEMENTE
 Drafting Check
 Approved (Project Director)
 Date
 Scale AS SHOWN

Designer G. CATER
 Design Check
 This Drawing must not be used for construction unless signed as Approved

Client **VILLAWOOD PROPERTIES**
 Project **ASPIRE DEVELOPMENT**
 Title **STAGE 8 - GENERAL ARRANGEMENT AND DETAIL SCULPTURE**
 Original Size **A1**
 Drawing No: **31-26332-L813**
 Rev: **A**