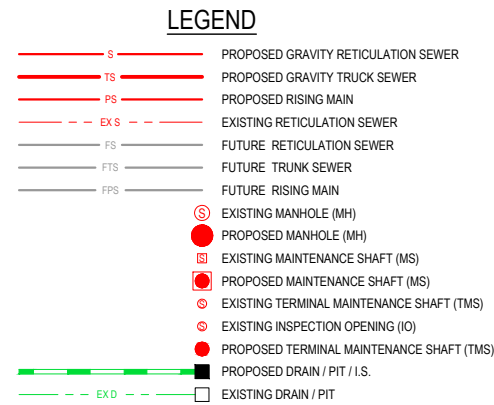
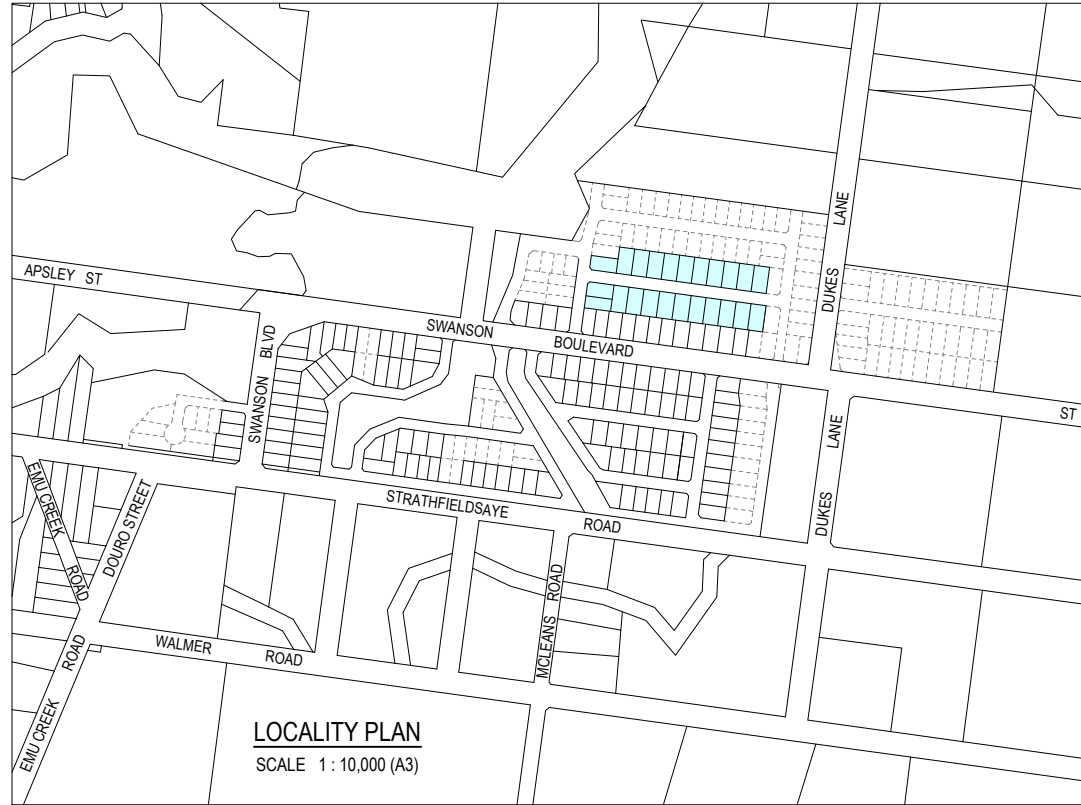


"IMAGINE" ESTATE - STAGE 6 RETICULATION SEWER PLANS

JUMBUCK LANE - STRATHFIELDSAYE



GENERAL NOTES

GENERAL

1. ALL LEVELS ARE IN METRES TO AUSTRALIAN HEIGHT DATUM (A.H.D)
2. SEWER MAINS WILL BE INSTALLED IN ACCORDANCE WITH THE SEWERAGE CODE OF AUSTRALIA (WSA 02-2002-2.3, MELBOURNE RETAIL WATER AGENCIES EDITION, VERSION 1.0) AND ASSOCIATED COLIBAN WATER ADDENDUM.
3. NUMBER OF LOTS SERVICED : 26
4. LENGTH OF PIPELINE TO BE CONSTRUCTED
1500 PVC (CLASS SN8) = 389Lm
2250 PVC (CLASS SN8) = 125Lm
3000 PVC (CLASS SN8) = 25Lm
5. NOTE TO CONTRACTOR - THE CONSULTING ENGINEER IS RESPONSIBLE FOR THE DESIGN AND MANAGEMENT OF THE CONSTRUCTION WORKS. ANY PROBLEMS ARISING DURING CONSTRUCTION SHALL BE DIRECTED TO THE CONSULTANT.
6. NO TBM CAN BE USED WITHOUT FIRST PROVING IT TO BE CORRECT TO A SECOND TBM. TOMKINSON IS TO BE NOTIFIED OF ANY DISCREPANCIES IMMEDIATELY. NO HORIZONTAL SETOUT CONTROL CAN BE USED WITHOUT FIRST PROVING IT TO BE CORRECT TO A THIRD KNOWN POINT. TOMKINSON GROUP IS TO BE NOTIFIED OF ANY DISCREPANCIES IMMEDIATELY. TITLE PEGS AND T.B.M.'s TO BE RE-ESTABLISHED BY A LICENSED SURVEYOR IF FOUND TO BE MISSING.

PIPELINE CONSTRUCTION

7. PIPELINE CONSTRUCTION IS TO BE WITH THE FOLLOWING MATERIALS UNLESS OTHERWISE DETAILED ON THE DRAWINGS
PIPE TYPE: PVC
PIPE CLASS: SN8 (1500 & GREATER) - SN6 (1000)
AUSTRALIAN STANDARD: AS 1260

PIPE JOINTING

8. SOLVENT CEMENT WELDED OR RUBBER JOINTS ARE TO BE USED

PROPERTY BRANCH SEWERS

9. ALL PROPERTIES ARE BOUNDARY TRAP OMITTED

ACCESS CHAMBERS

10. ALL CHAMBERS SHALL BE 1000mm DIA UNLESS SHOWN OTHERWISE
9. PRECAST RUBBER RING OR MASTIC JOINTED ACCESS CHAMBER SYSTEMS ARE TO BE USED. PVC MANHOLES NOT TO BE USED.

CHAMBER COVERS

10. ALL ACCESS CHAMBER COVERS SHALL BE CIRCULAR DUCTILE IRON SOLID DN600 COVERS THAT COMPLY WITH AS3996 AND WSA 104 UNLESS OTHERWISE SPECIFIED, WITH NOMINAL 600mm OPENING - CLASS 'D' IN ROAD RESERVES AND ALONG PROPERTY FRONTAGES

11. ALL CHAMBER COVERS SHALL BE LEVEL WITH AND SHALL CONFORM TO SLOPE AND CROSSFALL OF THE FINISHED SURFACE. THE FINISHED SURFACE LEVELS ARE TO BE CONFIRMED WITH THE SUPERINTENDENT AND ROAD CONTRACTOR PRIOR TO CONSTRUCTION.

OUTLET

12. THESE BRANCHES DRAIN DIRECTLY TO EXISTING SEWERS.

EARTHWORKS

13. IN AREAS SUBJECT TO EARTHWORKS, THE CONSTRUCTION OF SEWERS MUST NOT COMMENCE UNTIL THE EARTHWORKS HAVE BEEN COMPLETED OR THE SUPERINTENDENT GIVES WRITTEN NOTICE TO COMMENCE.

SERVICE CONNECTIONS

14. ALL NEW SERVICE CONNECTIONS MUST BE IN ACCORDANCE WITH THE REQUIREMENTS OF COLIBAN WATER SPECIFICATIONS

REINSTATEMENT OF DISTURBED AREAS

15. ON COMPLETION OF SEWER WORKS, THE CONTRACTOR MUST REINSTATE TO THE SATISFACTION OF THE SUPERINTENDENT AND TO THE RESPONSIBLE AUTHORITY ANY AREAS, STRUCTURES, PAVEMENTS OR SERVICES DAMAGED, DIRTIED OR MADE UNSERVICEABLE DUE TO CONSTRUCTION WORKS.

CONNECTION TO LIVE SEWER

16. NO CONNECTION TO EXISTING AUTHORITY SERVICES WILL BE PERMITTED WITHOUT ATTENDANCE BY THE AUTHORITY PERSONNEL AND WITH COLIBAN WATER PERSONNEL BEING PROVIDED WITH A MINIMUM OF FIVE (5) DAYS PRIOR WRITTEN NOTIFICATION DUE TO CONSTRUCTION WORKS.

SERVICES

17. THE CONTRACTOR MUST CONTACT DIAL BEFORE YOU DIG (CALL 1100), OR VISIT THE DIAL BEFORE YOU DIG WEBSITE PRIOR TO COMMENCING WORKS AND SATISFY THEMSELVES THAT THERE ARE NO SERVICES WITHIN THE VICINITY OF THE WORK AREA
18. NO WORK IS TO COMMENCE BEFORE THE CONTRACTOR HAS ASCERTAINED WHAT UNDERGROUND SERVICES ARE PRESENT
19. CONTRACTOR MUST FOLLOW THE "NO GO ZONE" SAFETY PROCEDURES AT ALL TIMES, WHICH ARE AVAILABLE FROM ALL UTILITY AND TELECOMMUNICATIONS COMPANIES, INCLUDING THE OFFICE OF THE CHIEF ELECTRICAL INSPECTOR, THE OFFICE OF GAS SAFETY AND WORKSAFE VICTORIA
20. IF THESE SAFETY PROCEDURES CANNOT BE COMPLIED WITH THEN NO WORK IS TO BE UNDERTAKEN WITHOUT PERMISSION FROM THE UTILITY COMPANY
21. THE PROJECT AREA CONTAINS THE FOLLOWING SERVICES FOR ASSISTANCE IN EMERGENCY CONTACT.

SERVICES	AUTHORITY & CONTACT	TELEPHONE
DRAINAGE	CITY OF GREATER BENDIGO	5434 6000
ELECTRICITY	POWERCOR	132 412
GAS	SP AUSNET	136 707
COMMUNICATIONS	TELSTRA	132 203
SEWER & WATER	COLIBAN WATER	1300 363 200

TABLE OF OFFSETS FOR SERVICES

STREET	GAS		WATER		ELECTRICITY				TELSTRA	
	OFFSET	SIDE	OFFSET	SIDE	POLE		U/G CABLE		OFFSET	SIDE
					OFFSET	SIDE	OFFSET	SIDE		
TERRAPEE STREET	1.9m	SOUTH	2.3m	SOUTH	-	-	2.4m	NORTH	1.9m	NORTH
JUMBUCK LANE	1.9m	EAST	2.3m	EAST	-	-	2.4m	WEST	1.9m	WEST
KARNDELI PROMENADE	1.9m	STHVEST	2.3m	STHVEST	-	-	1.2/5.2m	NTH/WST	0.7/4.7m	NTH/WST
TARRNOOK DRIVE	1.9m	NORTH	2.3m	NORTH	-	-	2.4m	SOUTH	1.9m	SOUTH
SWANSON BOULEVARD (WEST OF COOMOORA)	1.9/2.9m	STHVEST	2.3/3.3m	STHVEST	-	-	1.3/2.3m	STHVEST	0.9/1.9m	STHVEST
SWANSON BOULEVARD (COOMOORA "BLOCK")	5.9m	SOUTH	6.4m	SOUTH	-	-	4.9m	SOUTH	4.4m	SOUTH
SWANSON BOULEVARD (EAST OF YIRRILLIL WAY)	0.9m	NORTH	1.3m	NORTH	-	-	1.3/3.5m	SOUTH	0.9/3.0m	SOUTH

DRAWING LIST

SEWER CONSTRUCTION PLANS

- 1065306S01 LOCALITY PLAN & GENERAL NOTES
- 1065306S02 RETICULATION SEWER DETAIL PLAN
- 1065306S03-S08 RETICULATION SEWER LONG SECTIONS (6 SHEETS)

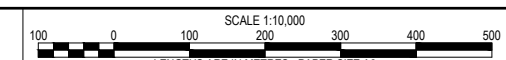
CONCEPT PLAN

© COPYRIGHT. THE INFORMATION CONTAINED ON THIS DRAWING IS THE INTELLECTUAL PROPERTY OF TOMKINSON GROUP. COPYING OR USING THIS DRAWING IN WHOLE OR IN PART WITHOUT THE EXPRESS WRITTEN PERMISSION OF TOMKINSON GROUP INFRINGES COPYRIGHT

REV	DESCRIPTION	DES	DWG	CHK	DATE
A	AS SUBMITTED TO CLIENT & AQUATEC	NJB	NJB	RK	15/01/16

tomkinson Group
 PROJECT MANAGERS DEVELOPMENT PLANNERS
 LICENSED SURVEYORS CIVIL ENGINEERS
 FREECALL: 1800 810 170 TEL: (03) 5445 8700 FAX: (03) 5441 3648
 PO BOX 421, BENDIGO 3552 57 MYERS STREET, BENDIGO 3550
 WEB: www.tomkinson.com EMAIL: bendigo@tomkinson.com

Principal STRATHFIELDSAYE HOLDINGS PTY LTD



"IMAGINE" ESTATE - STAGE 6
 JUMBUCK LANE - STRATHFIELDSAYE
 LOCALITY PLAN & GENERAL NOTES

Water Authority & Ref:
 COLIBAN WATER
 ME - TBA

SHT No of 8 REV A

Drawing No.
 1065306S01

NOTE: THIS PLAN IS AN UNCONTROLLED DOCUMENT AND WILL NOT BE UPDATED. IT IS THE RESPONSIBILITY OF THE USER TO CONFIRM THAT THIS IS A CURRENT COPY AND SUITABLE FOR THE PROPOSED USE. THIS SHEET MUST BE READ IN CONJUNCTION WITH ALL SHEETS OF THIS SET AND ANY ACCOMPANYING DOCUMENTS. PLOT DATE: 15/01/2016 FILE: P:\JOB DATA\1065306\1065306-STRATHFIELDSAYE HOLDINGS-STRATHFIELDSAYE HOLDINGS-CIVIL3D\CURRENT DESIGN\1065306 ENG PLANS.DWG



CONCEPT PLAN

REV	REVISION	DES	DWG	CHK	DATE
A	AS SUBMITTED TO CLIENT & AQUATEC	NB	NB	RR	15/01/16

Tomkinson Group
 PROJECT MANAGERS DEVELOPMENT PLANNERS
 LICENSED SURVEYORS CIVIL ENGINEERS
 FREECALL: 1800 810 170 TEL: (03) 5445 8700 FAX: (03) 5441 3648
 PO BOX 421, BENDIGO 3552 57 MYERS STREET, BENDIGO 3550
 WEB: www.tomkinson.com EMAIL: bendigo@tomkinson.com

Principal STRATHFIELDSAYE HOLDINGS
 PTY LTD

SCALE: 1:1000
 LENGTHS ARE IN METRES - PAPER SIZE A3

"IMAGINE" ESTATE - STAGE 6
 JUMBUCK LANE - STRATHFIELDSAYE
 RETICULATED SEWER DETAIL PLAN

Water Authority & Ref:
 COLIBAN
 WATER
 ME - TBA

SHT 2 of 8 REV A
 Drawing No.
 1065306S02

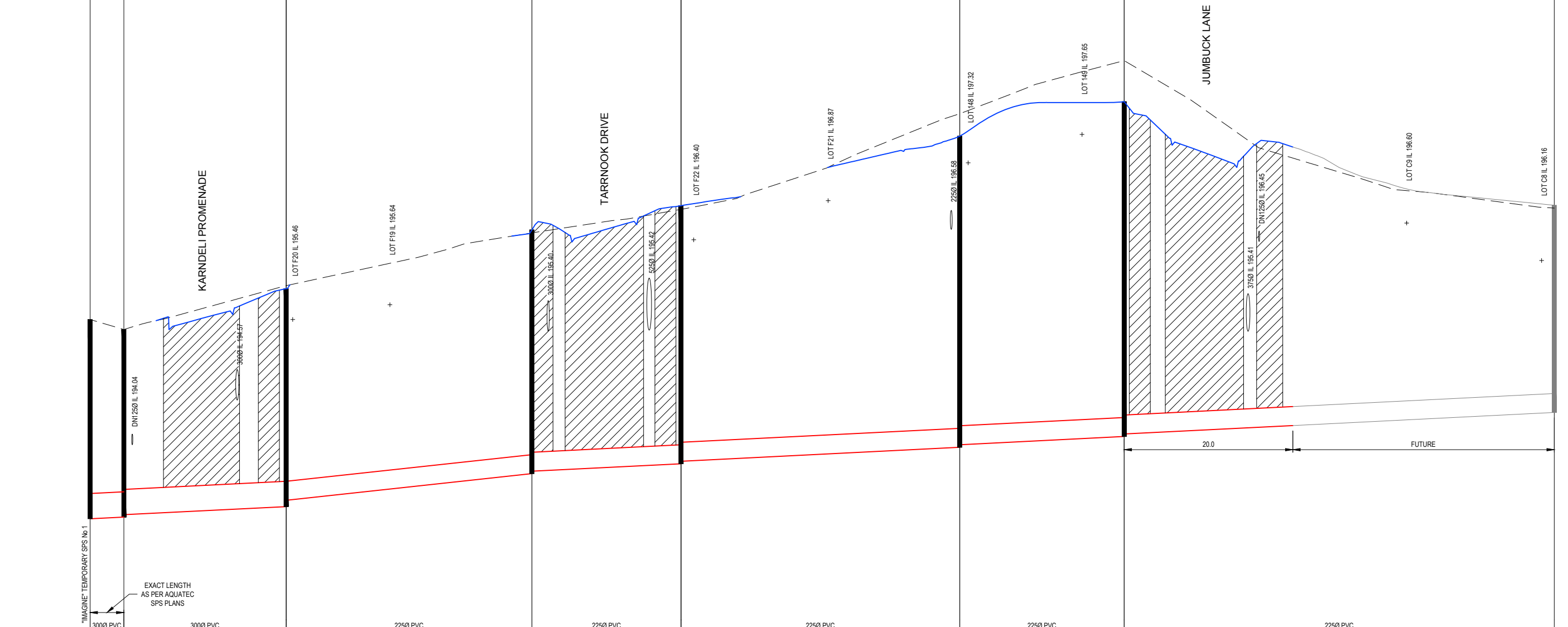
NOTE: THIS PLAN IS AN UNCONTROLLED DOCUMENT AND WILL NOT BE UPDATED. IT IS THE RESPONSIBILITY OF THE USER TO CONFIRM THAT THIS IS CURRENT COPY AND SUITABLE FOR THE PROPOSED USE. THIS SHEET MUST BE READ IN CONJUNCTION WITH ALL SHEETS OF THIS SET AND ANY ACCOMPANYING DOCUMENTS. PLO DATE: 15/01/2016 FILE: P:\JOB DATA\1065306S02\1065306S02\1065306S02\1065306S02.DWG

SPS MH30I MH30J MH30K MH30L MH30M MH30N MH30O

NOTE:



DENOTES 3% CEMENT
STABILISED FULL DEPTH
FCR BACKFILL
REFER STANDARD NOTES



DATUM RL 191.5	3000 PVC 1:200 (0.50%)	3000 PVC 1:200.5 (0.50%)	2250 PVC 1:92.2 (1.08%)	2250 PVC 1:200.0 (0.50%)	2250 PVC 1:200.0 (0.50%)	2250 PVC 1:200.0 (0.50%)	2250 PVC 1:200.0 (0.50%)
DEPTH TO INVERT	2.36 2.22	2.19	2.58 2.51	2.89 2.86	3.06 3.03	3.69 3.66	3.97 3.94
INVERT LEVEL	193.15 193.17	193.20	193.29 193.37	193.68 193.71	193.80 193.83	194.00 194.03	194.12 194.15
DESIGN SURFACE	195.51 195.39		195.88	196.57	196.86	197.68	198.09
CHAINAGE	0.00 4.00		19.25	23.25	29.14	52.39	70.07

CONCEPT PLAN

© COPYRIGHT. THE INFORMATION CONTAINED ON THIS DRAWING IS THE INTELLECTUAL PROPERTY OF TOMKINSON GROUP. COPYING OR USING THIS DRAWING IN WHOLE OR IN PART WITHOUT THE EXPRESS WRITTEN PERMISSION OF TOMKINSON GROUP INFRINGES COPYRIGHT

AS SUBMITTED TO CLIENT & AQUATEC	NJB	NJB	RK	15/01/16
REVISION	DES	DWG	CHK	DATE

tomkinson Group
 PROJECT MANAGERS DEVELOPMENT PLANNERS
 LICENSED SURVEYORS CIVIL ENGINEERS
 FREECALL: 1800 810 170 TEL: (03) 5445 8700 FAX: (03) 5441 3648
 PO BOX 421, BENDIGO 3552 57 MYERS STREET, BENDIGO 3550
 WEB: www.tomkinson.com EMAIL: bendigo@tomkinson.com

Principal STRATHFIELDSAYE HOLDINGS
PTY LTD

SCALE H 1:500 V 1:50
 LENGTHS ARE IN METRES - PAPER SIZE A3

"IMAGINE" ESTATE - STAGE 6
 JUMBUCK LANE - STRATHFIELDSAYE
 RETICULATION SEWER LONG SECTIONS (SHEET 2 OF 6)

Water Authority & Ref:
COLIBAN
WATER
ME - TBA

SHT 4 of 8 REV A

Drawing No.
1065306S04

NOTE: THIS PLAN IS AN UNCONTROLLED DOCUMENT AND WILL NOT BE UPDATED. IT IS THE RESPONSIBILITY OF THE USER TO CONFIRM THAT THIS IS A CURRENT COPY AND SUITABLE FOR THE PROPOSED USE. THIS SHEET MUST BE READ IN CONJUNCTION WITH ALL SHEETS OF THIS SET AND ANY ACCOMPANYING DOCUMENTS. PLOJ DATE: 15/01/2016 FILE: P:\JOB DATA\1065306S04\STRATHFIELDSAYE\BENENGINEERING\CIVIL\CURRENT DESIGN\1065306 ENG PLANS.DWG

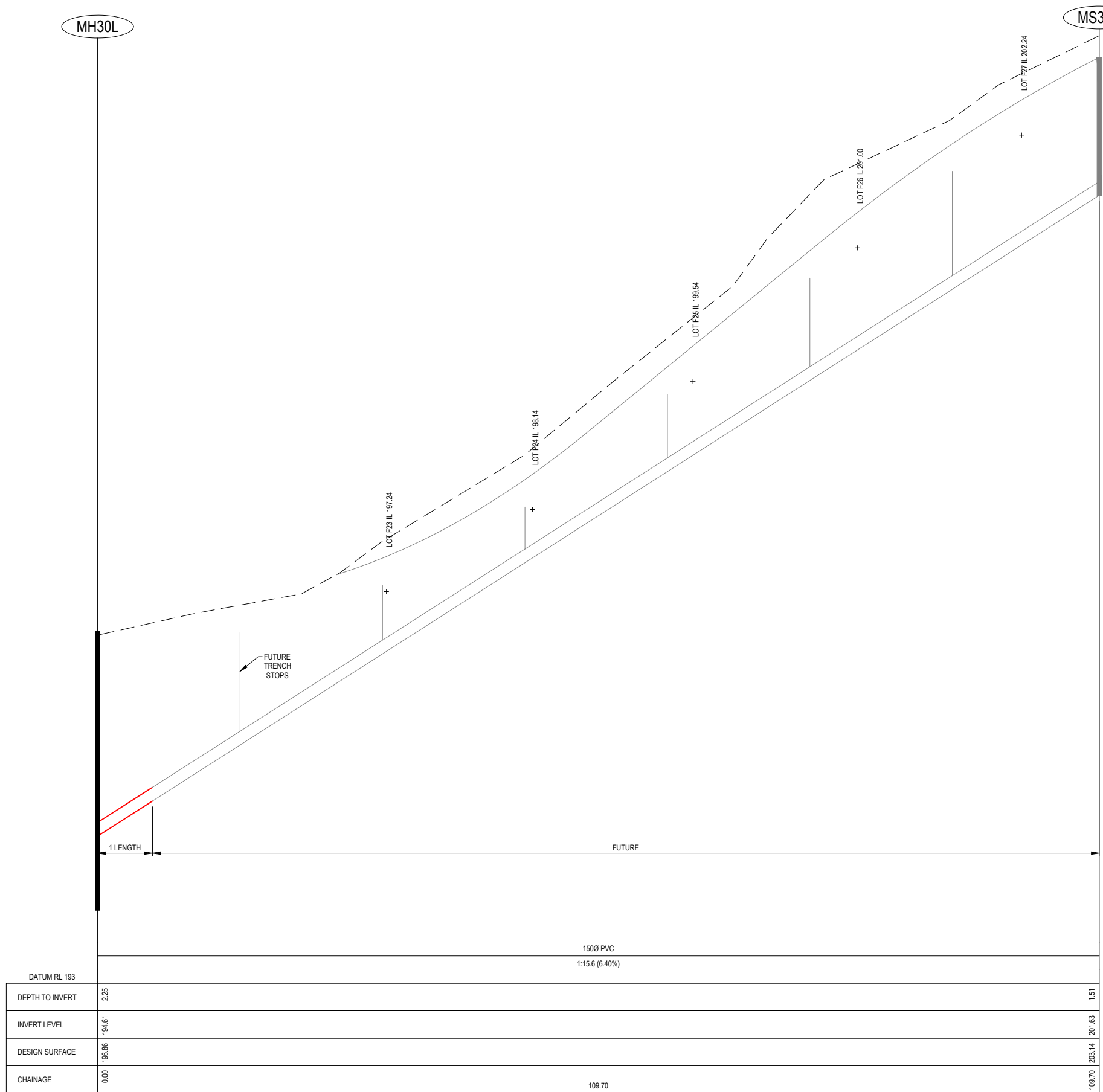
MH30L

MS31A

NOTE:



DENOTES 3% CEMENT STABILISED FULL DEPTH FCR BACKFILL REFER STANDARD NOTES



DATUM RL 193		1500 PVC		1:15.6 (6.40%)	
DEPTH TO INVERT	2.25				1.51
INVERT LEVEL	194.61				201.63
DESIGN SURFACE	196.86				203.14
CHAINAGE	0.00			109.70	203.14

CONCEPT PLAN

© COPYRIGHT. THE INFORMATION CONTAINED ON THIS DRAWING IS THE INTELLECTUAL PROPERTY OF TOMKINSON GROUP. COPYING OR USING THIS DRAWING IN WHOLE OR IN PART WITHOUT THE EXPRESS WRITTEN PERMISSION OF TOMKINSON GROUP INFRINGES COPYRIGHT

REV	DESCRIPTION	DES	DWG	CHK	DATE
A	AS SUBMITTED TO CLIENT & AQUATEC	NJB	NJB	RK	15/01/16

Tomkinson Group
 PROJECT MANAGERS DEVELOPMENT PLANNERS ISO 9001:2008
 LICENSED SURVEYORS CIVIL ENGINEERS FS520488
 FREECALL: 1800 810 170 TEL: (03) 5445 8700 FAX: (03) 5441 3648
 PO BOX 421, BENDIGO 3552 57 MYERS STREET, BENDIGO 3550
 WEB: www.tomkinson.com EMAIL: bendigo@tomkinson.com

Principal STRATHFIELDSAYE HOLDINGS PTY LTD



"IMAGINE" ESTATE - STAGE 6
JUMBUCK LANE - STRATHFIELDSAYE
RETICULATION SEWER LONG SECTIONS (SHEET 3 OF 6)

Water Authority & Ref: COLIBAN WATER ME - TBA
SHT 5 of 8 REV A
Drawing No. 1065306S05

NOTE: THIS PLAN IS AN UNCONTROLLED DOCUMENT AND WILL NOT BE UPDATED. IT IS THE RESPONSIBILITY OF THE USER TO CONFIRM THAT THIS IS A CURRENT COPY AND SUITABLE FOR THE PROPOSED USE. THIS SHEET MUST BE READ IN CONJUNCTION WITH ALL SHEETS OF THIS SET AND ANY ACCOMPANYING DOCUMENTS. PLO DATE: 15/01/2016 FILE: F:\JOB DATA\1065306S05\STRATHFIELDSAYE\BENENGINEERING\CIVIL\CURRENT DESIGN\1065306 ENG PLANS.DWG

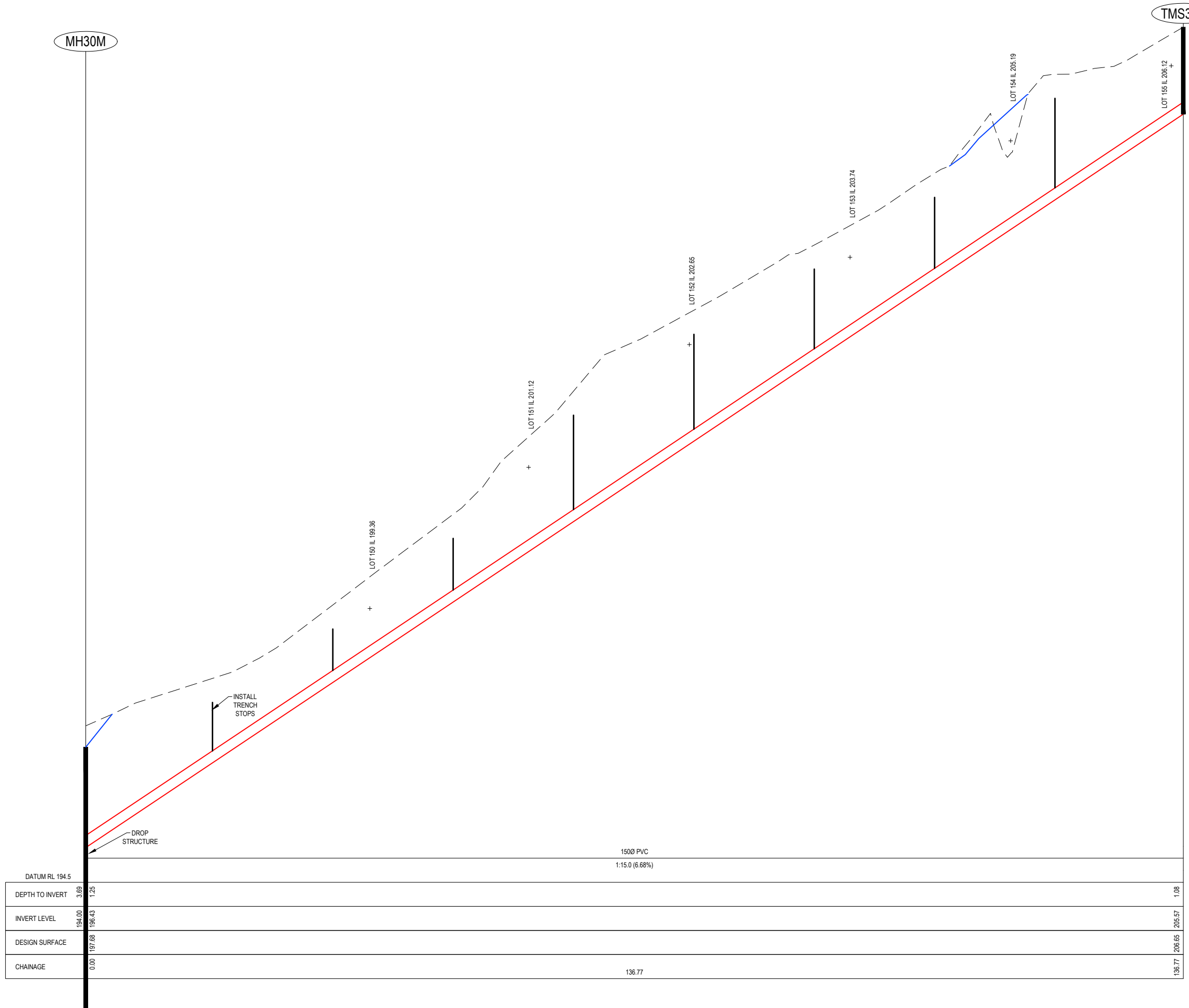
MH30M

TMS32A

NOTE:



DENOTES 3% CEMENT STABILISED FULL DEPTH FCR BACKFILL REFER STANDARD NOTES



DATUM RL	194.5		
DEPTH TO INVERT	3.69	1.25	1.08
INVERT LEVEL	194.00	196.43	205.57
DESIGN SURFACE	197.68	206.65	206.65
CHAINAGE	0.00		136.77

CONCEPT PLAN

© COPYRIGHT. THE INFORMATION CONTAINED ON THIS DRAWING IS THE INTELLECTUAL PROPERTY OF TOMKINSON GROUP. COPYING OR USING THIS DRAWING IN WHOLE OR IN PART WITHOUT THE EXPRESS WRITTEN PERMISSION OF TOMKINSON GROUP INFRINGES COPYRIGHT

REV	REVISION	DES	DWG	CHK	DATE
A	AS SUBMITTED TO CLIENT & AQUATEC	NJB	NJB	RK	15/01/16

Tomkinson Group
 PROJECT MANAGERS DEVELOPMENT PLANNERS ISO 9001:2008
 LICENSED SURVEYORS CIVIL ENGINEERS FS520488
 FREECALL: 1800 810 170 TEL: (03) 5445 8700 FAX: (03) 5441 3648
 PO BOX 421, BENDIGO 3552 57 MYERS STREET, BENDIGO 3550
 WEB: www.tomkinson.com EMAIL: bendigo@tomkinson.com

Principal STRATHFIELDSAYE HOLDINGS PTY LTD



"IMAGINE" ESTATE - STAGE 6
JUMBUCK LANE - STRATHFIELDSAYE
RETICULATION SEWER LONG SECTIONS (SHEET 4 OF 6)

Water Authority & Ref:
COLIBAN
WATER
ME - TBA
SHT 6 of 8 REV A
Drawing No.
1065306S06

NOTE: THIS PLAN IS AN UNCONTROLLED DOCUMENT AND WILL NOT BE UPDATED. IT IS THE RESPONSIBILITY OF THE USER TO CONFIRM THAT THIS IS A CURRENT COPY AND SUITABLE FOR THE PROPOSED USE. THIS SHEET MUST BE READ IN CONJUNCTION WITH ALL SHEETS OF THIS SET AND ANY ACCOMPANYING DOCUMENTS. PLO DATE: 15/01/2016 FILE: P:\JOB DATA\1065306S\1065306S\STRATHFIELDSAYE\BENENGINEERING\CIVIL\CURRENT DESIGN\1065306 ENG PLANS.DWG

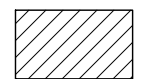
MS32A

MH32B MH30N

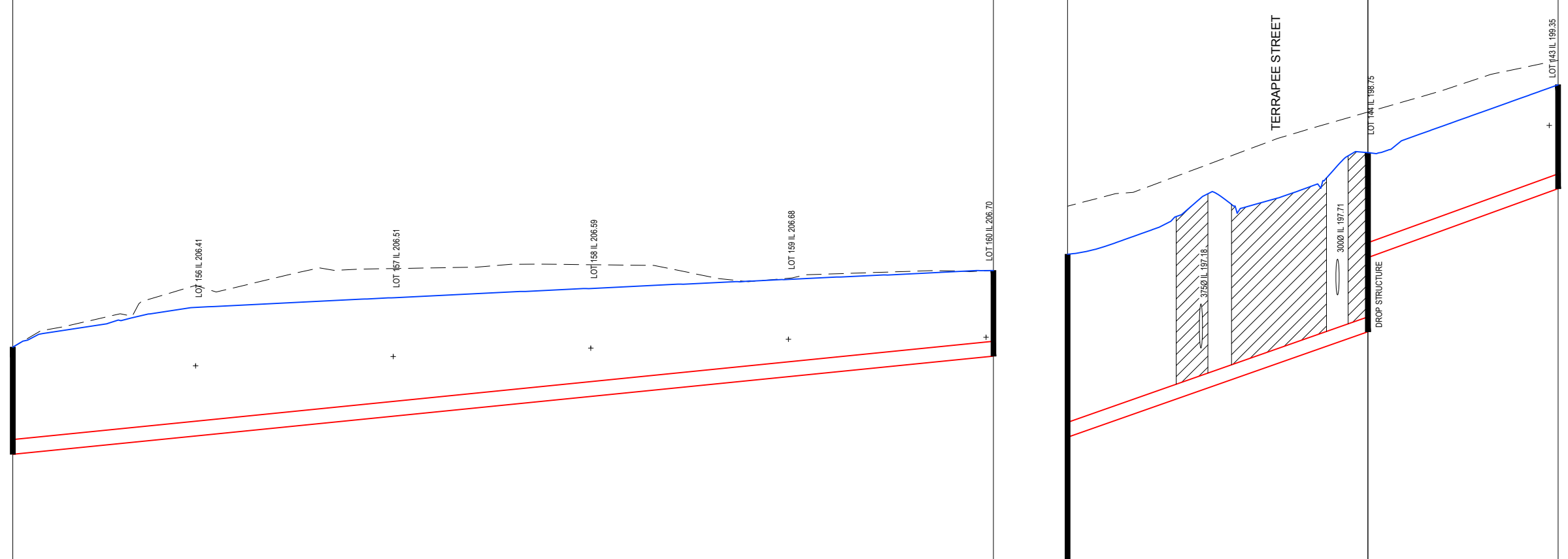
MH33A

MH33B

NOTE:



DENOTES 3% CEMENT STABILISED FULL DEPTH FCR BACKFILL REFER STANDARD NOTES



DATUM RL 204		1500 PVC		1500 PVC	
		1.99.9 (1.00%)		1.27.6 (3.62%)	
DEPTH TO INVERT	1.08			0.87	
INVERT LEVEL	205.57			206.56	
DESIGN SURFACE	206.66			207.43	
CHAINAGE	136.77	99.25		236.02	

CONCEPT PLAN

© COPYRIGHT. THE INFORMATION CONTAINED ON THIS DRAWING IS THE INTELLECTUAL PROPERTY OF TOMKINSON GROUP. COPYING OR USING THIS DRAWING IN WHOLE OR IN PART WITHOUT THE EXPRESS WRITTEN PERMISSION OF TOMKINSON GROUP INFRINGES COPYRIGHT

REV	AS SUBMITTED TO CLIENT & AQUATEC	NJB	NJB	RK	15/01/16
DES	DWG	CHK	DATE		

tomkinson Group
 PROJECT MANAGERS DEVELOPMENT PLANNERS ISO 9001:2008
 LICENSED SURVEYORS CIVIL ENGINEERS FS520488
 FREECALL: 1800 810 170 TEL: (03) 5445 8700 FAX: (03) 5441 3648
 PO BOX 421, BENDIGO 3552 57 MYERS STREET, BENDIGO 3550
 WEB: www.tomkinson.com EMAIL: bendigo@tomkinson.com

Principal STRATHFIELDSAYE HOLDINGS PTY LTD



"IMAGINE" ESTATE - STAGE 6
JUMBUCK LANE - STRATHFIELDSAYE
RETICULATION SEWER LONG SECTIONS (SHEET 5 OF 6)

Water Authority & Ref:
COLIBAN WATER ME - TBA
SHT 7 of 8 REV A
Drawing No. 1065306S07

NOTE: THIS PLAN IS AN UNCONTROLLED DOCUMENT AND WILL NOT BE UPDATED. IT IS THE RESPONSIBILITY OF THE USER TO CONFIRM THAT THIS IS A CURRENT COPY AND SUITABLE FOR THE PROPOSED USE. THIS SHEET MUST BE READ IN CONJUNCTION WITH ALL SHEETS OF THIS SET AND ANY ACCOMPANYING DOCUMENTS. PLO DATE: 15/01/2016 FILE: P:\JOB DATA\1065306S07\1065306S07\STRATHFIELDSAYE\BENGINENGIN\3\DISCURRENT DESIGN\1065306 ENG PLANS.DWG

NOTE:

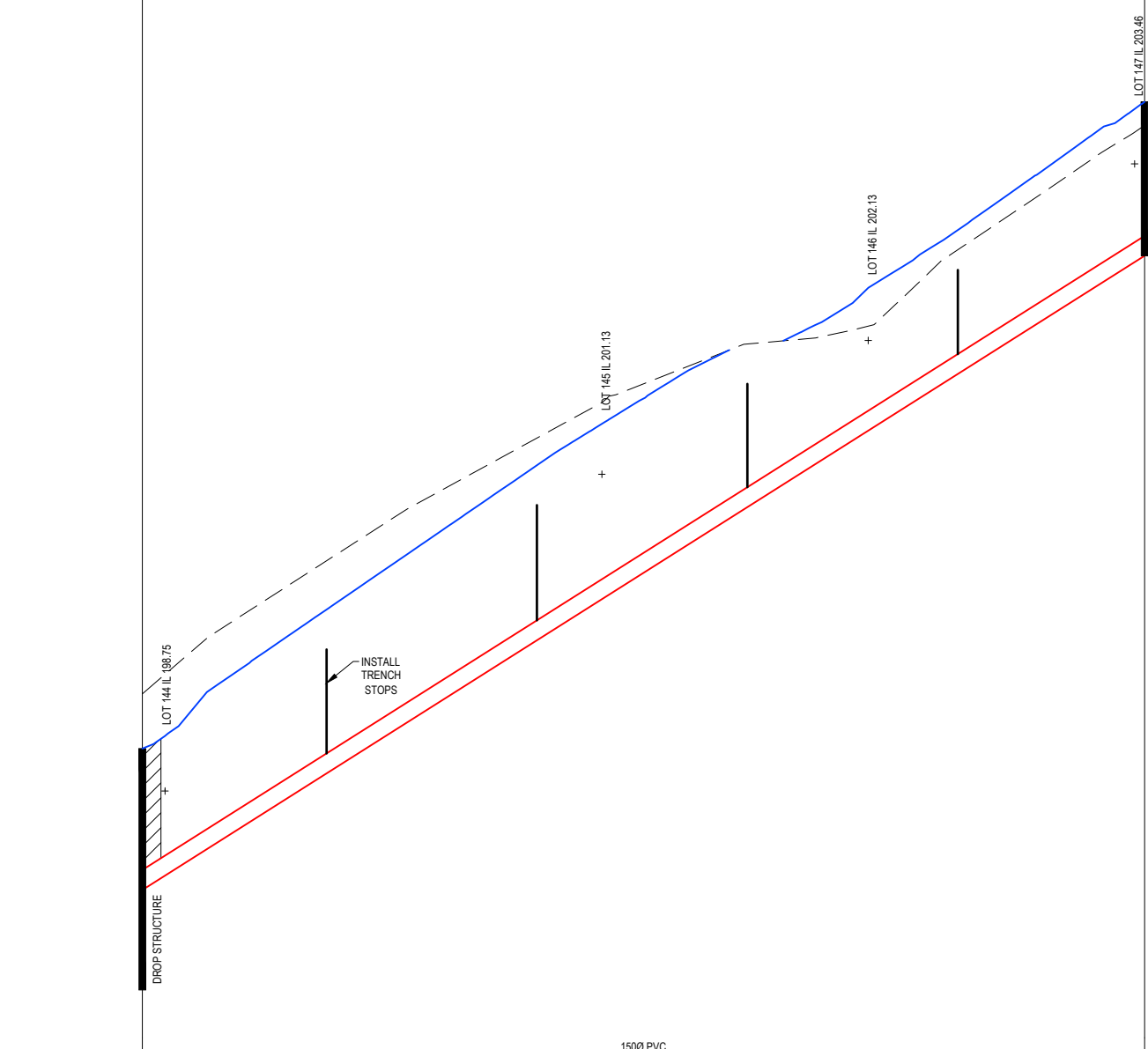


DENOTES 3% CEMENT
STABILISED FULL DEPTH
FCR BACKFILL
REFER STANDARD NOTES

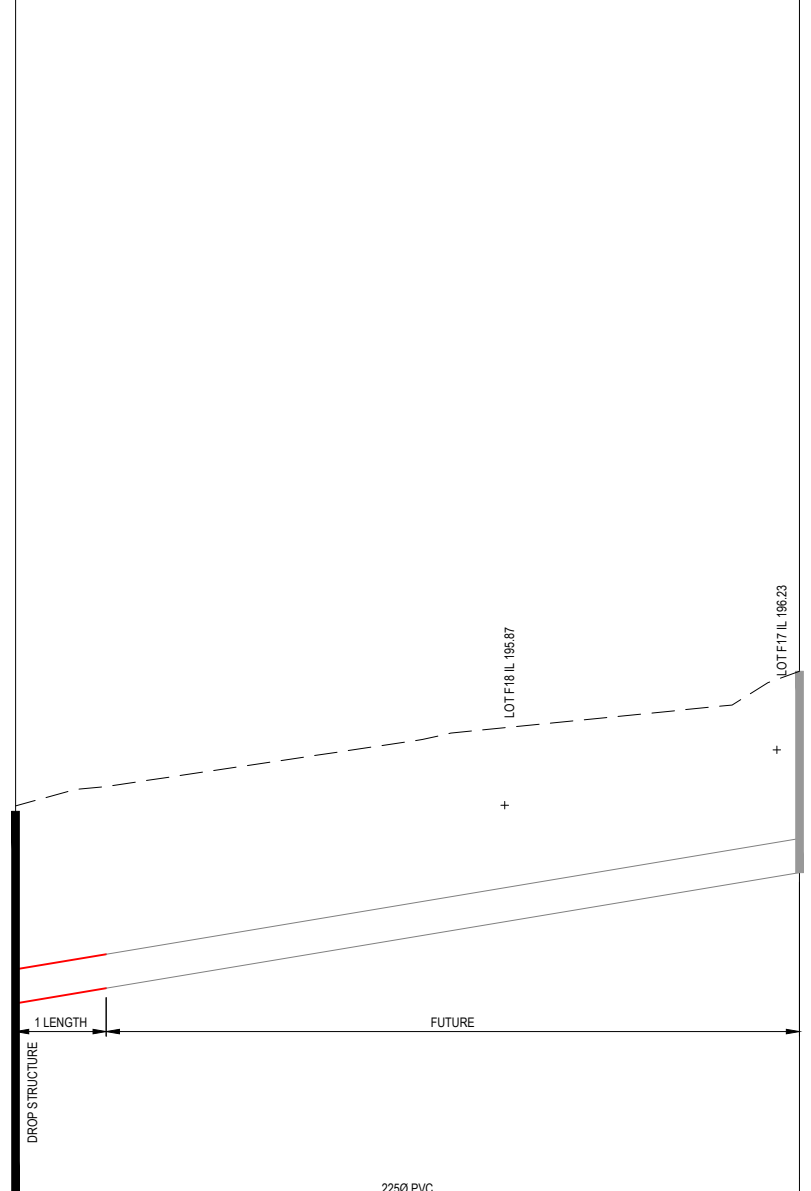
MH33A

MH34A MH30J

MH35A



DATUM RL	196.5	
DEPTH TO INVERT	1.06	1.16
INVERT LEVEL	198.06	202.82
DESIGN SURFACE	199.12	203.98
CHAINAGE	0.00	75.25



RL	193	
DEPTH TO INVERT	1.27	1.33
INVERT LEVEL	194.61	195.47
DESIGN SURFACE	195.88	196.80
CHAINAGE	0.00	51.86

CONCEPT PLAN

© COPYRIGHT. THE INFORMATION CONTAINED ON THIS DRAWING IS THE INTELLECTUAL PROPERTY OF TOMKINSON GROUP. COPYING OR USING THIS DRAWING IN WHOLE OR IN PART WITHOUT THE EXPRESS WRITTEN PERMISSION OF TOMKINSON GROUP INFRINGES COPYRIGHT

REV	DESCRIPTION	DES	DWG	CHK	DATE
A	AS SUBMITTED TO CLIENT & AQUATEC	NJB	NJB	RK	15/01/16

Tomkinson Group
 PROJECT MANAGERS DEVELOPMENT PLANNERS ISO 9001:2008
 LICENSED SURVEYORS CIVIL ENGINEERS FS520488
 FREECALL: 1800 810 170 TEL: (03) 5445 8700 FAX: (03) 5441 3648
 PO BOX 421, BENDIGO 3552 57 MYERS STREET, BENDIGO 3550
 WEB: www.tomkinson.com EMAIL: bendigo@tomkinson.com

Principal STRATHFIELDSAYE HOLDINGS PTY LTD



"IMAGINE" ESTATE - STAGE 6
 JUMBUCK LANE - STRATHFIELDSAYE
 RETICULATION SEWER LONG SECTIONS (SHEET 6 OF 6)

Water Authority & Ref:
 COLIBAN
 WATER
 ME - TBA
 SHT 8 of 8 REV A
 Drawing No.
 1065306S08

NOTE: THIS PLAN IS AN UNCONTROLLED DOCUMENT AND WILL NOT BE UPDATED. IT IS THE RESPONSIBILITY OF THE USER TO CONFIRM THAT THIS IS A CURRENT COPY AND SUITABLE FOR THE PROPOSED USE. THIS SHEET MUST BE READ IN CONJUNCTION WITH ALL SHEETS OF THIS SET AND ANY ACCOMPANYING DOCUMENTS. PLO DATE: 15/01/2016 FILE: F:\JOB DATA\1065306S08\STRATHFIELDSAYE\BENENGINEERING\CIVIL\CURRENT DESIGN\1065306 ENG PLANS.DWG