

"IMAGINE" ESTATE - STAGE 5

WATER PLANS

STRATHFIELDSAYE EAST PRECINCT

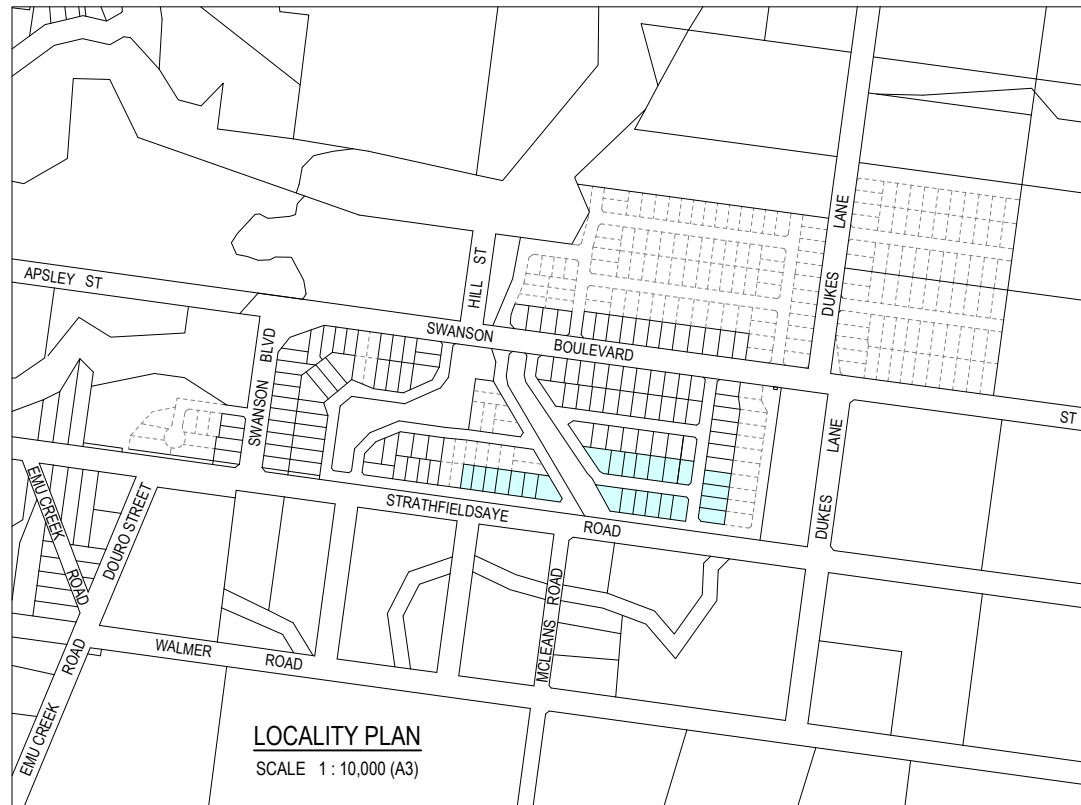


TABLE OF OFFSETS FOR SERVICES

STREET	GAS		WATER		ELECTRICITY		COMMS	
	OFFSET	SIDE	OFFSET	SIDE	U/G CABLE OFFSET*	SIDE	OFFSET	SIDE
COOMOORA CIRCUIT (ADJACENT TO RESERVE)	1.9m	WEST	2.3m	WEST	1.0m	EAST	0.5m	EAST
COOMOORA CIRCUIT (EAST-WEST)	2.9m	NORTH	3.4m	NORTH	2.3m	NORTH	1.9m	NORTH
McENIRY WAY	1.9m	SOUTH	2.3m	SOUTH	2.4m	NORTH	1.9m	NORTH
YIRRILIL WAY (ADJACENT TO RESERVE)	1.9m	EAST	2.3m	EAST	1.0m	WEST	0.5m	WEST
YIRRILIL WAY (EAST-WEST)	1.9m	SOUTH	2.3m	SOUTH	2.4m	NORTH	1.9m	NORTH
WALLAROO AVE (NORTH-SOUTH)	1.9m	EAST	2.3m	EAST	2.4m	WEST	1.9m	WEST
WALLAROO AVE (ADJ STRATHFIELDSAYE RD)	4.2m	NORTH	4.7m	NORTH	3.4m	NORTH	2.9m	NORTH

* ELECTRICITY OFFSET NOMINATED IS TO THE CABLE CLOSEST TO THE BUILDING LINE

NOTES

- WATER MAINS WILL BE INSTALLED IN ACCORDANCE WITH THE WATER SUPPLY CODE OF AUSTRALIA (WSA 03-2002-2.3, MELBOURNE RETAIL WATER AGENCIES EDITION, VERSION 1.0), INCLUDING THE SUPPLEMENT REGARDING UNDER PRESSURE CUT-IN CONNECTION TO PRESSURE PIPES >= DN80 AND ASSOCIATED COLIBAN WATER ADDENDUM
- COVER BELOW KERB & CHANNEL INVERT OR FINISHED SURFACE RESIDENTIAL ZONE

MINIMUM COVER FOR NOM PIPE DIAMETER			
LOCATION	<100	150	225 300
WITHIN NATURESTRIP	600mm	600mm	750mm 750mm
MINOR ROADS	900mm	900mm	900mm 900mm
- WHERE WORKS ARE IN THE VICINITY OF EXISTING SERVICES, THESE SERVICES ARE TO BE LOCATED AND PROVEN AND THE VARIOUS SERVICE AUTHORITIES NOTIFIED 48 HOURS (MIN) PRIOR TO THE COMMENCEMENT OF WORKS. A SUPERVISOR FROM THESE AUTHORITIES MUST BE ON SITE DURING LOCATION AND PROVING AND DURING THE WATER MAIN WORKS.
- TOTAL WORKS

SIZE	TYPE	CLASS	LENGTH
100	PVC	12	377m
100	DICL	K9	100m
300	PVC	12	331m
300	DICL	K9	60m
- COLIBAN WATER MUST BE NOTIFIED 5 WORKING DAYS (MIN) PRIOR TO CONSTRUCTION COMMENCING.
- THRUST RESTRAINTS SHALL BE PROVIDED TO WSA STANDARD DRAWING WAT 1205 TO WAT 1207 AS NECESSARY.
- THRUST RESTRAINTS HAVE BEEN DESIGNED FOR GROUND CONDITIONS CLASSIFICATION OF MEDIUM. THE CONTRACTOR SHALL CONFIRM THE ACTUAL GROUND CONDITIONS WITH THE SUPERINTENDENT PRIOR TO CONSTRUCTING RESTRAINTS. ALL THRUST RESTRAINTS ARE TO BE RED GUM OR CONCRETE WITH AN ASSUMED MAINS PRESSURE OF 120m MIN
- DICL CLASS K9 CAN BE USED IN LIEU OF PVC CLASS 18
- WATER AND GAS MAINS TO BE COMMON TRENCHED.
- FIRE PLUG POSTS ARE TO BE SUPPLIED AND INSTALLED AS PER WSA STANDARD DRAWING WAT 1300 TYPE "B"
- WATER SERVICE TAPPINGS ON CORNER ALLOTMENTS MUST BE TO THE FRONTAGE OF THE LOT.
- MAXIMUM COVER TO TOP OF PIPE MUST NOT EXCEED 1.50m FROM KERB AND CHANNEL INVERT / FINISHED SURFACE.
- ALL MAINS TO BE LAID OVER DRAINS UNLESS NOTED OTHERWISE.
- THE CONTRACTOR SHALL EXERCISE EXTREME CARE DURING WATER MAIN CONSTRUCTION TO ENSURE THAT UNDER NO CIRCUMSTANCES SHALL THE EXISTING TREES BE DAMAGED.
- ALL BENDS AND FITTINGS IN PVC WATER MAIN SHALL BE DUCTILE IRON CEMENT LINED.
- VALVES TERMINATING 63 PE MAINS ARE TO BE SCOUR VALVE WASHOUT ASSEMBLY. ALL OTHER VALVES ARE STOP VALVES UNLESS OTHERWISE SPECIFIED
- THE CONTRACTOR MUST CONTACT DIAL BEFORE YOU DIG (CALL 1100), OR VISIT THE DIAL BEFORE YOU DIG WEBSITE PRIOR TO COMMENCING WORKS AND SATISFY THEMSELVES THAT THERE ARE NO SERVICES WITHIN THE VICINITY OF THE WORK AREA
- NO WORK IS TO COMMENCE BEFORE THE CONTRACTOR HAS ASCERTAINED WHAT UNDERGROUND SERVICES ARE PRESENT
- CONTRACTOR MUST FOLLOW THE "NO GO ZONE" SAFETY PROCEDURES AT ALL TIMES, WHICH ARE AVAILABLE FROM ALL UTILITY AND TELECOMMUNICATIONS COMPANIES, INCLUDING THE OFFICE OF THE CHIEF ELECTRICAL INSPECTOR, THE OFFICE OF GAS SAFETY AND WORKSAFE VICTORIA
- IF THESE SAFETY PROCEDURES CANNOT BE COMPLIED WITH THEN NO WORK IS TO BE UNDERTAKEN WITHOUT PERMISSION FROM THE UTILITY COMPANY
- THE PROJECT AREA CONTAINS THE FOLLOWING SERVICES FOR ASSISTANCE IN EMERGENCY CONTACT.

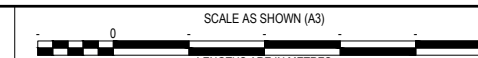
SERVICES	AUTHORITY & CONTACT	TELEPHONE
DRAINAGE	CITY OF GREATER BENDIGO	5434 6000
ELECTRICITY	POWERCOR	132 412
GAS	SP AUSNET	136 707
COMMUNICATIONS	TELSTRA	132 203
SEWER & WATER	COLIBAN WATER	1300 363 200

APPROVED FOR CONSTRUCTION

REV	DESCRIPTION	DES	DWG	CHK	DATE
H	AMENDMENT TO 1000 LINE OFFTAKE AT COOMOORA CIRCUIT	MS	MS	NJB	03/09/15
G	CHANGE PE PN16 PIPES TO DICL K9 AFTER CONSULTATION WITH COLIBAN WATER	NJB	NJB	NJB	08/07/15
F	CORRECT PE PIPE DIAMETERS TO BE OD	NJB	NJB	NJB	03/06/15
E	CHANGE PVC CL18 TO PE PN 16 - CORRECT PIPE CLASS/TYPE ACROSS McENIRY WAY	NJB	NJB	NJB	22/05/15
D	CORRECT PIPE QUANTITIES	NJB	NJB	NJB	10/04/15
C	MINOR AMENDS AT CLIENT REQUEST	NJB	NJB	NJB	07/04/15
A	AS SUBMITTED TO COUNCIL	NJB	NJB	RK	03/06/14
REV	REVISION	DES	DWG	CHK	DATE

tomkinson Group
 PROJECT MANAGERS DEVELOPMENT PLANNERS
 LICENSED SURVEYORS CIVIL ENGINEERS
 FREECALL: 1800 810 170 TEL: (03) 5445 8700 FAX: (03) 5441 3648
 PO BOX 421, BENDIGO 3552 57 MYERS STREET, BENDIGO 3550
 WEB: www.tomkinson.com EMAIL: bendigo@tomkinson.com

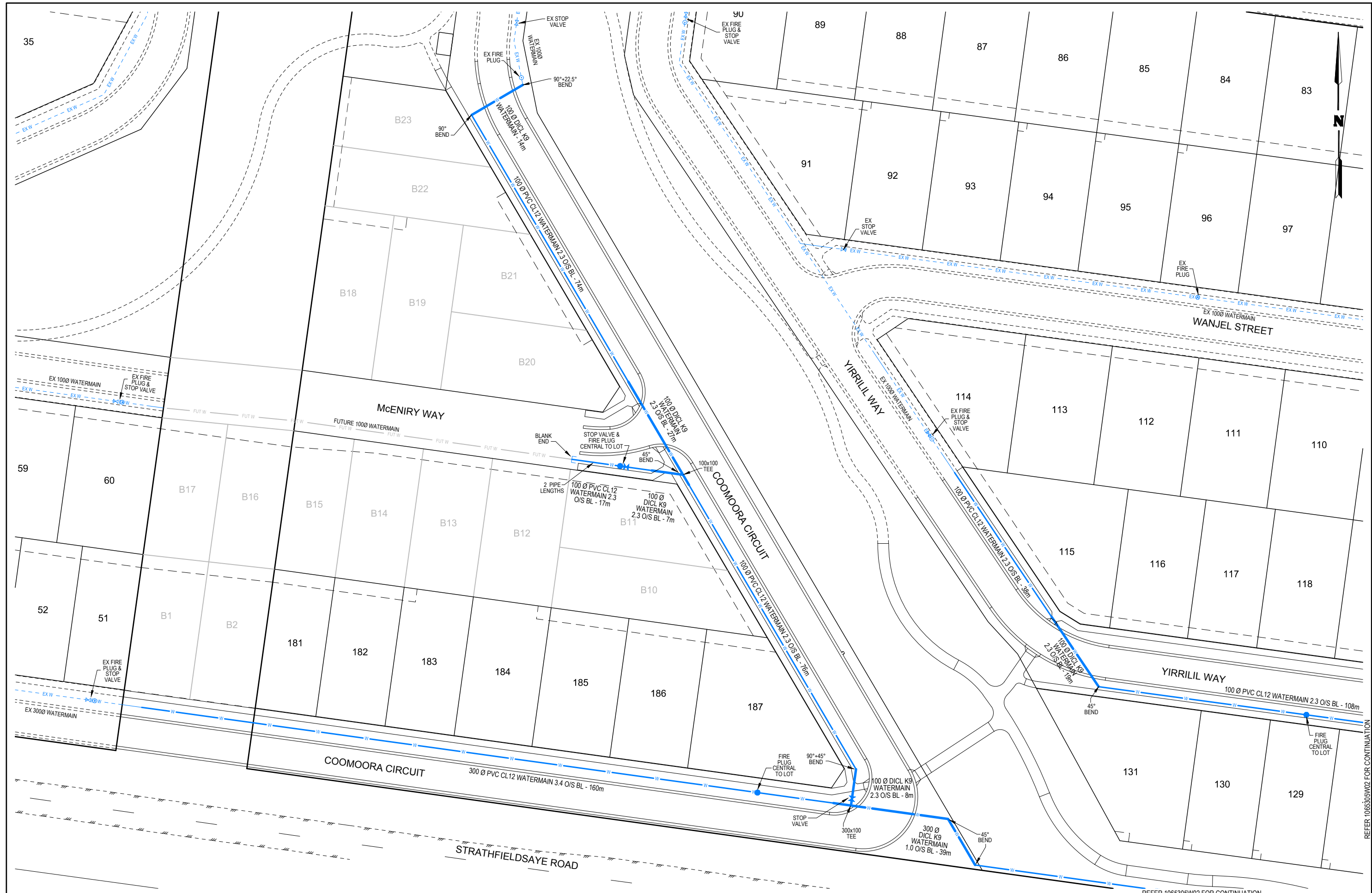
Principal STRATHFIELDSAYE HOLDINGS PTY LTD



"IMAGINE ESTATE" - STAGE 5
 STRATHFIELDSAYE EAST PRECINCT
 LOCALITY PLAN & GENERAL NOTES

Municipality & Ref:
 COLIBAN WATER
 WME 15650
 SHT 1 of 3 REV H
 Drawing No.
 1065305W01

NOTE: THIS PLAN IS AN UNCONTROLLED DOCUMENT AND WILL NOT BE UPDATED. IT IS THE RESPONSIBILITY OF THE USER TO CONFIRM THAT THIS IS A CURRENT COPY AND SUITABLE FOR THE PROPOSED USE. THIS SHEET MUST BE READ IN CONJUNCTION WITH ALL SHEETS OF THIS SET AND ANY ACCOMPANYING DOCUMENTS. PLOT DATE: 03/09/2015 FILE: P:\JOB DATA\1065305\1065305 STRATHFIELDSAYE HOLDINGS - STRATHFIELDSAYE EAST PRECINCT - ENGINEERING CONSTRUCTION PLANS.DWG



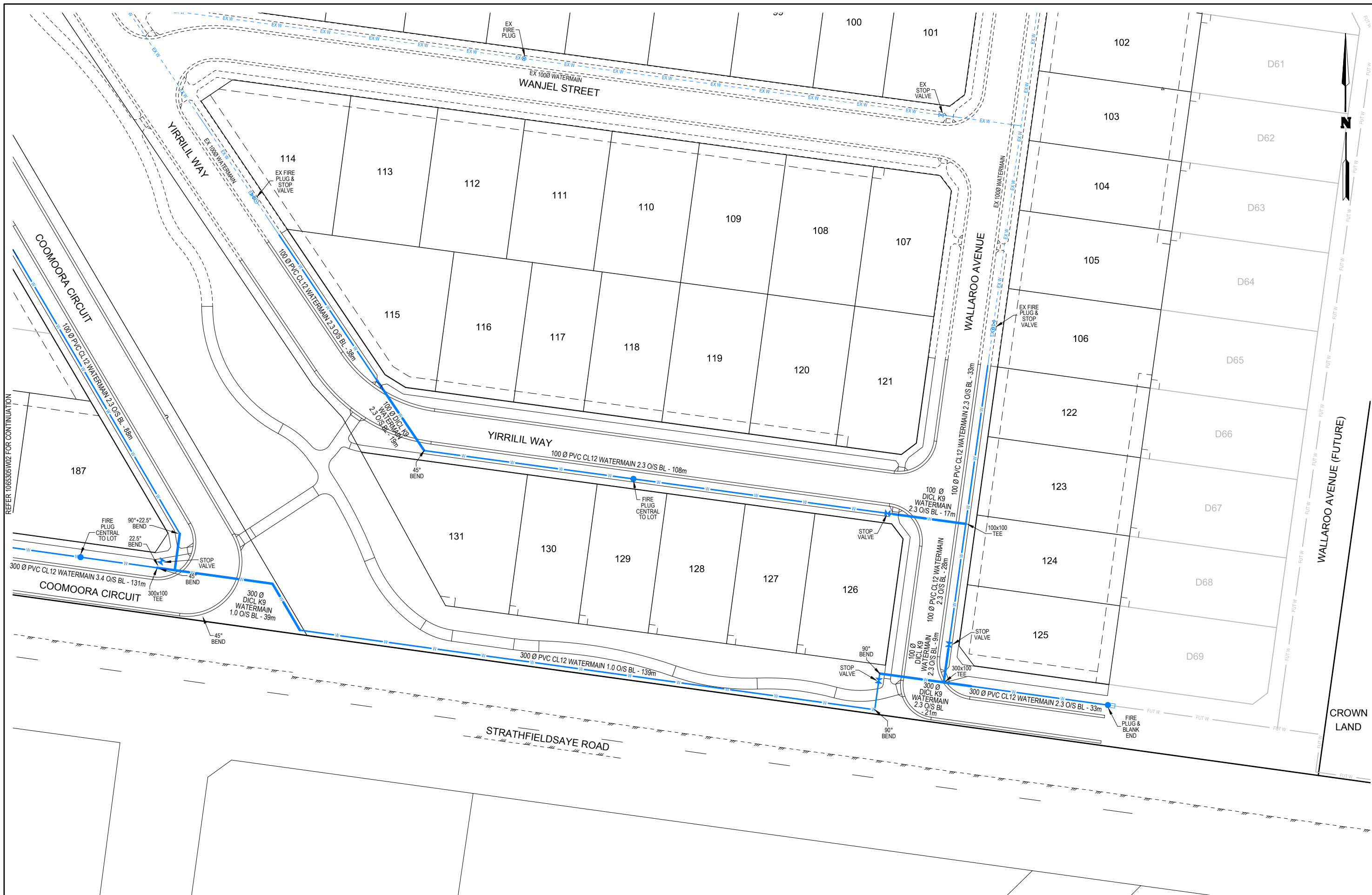
REV	DESCRIPTION	DES	DWG	CHK	DATE
H	AMENDMENT TO 1000 LINE OFFTAKE AT COOMOORA CIRCUIT	MS	MS	NJB	03/09/15
G	CHANGE PE PN16 PIPES TO DI19 K9 AFTER CONSULTATION WITH COLIBAN WATER	NJB	NJB	NJB	08/07/15
F	CORRECT PE PIPE DIAMETERS TO BE OD	NJB	NJB	NJB	03/06/15
E	CHANGE PVC CL18 TO PE PN 16 - CORRECT PIPE CLASS/TYPE ACROSS MCENIRY WAY	NJB	NJB	NJB	22/05/15
D	CORRECT PIPE QUANTITIES	NJB	NJB	NJB	10/04/15
C	MINOR AMENDS AT CLIENT REQUEST	NJB	NJB	NJB	07/04/15
A	AS SUBMITTED TO COUNCIL	NJB	NJB	RK	03/06/14

tomkinson Group
 PROJECT MANAGERS DEVELOPMENT PLANNERS
 LICENSED SURVEYORS CIVIL ENGINEERS
 FREECALL: 1800 810 170 TEL: (03) 5445 8700 FAX: (03) 5441 3648
 PO BOX 421, BENDIGO 3552 57 MYERS STREET, BENDIGO 3550
 WEB: www.tomkinson.com EMAIL: bendigo@tomkinson.com

ISO 9001:2008
FS520488

Principal	STRATHFIELDSAYE HOLDINGS PTY LTD	SCALE 1:800 (A3)	Municipality & Ref: COLIBAN WATER WME 15650
"IMAGINE ESTATE" - STAGE 5 STRATHFIELDSAYE EAST PRECINCT WATER DETAIL PLAN (SHEET 1 OF 2)			SHT 2 of 3 REV H
			Drawing No. 1065305W02

REFERENCE TO 1065305W02 FOR CONTINUATION
 THIS SHEET MUST BE READ IN CONJUNCTION WITH ALL SHEETS OF THIS SET AND ANY ACCOMPANYING DOCUMENTS
 NOTE: THIS PLAN IS AN UNCONTROLLED DOCUMENT AND WILL NOT BE UPDATED. IT IS THE RESPONSIBILITY OF THE USER TO CONFIRM THAT THIS IS A CURRENT COPY AND SUITABLE FOR THE PROPOSED USE. THIS SHEET IS THE PROPERTY OF STRATHFIELDSAYE HOLDINGS. STRATHFIELDSAYE HOLDINGS - STRATHFIELDSAYE HOLDINGS - STRATHFIELDSAYE HOLDINGS - STRATHFIELDSAYE HOLDINGS - STRATHFIELDSAYE HOLDINGS
 PLO DATE: 03/09/2015 FILE: P:\JOB DATA\10660710663 - STRATHFIELDSAYE HOLDINGS - STRATHFIELDSAYE HOLDINGS - STRATHFIELDSAYE HOLDINGS - STRATHFIELDSAYE HOLDINGS - STRATHFIELDSAYE HOLDINGS.DWG

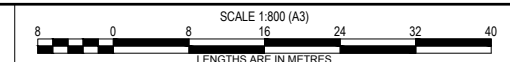


APPROVED FOR CONSTRUCTION

REV	DESCRIPTION	DES	DWG	CHK	DATE
H	AMENDMENT TO 100Ø LINE OFFTAKE AT COOMOORA CIRCUIT	MS	MS	NJB	03/09/15
G	CHANGE PE PN16 PIPES TO DICL K9 AFTER CONSULTATION WITH COLIBAN WATER	NJB	NJB	NJB	08/07/15
F	CORRECT PE PIPE DIAMETERS TO BE OD	NJB	NJB	NJB	03/06/15
E	CHANGE PVC CL18 TO PE PN 16 - CORRECT PIPE CLASS/TYPE ACROSS MCENIRY WAY	NJB	NJB	NJB	22/05/15
D	CORRECT PIPE QUANTITIES	NJB	NJB	NJB	10/04/15
C	MINOR AMENDS AT CLIENT REQUEST	NJB	NJB	NJB	07/04/15
A	AS SUBMITTED TO COUNCIL	NJB	NJB	RK	03/06/14

Tomkinson Group
 PROJECT MANAGERS DEVELOPMENT PLANNERS ISO 9001:2008
 LICENSED SURVEYORS CIVIL ENGINEERS FS520488
 FREECALL: 1800 810 170 TEL: (03) 5445 8700 FAX: (03) 5441 3648
 PO BOX 421, BENDIGO 3552 57 MYERS STREET, BENDIGO 3550
 WEB: www.tomkinson.com EMAIL: bendigo@tomkinson.com

Principal STRATHFIELDSAYE HOLDINGS
PTY LTD



"IMAGINE ESTATE" - STAGE 5
 STRATHFIELDSAYE EAST PRECINCT
 WATER DETAIL PLAN (SHEET 2 OF 2)

Municipality & Ref:
COLIBAN WATER
WME 15650
SHT 3 of 3 REV H
Drawing No.
1065305W03

NOTE: THIS PLAN IS AN UNCONTROLLED DOCUMENT AND WILL NOT BE UPDATED. IT IS THE RESPONSIBILITY OF THE USER TO CONFIRM THAT THIS IS A CURRENT COPY AND SUITABLE FOR THE PROPOSED USE. THIS SHEET MUST BE READ IN CONJUNCTION WITH ALL SHEETS OF THIS SET AND ANY ACCOMPANYING DOCUMENTS. PLOT DATE: 03/09/2015 FILE: P1009 DAT\1065305W03 STRATHFIELDSAYE HOLDINGS - STRATHFIELDSAYE ENGINEERING CIVIL ENGINEERING DESIGN\1065305 ENGINEERING CONSTRUCTION PLANS.DWG