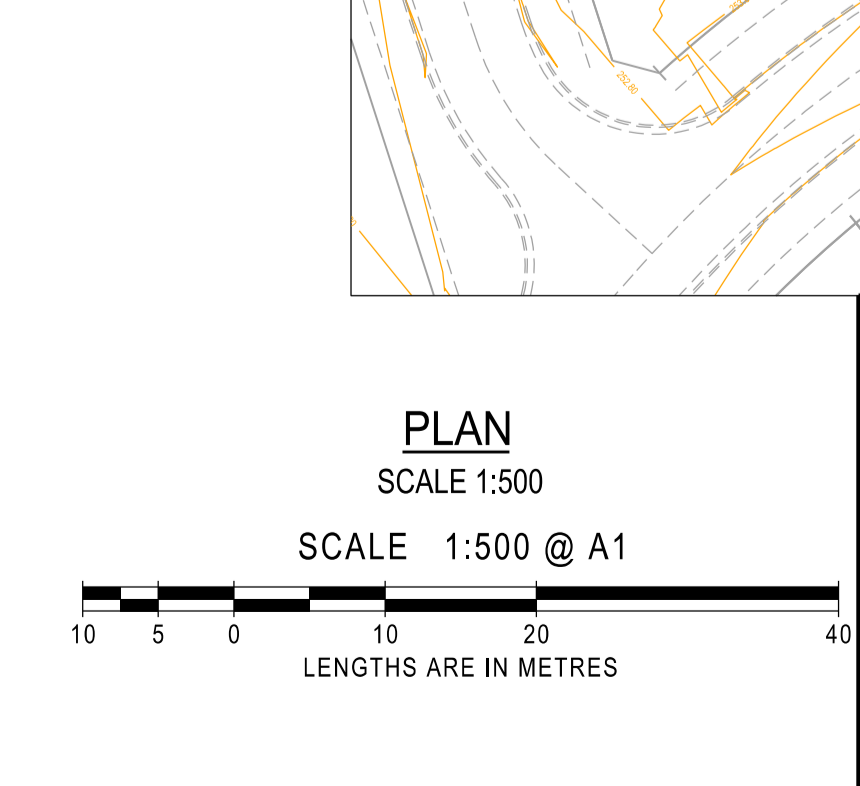


SYMBOL LEGEND

Prop	Prop Stage	Ex/Natural/FS Level	+28.57 -N527.57 -FS257.57
Drains	— S — S	FS @ Building Line	+28.57 -BL28.57
Sewer < 3000	— S — S	Top/Toe Batter Level	+TOP28.57 -TOE27.57
Sewer > 3000	— S — S	Top/Bottom RW Level	+TW28.57 -BW27.57
Water (DW)	— W — W	1% AEP Flood Level	+FL28.57
Water (NDW)	— W — W	Direction of Lot Fall	→
House Drain	— H — H	Fill Proposed (<0.3m/20.3m)	█
Property Inlet	— P — P	Cut Proposed	█
Street Sign	— S — S	Asphalt Surface Prop	█
PSM	— P — P	Concrete Surface Prop (Paths/Driveways/Slabs)	█
Rock Ret Wall	— R — R	Tree To Be Removed	(X)
Sleeper Ret Wall	— S — S	Tree To Be Retained with Tree Protection Zone (TPZ)	(D)
Conduits 50mm	— C — C		
Conduits 100mm	— C — C		
Street Tree without/with Passive Irrigation (Refer Detail)	— T — T		
Ex Drains	— E — E		
Ex Water/DW/NDW	— E — E		
Ex Sewer/Gas	— E — E		
Ex Elect/Comm	— E — E		



VICTORIAN PROFESSIONAL ENGINEERS
REGISTRATION ACT 2019
REGISTERED ENGINEER-ROHAN JARVIS
REGISTRATION NUMBER:PE0005212

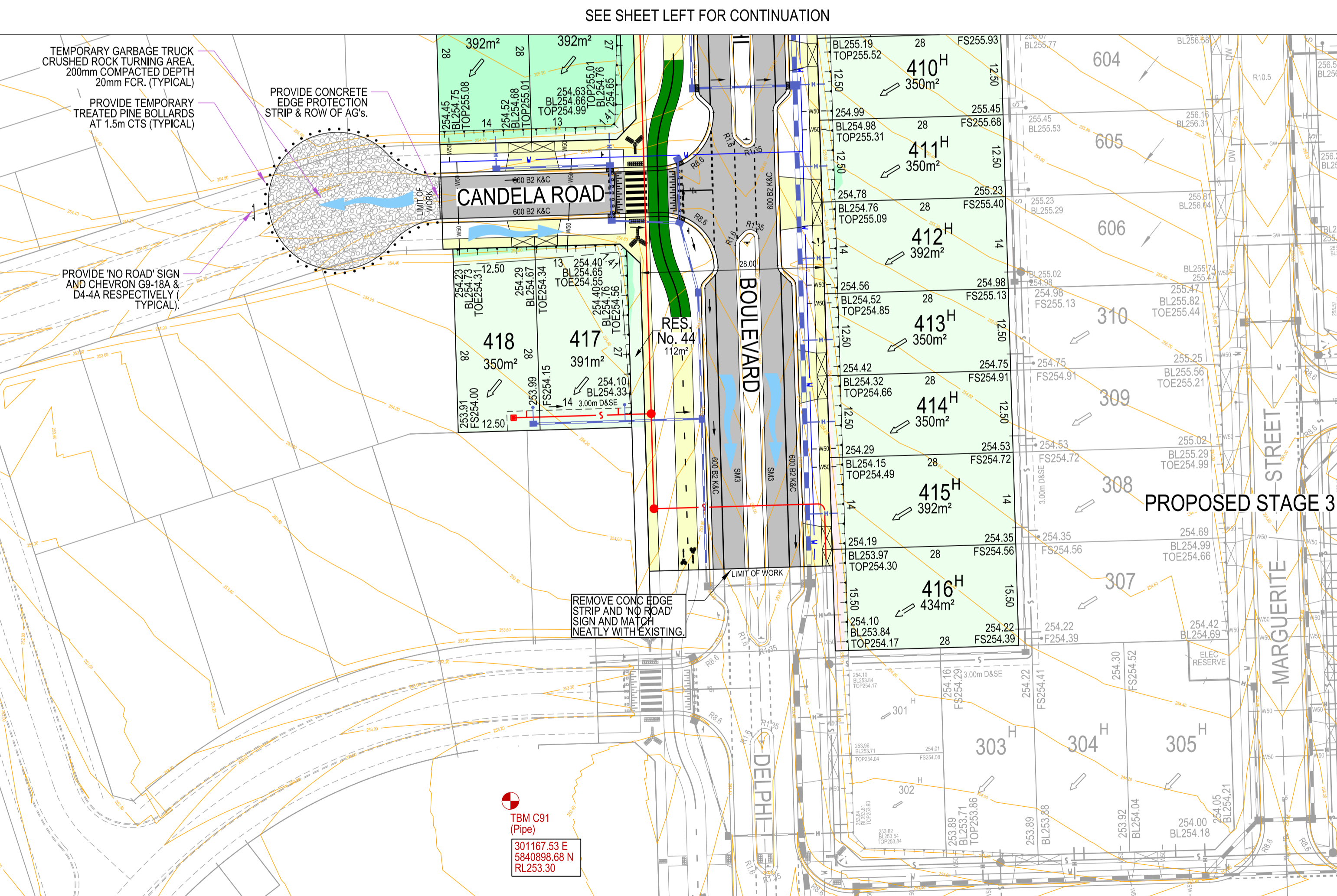
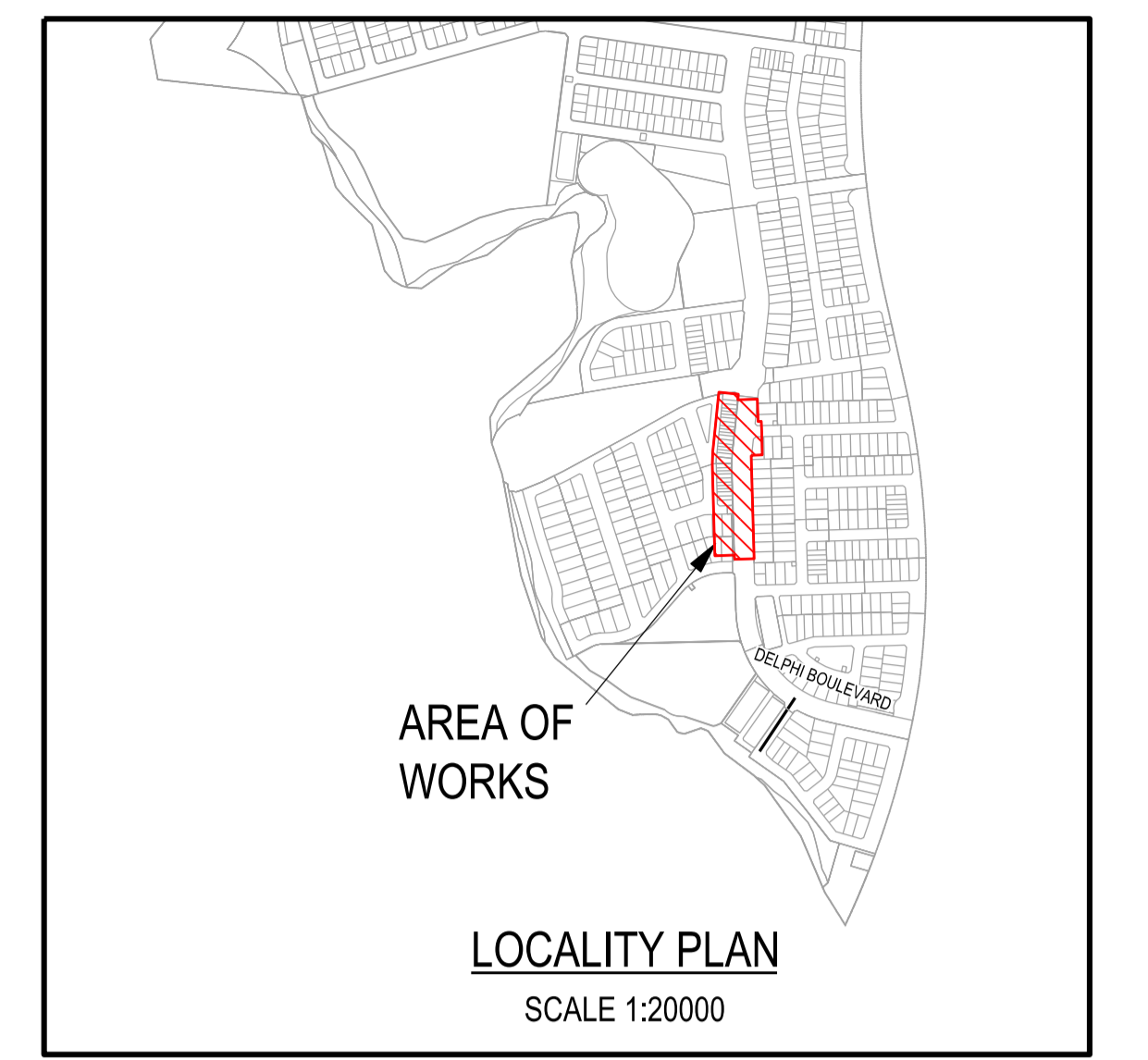
SHEET INDEX

SHT No.	VER	DESCRIPTION
1	P2	FUNCTIONAL LAYOUT PLAN, SERVICES OFFSET TABLE, LOCALITY PLAN & SHEET INDEX
2	P2	CAR PARKING PLAN & TYPICAL ROAD CROSS SECTIONS
3	P2	TURNING MOVEMENT DETAILS

SERVICES OFFSETS AND LOCATIONS

Location	Gas	Water		Communications		Electricity		BOK	Road Width	Joint Trenching	Street Classification
		NDW	DW	Cables	Pits	Cables	Poles				
DELPHI BOULEVARD	-	-	2.70 E	1.85 W	-	2.45 W	1.00 BOK	4.35/6.45 E 9.15/11.25 W	28.00	FTTH&E	CONNECTOR ROAD
ECRU LOOP	-	-	2.70 N	1.85 S	1.85 S	2.45 S	1.00 BOK	4.35 N 4.05 S	16.00	FTTH&E	LOCAL ACCESS LEVEL
SKYWAY DRIVE	-	-	2.70 S	0.50 N	1.85 S	1.00 N	1.00 BOK	1.90 N 5.00 S	14.50	FTTH&E	LOCAL ACCESS LEVEL 1
CRESSUDA STREET	-	-	2.70 N	1.85 S	1.85 N	2.45 S	1.00 BOK	4.35 N 4.05 S	16.00	FTTH&E	LOCAL ACCESS LEVEL 1
CANDELA ROAD	-	-	2.70 N	1.85 S	1.85 N	2.45 S	1.00 BOK	4.35 N 4.05 S	16.00	FTTH&E	LOCAL ACCESS LEVEL 1

NOTE: a) At the court bowl where water and gas mains pass, the watermain offset is to be increased by 0.5 metres.
b) * Indicates offsets from back of kerb where services do not run parallel to title boundary.
c) * Indicates Communication pits placed within concrete footpath.



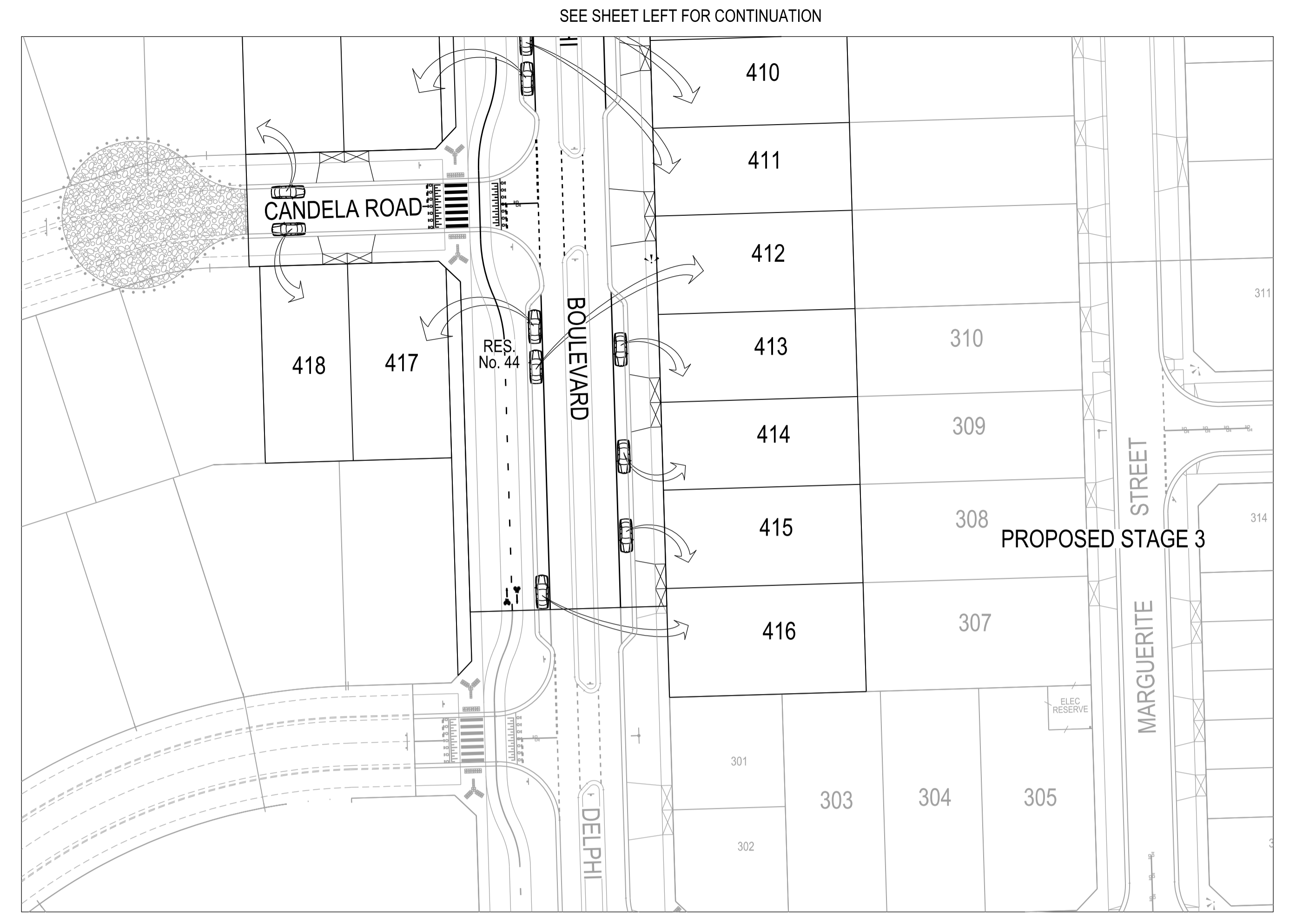
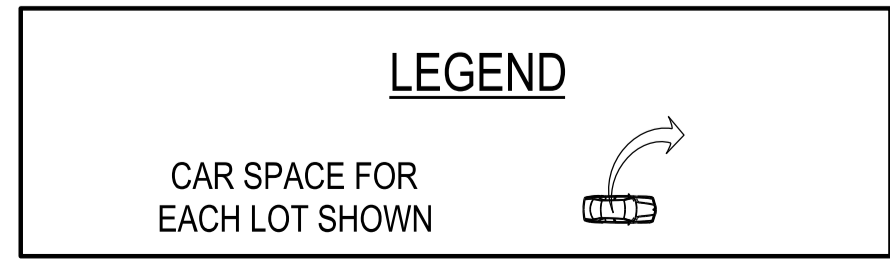
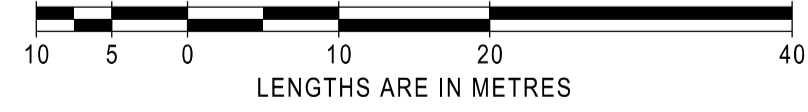
MELWAY REF.	362-H-10	 land surveyors civil engineers	1/19 cato street hawthorn east, 3123 telephone 8823 2300 fax no. 8823 2310	
SURVEY	BPD		MUNICIPALITY	HUME
DESIGN	RF		REFERENCE	10255 E/4
DRAWN	RF		FUNCTIONAL LAYOUT PLAN, SERVICES OFFSET TABLE, LOCALITY PLAN & SHEET INDEX	
AMENDMENTS		SCALE AS SHOWN	DATUM AHD	
VER	DATE	REMARKS	CHECKED RJ	
			DATE NOV '23	
			SHEET 1 OF 3 P2	



SEE SHEET RIGHT FOR CONTINUATION

PLAN
SCALE 1:500

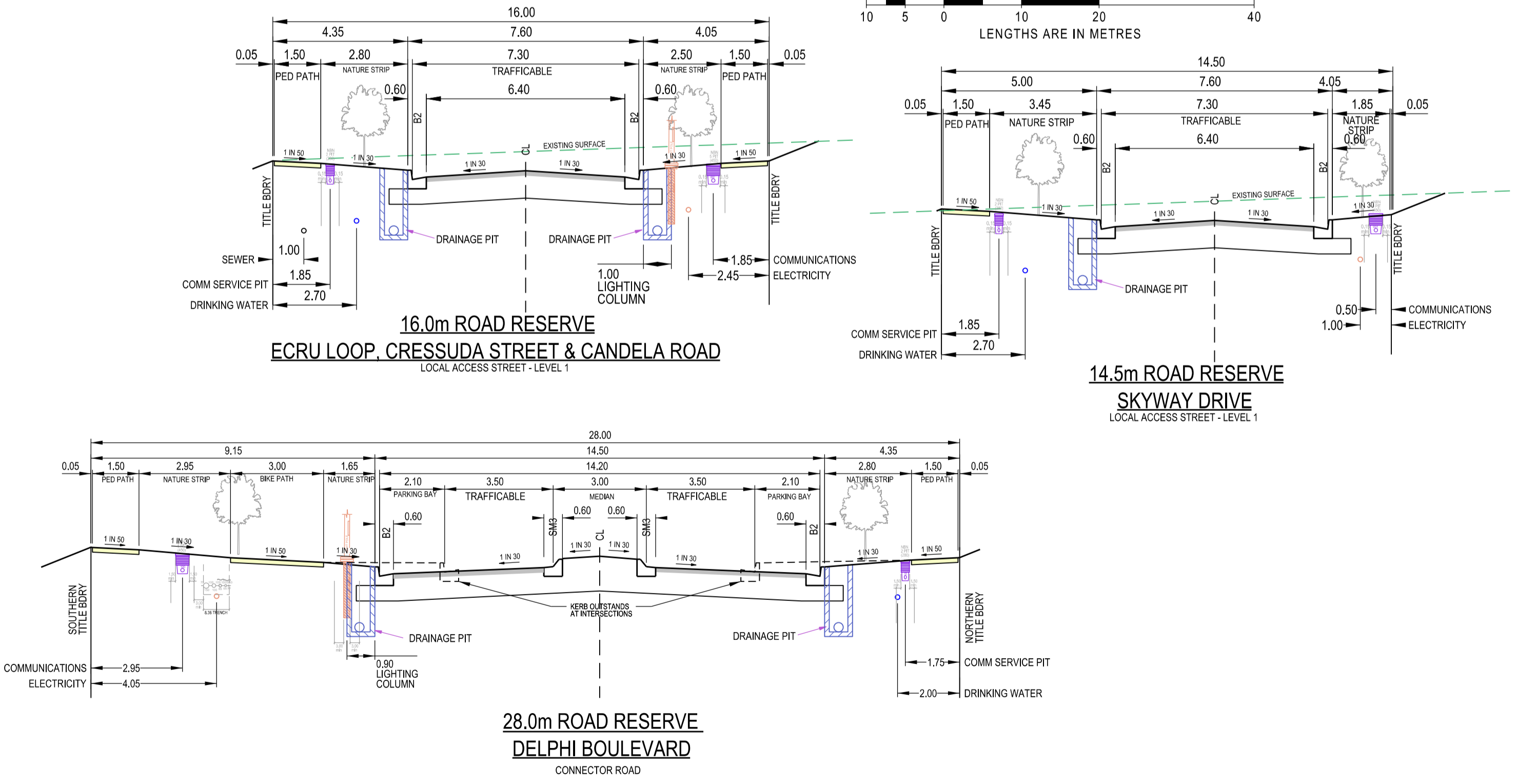
SCALE 1:500 @ A1



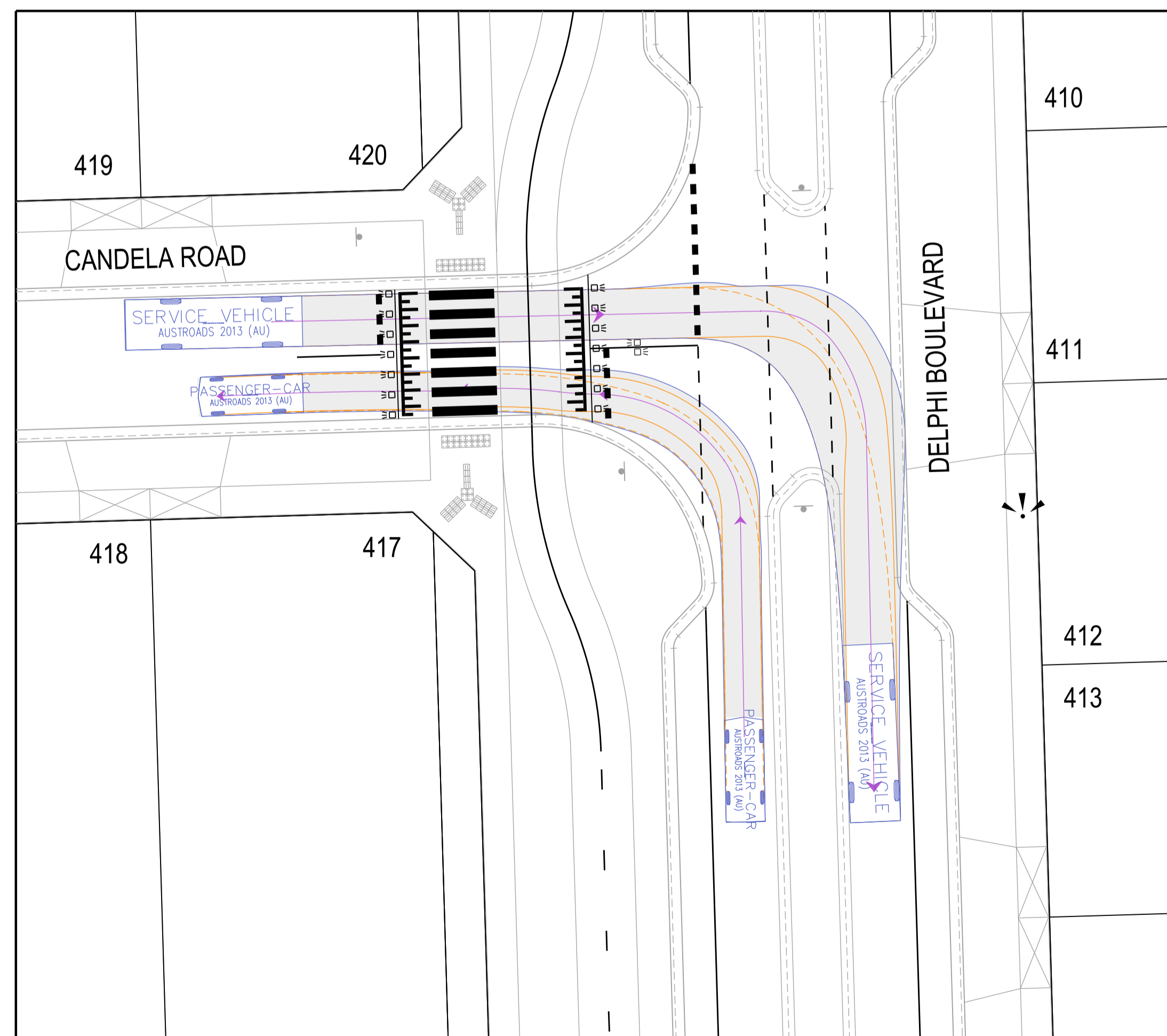
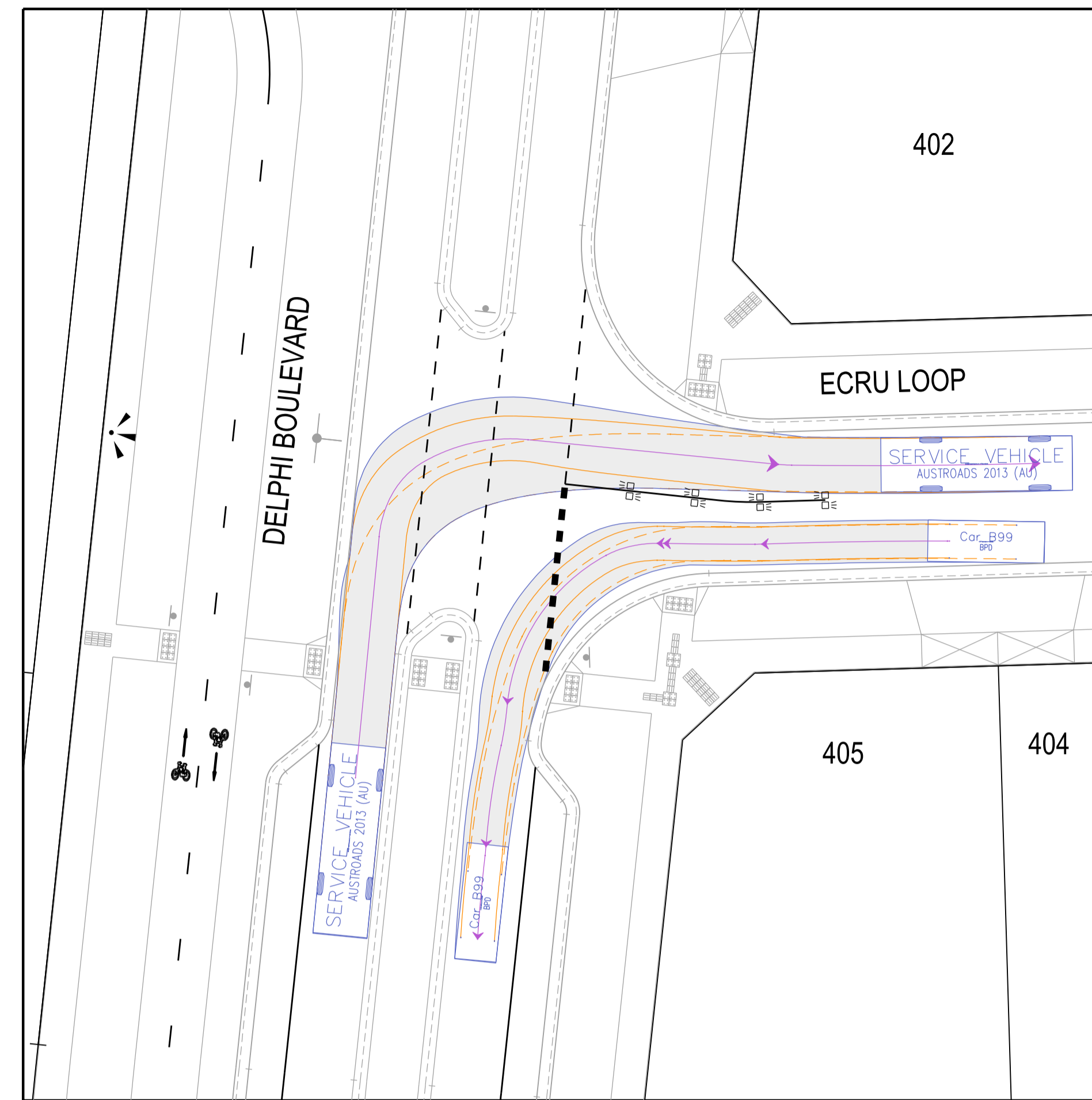
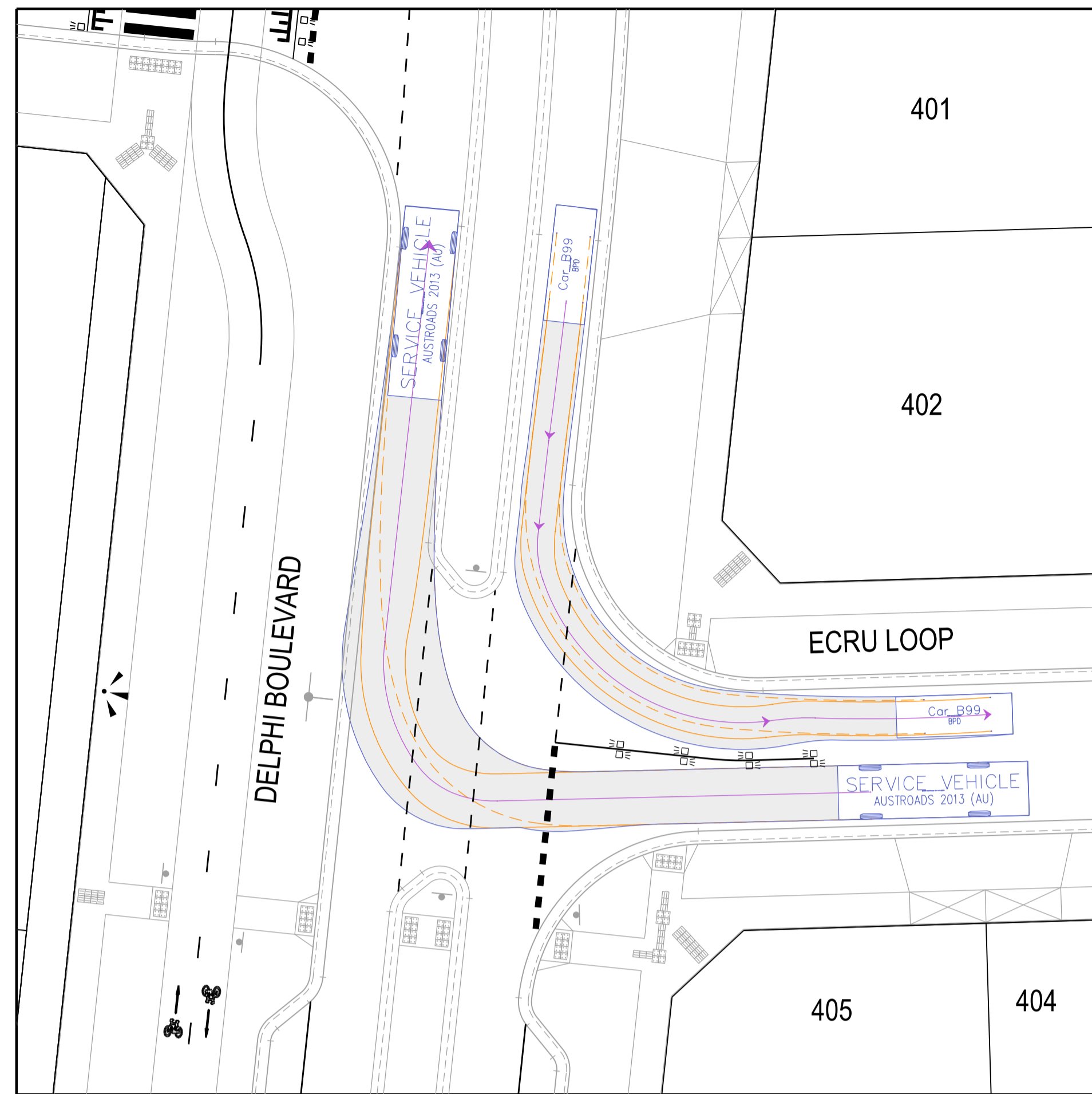
SEE SHEET LEFT FOR CONTINUATION

PLAN
SCALE 1:500

SCALE 1:500 @ A1



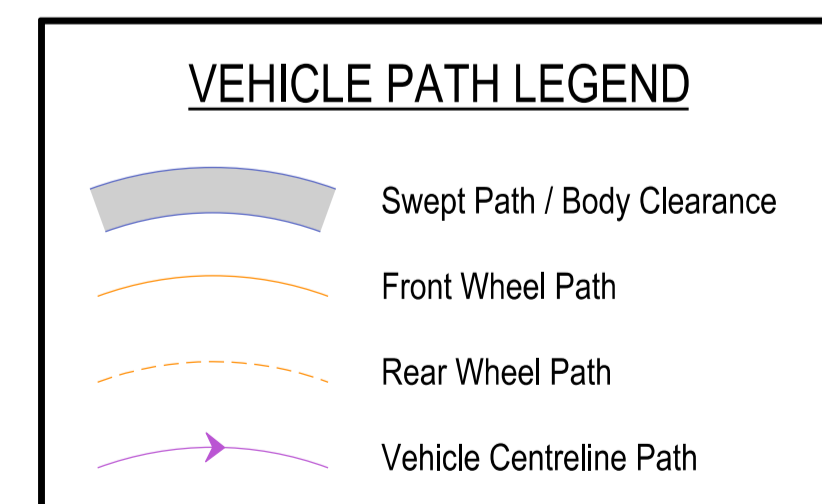
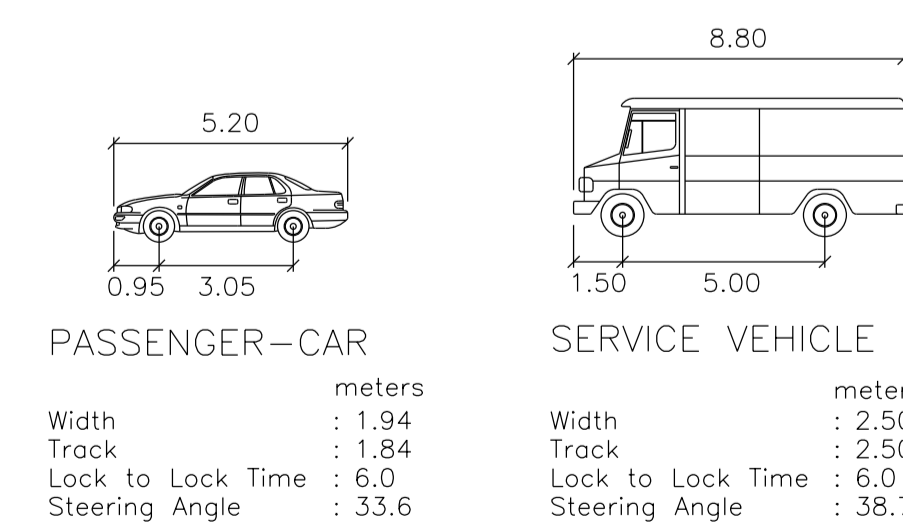
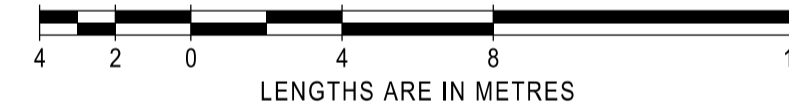
		 breese pitt dixon pty. ltd. land surveyors civil engineers		1/19 cato street hawthorn east, 3123 telephone 8823 2300 fax no. 8823 2310	
AMENDMENTS		MELWAY REF. 362-H-10	KIMBERLEY ESTATE STAGE 4		MUNICIPALITY HUME
		SURVEY BPD			REFERENCE 10255 E/4
		DESIGN RF	CAR PARKING PLAN & TYPICAL ROAD CROSS SECTIONS		10255 E/4
		DRAWN RF			SCALE AS SHOWN
VER	DATE	REMARKS	CHECKED RJ	SHEET 2 OF 3	



TURNING MOVEMENT DETAILS

SCALE 1:200

SCALE 1:200 @ A1



AMENDMENTS		 breese pitt dixon pty. ltd. land surveyors civil engineers		1/19 cato street hawthorn east, 3123 telephone 8823 2300 fax no. 8823 2310	
				MELWAY REF. 362-H-10	MUNICIPALITY HUME
				SURVEY BPD	REFERENCE 10255 E/4
				DESIGN RF	SHEET 3 OF 3
DATE	REMARKS	CHECKED RJ	SCALE AS SHOWN	DATUM AHD	DATE NOV '23
KIMBERLEY ESTATE STAGE 4 TURNING MOVEMENT DETAILS			MUNICIPALITY HUME REFERENCE 10255 E/4 SHEET 3 OF 3		