

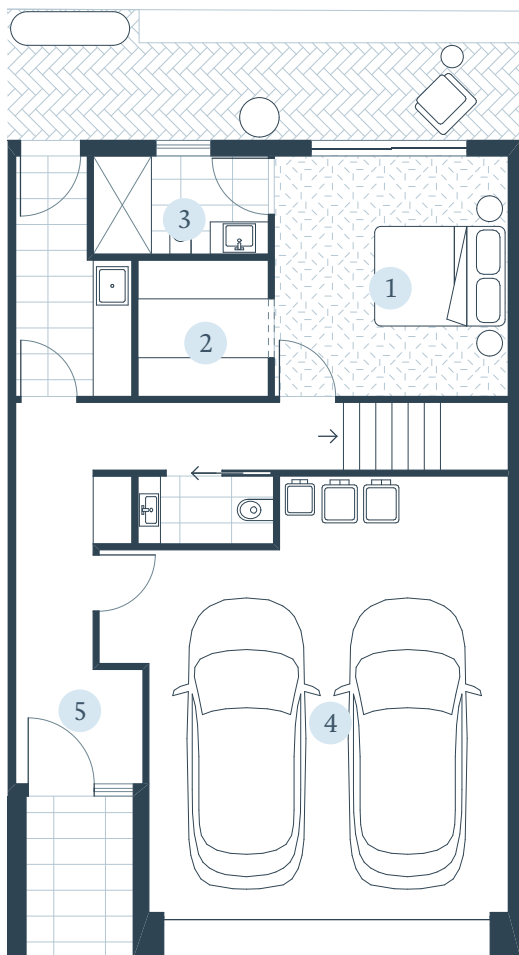
SEACLIFF

VILLAGE

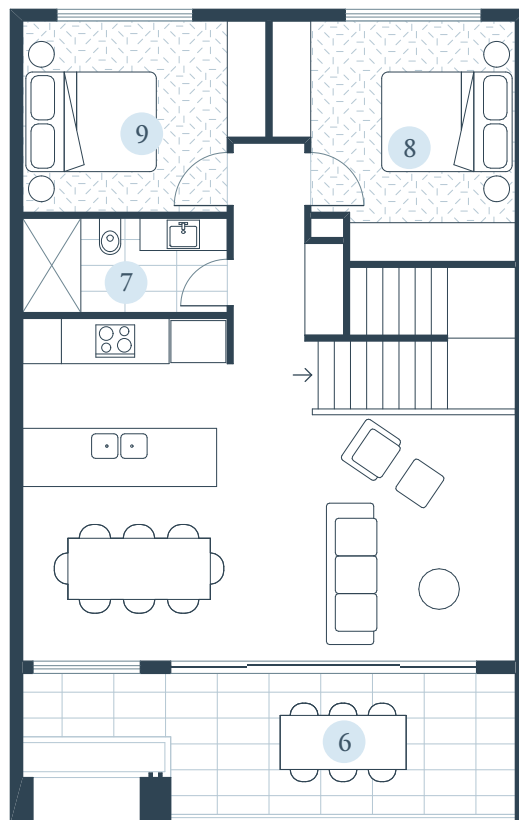
Marea Lot 93 & Lot 94



Artist Impression



Ground Floor



First Floor

Balcony	17m ²
Ground floor	97m ²
First floor	82m ²
Total	197m²

Key Features

- | | | |
|------------------|-----------|-------------|
| 1 Master bedroom | 4 Garage | 7 Bath |
| 2 Walk-in robe | 5 Entry | 8 Bedroom 2 |
| 3 Ensuite | 6 Balcony | 9 Bedroom 3 |

Display Suite
Clubhouse Road,
Seacliff Park SA 5049
Open 7 days 11 - 5pm

08 7201 3977
seacliffvillage.com.au



View the
Masterplan



Proudly marketed by

●LIVER ■UME

villawood
properties

The information contained in this document is given for general information purposes only. All plans, dimensions and particulars herein, whether by measurement or visual representation, are for general information only and do not constitute any representation by the vendor or by its agents or representatives. Changes will undoubtedly be made during development, and the dimensions, fittings, finishes and specifications are therefore subject to change. The furniture, goods and chattels depicted in this document are not included with any sale. No warranty is given, either expressly or implied and all interested parties should not rely on the information contained herein and should make their own enquiries before committing to any purchase. Internal areas are measured in accordance with the PCA (Property Council of Australia) Residential Standards. RLA 306035