

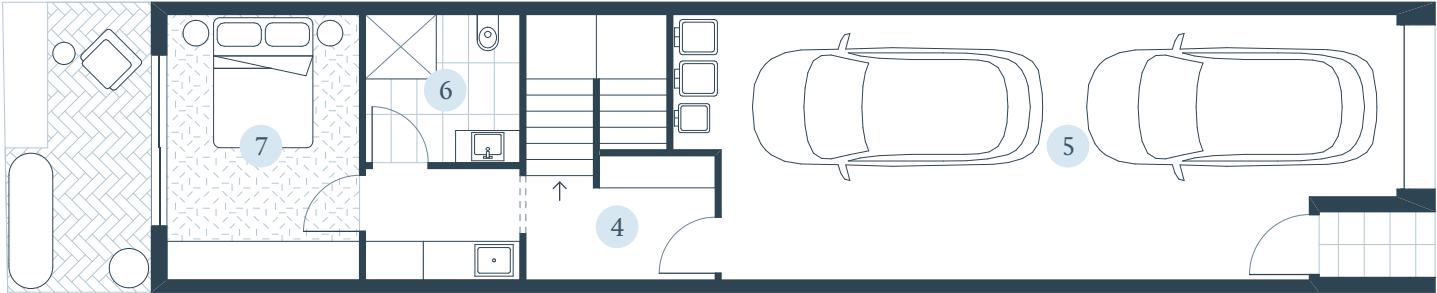
SEACLIFF

VILLAGE

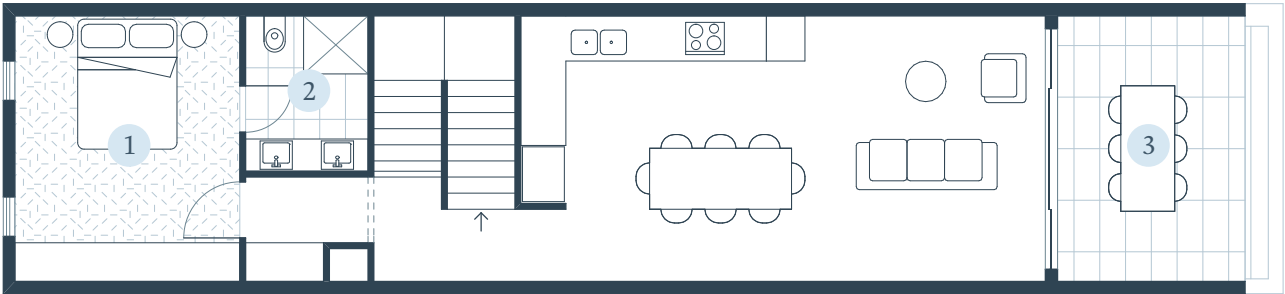
Lyra



Ground Floor



First Floor



Balcony	15m ²
Ground floor	88m ²
First floor	73m ²
Total	177m ²

Key Features

- 1

Master bedroom
- 4

Entry
- 6

Bathroom
- 2

Ensuite
- 5

Garage
- 7

Bedroom 2
- 3

Balcony

Display Suite
Clubhouse Road,
Seacliff Park SA 5049
Open 7 days 11 - 5pm

08 7201 3977
seacliffvillage.com.au



View the
Masterplan



Proudly marketed by
LIVER UME

villawood
properties