

SEACLIFF

VILLAGE



Arcadia

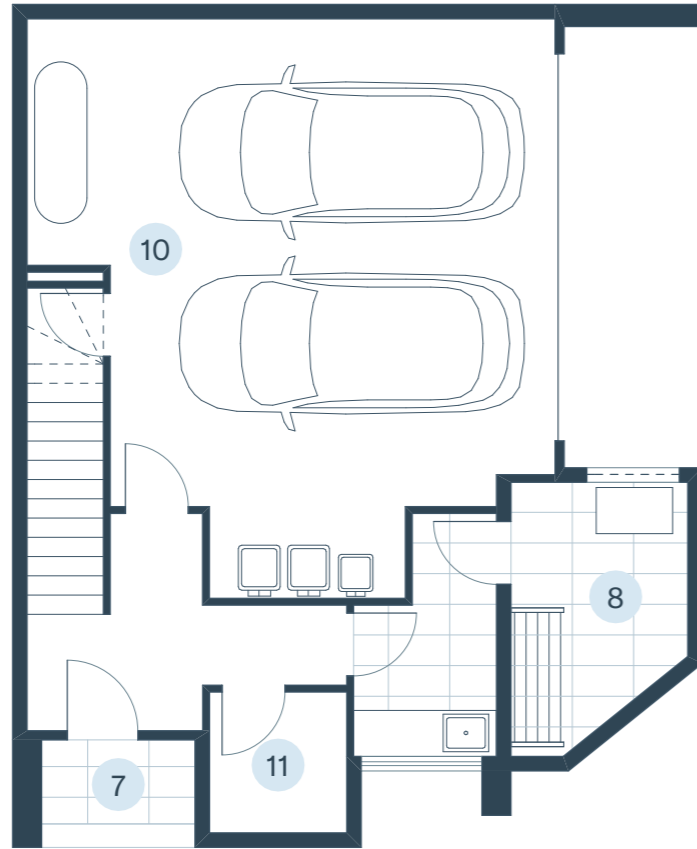
A home where nature meets sophistication, Arcadia is a sanctuary of light, space and effortless elegance.

Spanning three levels, it's designed for those who love to entertain while still enjoying their own private retreat. The middle level is the heart of the home, a seamless blend of indoor and outdoor living, where an open-plan kitchen, dining and living area flows effortlessly onto a spacious balcony overlooking the reserve.

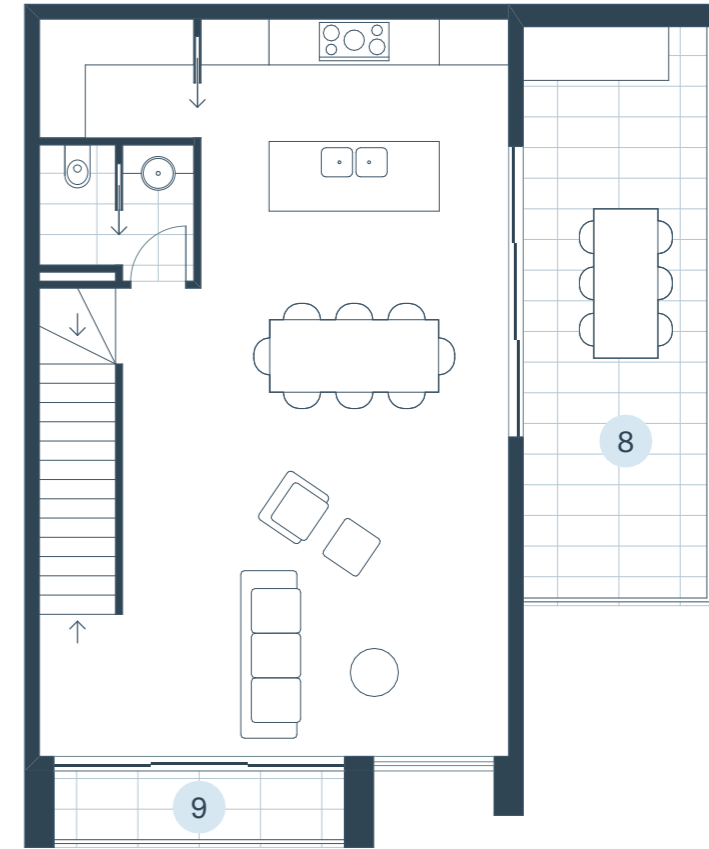
Upstairs, all three bedrooms offer a peaceful escape, with the master suite featuring its own ensuite for added comfort and privacy. Thoughtful design elements, including a walk-in pantry and multiple balconies to maximise the outlook make Arcadia a home that effortlessly balances beauty, functionality, and connection.



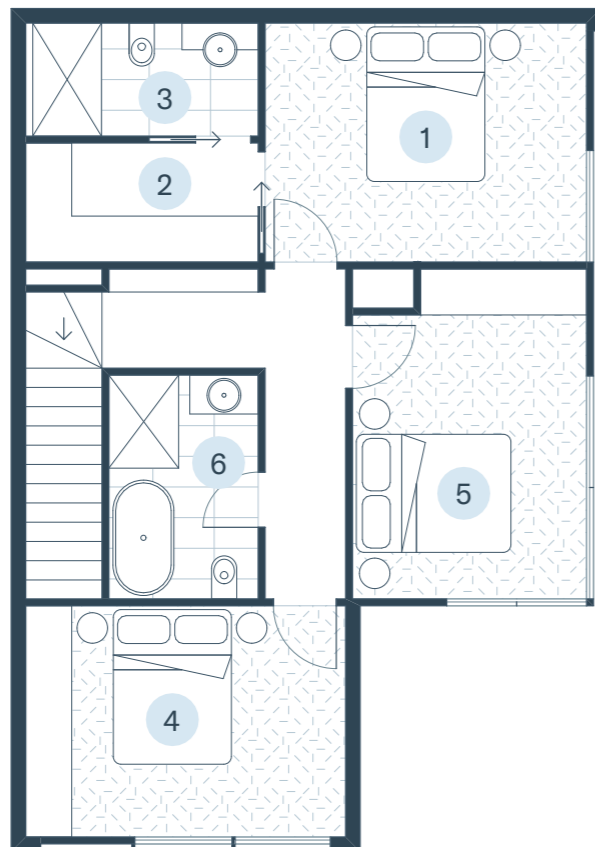
Ground Floor



First Floor



Second Floor

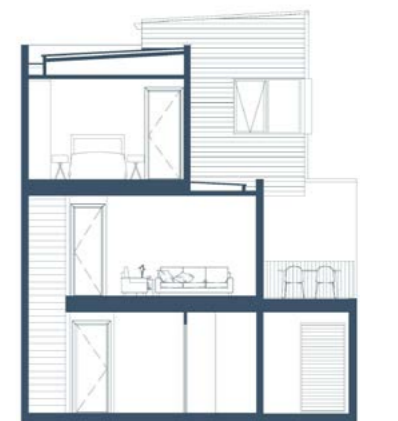


Key Features

- 1 Master Bedroom
- 2 Walk-in Robe
- 3 Ensuite
- 4 Bedroom 2
- 5 Bedroom 3
- 6 Bath
- 7 Entry
- 8 Terrace
- 9 Balcony
- 10 Garage
- 11 Storeroom

Balcony	21m ²
Ground Floor	83m ²
First Floor	68m ²
Second Floor	74m ²
Total	246m²

Metres





Artist Impression

Botanical Tour Scheme

Earthy, and inviting, Botanical Tour explores a reconnection with the natural environment.

Warmth is exaggerated, creating a tranquil, sophisticated escape – both grounded and balanced.



Artist Impression

Some of the features found in the Arcadia:

High ceilings

Quality floor coverings

Stone benchtops

European appliances

Butler's pantry

Private balconies

Efficient and sustainable design

Light, open and dramatic living spaces

Urban Break Scheme

Inspired by the cosmopolitan playground that is the urban environment, Urban Break acts as the elegant backdrop behind everyday life.

Neutrality is combined with high contrast elements to form an experience that is moody yet refined.



Artist Impression

Seaside Stay Scheme

A relaxed palette where warm timbers meet fresh, cool tones inspired by the classic Seaside Stay.

Bright and Crisp, Seaside Stay is an uncomplicated, contemporary translation of sun, sand, sky, and sea.

A masterpiece of design.

Every element of this unique and boutique address is the product of careful and thoughtful design. The bespoke homes are no exception.

Designed by Studio Nine Architects, each of these homes take advantage of its elevated aspect. Materials reflect the coastal location, and northern light floods spaces in winter.

Studio Nine Architects is an Adelaide based architecture and interior design studio. From humble beginnings in 1998, they are now one of the state's largest studios consisting of a team of over 50 design and support staff with a diverse portfolio of projects.



Display Suite
Open 7 days 11 - 5pm
Clubhouse Road,
Seacliff Park SA 5049

08 7201 3977
seacliffvillage.com.au



Proudly marketed by
LIVER HUME

villawood
properties