



Concept Master Plan



Housing

- 800 homes
- Diverse housing options
- 25% affordable housing

Community

- Villawood Club with pool, café, sports courts, function space, play spaces and gym
- Extensive open space, parks and reserves, including chain of ponds corridors
- Retention of a future rail corridor, which will be landscaped for community use in the interim
- Links with Aldinga Payinthe College, Cardijn College and Aldinga Sports Park

Environment

- Net zero community
- Embedded electrical network - all electric development
- Energy efficient homes including light coloured roofing, solar, heat pumps, batteries and microgrid
- 25% tree canopy



Housing Style



ReGen Living Premium 55+ Residential Community

Contributing to a diverse multi-generational community ReGen Living provides contemporary homes for active and independent people over 55.

A luxury clubhouse will be at the centre of the community, featuring a pool, spa, sauna, gymnasium, cinema, bar, and co-working space.

A selection of one, two and three bedroom low maintenance homes all feature private open space, car accommodation and beautifully appointed interior.

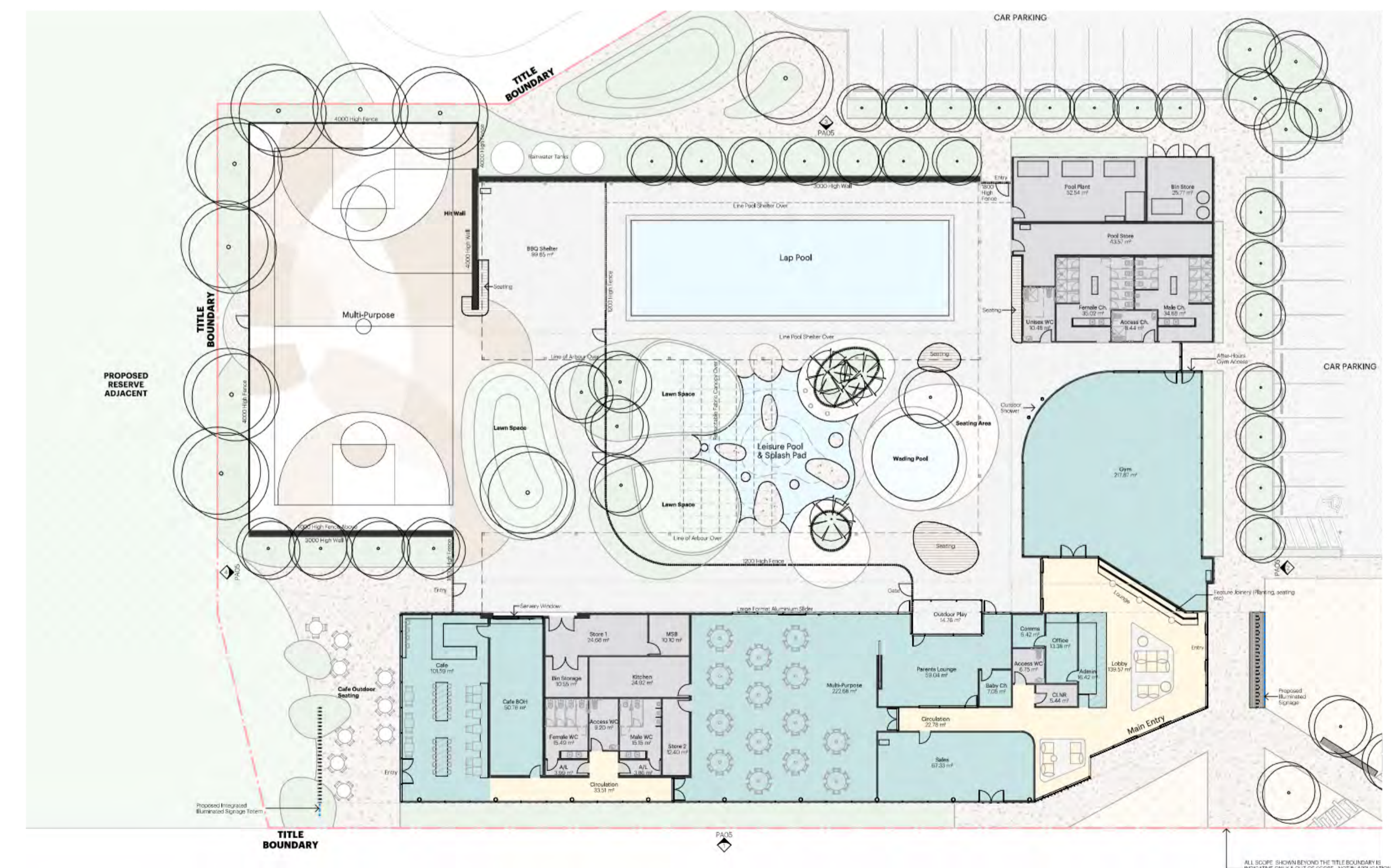


We are proud to have pioneered a state-of-the-art Resident's Club model which is delivered early in the life of our developments. Each Club we design and construct becomes the heart and soul of its community, with residents ultimately taking ownership of the Club.

Club Aldinga will be a facility that forms the centre piece of the community park "The Meeting Place" and will become the focus of community engagement and connectivity, not only within the project but as a conduit for the wider community to come together.

The Club will be an architecturally designed, net zero building and feature a fully equipped gym, café, function facility, lap and leisure pool, hard court and outdoor play spaces.

The facility will be fully resourced and will provide ongoing community development programs. We will work with Council and the surrounding community, including local businesses to ensure the facility meets current and future needs and provides opportunity to enhance and supplement existing facilities.

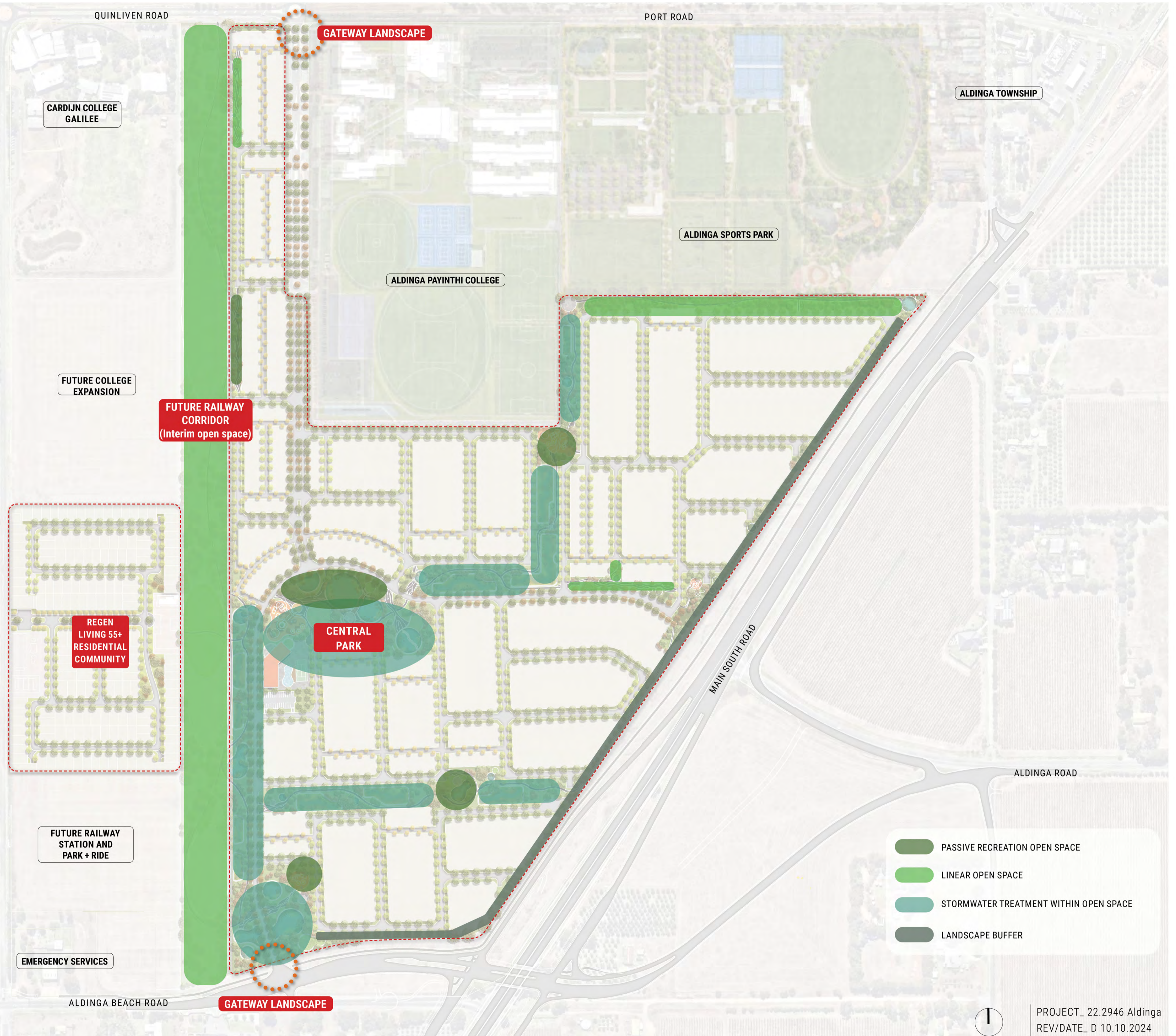


Willam Lakes example concept



RESERVE

RESERVE

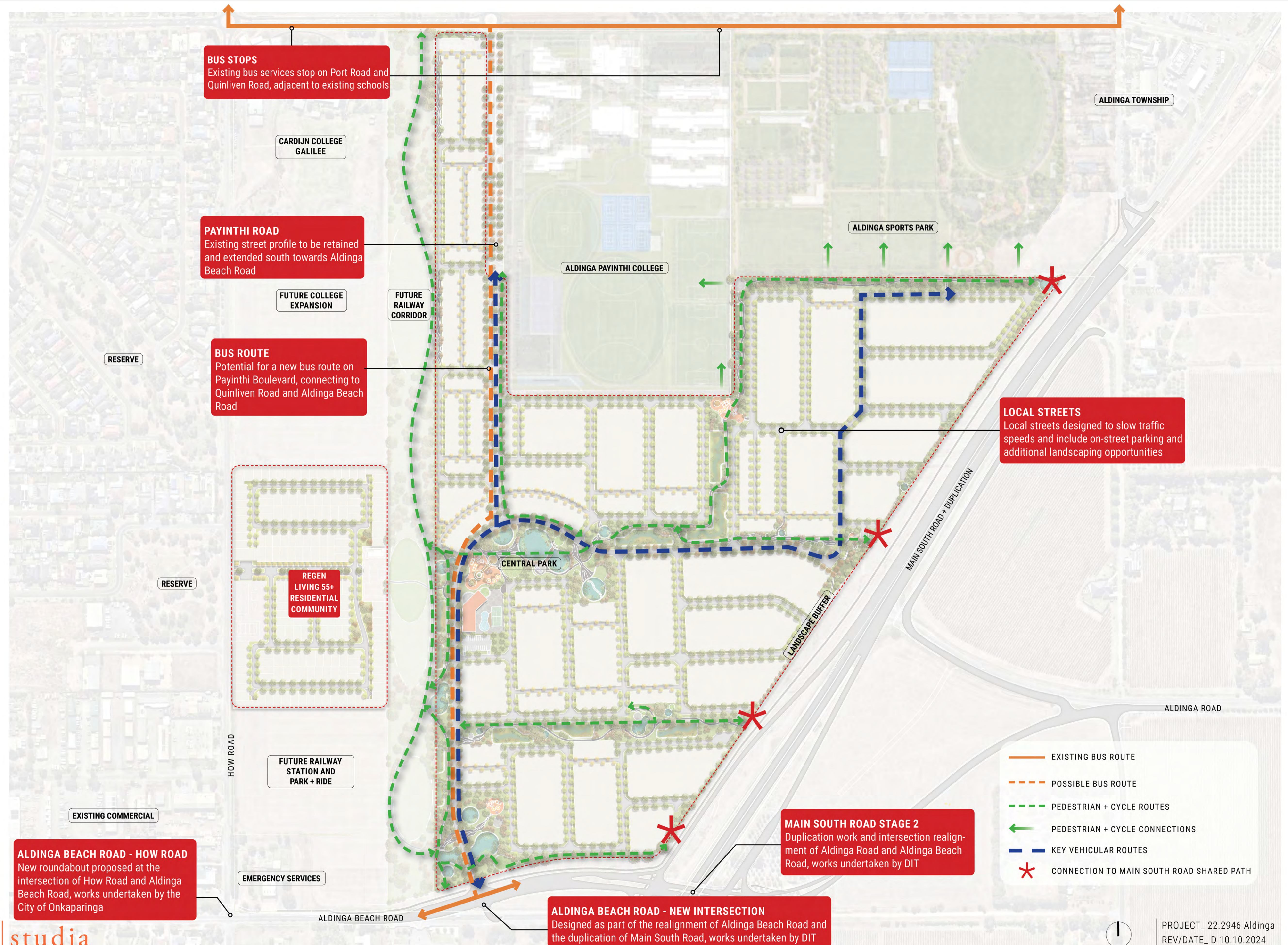


- PASSIVE RECREATION OPEN SPACE
- LINEAR OPEN SPACE
- STORMWATER TREATMENT WITHIN OPEN SPACE
- LANDSCAPE BUFFER



PROJECT_ 22.2946 Aldinga
REV/DATE_ D 10.10.2024

Movement Networks



TREES



Tristaniopsis
Mature size: H: 7-12m x W: 3-5m
Evergreen



Hymenosporum Flavum 'Native Frangipani'
Mature size: H: 6-8m x W: 5-6m
Evergreen



Lagerstroemia indica x fauriei 'Tonto'
Mature size: H: 3m x W: 4m
Deciduous



Lagerstroemia indica x fauriei 'Natchez'
Mature size: H: 5-6m x W: 4m
Deciduous



Eucalyptus leucoxylon megalocarpa
Mature size: H: 8m x W: 5m
Evergreen



Eucalyptus sideroxylon rosea
Mature size: H: 15m x W: 6-10m v
Evergreen



Corymbia citriodora 'Scentuous'
Mature size: H: 7m x W: 3m
Evergreen



Ulmus parvifolia
Mature size: H: 13m x W: 10m
Deciduous



Brachychiton populneus x acerifolius 'Bella Pink'
Mature size: H: 8m x W: 4m
Evergreen

SHRUBS + GROUNDCOVERS



Westringia species



Chrysocephalum apiculatum



Goodenia amplexans Claspig Goodenia



Grevillea obtusifolia



Scaevola albida



Hardenbergia species



Leucadendron species



Correa species



Grevillea cherry clusters



Banksia species



Brachyscome species

BASIN/WSUD + SEDGES



Carex appressa



Crowea exalata 'Edna Walling'



Dianella revoluta 'Little Rev'



Carex appressa



Juncus species



Schoenoplectus validus

Program

